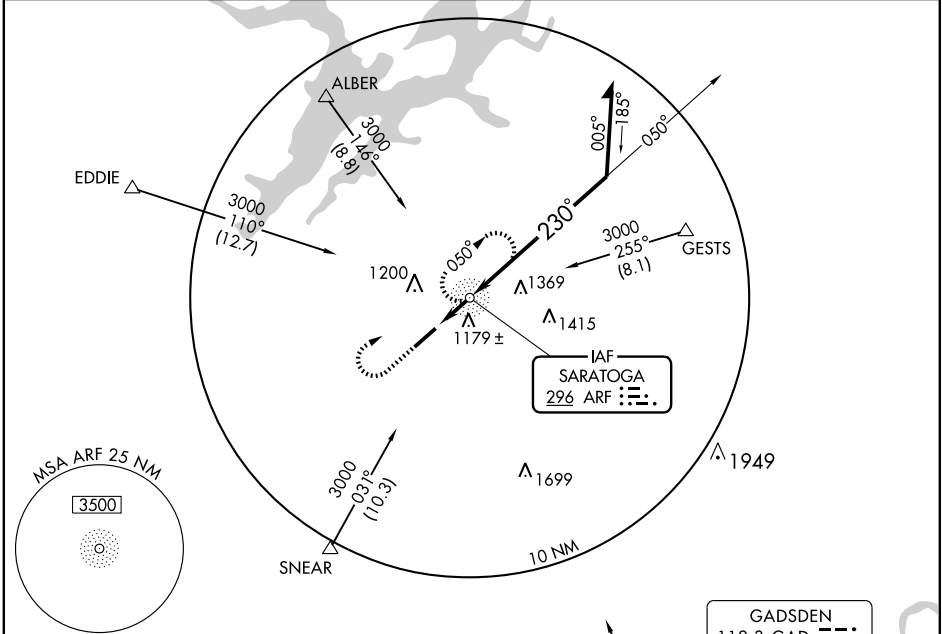


NDB ARF 296	APP CRS 230°	Rwy Idg TDZE Apt Elev	N/A N/A 1032
-----------------------	------------------------	-----------------------------	---

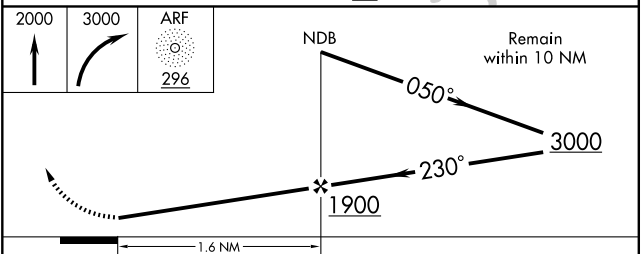
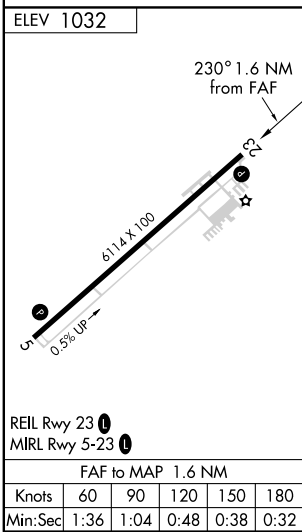
NA When local altimeter setting not received, use Huntsville Intl altimeter setting. MISSED APPROACH: Climb to 2000 then climbing right turn to 3000 direct ARF NDB and hold.

AWOS-3 119.575	BIRMINGHAM APP CON 132.15 285.45	UNICOM 123.0 (CTAF) (l)
--------------------------	--	--



SE-4, 31 MAY 2012 to 28 JUN 2012

SE-4, 31 MAY 2012 to 28 JUN 2012



CATEGORY	A	B	C	D
CIRCLING	1480-1 448 (500-1)	1500-1 468 (500-1)	1500-1½ 468 (500-1½)	1600-2 568 (600-2)
HUNTSVILLE INTL ALTIMETER SETTING MINIMUMS				
CIRCLING	1620-1 588 (600-1)	1640-1 608 (700-1)	1640-1¾ 608 (700-1¾)	1640-2 608 (700-2)

ALBERTVILLE, ALABAMA

AL-5925 (FAA)

WAAS CH 96604 W23A	APP CRS 230°	Rwy ldg TDZE 1032 Apf Elev 1032	6114 1032 1032
--	------------------------	---	---

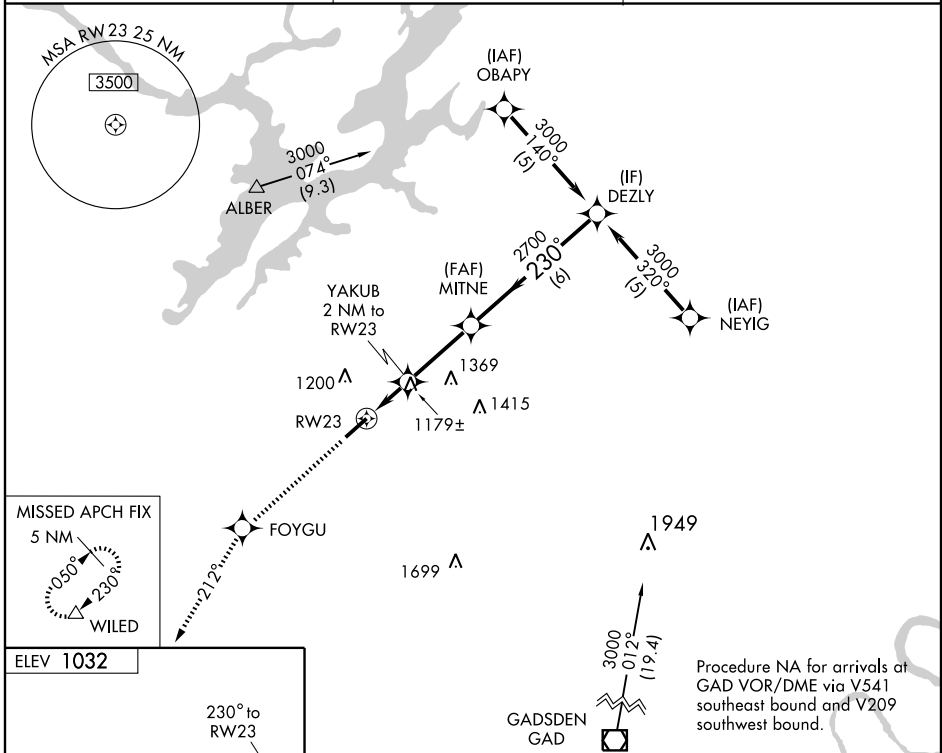
RNAV (GPS) RWY 23

ALBERTVILLE/ALBERTVILLE RGNL-THOMAS J BRUMLIK FIELD (8A) (M)

▼ DME/DME RNP-0.3 NA. Visibility reduction by helicopters NA.
▲ If local altimeter setting not received, use Huntsville Intl altimeter setting and increase all DAs/MDAs 140 feet.

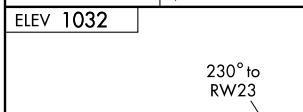
MISSED APPROACH: Climb to 4000 direct FOYGU and via 212° track to WILED and hold.

AWOS-3 119.575	BIRMINGHAM APP CON 132.15 285.45	UNICOM 123.0 (CTAF) 0
--------------------------	--	---------------------------------

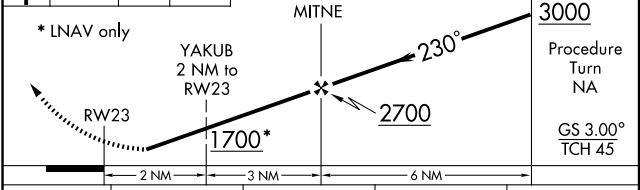


SE-4, 31 MAY 2012 to 28 JUN 2012

SE-4, 31 MAY 2012 to 28 JUN 2012



4000	FOYGU	TRK 212°	WILED	VGSI and RNAV glidepath not coincident (VGSI Angle 3.00/TCH42).	DEZLY
------	-------	----------	-------	---	-------



CATEGORY	A	B	C	D
LPV DA	1331-1 299 (300-1)			
LNAV MDA	1440-1	408 (500-1)	1440-1¼	408 (500-1¼)
CIRCLING	1480-1	1500-1	1500-1½	1600-2
	448 (500-1)	468 (500-1)	468 (500-1½)	568 (600-2)

REIL Rwy 23 **0**
MIRL Rwy 5-23 **0**

ALBERTVILLE, ALABAMA
Amdt 1 12040

ALBERTVILLE/ALBERTVILLE RGNL-THOMAS J BRUMLIK FIELD (8A) (M)
34° 14'N-86° 15'W

RNAV (GPS) RWY 23

RNAV (GPS) RWY 5

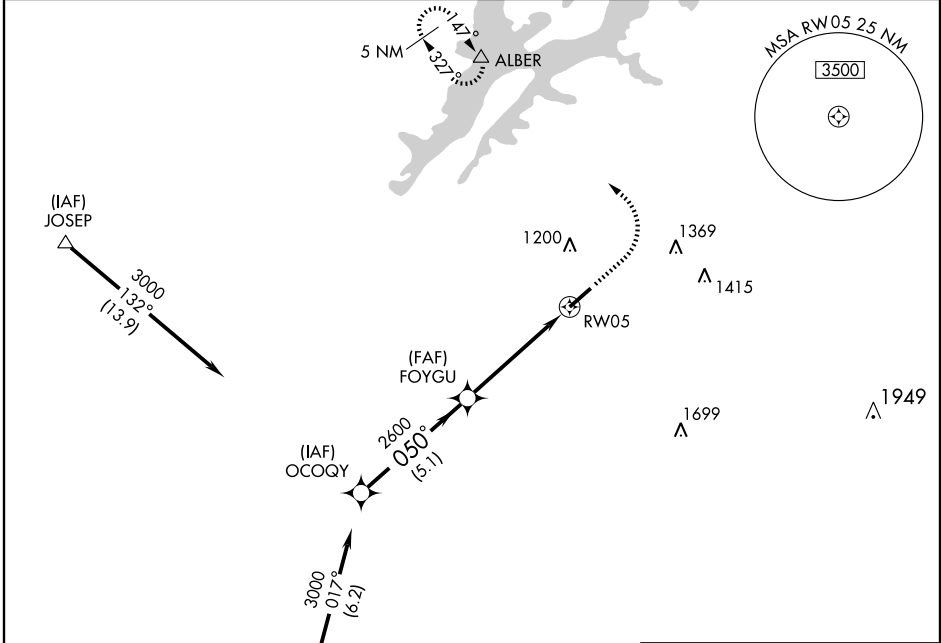
ALBERTVILLE/ALBERTVILLE RGNL-THOMAS J BRUMLIK FIELD (8A) (M)

APP CRS 050°	Rwy Idg 6114
	TDZE 1015
	Apt Elev 1032

Obtain local altimeter setting on CTAF; when not received use Huntsville Intl altimeter setting.
 NA GPS or RNP-0.3 Required. DME/DME RNP-0.3 NA.

MISSED APPROACH: Climb to 1800 then climbing left turn to 3000 direct ALBER WP and hold.

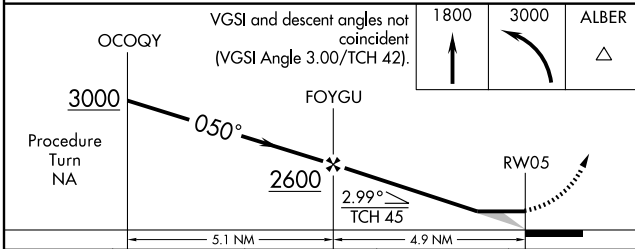
AWOS-3 119.575	BIRMINGHAM APP CON 132.15 285.45	UNICOM 123.0 (CTAF) (M)
--------------------------	--	-----------------------------------



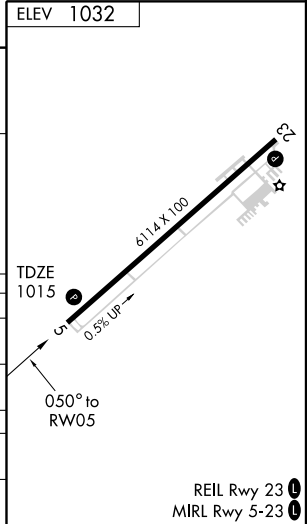
SE-4, 31 MAY 2012 to 28 JUN 2012

SE-4, 31 MAY 2012 to 28 JUN 2012

ELEV 1032	1800	3000	ALBER
-----------	------	------	-------



CATEGORY	A	B	C	D
LNVA MDA	1420-1	405 (400-1)	1420-1¼	405 (400-1¼)
CIRCLING	1480-1 448 (500-1)	1500-1 468 (500-1)	1500-1½ 468 (500-1½)	1600-2 568 (600-2)
HUNTSVILLE INTL ALTIMETER SETTING MINIMUMS				
LNVA MDA	1560-1	545 (600-1)	1560-1½ 545 (600-1½)	1560-1¾ 545 (600-1¾)
CIRCLING	1620-1 588 (600-1)	1640-1 608 (700-1)	1640-1¾ 608 (700-1¾)	1640-2 608 (700-2)



RNAV (GPS) RWY 5

REIL Rwy 23 (M)
 MIRL Rwy 5-23 (M)