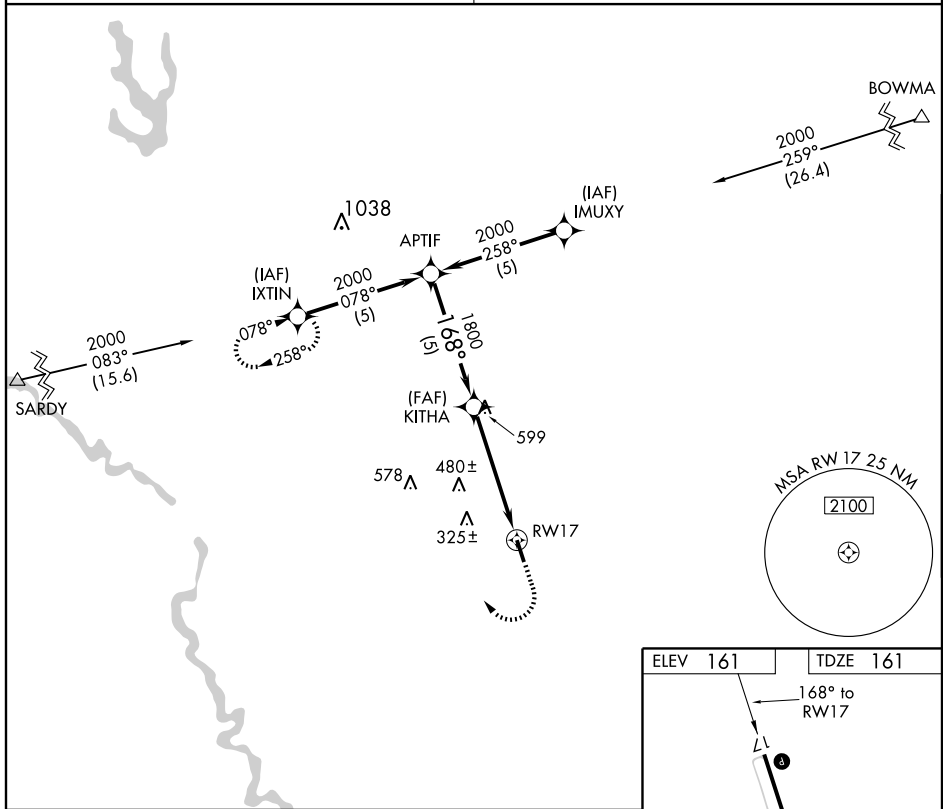


APP CRS	Rwy Idg	<b>5005</b>
<b>168°</b>	TDZE	<b>161</b>
	Apt Elev	<b>161</b>

# GPS RWY 17

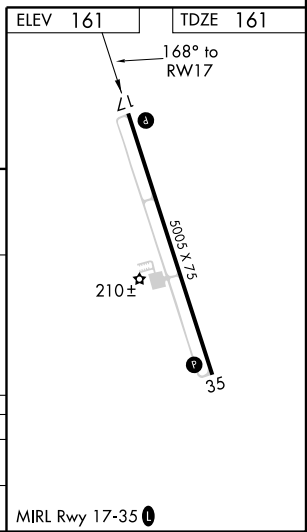
ALLENDALE COUNTY (88J)

<p><b>▽</b> Use Augusta, Ga. altimeter setting.  <b>△ NA</b> Visibility reduction by helicopters NA.</p>	<p><b>MISSED APPROACH:</b> Climb to 1000 then climbing right turn to 2000 direct IXTIN WP and hold.</p>
<p>JACKSONVILLE CENTER  <b>132.5 363.2</b></p>	<p>UNICOM  <b>122.8 (CTAF) 0</b></p>



SE-2, 31 MAY 2012 to 28 JUN 2012

SE-2, 31 MAY 2012 to 28 JUN 2012



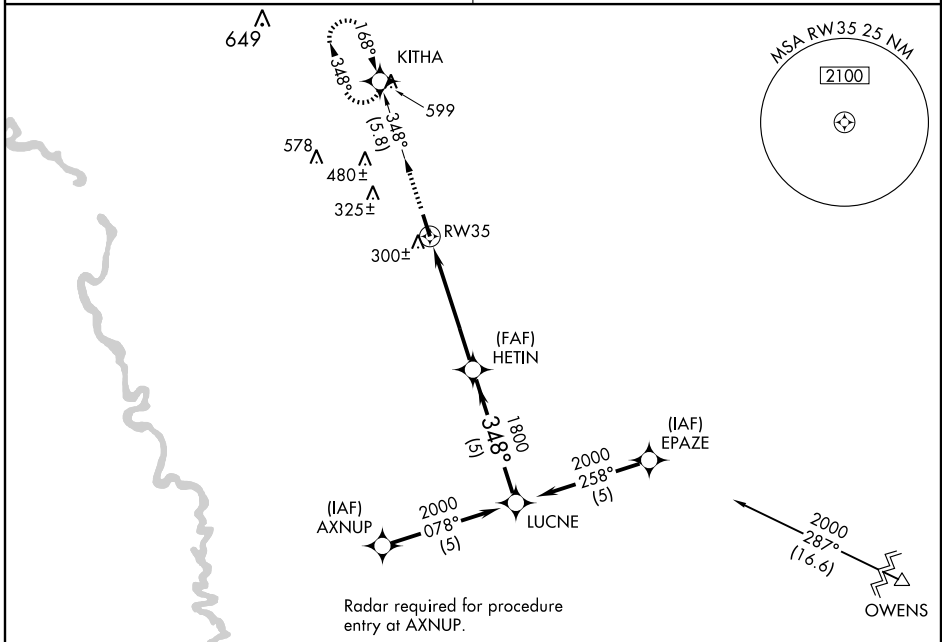
	<p>APTIF</p> <p>2000</p> <p>168°</p> <p>1800</p> <p>3.01 TCH 39</p> <p>RWY 17</p>	<p>1000</p> <p>2000</p> <p>IXTIN</p>		
	<p>5 NM</p> <p>5 NM</p>			
CATEGORY	A	B	C	D
S-17	700-1	539 (600-1)	NA	NA
CIRCLING	700-1	539 (600-1)	NA	NA

MIRL Rwy 17-35 0

APP CRS	Rwy Idg	<b>5005</b>
<b>348°</b>	TDZE	<b>161</b>
	Apt Elev	<b>161</b>

**GPS RWY 35**  
ALLENDALE COUNTY (88J)

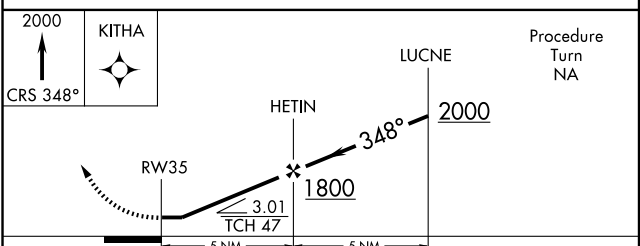
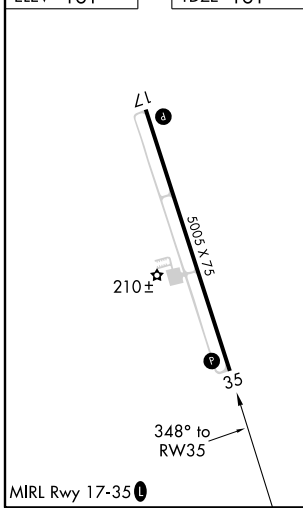
<p>▼ Use Augusta, GA. altimeter setting.</p> <p>▲ NA Visibility reduction by helicopters NA</p>	<p>MISSED APPROACH: Climb to 2000 via 348° course to KITHA WP and hold.</p>
<p>JACKSONVILLE CENTER <b>132.5 363.2</b></p>	<p>UNICOM <b>122.8 (CTAF) 0</b></p>



SE-2, 31 MAY 2012 to 28 JUN 2012

SE-2, 31 MAY 2012 to 28 JUN 2012

ELEV 161	TDZE 161
----------	----------



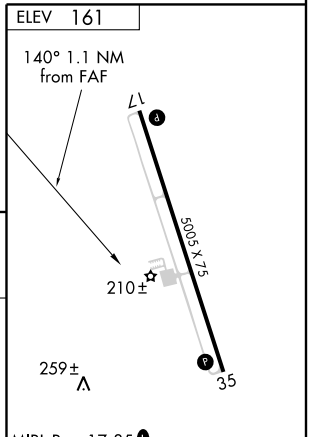
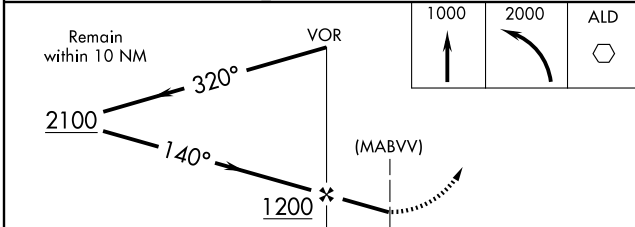
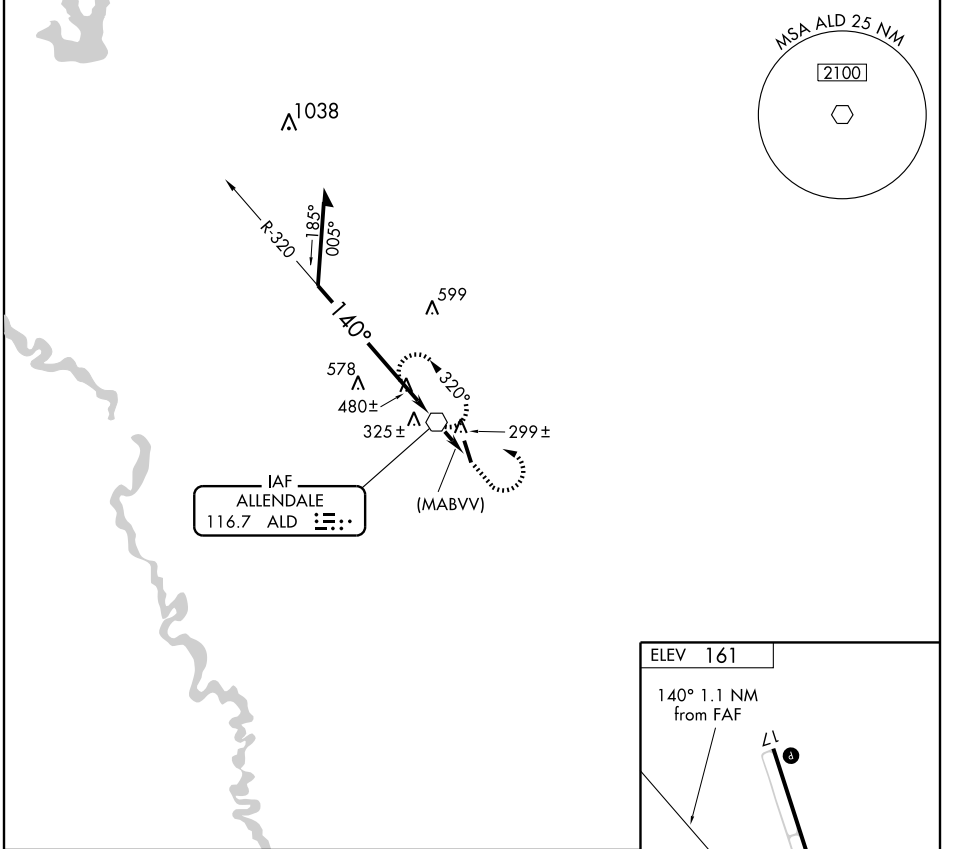
CATEGORY	A	B	C	D
S-35	660-1	499 (500-1)		NA
CIRCLING	700-1	539 (600-1)		NA

VOR ALD <b>116.7</b>	APP CRS <b>140°</b>	Rwy Idg TDZE Apt Elev	<b>N/A</b> <b>N/A</b> <b>161</b>
-------------------------	------------------------	-----------------------------	--

**VOR or GPS-A**  
ALLENDALE COUNTY (88J)

<p>▼ ▲ NA</p> <p>Use Augusta altimeter setting. Visibility reduction by helicopters NA.</p>	<p>MISSED APPROACH: Climb to 1000, then climbing left turn to 2000 direct ALD VOR and hold.</p>
---	---

<p>JACKSONVILLE CENTER <b>132.5 363.2</b></p>	<p>UNICOM <b>122.8 (CTAF) 0</b></p>
---	---



CATEGORY	A	B	C	D	FAF to MAP 1.1 NM												
CIRCLING	760-1	599 (600-1)	NA	NA	<table border="1"> <tr> <td>Knots</td> <td>60</td> <td>90</td> <td>120</td> <td>150</td> <td>180</td> </tr> <tr> <td>Min:Sec</td> <td>1:06</td> <td>0:44</td> <td>0:33</td> <td>0:26</td> <td>0:22</td> </tr> </table>	Knots	60	90	120	150	180	Min:Sec	1:06	0:44	0:33	0:26	0:22
Knots	60	90	120	150	180												
Min:Sec	1:06	0:44	0:33	0:26	0:22												

SE-2, 31 MAY 2012 to 28 JUN 2012

SE-2, 31 MAY 2012 to 28 JUN 2012