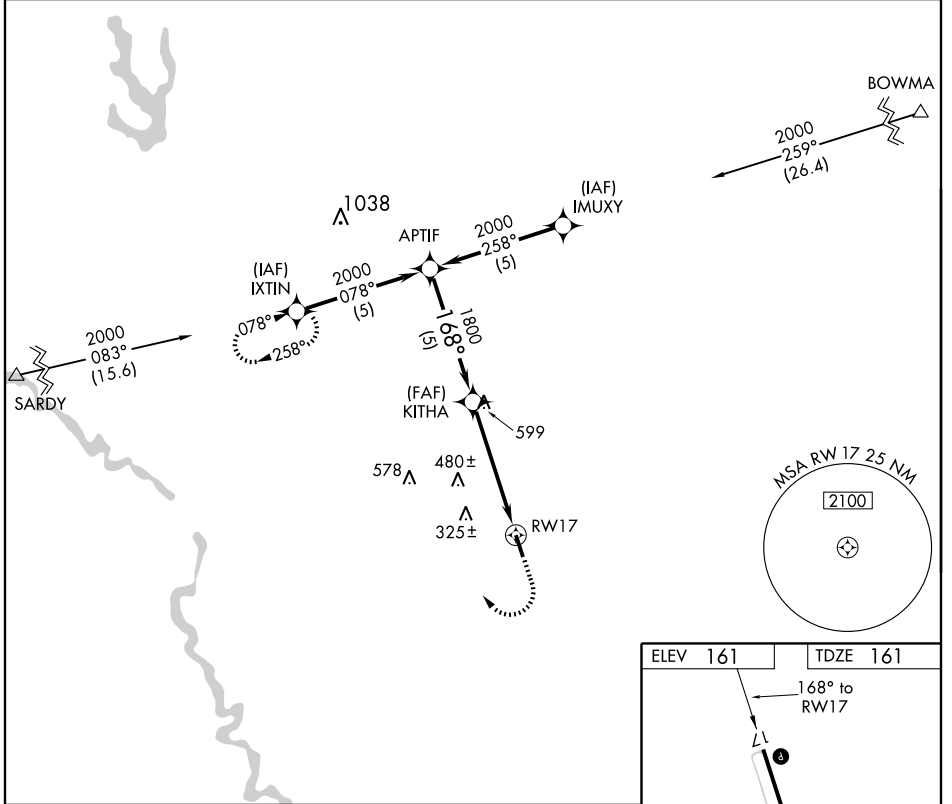


APP CRS	Rwy Idg	<b>5005</b>
<b>168°</b>	TDZE	<b>161</b>
	Apt Elev	<b>161</b>

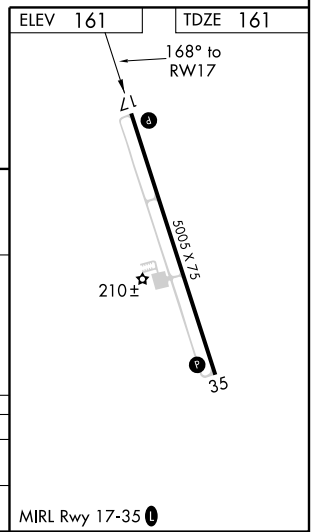
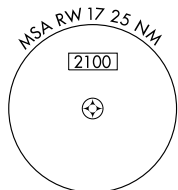
**GPS RWY 17**  
ALLENDALE COUNTY (88J)

<p><b>▽</b> Use Augusta, Ga. altimeter setting. <b>△ NA</b> Visibility reduction by helicopters NA.</p>	<p><b>MISSED APPROACH:</b> Climb to 1000 then climbing right turn to 2000 direct IXTIN WP and hold.</p>
<p>JACKSONVILLE CENTER <b>132.5 363.2</b></p>	<p>UNICOM <b>122.8 (CTAF) 0</b></p>



SE-2, 31 MAY 2012 to 28 JUN 2012

SE-2, 31 MAY 2012 to 28 JUN 2012

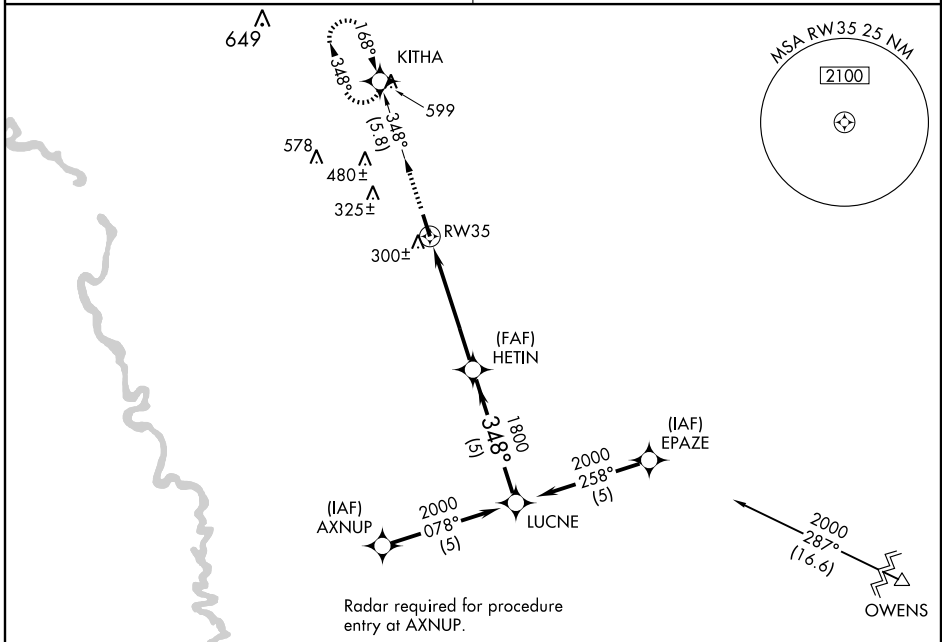


	<p>APTIF</p> <p>2000</p> <p>168°</p> <p>1800</p> <p>3.01 TCH 39</p> <p>RW17</p>	<p>1000</p> <p>2000</p> <p>IXTIN</p>		
Procedure Turn NA	<p>5 NM</p> <p>5 NM</p>			
CATEGORY	A	B	C	D
S-17	700-1	539 (600-1)	NA	NA
CIRCLING	700-1	539 (600-1)	NA	NA

APP CRS	Rwy Idg	<b>5005</b>
<b>348°</b>	TDZE	<b>161</b>
	Apt Elev	<b>161</b>

**GPS RWY 35**  
ALLENDALE COUNTY (88J)

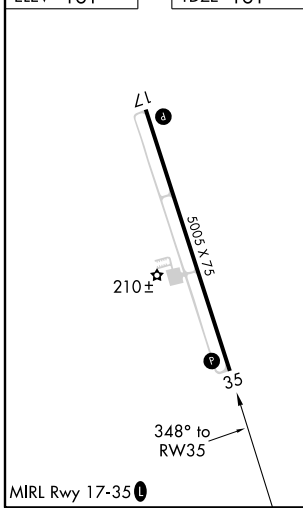
<p>▼ Use Augusta, GA. altimeter setting.</p> <p>▲ NA Visibility reduction by helicopters NA</p>	<p>MISSED APPROACH: Climb to 2000 via 348° course to KITHA WP and hold.</p>
<p>JACKSONVILLE CENTER <b>132.5 363.2</b></p>	<p>UNICOM <b>122.8 (CTAF) 0</b></p>



SE-2, 31 MAY 2012 to 28 JUN 2012

SE-2, 31 MAY 2012 to 28 JUN 2012

ELEV 161	TDZE 161
----------	----------



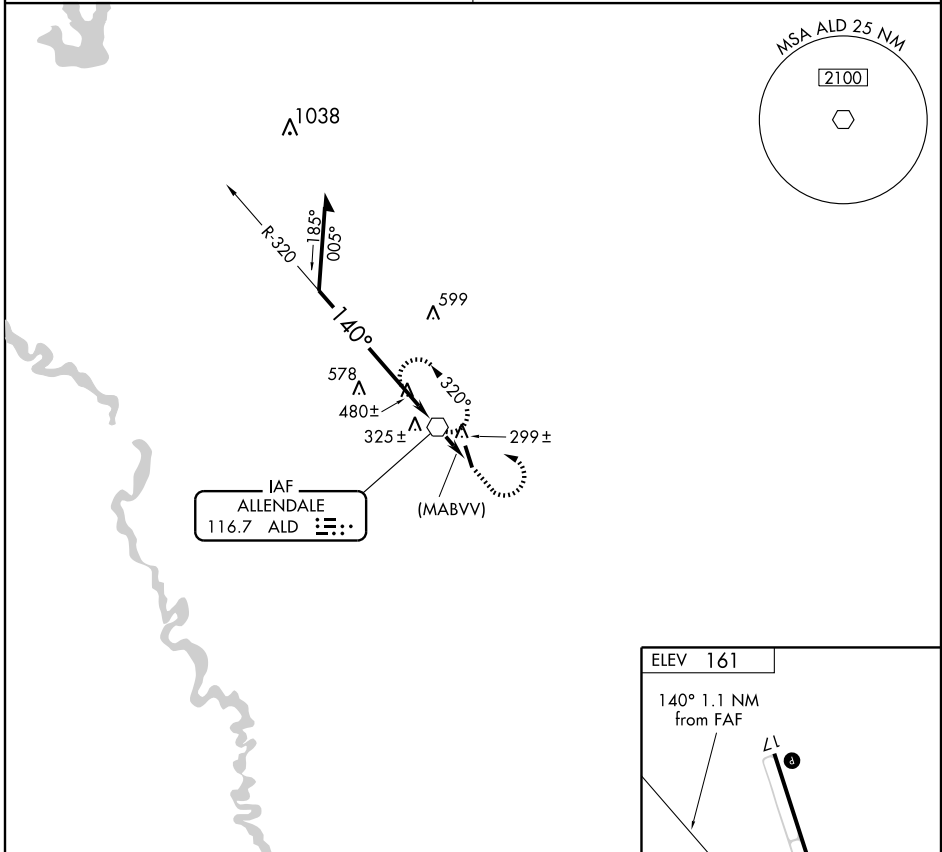
2000 ↑ CRS 348°	KITHA	LUCNE	Procedure Turn NA	
	HETIN	2000		
	RW35	1800		
	3.01 TCH 47	5 NM		
CATEGORY	A	B	C	D
S-35	660-1	499 (500-1)	NA	
CIRCLING	700-1	539 (600-1)	NA	

VOR ALD <b>116.7</b>	APP CRS <b>140°</b>	Rwy Idg TDZE Apt Elev	<b>N/A</b> <b>N/A</b> <b>161</b>
-------------------------	------------------------	-----------------------------	--

**VOR or GPS-A**  
ALLENDALE COUNTY (88J)

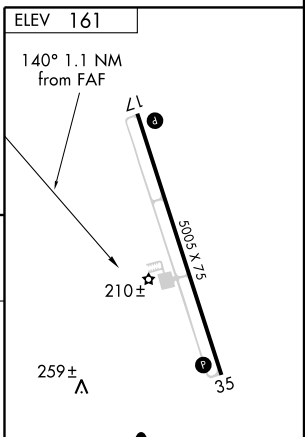
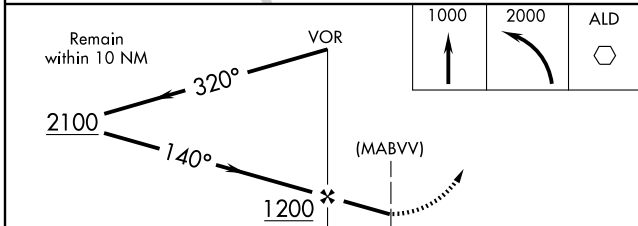
<p><b>▼</b> Use Augusta altimeter setting. <b>▲ NA</b> Visibility reduction by helicopters NA.</p>	<p><b>MISSED APPROACH:</b> Climb to 1000, then climbing left turn to 2000 direct ALD VOR and hold.</p>
--	--

<p>JACKSONVILLE CENTER <b>132.5 363.2</b></p>	<p>UNICOM <b>122.8 (CTAF) 0</b></p>
---	---



SE-2, 31 MAY 2012 to 28 JUN 2012

SE-2, 31 MAY 2012 to 28 JUN 2012



CATEGORY	A	B	C	D	ELEV 161	140° 1.1 NM from FAF
CIRCLING	760-1	599 (600-1)	NA	NA	2100	210±
					1000	2000
					ALD	259±
					1200	35
					1.1 NM	MRL Rwy 17-35 0
						FAF to MAP 1.1 NM
						Knots 60 90 120 150 180
						Min:Sec 1:06 0:44 0:33 0:26 0:22

# TAKE-OFF MINIMUMS AND (OBSTACLE) DEPARTURE PROCEDURES

12152

INSTRUMENT APPROACH PROCEDURE CHARTS

## IFR TAKE-OFF MINIMUMS AND (OBSTACLE) DEPARTURE PROCEDURES

### Civil Airports and Selected Military Airports

ALL USERS: Airports that have Departure Procedures (DPs) designed specifically to assist pilots in avoiding obstacles during the climb to the minimum enroute altitude, and/or airports that have civil IFR take-off minimums other than standard, are listed below. Take-off Minimums and Departure Procedures apply to all runways unless otherwise specified. Altitudes, unless otherwise indicated, are minimum altitudes in MSL.

DPs specifically designed for obstacle avoidance are referred to as Obstacle Departure Procedures (ODPs) and are described below in text, or published separately as a graphic procedure. If the (Obstacle) DP is published as a graphic procedure, its name will be listed below, and it can be found in either this volume (civil), or the applicable military volume, as appropriate. Users will recognize graphic obstacle DPs by the term "(OBSTACLE)" included in the procedure title; e.g., TETON TWO (OBSTACLE). If not specifically assigned a departure procedure (i.e., ODP, SID, or radar vector) as part of an IFR clearance, an ODP may be required to be flown for obstacle clearance, even though not specifically stated in the IFR clearance. When doing so in this manner, ATC should be informed when the ODP being used contains a specified route to be flown, restrictions before turning, and/or altitude restrictions.

Graphic DPs designed by ATC to standardize traffic flows, ensure aircraft separation and enhance capacity are referred to as "Standard Instrument Departures (SIDs)". SIDs also provide obstacle clearance and are published under the appropriate airport section. ATC clearance must be received prior to flying a SID.

CIVIL USERS NOTE: Title 14 Code of Federal Regulations Part 91 prescribes standard take-off rules and establishes take-off minimums for certain operators as follows: (1) Aircraft having two engines or less - one statute mile. (2) Aircraft having more than two engines - one-half statute mile. These standard minima apply in the absence of any different minima listed below.

MILITARY USERS NOTE: Civil (nonstandard) take-off minima are published below. For military take-off minima, refer to appropriate service directives.

NAME	TAKE-OFF MINIMUMS
<b>AHOSKIE, NC</b>	
TRI-COUNTY (ASJ)	
ORIG 11125 (FAA)	
NOTE: <b>Rwy 1</b> , trees beginning at DER, 219' left of centerline, up to 100' AGL/169' MSL. Vehicles on road beginning 206' from DER, 443' left of centerline, up to 10' AGL/79' MSL. Trees beginning 457' from DER, 461' right of centerline, up to 100' AGL/169' MSL. Power lines beginning 5130' from DER, 1827' right of centerline, up to 150' AGL/219' MSL. <b>Rwy 19</b> , vehicles on road 234' from DER, 502' right of centerline, up to 10' AGL/79' MSL. Vehicles on road beginning 244' from DER, left and right of centerline, up to 15' AGL/84' MSL. Trees beginning 717' from DER, 626' right of centerline, up to 100' AGL/169' MSL. Trees beginning 277' from DER, 244' left of centerline, up to 100' AGL/169' MSL.	

NAME	TAKE-OFF MINIMUMS
<b>AIKEN, SC</b>	
AIKEN MUNI (AIK)	
AMDT 1 08045 (FAA)	
TAKE-OFF MINIMUMS: <b>Rwy 1</b> , 200-1¼ or std. w/min. climb of 220' per NM to 800, or alternatively, with std. takeoff min. and a normal 200' NM climb gradient, takeoff must occur no later than 1400' prior to departure end of runway.	
DEPARTURE PROCEDURE: <b>Rwy 19</b> , climb heading 186° to 1100 before turning west.	
NOTE: <b>Rwy 1</b> , terrain 74' from departure end of runway, 9' left of centerline, 496' MSL. Numerous trees beginning 169' from departure end of runway, 35' left of centerline, up to 100' AGL/659' MSL. Tree 6,023' from departure end of runway, 1,609' left of centerline, up to 100' AGL/649' MSL. Terrain beginning 75' from departure end of runway, 246' right of centerline up to 496' MSL. Numerous trees beginning 1322' from departure end of runway, 241' right of centerline, up to 100' AGL/609' MSL. <b>Rwy 7</b> , terrain beginning 51' from departure end of runway, 207' right of centerline up to 499' MSL. Numerous trees beginning 1230' from departure end of runway, 550' right of centerline, up to 100' AGL/609' MSL. Numerous trees beginning 1601' from departure end of runway, 731' left of centerline, up to 56' AGL/563' MSL. <b>Rwy 19</b> , numerous trees beginning at departure end of runway, 110' right of centerline, up to 100' AGL/629' MSL. numerous trees beginning 6' from departure end of runway, 82' left of centerline, up to 100' AGL/639' MSL. <b>Rwy 25</b> , tree 1244' from departure end of runway, 766' right of centerline, 73' AGL/572' MSL. Tree 1506' from departure end of runway, 661' left of centerline, 72' AGL/561' MSL.	

31 MAY 2012 to 28 JUN 2012

31 MAY 2012 to 28 JUN 2012

12152

# TAKE-OFF MINIMUMS AND (OBSTACLE) DEPARTURE PROCEDURES

# TAKE-OFF MINIMUMS AND (OBSTACLE) DEPARTURE PROCEDURES

12152

## ALBEMARLE, NC

STANLY COUNTY (VUJ)  
AMDT 1 11321 (FAA)

TAKE-OFF MINIMUMS: **Rwys 4L, 22R**, NA - VRF runway. **Rwy 4R**, 300-1½ or std. w/min. climb of 276' per NM to 1000.

NOTE: **Rwy 4R**, tree 4312' from DER, 374' right of centerline, 78' AGL/692' MSL. Tree 1.2 NM from DER, 2063' left of centerline, 98' AGL/837' MSL. **Rwy 22L**, trees beginning 190' from DER, 142' right of centerline, up to 82' AGL/682' MSL. Railroad 438' from DER, 403' right of centerline, 23' AGL/620' MSL.

## ALLEDALE, SC

ALLEDALE COUNTY (88J)  
ORIG 10042 (FAA)

NOTE: **Rwy 17**, trees beginning 103' from DER, 52' left of centerline, up to 100' AGL/249' MSL. Vehicles on roadway beginning 286' from DER, 174' left of centerline, up to 15' AGL/174' MSL. Trees beginning 416' from DER, 355' right of centerline, up to 100' AGL/239' MSL. **Rwy 35**, trees beginning 10' from DER, 437' right of centerline, up to 100' AGL/269' MSL. Trees beginning 52' from DER, 503' left of centerline, up to 100' AGL/269' MSL. Trees beginning 780' from DER, 308' right of centerline, up to 100' AGL/279' MSL. Trees beginning 2557' from DER, 117' left of centerline, up to 100' AGL/289' MSL.

## ANDERSON, SC

ANDERSON RGNL

NOTES: **Rwy 5**, multiple trees beginning 1282' from departure end of runway, 172' right of centerline, up to 93' AGL/879' MSL. Multiple trees beginning 85' from departure end of runway, 299' left of centerline, up to 89' AGL/878' MSL. **Rwy 17**, multiple trees beginning 1017' from departure end of runway, 25' right of centerline, up to 73' AGL/800' MSL. Multiple trees beginning 3' from departure end of runway, 47' left of centerline, up to 77' AGL/820' MSL. **Rwy 23**, transmission line tower and multiple trees beginning 1186' from departure end of runway, 552' left of centerline, up to 100' AGL/890' MSL. **Rwy 35**, multiple trees beginning 131' from departure end of runway, 279' right of centerline, up to 87' AGL/854' MSL. Ceilometer and tree beginning 257' from departure end of runway, 319' left of centerline, up to 73' AGL/820' MSL.

## ANDREWS, NC

WESTERN CAROLINA RGNL (RHP)  
AMDT 1A 10014 (FAA)

TAKE-OFF MINIMUMS: **Rwys 8, 26**, max. 180 KIAS 3400-2, max. 210 KIAS 3400-2½, max. 250 KIAS 3400-3. DEPARTURE PROCEDURE: **Rwys 8, 26**, procedure NA at night. Remain within 3 NM of Western Carolina RGNL while climbing in visual conditions to cross airport westbound at or above 4900. Then climb to 7000 via heading 251° and HARRIS (HRS) VORTAC R-356 to HRS VORTAC before proceeding on course.

## ANDREWS, SC

ROBERT F. SWINNE

TAKE-OFF MINIMUMS: **Rwy 18**, 300-1. **Rwy 36**, 400-1. DEPARTURE PROCEDURE: **Rwy s18, 36**, climb runway heading to 500 before turning left.

NOTE: **Rwy 18**, tower 165' from departure end of runway, 500' right of centerline, 118' AGL/145' MSL. Tree 630' from departure end of runway, 350' left of centerline, 87' AGL/114' MSL. Water tank 340' from departure end of runway, 1040' right of centerline, 129' AGL/156' MSL. **Rwy 36**, tree 60' from departure end of runway, 500' left of centerline, 67' AGL/85' MSL. Tree 10' from departure end of runway, 210' right of centerline, 55' AGL/73' MSL. Tree 10' from departure end of runway, 190' left of centerline, 32' AGL/50' MSL. Tree 720' from departure end of runway, 265' right of centerline, 34' AGL/61' MSL.

## ASHEBORO, NC

ASHEBORO RGNL

TAKE-OFF MINIMUMS: **Rwy 3**, std. with a min. climb of 230' per NM to 1200. **Rwy 21**, 400-2 or std. with a min. climb of 340' per NM to 1200.

DEPARTURE PROCEDURE: **Rwy 21**, climb runway heading to 1500 before turning southeast.

## ASHEVILLE, NC

ASHEVILLE RGNL (AVL)  
AMDT 8 09127 (FAA)

TAKE-OFF MINIMUMS: **Rwy 16**, std. with a min. climb of 360' per NM to 6100, or 3300-3 for climb in visual conditions. **Rwy 34**, std. with a min. climb of 380' per NM to 5700, or 3300-3 for climb in visual conditions. DEPARTURE PROCEDURE: **Rwy 16**, climb direct BRA NDB, climb in holding pattern; hold South, right turns, 344° inbound to cross BRA NDB at or above 6100 before proceeding on course or for climb in visual conditions; cross Asheville Rgnl Airport southbound at or above 5300 MSL direct BRA NDB before proceeding on course. NOTE: climb in visual NA at night. **Rwy 34**, climb direct KEANS (IM) LOM, climb in holding pattern; hold North, left turns, 164° inbound to cross KEANS LOM at or above 7000 before proceeding on course or for climb in visual conditions; cross Asheville Rgnl Airport northbound at or above 5300 MSL direct KEANS LOM before proceeding on course. Note: climb in visual NA at night.

NOTE: **Rwy 16**, tree 207' from DER, 529' left of centerline, 100' AGL/2148' MSL. **Rwy 34**, tree 543' from DER, 614' left of centerline, 100' AGL/2194' MSL. Tree 81' from DER, 41' left of centerline, 100' AGL/2172' MSL.

## BAMBERG, SC

BAMBERG COUNTY (99N)

ORIG 11013 (FAA)

TAKE-OFF MINIMUMS: **Rwy 5**, 400-2½ or std. w/min. climb of 259' per NM to 800.

NOTE: **Rwy 5**, trees beginning at DER, 500' left/right of centerline, up to 100' AGL/329' MSL. Power lines 2,527' from DER, crossing centerline, up to 100' AGL/319' MSL. Tower 2 NM from DER, 2738' right of centerline, 380' AGL/627' MSL. **Rwy 23**, trees beginning at DER, 500' left of centerline, up to 100' AGL/319' MSL.

31 MAY 2012 to 28 JUN 2012

31 MAY 2012 to 28 JUN 2012

# TAKE-OFF MINIMUMS AND (OBSTACLE) DEPARTURE PROCEDURES

12152



# TAKE-OFF MINIMUMS AND (OBSTACLE) DEPARTURE PROCEDURES



12152

## BARNWELL, SC

BARNWELL RGNL

TAKE-OFF MINIMUMS: **Rwy 17**, 300-2½ or std. w/min. climb of 241' per NM to 800.

DEPARTURE PROCEDURE: **Rwy 17**, climb heading 165° to 1100 before turning. **Rwy 23**, climb heading 230° to 1100 before turning south.

NOTE: **Rwy 5**, trees beginning 1959' from departure end of runway, 506' right of centerline, up to 100' AGL/329' MSL. Trees beginning 2458' from departure end of runway, 440' left of centerline, up to 100' AGL/359' MSL. **Rwy 17**, trees beginning 3225' from departure end of runway, 1092' right of centerline, up to 100' AGL/339' MSL. Tower 1.9 NM from departure end of runway, 3064' left of centerline, 366' AGL/544' MSL. **Rwy 23**, trees beginning 717' from departure end of runway, 237' right of centerline, up to 100' AGL/339' MSL. Trees beginning 971' from departure end of runway, 254' left of centerline, 100' AGL/349' MSL. Tree 2933' from departure end of runway, 559' left of centerline, 100' AGL/319' MSL. **Rwy 35**, trees beginning 948' from departure end of runway, 570' left of centerline, up to 100' AGL/349' MSL. Trees beginning 2805' from departure end of runway, 440' right of centerline, up to 100' AGL/359' MSL.

## BEAUFORT, NC

MICHAEL J. SMITH FIELD (MRH)

AMDT 3 12152 (FAA)

TAKE-OFF MINIMUMS: **Rwy 21**, 300-1 or std. w/min. climb of 740' per NM to 300.

NOTE: **Rwy 3**, trees beginning 41' from DER, 22' left of centerline, up to 100' AGL/109' MSL. Trees beginning 1030' from DER, 105' right of centerline, up to 100' AGL/114' MSL. **Rwy 8**, trees beginning 187' from DER, 444' right of centerline, up to 100' AGL/104' MSL. Trees beginning 1099' from DER, 140' left of centerline, up to 100' AGL/114' MSL. Building 1280' from DER, 768' left of centerline, 34' AGL/40' MSL. **Rwy 14**, trees beginning 148' from DER, 87' left and right of centerline, up to 100' AGL/114' MSL. **Rwy 21**, vehicles on roadway 262' from DER, 47' left and right of centerline, up to 15' AGL/24' MSL. Trees beginning 475' from DER, 132' left of centerline, up to 100' AGL/104' MSL. Boats beginning 506' from DER, 125' left and right of centerline, up to 77' AGL/77' MSL. Tower 2566' from DER, 925' left of centerline, 162' AGL/172' MSL. **Rwy 26**, trees beginning 152' from DER, 308' left of centerline, 43' AGL/49' MSL. Trees beginning 231' from DER, 417' right of centerline, 18' AGL/24' MSL. Boats beginning 483' from DER, 441' left and right of centerline, up to 77' AGL/77' MSL. **Rwy 32**, trees beginning 30' from DER, 182' left of centerline, up to 100' AGL/104' MSL. Trees beginning 30' from DER, 419' right of centerline, up to 100' AGL/104' MSL. Boats beginning 452' from DER, 45' left and right of centerline, up to 77' AGL/77' MSL.

## BEAUFORT, SC

BEAUFORT COUNTY

DEPARTURE PROCEDURE: **Rwy 7**, climb runway heading to 1700 before turning right. **Rwy 25**, climb runway heading to 300 before turning right.

NOTE: **Rwy 25**, tree 1100' from departure end of runway, 70' left of centerline, 40' AGL/50' MSL. Powerline 1000' from departure end of runway, on centerline, 30' AGL/35' MSL.

## BENNETTSVILLE, SC

MARLBORO COUNTY JETPORT-H.E. AVENT

FIELD (BBP)

AMDT 1 10210 (FAA)

NOTE: **Rwy 7**, pole 97' from DER, 379' right of centerline, 35' AGL/181' MSL. Trees beginning 1415' from DER, 412' left of centerline, up to 86' AGL/232' MSL. Trees beginning 2495' from DER, 256' right of centerline, up to 89' AGL/235' MSL. **Rwy 25**, tree 77' from DER, 148' right of centerline, 18' AGL/156' MSL. Trees beginning 2681' from DER, 382' right of centerline, up to 89' AGL/227' MSL.

## BOGUE MCALF (KNJM),

SWANSBORO, NC. . . . . 11153

TAKE-OFF OBSTACLES: **Rwy 5**, trees 65' AGL/145' MSL, 1649' from DER. Trees, 125' AGL/145' MSL, 1252' from DER, 257' right of centerline. Trees, 125' AGL/145' MSL, 761' from DER, 262' left of centerline.

## BURLINGTON, NC

BURLINGTON-ALAMANCE RGNL

DEPARTURE PROCEDURE: **Rwy 6**, climb runway heading to 1200 before turning left.

## CAMDEN, SC

WOODWARD FIELD

TAKE-OFF MINIMUMS: **Rwy 6**, 200-1¼ or std. w/min. climb of 362' per NM to 700.

NOTE: **Rwy 6**, light 184' from departure end of runway, 500' right of centerline, 27' AGL/316' MSL. Trees beginning 867' from departure end of runway, 113' right of centerline, up to 83' AGL/373' MSL. Trees beginning 736' from departure end of runway, 256' left of centerline, up to 100' AGL/419' MSL. Water tank 5407' from departure end of runway, 1852' left of centerline, 168' AGL/487' MSL. **Rwy 14**, trees and terrain beginning 90' from departure end of runway, 68' left of centerline, up to 100' AGL/409' MSL. Trees and terrain beginning 159' from departure end of runway, 148' right of centerline, up to 100' AGL/399' MSL. **Rwy 24**, trees beginning 137' from departure end of runway, 413' right of centerline, up to 100' AGL/338' MSL. Trees beginning 234' from departure end of runway, 389' left of centerline, up to 100' AGL/347' MSL. **Rwy 32**, trees beginning 3059' from departure end of runway, 455' right of centerline, up to 100' AGL/449' MSL. Tree 5066' from departure end of runway, 858' left of centerline, 100' AGL/429' MSL.

## CHAPEL HILL, NC

HORACE WILLIAMS

DEPARTURE PROCEDURE: **Rwy 9**, climb heading 090° to 1400 before turning southwest. **Rwy 27**, climb heading 270° to 2400 before turning south.

NOTE: **Rwy 9**, trees 1084' from departure end of runway, 250' left of centerline, 82' AGL/551' MSL. Trees 785' from departure end of runway, 401' right of centerline, 56' AGL/520' MSL. **Rwy 27**, trees 200' from departure end of runway, 240' left of centerline, 43' AGL/542' MSL.

31 MAY 2012 to 28 JUN 2012

31 MAY 2012 to 28 JUN 2012

12152



# TAKE-OFF MINIMUMS AND (OBSTACLE) DEPARTURE PROCEDURES



# TAKE-OFF MINIMUMS AND (OBSTACLE) DEPARTURE PROCEDURES

12152

## CHARLESTON, SC

CHARLESTON AFB/INTL (CHS)  
AMDT 7 11237 (FAA)

NOTE: **Rwy 3**, electrical equipment, towers, and trees beginning 98' from DER, 409' right of centerline, up to 104' AGL/136' MSL. Tree 2653' from DER, 993' left of centerline, 100' AGL/139' MSL. **Rwy 15**, trees beginning 1297' from DER, 772' left of centerline, up to 100' AGL/119' MSL. **Rwy 33**, trees beginning 2190' from DER, 1002' right of centerline, up to 100' AGL/139' MSL. Trees beginning 3061' from DER, 1284' left of centerline, up to 100' AGL/144' MSL.

## CHARLESTON EXECUTIVE (JZI)

AMDT 1 10238 (FAA)

DEPARTURE PROCEDURE: **Rwy 22**, climb heading 217° to 600 before turning right.

NOTE: **Rwy 4**, trees beginning 2473' from DER, 530' left of centerline, up to 75' AGL/85' MSL. **Rwy 22**, trees 502' from DER, 181' right of centerline, up to 100' AGL/109' MSL. Trees beginning 2183' from DER, left to right of centerline up to 100' AGL/109' MSL. **Rwy 27**, trees beginning 779' from DER, 84' left of centerline, up to 77' AGL/96' MSL. Pole 1011' from DER, 585' left of centerline, 42' AGL/61' MSL. Trees beginning 90' from DER, 273' right of centerline, up to 60' AGL/78' MSL.

## CHARLOTTE, NC

CHARLOTTE/DOUGLAS INTL (CLT)

AMDT 5 09351 (FAA)

DEPARTURE PROCEDURE: **Rwy 5**, climb heading 055° to 1700 before turning right. **Rwy 36C**, climb heading 003° to 1400 before turning left. **Rwy 36L**, climb heading 003° to 1800 before turning left.

NOTE: **Rwy 5**, trees beginning 1031' from DER, 480' left of centerline, up to 127' AGL/856' MSL. **Rwy 18L**, tower and pole beginning 981' from DER, 708' left of centerline, up to 160' AGL/850' MSL. Trees beginning 1235' from DER, 707' right of centerline, up to 88' AGL/767' MSL. **Rwy 18C**, trees beginning 1688' from DER, 735' left of centerline, up to 108' AGL/787' MSL. Trees beginning 3251' from DER, 995' right of centerline, up to 102' AGL/841' MSL. **Rwy 23**, trees beginning 3899' from DER, 216' left of centerline, up to 99' AGL/818' MSL. Trees beginning 1491' from DER, 603' right of centerline, up to 74' AGL/823' MSL. **Rwy 36C**, trees beginning 1937' from DER, 725' left of centerline, up to 54' AGL/823' MSL. Trees beginning 1420' from DER, 309' right of centerline, up to 114' AGL/823' MSL. **Rwy 36R**, pole and trees beginning 713' from DER, 416' left of centerline, up to 94' AGL/853' MSL. Railroad, antenna, poles and trees beginning 471' from DER, 93' right of centerline, up to 93' AGL/852' MSL.

## CHERAW, SC

CHERAW MUNI/LYNCH BELLINGER FIELD

NOTE: **Rwy 8**, multiple trees 465' from departure end of runway, 176' right of centerline, up to 100' AGL/279' MSL. Power lines 845' from departure end of runway, 501' left of centerline, 65' AGL/243' MSL. Multiple trees 2407' from departure end of runway, 11' left of centerline, up to 100' AGL/279' MSL. **Rwy 26**, trees 1089' from departure end of runway, 213' left of centerline, up to 100' AGL/389' MSL. Trees 1467' from departure end of runway, 63' right of centerline, up to 100' AGL/379' MSL. Power lines 2066' from departure end of runway, 186' right of centerline, 65' AGL/243' MSL.

## CHERRY POINT MCAS (CUNNINGHAM FLD) (KNKT)

CHERRY POINT, NC . . . . 08073

**Rwy 5R, 14L, 23R, 32L**: Diverse departures not authorized.

TAKE-OFF OBSTACLES: **Rwy 5L**: Tree, 2765' from DER, 985' left of centerline, 91' MSL; Tree, 2414' from DER, 974' left of centerline, 87' MSL; Tree, 1470' from DER, 838' left of centerline, 85' MSL; Tree, 686' from DER, 678' left of centerline, 62' MSL; Tree, 1074' from DER, 497' left of centerline, 54' MSL; Tree, 780' from DER, 566' left of centerline, 50' MSL. **Rwy 14R**: Tree, 960' from DER, 727' left of centerline, 47' MSL.

## CHESTER, SC

CHESTER CATAWBA RGNL (DCM)

ORIG 09015 (FAA)

NOTE: **Rwy 5**, trees beginning 383' from departure end of runway, 180' left of centerline up to 100' AGL/719' MSL. **Rwy 17**, trees beginning 54' from departure end of runway, 289' left of centerline up to 100' AGL/739' MSL. Trees beginning 164' from departure end of runway, 291' right of centerline up to 100' AGL/739' MSL. **Rwy 23**, trees beginning 163' from departure end of runway, 379' right of centerline up to 100' AGL/729' MSL. Trees beginning 3229' from departure end of runway, 726' left of centerline up to 100' AGL/779' MSL. **Rwy 35**, vehicle on road 761' from departure end of runway, 684' left of centerline up to 15' AGL/734' MSL. Trees beginning 321' from departure end of runway, 684' right of centerline up to 100' AGL/761' MSL.

## CLEMSON, SC

OCONEE COUNTY RGNL (CEU)

AMDT 3 11321 (FAA)

DEPARTURE PROCEDURE: **Rwy 25**, climb heading 253° to 1900 before turning right.

NOTE: **Rwy 7**, trees beginning 8' from DER, 310' left of centerline, up to 35' AGL/909' MSL. Trees beginning 87' from DER, 93' right of centerline, up to 100' AGL/979' MSL. **Rwy 25**, trees beginning 109' from DER, 6' right of centerline, up to 100' AGL/979' MSL. Trees beginning 123' from DER, 8' left of centerline, up to 83' AGL/971' MSL. Multiple poles beginning 457' from DER, left and right of centerline, up to 48' AGL/936' MSL.

## CLINTON, NC

CLINTON-SAMPSON COUNTY (CTZ)

AMDT 2 11125 (FAA)

NOTE: **Rwy 6**, trees 10' from DER, 393' right of centerline, up to 116' AGL/245' MSL. Trees 1306' from DER, 9' left of centerline, up to 100' AGL/269' MSL. **Rwy 24**, trees 14' from DER, 3' right of centerline, up to 99' AGL/188' MSL. Tree 1718' from DER, 891' left of centerline, 100' AGL/219' MSL.

31 MAY 2012 to 28 JUN 2012

31 MAY 2012 to 28 JUN 2012

12152

# TAKE-OFF MINIMUMS AND (OBSTACLE) DEPARTURE PROCEDURES

# TAKE-OFF MINIMUMS AND (OBSTACLE) DEPARTURE PROCEDURES

12152

## COLUMBIA, SC

COLUMBIA METROPOLITAN (CAE)  
AMDT 1 09239 (FAA)

NOTE: **Rwy 5**, trees beginning 127' from DER, 128' left of centerline, up to 97' AGL/286' MSL. Trees beginning 420' from DER, 21' right of centerline, up to 74' AGL/283' MSL. **Rwy 11**, trees beginning 1896' from DER, 621' left of centerline, up to 48' AGL/277' MSL. Light pole and trees beginning 1043' from DER, 723' right of centerline, up to 69' AGL/268' MSL. **Rwy 23**, trees 3573' from DER, 1191' right of centerline, up to 60' AGL/329' MSL. **Rwy 29**, trees beginning 567' from DER, 535' left of centerline, up to 87' AGL/286' MSL. Trees beginning 1045' from DER, 526' right of centerline, up to 63' AGL/332' MSL.

JIM HAMILTON L.B. OWENS (CUB)  
AMDT 3 09323 (FAA)

TAKE-OFF MINIMUMS: **Rwy 31**, 600-2½ or std. w/min. climb of 345' per NM to 1000.

DEPARTURE PROCEDURE: **Rwy 31**, climb heading 311° to 1500 before turning Northbound.

NOTE: **Rwy 13**, trains beginning at DER, 138' right of centerline, up to 23' AGL/202' MSL. Trees beginning 3' from DER, 88' right of centerline, up to 106' AGL/255' MSL. Trees beginning 131' from DER, 84' left of centerline, up to 97' AGL/256' MSL. **Rwy 31**, trains beginning at DER, 437' left of centerline, up to 23' AGL/222' MSL. Buildings beginning 632' from DER, 260' right of centerline, up to 372' AGL/681' MSL. Buildings beginning 1050' from DER, 20' left of centerline, up to 50' AGL/252' MSL. Tower 2.1 NM from DER, 3510' right of centerline, 422' AGL/747' MSL.

## CONCORD, NC

CONCORD RGNL (JQF)  
AMDT 3 10070 (FAA)

TAKE-OFF MINIMUMS: **Rwy 20**, 300-1¼ or std. w/min. climb of 204' per NM to 1000, or alternatively, with standard takeoff minimums and a normal 200'/NM climb gradient, takeoff must occur no later than 1200' prior to DER.

DEPARTURE PROCEDURE: **Rwy 2**, climb heading 016° to 2200 before proceeding on course. **Rwy 20**, climbing right turn heading 290° to intercept CLT VOR/DME R-039 outbound to 2100 before proceeding on course.

NOTE: **Rwy 2**, poles and trees beginning 2624' from DER, 688' left of centerline, up to 45' AGL/784' MSL. Trees beginning 2107' from DER, 787' right of centerline, up to 24' AGL/783' MSL. **Rwy 20**, street lights beginning 3047' from DER, 196' right of centerline, up to 105' AGL/744' MSL. Trees 1.3 NM from DER, 1544' right of centerline, up to 100' AGL/849' MSL.

## CONWAY, SC

CONWAY-HORRY COUNTY (HYW)  
AMDT 1A 11237 (FAA)

NOTE: **Rwy 4**, trees beginning 58' from DER, 393' left of centerline, up to 108' AGL/147' MSL. **Rwy 22**, trees beginning 184' from DER, 184' left of centerline, up to 86' AGL/125' MSL. Trees beginning 1508' from DER, 212' right of centerline, up to 73' AGL/112' MSL.

## CURRITUCK, NC

CURRITUCK COUNTY RGNL (ONX)  
AMDT 1 09127 (FAA)

DEPARTURE PROCEDURE: **Rwy 5**, climb heading 045° to 1300 before proceeding on course. **Rwy 23**, climb heading 240° to 4000 before turning southbound. NOTE: **Rwy 5**, trees beginning 41' from DER, 166' left of centerline, up to 100' AGL/122' MSL. Tree 4058' from DER, 388' right of centerline, 100' AGL/124' MSL. **Rwy 23**, trees beginning 60' from DER, 384' left of centerline, up to 100' AGL/115' MSL. Trees beginning 201' from DER, 427' right of centerline, up to 100' AGL/121' MSL.

## DARLINGTON, SC

DARLINGTON COUNTY JETPORT

DEPARTURE PROCEDURE: **Rwy 34**, climb heading 343° to 900' before proceeding on course.

NOTE: **Rwy 5**, multiple trees beginning 11' from departure end of runway, 241' left of centerline, up to 97' AGL/246' MSL. Multiple trees beginning 72' from departure end of runway, 29' right of centerline, up to 97' AGL/236' MSL. **Rwy 10**, multiple trees beginning 20' from departure end of runway, 358' left of centerline, up to 74' AGL/243' MSL. Multiple trees beginning 1526' from departure end of runway, 46' right of centerline, up to 100' AGL/289' MSL. **Rwy 16**, multiple trees beginning 70' from departure end of runway, 258' right of centerline, up to 113' AGL/292' MSL. Tree 1295' from departure end of runway, 135' left of centerline, 70' AGL/256' MSL. **Rwy 23**, antenna 18' from departure end of runway, 263' left of centerline, 9' AGL/194' MSL. Trees beginning 241' from departure end of runway, 394' left of centerline, up to 70' AGL/249' MSL. Tree 732' from departure end of runway, 427' right of centerline, 33' AGL/212' MSL. **Rwy 28**, multiple trees beginning 405' from departure end of runway, 214' left of centerline, up to 100' AGL/299' MSL. Tree 2840' from departure end of runway, 46' right of centerline, 100' AGL/309' MSL. **Rwy 34**, tree 2008' from departure end of runway, 273' right of centerline, 87' AGL/277' MSL.

## DILLON, SC

DILLON COUNTY

DEPARTURE PROCEDURE: **Rwys 7,25**, climb to 2200 on runway heading before turning south.

## EDENTON, NC

NORTHEASTERN RGNL (EDE)  
ORIG 09211 (FAA)

NOTE: **Rwy 1**, trees beginning 23' from DER, left and right of centerline, up to 100' AGL/117' MSL. **Rwy 19**, poles beginning 1038' from DER, 567' left of centerline, 37' AGL/47' MSL. Trees beginning 1258' from DER, left and right of centerline, up to 100' AGL/114' MSL.

31 MAY 2012 to 28 JUN 2012

31 MAY 2012 to 28 JUN 2012

12152

# TAKE-OFF MINIMUMS AND (OBSTACLE) DEPARTURE PROCEDURES

# TAKE-OFF MINIMUMS AND (OBSTACLE) DEPARTURE PROCEDURES

12152

## ELIZABETH CITY, NC

ELIZABETH CITY COAST GUARD AIR STATION/RGNL

NOTE: When tethered balloon located approximately 2 NM southeast of airport is flying: **Rwys 1, 10**, climb runway heading to 4000 before turning south. **Rwy 19**, climb to 4000 via ECG R-160 before turning east. **Rwy 28**, climb runway heading to 4000 before turning east.

## ELIZABETH TOWN, NC

CURTIS L BROWN JR FIELD (EYF)

ORIG 09183 (FAA)

DEPARTURE PROCEDURE: **Rwy 15**, climb heading 152° to 2100 before turning left. **Rwy 33**, climb heading 332° to 1100 before proceeding on course.

NOTE: **Rwy 15**, trees beginning 368' from DER, left and right of centerline, up to 100' AGL/214' MSL. **Rwy 33**, vehicle on road 177' from DER, 543' right of centerline, 15' AGL/144' MSL. Trees beginning 344' from DER, left and right of centerline, up to 100' AGL/229' MSL.

## ELKIN, NC

ELKIN MUNI

TAKE-OFF MINIMUMS: **Rwy 7**, 300-1 or std. with a min. climb of 270' per NM to 1300. **Rwys 25**, 300-1 or std. with a min. climb of 290' per NM to 1300.

DEPARTURE PROCEDURE: **Rwys 7, 25**, climb to 3900 before turning north.

## ERWIN, NC

HARNETT RGNL JETPORT

NOTE: **Rwy 5**, multiple trees beginning 1529' from departure end of runway 16' left of centerline, up to 96' AGL/297' MSL. Multiple trees beginning 2775' from departure end of runway, 111' right of centerline, up to 76' AGL/282' MSL. Multiple poles beginning 303' from departure end of runway, 445' left of centerline, up to 17' AGL/239' MSL. Pole beginning 671' from departure end of runway, 610' right of centerline, up to 38' AGL/239' MSL.

NOTE: **Rwy 23**, trees beginning 94' from departure end of runway, 206' right of centerline, up to 64' AGL/252' MSL. Trees beginning 5' from departure end of runway, 296' right of centerline, up to 59' AGL/247' MSL.

## FAYETTEVILLE, NC

FAYETTEVILLE RGNL/GRANNIS FIELD (FAY)

ORIG 08213 (FAA)

NOTE: **Rwy 4**, trees beginning 154' from departure end of runway, 117' right of centerline, up to 79' AGL/189' MSL. Trees beginning 344' from departure end of runway, 240' left of centerline, up to 63' AGL/173' MSL. **Rwy 10**, trees beginning 182' from departure end of runway, 295' right of centerline, up to 43' AGL/223' MSL. Trees beginning 451' from departure end of runway, 383' left of centerline, up to 62' AGL/242' MSL. **Rwy 22**, vehicle on road 98' from departure end of runway, left and right of centerline, up to 15' AGL/186' MSL. Trees beginning 1059' from departure end of runway, 551' right of centerline, up to 94' AGL/264' MSL.

## FLORENCE, SC

FLORENCE RGNL (FLO)

AMDT 5 09071 (FAA)

DEPARTURE PROCEDURE: **Rwy 1**, climb on heading 021° to 1200 prior to turning left.

NOTE: **Rwy 1**, trees beginning 1929' from DER, 29' left of centerline up to 81' AGL/224' MSL. Trees beginning 1786' from DER, 239' right of centerline up to 89' AGL/232' MSL. Poles beginning 1628' from DER, 160' left and right of centerline up to 45' AGL/188' MSL. Antenna 341' from DER, 487' left of centerline up to 47' AGL/190' MSL. Floodlight 3262' from DER, 806' left of centerline up to 103' AGL/246' MSL. Floodlight 1498' from DER, 313' left of centerline up to 39' AGL/182' MSL. **Rwy 9**, trees beginning 3016' from DER, 635' left of centerline up to 91' AGL/212' MSL. Trees beginning 121' from DER, 14' right of centerline up to 97' AGL/218' MSL. Bushes beginning 32' from DER, 289' right of centerline up to 17' AGL/138' MSL. **Rwy 19**, trees beginning 174' from DER, 273' left of centerline up to 54' AGL/166' MSL. Trees beginning 811' from DER, 23' right of centerline up to 69' AGL/181' MSL. Bushes beginning 20' from DER, 338' right of centerline up to 12' AGL/125' MSL. **Rwy 27**, trees beginning 102' from DER, 389' left of centerline up to 30' AGL/159' MSL.

## FRANKLIN, NC

MACON COUNTY (1A5)

ORIG 09071 (FAA)

TAKE-OFF MINIMUMS: **Rwys 7, 25**, Procedure NA at night. 5700-3, for climb in visual conditions.

DEPARTURE PROCEDURE: **Rwys 7, 25**, for climb in visual conditions remain within 3 NM of Macon County airport to cross airport south bound at or above 7600 via ODF R-349 to ODF VORTAC.

NOTE: **Rwy 7**, trees 599' from DER, 124' left of centerline, up to 38' AGL/2037' MSL. Vehicle on road 964' from DER, 720' left of centerline, 15' AGL/2054' MSL. Trees 1666' from DER, 620' right of centerline, up to 100' AGL/2179' MSL. Trees beginning 3090' from DER, 1270' left of and to centerline, up to 100' AGL/3139' MSL. Trees beginning 5665' from DER, 337' right of and to centerline, up to 100' AGL/2699' MSL. **Rwy 25**, vehicle on road 63' from DER, 318' left of centerline, 15' AGL/2054' MSL. Terrain 1000' from DER, on centerline, 2061' MSL. Trees beginning 1737' from DER, 848' left of and to centerline, up to 100' AGL/3519' MSL. Trees beginning 2460' from DER, 440' right of and to centerline, up to 100' AGL/3059' MSL.

## GASTONIA, NC

GASTONIA MUNI (AKH)

AMDT 5 10042 (FAA)

DEPARTURE PROCEDURE: **Rwy 3**, climb heading 049° to 2600 before proceeding West or North. **Rwy 21**, climb heading 214° to 1500 before proceeding North.

NOTE: **Rwy 3**, trees beginning 1200' from DER, 433' left of centerline, up to 80' AGL/859' MSL. Trees beginning 162' from DER, 371' right of centerline, up to 136' AGL/885' MSL. **Rwy 21**, antenna and trees beginning 269' from DER, 210' left of centerline, up to 101' AGL/880' MSL. Trees beginning 252' from DER, 264' right of centerline, up to 113' AGL/882' MSL.

31 MAY 2012 to 28 JUN 2012

31 MAY 2012 to 28 JUN 2012

12152

# TAKE-OFF MINIMUMS AND (OBSTACLE) DEPARTURE PROCEDURES

# TAKE-OFF MINIMUMS AND (OBSTACLE) DEPARTURE PROCEDURES

12152

## GEORGETOWN, SC GEORGETOWN COUNTY

DEPARTURE PROCEDURE: **Rwys 5, 23, 29, 34**, climb runway heading to 500 before turning.

## GOLDSBORO, NC

### WAYNE EXECUTIVE JETPORT (GWW) AMDT 1A 11321 (FAA)

NOTE: **Rwy 5**, tree 184' from DER, 494' right of centerline, 41' AGL/174' MSL. **Rwy 23**, trees beginning 107' from DER, 313' right of centerline, up to 109' AGL/242' MSL. Bush 101' from DER, 487' left of centerline, 9' AGL/142' MSL. Trees beginning 2212' from DER, 12' left of centerline, up to 98' AGL/231' MSL.

## GREENSBORO, NC

### PIEDMONT TRIAD INTL (GSO) AMDT 1 09295 (FAA)

NOTE: **Rwy 5L**, trees beginning 1328' from DER, 524' left of centerline, up to 88' AGL/912' MSL. **Rwy 5R**, terrain and trees beginning 3' from DER, 499' right of centerline, up to 102' AGL/981' MSL. Trees beginning 2751' from DER, 1191' left of centerline, 57' AGL/966' MSL. **Rwy 14**, pole and railroad signal beginning 937' from DER, 604' right of centerline, up to 51' AGL/940' MSL. **Rwy 23L**, trees beginning 834' from DER, 719' left of centerline, up to 65' AGL/934' MSL. **Rwy 23R**, trees beginning 1195' from DER, 191' left of centerline, up to 100' AGL/970' MSL. Utility pole 170' from DER, 540' left of centerline, 33' AGL/936' MSL. Trees beginning 1715' from DER, 358' right of centerline, up to 100' AGL/967' MSL. **Rwy 32**, trees beginning 1' from DER, 289' right of centerline up to 90' AGL/1019' MSL.

## GREENVILLE, NC

### PITT-GREENVILLE

TAKE-OFF MINIMUMS: **Rwy 15**, 300-1½ or std. with a min. climb of 220' per NM to 300. **Rwy 20**, 200-1 or std. with a min. climb of 425' per NM to 300.  
NOTE: **Rwy 2**, tree 1633' from departure end of runway, 741' right of centerline, -115' MSL. Tree 3303' from departure end of runway, 575' left of centerline, -123' MSL. **Rwy 8**, tree 181' from departure end of runway, 517' left of centerline, -108' MSL. Tree 3434' from departure end of runway, 724' right of centerline, -134' MSL. **Rwy 15**, tower 1.2 NM from departure end of runway, 1808' right of centerline, 191' AGL/231' MSL. Rod 1744' from departure end of runway, 966' left of centerline, -86' MSL. **Rwy 20**, tree 2834' from departure end of runway, 986' left of centerline, -171' MSL. Antenna 4857' from departure end of runway, 1798' right of centerline, -165' MSL. **Rwy 26**, tree 1026' from departure end of runway, 546' left of centerline, -108' MSL. Tree 2611' from departure end of runway, 512' right of centerline, -81' MSL. **Rwy 33**, tree 199' from departure end of runway, 372' left of centerline, -92' MSL. Tree 489' from departure end of runway, 473' right of centerline, -91' MSL.

## GREENVILLE, SC

### DONALDSON CENTER

TAKE-OFF MINIMUMS: **Rwy 5**, 300-1¼ or std. w/min. climb of 220' per NM to 1300, or alternatively, w/ standard takeoff minimums and a normal 200'/NM climb gradient, takeoff must occur no later than 1800' prior to departure end of runway.

NOTE: **Rwy 5**, antenna on obstruction light tower 1.7 NM from departure end of runway, 2183' left of centerline, 250' AGL/1167' MSL. Multiple trees beginning 1103' from departure end of runway, 151' right of centerline, up to 50' AGL/985' MSL. **Rwy 23**, stack 2761' from departure end of runway, 1152' left of centerline, 100' AGL/1026' MSL. Multiple trees beginning 2339' from departure end of runway, 231' right of centerline, up to 90' AGL/1001' MSL. Multiple trees beginning 2419' from departure end of runway, 52' left of centerline, up to 95' AGL/1020' MSL.

## GREENVILLE DOWNTOWN (GMU)

### AMDT 6 12012 (FAA)

TAKE-OFF MINIMUMS: **Rwy 10**, 300-2¼ or std. w/min. climb of 340' per NM to 1300. **Rwy 28**, 300-2¼ or std. w/min. climb of 220' per NM to 1500, or alternatively, with standard takeoff minimums and a normal 200' per NM climb gradient, takeoff must occur no later than 1900' prior to DER.

DEPARTURE PROCEDURE: **Rwy 1**, climb heading 006° to 2700 before turning left. **Rwy 10**, climb heading 096° to 1600 before turning left. **Rwy 19**, climb heading 186° to 1600 before turning right. **Rwy 28**, climb heading 276° to 2200 before turning right.  
NOTE: **Rwy 1**, trees beginning 203' from DER, 3' right of centerline, up to 62' AGL/1179' MSL. Poles beginning 286' from DER, 207' right of centerline, up to 50' AGL/1143' MSL. Trees beginning 390' from DER, 528' left of centerline, up to 109' AGL/1123' MSL. **Rwy 10**, trees beginning 29' from DER, 188' right of centerline, up to 100' AGL/1300' MSL. Trees beginning 428' from DER, 161' left of centerline, up to 67' AGL/1051' MSL. Tower 5214' from DER, 810' left of centerline, 152' AGL/1173' MSL. **Rwy 19**, light pole 431' from DER, 527' left of centerline, 32' AGL/1003' MSL. Tree 2905' from DER, 903' right of centerline, 100' AGL/1075' MSL. **Rwy 28**, tree 364' from DER, 249' left of centerline, 46' AGL/1014' MSL. Trees beginning 1038' from DER, 153' right of centerline, up to 90' AGL/1040' MSL. Building 1.9 NM from DER, 2041' right of centerline, 333' AGL/1315' MSL.

## GREENWOOD, SC

### GREENWOOD COUNTY (GRD)

#### ORIG 08017 (FAA)

NOTE: **Rwy 9**, tree 1859' from departure end of runway, 990' left of centerline, 100' AGL/719' MSL.

## GREER, SC

### GREENVILLE-SPARTANBURG INTL-ROGER MILLIKEN (GSP)

#### AMDT 1 10042 (FAA)

DEPARTURE PROCEDURE: **Rwy 4**, climb heading 038° to 2500 before turning left.

NOTE: **Rwy 4**, tree 1422' from DER, 832' right of centerline, 100' AGL/1001' MSL. Tree 1454' from DER, 146' left of centerline, 78' AGL/1023' MSL.

31 MAY 2012 to 28 JUN 2012

31 MAY 2012 to 28 JUN 2012

12152

# TAKE-OFF MINIMUMS AND (OBSTACLE) DEPARTURE PROCEDURES

# TAKE-OFF MINIMUMS AND (OBSTACLE) DEPARTURE PROCEDURES

12152

## HARTSVILLE, SC

HARTSVILLE REGIONAL (HSV)  
ORIG 08045 (FAA)

NOTE: **Rwy 3**, trees beginning 2478' from departure end of runway, 684' right of centerline, up to 100' AGL/489' MSL. Trees beginning 405' from departure end of runway, 363' left of centerline, up to 100' AGL/479' MSL. Road and vehicle 59' from departure end of runway, 418' right of centerline, up to 15' AGL/374' MSL. **Rwy 21**, trees beginning 128' from departure end of runway, 255' right of centerline, up to 100' AGL/439' MSL. Trees beginning 216' from departure end of runway, 325' left of centerline, up to 100' AGL/429' MSL. Road and vehicle 11' from departure end of runway, 335' right of centerline, up to 15' AGL/364' MSL.

## HATTERAS, NC

BILLY MITCHELL (HSE)  
ORIG 09267 (FAA)

NOTE: **Rwy 7**, trees beginning 388' from DER, left of centerline, up to 100' AGL/169' MSL. **Rwy 25**, trees 512' from DER, 103' right of centerline, 100' AGL/110' MSL. Boat mast 2107' from DER, 664' left of centerline, 100' AGL/100' MSL.

## HICKORY, NC

HICKORY RGNL (HKY)  
AMDT 4 11237 (FAA)

DEPARTURE PROCEDURE: Use HICKORY DEPARTURE.

## HILTON HEAD ISLAND, SC

HILTON HEAD

NOTE: **Rwy 3**, numerous trees 328' from departure end of runway, 428' left of departure end of runway, 86' AGL/106' MSL. Numerous trees 319' from departure end of runway, 390' right of departure end of runway, 83' AGL/97' MSL. **Rwy 21**, numerous trees 39' from departure end of runway, 357' right of departure end of runway, 94' AGL/111' MSL. Numerous trees 368' from departure end of runway, 332' left of departure end of runway, 73' AGL/87' MSL. Numerous trees 1421' from departure end of runway, 221' right of departure end of runway, 74' AGL/91' MSL. Numerous trees 1207' from departure end of runway, 329' left of departure end of runway, 85' AGL/99' MSL.

## JACKSONVILLE, NC

ALBERT J. ELLIS

DEPARTURE PROCEDURE: **Rwy 23**, climb on runway heading to 500 before turning right.

## JEFFERSON, NC

ASHE COUNTY

TAKE-OFF MINIMUMS: **Rwys 10, 28**, 1900-3.  
DEPARTURE PROCEDURE: **Rwys 10, 28**, climb visually over the airport to 5000 before proceeding on course.

## KENANSVILLE, NC

DUPLIN COUNTY (DPL)  
ORIG 09015 (FAA)

NOTE: **Rwy 5**, trees beginning 30' from departure end of runway, 156' right of centerline, up to 100' AGL/238' MSL. Trees beginning 1915' from departure end of runway, 126' left of centerline, up to 100' AGL/231' MSL. Vehicles on road 641' from departure end of runway, left and right of centerline, up to 17' AGL/156' MSL. **Rwy 23**, trees beginning 12' from departure end of runway, 329' left of centerline, up to 100' AGL/218' MSL. Trees beginning 16' from departure end of runway, 59' right of centerline, up to 100' AGL/225' MSL.

## KINGSTREE, SC

WILLIAMSBURG RGNL

TAKE-OFF MINIMUMS: **Rwy 32**, 200-1 or std. w/min. climb of 353' per NM to 300.

DEPARTURE PROCEDURE: **Rwy 14**, climb heading 132° to 800 before turning north.

NOTE: **Rwy 32**, multiple trees beginning 165' from departure end of runway, 360' right of centerline, up to 71' AGL/175' MSL.

## KINSTON, NC

KINSTON RGNL JETPORT AT STALLINGS FIELD

DEPARTURE PROCEDURE: **Rwy 5**, climb heading 050° to 1800 before turning east.

NOTE: **Rwy 5**, multiple poles 1521' from departure end of runway, 237' right of centerline, up to 64' AGL/137' MSL. Pole 1625' from departure end of runway, 53' left of centerline, 52' AGL/128' MSL. Multiple trees 1873' from departure end of runway, 110' right of centerline, up to 73' AGL/173' MSL. **Rwy 23**, multiple trees 770' from departure end of runway, 598' left of centerline, up to 87' AGL/186' MSL, multiple trees 1092' from departure end of runway, 109' right of centerline, up to 49' AGL/148' MSL.

## LAKE CITY, SC

LAKE CITY MUNI CJ EVANS FIELD

TAKE-OFF MINIMUMS: **Rwy 1**, 500-2½ or std. w/min. climb of 375' per NM to 700. **Rwy 19**, 300-1 or std. w/min. climb of 404' per NM to 400.

NOTE: **Rwy 1**, tree 1474' from departure end of runway, 189' right of centerline, 62' AGL/143' MSL. Multiple towers beginning 1.6 NM from departure end of runway, 1285' left of centerline, up to 411' AGL/491' MSL. **Rwy 19**, tree 1428' from departure end of runway, 225' right of centerline, 53' AGL/134' MSL. Tank 4906' from departure end of runway, 1349' left of centerline, 180' AGL/254' MSL.

## LANCASTER, SC

LANCASTER COUNTY- MCWHIRTER FIELD (LKR)

AMDT 1 09351 (FAA)

NOTE: **Rwy 6**, trees beginning 176' from DER, 394' left of centerline, up to 26' AGL/526' MSL. Vehicles on roadway 322' from DER, 401' right of centerline, up to 15' AGL/517' MSL. Trees beginning 4704' from DER, 1425' left of centerline, up to 80' AGL/630' MSL. **Rwy 24**, trees beginning 73' from DER, 492' left of centerline, up to 27' AGL/467' MSL.

31 MAY 2012 to 28 JUN 2012

31 MAY 2012 to 28 JUN 2012

12152

# TAKE-OFF MINIMUMS AND (OBSTACLE) DEPARTURE PROCEDURES

# TAKE-OFF MINIMUMS AND (OBSTACLE) DEPARTURE PROCEDURES

12152

## LEXINGTON, NC

DAVIDSON COUNTY

TAKE-OFF MINIMUMS: **Rwy 6**, 300-1 or std. with a min. climb of 290' per NM to 900.

## LIBERTY, NC

CAUSEY

TAKE-OFF MINIMUMS: **Rwys 2, 20**, 300-1.  
DEPARTURE PROCEDURE: **Rwy 20**, for departures 245° CW 020°, climbing left turn direct LIB VORTAC, then proceed outbound via LIB R-256 to 3000 before proceeding on course.

## LINCOLN TON, NC

LINCOLN COUNTY RGNL (IPJ)

AMDT 1 11125 (FAA)

DEPARTURE PROCEDURE: **Rwy 5**, climb heading 063° to 2000 before proceeding on course. **Rwy 23**, climb heading 233° to 2800 before turning left.  
NOTE: **Rwy 5**, trees beginning 1913' from DER, left and right of centerline, up to 100' AGL/999' MSL. **Rwy 23**, trees beginning 1395' from DER, 41' left of centerline, up to 100' AGL/1059' MSL. Trees beginning 2068' from DER, 480' right of centerline, up to 100' AGL/1027' MSL.

## LORIS, SC

TWIN CITY (5J9)

ORIG 10126 (FAA)

NOTE: **Rwy 8**, vehicles on roadway 18' from DER, 127' right of centerline, up to 15' AGL/119' MSL. Trees beginning 159' from DER, 208' right of centerline, up to 100' AGL/204' MSL. Trees beginning 169' from DER, 314' left of centerline, up to 100' AGL/204' MSL. **Rwy 26**, vehicles on roadway 9' from DER, 113' left of centerline, up to 15' AGL/119' MSL. Trees beginning 20' from DER, 182' left of centerline, up to 100' AGL/204' MSL. Hangar 81' from DER, 267' right of centerline, 50' AGL/154' MSL. Aircraft 87' from DER, 171' right of centerline, up to 30' AGL/134' MSL. Building 665' from DER, 139' left of centerline, 30' AGL/134' MSL. Building 1359' from DER, 226' right of centerline, 30' AGL/134' MSL.

## LOUISBURG, NC

TRIANGLE NORTH EXECUTIVE (LHZ)

ORIG 11293 (FAA)

DEPARTURE PROCEDURE: **Rwy 5**, climb heading 046° to 1900 before turning right.  
NOTE: **Rwy 5**, trees beginning 154' from DER, 516' right of centerline, up to 99' AGL/399' MSL. Trees beginning 166' from DER, 492' left of centerline, up to 75' AGL/415' MSL. Terrain 471' from DER, 394' left of centerline, 345' MSL. **Rwy 23**, vehicle on road 98' from DER, 457' right of centerline, up to 15' AGL/377' MSL. Power line 760' from DER, 635' right of centerline, 55' AGL/405' MSL.

## LUMBERTON, NC

LUMBERTON MUNI

TAKE-OFF MINIMUMS: **Rwy 31**, 400-1.  
DEPARTURE PROCEDURE: **Rwy 31**, climb 270° heading to 600 before turning.

## MANNING, SC

SANTEE COOPER RGNL (MNI)

ORIG 09043 (FAA)

NOTE: **Rwy 2**, trees beginning at departure end of runway, 480' right of centerline, up to 100' AGL/229' MSL. Trees beginning 16' from departure end of runway, 221' left of centerline, up to 100' AGL/209' MSL. Vehicle on road 85' from departure end of runway, 468' right of centerline, 15' AGL/117' MSL. **Rwy 20**, trees beginning 125' from departure end of runway, 289' right of centerline, up to 100' AGL/179' MSL. Trees beginning 86' from departure end of runway, 136' left of centerline, up to 100' AGL/189' MSL. Vehicle on road 250' from departure end of runway, on centerline, 15' AGL/110' MSL.

## MANTEO, NC

DARE COUNTY RGNL (MQI)

AMDT 2 11349 (FAA)

TAKE-OFF MINIMUMS: **Rwy 17**, 300-1½ or std. w/min. climb of 250' per N to 300. **Rwy 35**, 300-1½ or std. w/min. climb of 260' per NM to 300.  
NOTE: **Rwy 5**, multiple trees beginning 585' from DER, 417' left and right of centerline, up to 100' AGL/109' MSL. **Rwy 35**, multiple trees beginning 23' from DER, 182' right and left of centerline, up to 100' AGL/116' MSL. Building 267' from DER, 410' right of centerline, 20' AGL/35' MSL. Ship 1 NM from DER, on centerline, 208' AGL/208' MSL.

## MARION, SC

MARION COUNTY

TAKE-OFF MINIMUMS: **Rwy 4**, 400-1 or std. with a min. climb of 330' per NM to 600.  
DEPARTURE PROCEDURE: **Rwy 4**, climb runway heading to 1000 before turning.

## MAXTON, NC

LAURINBURG-MAXTON

NOTE: **Rwy 5**, road 606' from departure end of runway, on centerline, 15' AGL/224' MSL. Trees 1002' from departure end of runway, 474' left of centerline, 67' AGL/267' MSL. **Rwy 13**, aircraft 762' from departure end of runway, 762' left of centerline, 58' AGL/266' MSL. **Rwy 23**, tree 1011' from departure end of runway, 512' right of centerline, 30' AGL/246' MSL. **Rwy 31**, trees beginning 1014' from departure end of runway, 58' left of centerline, up to 54' AGL/271' MSL.

31 MAY 2012 to 28 JUN 2012

31 MAY 2012 to 28 JUN 2012

12152

# TAKE-OFF MINIMUMS AND (OBSTACLE) DEPARTURE PROCEDURES



# TAKE-OFF MINIMUMS AND (OBSTACLE) DEPARTURE PROCEDURES



12152

## MC ENTIRE JNGB (MMT)

EASTOVER, SC. . . . .AMDT 1 12152

..... **Rwy5\***  
..... **Rwy32\*\***

\* Standard with CG of 310'NM to 2700.

\*\* Standard with CG of 230'NM to 2700.

**DEPARTURE PROCEDURE: Rwy 5**, depart on a track of 050 to 2700' before turning on course, or as directed by ATC. **Rwy 32**, depart on a track of 320 to 700' MSL before turning on course, or as directed by ATC.

Departing eastbound, complete turn within 4 NM to avoid R-6001, if unable, advise Control Tower prior to taxi. For climb in visual conditions: Ceiling 1600', Visibility 2.5 SM, remain within 4 NM of KMMT airport, cross KMMT airport at or above 1700' MSL before proceeding on course. Max airspeed 250 KIAS.

**TAKE-OFF OBSTACLES: Rwy 5**, helicopters parked 136' from DER, 323' left of centerline, 17' AGL/276' MSL. Multiple trees left of centerline beginning 2321' out to 2917' from DER, 340' to 876' left of centerline, 70' AGL/309' MSL up to 319' MSL. Multiple trees right of centerline beginning 2193' out to 3840' from DER, 255' to 765' right of centerline, from 70' to 110' AGL/309' MSL up to 379' MSL. Multiple trees 4727' from DER, 1529' right of centerline, 130' AGL/403' MSL. **Rwy 14**, multiple trees beginning from 2328' from DER, 942' right of centerline, 110' AGL/329' MSL. Multiple trees left of centerline beginning 2400' out to 3781' from DER, 682' to 1199' left of centerline, from 90' to 91' AGL/289' to 319' MSL. Aircraft 120' from DER, 400' right of centerline, 39' AGL/255' MSL. Pylon 2665' from DER, 1713' right of centerline, 109' AGL/320' MSL. Pylon 3279' from DER, 1554' left of centerline, 109' AGL/322' MSL. Aircraft 125' from DER, 447' right of centerline, 39' AGL/255' MSL. Pylon 3282' from DER, 1553' left of centerline, 79' AGL/288' MSL. Pylon 2668' from DER, 1714' right of centerline, 79' AGL/286' MSL. **Rwy 23**, multiple trees right and left of centerline beginning from 2444' out to 4131' from DER, 45' to 1297' right and left of centerline, from 90' to 120' AGL/319' to 359' MSL. Aircraft 1921' from DER, 402' right of centerline, 39' AGL/288' MSL. Tower 2885' from DER, 98' right of centerline, 120' AGL/370' MSL. Building 907' from DER, 157' right of centerline, 12' AGL/259' MSL. Wind sensors 490' from DER, 531' left of centerline, 33' AGL/274' MSL. Power lines 2990' from DER, 1057' right of centerline, 35' AGL/294' MSL. Building 1356' from DER, 154' right of centerline, 18' AGL/266' MSL. Tractor 355' from DER, 434' right of centerline, 9' AGL/258' MSL. Tractor 827' from DER, 488' right of centerline, 9' AGL/258' MSL. Aircraft 1921' from DER, 400' right of centerline, 39' AGL/288' MSL. Aircraft 1440' from DER, 807' left of centerline, 39' AGL/278' MSL. Wind sensor 500' from DER, 495' left of centerline, 33' AGL/274' MSL. Building 857' from DER, 160' right of centerline, 10' AGL/259' MSL. Power lines 2991' from DER, 1055' right of centerline, 35' AGL/294' MSL. Building 1408' from DER, 155' right of centerline, 10' AGL/266' MSL. **Rwy 32**, multiple trees right of centerline beginning 3236' out to 3287' from DER, 498' to 997' right of centerline, up to 130' AGL/349' MSL. Multiple trees left of centerline beginning 3637' out to 4867' from DER, 2' to 1652' left of centerline, up to 130' AGL/329' up to 379' MSL. Localizer array 1116' from DER, 2' left of centerline, up to 5' AGL/284' MSL. Windssock 103' from DER, 417' left of centerline, up to 23' AGL/293' MSL.

## MOCKSVILLE, NC

TWIN LAKES

TAKE-OFF MINIMUMS: **Rwy 27**, 300-1

NOTE: **Rwy 9**, numerous trees beginning 35' from departure end of runway, 27' right of centerline, up to 100' AGL/939' MSL. Numerous trees beginning 200' from departure end of runway, 164' left of centerline, up to 100' AGL/919' MSL. **Rwy 27**, numerous trees beginning 200' from departure end of runway, 78' right of centerline, up to 100' AGL/929' MSL. Numerous trees beginning 616' from departure end of runway, 77' left of centerline, up to 100' AGL/909' MSL.

## MONCK'S CORNER, SC

BERKELEY COUNTY (MKS)

ORIG 09015 (FAA)

TAKE-OFF MINIMUMS: **Rwy 5**, 300-1¼ or std. w/min. climb of 215' per NM to 400.

NOTE: **Rwy 5**, trees beginning 17' from departure end of runway, 102' right of centerline, up to 99' AGL/158' MSL. Terrain 30' from departure end of runway, 478' left of centerline, 79' MSL. Trees beginning 964' from departure end of runway, 66' left of centerline, up to 108' AGL/167' MSL. Poles beginning 467' from departure end of runway, 480' left of centerline, up to 24' AGL/103' MSL. Tower 1.4 NM from departure end of runway, 530' left of centerline, up to 228' AGL/292' MSL. **Rwy 23**, trees beginning abeam departure end of runway, 361' right of centerline, up to 100' AGL/199' MSL. Transmission poles beginning 1320' from departure end of runway, 249' right of centerline, up to 63' AGL/142' MSL. Terrain 21' from departure end of runway, 125' left of centerline, 76' MSL. Trees beginning 1141' from departure end of runway, 47' left of centerline, up to 84' AGL/163' MSL. Transmission pole 2503' from departure end of runway, 115' left of centerline, 62' AGL/141' MSL.

## MONROE, NC

CHARLOTTE-MONROE EXECUTIVE (EQY)

AMDT 1 10042 (FAA)

NOTES: **Rwy 5**, trees beginning 150' from DER, 202' left of centerline, up to 100' AGL/799' MSL. Vehicles on road and trees beginning 199' from DER, 259' right of centerline, up to 100' AGL/789' MSL.

## MOORESVILLE, NC

LAKE NORMAN AIRPARK

TAKE-OFF MINIMUMS: **Rwy 14**, std. w a min. climb of 294' per NM to 2900 or 1300-2½ for climb in visual conditions.

DEPARTURE PROCEDURE: **Rwy 14**, for climb in visual conditions: cross Lake Norman Airpark at or above 2000' MSL before proceeding on course. **Rwy 32**, climb heading 324° to 1300 before proceeding on course.

NOTE: **Rwy 14**, terrain and multiple trees beginning 197' from departure end of runway, 308' left of centerline, up to 200' AGL/1099' MSL. Building and multiple trees beginning 158' from departure end of runway, 258' right of centerline, up to 100' AGL/979' MSL. **Rwy 32**, tree 559' from departure end of runway, on centerline, 42' AGL/851' MSL. Multiple trees beginning 47' from departure end of runway, 34' left of centerline, up to 101' AGL/890' MSL. Multiple trees beginning 526' from departure end of runway, 31' right of centerline, up to 97' AGL/886' MSL.

31 MAY 2012 to 28 JUN 2012

31 MAY 2012 to 28 JUN 2012

12152



# TAKE-OFF MINIMUMS AND (OBSTACLE) DEPARTURE PROCEDURES



# TAKE-OFF MINIMUMS AND (OBSTACLE) DEPARTURE PROCEDURES

12152

## MORGANTON, NC

FOOTHILLS RGNL (MRN)  
AMDT 2 11181 (FAA)

TAKE-OFF MINIMUMS: **Rwy 21**, std. w/min. climb of 225' per NM to 3800.

DEPARTURE PROCEDURE: **Rwy 3**, climbing left turn direct FIQ NDB, thence ... **Rwy 21**, climb direct FIQ NDB, thence ...

... continue climbing in holding pattern (Southwest, left turns, 031° inbound) to 5000 before proceeding on course.

NOTE: **Rwy 3**, trees beginning 167' from DER, 388' right of centerline, up to 100' AGL/1379' MSL. Rising terrain beginning 138' from DER, 3' right of centerline, up to 1280' MSL. Trees beginning 1180' from DER, 421' left of centerline, up to 68' AGL/1327' MSL. Rising terrain beginning 39' from DER, 223' left of centerline, up to 1277' MSL. **Rwy 21**, trees beginning 2329' from DER, 1061' right of centerline, up to 100' AGL/1339' MSL. Trees beginning 1681' from DER, 883' left of centerline, up to 100' AGL/1379' MSL.

## MOUNT AIRY, NC

MOUNT AIRY/SURRY COUNTY (MWK)  
AMDT 2 12152 (FAA)

DEPARTURE PROCEDURE: **Rwy 18**, climb heading 180° to 3000 then direct AZW NDB, climb in AZW NDB holding pattern (North, right turns, 179° inbound) to 5500 before proceeding on course. **Rwy 36**, climbing left turn direct AZW NDB, climb in AZW NDB holding pattern (North, right turns, 179° inbound) to 5500 before proceeding on course.

NOTE: **Rwy 18**, trees beginning 67' from DER, left and right of centerline, up to 100' AGL/1308' MSL. **Rwy 36**, power pole 408' from DER, 248' left of centerline, 55' AGL/1315' MSL. Trees beginning 1735' from DER, left and right of centerline, up to 100' AGL/1364' MSL.

## MOUNT OLIVE, NC

MOUNT OLIVE MUNI

TAKE-OFF MINIMUMS: **Rwy 23**, 300-1 or std. with a min. climb of 300' per NM to 500.

## MOUNT PLEASANT, SC

MT PLEASANT RGNL-FAISON FIELD (LRO)  
AMDT 1 10126 (FAA)

DEPARTURE PROCEDURE: **Rwy 17**, climb heading 174° to 1400 before proceeding on course. **Rwy 35**, climb heading 354° to 1900 before turning right.

NOTE: **Rwy 17**, AAO 3.8 NM from DER, 4834' right of centerline, 200' AGL/210' MSL. **Rwy 35**, tree 1900' from DER, 921' left of centerline, 84' AGL/96' MSL. Tree 3043' from DER, 401' right of centerline, 83' AGL/95' MSL.

## MYRTLE BEACH, SC

MYRTLE BEACH INTL (MYR)  
AMDT 2 10042 (FAA)

NOTE: **Rwy 18**, trees beginning 1770' from DER, 664' left of centerline, up to 60' AGL/88' MSL.

## NEWBERN, NC

COASTAL CAROLINA RGNL (EWN)  
AMDT 3B 09183 (FAA)

TAKE-OFF MINIMUMS: **Rwy 4**, 300-1.

DEPARTURE PROCEDURE: **Rwys 4, 32**, climb runway heading to 900' before turning north.

NOTES: **Rwy 22**, 75' AGL trees 958' from departure end of runway, 705' right of centerline. **Rwy 14**, 79' AGL trees 1297' from departure end of runway, 531' right of centerline. **Rwy 32**, 91' AGL trees 743' from departure end of runway, 626' left of centerline.

## NEWBERRY, SC

NEWBERRY COUNTY (EOE)  
AMDT 1 08325 (FAA)

NOTE: **Rwy 4**, multiple trees beginning 1895' from departure end of runway, left and right of centerline, up to 100' AGL/659' MSL. **Rwy 22**, multiple trees beginning 500' from departure end of runway, left and right of centerline, up to 100' AGL/629' MSL.

## NORTH AF AUX (KXNO)

NORTH, SC. . . . . 08157

CAUTION: **Rwy 5/23** diverse departure procedures not authorized at night. **Rwy 5/23** diverse departure not for civil use.

TAKEOFF OBSTACLES: **Rwy 5**, Terrain 1' to 40' from DER 41' to 309' left of centerline, 328' MSL. Possible vehicle on road extending across extended runway centerline 473' from DER 336' left to 711' right of centerline, 15' AGL/349' MSL. Possible C5 on taxiway 12' inward of DER 484' left of centerline, 65' AGL/387' MSL. Possible C5 on taxiway 31' inward of DER 235' left of centerline, 66' AGL/387' MSL. Building 917' from DER 641' right of centerline, 30' AGL/364' MSL. Trees 1215' to 1419' from DER 376' to 570' right of centerline, 92' AGL/398' MSL. Pylon 3627' from DER 1029' left of centerline, 79' AGL/366' MSL. **Rwy 6**, Terrain 1' to 237' from DER 85' to 563' left of centerline, 329' MSL; Possible C5 on taxiway 627' from DER 597' right of centerline, 65' AGL/387' MSL; Possible C5 on taxiway 833' from DER 374' right of centerline, 65' AGL/388' MSL. Trees 2412' to 2812' from DER 749' to 1197' left of centerline, 103' AGL/407' MSL; Trees 1722' to 2044' from DER 844' to 899' left of centerline, 72' AGL/381' MSL; Pylon 2363' from DER 1572' left of centerline, 79' AGL/403' MSL. **Rwy 24**, Pylon 1729' from DER, 1456' right of centerline, 79' AGL/325' MSL.

## NORTH MYRTLE BEACH, SC

GRAND STAND (CRE)  
ORIG 10014 (FAA)

NOTE: **Rwy 5**, vehicles on roadway 8' from DER, 455' right of centerline, up to 16' AGL/41' MSL. Trees beginning 1782' from DER, 6' right of centerline, up to 74' AGL/103' MSL. **Rwy 23**, trees beginning 43' from DER, 399' right of centerline, up to 33' AGL/58' MSL. Sign 60' from DER, 205' left of centerline, 11' AGL/36' MSL. Trees beginning 1393' from DER, 277' left of centerline, up to 62' AGL/88' MSL.

## NORTH WILKESBORO, NC

WILKES COUNTY

TAKE-OFF MINIMUMS: **Rwy 1**, 400-1 or std. with a min. climb of 300' per NM to 1700.

31 MAY 2012 to 28 JUN 2012

31 MAY 2012 to 28 JUN 2012

12152

# TAKE-OFF MINIMUMS AND (OBSTACLE) DEPARTURE PROCEDURES

# TAKE-OFF MINIMUMS AND (OBSTACLE) DEPARTURE PROCEDURES

12152

## OAK ISLAND, NC

CAPE FEAR RGNL JETPORT/HOWIE  
FRANKLIN FLD (SUT)  
ORIG-A 11069 (FAA)

NOTE: **Rwy 5**, trees beginning 323' from DER, 255' left of centerline, up to 80' AGL/99' MSL. Trees beginning 528' from DER, 456' right of centerline, up to 100' AGL/119' MSL. **Rwy 23**, trees beginning 233' from DER, 521' left of centerline, up to 64' AGL/73' MSL. Trees beginning 70' from DER, 319' right of centerline, up to 93' AGL/102' MSL. Boat masts beginning 589' from DER, left and right of centerline, up to 50' AGL/50' MSL.

## ORANGEBURG, SC

ORANGEBURG MUNI (OGB)  
AMDT 3A 10126 (FAA)

DEPARTURE PROCEDURE: **Rwy 5**, climb heading 049° to 1000 before proceeding on course. **Rwy 35**, climb heading 354° to 900 before proceeding on course.  
NOTE: **Rwy 5**, trees beginning 190' from DER, 384' left of centerline, up to 100' AGL/289' MSL. Railroad 768' from DER, 407' right of centerline, 23' AGL/220' MSL. **Rwy 17**, trees beginning 2885' from DER, 1082' left of centerline, up to 100' AGL/282' MSL. Trees beginning 1132' from DER, 798' right of centerline, up to 100' AGL/257' MSL. **Rwy 23**, trees beginning 32' from DER, 45' left of centerline, up to 100' AGL/251' MSL. Power pole 1260' from DER, 127' left of centerline, 50' AGL/202' MSL. Trees beginning 870' from DER, 419' right of centerline, up to 100' AGL/259' MSL. **Rwy 35**, trees beginning 764' from DER, 703' left of centerline, up to 100' AGL/272' MSL. Trees beginning 1567' from DER, 473' right of centerline, up to 100' AGL/282' MSL. Terrain 13' from DER, 34' right of centerline, 174' MSL.

## OXFORD, NC

HENDERSON-OXFORD (HNZ)  
ORIG 08269 (FAA)

TAKE-OFF MINIMUMS: **Rwy 24**, std. w/ min. climb of 245' per NM to 1900 or 700-3 for climb in visual conditions.

DEPARTURE PROCEDURE: **Rwy 24**, for climb in visual conditions: cross Henderson-Oxford airport at or above 1100 MSL before proceeding on course.

NOTE: **Rwy 6**, trees beginning 7' from departure end of runway, 367' left of centerline, up to 100' AGL/629' MSL. **Rwy 24**, trees beginning 804' from departure end of runway, 393' left of centerline, up to 100' AGL/629' MSL.

## PAGELAND, SC

PAGELAND (PYG)  
ORIG 09071 (FAA)

NOTE: **Rwy 5**, trees beginning 365' from DER, 353' right of centerline, up to 100' AGL/689' MSL. Powerlines 593' from DER, 93' right to 109' left of centerline, 100' AGL/679' MSL. Vehicle on road 12' from DER, 377' right of centerline, 15' AGL/582' MSL. Trees beginning 19' from DER, 455' left of centerline, up to 100' AGL/689' MSL. Vehicle on road 612' from DER, 329' left to right of centerline, 15' AGL/594' MSL. **Rwy 23**, trees beginning 29' from DER, 243' right of centerline, up to 100' AGL/679' MSL. Trees beginning 294' from DER, 290' left of centerline, up to 100' AGL/669' MSL. Vehicle on road 34' from DER, 413' left of centerline, 15' AGL/574' MSL. Powerline, 1863' from DER, 987' left of centerline, 79' AGL/609' MSL.

## PELION, SC

LEXINGTON COUNTY AT PELION (6J0)  
ORIG 09155 (FAA)

NOTE: **Rwy 18**, trees beginning 1705' from DER, 1' right of centerline, up to 71' AGL/521' MSL. Trees beginning 429' from DER, 298' left of centerline, up to 34' AGL/484' MSL. Power poles 430' from DER, 298' left of centerline, 33' AGL/484' MSL. **Rwy 36**, trees beginning 2016' from DER, 301' right of centerline, up to 59' AGL/511' MSL.

## PICKENS, SC

PICKENS COUNTY (LQK)  
ORIG 09351 (FAA)

DEPARTURE PROCEDURE: **Rwy 5**, climb heading 048° to 2300 then climbing right turn via heading 120° to 3400 to intercept V20-35. **Rwy 23**, climb heading 228° to 2200 then climbing left turn via heading 120° to 3400 to intercept V20-35.

NOTE: **Rwy 5**, tree 30' from DER, 299' left of centerline, 9' AGL/1022' MSL. Vehicles on roadway, 424' from DER, left and right of centerline, up to 15' AGL/1028' MSL. Trees beginning 1531' from DER, 691' left of centerline, up to 107' AGL/1038' MSL. Tree 3019' from DER, 450' right of centerline, 120' AGL/1095' MSL. **Rwy 23**, tree 906' from DER, 269' left of centerline, 91' AGL/990' MSL. Trees beginning 1015' from DER, 466' right of centerline, up to 106' AGL/1022' MSL.

## PINEHURST/SOUTHERN PINES, NC

MOORE COUNTY (SOP)  
ORIG 09183 (FAA)

NOTE: **Rwy 5**, terrain 448' from DER, 343' right of centerline, 443' MSL. Trees beginning 663' from DER, 137' right of centerline, up to 100' AGL/475' MSL. Terrain 141' from DER, 329' left of centerline, 435' MSL. Trees beginning 176' from DER, 220' left of centerline, up to 100' AGL/529' MSL. **Rwy 23**, pipe 228' from DER, 431' right of centerline, 13' AGL/463' MSL. Antenna 657' from DER, 415' right of centerline, 32' AGL/482' MSL. Trees beginning 701' from DER, 422' right of centerline, up to 100' AGL/579' MSL. Trees beginning 364' from DER, 353' left of centerline, up to 100' AGL/569' MSL.

## PLYMOUTH, NC

PLYMOUTH MUNI (PMZ)  
AMDT 2 11349 (FAA)

TAKE-OFF MINIMUMS: **Rwy 3**, 400-2 or std. w/min. climb of 270' per NM to 500.

DEPARTURE PROCEDURE: **Rwy 3**, climb heading 027° to 500 before turning left.

NOTE: **Rwy 3**, trees beginning 283' from DER, 55' left of centerline, up to 100' AGL/130' MSL. Trees beginning 109' from DER, 8' right of centerline, up to 100' AGL/130' MSL. Antenna 1.5 NM from DER, 3068' left of centerline, 347' AGL/366' MSL. **Rwy 21**, trees beginning 119' from DER, 8' left of centerline, up to 100' AGL/134' MSL. Trees beginning 123' from DER, 39' right of centerline, up to 100' AGL/134' MSL.

31 MAY 2012 to 28 JUN 2012

31 MAY 2012 to 28 JUN 2012

12152

# TAKE-OFF MINIMUMS AND (OBSTACLE) DEPARTURE PROCEDURES

# TAKE-OFF MINIMUMS AND (OBSTACLE) DEPARTURE PROCEDURES

12152

## POPE FLD, NC

FAYETTEVILLE (KPOB) . . . . . 11181

**Rwy 5, 23:** Expect radar vectors from Fayetteville Approach. Rwy 23 standard with minimum climb of 220'/NM to 1000', or 1100-3 for climb in visual conditions to 1200' MSL within 5.49 NM of KPOB airport, then proceed on course, max airspeed of 250 KIAS.

**TAKE-OFF OBSTACLES: Rwy 5,** Multiple trees 1352' to 1545' from DER, 779' right of centerline, up to 34' AGL/242' MSL; Multiple trees 1889' to 3436' from DER, 412' right of centerline, up to 99' AGL/297' MSL; Multiple trees 2004' to 2746' from DER, 997' left of centerline, up to 100' AGL/294' MSL; Multiple trees 2887' to 3743' from DER, 511' left of centerline, up to 119' AGL/311' MSL; Powerline Tower 4181' from DER, 1464' right of centerline, 115' AGL/315' MSL. C-130 18' from DER 263' left of centerline, 35' AGL/215' MSL. **Rwy 23,** Fence 1201' from DER, 71' left of centerline, 247' MSL; Terrain 1901' from DER, 1010' right of centerline, 269' MSL; Multiple trees 3002' to 3349' from DER, 506' right of centerline, up to 70' AGL/328' MSL; Forestry Tower 2.2 NM from DER, 3399' right of centerline, 140' AGL/559' MSL; Tower 3.0 NM from DER, 1.4 NM right of centerline, 220' AGL/746' MSL; Tree 1.0 NM from DER, 502' left of centerline, 61' AGL/375' MSL. C-130 55' from DER 302' right of centerline, 35' AGL/238' MSL; C-130 944' from DER 286' left of centerline, 35' AGL/215' MSL.

## RAEFORD, NC

P K AIRPARK (5W4)

AMDT 1 10322 (FAA)

**NOTE: Rwy 4,** rising terrain 48' from DER, left and right of centerline, up to 332' MSL. Trees beginning 83' from DER, left and right of centerline, up to 100' AGL/429' MSL. Vehicles on road beginning 329' from DER, 189' right of centerline, up to 15' AGL/324' MSL. **Rwy 22,** terrain 42' from DER, left and right of centerline, up to 306' MSL. Trees beginning 268' from DER, left and right of centerline, up to 100' AGL/389' MSL. Vehicles on road beginning 1' from DER, left and right of centerline, up to 15' AGL/314' MSL.

## RALEIGH-DURHAM, NC

RALEIGH-DURHAM INTL (RDU)

AMDT 6 10322 (FAA)

**TAKE-OFF MINIMUMS: Rwy 32,** 300-1.

**DEPARTURE PROCEDURE: Rwy 14,** climb heading 142° to 1400 before turning right. **Rwy 23L,** climb heading 232° to 1900 before turning left. **Rwy 23R,** climb heading 232° to 1800 before turning left.

**NOTE: Rwy 5L,** trees 3802' from DER, 1237' left of centerline, up to 77' AGL/506' MSL. Tank and trees beginning 2011' from DER, 948' right of centerline, up to 138' AGL/547' MSL. **Rwy 5R,** trees 1436' from DER, 803' right of centerline, up to 80' AGL/469' MSL. **Rwy 14,** trees beginning 2021' from DER, 510' left of centerline, up to 116' AGL/545' MSL. Trees beginning 2467' from DER, 2' right of centerline, up to 122' AGL/571' MSL. **Rwy 23L,** trees 1495' from DER, 797' left of centerline, up to 58' AGL/447' MSL. Light pole 1457' from DER, 878' right of centerline, 93' AGL/452' MSL. **Rwy 32,** light poles beginning 1170' from DER, 618' left of centerline, up to 55' AGL/486' MSL. Hangar 1242' from DER, 753' right of centerline, 34' AGL/473' MSL. Control tower 2207' from DER, 910' right of centerline, 231' AGL/660' MSL.

## REIDSVILLE, NC

ROCKINGHAM COUNTY NC SHILOH (SIF)

AMDT 2 09295 (FAA)

**TAKE-OFF MINIMUMS: Rwy 31,** 400-2 or std. w/a min. climb of 535' per NM to 1200.

**NOTE: Rwy 13,** trees beginning 40' from DER, 63' left of centerline, up to 100' AGL/768' MSL. Power pole 1192' from DER, 430' right of centerline, 30' AGL/702' MSL. Tree beginning 1539' from DER, 30' right of centerline, up to 100' AGL/755' MSL. **Rwy 31,** power pole 2054' from DER, 243' right of centerline, 30' AGL/763' MSL. Vehicle on road 31' from DER, 485' left of centerline, 15' AGL/714' MSL. Trees beginning 1164' from DER, 187' right of centerline, up to 100' AGL/1019' MSL. Trees beginning 152' from DER, 317' left of centerline, up to 100' AGL/979' MSL. Rising terrain beginning 123' from DER, 27' left of centerline, up to 939' MSL. Rising terrain beginning 64' from DER, 27' right of centerline, up to 939' MSL.

## ROCK HILL, SC

ROCK HILL/YORK COUNTY/BRYANT FIELD (UZA)

AMT 1 10042 (FAA)

**NOTE: Rwy 2,** trees beginning 99' from DER, 174' right of centerline, up to 102' AGL/747' MSL.

## ROCKINGHAM, NC

RICHMOND COUNTY (RCZ)

AMDT 2 10154 (FAA)

**TAKE-OFF MINIMUMS: Rwy 4, 22,** NA-Environmental. **NOTE: Rwy 14,** multiple trees beginning 676' from DER, 20' right of centerline, up to 100' AGL/441' MSL. Multiple trees beginning 5' from DER, 75' left of centerline, up to 100' AGL/458' MSL. Train beginning 6' from DER, 355' left of centerline, 23' AGL/382' MSL. **Rwy 32,** tree 1152' from DER, 443' left of centerline, 100' AGL/399' MSL. Tree 181' from DER, 428' right of centerline, 100' AGL/429' MSL. Vehicles on roadway 34' from DER, 498' right of centerline, up to 15' AGL/364' MSL.

## ROCKY MOUNT, NC

ROCKY MOUNT-WILSON RGNL (RWI)

AMDT 2 12096 (FAA)

**DEPARTURE PROCEDURE: Rwy 22,** climb heading 222° to 1200 before turning right.

**NOTE: Rwy 4,** trees 1457' from DER, 792' left of centerline, up to 58' AGL/207' MSL. Trees 2452' from DER, 751' right of centerline, up to 72' AGL/231' MSL. **Rwy 22,** trees beginning 1215' from DER, 428' left of centerline, up to 66' AGL/224' MSL. Trees 2452' from DER, 665' right of centerline, up to 45' AGL/204' MSL.

## ROXBORO, NC

PERSON COUNTY

**NOTE: Rwy 6,** trees 1600' from departure end of runway, 200' right of centerline, 100' AGL/729' MSL. **Rwy 24,** trees 562' from departure end of runway, 577' left of centerline, 100' AGL/699' MSL.

31 MAY 2012 to 28 JUN 2012

31 MAY 2012 to 28 JUN 2012

12152

# TAKE-OFF MINIMUMS AND (OBSTACLE) DEPARTURE PROCEDURES



# TAKE-OFF MINIMUMS AND (OBSTACLE) DEPARTURE PROCEDURES



12152

## RUTHERFORDTON, NC

RUTHERFORD COUNTY-MARCHMAN FIELD (FQD)

AMDT 2 07354 (FAA)

TAKE-OFF MINIMUMS: **Rwy 1**, std. w/ min. climb of 434' per NM to 5400, or 2800-3 for climb in visual conditions.

**Rwy 19**, std. w/ min. climb of 255' per NM to 3600, or 2800-3 for climb in visual conditions.

DEPARTURE PROCEDURE: **Rwy 1**, climb heading 009° to 5400 before proceeding on course, or for climb in visual conditions cross Rutherford County/Marchman Field at or above 3700 before proceeding on course. **Rwy 19**, climb heading 189° to 3600 before proceeding on course, or for climb in visual conditions cross Rutherford County/Marchman Field at or above 3700 before proceeding on course.

NOTE: **Rwy 1**, trees abeam departure end of runway, 310' left of centerline, 100' AGL/1159' MSL. Vehicles on roadway 421' from departure end of runway, on centerline 15' AGL/1094' MSL. Trees beginning 480' from departure end of runway, on centerline, up to 100' AGL/1159' MSL. Powerlines left and right of centerline, beginning 581' from departure end of runway, up to 78' AGL/1167' MSL. **Rwy 19**, trees abeam departure end of runway, 239' left of centerline, 100' AGL/1129' MSL. Trees 255' from departure end of runway, 500' right of centerline, 100' AGL/1129' MSL. Trees 1937' from departure end of runway, on centerline, 100' AGL/1119' MSL.

## ST. GEORGE

ST. GEORGE (6J2)

ORIG 08101 (FAA)

NOTE: **Rwy 5**, tree 3021' from departure end of runway, 186' left of centerline, 100' AGL/175' MSL. **Rwy 23**, tree 1401' from departure end of runway, 259' right of centerline, 100' AGL/178' MSL.

## SALISBURY, NC

ROWAN COUNTY (RUQ)

AMDT 1 11181 (FAA)

TAKE-OFF MINIMUMS: **Rwy 20**, 400 - 2½ or std. w/min. climb of 204' per NM to 1300, or alternatively, with standard takeoff minimums and a normal 200' per NM climb gradient, takeoff must occur no later than 1300' prior to DER.

DEPARTURE PROCEDURE: **Rwy 20**, climb heading 160° to 1500 before turning west.

NOTE: **Rwy 2**, trees beginning 106' from DER, 474' right of centerline, up to 68' AGL/787' MSL. **Rwy 20**, trees beginning 167' from DER, 17' right of centerline, up to 114' AGL/913' MSL. Trees beginning 1323' from DER, 4' left of centerline, up to 97' AGL/896' MSL. Building 669' from DER, 361' left of centerline, 25' AGL/788' MSL.

## SALUDA, SC

SALUDA COUNTY (6J4)

ORIG 09351 (FAA)

TAKE-OFF MINIMUMS: **Rwy 19**, 300-2 or std. w/ min. climb of 207' per NM to 900, or alternatively, with standard takeoff minimums and a normal 200'/NM climb gradient, takeoff must occur no later than 1400' prior to DER.

NOTE: **Rwy 1**, numerous trees beginning abeam DER, 40' left of centerline, up to 66' AGL/635' MSL. Numerous trees beginning abeam DER, 35' right of centerline, up to 100' AGL/649' MSL. **Rwy 19**, numerous trees beginning abeam DER, 20' left of centerline, up to 43' AGL/552' MSL. Numerous trees beginning abeam DER, 30' right of centerline, up to 100' AGL/639' MSL.

## SANFORD, NC

RALEIGH EXEC JETPORT AT SANFORD-LEE COUNTY (TTA)

AMDT 1 11237 (FAA)

DEPARTURE PROCEDURE: **Rwy 3**, climb heading 029° to 1100 before turning right. **Rwy 21**, climb heading 209° to 1500 before turning left.

NOTE: **Rwy 3**, trees beginning 3313' from DER, 380' right of centerline, up to 89' AGL/318' MSL. **Rwy 21**, trees beginning 89' from DER, 435' right of centerline, up to 29' AGL/259' MSL.

## SEYMOUR JOHNSON AFB (KGSB)

GOLDSBORO, NC . . . . . 10154

TAKE-OFF MINIMUMS: **Rwy 26**, 200-1½ or Standard with minimum climb of 230 ft/NM to 500' or with standard minimums and a standard 200 ft/NM climb gradient, takeoff must occur no later than 1800' prior to DER. TAKE-OFF OBSTACLES: **Rwy 26**, Trees 110' AGL/251' MSL, 1.2 NM from DER, 1155' left of centerline.

## SHAW AFB (KSSC)

SUMTER, SC . . . . . 07214

TAKE-OFF OBSTACLES: **Rwy 4R**, Terrain 500' left of centerline at the threshold, 235' MSL. **Rwy 22L**, Radio Tower 5137' from DER, 1701' left of centerline, 140' AGL/370' MSL; Glideslope Antenna 563' from DER, 500' right of centerline, 40' AGL/293' MSL. **Rwy 22R**, Terrain 253' from DER, 568' right of centerline, 244' MSL.

## SHELBY, NC

SHELBY-CLEVELAND COUNTY RGNL (EHO)

ORIG 09015 (FAA)

NOTE: **Rwy 5**, trees beginning 74' from departure end of runway, 394' left of centerline, up to 99' AGL/899' MSL. Trees beginning 2018' from departure end of runway, 804' right of centerline, up to 100' AGL/919' MSL.

**Rwy 23**, trees beginning 186' from departure end of runway, 148' left of centerline, up to 93' AGL/903' MSL.

31 MAY 2012 to 28 JUN 2012

31 MAY 2012 to 28 JUN 2012

12152



# TAKE-OFF MINIMUMS AND (OBSTACLE) DEPARTURE PROCEDURES



# TAKE-OFF MINIMUMS AND (OBSTACLE) DEPARTURE PROCEDURES

12152

## SILER CITY, NC

SILER CITY MUNI (5W8)

AMDT 1 10322 (FAA)

DEPARTURE PROCEDURE: **Rwy 4**, 300-2 or std. w/ min. climb of 340' per NM to 1000. **Rwy 22**, 300-1¼ or std. w/ min. climb of 300' per NM to 900.

NOTE: **Rwy 4**, trees beginning 133' from DER, left and right of centerline, up to 100' AGL/869' MSL. Vehicles on road 687' from DER, 180' left of centerline, up to 15' AGL/634' MSL. **Rwy 22**, buildings beginning 438' from DER, 180' right of centerline, up to 35' AGL/634' MSL. Trees beginning 229' from DER, left and right of centerline, up to 100' AGL/779' MSL. Vehicles on road 26' from DER, left and right of centerline, up to 15' AGL/624' MSL.

## SIMMONS AAF (KFBG)

FORT BRAGG, NC . . . . .AMDT 2,  
10154**Rwy 27**, 400-2½\*

\* Or standard with minimum climb of 230 ft/NM to 700. DEPARTURE PROCEDURE: **Rwy 27**, climb heading 273° to 700 before proceeding on course.

TAKE-OFF OBSTACLES: **Rwy 9**, Terrain 233' MSL, beginning 80' from DER, 27' right of centerline. **Rwy 27**, Terrain 283' MSL, beginning 105' from DER, left and right of centerline. Antenna, 292' AGL/584' MSL, 1.9 NM from DER, 3586' right of centerline.

## SMITHFIELD, NC

JOHNSTON COUNTY (JNX)

AMDT 3 10238 (FAA)

TAKE-OFF MINIMUMS: **Rwy 3**, 300-1½ or std w/ min climb of 215' per NM to 500, or alternatively, with standard take-off minimums and a normal 200' per NM climb gradient, take-off must occur no later than 1400' prior to DER. **Rwy 21**, 500-2¾ or std w/ min climb of 265' per NM to 800.

DEPARTURE PROCEDURE: **Rwy 3**, climb heading 032° to 1500 before turning west. **Rwy 21**, climb heading 212° to 1000 before turning northwest.

NOTE: **Rwy 3**, trees beginning 35' from DER, 486' right of centerline, up to 64' AGL/251' MSL. Poles beginning 2022' from DER, 228' right of centerline, up to 44' AGL/232' MSL. Trees beginning 4352' from DER, 543' left of centerline, up to 100' AGL/349' MSL. Poles beginning 2114' from DER, 69' left of centerline, up to 41' AGL/234' MSL. **Rwy 21**, trees beginning 1' from DER, 492' right of centerline, up to 20' AGL/167' MSL. Trees beginning 60' from DER, 478' left of centerline, up to 46' AGL/192' MSL. Tower 2.3 NM from DER, 2883' right of centerline, 380' AGL/614' MSL.

## SPARTANBURG, SC

SPARTANBURG DOWNTOWN MEMORIAL  
(SPA)

AMDT 1 11349 (FAA)

NOTE: **Rwy 5**, vehicles on roadway beginning 20' from DER, left to right of centerline, up to 15' AGL/802' MSL. Trees beginning 189' from DER, 402' right of centerline, up to 100' AGL/857' MSL. Trees beginning 1260' from DER, 660' left of centerline, up to 139' AGL/837' MSL. **Rwy 23**, rising terrain beginning 10' from DER, on centerline, up to 793' MSL. Trees beginning 136' from DER, 451' left of centerline, up to 67' AGL/825' MSL. Trees beginning 3390' from DER, 301' right of centerline, up to 100' AGL/936' MSL. Trees beginning 3476' from DER, 208' left of centerline, up to 87' AGL/884' MSL.

## STATESVILLE, NC

STATESVILLE RGNL

TAKE-OFF MINIMUMS: **Rwy 28**, 300-1¼ or std. with a min. climb of 220' per NM to 1300.

NOTE: **Rwy 28**, powerline tower 8880' from departure end of runway, 858' right of centerline, 180' AGL/1199' MSL.

## SUMMERVILLE, SC

SUMMERVILLE (DYB)

AMDT 1 10210 (FAA)

DEPARTURE PROCEDURE: **Rwy 6**, climb heading 056° to 600 before turning left. **Rwy 24**, climb heading 236° to 800 before turning right.

NOTE: **Rwy 6**, vehicles on road beginning 7' from DER, left and right of centerline, up to 15' AGL/64' MSL. Trees beginning 556' from DER, left and right of centerline, up to 100' AGL/154' MSL. **Rwy 24**, tree 58' from DER, 459' left of centerline, 84' AGL/114' MSL.

## SUMTER, SC

SUMTER (SMS)

AMDT 1 09295 (FAA)

TAKE-OFF MINIMUMS: **Rwys 14, 32**, NA-VFR only. **Rwy 23**, std. w/ a min. climb of 221' per NM to 800 or 900-2½ for climb in visual conditions.

DEPARTURE PROCEDURE: **Rwy 23**, for climb in visual conditions: cross Sumter airport at or above 900 MSL before proceeding on course.

NOTE: **Rwy 23**, trees beginning 2876' from DER, 559' left of centerline, up to 72' AGL/251' MSL. Trees beginning 117' from DER, 210' right of centerline, up to 86' AGL/265' MSL.

## TARBORO, NC

TARBORO-EDGECOMBE

DEPARTURE PROCEDURE: **Rwy 27**, climb runway heading to 500 before turning.

31 MAY 2012 to 28 JUN 2012

31 MAY 2012 to 28 JUN 2012

# TAKE-OFF MINIMUMS AND (OBSTACLE) DEPARTURE PROCEDURES

12152

# TAKE-OFF MINIMUMS AND (OBSTACLE) DEPARTURE PROCEDURES

12152

## UNION, SC

### UNION COUNTY, TROY SHELTON FIELD

NOTE: **Rwy 5**, tree 1315' from departure end of runway, 400' left of centerline, 80' AGL/675' MSL. Tree 1340' from departure end of runway, 280' right of centerline, 51' AGL/678' MSL. **Rwy 23**, tree 38' from departure end of runway, 115' right of centerline, 10' AGL/583' MSL. Tree 58' from departure end of runway, 80' left of centerline, 28' AGL/584' MSL. Tree 1890' from departure end of runway, 400' right of centerline, 85' AGL/657' MSL. Tree 2005' from departure end of runway, 425' left of centerline, 95' AGL/667' MSL.

## WADESBORO, NC

### ANSON COUNTY-JEFF CLOUD FIELD (AFP) AMDT 2 11069 (FAA)

TAKE-OFF MINIMUMS: **Rwy 16**, 400-2¼ or std. w/min. climb of 220' per NM to 800, or alternatively, with std. takeoff minimums and a normal 200' per NM climb gradient, take-off must occur no later than 1900' prior to DER.

NOTE: **Rwy 16**, trees beginning 64' from DER, 298' left of centerline, up to 70' AGL/359' MSL. Terrain beginning 112' from DER, 375' right of centerline, up to 0' AGL/311' MSL. Trees 1.8 NM from DER, 2732' left of centerline, up to 100' AGL/609' MSL. **Rwy 34**, trees beginning 722' from DER, 39' left of centerline, up to 84' AGL/403' MSL. Trees beginning 446' from DER, 9' right of centerline, up to 85' AGL/384' MSL.

## WALLACE, NC

### HENDERSON FIELD (ACZ) ORIG 09071 (FAA)

TAKE-OFF MINIMUMS: **Rwy 9**, 300-1 or std. w/min. climb of 389' per NM to 400.  
NOTE: **Rwy 9**, trees 2329' from DER, 462' left of centerline, 100' AGL/119' MSL. Pole 5056' from DER, 1074' left of centerline, 183' AGL/216' MSL. **Rwy 27**, vehicles on roadway 299' from DER, 421' right of centerline, 15' AGL/54' MSL. Trees 4916' from DER, 1296' left of centerline, 100' AGL/169' MSL.

## WALNUT COVE, NC

### MEADOW BROOK FIELD (N63) AMDT 1 10014 (FAA)

TAKE-OFF MINIMUMS: **Rwy 16**, 400-3 or std. w/min. climb of 324' per NM to 1400. **Rwy 34**, 600-3 w/min. climb of 267' per NM to 1400 or 1800-3 for climb in visual conditions.

DEPARTURE PROCEDURE: **Rwy 16**, climb heading 166° to 1400 before proceeding on course. **Rwy 34**, climb heading 001° to 2800 before turning West or for climb in visual conditions: cross Meadow Brook Field airport at or above 2300 before proceeding on course.

NOTE: **Rwy 16**, vehicle on road 428' from DER, 591' left of centerline, up to 15' AGL/674' MSL. Trees beginning 541' from DER, 618' right of centerline, up to 65' AGL/804' MSL. Tank 5738' from DER, 742' right of centerline, 157' AGL/863' MSL. Powerline 2525' from DER, 266' right of centerline, 79' AGL/716' MSL. **Rwy 34**, trees beginning 961' from DER, 389' right of centerline, up to 65' AGL/844' MSL. Trees beginning 1056' from DER, 744' left of centerline, up to 65' AGL/844' MSL.

## WALTERBORO, SC

### LOW COUNTRY RGNL

TAKE-OFF MINIMUMS: **Rwy 5**, 300-1 or std. with a min. climb of 280' per NM to 300.  
NOTE: **Rwy 5**, 93' AGL tree 960' from departure end of runway, 710' right of centerline. **Rwy 9**, 75' AGL tree 365' from departure end of runway, 575' right of centerline. **Rwy 17**, 74' AGL tree 508' from departure end of runway, 635' right of centerline. **Rwy 23**, 84' AGL tree 710' from departure end of runway, 675' left of centerline. **Rwy 35**, 69' AGL tree 1062' from departure end of runway, 690' right of centerline.

## WASHINGTON, NC

### WARREN FIELD

TAKE-OFF MINIMUMS: **Rwy 23**, 300-1 or std. with a min. climb of 250' per NM to 300.  
DEPARTURE PROCEDURE: **Rwys 17, 29, 35**, climb runway heading to 400 before turning.

## WAXHAW, NC

### JAARS-TOWNSEND (N52) ORIG 09071 (FAA)

TAKE-OFF MINIMUMS: **Rwy 4**, 300-1 or std. w/min. climb of 255' per NM to 900, or alternatively, with standard takeoff minimums and a normal 200'/NM climb gradient, takeoff must occur no later than 2200' prior to DER.

NOTE: **Rwy 4**, trees beginning 3' from DER, left and right of centerline, up to 100' AGL/759' MSL. **Rwy 22**, trees beginning 2' from DER, left and right of centerline, up to 100' AGL/709' MSL.

## WHITEVILLE, NC

### COLUMBUS COUNTY MUNI (CPC) ORIG 09183 (FAA)

NOTE: **Rwy 6**, trees beginning 2145' from DER, 553' right of centerline, up to 100' AGL/189' MSL. Trees beginning 2690' from DER, 838' left of centerline, up to 100' AGL/169' MSL. **Rwy 24**, trees beginning 1706' from DER, 831' right of centerline, up to 100' AGL/209' MSL. Trees beginning 732' from DER, 396' left of centerline, up to 100' AGL/209' MSL.

## WILLIAMSTON, NC

### MARTIN COUNTY

NOTE: **Rwy 3**, trees beginning 158' from departure end of runway, 98' right of centerline, up to 100' AGL/172' MSL. Trees beginning 3041' from departure end of runway, 168' left of centerline up to 100' AGL/172' MSL. **Rwy 21**, trees beginning 1310' from departure end of runway, 57' right of centerline up to 100' AGL/168' MSL. Trees beginning 1393' from departure end of runway, 411' left of centerline up to 100' AGL/168' MSL. Vehicle on road 428' from departure end of runway, 15' AGL/80' MSL.

31 MAY 2012 to 28 JUN 2012

31 MAY 2012 to 28 JUN 2012

# TAKE-OFF MINIMUMS AND (OBSTACLE) DEPARTURE PROCEDURES

12152



12152

**WILMINGTON, NC****WILMINGTON INTL**

NOTE: **Rwy 6**, tree 2723' from departure end of runway, 558' left of centerline 57' AGL/90' MSL. Tree 3201' from departure end of runway, 401' right of centerline 73' AGL/110' MSL. Tree 3552' from departure end of runway, 643' right of centerline, 78' AGL/118' MSL. **Rwy 17**, multiple trees beginning 177' from departure end of runway, 438' right of centerline, up to 32' AGL/49' MSL. Tree 187' from departure end of runway, 545' left of centerline, 24' AGL/41' MSL. Multiple trees beginning 418' from departure end of runway, 540' left of centerline, up to 39' AGL/53' MSL. Tree 620' from departure end of runway, 246' left of centerline, 24' AGL/38' MSL. Tree 1468' from departure end of runway, 684' right of centerline, 66' AGL/83' MSL. Tree 1689' from departure end of runway, 592' right of centerline, 52' AGL/69' MSL. Transmission lines 3347' from departure end of runway, 1300' left to 1300' right of centerline, 135' AGL/160' MSL. **Rwy 24**, tree 163' from departure end of runway, 454' left of centerline, 61' AGL/75' MSL. Multiple trees beginning 1663' from departure end of runway, 277' left of centerline, up to 66' AGL/83' MSL. **Rwy 35**, tree 1500' from departure end of runway, 300' right of centerline, 50' AGL/83' MSL. Funnel 1796' from departure end of runway, 882' left of centerline, 57' AGL/90' MSL. Multiple trees beginning 1916' from departure end of runway, 138' right of centerline, up to 94' AGL/131' MSL. Multiple trees beginning 2486' from departure end of runway, 143' left of centerline, up to 107' AGL/140' MSL.

**WILSON, NC****WILSON INDUSTRIAL AIR CENTER**

DEPARTURE PROCEDURE: For departures 260° CW 320°. **Rwy 27**, climbing left turn to 2500 on heading 260° before proceeding on course. **Rwys 15, 21**, climbing right turn to 2500 on heading 260° before proceeding on course. **Rwys 3, 9, 33**, climbing left turn to 2500 on heading 320° before proceeding on course.

**WINNSBORO, SC****FAIRFIELD COUNTY (FDW)****ORIG 10322 (FAA)**

NOTE: **Rwy 4**, trees beginning 46' from DER, 241' right of centerline, up to 32' AGL/588' MSL. Trees beginning 68' from DER, 261' left of centerline, up to 88' AGL/613' MSL. Trees beginning 517' from DER, 25' right of centerline, up to 100' AGL/640' MSL. Trees beginning 533' from DER, 23' left of centerline, up to 97' AGL/620' MSL. **Rwy 22**, poles beginning 70' from DER, 399' left of centerline, up to 46' AGL/624' MSL. Trees beginning 163' from DER, 43' left of centerline, up to 57' AGL/632' MSL. Pole 666' from DER, 436' right of centerline, 44' AGL/609' MSL. Trees beginning 708' from DER, 28' right of centerline, up to 68' AGL/633' MSL. Trees beginning 1528' from DER, 13' right of centerline, up to 87' AGL/645' MSL. Trees beginning 1597' from DER, 100' left of centerline, up to 111' AGL/669' MSL.

**WINSTON-SALEM, NC****SMITH REYNOLDS (INT)****AMDT 6 09015 (FAA)**

TAKE-OFF MINIMUMS: **Rwy 22**, 500-2¼ or std. with a min. climb of 330' per NM to 1600.

NOTE: **Rwy 4**, multiple trees beginning 1014' from departure end of runway, 159' left of centerline, up to 92' AGL/1041' MSL. Multiple trees beginning 2' from departure end of runway, 195' right of centerline, up to 62' AGL/1051' MSL. **Rwy 15**, bush and multiple trees beginning 109' from departure end of runway, 237' left of centerline, up to 81' AGL/960' MSL. Multiple trees beginning 123' from departure end of runway, 433' right of centerline, up to 66' AGL/945' MSL. **Rwy 22**, multiple trees beginning 376' from departure end of runway, 136' left of centerline, up to 65' AGL/1014' MSL. Antenna 4538' from departure end of runway, 1044' left of centerline, 189' AGL/1138' MSL. Tower 2.1 NM from departure end of runway, 2784' left of centerline, 468' AGL/1395' MSL. Antenna on building 2.3 NM from departure end of runway, 3230' left of centerline, 460' AGL/1376' MSL. **Rwy 33**, floodlight, multiple hangars, poles, and trees beginning 230' from departure end of runway, 41' left of centerline, up to 74' AGL/1083' MSL. Pole, windsock, multiple buildings and trees beginning 13' from departure end of runway, 141' right of centerline, up to 85' AGL/1084' MSL.

31 MAY 2012 to 28 JUN 2012

31 MAY 2012 to 28 JUN 2012

12152