

APP CRS	Rwy Idg	2558
265°	THRE	351
	Apt Elev	351

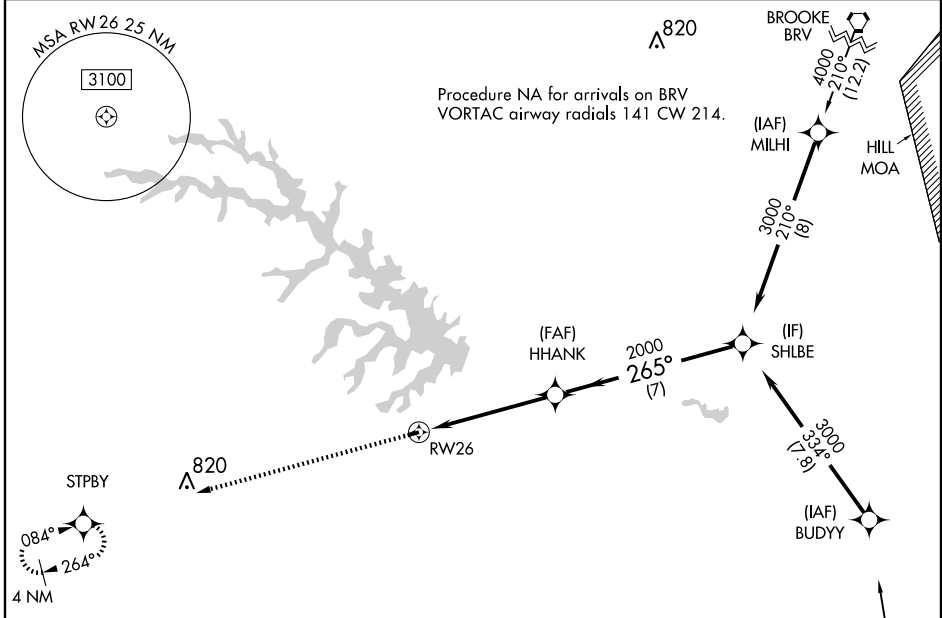
RNAV (GPS) RWY 26

BUMPASS/ LAKE ANNA (7W4)

NA Procedure NA at night. DME/DME RNP-0.3 NA. Visibility reduction by helicopters NA. Use Louisa County/Freeman Field altimeter setting; when not received, procedure NA.

MISSED APPROACH: Climb to 3000 direct STPBY and hold.

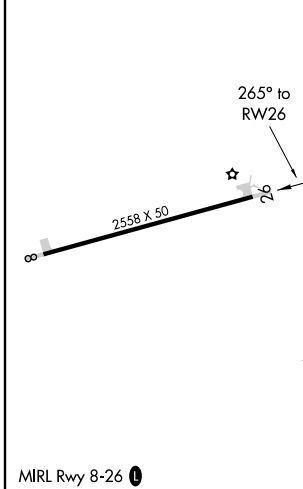
LOUISA COUNTY/FREEMAN FIELD AWOS-3 119.475	POTOMAC APP CON 134.7 307.2	CTAF 122.9
--	---------------------------------------	----------------------



NE-3, 31 MAY 2012 to 28 JUN 2012

NE-3, 31 MAY 2012 to 28 JUN 2012

ELEV 351	THRE 351
----------	----------



	3000	STPBY	SHLBE	3000
CATEGORY	A	B	C	D
LNAV MDA	1360-3	1009 (1100-3)	NA	
CIRCLING	1360-3	1009 (1100-3)	NA	

APP CRS	Rwy Idg	2558
085°	THRE	350
	Apt Elev	351

RNAV (GPS) RWY 8

BUMPASS/ LAKE ANNA (7W4)

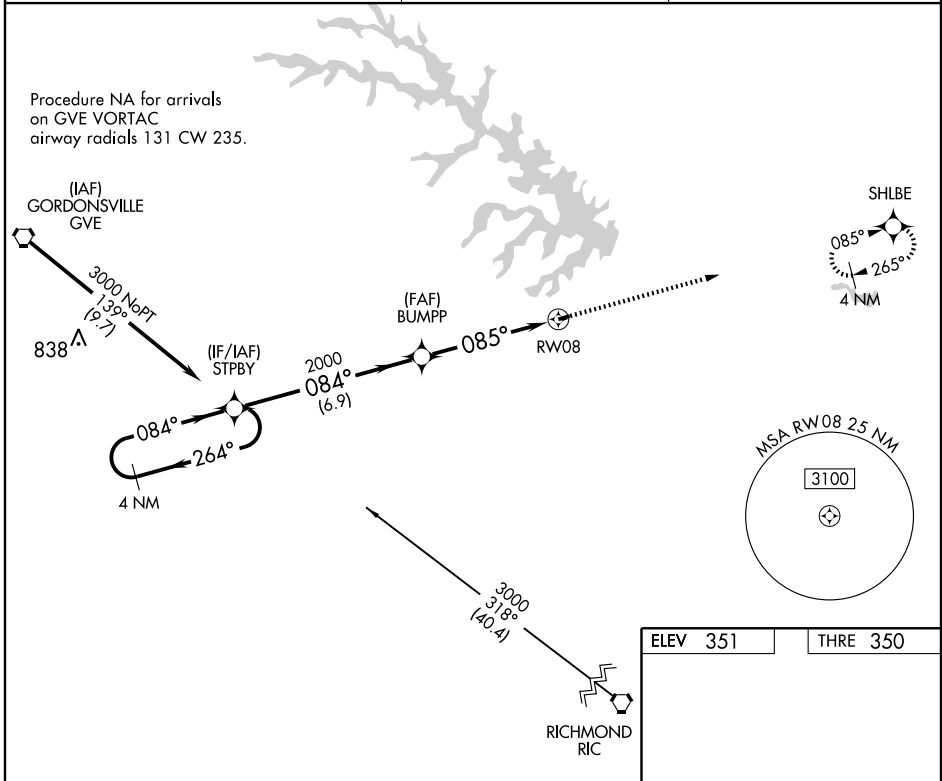
NA DME/DME RNP-0.3 NA. Procedure NA at night.
 Visibility reduction by helicopters NA.
 Use Louisa County/Freeman Field altimeter setting;
 when not received, procedure NA.

MISSED APPROACH: Climb to 3000
 direct SHLBE and hold.

LOUISA COUNTY/FREEMAN FIELD AWOS-3
119.475

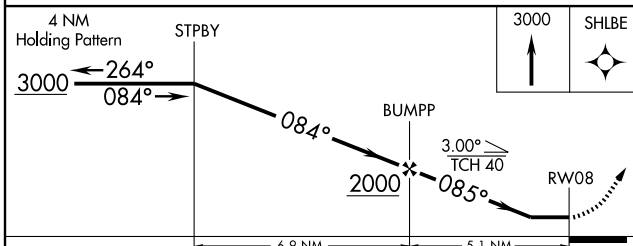
POTOMAC APP CON
134.7 307.2

CTAF
122.9



NE-3, 31 MAY 2012 to 28 JUN 2012

NE-3, 31 MAY 2012 to 28 JUN 2012



ELEV 351	THRE 350
----------	----------

MIRL Rwy 8-26

CATEGORY	A	B	C	D
LNAV MDA	1360-3	1010 (1100-3)	NA	
CIRCLING	1360-3	1009 (1100-3)	NA	