

WAAS CH 90526 W21A	APP CRS 207°	Rwy Idg THRE Apt Elev	5000 537 537
--	------------------------	-----------------------------	---

RNAV (GPS) RWY 21

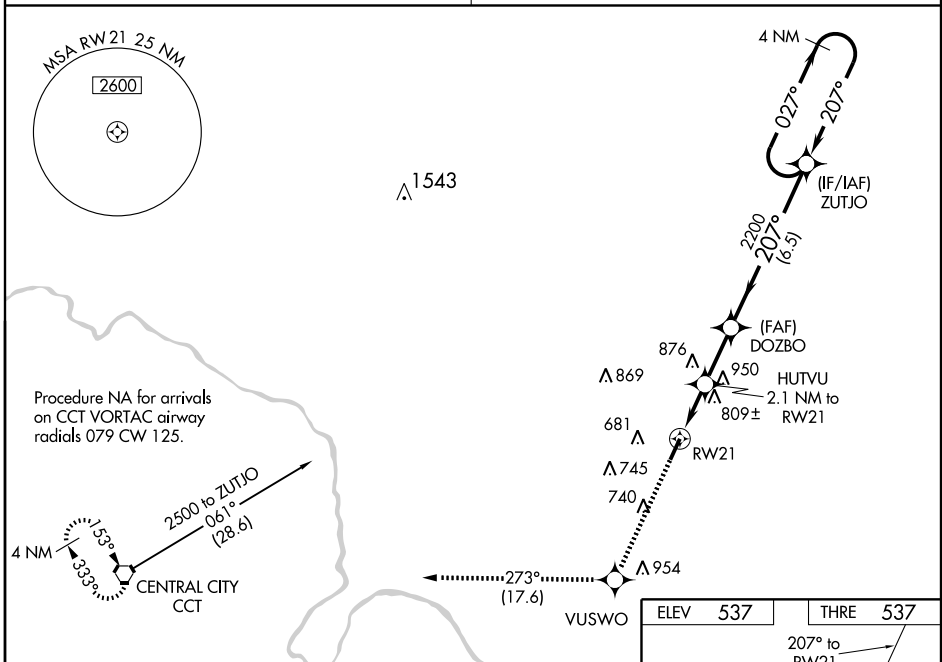
HARTFORD / OHIO COUNTY (7K4)

⚠ Baro-VNAV NA when using Owensboro altimeter setting. For uncompensated Baro-VNAV systems, LNAV/VNAV NA below -16°C (4°F) or above 40°C (104°F). DME/DME RNP-0.3 NA. Visibility reduction by helicopters NA. VDP NA with Owensboro altimeter setting. Obtain local altimeter setting on CTAF; when not received, use Owensboro altimeter setting and increase all DA 71 feet, all MDA 80 feet, increase LPV Cats A and B visibility ¼ mile and Cat C visibility ½ mile, LNAV/VNAV all Cats visibility ¼ mile, LNAV Cat C and Circling Cat C visibility ¼ mile.

MISSED APPROACH:
Climb to 3000 direct VUSWO and on track 273° to CCT VORTAC and hold.

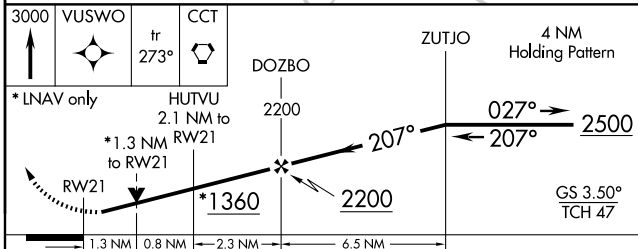
EVANSVILLE APP CON ★
126.4 226.4

UNICOM
122.8 (CTAF) 0



SE-1, 31 MAY 2012 to 28 JUN 2012

SE-1, 31 MAY 2012 to 28 JUN 2012



ELEV	537	THRE	537
207° to RW21		12	
3000 FT		3	

MIRL Rwy 3-21 0
REIL Rws 3 and 21

CATEGORY	A	B	C	D
LPV DA	787-¾ 250 (300-¾)		807-⅞ 270 (300-⅞)	NA
LNAV/VNAV DA	1011-1⅜ 474 (500-1⅜)			NA
LNAV MDA	1060-1 523 (600-1)		1060-1½ 523 (600-1½)	NA
CIRCLING	1060-1 523 (600-1)		1080-1½ 543 (600-1½)	NA

WAAS CH 45926 W03A	APP CRS 027°	Rwy Idg THRE Apt Elev	5000 530 537
--	------------------------	-----------------------------	---

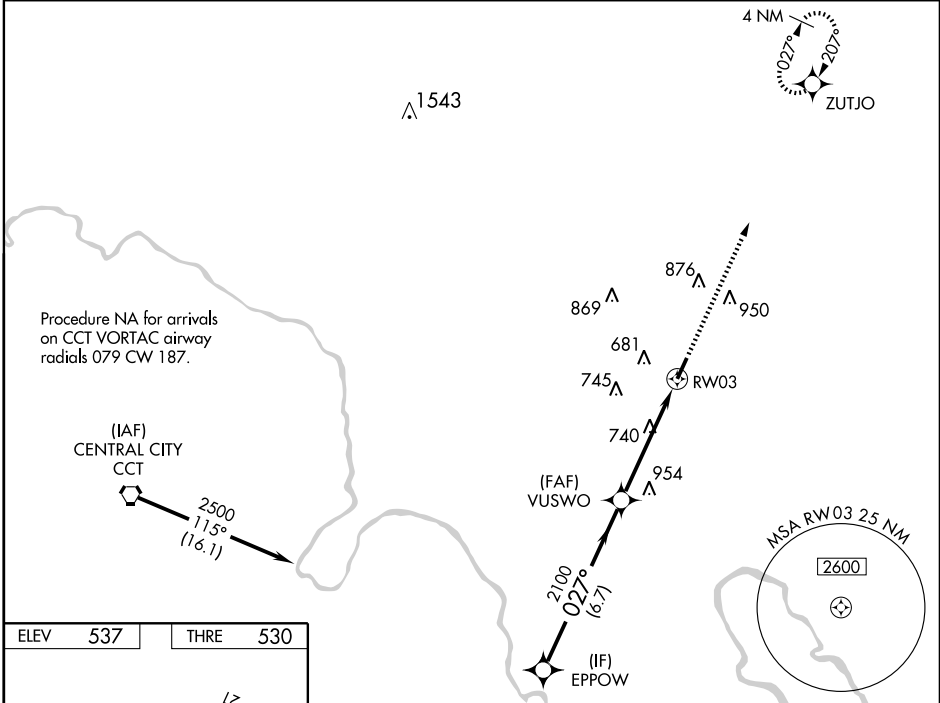
RNAV (GPS) RWY 3

HARTFORD / OHIO COUNTY (7K4)

⚠ Baro-VNAV NA when using Owensboro altimeter setting. For uncompensated Baro-VNAV systems, LNAV/VNAV NA below -16°C (4°F) or above 54°C (130°F). Obtain local altimeter setting on CTAF; when not received, use Owensboro altimeter setting and increase all DA 71 feet, all MDA 80 feet, LPV and LNAV/VNAV all Cats visibility ¼ mile, LNAV Cats C visibility ⅜ and Circling Cat C visibility ¼ mile. DME/DME RNP-0.3 NA. VDP NA with Owensboro altimeter setting.

MISSED APPROACH:
Climb to 2500 direct ZUTJO and hold.

EVANSVILLE APP CON *	UNICOM
126.4 226.4	122.8 (CTAF) 0



SE-1, 31 MAY 2012 to 28 JUN 2012

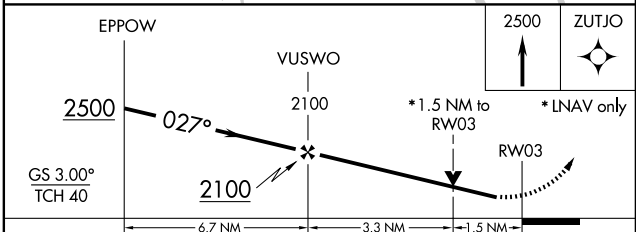
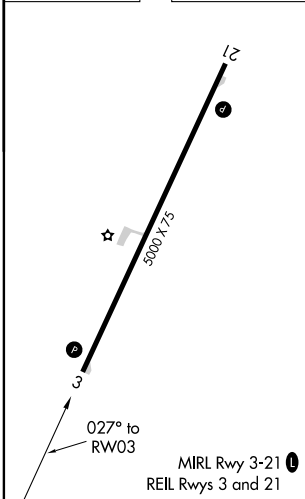
SE-1, 31 MAY 2012 to 28 JUN 2012

Procedure NA for arrivals on CCT VORTAC airway radials 079 CW 187.

(IAF) CENTRAL CITY CCT

2500
115°
(16.1)

ELEV 537	THRE 530
----------	----------



CATEGORY	A	B	C	D
LPV DA	780-7/8	250 (300-7/8)		NA
LNAV/VNAV DA	780-7/8	250 (300-7/8)		NA
LNAV MDA	1040-1	510 (600-1)	1040-1 3/8 510 (600-1 3/8)	NA
CIRCLING	1040-1 503 (600-1)	1060-1 523 (600-1)	1080-1 1/2 543 (600-1 1/2)	NA

HARTFORD, KENTUCKY

AL-9266 (FAA)

VOR/DME-A

HARTFORD / OHIO COUNTY (7K4)

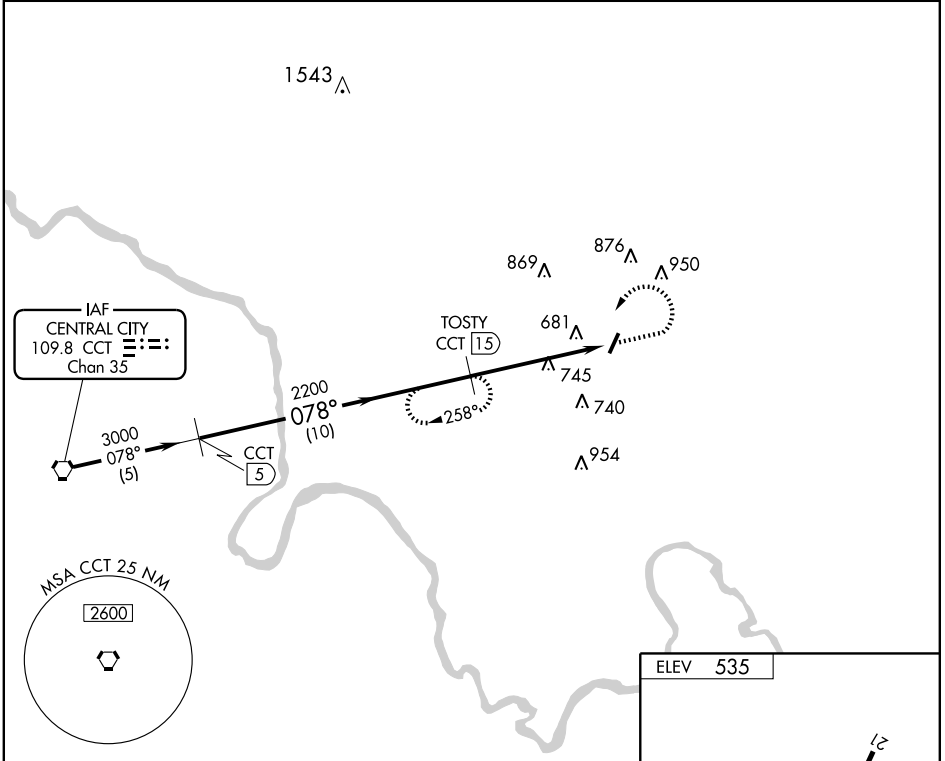
VORTAC CCT 109.8 Chan 35	APP CRS 078°	Rwy Idg TDZE Apt Elev N/A N/A 535
---------------------------------------	------------------------	---

▼ Obtain local altimeter setting on CTAF; if not received, use Bowling Green altimeter setting.
▲ NA

MISSED APPROACH: Climb to 1500 then climbing left turn to 3000 via heading 215° and CCT R-078 to TOSTY/15 DME and hold.

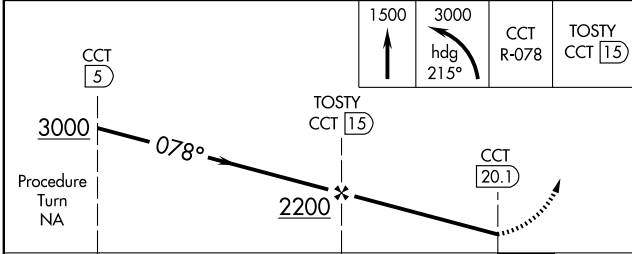
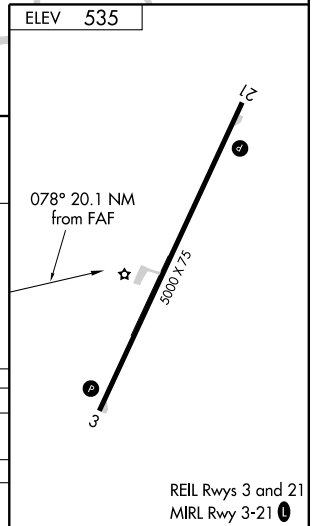
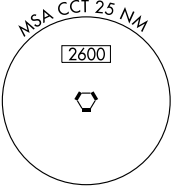
EVANSVILLE APP CON *
126.4 226.4

UNICOM
122.8 (CTAF) 0



SE-1, 31 MAY 2012 to 28 JUN 2012

SE-1, 31 MAY 2012 to 28 JUN 2012



CATEGORY	A	B	C	D
CIRCLING	1060-1 525 (600-1)	1060-1¼ 525 (600-1¼)		NA
BOWLING GREEN ALTIMETER SETTING MINIMUMS				
CIRCLING	1140-1 605 (700-1)	1140-1¼ 605 (700-1¼)		NA

HARTFORD, KENTUCKY
Orig 12096

37°28'N-86°51'W

HARTFORD / OHIO COUNTY (7K4)
VOR/DME-A

REIL Rwys 3 and 21
MIRL Rwy 3-21 0