

WAAS Ch 82022 W28A	APP CRS 282°	Rwy Idg THRE Apt Elev	4206 663 665
--	------------------------	-----------------------------	---

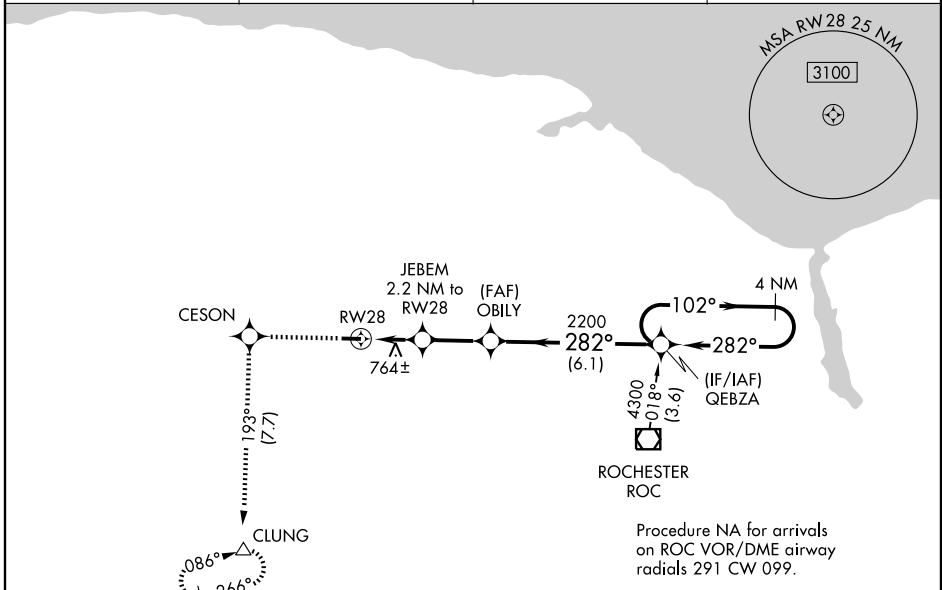
RNAV (GPS) RWY 28

BROCKPORT / LEDGEDALE AIRPARK (7G4)

When VGSI inop, Circling Rwy 10 NA at night. Baro-VNAV NA. Use Rochester altimeter setting; when not received, use Buffalo Niagara Intl altimeter setting and increase all DA 57 feet, all MDA 60 feet, LPV and LNAV/VNAV all Cats visibility 1/8 mile. When VGSI inop, Straight-in/Circling Rwy 28 Procedure NA at night. DME/DME RNP-0.3 NA. Visibility reduction by helicopters NA.

MISSED APPROACH: Climb to 3500 direct CESON and on track 193° to CLUNG and hold, continue climb-in-hold to 3500.

ROCHESTER ASOS 124.825	ROCHESTER APP CON 123.7 322.3	CTAF 122.7	UNICOM 122.7
----------------------------------	---	----------------------	------------------------



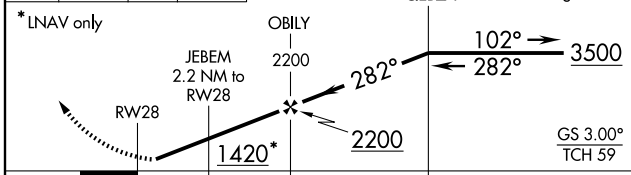
Procedure NA for arrivals on ROC VOR/DME airway radials 291 CW 099.

NE-2, 31 MAY 2012 to 28 JUN 2012

NE-2, 31 MAY 2012 to 28 JUN 2012

A 1409			
---------------	--	--	--

3500	CESON	tr 193°	CLUNG	VGSI and RNAV glidepath not coincident (VGSI Angle 4.00/TCH 20).
------	-------	---------	-------	--



CATEGORY	A	B	C	D
LPV DA	954-1	291 (300-1)		NA
LNAV/VNAV DA	954-1	291 (300-1)		NA
LNAV MDA	1060-1	397 (400-1)		NA
CIRCLING	1160-1	495 (500-1)		NA

ELEV 665	THRE 663
----------	----------