

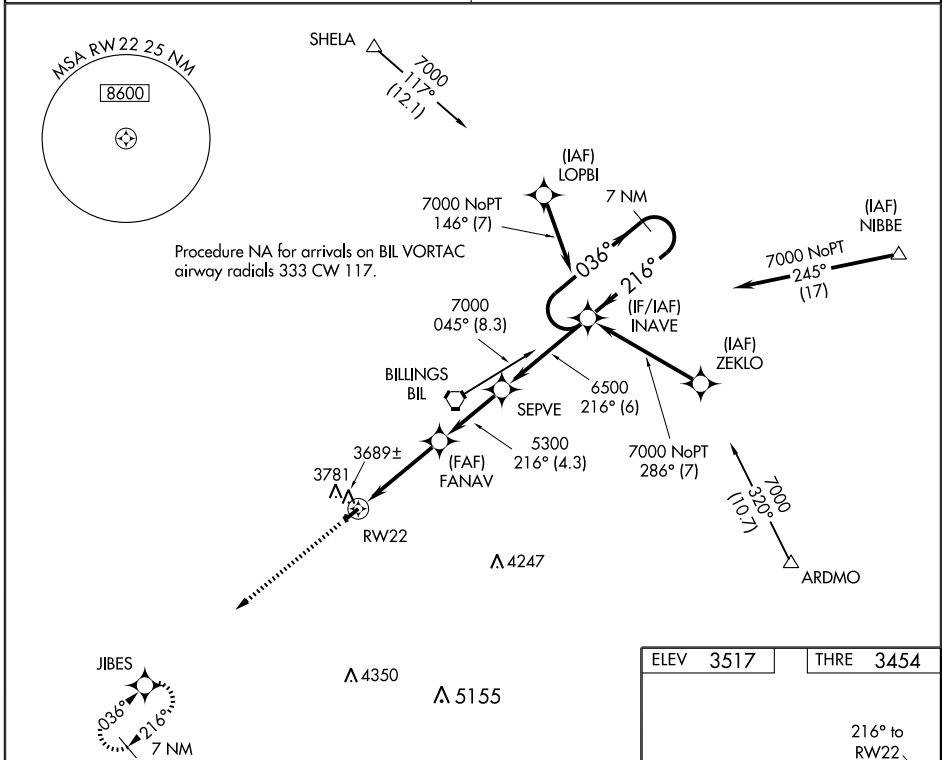
WAAS CH 86822 W22A	APP CRS 216°	Rwy Idg THRE Apt Elev	5200 3454 3517
--	------------------------	-----------------------------	---

RNAV (GPS) RWY 22

LAUREL MUNI (6S8)

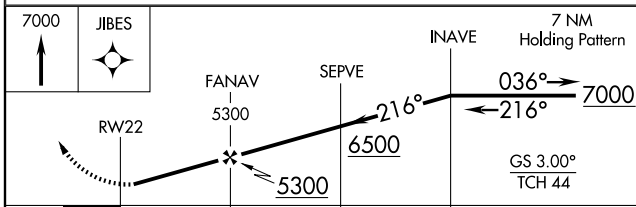
Baro-VNAV NA. When VGSi inoperative, Straight-in/Circling Rwy 22 procedure NA at night. DME/DME RNP-0.3 NA. Visibility reduction by helicopters NA.
MISSED APPROACH: Climb to 7000 direct JIBES and hold. Continue climb-in-hold to 7000.

BILLINGS APP CON 119.2 120.5 284.6	UNICOM 123.05 (CTAF)
--	--------------------------------



NW-1, 31 MAY 2012 to 28 JUN 2012

NW-1, 31 MAY 2012 to 28 JUN 2012



CATEGORY	A	B	C	D
LPV DA	3749-1		295 (300-1)	
LNAV/VNAV DA	3947-1½		493 (500-1½)	
LNAV MDA	4000-1	546 (500-1)	4000-1½	546 (500-1½)
CIRCLING	4200-1	683 (700-1)	4200-2	4220-2¼ 703 (800-2¼)

ELEV	3517	THRE	3454
------	------	------	------

MIRL Rwy 4-22

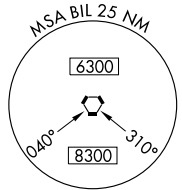
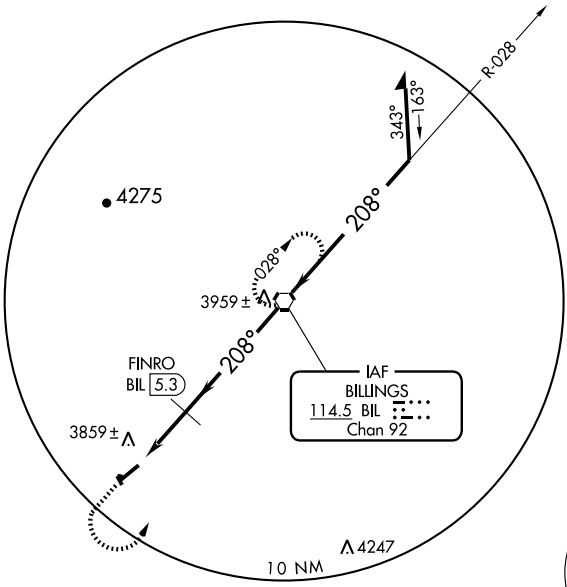
VOR RWY 22

LAUREL MUNI (6S8)

VORTAC BIL	APP CRS	Rwy Idg	5200
114.5	208°	TDZE	3472
Chan 92		Apt Elev	3517

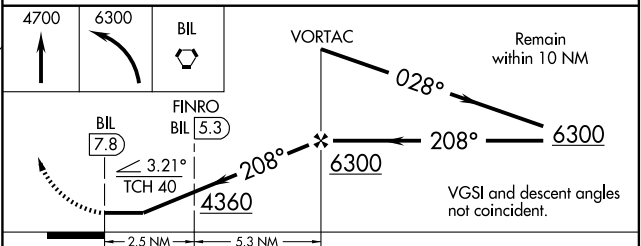
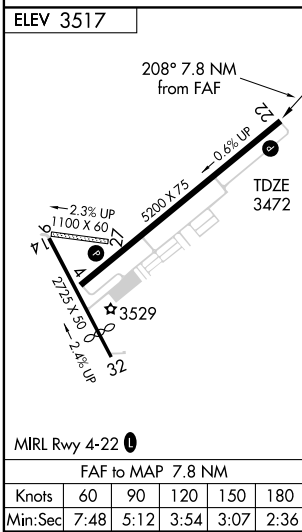
NA Use Billings altimeter setting. MISSED APPROACH: Climb to 4700 then climbing left turn to 6300 direct BIL VORTAC and hold.

BILLINGS APP CON **119.2 120.5 284.6** UNICOM **123.05 (CTAF)**



NW-1, 31 MAY 2012 to 28 JUN 2012

NW-1, 31 MAY 2012 to 28 JUN 2012



CATEGORY	A	B	C	D
S-22	4360-1¼ 888 (900-1¼)		4360-2¾ 888 (900-2¾)	4360-3 888 (900-3)
CIRCLING	4360-1¼ 843 (900-1¼)		4360-2¾ 843 (900-2¾)	4360-3 843 (900-3)
FINRO FIX MINIMUMS				
S-22	4160-1 688 (700-1)		4160-2 688 (700-2)	4160-2½ 688 (700-2½)
CIRCLING	4220-1 703 (800-1)		4220-2 703 (800-2)	4340-2¾ 823 (900-2¾)