

WAAS CH 86822 W22A	APP CRS 216°	Rwy Idg THRE Apt Elev	5200 3454 3517
--	------------------------	-----------------------------	---

RNAV (GPS) RWY 22

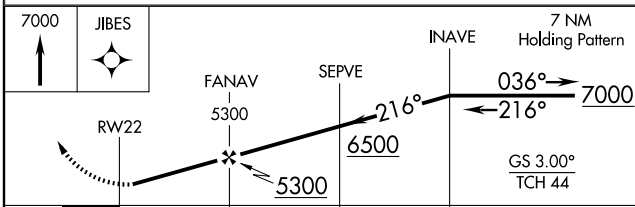
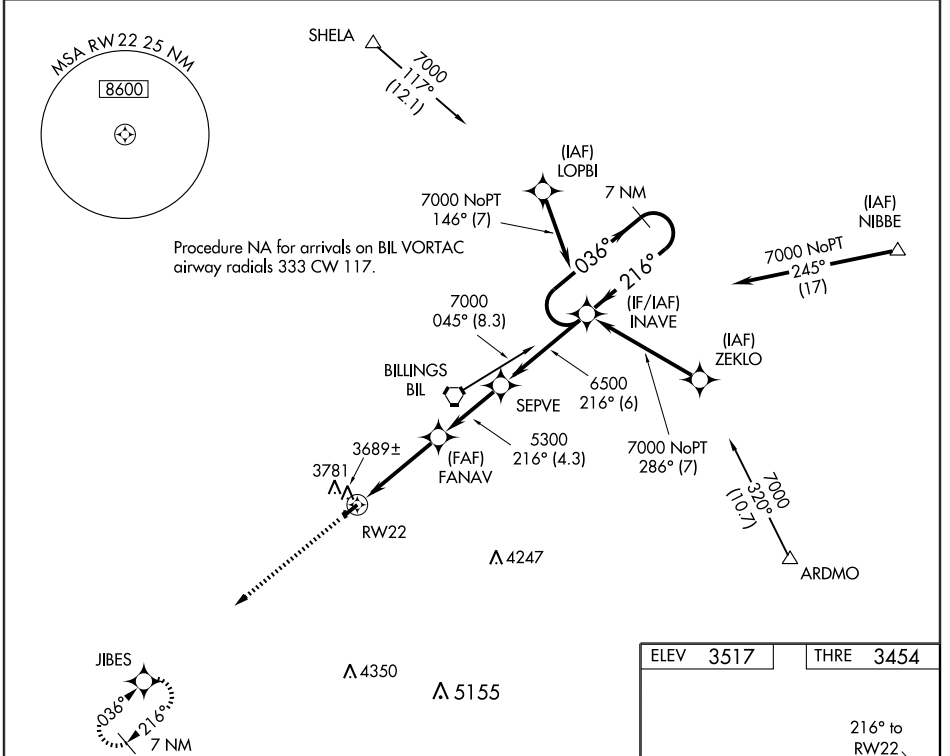
LAUREL MUNI (6S8)

Baro-VNAV NA. When VGSI inoperative, Straight-in/Circling Rwy 22 procedure NA at night. DME/DME RNP-0.3 NA. Visibility reduction by helicopters NA.

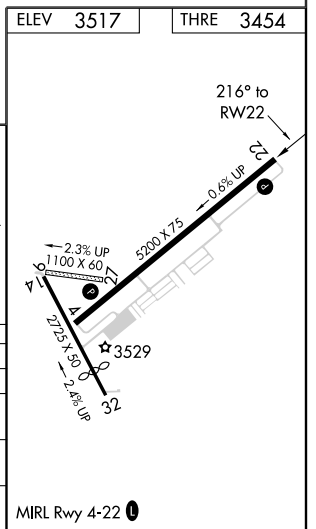
MISSED APPROACH: Climb to 7000 direct JIBES and hold. Continue climb-in-hold to 7000.

NA Use Billings altimeter setting; when not received, procedure NA.

BILLINGS APP CON 119.2 120.5 284.6	UNICOM 123.05 (CTAF)
--	--------------------------------



CATEGORY	A	B	C	D
LPV DA	3749-1		295 (300-1)	
LNAV/VNAV DA	3947-1½		493 (500-1½)	
LNAV MDA	4000-1	546 (500-1)	4000-1½	546 (500-1½)
CIRCLING	4200-1	683 (700-1)	4200-2	4220-2¼ 703 (800-2¼)



NW-1, 31 MAY 2012 to 28 JUN 2012

NW-1, 31 MAY 2012 to 28 JUN 2012

WAAS CH 70422 W04A	APP CRS 036°	Rwy Idg 5200 THRE 3488 Apt Elev 3517
--	------------------------	---

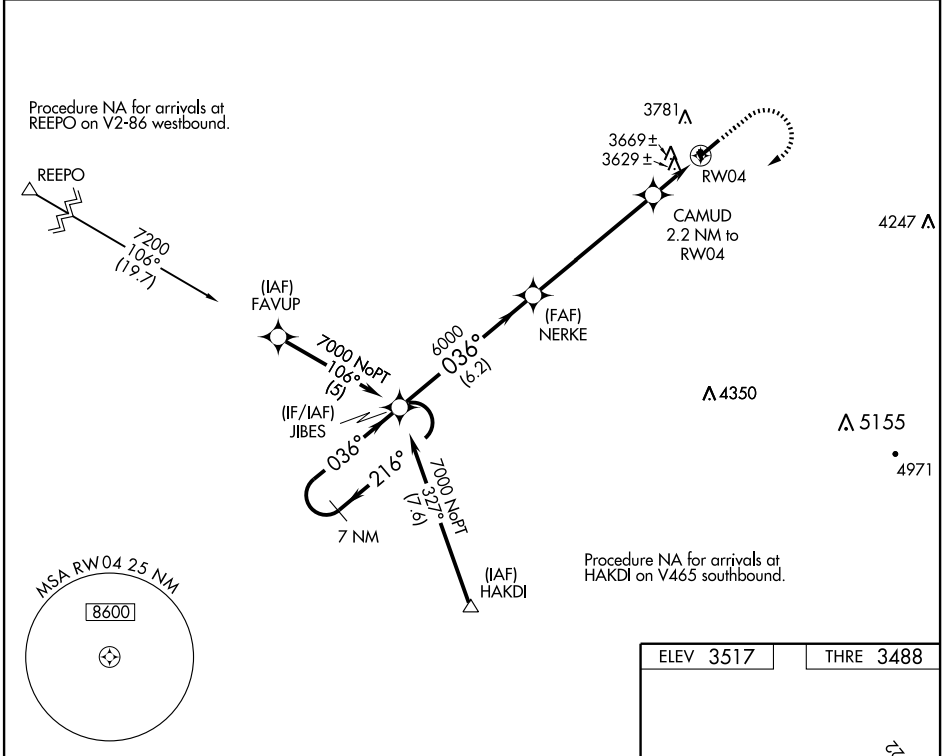
RNAV (GPS) RWY 4

LAUREL MUNI (6S8)

Baro-VNAV NA. Use Billings altimeter setting; when not received, procedure NA.
When VGSI inoperative, procedure NA at night. DME/DME RNP-0.3 NA.

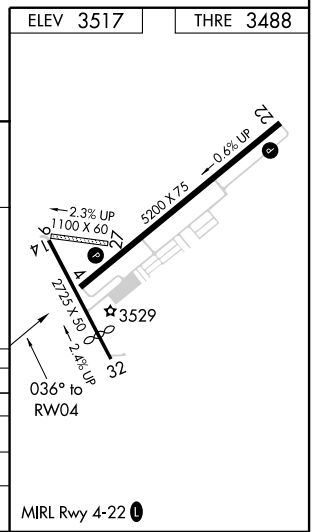
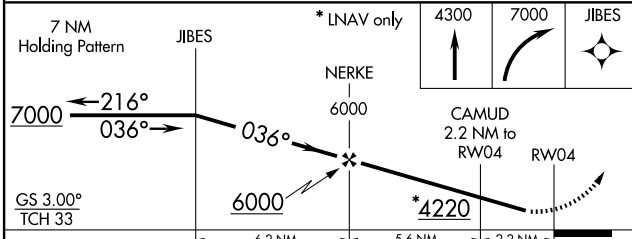
MISSED APPROACH: Climb to 4300 then climbing right turn to 7000 direct JIBES and hold.

BILLINGS APP CON 119.2 120.5 284.6	UNICOM 123.05 (CTAF)
--	--------------------------------



NW-1, 31 MAY 2012 to 28 JUN 2012

NW-1, 31 MAY 2012 to 28 JUN 2012



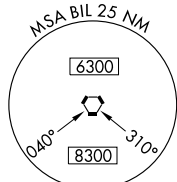
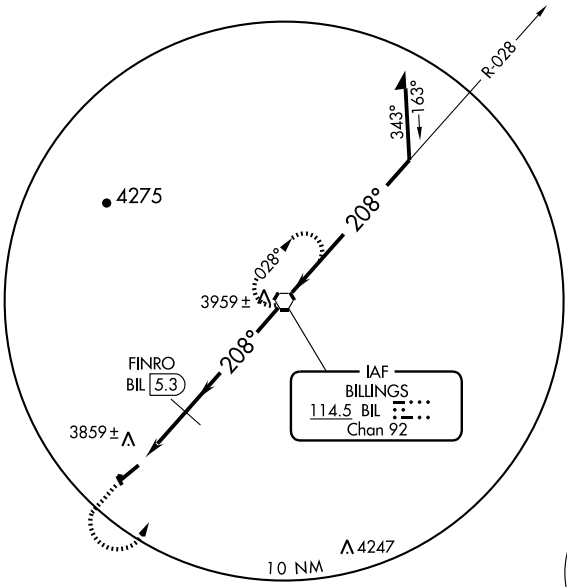
CATEGORY	A	B	C	D
LPV DA		3783-1	295 (300-1)	
LNAV/MDA VNAV		3981-1¾	493 (500-1¾)	
LNAV MDA	3980-1	492 (500-1)	3980-1½	492 (500-1½)
CIRCLING	4200-1	683 (700-1)	4200-2 683 (700-2)	4220-2¼ 703 (800-2¼)

VOR RWY 22

LAUREL MUNI (6S8)

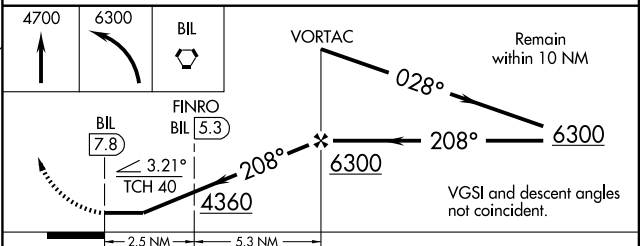
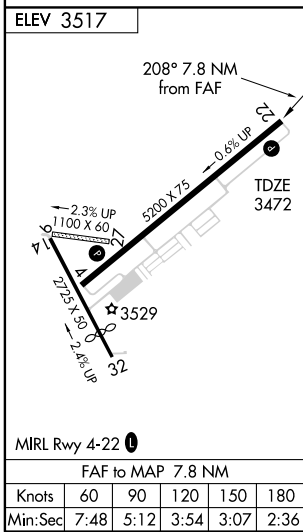
VORTAC BIL 114.5 Chan 92	APP CRS 208°	Rwy Idg TDZE Apt Elev	5200 3472 3517
---------------------------------------	------------------------	-----------------------------	---

NA	Use Billings altimeter setting.	MISSED APPROACH: Climb to 4700 then climbing left turn to 6300 direct BIL VORTAC and hold.
BILLINGS APP CON 119.2 120.5 284.6		UNICOM 123.05 (CTAF) 0



NW-1, 31 MAY 2012 to 28 JUN 2012

NW-1, 31 MAY 2012 to 28 JUN 2012



CATEGORY	A	B	C	D
S-22	4360-1¼ 888 (900-1¼)		4360-2¾ 888 (900-2¾)	4360-3 888 (900-3)
CIRCLING	4360-1¼ 843 (900-1¼)		4360-2¾ 843 (900-2¾)	4360-3 843 (900-3)
FINRO FIX MINIMUMS				
S-22	4160-1 688 (700-1)		4160-2 688 (700-2)	4160-2½ 688 (700-2½)
CIRCLING	4220-1 703 (800-1)		4220-2 703 (800-2)	4340-2¾ 823 (900-2¾)

TAKE-OFF MINIMUMS AND (OBSTACLE) DEPARTURE PROCEDURES

12152

INSTRUMENT APPROACH PROCEDURE CHARTS

IFR TAKE-OFF MINIMUMS AND (OBSTACLE) DEPARTURE PROCEDURES

Civil Airports and Selected Military Airports

ALL USERS: Airports that have Departure Procedures (DPs) designed specifically to assist pilots in avoiding obstacles during the climb to the minimum enroute altitude, and/or airports that have civil IFR take-off minimums other than standard, are listed below. Take-off Minimums and Departure Procedures apply to all runways unless otherwise specified. Altitudes, unless otherwise indicated, are minimum altitudes in MSL.

DPs specifically designed for obstacle avoidance are referred to as Obstacle Departure Procedures (ODPs) and are described below in text, or published separately as a graphic procedure. If the (Obstacle) DP is published as a graphic procedure, its name will be listed below, and it can be found in either this volume (civil), or the applicable military volume, as appropriate. Users will recognize graphic obstacle DPs by the term "(OBSTACLE)" included in the procedure title; e.g., TETON TWO (OBSTACLE). If not specifically assigned a departure procedure (i.e., ODP, SID, or radar vector) as part of an IFR clearance, an ODP may be required to be flown for obstacle clearance, even though not specifically stated in the IFR clearance. When doing so in this manner, ATC should be informed when the ODP being used contains a specified route to be flown, restrictions before turning, and/or altitude restrictions.

Graphic DPs designed by ATC to standardize traffic flows, ensure aircraft separation and enhance capacity are referred to as "Standard Instrument Departures (SIDs)". SIDs also provide obstacle clearance and are published under the appropriate airport section. ATC clearance must be received prior to flying a SID.

CIVIL USERS NOTE: Title 14 Code of Federal Regulations Part 91 prescribes standard take-off rules and establishes take-off minimums for certain operators as follows: (1) Aircraft having two engines or less - one statute mile. (2) Aircraft having more than two engines - one-half statute mile. These standard minima apply in the absence of any different minima listed below.

MILITARY USERS NOTE: Civil (nonstandard) take-off minima are published below. For military take-off minima, refer to appropriate service directives.

NAME	TAKE-OFF MINIMUMS
------	-------------------

AFTON, WY

AFTON MUNI

DEPARTURE PROCEDURE: **Rwy 16**, Use LUNDI
DEPARTURE. **Rwy 34**, use AFTON DEPARTURE.

ALBANY, OR

ALBANY MUNI (S12)

AMDT 2A 11237 (FAA)

DEPARTURE PROCEDURE: **Rwy 16**, turn right.
Rwy 34, turn left.

All aircraft climb direct CVO VOR/DME and continue climb in CVO VOR/DME holding pattern, (East, right turns, 261° inbound) to cross CVO VOR/DME at or above 3400.

NOTE: **Rwy 34**, light poles 860' from DER, 69' right of centerline, 40' AGL/262' MSL. Light poles 906' from DER, 15' left of centerline, 41' AGL/262' MSL.

NAME	TAKE-OFF MINIMUMS
------	-------------------

ANACONDA, MT

BOWMAN FIELD

TAKE-OFF MINIMUMS: **Rwy 4**, std. w/ min. climb of 417' per NM to 9000, or 2800-3 for climb in visual conditions. **Rwy 17**, std. w/ min. climb of 321' per NM to 10200, or 2800-3 for climb in visual conditions. **Rwy 22**, NA-obstacles. **Rwy 35**, std. w/ min. climb of 369' per NM to 9100, or 2800-3 for climb in visual conditions.

DEPARTURE PROCEDURE: **Rwys 4, 35**, climbing right turn to 10200 via heading 130° and CPN VOR/DME R-340 to CPN VOR/DME, continue climb-in-hold to 10200 (north, left turn, 166° inbound), or for climb in visual conditions, cross Bowman Field Airport at or above 7700 then proceed via CPN R-309 to CPN VOR/DME, continue climb-in-hold to 10200 (north, left turn, 166° inbound). **Rwy 17**, climbing left turn to 10200 via heading 100° and CPN VOR/DME R-335 to CPN VOR/DME, continue climb-in-hold to 10200 (north, left turn, 166° inbound), or for climb in visual conditions, cross Bowman Field Airport at or above 7700 then proceed via CPN R-309 to CPN VOR/DME, continue climb-in-hold to 10200 (north, left turn, 166° inbound).

NOTE: **Rwy 17**, multiple trees beginning 865' from departure end of runway, 243' left of centerline, up to 70' AGL/5097' MSL. Rod on hangar 570' from departure end of runway, 278' left of centerline, 54' AGL/5054' MSL. Multiple trees beginning 787' from departure end of runway, 165' right of centerline, up to 70' AGL/5098' MSL. Multiple transmission lines beginning 4602' from departure end of runway, 1664' right of centerline, 80' AGL/5159' MSL. **Rwy 35**, multiple transmission lines beginning 2242' from departure end of runway, 964' left of centerline, up to 80' AGL/5159' MSL.

12152

TAKE-OFF MINIMUMS AND (OBSTACLE) DEPARTURE PROCEDURES

TAKE-OFF MINIMUMS AND (OBSTACLE) DEPARTURE PROCEDURES

12152

ARCO, ID

ARCO-BUTTE COUNTY (AOC)

AMDT 1 08157 (FAA)

TAKE-OFF MINIMUMS: **Rwy 6**, NA - Obstacles.

DEPARTURE PROCEDURE: Use JATTS

DEPARTURE.

ARLINGTON, WA

ARLINGTON MUNI (AWO)

AMDT 3 11237 (FAA)

TAKE-OFF MINIMUMS: **Rwy 11**, std. w/min. climb of 400' per NM to 1000, or 1200-2½ for climb in visual conditions. **Rwy 16**, std. w/min. climb of 300' per NM to 1500, or 1200-2½ for climb in visual conditions. **Rwy 29**, std. w/min. climb of 245' per NM to 1400, or 1200-2½ for climb in visual conditions. **Rwy 34**, std. w/min. climb of 260' per NM to 800, or 1200-2½ for climb in visual conditions.

DEPARTURE PROCEDURE: **Rwy 11**, climbing right turn direct WATON LOM, or for climb in visual conditions, cross Arlington Muni at or above 1200 then proceed on 161° course to WATON LOM, thence...

Rwy 16, climb direct WATON LOM, or for climb in visual conditions, cross Arlington Muni at or above 1200 then proceed on 161° course to WATON LOM, thence... **Rwy 29**, climbing left turn on 113° course to WATON LOM, or for climb in visual conditions, cross Arlington Muni at or above 1200 then proceed on 161° course to WATON LOM, thence... **Rwy 34**, climbing left turn on 134° course to WATON LOM, or for climb in visual conditions, cross Arlington Muni at or above 1200 then proceed on 161° course to WATON LOM, thence...

... Aircraft departing WATON LOM on bearings 150° CW 340° from WATON LOM climb on course. Aircraft departing WATON LOM on bearings 340° CW 150° from WATON LOM, climb in holding pattern (South, left turns, 342° inbound) to cross WATON LOM at or above 4500 before proceeding on course.

NOTE: **Rwy 11**, airport beacon 1116' from DER, 699' left of centerline, 58' AGL/186' MSL. Tree 1443' from DER, 803' left of centerline, 108' AGL/236' MSL. Tree 1819' from DER, 688' right of centerline, 46' AGL/174' MSL. Trees beginning 1.2 NM from DER, left and right of centerline, up to 127' AGL/486' MSL. **Rwy 16**, tree 1240' from DER, 723' left of centerline, 47' AGL/174' MSL. Trees beginning 1289' from DER, 713' right of centerline, up to 87' AGL/214' MSL. **Rwy 29**, trees beginning 897' from DER, 548' right of centerline, up to 97' AGL/229' MSL. **Rwy 34**, trees beginning 1557' from DER, left and right of centerline, up to 96' AGL/236' MSL. Trees beginning 2379' from DER, 196' right of centerline, up to 84' AGL/224' MSL.

ASTORIA, OR

ASTORIA RGNL

TAKE-OFF MINIMUMS: **Rwy 8**, 800-3 or std. with a min. climb of 320' per NM to 900. **Rwy 13**, 700-2 or std. with a min. climb of 350' per NM to 800.

DEPARTURE PROCEDURE: **Rwys 8, 31**, turn left.

Rwy 13, climb runway heading to 800 then climbing right turn. **Rwy 26**, turn right. Aircraft departing northwestbound climb via AST R-290 on course.

All other aircraft climb to 1500 or above via AST R-290 then left turn to AST VOR/DME and continue climbing on course.

12152

TAKE-OFF MINIMUMS AND (OBSTACLE) DEPARTURE PROCEDURES

AUBURN, WA

AUBURN MUNI

DEPARTURE PROCEDURE: Use AUBURN DEPARTURE.

AURORA, OR

AURORA STATE (UAO)

AMDT 3 11349 (FAA)

TAKE-OFF MINIMUMS: **Rwy 17**, std. w/min. climb of 292' per NM to 2100 or 1500-2½ for climb in visual conditions. **Rwy 35**, std. w/min. climb of 312' per NM to 2100 or 1500-2½ for climb in visual conditions.

DEPARTURE PROCEDURE: **Rwy 17**, climbing right turn, thence ... Or for climb in visual conditions cross Aurora State airport at or above 1500 thence... **Rwy 35**, climbing left turn, thence ... Or for climb in visual conditions cross Aurora State airport at or above 1500 thence...

... Aircraft departing on V23 intercept BTG R-175 and climb on course. All others proceed direct UBG VOR/DME and Hold (hold South, left turns, 003° inbound) continue climb in hold to cross UBG VOR/DME at or above MEA for direction of flight before proceeding on course.

NOTE: **Rwy 17**, trees beginning 31' from DER, 246' right of centerline, up to 87' AGL/316' MSL. Tree 2270' from DER, 836' left of centerline, 87' AGL/303' MSL. Vehicle on road 254' from DER, 349' left of centerline, 16' AGL/209' MSL. **Rwy 35**, trees beginning 30' from DER, 163' left of centerline, up to 65' AGL/329' MSL. Vehicle on road 212' from DER, 390' left of centerline, 16' AGL/212' MSL. Trees 973' from DER, 281' right of centerline, up to 65' AGL/253' MSL.

BAKER, MT

BAKER MUNI

NOTE: **Rwy 13**, 51' derrick 2200' from departure end of runway on centerline. 100' trees south of airport, near runway, various locations. **Rwy 31**, 146' antenna on tower 4000' from departure end of runway, 1800' left of centerline. 114' rod on OL antenna 3800' from departure end of runway on centerline.

31 MAY 2012 to 28 JUN 2012

31 MAY 2012 to 28 JUN 2012

BAKER CITY, OR

BAKER CITY MUNI (BKE)

AMDT 2 10322 (FAA)

TAKE-OFF MINIMUMS: **Rwy 8**, std. w/ min climb of 460' per NM to 6900, or 3700-3 for climb in visual conditions. **Rwy 13**, std. w/ min climb of 470' per NM to 6900, or 3700-3 for climb in visual conditions. **Rwy 17**, N/A-Environmental. **Rwy 26**, std. w/ min climb of 400' per NM to 7200, or 3700-3 for climb in visual conditions. **Rwys 31, 35**, std. w/ min climb of 400' per NM to 6900, or 3700-3 for climb in visual conditions.

DEPARTURE PROCEDURE: **Rwy 8**, climb heading 081° to 6900, then climbing left turn to BKE VOR/DME R-066 to BKE VOR/DME and hold, continue climb in BKE VOR/DME holding pattern (Hold S, right turns, 338° inbound) to cross BKE VOR/DME at or above MEA/MCA for route of flight, or for climb in visual conditions, cross BKE VOR/DME at or above 6900, then climb-in-hold to at or above MEA/MCA for route of flight. **Rwy 13**, climb heading 126° to 6900, then climbing left turn to BKE VOR/DME R-095 to BKE VOR/DME and hold, continue climb in BKE VOR/DME holding pattern (Hold S, right turns, 338° inbound) to cross BKE VOR/DME at or above MEA/MCA for route of flight, or for climb in visual conditions, cross BKE VOR/DME at or above 6900, then climb-in-hold to at or above MEA/MCA for route of flight. **Rwy 26**, climbing right turn on heading 330° and BKE VOR/DME R-297 to 7200, then right turn to intercept BKE VOR/DME R-297 to BKE VOR/DME and hold, continue climb in BKE VOR/DME holding pattern (Hold S, right turns, 338° inbound) to cross BKE VOR/DME at or above MEA/MCA for route of flight, or for climb in visual conditions, cross BKE VOR/DME at or above 6900, then climb-in-hold to at or above MEA/MCA for route of flight. **Rwy 31**, climb heading 306° to 6900, then climbing right turn to BKE VOR/DME R-322 to BKE VOR/DME and hold, continue climb in BKE VOR/DME holding pattern (Hold S, right turns, 338° inbound) to cross BKE VOR/DME at or above MEA/MCA for route of flight, or for climb in visual conditions, cross BKE VOR/DME at or above 6900, then climb-in-hold to at or above MEA/MCA for route of flight. **Rwy 35**, climb heading 345° to 6900, then climbing right turn to BKE VOR/DME R-351 to BKE VOR/DME and hold, continue climb in BKE VOR/DME holding pattern (Hold S, right turns, 338° inbound) to cross BKE VOR/DME at or above MEA/MCA for route of flight, or for climb in visual conditions, cross BKE VOR/DME at or above 6900, then climb-in-hold to at or above MEA/MCA for route of flight.

NOTE: **Rwy 8**, vehicles on roadway 321' from DER, on centerline, 11' AGL/3380' MSL. Trees beginning 2.5 NM from DER, 200' left of centerline, up to 100' AGL/3812' MSL. Trees beginning 2.9 NM from DER, 2464' left of centerline. Up to 100' AGL/4270' MSL. **Rwy 13**, trees beginning 2019' from DER, 969' right of centerline, up to 100' AGL/3469' MSL. Bushes beginning 2.2 NM from DER, 4092' left of centerline, up to 3' AGL/3837' MSL. Trees beginning 2.2 NM from DER, 4027' left of centerline, up to 100' AGL/3919' MSL.

BAKER CITY, OR (CON'T)

BAKER CITY MUNI (BKE) (CON'T)

NOTE: **Rwy 26**, bushes 231' from DER, 55' left of centerline, up to 12' AGL/3381' MSL. Bushes 241' from DER, 147' right of centerline, up to 15' AGL/3384' MSL. Vehicles on roadway 393' from DER, on centerline, up to 18' AGL/3384' MSL. Pole 1276' from DER, 530' left of centerline, 35' AGL/3404' MSL. Trees beginning 2547' from DER, 742' left of centerline, up to 100' AGL/3469' MSL. Trees beginning 2617' from DER, 108' right of centerline, up to 100' AGL/3441' MSL. **Rwy 31**, trees beginning 74' from DER, 49' left of centerline, up to 100' AGL/3424' MSL. Sign 489' from DER, 389' left of centerline, 25' AGL/3391' MSL. Vehicles on roadway 499' from DER, 302' left of centerline, up to 21' AGL/3387' MSL. Trees beginning 1107' from DER, 757' left of centerline, up to 100' AGL/3469' MSL. **Rwy 35**, trees beginning 5.9 NM from DER, 724' right of centerline, up to 100' AGL/4779' MSL.

BELLINGHAM, WA

BELLINGHAM INTL

DEPARTURE PROCEDURE: **Rwy 16**, climb heading 160° to 600, then climbing right turn direct HUH VORTAC. Do not exceed 210 KIAS until established northbound. **Rwy 34**, climb heading 340° to 600, then climbing left turn to intercept HUH R-145 to HUH VORTAC, continue climb in holding pattern (northwest, right turn, 149° inbound) to MEA as appropriate for direction of flight.

NOTE: **Rwy 16**, lighted windsock 9' from departure end of runway, 259' right of centerline, 16' AGL/181' MSL. Multiple trees beginning 747' from departure end of runway, 405' right of centerline, up to 68' AGL/213' MSL. Multiple trees beginning 1128' from departure end of runway, 57' left of centerline, up to 104' AGL/249' MSL. **Rwy 34**, lighted windsock 93' from departure end of runway, 516' right of centerline, 27' AGL/169' MSL. Multiple trees beginning 1372' from departure end of runway, 619' right of centerline, up to 134' AGL/246' MSL.

BEND, OR

BEND MUNI (BDN)

AMDT 4 09183 (FAA)

DEPARTURE PROCEDURE: Use BEND DEPARTURE.

BIG PINEY, WY

MILEY MEMORIAL FIELD

TAKE-OFF MINIMUMS: **Rwys 8, 26**, NA. DEPARTURE PROCEDURE: **Rwy 13**, climb to 8400 via BPI R-124. **Rwy 31**, climb to 10800 via BPI R-320 thence all aircraft climb on course.

31 MAY 2012 to 28 JUN 2012

31 MAY 2012 to 28 JUN 2012

TAKE-OFF MINIMUMS AND (OBSTACLE) DEPARTURE PROCEDURES

12152

BILLINGS, MT

BILLINGS LOGAN INTL (BIL)

AMDT 6 12096 (FAA)

DEPARTURE PROCEDURE: **Rwy 10L**, Climb to 4600 on heading 098 before turning right.

NOTE: **Rwy 7**, sign and ground beginning 7' from DER, 55' right of centerline, up to 10' AGL/3544' MSL. **Rwy 10L**, ground beginning 20' from DER, 426' right of centerline, up to 3523' MSL. Tree 949' from DER, 673' right of centerline, 100' AGL/3619' MSL. Vehicles on road beginning 622' from DER, 560' right of centerline, 17' AGL/3541' MSL. Fence 464' from DER, 534' right of centerline, 11' AGL/3511' MSL. **Rwy 10R**, numerous vertical structures beginning 165' from DER, 363' right of centerline, up to 24' AGL/3620' MSL. Two antennas beginning 170' from DER, 266' right of centerline, up to 30' AGL/3646' MSL. Ground 18' from DER, 15' right of centerline, 3608' MSL. Two buildings beginning 170' from DER, 429' right of centerline, up to 89' AGL/3695' MSL. Building 520' from DER, 561' right of centerline antenna 2397' from DER, 332' left of centerline, 101' AGL/3707' MSL. **Rwy 25**, numerous poles, vertical structure, ground and fence beginning 13' from centerline, 184' left of centerline, 37' AGL/3673' MSL. Ground beginning 50' from DER, 363' right of centerline, up to 3642' MSL. **Rwy 28L**, ground and building beginning 22' from DER, 367' left of centerline, up to 92' AGL/3743' MSL. **Rwy 28R**, tree 474' from DER, 200' right of centerline, 100' AGL/3679' MSL.

BLACKFOOT, ID

MCCARLEY FIELD (U02)

AMDT 1 11069 (FAA)

DEPARTURE PROCEDURE: **Rwy 1**, climb to 7000 direct IDA VOR/DME, before proceeding on course.

Rwy 19, climb to 7000 direct PIH VORTAC, before proceeding on course.

NOTE: **Rwy 1**, vehicles on road beginning at DER 190' right of centerline, 17' AGL/4517' MSL. **Rwy 19**, vehicles on road beginning at DER 250' left of centerline, 17' AGL/4507' MSL.

BOISE, ID

BOISE AIR TERMINAL / GOWEN FIELD (BOI)

AMDT 6 10042 (FAA)

DEPARTURE PROCEDURE: Use GOWEN DEPARTURE.

BONNERS FERRY, ID

BOUNDARY COUNTY (65S)

ORIG 10210 (FAA)

TAKE-OFF MINIMUMS: **Rwy 2**, NA-Terrain.

DEPARTURE PROCEDURE: **Rwy 20**, use KARPS (RNAV) DEPARTURE.

BOZEMAN, MT

BOZEMAN YELLOWSTONE INTL (BZN)

AMDT 4 11181 (FAA)

TAKE-OFF MINIMUMS: **Rwys 3,21**, NA-ATC.

DEPARTURE PROCEDURE: **Rwys 12,30**, use BOZEMAN DEPARTURE.

BREMERTON, WA

BREMERTON NATIONAL (PWT)

AMDT 3 08045 (FAA)

TAKE-OFF MINIMUMS: **Rwy 1**, 300-1 or std. w/min. climb of 410' per NM to 700.

DEPARTURE PROCEDURE: **Rwy 1**, Climbing right turn to 6000 direct CAN NDB, Thence...**Rwy 19**, Climb to 6000 direct CAN NDB, thence...

...Continue climb-in-hold (S, LT, 013° inbound) to 6000 before proceeding on course.

NOTES: **Rwy 1**, Multiple bushes 380' from departure end of runway, 522' left of centerline, up to 17' AGL/456' MSL, multiple trees and poles beginning 1210' from departure end of runway, 622' left of centerline, up to 100' AGL/561' MSL, multiple trees and bushes 1012' from departure end of runway, 708' right of centerline, up to 100' AGL/495' MSL. **Rwy 19**, Multiple trees beginning 176' from departure end of runway, 337' left of centerline, up to 100' AGL/514' MSL, multiple trees beginning 371' from departure end of runway, 277' right of centerline, up to 100' AGL/548' MSL.

BUFFALO, WY

JOHNSON COUNTY

TAKE-OFF MINIMUMS: Northbound aircraft:

Rwys 13,31, 2400-2 or std. with a min. climb of 300' per NM to 7500. Southbound aircraft: **Rwy 31**, 400-2 or std. with a min climb of 300' per NM to 6000.

DEPARTURE PROCEDURE: Northbound aircraft:

Rwy 13, turn left. **Rwy 31**, climb straight ahead.

All aircraft proceed via SHR R-139 to SHR VOR/DME.

Southbound aircraft: **Rwy 13**, climb straight ahead.

Rwy 31, turn right. **All aircraft** proceed via CZI R-319 to CZI VOR/DME.

31 MAY 2012 to 28 JUN 2012

31 MAY 2012 to 28 JUN 2012

12152

TAKE-OFF MINIMUMS AND (OBSTACLE) DEPARTURE PROCEDURES

BURLEY, ID

BURLEY MUNI (BYI)

AMDT 5 10042 (FAA)

TAKE-OFF MINIMUMS: **Rwy 24**, 300-1½ or std. w/ min. climb of 428' per NM to 4500.

DEPARTURE PROCEDURE: **Rwy 2**, climbing left turn direct BYI VOR/DME, continue climb in BYI VOR/DME holding pattern (hold Northwest right turns, 125° inbound) to cross BYI VOR/DME at or above MEA for route of flight. **Rwy 6**, climbing left turn direct BYI VOR/DME, continue climb in BYI VOR/DME holding pattern (hold Northwest right turns, 125° inbound) to cross BYI VOR/DME at or above MEA for route of flight. **Rwy 20**, climbing right turn direct BYI VOR/DME, continue climb in BYI VOR/DME holding pattern (hold Northwest right turns, 125° inbound) to cross BYI VOR/DME at or above MEA for route of flight. **Rwy 24**, climbing right turn direct BYI VOR/DME, continue climb in BYI VOR/DME holding pattern (hold Northwest right turns, 125° inbound) to cross BYI VOR/DME at or above MEA for route of flight.

NOTE: **Rwy 2**, obstruction light on bridge 252' from DER, 513' left of centerline, 57' AGL/4195' MSL. Trees beginning 686' from DER, 201' right of centerline, up to 35' AGL/4184' MSL. Tree 694' from DER, 375' left of centerline, 29' AGL/4178' MSL. Obstruction light on building 736' from DER, 188' left of centerline, 11' AGL/4161' MSL. Tower 803' from DER, 590' left of centerline, 55' AGL/4204' MSL. Vehicles on road beginning 857' from DER, 1' right of centerline, up to 17' AGL/4168' MSL. Poles beginning 1226' from DER, 549' left of centerline, up to 72' AGL/4222' MSL. Building vent 1240' from DER, 164' left of centerline, 27' AGL/4177' MSL. Stack 2206' from DER, 856' right of centerline, 86' AGL/4236' MSL. Stack 2573' from DER, 614' left of centerline, 86' AGL/4236' MSL. Elevators beginning 3980' from DER, 131' right of centerline, up to 133' AGL/4283' MSL. **Rwy 6**, trees beginning 46' from DER, 172' right of centerline, up to 14' AGL/4163' MSL. Rising terrain beginning 49' from DER, 326' right of centerline, up to 4149' MSL. Bush 150' from DER, 103' right of centerline, 5' AGL/4147' MSL. Antenna 586' from DER, 398' left of centerline, 15' AGL/4165' MSL. Obstruction light on bridge 1061' from DER, 80' right of centerline, 39' AGL/4179' MSL. **Rwy 20**, obstruction light pole 42' from DER, 124' left of centerline, 16' AGL/4170' MSL. Railroad beginning 65' from DER, 4' left of centerline, up to 23' AGL/4177' MSL. Sign 181' from DER, 121' right of centerline, 18' AGL/4172' MSL. Vehicles on road 162' from DER, 2' left of centerline, 17' AGL/4169' MSL. Vehicles on road beginning 335' from DER 348' right of centerline up to 17' AGL/4171' MSL. Pole 446' from DER, 210' right of centerline, 26' AGL/4180' MSL. Antenna 523' from DER, 337' right of centerline, 63' AGL/4217' MSL. Tree 586' from DER, 213' right of centerline, 28' AGL/4182' MSL. Trees beginning 2014' from DER, 339' left of centerline, up to 96' AGL/4251' MSL.

BURLEY, ID (CON'T)

BURLEY MUNI (BYI) (CON'T)

Rwy 24, vehicles on road beginning 25' from DER, 9' left of centerline, up to 15' AGL/4169' MSL. Fence 58' from DER, 8' left of centerline, 4' AGL/4154' MSL. Rising terrain beginning 69' from DER, 201' right of centerline, up to 4154' MSL. Railroad 152' from DER, 6' left of centerline, 23' AGL/4176' MSL. Trees beginning 427' from DER, 101' right of centerline, up to 69' AGL/4223' MSL. Vehicles on road beginning 509' from DER, 586' right of centerline, up to 15' AGL/4169' MSL. Railroad beginning 568' from DER, 288' right of centerline, up to 23' AGL/4177' MSL. Pole 735' from DER, 185' left of centerline, 18' AGL/4172' MSL. Light standard 824' from DER, 58' right of centerline, 23' AGL/4177' MSL. Antenna 1630' from DER, 112' left of centerline, 58' AGL/4212' MSL. Tower 2766' from DER, 175' left of centerline, 123' AGL/4282' MSL. Tower 3570' from DER, 158' right of centerline, 157' AGL/4312' MSL. Obstruction light on elevators beginning 3115' from DER, 164' left of centerline, up to 184' AGL/4344' MSL.

BURLINGTON/MOUNT VERNON, WA

SKAGIT RGNL (BVS)

AMDT 1 11097 (FAA)

TAKE-OFF MINIMUMS: **Rwy 4**, 200-¾ w/ min. climb of 260' per NM to 2500 or std. w/ min. climb of 370' per NM to 2500 or 7400-3 for climb in visual conditions.

Rwy 22, std. w/ min. climb of 240' per NM to 1900 or 7400-3 for climb in visual conditions.

DEPARTURE PROCEDURE: **Rwy 4**, climbing right turn heading 280° to 2000, thence ... or climb in visual conditions to cross Skagit RGNL Airport at or above 7400. **Rwy 10**, climbing right turn heading 280° to 2000, thence ... **Rwy 22**, climbing right turn heading 280° to 2000, thence ... or climb in visual conditions to cross Skagit RGNL Airport at or above 7400. **Rwy 28**, climb heading 289° to 2100, thence ...

... climbing right turn direct BVS NDB. Aircraft departing on BVS NDB R-121 CW R-355 climb on course. All others continue climbing in BVS NDB holding pattern (West, right turns, 112° inbound) to cross BVS NDB at or above 7400 before proceeding on course.

NOTE: **Rwy 4**, bush 125' from DER, 429' right of centerline, 20' AGL/101' MSL. Pole 1489' from DER, 136' left of centerline, 37' AGL/137' MSL. Trees beginning 2580' from DER, 426' left of centerline, up to 130' AGL/269' MSL. **Rwy 10**, fence 122' from DER, 351' left of centerline, 12' AGL/105' MSL. Trees beginning 607' from DER, 661' right of centerline, up to 150' AGL/200' MSL. Trees beginning 1766' from DER, 394' left of centerline, up to 130' AGL/239' MSL. **Rwy 22**, trees beginning 105' from DER, 194' right of centerline, up to 130' AGL/213' MSL. Trees beginning 1594' from DER, 389' left of centerline, up to 130' AGL/199' MSL. **Rwy 28**, trees beginning 19' from DER, 214' right of centerline, up to 130' AGL/262' MSL. Trees beginning 108' from DER, 493' left of centerline, up to 70' AGL/203' MSL.

31 MAY 2012 to 28 JUN 2012

31 MAY 2012 to 28 JUN 2012

TAKE-OFF MINIMUMS AND (OBSTACLE) DEPARTURE PROCEDURES

12152

BURNS, OR

BURNS MUNI

DEPARTURE PROCEDURE: **Rwy 3**, climbing right turn, thence... **Rwy 12**, climb to 4600 via heading 117°, thence... **Rwys 21, 30**, climbing left turn, thence...
...All aircraft departing on ILR R-072 CW R-209, climb on course. All others climb on ILR R-123 within 10 NM to cross ILR VOR/DME at or above 5000.

NOTE: **Rwy 21**, pole 820' from departure end of runway, 357' left of centerline, 20' AGL/4169' MSL.

BUTTE, MT

BERT MOONEY

TAKE-OFF MINIMUMS: **Rwy 11**, NA-obstacles. **Rwy 15**, std. w/ min. climb of 601' per NM to 7300, or 3300-3 for climb in visual conditions. **Rwy 29**, std. w/ min. climb of 832' per NM to 6700, or 3300-3 for climb in visual conditions. **Rwy 33**, std. w/ min. climb of 355' per NM to 6800, or 3300-3 for climb in visual conditions.

DEPARTURE PROCEDURE: **Rwy 15**, climbing right turn direct CPN VOR/DME, or for climb in visual conditions: Cross Bert Mooney Airport westbound at or above 8800 then proceed direct CPN VOR/DME, thence... **Rwy 29**, climb heading 293° to intercept CPN VOR/DME R-082 to CPN VOR/DME, or for climb in visual conditions: Cross Bert Mooney Airport westbound at or above 8800 then proceed direct CPN VOR/DME, thence... **Rwy 33**, climb direct CPN VOR/DME, or for climb in visual conditions: Cross Bert Mooney Airport westbound at or above 8800 then proceed direct CPN VOR/DME, thence...

... climb in CPN VOR/DME holding pattern (hold north, left turn, 166° inbound) to cross CPN VOR/DME at or above MEA before proceeding enroute.

NOTE: **Rwy 15**, multiple trees beginning 2 NM from departure end of runway, 1779' right of centerline, up to 100' AGL/6659' MSL. Tree 2.1 NM from departure end of runway, 66' left of centerline, 100' AGL/5934' MSL.

Rwy 29, multiple trees and poles beginning 364' from departure end of runway, 7' right of centerline, up to 100' AGL/5621' MSL. Multiple trees and lights beginning 322' left of centerline, up to 100' AGL/5582' MSL.

Terrain and numerous trees beginning 1.2 NM from departure end of runway, 1022' left of centerline, up to 100' AGL/6379' MSL. **Rwy 33**, flag pole 1095' from departure end of runway, 730' left of centerline, 64' AGL/5583' MSL.

CALDWELL, ID

CALDWELL INDUSTRIAL

TAKE-OFF MINIMUMS: **Rwy 12**, std. with a min. climb of 300' per NM to 5600, or 2400-3 for climb in visual conditions.

DEPARTURE PROCEDURE: **Rwy 12**, climb via heading 119° to 5600 before proceeding on course. For climb in visual conditions: Cross Caldwell Industrial Airport at or above 4800 before proceeding on course. **Rwy 30**, climb via heading 299° to 4400 before proceeding on course.

NOTE: **Rwy 12**, levee 198' from departure end of runway, 281' left of centerline, 0' AGL/2451' MSL. Multiple trees 1462' from departure end of runway, 877' right of centerline, up to 100' AGL/2505' MSL. **Rwy 30**, multiple poles 206' from departure end of runway, 389' right of centerline, up to 39' AGL/2457' MSL. Rod 353' from departure end of runway, 246' right of centerline, 21' AGL/2439' MSL.

CASPER, WY

CASPER/NATRONA COUNTY INTL (CPR)

AMDT 3A 09155 (FAA)

DEPARTURE PROCEDURE: **Rwys 3, 8, 12**, turn left.

All other runways, turn right. All aircraft climb direct DDY VOR/DME before proceeding on course, or comply with published Casper SIDs.

CHEHALIS, WA

CHEHALIS-CENTRALIA

DEPARTURE PROCEDURE: **Rwy 16**, climb to 1000 via heading 160° then climbing left turn to 4000 via heading 001° and OLM R-151 to OLM VORTAC before proceeding on course. **Rwy 34**, climb to 4000 via heading 340° and OLM R-176 to OLM VORTAC before proceeding on course.

CHEYENNE, WY

CHEYENNE RGNL/JERRY OLSON FIELD

NOTE: **Rwy 13**, multiple trees beginning 74' from departure end of runway, 115' left of centerline, up to 40' AGL/6166' MSL. Multiple trees, pole, and fence beginning 34' from departure end of runway, 167' right of centerline, up to 40' AGL/6154' MSL. **Rwy 27**, multiple trees and poles beginning 525' from departure end of runway, 271' left of centerline, up to 40' AGL/6216' MSL. Multiple trees and poles beginning 1222' from departure end of runway, 275' right of centerline, up to 40' AGL/6211' MSL. **Rwy 31**, multiple trees, road, fence and sign beginning 196' from departure end of runway, 76' left of centerline, up to 40' AGL/6238' MSL. Multiple poles and sign beginning 407' from departure end of runway, 8' left of centerline, up to 69' AGL/6229' MSL.

CHOTEAU, MT

CHOTEAU (CI)

AMDT 1 10322 (FAA)

TAKE-OFF MINIMUMS: **Rwy 5**, std. w/ min. climb of 280' per NM to 11600 or 2900-3 for climb in visual conditions.

Rwy 14, std. w/ min. climb of 280' per NM to 11500 or 2900-3 for climb in visual conditions. **Rwys 23, 32**, std. w/ min. climb of 310' per NM to 11800 or 2900-3 for climb in visual conditions.

DEPARTURE PROCEDURE: **Rwys 5, 14, 23, 32**, for climb in visual conditions cross Choteau Airport at or above 6700 before proceeding on course.

NOTE: **Rwy 5**, vehicle on road 86' from DER, 154' left of centerline, 15' AGL/3954' MSL. **Rwy 14**, aircraft on twy 10' from DER, 436' right of centerline, 10' AGL/3951' MSL. Tree 1959' from DER, 624' left of centerline, 100' AGL/4059' MSL. **Rwy 23**, vehicle on road, 8' from DER, 179' right of centerline, 15' AGL/3954' MSL. Vehicle on road, 11' from DER, 236' left of centerline, 15' AGL/3954' MSL.

31 MAY 2012 to 28 JUN 2012

31 MAY 2012 to 28 JUN 2012

12152

TAKE-OFF MINIMUMS AND (OBSTACLE) DEPARTURE PROCEDURES

NW-1

CODY, WY

YELLOWSTONE RGNL (COD)
AMDT 4 10042 (FAA)

TAKE-OFF MINIMUMS: **Rwy 4**, std. with a min. climb of 400' per NM to 8000' or 4200-3 for climb in visual conditions. **Rwy 22**, std. with a min. climb of 385' per NM to 7400' or 4200-3 for climb in visual conditions. DEPARTURE PROCEDURE: **Rwy 4**, climb heading 038° to 5900, then climbing left turn via COD R-171 to COD VOR/DME or for climb in visual conditions to cross Yellowstone Rgnl at or above 9400, then via COD R-189 to COD VOR/DME to cross COD VOR/DME at or above MEA for route of flight. **Rwy 22**, climb heading 218° to 6600, then climbing left turn via COD R-180 to COD VOR/DME or for climb in visual conditions to cross Yellowstone Rgnl at or above 9400, then via COD R-189 to COD VOR/DME to cross COD VOR/DME at or above MEA for route of flight.

NOTE: **Rwy 4**, trees beginning 100' from DER, 262' right of centerline, up to 79' AGL/5199' MSL. Rising terrain beginning 1723' from DER, 304' right of centerline, up to 5146' MSL. **Rwy 22**, poles beginning 1 NM from DER, 406' right of centerline, up to 60' AGL/5332' MSL. Rising terrain beginning 1 NM from DER, 109' right of centerline, up to 6235' MSL. Rising terrain beginning 5074' from DER, 131' left of centerline, up to 5428' MSL.

COEUR D'ALENE, ID

COEUR D'ALENE-PAPPY BOYINGTON FIELD (COE)

AMDT 9 10042 (FAA)

DEPARTURE PROCEDURE: use COEUR D'ALENE DEPARTURE.

COLSTRIP, MT

COLSTRIP (M46)

AMDT 2 08157 (FAA)

TAKE-OFF MINIMUMS: **Rwy 6** use CISP (RNAV)
DEPARTURE. **Rwy 24**, use CONUK (RNAV)
DEPARTURE.

CONRAD, MT

CONRAD

DEPARTURE PROCEDURE: **Rwy 24**, climb runway heading to 4300, then continue climb on course.

CORVALLIS, OR

CORVALLIS MUNI

TAKE-OFF MINIMUMS: **Rwys 9, 17, 35**, std. with a min. climb of 290' per NM to 3100 or 1700-3 for climb in visual conditions. **Rwy 27**, std. with a min. climb of 310' per NM to 3100 or 1700-3 for climb in visual conditions. DEPARTURE PROCEDURE: **Rwys 9, 17**, climbing left turn direct CVO VOR/DME, thence...or, climb in visual conditions to cross CVO VOR/DME at or above 3400. **Rwys 27, 35**, climbing right turn direct CVO VOR/DME, thence...or, climb in visual conditions to cross CVO VOR/DME at or above 3400.

...climb in CVO VOR/DME holding pattern (E, RT, 261° inbound) to depart at or above 3400.

NOTE: **Rwy 9**, multiple trees and railroad beginning 549' from departure end of runway, 254' left of centerline, up to 153' AGL/383' MSL. Multiple trees and railroad beginning 670' from departure end of runway, 5' right of centerline, up to 135' AGL/380' MSL. **Rwy 27**, obstruction light on glideslope 409' from departure end of runway, 325' left of centerline, 28' AGL/273' MSL.

Rwy 35, multiple trees beginning 470' from departure end of runway, 544' left of centerline up to 36' AGL/276' MSL.

COWLEY/LOVELL/BYRON, WY

NORTH BIG HORN COUNTY

DEPARTURE PROCEDURE: **Rwys 9, 27**, aircraft departing via HCY NDB bearings 130° CW 225° climb on course, all others climb in HCY NDB holding pattern (W, right turns, 078° inbound) to cross HCY NDB at or above 9000.

DEER PARK, WA

DEER PARK (DEW)

AMDT 1 10098 (FAA)

TAKE-OFF MINIMUMS: **Rwy 34**, 300-1½ or std. with a min. climb of 455' per NM to 2500.

DEPARTURE PROCEDURE: **Rwy 4**, climbing right turn heading 165° and GEG VORTAC R-006 to GEG VORTAC. **Rwy 16**, climb heading 164° and GEG VORTAC R-006 to GEG VORTAC. **Rwy 22**, climbing left turn heading 155° and GEG VORTAC R-006 to GEG VORTAC. **Rwy 34**, climbing right turn heading 165° and GEG VORTAC R-006 to GEG VORTAC.

NOTE: **Rwy 4**, aircraft 261' from DER, 511' left of centerline, up to 21' AGL/2210' MSL. Trees beginning 1809' from DER, 413' left of centerline, up to 109' AGL/2299' MSL. Aircraft 104' from DER, 186' right of centerline, up to 21' AGL/2200' MSL. Trees beginning 1667' from DER, 373' right of centerline, up to 116' AGL/2319' MSL. **Rwy 16**, trees beginning 31' from DER, 455' left of centerline, up to 109' AGL/2279' MSL. Trees beginning 2587' from DER, 621' right of centerline, up to 104' AGL/2264' MSL. **Rwy 22**, trees beginning 1461' from DER, 211' right of centerline, up to 90' AGL/2270' MSL. **Rwy 34**, aircraft 23' from DER, 218' left of centerline, up to 21' AGL/2230' MSL. Trees beginning 2678' from DER, 18' left of centerline, up to 165' AGL/2375' MSL. Vehicles beginning 74' from DER, 339' right of centerline, up to 15' AGL/2234' MSL. Trees beginning 2219' from DER, 260' right of centerline, up to 100' AGL/2382' MSL.

31 MAY 2012 to 28 JUN 2012

31 MAY 2012 to 28 JUN 2012

TAKE-OFF MINIMUMS AND (OBSTACLE) DEPARTURE PROCEDURES

12152

DILLON, MT

DILLON

TAKE-OFF MINIMUMS: **Rwys 3,21**, NA.

DEPARTURE PROCEDURE: **Rwys 16,34**, turn right, climb in DLN VOR/DME holding pattern (N, right turns, 185° inbound) to cross DLN VOR/DME at or above; northwestbound V257 8500; southwestbound V121 8500; northbound V21 7600; southeastbound V21, V257 9400.

DOUGLAS, WY

CONVERSE COUNTY

TAKE-OFF MINIMUMS: **Rwy 5**, 300-2 or std. with a min. climb of 250' per NM to 5200. **Rwy 23**, 1700-3 or std. with a min. climb of 260' per NM to 7200.

DEPARTURE PROCEDURE: **Rwy 5**, climbing right turn via IIP VOR/DME R-342 to IIP VOR/DME. **Rwy 11**, climbing right turn via IIP VOR/DME R-312 to IIP VOR/DME. **Rwy 23**, climbing left turn via IIP VOR/DME R-264 to IIP VOR/DME. **Rwy 29**, climbing right turn via IIP VOR/DME R-325 to IIP VOR/DME. **All aircraft** departing IIP R-253 CW R-180 climb on course. All others continue climb in IIP VOR/DME holding pattern (NW, left turns, 125° inbound) to cross IIP VOR/DME at or above: R-181 CW R-199 9600; R-200 CW R-252 8000.

NOTE: **Rwy 5**, trees 1883' from departure end of runway, 549' right of centerline, 35' AGL/5014' MSL. Trees 3407' from departure end of runway, 209' right of centerline, 35' AGL/5074' MSL. Trees 5458' from departure end of runway, 1954' right of centerline, 35' AGL/5132' MSL. **Rwy 23**, trees 2068' from departure end of runway, 1008' left of centerline, 35' AGL/4994' MSL. Trees 3130' from departure end of runway, 1215' left of centerline, 35' AGL/5014' MSL.

DRIGGS, ID

DRIGGS-REED MEMORIAL (DIJ)

AMDT 3 11349 (FAA)

DEPARTURE PROCEDURE: **Rwys 3, 21**, use LAMON DEPARTURE.

EASTSOUND, WA

ORCAS ISLAND (ORS)

AMDT 1 09351 (FAA)

TAKE-OFF MINIMUMS: **Rwy 16**, NA-Terrain. **Rwy 34**, 500-3 or std. w/ min. climb of 224' per NM to 600.

DEPARTURE PROCEDURE: **Rwy 34**, climbing right turn to 2000 to intercept HUH VORTAC R-210 to HUH VORTAC, then climb-in-hold (hold South, Left turns, 352° inbound) to cross HUH VORTAC at or above 3800 before proceeding on course.

NOTE: **Rwy 34**, trees beginning 330' from DER, 411' left of centerline, up to 120' AGL/139' MSL.

ELLENSBURG, WA

BOWERS FIELD

TAKE-OFF MINIMUMS: **Rwys 7,11**, 4600-3 or std. with a min. climb of 290' per NM to 7800. **Rwy 25**, 4700-3 or std. with a min. climb of 340' per NM to 7800. **Rwy 29**, 4600-3 or std. with a min. climb of 320' per NM to 7800.

DEPARTURE PROCEDURE: **Rwys 7, 29**, climbing right turn direct ELN VORTAC. **Rwys 11, 25**, climbing left turn direct ELN VORTAC. **All aircraft**, continue climbing in the ELN VORTAC holding pattern (W, right turns, 087° inbound) to MEA/MOCA for route of flight.

12152

EPHRATA, WA

EPHRATA MUNI (EPH)

AMDT 3 09127 (FAA)

TAKE-OFF MINIMUMS: **Rwy 29**, NA-Obstacles.

DEPARTURE PROCEDURE: **Rwy 3**, climb heading 027° to 2300 before proceeding on course. **Rwy 11**, climb heading 112° to 2200 before proceeding on course. **Rwy 21**, climb heading 207° to 2800 before proceeding on course.

EUGENE, OR

MAHLON SWEET FIELD (EUG)

AMDT 7 10266 (FAA)

DEPARTURE PROCEDURE: **Rwys 16L, 16R**, climb heading 163° to 1000 then climbing right turn... **Rwys 34L, 34R**, climb heading 343° to 1000 then climbing left turn...

...all aircraft climb direct EUG VORTAC, then climb in hold in EUG VORTAC holding pattern (hold north, right turns, 175° inbound) to cross EUG VORTAC at or above MEA before proceeding on course.

NOTE: **Rwy 16L**, multiple power poles beginning 1036' from DER, 74' right of centerline, up to 35' AGL/408' MSL. Multiple power poles beginning 1017' from DER, 211' left of centerline, up to 31' AGL/404' MSL. **Rwy 16R**, tree 1991' from DER, 83' left of centerline, 54' AGL/419' MSL. Numerous trees beginning 1504' from DER, 489' right of centerline, up to 43' AGL/408' MSL. **Rwy 34L**, tree 1597' from DER, 842' left of centerline, 50' AGL/404' MSL. **Rwy 34R**, tree 2897' from DER, 606' right of centerline, 77' AGL/440' MSL. Tree 2535' from DER, 643' left of centerline, 65' AGL/428' MSL.

EVANSTON, WY

EVANSTON-UINTA COUNTY BURNS FIELD

DEPARTURE PROCEDURE: **Rwy 5**, climb via heading 050° and FBR VOR/DME R-243 to FBR VOR/DME.

Rwy 23, climbing left turn via heading 030° and FBR VOR/DME R-243 to FBR VOR/DME.

All aircraft: cross FBR VOR/DME at or above MEA for direction of flight.

31 MAY 2012 to 28 JUN 2012

31 MAY 2012 to 28 JUN 2012

TAKE-OFF MINIMUMS AND (OBSTACLE) DEPARTURE PROCEDURES

12152

EVERETT, WA

SNOHOMISH COUNTY (PAINE FIELD)

TAKE-OFF MINIMUMS: **Rwy 29**, std. with a min. climb of 353' per NM to 800.

DEPARTURE PROCEDURE: **Rwys 11, 16L/R**, climbing right turn, thence... **Rwys 29, 34L/R**, climbing left turn, thence...

...for aircraft departing via V287 west bound, climb via PAE VOR/DME R-236 to 3000. All others, climb direct PAE VOR/DME, climb in PAE VOR/DME holding pattern (NW, RT, 149° inbound) to MEA for route of flight before proceeding on course.

NOTE: **Rwy 11**, multiple antennas on building, rod on obstruction light, and trees beginning 326' from departure end of runway, 387' right of centerline, up to 85' AGL/664' MSL. Tree 1156' from departure end of runway, 600' left of centerline, 93' AGL/672' MSL. **Rwy 16L**, multiple trees and pole beginning 588' from departure end of runway, 220' left of centerline, up to 118' AGL/697' MSL. Multiple trees, pole, and building beginning 449' from departure end of runway, 162' right of centerline, up to 78' AGL/657' MSL. **Rwy 16R**, multiple trees beginning 1228' from departure end of runway, 168' left of centerline, up to 140' AGL/699' MSL. Multiple trees beginning 707' from departure end of runway, 158' right of centerline, up to 118' AGL/687' MSL. **Rwy 29**, multiple trees beginning 45' from departure end of runway, 66' left of centerline, up to 111' AGL/630' MSL. Multiple trees beginning 343' from departure end of runway, 44' right of centerline, up to 110' AGL/689' MSL. **Rwy 34R**, multiple trees and pole beginning 3340' from departure end of runway, 180' right of centerline, up to 95' AGL/674' MSL. Tree 5762' from departure end of runway, 221' left of centerline, 103' AGL/682' MSL.

FAIRCHILD AFB (KSKA)

SPOKANE, WA AMDT 1, 12124

DEPARTURE PROCEDURE: **Rwy 5**, Climb on track 051° to intercept SKA R-048 to 5300, then on course. **Rwy 23**, climb on track 244° to 3400, then on course.

TAKE-OFF OBSTACLES: **Rwy 23**, Potential Aircraft 65' AGL/2518' MSL, 98' from DER, 437' right of centerline. Terrain 2477' MSL, 493' to 511' from DER, 751' to 761' right of centerline. Terrain 2472' MSL, 1018' from DER, 621' right of centerline. Terrain 2467' MSL, 208' from DER, 405' right of centerline.

FORSYTH, MT

TILLITT FIELD (1S3)

ORIG 12040 (FAA)

NOTE: **Rwy 8**, light support structure 10' from DER, 27' right of centerline, 2' AGL/2729' MSL. Terrain 64' from DER, 214' left of centerline, 2730' MSL. Vehicles on roadway 196' from DER, left and right of centerline up to 15' AGL/2748' MSL. **Rwy 26**, fence abeam DER, 250' right of centerline, up to 10' AGL/2731' MSL. Light support structure 10' from DER, 28' right of centerline, 2' AGL/2731' MSL. Vehicles on roadway beginning 141' from DER, left and right of centerline, up to 15' AGL/2746' MSL. Building 322' from DER, 573' left of centerline, 46' AGL/2755' MSL. Trees beginning 436' from DER, 78' left of centerline, up to 51' AGL/2771' MSL. Trees beginning 746' from DER, 39' right of centerline, up to 46' AGL/2766' MSL.

FORT BENTON, MT

FORT BENTON

TAKE-OFF MINIMUMS: **Rwys 5, 23**, std. w/ min. climb of 274' per NM to 8900 or 5100-3 for climb in visual conditions.

DEPARTURE PROCEDURE: **Rwys 5, 23**, for climb in visual conditions: Cross Fort Benton Airport at or above 8900 MSL before proceeding on course.

FORT BRIDGER, WY

FORT BRIDGER

DEPARTURE PROCEDURE: **All aircraft** climb direct FBR VOR/DME. Aircraft departing; FBR R-210 CW R-135 climb on course; FBR R-136 CW R-209 cross FBR VOR/DME at or above 9000. (Hold NE, right turns, 215° inbound).

FRIDAY HARBOR, WA

FRIDAY HARBOR (FHR)

AMDT 3 10322

TAKE-OFF MINIMUMS: **Rwy 34**, 400-2.

DEPARTURE PROCEDURE: **Rwy 16**, climb to 1000 via heading 157° then climbing left turn direct FHR NDB, thence...

Rwy 34 climb to 1000 via heading 337° then climbing left turn direct FHR NDB, thence...

...continue climb-in-hold in FHR NDB holding pattern (Hold S, right turns, 339° inbound) to cross FHR NDB at or above 2300 before proceeding on course.

NOTE: **Rwy 16**, trees beginning 556' from DER, 20' left of centerline, up to 85' AGL/212' MSL. Trees, fence, and road beginning 27' from DER, 67' right of centerline, up to 85' AGL/220' MSL. **Rwy 34**, trees, beacon and pole beginning 385' from DER, 92' left of centerline, up to 85' AGL/348' MSL. Trees, building and antenna beginning 808' from DER, 16' right of centerline, up to 85' AGL/504' MSL.

GILLETTE, WY

GILLETTE-CAMPBELL COUNTY (GCC)

AMDT 4 09071 (FAA)

TAKE-OFF MINIMUMS: **Rwy 16**, std. w/ min. climb of 275' per NM to 5600, or 1200-3 for climb in visual conditions.

Rwy 21, 600-3 or std. w/ min. climb of 425' per NM to 5200.

DEPARTURE PROCEDURE: **Rwy 16**, climb via heading 158° to 5100, before proceeding on course or, for climb in visual conditions cross Gillette-Campbell County airport at or above 5400 before proceeding on course. **Rwy 21**, climb via heading 206° to 5200, before proceeding on course.

NOTE: **Rwy 3**, windsock 1415' from DER, 100' left of centerline, 24' AGL/4366' MSL. Trees beginning 1976' from DER, 267' right of centerline, up to 30' AGL/4409' MSL. **Rwy 16**, tower and poles beginning 1.61 NM from DER, 1264' left of centerline, up to 57' AGL/4696' MSL. Post and trees beginning 1.77 NM from DER, 300' right of centerline, up to 51' AGL/4789' MSL. **Rwy 21**, fence 328' from DER, 267' left of centerline, 7' AGL/4352' MSL, trees 2077' from DER, 1011' right of centerline, 30' AGL/4449' MSL, tree 7029' from DER, 2378' right of centerline, 30' AGL/4729' MSL. **Rwy 34**, fence 123' from DER, 723' left of centerline, 16' AGL/4380' MSL. Vehicle on road 1609' from DER, 419' left of centerline, 15' AGL/4394' MSL. Trees 3093' from DER, 936' right of centerline, 30' AGL/4449' MSL. Vehicle on road 1610' from DER, 419' left of centerline, 15' AGL/4380' MSL.

31 MAY 2012 to 28 JUN 2012

31 MAY 2012 to 28 JUN 2012

12152

TAKE-OFF MINIMUMS AND (OBSTACLE) DEPARTURE PROCEDURES

NW-1

TAKE-OFF MINIMUMS AND (OBSTACLE) DEPARTURE PROCEDURES

12152

GLASGOW, MT

WOKAL FIELD/GLASGOW INTL (GGW)

ORIG 11349 (FAA)

NOTE: **Rwy 30**, terrain 6' from DER, 500' right of centerline 2291' MSL.

GLENDEIVE, MT

DAWSON COMMUNITY (GDV)

ORIG 11237 (FAA)

NOTE: **Rwy 12**, light support structure beginning 8' from DER, left and right of centerline, up to 15' AGL/2456' MSL. Vehicle on road 514' from DER, 555' left of centerline, 56' AGL/2468' MSL. Windsock 6' from DER, 301' left of centerline, 29' AGL/2464' MSL. **Rwy 20**, vehicle on road beginning 367' from DER, left and right of centerline, up to 36' AGL/2471' MSL. **Rwy 30**, trees beginning 311' from DER, 511' left of centerline, up to 10' AGL/2487' MSL. Light support structures beginning 8' from DER, left and right of centerline, up to 9' AGL/2460' MSL. Fence beginning 193' from DER, left and right of centerline, up to 34' AGL/2468' MSL. Sign 27' from DER, 200' left of centerline, 9' AGL/2460' MSL. Vehicle on road beginning 298' from DER, left and right of centerline, up to 26' AGL/2477' MSL. Vehicle on road beginning 427' from DER, 145' left of centerline, up to 26' AGL/2477' MSL. Post 428' from DER, 241' left of centerline, 23' AGL/2474' MSL.

GOODING, ID

GOODING MUNI (GNG)

ORIG 08269 (FAA)

DEPARTURE PROCEDURE: **Rwy 7**, climb heading 068° to 5000 before turning left. **Rwy 25**, climb heading 233° to 5600 before turning right.NOTE: **Rwy 7**, rising terrain 59' from departure end of runway, 479' right of centerline, up to 3754' MSL. Fence line 653' from departure end of runway, 332' right of centerline, 12' AGL up to 3751' MSL. Bushes starting 877' from departure end of runway, 420' right of centerline, 20' AGL up to 3795' MSL. **Rwy 25**, vehicle on road, 91' from departure end of runway, 257' left of centerline, up to 10' AGL/3678' MSL.

GRANGEVILLE, ID

IDAHO COUNTY (S80)

AMDT 1 08157 (FAA)

TAKE-OFF MINIMUMS: **Rwy 7**, NA - Obstacles. DEPARTURE PROCEDURE: **Rwy 25**, Use MELLR DEPARTURE.

GRANTS PASS, OR

GRANTS PASS

TAKE-OFF MINIMUMS: **Rwy 12**, NA. **Rwy 30**, 4000-3 or std. with a min. climb of 360' per NM to 5000. DEPARTURE PROCEDURE: **Rwy 30**, climb via heading 320 until passing 5000, then climbing right turn direct RBG VOR/DME. Cross RBG VOR/DME at or above MEA for route of flight.

GRAY AAF (KGRF)

FORT LEWIS, WA AMDT 2, 10098

Rwy 15, Standard**Rwy 33**, 300-1*

* Or standard with minimum climb of 430'/NM to 600.

DEPARTURE PROCEDURE: **Rwy 15**, Climb heading 147° to 700 then climbing left turn direct GRF NDB.**Rwy 33**, Climb direct GRF NDB. Aircraft departing 330° CW 070° and 135° CW 260° bearing from GRF NDB climb on course. All others continue climb in GRF NDB holding pattern (hold NW, RT, 147° inbound) to cross GRF NDB at or above: 071° CW 134° bearing from GRF NDB, 8500; 261° CW 329° bearing from GRF NDB, 1500. TAKE-OFF OBSTACLES: **Rwy 15**, Tree 100' AGL/439' MSL, 1848' from DER, 430' right of centerline. **Rwy 33**, Tree 100' AGL/479' MSL, 3465' from DER, 1338' left of centerline.

GREAT FALLS, MT

GREAT FALLS INTL

NOTE: **Rwy 7**, obstruction light on lighted wind sock 237' from departure end of runway, 519' left of centerline, 34' AGL/3694' MSL. Obstruction light on building 2226' from departure end of runway, 614' left of centerline, 78' AGL/3738' MSL. Building on 681' from departure end of runway, 583' right of centerline, 48' AGL/3688' MSL. Multiple light poles beginning 1359' from departure end of runway, 440' right of centerline, up to 90' AGL/3746' MSL. **Rwy 21**, pole 1544' from departure end of runway, 791' left of centerline, 45' AGL/3725' MSL. **Rwy 25**, windmill 2.3 NM from departure end of runway, 4197' right of centerline, 338' AGL/4003' MSL.

GREYBULL, WY

SOUTH BIG HORN COUNTY (GEY)

ORIG-A 09239 (FA)

TAKE-OFF MINIMUMS: **Rwy 25**, 300-1 or std. w/min. climb of 260' per NM to 4200.DEPARTURE PROCEDURE: **All runways**, for departures on Gey bearings 320° CW 150°, climb in Gey NDB holding pattern to 9000 before departing on course, then continue climb to MEA or assigned altitude. Departures Gey bearings 150° CW 320° climb on course.NOTE: **Rwy 25**, bush 4955' from DER, 1268' right of centerline, 2' AGL/4101' MSL.

GUERNSEY, WY

CAMP GUERNSEY (7V6)

AMDT 1 11097 (FAA)

TAKE-OFF MINIMUMS: **Rwy 14**, 300-2½ or std. w/min. climb of 363' per NM to 4800. **Rwy 32**, std. w/min. climb of 360' per NM to 6500 or 2400-3 for climb in visual conditions.DEPARTURE PROCEDURE: **Rwy 14**, climb heading 141° to 5800 before proceeding on course. **Rwy 32**, climbing right turn heading 070° to 6500 before proceeding on course or for climb in visual conditions cross Camp Guernsey Airport at or above 6700 before proceeding on course.NOTE: **Rwy 14**, vehicles on road 42' from DER, 209' right of centerline, up to 15' AGL/4334' MSL. Trees beginning 731' from DER, 336' right of centerline, up to 45' AGL/4564' MSL. **Rwy 32**, trees beginning 181' from DER, 155' left of centerline, up to 45' AGL/4424' MSL. Trees beginning 999' from DER, 192' right of centerline, up to 45' AGL/4504' MSL.

12152

TAKE-OFF MINIMUMS AND (OBSTACLE) DEPARTURE PROCEDURES

NW-1

TAKE-OFF MINIMUMS AND (OBSTACLE) DEPARTURE PROCEDURES

12152

HAILEY, ID

FRIEDMAN MEMORIAL

TAKE-OFF MINIMUMS: **Rwy 13**, 2700-3 w/ min. climb of 307' per NM to 6400, or 3600-3 for climb in visual conditions. **Rwy 31**, NA-obstacles.

DEPARTURE PROCEDURE: **Rwy 13**, Climbing right turn heading 149°, then on 160° course to HLE NDB, or for climb in visual conditions: cross Friedman Memorial Airport at or above 8800 heading 151°; then on 151° course to HLE NDB.

NOTE: **Rwy 13**, multiple trees beginning 763' from departure end of runway, 3' right of centerline, up to 100' AGL/5345' MSL. Multiple trees beginning 1.3 NM from departure end of runway, 2587' right of centerline, up to 100' AGL/6099' MSL.

HAMILTON, MT

RAVALLI COUNTY

DEPARTURE PROCEDURE: Use HAMEY RNAV DEPARTURE.

HAVRE, MT

HAVRE CITY-COUNTY (HVR)

AMDT 3 09351 (FAA)

TAKE-OFF MINIMUMS: **Rwy 8**, 300-1¾ or std. w/ min. climb of 217' per NM to 3300.

DEPARTURE PROCEDURE: **Rwy 3**, climb heading 032° to 3300 then climbing left turn to 8000 direct HVR VOR/ DME thence... **Rwy 8**, climb heading 077° to 3300 then climbing left turn to 8000 via HVR R-025 to HVR VOR/ DME thence... **Rwy 21**, climb heading 212° to 3300 then climbing right turn to 8000 direct HVR VOR/ DME thence... **Rwy 26**, climb heading 257° to 3300 then climbing right turn to 8000 direct HVR VOR/ DME thence...

...continue climb in hold in HVR VOR/DME holding pattern (hold west, right turns, 094° inbound) to cross HVR VOR/ DME at or above 8000 before proceeding on course.

NOTE: **Rwy 3**, pole 1039' from DER, 1044' left of centerline, 21' AGL/2680' MSL. **Rwy 8**, obstruction light on windsock 59' from DER, 224' left of centerline, 9' AGL/2588' MSL. Tree 1192' from DER, 752' left of centerline, 25' AGL/2610' MSL. Tank 1.3 NM from DER, 2287' left of centerline, 57' AGL/2797' MSL. **Rwy 26**, light on windsock, 50' from DER, 225' right of centerline, 9' AGL/2589' MSL. Trees beginning 1617' from DER, 650' right of centerline, 25' AGL/2659' MSL.

HELENA, MT

HELENA RGNL (HLN)

ADMT 10 11181 (FAA)

DEPARTURE PROCEDURE: use DIVIDE DEPARTURE.

HERMISTON, OR

HERMISTON MUNI

NOTE: **Rwy 4**, tower 379' left of departure end of runway, 50' AGL/698' MSL. **Rwy 22**, light pole 456' left of departure end of runway, 44' AGL/684' MSL.

HOQUIAM, WA

BOWERMAN

TAKE-OFF MINIMUMS: **Rwy 6**, 600-2 or std. with a min. climb of 260' per NM to 600.

DEPARTURE PROCEDURE: **Rwy 6**, climbing right turn heading 110°: **Rwy 24**, climb runway heading. **All aircraft** climb to 600 continue climb on course.

HULETT, WY

HULETT MUNI (W43)

ORIG 07354 (FAA)

TAKE-OFF MINIMUMS: **Rwy 13**, std. w/ min. climb of 450' per NM to 6300, or 500-2¾ w/ min. climb of 295' per NM to 7700, or 2200-3 for climb in visual conditions.

DEPARTURE PROCEDURE: **Rwy 13**, climb to 7700 via heading 132° before proceeding on course, or climb in visual conditions: cross Hulett Muni Airport at or above 6300 before proceeding on course. **Rwy 31**, climbing right turn on a heading between 090° clockwise to 115° from departure end of runway to 7700 before proceeding on course.

NOTE: **Rwy 13**, road 398' from departure end of runway, 37' left of centerline, 15' AGL/4296' MSL, truck on road 1126' from departure end of runway, 346' right of centerline, 15' AGL/4334' MSL, trees beginning 4945' from departure end of runway, across centerline, up to 100' AGL/4657' MSL.

Rwy 31, terrain 104' from departure end of runway, 420' left of centerline, 4200' MSL, terrain 344' from departure end of runway, 233' left of centerline, 4207' MSL.

IDAHO FALLS, ID

IDAHO FALLS RGNL (IDA)

AMDT 4 09351 (FAA)

DEPARTURE PROCEDURE: **All aircraft** departing IDA R-160 CW R-040 climb on course. **All others** climb direct IDA VOR/DME. Continue climb in IDA holding pattern (South, left turns, 019° inbound) to cross IDA VOR/DME at or above 7500 before proceeding on course.

NOTE: **Rwy 2**, pole 1039' from DER, 758' left of centerline, 42' AGL/4762' MSL. **Rwy 17**, trees, flagpole, building, light and vent on buildings, and vehicle on road beginning 29' from DER, 10' right of centerline, up to 84' AGL/4820' MSL. Trees and vent on building beginning 569' from DER, 22' left of centerline, up to 35' AGL/4760' MSL. Trees, antenna, and light poles beginning 1853' from DER, 26' right of centerline, up to 121' AGL/4851' MSL. **Rwy 35**, trees and railroad beginning 410' from DER, 503' right of centerline, up to 49' AGL/4769' MSL. Tree 1034' from DER, 715' left of centerline, 42' AGL/4762' MSL.

JACKSON, WY

JACKSON HOLE

DEPARTURE PROCEDURE: **Rwy 1**, use GEYSER DEPARTURE. **Rwy 19**, use TETON DEPARTURE.

31 MAY 2012 to 28 JUN 2012

31 MAY 2012 to 28 JUN 2012

12152

TAKE-OFF MINIMUMS AND (OBSTACLE) DEPARTURE PROCEDURES

TAKE-OFF MINIMUMS AND (OBSTACLE) DEPARTURE PROCEDURES

12152

JEROME, ID

JEROME COUNTY (JER)
AMDT 2 09295 (FAA)

TAKE-OFF MINIMUMS: **Rwy 9**, 500-1¾ or std. w/ min. climb of 435' per NM to 4700.

DEPARTURE PROCEDURE: **Rwy 9**, climb heading 086° to 5300 before proceeding on course. **Rwy 27**, climb heading 266° to 4800 before proceeding on course.

NOTE: **Rwy 9**, bush 140' from DER, 500' left of centerline, 16' AGL/4076' MSL. Poles starting 1432' from DER, 32' left of centerline, up to 47' AGL/4169' MSL. Sign 1473' from DER, 547' left of centerline, 49' AGL/4119' MSL. Obstruction light on building 1510' from DER, 6' left of centerline, 43' AGL/4103' MSL. Trees starting 1651' from DER, 100' left of centerline, up to 53' AGL/4137' MSL. Building 2186' from DER, 173' left of centerline, 29' AGL/4119' MSL. Rising terrain starting 2549' from DER, 560' left of centerline, up to 4219' MSL. AG equip 4752' from DER, 517' left of centerline, 26' AGL/4175' MSL. Poles starting 600' from DER, 254' right of centerline, up to 48' AGL/4173' MSL. **Rwy 27**, fence starting 18' from DER, 440' left of centerline, up to 9' AGL/3969' MSL.

JOHN DAY, OR

GRANT COUNTY RGNL/OGLIVIE FIELD (GCD)
AMDT 1 09015 (FAA)

TAKE-OFF MINIMUMS: **Rwys 9, 17, 35**, NA, Terrain.

DEPARTURE PROCEDURE: **Rwy 27**, climbing left turn to 12000 heading 270° and IMB R-100 to IMB VORTAC, climb in IMB VORTAC holding pattern (E, right turns, 280° inbound) to cross IMB VORTAC at or above MEA for route of flight.

NOTE: **Rwy 27**, fence beginning 195' from departure end of runway, 50' right of centerline, up to 16' AGL/3665' MSL. Trees beginning 229' from departure end of runway, 261' right of centerline, up to 26' AGL/3662' MSL. Bush 389' from departure end of runway, 438' right of centerline, 20' AGL/3659' MSL.

KALISPELL, MT

GLACIER PARK INTL

DEPARTURE PROCEDURE: Use SKOTT DEPARTURE.

KELSO, WA

SOUTHWEST WASHINGTON RGNL (KLS)
AMDT 3 10098 (FAA)

TAKE-OFF MINIMUMS: **Rwy 12**, NA, terrain. **Rwy 30**, std. with a min. climb of 370' per NM to 1900 or 1900-2½ for climb in visual conditions.

DEPARTURE PROCEDURE: **Rwy 30**, climb heading 303° to 1900 then climbing right turn to 3900 direct LSO NDB. Continue climb in LSO NDB holding pattern (North, right turns, 175° inbound) to cross LSO NDB at or above 3900, then via BTG R-310 to BTG VORTAC. For climb in visual conditions: cross Southwest Washington Rgnl at or above 1800, then via BTG R-309 to BTG VORTAC.

NOTE: **Rwy 30**, light pole 22' from DER, 301' right of centerline, 30' AGL/49' MSL. Windsock 235' from DER, 348' left of centerline, 30' AGL/49' MSL. Rotating beacon 502' from DER, 425' left of centerline, 50' AGL/70' MSL. Multiple trees beginning 213' from DER, 530' right to 747' left of centerline, up to 136' AGL/155' MSL. Pole 964' from DER, 44' right of centerline, 30' AGL/50' MSL.

KEMMERER, WY

KEMMERER MUNI (EMM)
AMDT 2 12152 (FAA)

TAKE-OFF MINIMUMS: **Rwys 4, 10, 22, 28**, NA - Rwy surfaces. DEPARTURE PROCEDURE: **Rwy 16**, climb heading 160° to 9100, then climbing left turn to intercept FBR VOR/DME R-330 to FBR VOR/DME before proceeding on course. **Rwy 34**, climb heading 340° to 8200, then climbing right turn on heading 135° and FBR VOR/DME R-345 to FBR VOR/DME before proceeding on course.

NOTE: **Rwy 16**, fence beginning 150' from DER, 248' right of centerline, up to 6' AGL/7283' MSL. **Rwy 34**, terrain 7' from DER, left and right of centerline, up to 7290' MSL. Fence beginning 8' from DER, 248' left of centerline, up to 6' AGL/7295' MSL.

KLAMATH FALLS, OR

KLAMATH FALLS (LMT)
AMDT 5 10210 (FAA)

TAKE-OFF MINIMUMS: **Rwy 7**, NA - Terrain. **Rwy 14**, std. w/ min. climb of 300' per NM to 7100, or 3100 - 3 for climb in visual conditions. **Rwy 25**, std. w/ min. climb of 400' per NM to 7100, or 3100 - 3 for climb in visual conditions. **Rwy 32**, std. w/ min. climb of 350' per NM to 7100, or 3100 - 3 for climb in visual conditions.

DEPARTURE PROCEDURE: **Rwy 14**, climb heading 141° to 6500 then climbing right turn to intercept LMT R-181 to LMT VORTAC, thence... or for climb in visual conditions: cross Klamath Falls airport at or above 7000 direct LMT VORTAC, thence... **Rwy 25**, climb heading 253° to 6000 then climbing right turn to intercept LMT R-306 to LMT VORTAC, thence... or for climb in visual conditions: cross Klamath Falls airport at or above 7000 direct LMT VORTAC, thence... **Rwy 32**, climb heading 321° to 6700 then climbing left turn to intercept LMT R-277 to LMT VORTAC, thence... or for climb in visual conditions: cross Klamath Falls airport at or above 7000 direct LMT VORTAC, thence...

... continue climb in LMT VORTAC holding pattern (West, Right Turns, 070° inbound) to cross LMT VORTAC at or above MEA for route of flight.

NOTE: **Rwy 14**, trees 3108' from DER, 1240' left of centerline, 100' AGL/4183' MSL. **Rwy 25**, terrain and trees beginning 597' from DER, 420' left of centerline, up to 100' AGL/4499' MSL. Vehicles on road and railroad beginning 254' from DER, 127' left of centerline, up to 23' AGL/4113' MSL. **Rwy 32**, multiple trees beginning 2625' from DER, 742' left of centerline, up to 100' AGL/4191' MSL.

LA GRANDE, OR

LA GRANDE/UNION COUNTY

TAKE-OFF MINIMUMS: **Rwy 12**, Cat A/B 2900-3 or std. with a min. climb of 350' per NM to 6100. Cat C/D 4500-3 or std. with a min. climb of 500' per NM to 7800. **Rwy 30**, Cat A/B 2900-3 or std. with a min. climb of 350' per NM to 6100. Cat C/D 3600-3 or std. with a min. climb of 450' per NM to 6800. **Rwy 34**, 2900-3 or std. with a min. climb of 350' per NM to 6100. **Rwy 16**, 2000-3 or std. with a min. climb of 500' per NM to 5000.

DEPARTURE PROCEDURE: **Rwy 12, 16**, climbing left turn direct LGD NDB, thence; **Rwys 30, 34**, climbing right turn heading 010°; thence; all aircraft climb to 7000 via the 339° bearing from LGD NDB, then climbing right turn direct LGD NDB.

12152

TAKE-OFF MINIMUMS AND (OBSTACLE) DEPARTURE PROCEDURES

NW-1

TAKE-OFF MINIMUMS AND (OBSTACLE) DEPARTURE PROCEDURES

12152

LAKEVIEW, OR

LAKE COUNTY

TAKE-OFF MINIMUMS: **Rwy 16**, 3700-5 or std. with a min. climb of 320' per NM to 8800. **Rwy 34**, 2500-5 or std. with a min. climb of 320' per NM to 8500.

DEPARTURE PROCEDURE: **Rwy 16**, climbing right turn via LKV R-163 to LKV VORTAC. **Rwy 34**, climbing left turn heading 320° to intercept LKV R-148 then via LKV R-148 to LKV VORTAC. **All aircraft** continue climbing in the LKV VORTAC holding pattern (NW, right turns, 148° inbound) to MEA for route of flight.

LARAMIE, WY

LARAMIE RGNL (LAR)

AMDT 2 12096 (FAA)

DEPARTURE PROCEDURE: **Rwys 3, 12, 21, 30**, use LARAMIE DEPARTURE.

LAUREL, MT

LAUREL MUNI

TAKE-OFF MINIMUMS: **Rwys 9, 14, 27, 32, NA**.

DEPARTURE PROCEDURE: **Rwy 22**, turn left.

All aircraft climb direct BIL VORTAC.

LEWISTON, ID

LEWISTON-NEZ PERCE COUNTY (LWS)

AMDT 3A 10182 (FAA)

DEPARTURE PROCEDURE: **Rwys 8, 12, 26, 30**, turn left direct MQG VOR/DME. Continue climb in holding pattern (W, left turns, 066° inbound) to cross MQG VOR/DME at or above 3600.

LEWISTOWN, MT

LEWISTOWN MUNI (LWT)

AMDT 3A 11041 (FAA)

TAKE-OFF MINIMUMS: **Rwy 3**, 1800-2 or std. with a min. climb of 280' per NM to 6900. **Rwys 8, 13**, 900-2 or std. with a min. climb of 220' per NM to 6200.

DEPARTURE PROCEDURE: **Rwys 3, 31** turn left. **Rwys 8, 13, 21**, turn right. **Rwy 26**, climb runway heading. **All aircraft** climb direct LWT VORTAC. Continue climb in holding pattern (W, right turns, 094° inbound) to MEA for route of flight.

LEXINGTON, OR

LEXINGTON

TAKE-OFF MINIMUMS: **Rwy 26**, std. with min. climb of 280' per NM to 7600, or 1600-2½ for climb in visual conditions. **Rwy 8**, std. with min. climb of 490' per NM to 4200, or 1600-2½ for climb in visual conditions.

DEPARTURE PROCEDURE: **Rwys 8, 26**, for climb in visual conditions: cross Lexington Airport at or above 3600.

NOTES: **Rwy 8**, trees 1.42 NM from departure end of runway, 2386' left of centerline, 100' AGL/2159' MSL.

Trees 1.48 NM from departure end of runway, 2755' left of centerline, 100' AGL/2179' MSL.

LIBBY, MT

LIBBY

TAKE-OFF MINIMUMS: **Rwy 33**, not authorized. **Rwy 15**, use EYESE RNAV DEPARTURE.

LIVINGSTON, MT

MISSION FIELD (LVM)

AMDT 3 09071 (FAA)

TAKE-OFF MINIMUMS: **Rwys 8, 13, 26, 31, NA**-Environmental.

DEPARTURE PROCEDURE: **Rwys 4, 22**, Use LIVINGSTON DEPARTURE.

MADRAS, OR

MADRAS MUNI (S33)

AMDT 1 10154 (FAA)

TAKE-OFF MINIMUMS: **Rwys 16, 22**, std. with a min. climb of 298' per NM to 3900 or 1300-3 for climb in visual conditions

DEPARTURE PROCEDURE: **Rwys 4, 34**, climbing left turn heading 210° to intercept DSD R-348 to DSD VORTAC, thence... **Rwy 16**, climbing right turn heading 210° to intercept DSD R-348 to DSD VORTAC, thence... , or for climb in visual conditions: cross Madras Muni airport at or above 3600 MSL, then proceed on DSD R-356 to DSD VORTAC, thence... **Rwy 22**, climb heading 216° to intercept DSD R-348 to DSD VORTAC, thence... , or for climb in visual conditions: cross Madras Muni airport at or above 3600 MSL, then proceed on DSD R-356 to DSD VORTAC, thence...

...continue climb-in-hold (hold North, right turns, 168° inbound) to MEA/MCA for route of flight.

NOTE: **Rwy 4**, vehicle on road beginning 7' from DER, 268' left of centerline, up to 15' AGL/2444' MSL. Airplane on tarmac 60' from DER, 252' right of centerline, 40' AGL/2469' MSL. Bush 383' from DER, 483' right of centerline, 19' AGL/2439' MSL. Vehicle on road 742' from DER, 112' right of centerline, up to 15' AGL/2447' MSL. **Rwy 16**, bushes beginning 196' from DER, 151' left of centerline, up to 14' AGL/2444' MSL. Airplane on tarmac 1357' from DER, 280' right of centerline 40' AGL/2479' MSL. **Rwy 34**, bushes beginning 92' from DER, 116' right of centerline, up to 17' AGL/2437' MSL. Airplane on tarmac 1396' from DER, 375' left of centerline, 40' AGL/2469' MSL.

MALTA, MT

MALTA (M75)

ORIG 11349 (FAA)

DEPARTURE PROCEDURE: **Rwy 26**, climb heading 257° to 3000 before turning right.

NOTE: **Rwy 8**, wind sock 37' from DER, 433' left of centerline, 12' AGL/2273' MSL. **Rwy 26**, vehicle on roadway 348' from DER, 507' left of centerline, 15' AGL/2265' MSL.

MC CALL, ID

MC CALL MUNI (MYL)

AMDT 3 11293 (FAA)

TAKE-OFF MINIMUMS: **Rwy 34**, NA-Obstacles. DEPARTURE PROCEDURE: **Rwy 16**, use PEPUC (RNAV) DEPARTURE.

12152

TAKE-OFF MINIMUMS AND (OBSTACLE) DEPARTURE PROCEDURES

NW-1

TAKE-OFF MINIMUMS AND (OBSTACLE) DEPARTURE PROCEDURES

12152

MC CHORD FIELD (KTCM)

TACOMA, WA
10154

DEPARTURE PROCEDURE: **Rwy 16**, Track heading 160°; turn left to intercept SEA VORTAC R-168 (V495) to SEA 168/37.1 DME (ALDER). Cross ALDER at or above 4000. After ALDER, maintain MEA/MOCA for route of flight. **Rwy 34**, Track heading 340°; then turn right to intercept SEA VORTAC R-168 (V495) to SEA R-168/37.1 DME (ALDER). Cross ALDER at or above 4000. Maintain MEA/MOCA for route of flight.

TAKEOFF OBSTACLES: **Rwy 16**, Grove of trees 143' AGL/454' MSL, 4892' from DER, 1353' left of centerline. Grove of trees 102' AGL/419' MSL, 2395' from DER, 1028' right of centerline. Trees 136' AGL/447' MSL, 2867' from DER, 1261' left of centerline. Trees 120' AGL/430' MSL, 2594' from DER, 1113' left of centerline. Trees 85' AGL/394' MSL, 2310' from DER, 957' left of centerline. Trees 83' AGL/392' MSL, 2006' from DER, 959' left of centerline. Trees 87' AGL/389' MSL, 1758' from DER, 971' left of centerline. **Rwy 34**, Tree 106' AGL/348' MSL, 2307' from DER, 1038' left of centerline. Tree 121' AGL/370' MSL, 3190' from DER, 526' right of centerline. Aircraft 65' AGL/317' MSL, 186' from DER, 407' left of centerline. Tree 64' AGL/343' MSL, 2260' from DER, 1036' left of centerline. Building 40' AGL/321' MSL, 1668' from DER, 810' left of centerline.

MC MINNVILLE, OR

MC MINNVILLE MUNI (MMV)
AMDT 4 08325 (FAA)

TAKE-OFF MINIMUMS: **Rwy 4**, 400-1¼ or std. w/ min. climb of 238' per NM to 400, or alternatively, with standard take-off minimums and normal 200'/NM climb gradient, take-off must occur no later than 2000' prior to departure end of runway. **Rwy 17**, std. w/ min. climb of 300' per NM to 1200 or 1800-2½ for climb in visual conditions. **Rwy 22**, std. w/ min. climb of 303' per NM to 1400 or 1800-2½ for climb in visual conditions.

DEPARTURE PROCEDURE: **Rwy 4**, climb heading 038° to intercept UBG R-170 to UBG VOR/DME, thence...

Rwy 17, 22, climbing left turn to intercept UBG R-183 to UBG VOR/DME, thence ... or for climb in visual conditions: cross McMinville Muni at or above 1800 before proceeding on course. **Rwy 35**, climb heading 347° to intercept UBG R-221 to UBG VOR/DME, thence...

... continue climb in UBG VOR/DME holding pattern (S, left turns, 003° inbound) until reaching MEA for route of flight.

NOTE: **Rwy 4**, multiple trees beginning 2040' from departure end of runway, 353' left and 209' right of centerline, up to 100' AGL/339 feet MSL. **Rwy 17**, tree 1719' from departure end of runway, 456' right of centerline, 100' AGL/231' MSL. Tree 1760' from departure end of runway, 627' left of centerline, 100' AGL/257' MSL. **Rwy 22**, multiple trees beginning 282' from departure end of runway, 120' left and 144' right of centerline, up to 100' AGL/246' MSL. Tree 4047' from departure end of runway, 1319' left of centerline, 100' AGL/284' MSL. **Rwy 35**, multiple trees beginning 1551' from departure end of runway, 229' right of centerline, up to 100' AGL/277' MSL.

12152

TAKE-OFF MINIMUMS AND (OBSTACLE) DEPARTURE PROCEDURES

MEDFORD, OR

ROGUE VALLEY INTL-MEDFORD (MFR)
AMDT 9B 11321 (FAA)

TAKE-OFF MINIMUMS: **Rwys 9, 27**, NA-Obstacles. **Rwy 14**, std. w/ min. climb of 430' per NM to 4600, or 2900-3 for climb in visual conditions. **Rwy 32**, std. with a min. climb of 260' per NM to 6800, or 2900-3 for climb in visual conditions.

DEPARTURE PROCEDURE: **Rwy 14**, climbing right turn direct OED VORTAC, or for climb in visual conditions, cross Rogue Valley Intl airport at or above 4100 before proceeding direct OED VORTAC...

Rwy 32, climbing right turn direct OED VORTAC, or for climb in visual conditions, cross Rogue Valley Intl airport at or above 4100 before proceeding direct OED VORTAC...

...all aircraft climb in OED VORTAC holding pattern (hold NW, right turns, 153° inbound) to cross OED VORTAC at or above 6400.

NOTE: **Rwy 14**, obstruction light on DME, light on pole, building, and poles beginning 898' from DER, 40' right of centerline, up to 37' AGL/1377' MSL. Obstruction light on localizer and pole beginning 997' from DER, on centerline, up to 17' AGL/1352' MSL. Obstruction light on pole, rod on light, poles, and buildings beginning 2085' from DER, 109' left of centerline, up to 44' AGL/1383' MSL. Tree beginning 1.8 NM from DER, 1356' left of centerline, up to 56' AGL/1595' MSL. **Rwy 32**, pole and trees beginning 1074' from DER, 316' left of centerline, up to 100' AGL/1372' MSL. Antenna on building and trees beginning 1313' from DER, 430' right of centerline, up to 90' AGL/1369' MSL.

MILES CITY, MT

FRANK WILEY FIELD (MLS)
ORIG 11349 (FAA)

NOTE: **Rwy 4**, REIL 40' from DER, 112' left of centerline, 1' AGL/2627' MSL. REIL 40' from DER, 115' right of centerline, 2' AGL/2628' MSL. Fence 130' from DER, 400' left of centerline, up to 8' AGL/2629' MSL. **Rwy 12**, fence 215' from DER, left and right of centerline, up to 8' AGL/2634' MSL. **Rwy 22**, fence beginning 4' from DER, left and right of centerline, up to 8' AGL/2638' MSL. REIL 10' from DER, 112' left of centerline, 1' AGL/2630' MSL. REIL 10' from DER, 115' right of centerline, 2' AGL/2631' MSL. Sign 29' from DER, 199' left of centerline, 6' AGL/2630' MSL. Terrain 30' from DER, 482' left of centerline, 2630' MSL. **Rwy 30**, trees beginning 69' from DER, left and right of centerline, up to 26' AGL/2647' MSL.

MISSOULA, MT

MISSOULA INTL (MSO)
AMDT 8 08213 (FAA)

TAKE-OFF MINIMUMS: **Rwys 7, 25**, NA-Obstacles. DEPARTURE PROCEDURE: **Rwys 11, 29**, use GRZLY DEPARTURE.

31 MAY 2012 to 28 JUN 2012

31 MAY 2012 to 28 JUN 2012

TAKE-OFF MINIMUMS AND (OBSTACLE) DEPARTURE PROCEDURES

12152

MOSES LAKE, WA

GRANT COUNTY INTL

NOTE: **Rwy 14R**, antenna 3902' from departure end of runway, 828' right of centerline, 98' AGL/1268' MSL. **Rwy 18**, pole 405' from departure end of runway, 334' right of centerline, 30' AGL/1209' MSL. Windsock 496' from departure end of runway, 371' left of centerline, 16' AGL/1195' MSL. **Rwy 32L**, pole 1326' from departure end of runway, 373' left of centerline, 22' AGL/1202' MSL.

MOUNTAIN HOME AFB (KMUO)

MOUNTAIN HOME, ID AMDT 1,12096

Rwy 12, 30, 6700-3*

* Or standard with minimum climb of 270/NM to 9100.

TAKE-OFF OBSTACLES: **Rwy 12**, Terrain 0' AGL/3035' MSL, 824' from DER, 721' right of centerline. Terrain 0' AGL/3035' MSL, 848' from DER, 686' right of centerline. Terrain 0' AGL/3032' MSL, 378' from DER, 600' right of centerline. Road/Vehicle 15' AGL/3024' MSL, 1144' from DER, 793' right of centerline. Power pole 35' AGL/3049' MSL, 2911' from DER, 939' right of centerline. Tower 30' AGL/3030' MSL, 1064' from DER, 901' right of centerline. Tower 28' AGL/3037' MSL, 1168' from DER, 795' right of centerline. Tower 45' AGL/3049' MSL, 2148' from DER, 1479' left of centerline. **Rwy 30**, Terrain 0' AGL/2995' MSL, 16' from DER, 500' left of centerline. Terrain 0' AGL/2995' MSL, 81' from DER, 500' left of centerline. Terrain 0' AGL/2995' MSL, 296' from DER, 579' left of centerline. Terrain 0' AGL/2995' MSL, 427' from DER, 614' left of centerline. Terrain 0' AGL/2995' MSL, 445' from DER, 619' left of centerline. Terrain 0' AGL/2998' MSL, 253' from DER, 568' right of centerline. Terrain 0' AGL/3000' MSL, 378' from DER, 500' right of centerline. Terrain 0' AGL/3007' MSL, 570' from DER, 653' right of centerline. Terrain 0' AGL/3002' MSL, 737' from DER, 525' right of centerline. Road/Vehicle 35' AGL/3018' MSL, 949' from DER, 772' left of centerline.

MOUNTAIN HOME, ID

MOUNTAIN HOME MUNI

TAKE-OFF MINIMUMS: **Rwy 10**, 3500-2 or std. with a min. climb of 305' per NM to 7300. **Rwy 2B**, 3500-2 or std. with a min. climb of 290' per NM to 7300.

DEPARTURE PROCEDURE: **Rwy 10**, climbing left turn direct STI NDB. **Rwy 2B**, climbing right turn direct STI NDB. All aircraft departing STI NDB bearing 080° CW 340° climb on course. All others continue climb in hold (E, left turns, 271° inbound) to cross STI NDB at or above 7300.

NAMPA, ID

NAMPA MUNI

DEPARTURE PROCEDURE: **Rwy 11**, climbing right turn direct MPA NDB, continue climb in MPA holding pattern (NW, right turns, 145° inbound). Depart MPA NDB at or above 5500 before proceeding on course. **Rwy 29**, climb runway heading to 3700 then climbing right turn direct MPA NDB, continue climb in MPA holding pattern (NW, right turns, 145° inbound). Depart MPA NDB at or above 5500 before proceeding on course.

NOTE: **Rwy 11**, 70' AGL tree, 1225' from departure end of runway, 90' right of centerline.

NEWCASTLE, WY

MONDELL FIELD (ECS)

AMDT 3A 09267 (FAA)

TAKE-OFF MINIMUMS: **Rwys 5, 17, 23, 35**, NA. **Rwy 13**, 200-1 or std. with a min. climb of 275' per NM to 4400. **Rwy 31**, 300-1 or std. with a min. climb of 300' per NM to 4600.

DEPARTURE PROCEDURE: **Rwy 31**, climbing left turn. All aircraft climb to 5500 via ECS R-143, then climbing right turn direct ECS VOR, continue climb on course.

NOTE: **Rwy 13**, fence posts, beginning 299' from DER, 218' left of centerline, up to 10' AGL/4190' MSL. Light on antenna 1951' from DER, 879' left of centerline, 84' AGL/4244' MSL. **Rwy 31**, multiple poles, beginning 74' from DER, 237' right of centerline, up to 20' AGL/4200' MSL. Bush 5787' from DER, 1441' right of centerline, 13' MSL/4363' MSL. Railroad 735' from DER, 314' right of centerline 30' AGL/4202' MSL. Road 207' from DER, 254' right of centerline, 15' AGL/4187' MSL.

NEWPORT, OR

NEWPORT MUNI

TAKE-OFF MINIMUMS: **Rwy 2**, NA. **Rwy 16**, 500-2 or std. with a min. climb of 310' per NM to 800.

DEPARTURE PROCEDURE: **Rwy 2**, NA. **Rwy 16**, turn right. **Rwy 34**, turn left. Aircraft departing via ONP R-180 CW R-320 depart on course. All others continue climbing via ONP R-200 to 1500 then climbing left turn direct ONP VORTAC. Cross ONP VORTAC at or above 2200.

31 MAY 2012 to 28 JUN 2012

31 MAY 2012 to 28 JUN 2012

12152

TAKE-OFF MINIMUMS AND (OBSTACLE) DEPARTURE PROCEDURES

TAKE-OFF MINIMUMS AND (OBSTACLE) DEPARTURE PROCEDURES

12152

NORTH BEND, OR

SOUTHWEST OREGON RGNL (OTH)

AMDT 5 10154 (FAA)

TAKE-OFF MINIMUMS: **Rwy 4**, std. with a min. climb of 475' per NM to 1200 or 900-3 with a min. climb of 300' per NM to 900 or 1600-2½ for climb in visual conditions.

Rwy 13, 400-2½ with a min. climb of 250' per NM to 2500 or 1600-2½ for climb in visual conditions. **Rwy 31**, 300-1¾ or std. with a min. climb of 280' per NM to 300.

DEPARTURE PROCEDURE: **Rwy 4**, climb heading 043° to intercept OTH VORTAC R-337 northwest bound to 1800 before proceeding on course, or for climb in visual conditions cross Southwest Oregon Rgnl airport at or above 1500 before proceeding on course. **Rwy 13**, climb heading 132° to 1300 before proceeding on course, or for climb in visual conditions cross Southwest Oregon Rgnl airport at or above 1500 before proceeding on course.

Rwy 22, climb heading 223° to 700 before proceeding on course. **Rwy 31**, climb heading 312° to 800 before proceeding on course.

NOTE: **Rwy 4**, Obstruction light on antenna 383' from DER, 207' right of centerline, 22' AGL/35' MSL. Ship 1000' from DER, on centerline, up to 140' MSL. Obstruction lights on bridge beginning 1886' from DER, 621' left of centerline, up to 93' AGL/93' MSL. Bridge beginning 4728' from DER, 580' right of centerline, 265' AGL/265' MSL. Obstruction lights on bridge beginning 4741' from DER, 948' right of centerline, up to 268' AGL/268' MSL. Transmission tower 5031' from DER, 677' right of centerline, 213' AGL/216' MSL. Trees beginning 1.2 NM from DER, 409' left of centerline, up to 150' AGL/549' MSL. Trees beginning 1.5 NM from DER, 1396' right of centerline, up to 150' AGL/629' MSL. Buildings beginning 1.7 NM from DER, 776' left of centerline, up to 73' AGL/393' MSL. **Rwy 13**, bushes beginning 38' from DER, 175' left of centerline, up to 16' AGL/33' MSL. Vehicle on road, 193' from DER, 237' left of centerline, up to 15' AGL/30' MSL. Bush 193' from DER, 145' right of centerline, up to 20' AGL/37' MSL. Trees beginning 346' from DER, 17' right of centerline, up to 150' AGL/349' MSL. Buildings beginning 504' from DER, 243' right of centerline, up to 86' AGL/106' MSL. Trees beginning 628' from DER, 6' left of centerline, up to 150' AGL/298' MSL. Antenna on building 712' from DER, 554' right of centerline, up to 51' AGL/68' MSL. Poles beginning 880' from DER, 13' right of centerline, up to 136' AGL/236' MSL. Spire 3467' from DER, 1122' left of centerline, 55' AGL/243' MSL. Pole 1.0 NM from DER, 159' left of centerline, up to 121' AGL/221' MSL. **Rwy 22**, ship 4050' from DER, on centerline, up to 140' MSL. **Rwy 31**, ship 1000' from DER, on centerline, up to 140' MSL. Trees beginning 5037' from DER, 15' left of centerline, up to 92' AGL/232' MSL. Trees beginning 5985' from DER, 1419' right of centerline, up to 108' AGL/188' MSL.

OAK HARBOR, WA

A J EISENBERG (OKH)

ORIG-A 09071 (FAA)

TAKE-OFF MINIMUMS: **Rwy 7**, 300-1. **Rwy 25**, 300-1 DEPARTURE PROCEDURE: **Rwy 7**, climb via heading 071° to 2000, then climbing right turn direct CVV VOR/DME. Continue climb on course. **Rwy 25**, climb via heading 251° to 2100, then climbing left turn direct CVV VOR/DME. Continue climb on course.

NOTE: **Rwy 7**, multiple trees beginning 1167' from DER, 212' left of centerline, up to 80' AGL/319' MSL. Multiple trees beginning 664' from DER, 208' right of centerline, up to 80' AGL/299' MSL. Fence 612' from DER, right and left of centerline, 10' AGL/229' MSL. Multiple bushes beginning 240' from DER, 64' left of centerline, up to 8' AGL/227' MSL. **Rwy 25**, cars on road 87' from DER, left and right of centerline, up to 15' AGL/174' MSL. Multiple trees beginning 2271' from DER, right and left of centerline, up to 80' AGL/279' MSL.

OLYMPIA, WA

OLYMPIA RGNL (OLM)

AMDT 5A 09127 (FAA)

TAKE-OFF MINIMUMS: **Rwy 17**, 300-2 or std. with a min. climb of 706' per NM to 600, or 2200-3 for climb in visual conditions.

DEPARTURE PROCEDURE: **Rwy 8**, climb heading 085° to 1000 then climbing left turn direct OLM VORTAC, thence... **Rwy 17**, climb heading 172° to 1200 then climbing right turn direct OLM VORTAC, thence... or climb in visual conditions to cross OLM VORTAC at or above 2300, thence... **Rwy s 26,35**, climbing right turn direct OLM VORTAC, thence...
...continue climb in OLM VORTAC holding pattern (south, right turn, 356° inbound) to cross OLM VORTAC at or above MEA/MCA for route of flight.

NOTE: **Rwy 8**, multiple trees beginning 880' from DER, 214' left of centerline, up to 100' AGL/343' MSL. Multiple trees beginning 1636' from DER, 131' right of centerline, up to 100' AGL/320' MSL. **Rwy 17**, multiple trees beginning 1008' from DER, 24' left of centerline, up to 100' AGL/490' MSL. Multiple trees beginning 752' from DER, 3' right of centerline, up to 100' AGL/370' MSL. **Rwy 26**, multiple trees and WSK on building beginning 475' from DER, 595' left of centerline, up to 100' AGL/330' MSL. Multiple trees beginning 338' from DER, 339' right of centerline, up to 100' AGL/309' MSL. **Rwy 35**, multiple trees beginning 2176' from DER, 198' left of centerline, up to 100' AGL/313' MSL. Multiple trees and field light on hangar beginning 657' from DER, 621' right of centerline, up to 100' AGL/315' MSL.

OMAK, WA

OMAK

TAKE-OFF MINIMUMS: **Rwy 17**, 2200-2 or std. with a min. climb of 300' per NM to 4200. **Rwy 35**, NA.

DEPARTURE PROCEDURE: **Rwy 17**, use GENTG RNAV DEPARTURE. **Rwy 35**, NA.

31 MAY 2012 to 28 JUN 2012

31 MAY 2012 to 28 JUN 2012

12152

TAKE-OFF MINIMUMS AND (OBSTACLE) DEPARTURE PROCEDURES

TAKE-OFF MINIMUMS AND (OBSTACLE) DEPARTURE PROCEDURES

12152

ONTARIO, OR

ONTARIO MUNI (ONO)

AMDT 4 11041 (FAA)

TAKE-OFF MINIMUMS: **Rwy 32**, 300-2 or std. w/ min. climb of 235' per NM to 2600, or alternatively, with std. takeoff minimums and a normal 200' per NM climb gradient, takeoff must occur no later than 2200' prior to DER, or 1400-3 for climb in visual conditions.

DEPARTURE PROCEDURE: **Rwy 32**, climb on a heading between 014°CW to 141° from DER, or minimum climb of 285' per NM to 9800 for all other courses, for climb in visual conditions cross Ontario Muni Airport at or above 3400 before proceeding on course.

NOTE: **Rwy 14**, multiple trees, poles, terrain, and buildings beginning 32' from DER, 40' right of centerline, up to 120' AGL/2216' MSL. Multiple trees, poles, fence, and buildings beginning 19' from DER, 30' left of centerline, up to 120' AGL/2263' MSL.

Rwy 32, multiple trees, poles, and buildings beginning 340' from DER, 309' left of centerline, up to 100' AGL/2458' MSL. Multiple trees, poles, and buildings 2' from DER, 190' right of centerline, up to 100' AGL/2431' MSL.

PASCO, WA

TRI-CITIES

DEPARTURE PROCEDURE: **All runways**, climb runway heading to 1000, thence... **Rwy 12**, turn left. All others turn right. **All aircraft** climb direct PSC VOR/DME before proceeding on course.

PENDLETON, OR

EASTERN OREGON RGNL AT PENDLETON

(PDT)

AMDT 3 09183 (FAA)

DEPARTURE PROCEDURE: **Rwys 7, 29, 34**, climbing left turn direct PDT VORTAC, thence...

Rwys 11, 16, climbing right turn direct PDT VORTAC, thence...

Rwy 25, climb direct PDT VORTAC, thence...
...continue climb in PDT VORTAC holding pattern (West, left turn, 073° inbound) to cross PDT VORTAC at or above MEA before proceeding on course.

NOTE: **Rwy 16**, multiple trees beginning 232' from DER, 348' right of centerline, up to 100' AGL/1579' MSL.

Rwy 25, multiple antennas and terrain beginning 203' from DER, 259' left of centerline, up to 13' AGL/1512' MSL. **Rwy 29**, terrain 189' from DER, 247' left of centerline, 1493' MSL.

PINEDALE, WY

PINEDALE/RALPH WENZ FIELD (PNA)

AMDT 2 09295 (FAA)

TAKE-OFF MINIMUMS: **Rwy 29**, std. with a min. climb of 310' per NM to 8300, or 4900-3 for climb in visual conditions.

DEPARTURE PROCEDURE: **Rwy 11**, climbing right turn to 10000 via heading 190° and BPI R-040 to BPI VOR/DME before proceeding on course. **Rwy 29**, climbing left turn to 10000 via heading 230° and BPI R-020 to BPI VOR/DME before proceeding on course or for climb in visual conditions: cross Pinedale/Ralph Wenz Field at or above 11800 before proceeding on course.

PLENTYWOOD, MT

SHER-WOOD

NOTE: **Rwy 12**, multiple bushes beginning 47' from departure end of runway, 71' left of centerline, up to 12' AGL/2251' MSL. Multiple bushes beginning 362' from departure end of runway, 514' right of centerline, up to 12' AGL/2251' MSL. **Rwy 30**, multiple bushes and road beginning 68' from departure end of runway, 75' right of centerline, up to 12' AGL/2303' MSL. Multiple bushes beginning 217' from departure end of runway, 60' left of centerline, up to 12' AGL/2296' MSL.

POCATELLO, ID

POCATELLO RGNL (PIH)

AMDT 7 09351 (FAA)

DEPARTURE PROCEDURE: use KNURL ONE DEPARTURE.

POLSON, MT

POLSON

TAKE-OFF MINIMUMS: **Rwy 18**, N/A-extremely precipitous terrain. **Rwy 36**, standard with a min. climb of 270' per NM to 8400'.

DEPARTURE PROCEDURE: **Rwy 36**, Use ANGL RNAV DEPARTURE.

NOTES: **Rwy 36**, Road 509' from departure end of runway, 2955' MSL. Trees 2.39 NM from departure end of runway, 3383' left of centerline, 100' AGL/3179 MSL. Rapidly rising precipitous terrain left and right of centerline running along southern Flathead River ridges.

POPLAR, MT

POPLAR MUNI (PO1)

ORIG 10266 (FAA)

NOTE: **Rwy 9**, trees beginning 418' from DER, 502' left of centerline, up to 40' AGL/2079' MSL. Trees beginning 1421' from DER, 272' right of centerline, up to 40' AGL/2079' MSL.

PORT ANGELES, WA

PORT ANGELES CGAS (NOW)

AMDT 4 12040 FAA

DEPARTURE PROCEDURE: **Rwy 8**, climbing left turn heading 010° to intercept CVV VOR/DME R-247 to 5400... **Rwy 26**, climbing right turn heading 010° to intercept CVV VOR/DME R-247 to 5400...

... All aircraft proceed on CVV R-247 to JIGEB INT/ CVV 12.1 DME; cross JIGEB at or above MEA/MCA for route of flight.

NOTE: **Rwy 6**, ships on waterway 1792' from DER, 16' across centerline, 80' MSL. **Rwy 26**, vehicles on roadway beginning 309' from DER, across centerline, up to 15' AGL/24' MSL. Ships on waterway 590' from DER, 316' left of centerline, 80' MSL. Ships on waterway 632' from DER, 350' right of centerline, 80' MSL.

WILLIAM R FAIRCHILD INTL

DEPARTURE PROCEDURE: **Rwys 8, 13, 26, 31**, use WATTR FIVE DEPARTURE.

31 MAY 2012 to 28 JUN 2012

31 MAY 2012 to 28 JUN 2012

12152

TAKE-OFF MINIMUMS AND (OBSTACLE) DEPARTURE PROCEDURES

TAKE-OFF MINIMUMS AND (OBSTACLE) DEPARTURE PROCEDURES

12152

PORTLAND, OR

PORTLAND INTL (PDX)

AMDT 7 10266 (FAA)

TAKE-OFF MINIMUMS: **Rwy 3**, 500-3 or std. w/ min. climb of 355' per NM to 700. **Rwy 10L**, std. w/ min. climb of 280' per NM to 2900. **Rwy 10R**, std. w/ min. climb of 265' per NM to 2900. **Rwy 21**, std. w/ min. climb of 290' per NM to 1800.

DEPARTURE PROCEDURE: **Rwy 3**, climb heading 025° to 700, then climbing left turn direct BTG VORTAC, thence... **Rwys 10L, 10R**, climb heading 099° to 500, then climbing left turn direct BTG VORTAC, thence...

Rwy 21, climb heading 205° to 500, then climbing right turn direct BTG VORTAC, thence... **Rwys 28L, 28R**, climb heading 279° to 500, then climbing right turn direct BTG VORTAC, thence...

... continue climb in BTG VORTAC holding pattern (hold NW, right turns, 149° inbound) to cross BTG VORTAC at or above MCA/MEA before proceeding on course.

NOTE: **Rwy 3**, trees, towers, vehicles on road, sign, beginning 1' from DER, on centerline, up to 173' AGL/ 463' MSL. Trees, vehicles on road, electrical system, building, beginning 1675' from DER, on centerline, up to 113' AGL/413' MSL. **Rwy 10L**, vehicles on road beginning at DER, 376' left of centerline, up to 15' AGL/ 78' MSL. Trees beginning 1201' from DER, 753' right of centerline, up to 75' AGL/95' MSL. **Rwy 10R**, pole 1996' from DER, 759' right of centerline, 54' AGL/74' MSL.

Rwy 21, trees, poles, obstruction light on DME beginning 354' from DER, 1' left of centerline, up to 100' AGL/328' MSL. Trees, poles, beginning 1098' from DER, 42' right of centerline, up to 100' AGL/329' MSL.

Rwy 28L, trees 1873' from DER, 837' left of centerline, up to 75' AGL/95' MSL. **Rwy 28R**, building, antennas, vehicles on road, beginning 130' from DER, 257' right of centerline, up to 27' AGL/58' MSL.

PORTLAND-HILLSBORO (HIO)

AMDT 6 10154 (FAA)

TAKE-OFF MINIMUMS: **Rwy 2**, std. w/ min. climb of 215' per NM to 1900 or 1200-3 for climb in visual conditions. **Rwy 31**, std. w/ min. climb of 235' per NM to 2700 or 1200-3 for climb in visual conditions.

DEPARTURE PROCEDURE: **Rwy 13**, climbing right turn direct UBG VOR/DME... **Rwy 20**, climbing left turn direct UBG VOR/DME... **Rwys 2, 31**, climbing left turn direct UBG VOR/DME, or for climb in visual conditions cross Portland-Hillsboro airport at or above 1600 then proceed direct UBG VOR/DME...

... all aircraft climb in UBG VOR/DME holding pattern (West, right turns, 108° inbound) to cross UBG VOR/DME at or above MEA/MCA for direction of flight before proceeding on course.

NOTE: **Rwy 2**, vehicle on road 247' from DER, 1' right of centerline, up to 15' AGL/220' MSL. Terrain left and right of centerline beginning at DER up to 302' MSL. **Rwy 13**, terrain left and right of centerline beginning at DER up to 296' MSL. Trees 1836' from DER, 8' left of centerline, up to 125' AGL/331' MSL. **Rwy 20**, terrain left and right of centerline beginning at DER up to 306' MSL. Trees and hangers beginning 60' from DER, 32' left of centerline, up to 93' AGL/311' MSL. Trees, antennas and buildings beginning 564' from DER, 411' right of centerline, up to 74' AGL/280' MSL. **Rwy 31**, terrain left and right of centerline beginning at DER up to 292' MSL. Trees beginning 1664' from DER, 626' right of centerline, up to 194' AGL/363' MSL.

PORTLAND, OR (CON'T)

PORTLAND-TROUTDALE

TAKE-OFF MINIMUMS: **Rwy 7**, 3600-2 or std. with a min. climb of 380' per NM to 4100. **Rwy 25**, 900-2 or std. with a min. climb of 360' per NM to 1000.

DEPARTURE PROCEDURE: **Rwy 7**, turn left. **Rwy 25**, turn right. All aircraft climb via BTG R-125 direct BTG VORTAC. Continue climb on BTG R-329 within 10 NM to cross BTG VORTAC at or above: BTG R-355 CW R-055 or R-085 CWR-115 5000; all others 2500.

POWELL, WY

POWELL MUNI (POY)

AMDT 1A 10238 (FAA)

TAKE-OFF MINIMUMS: **Rwys 3, 16, 21, 34**, NA.

DEPARTURE PROCEDURE: **Rwy 13**, turn right. **Rwy 31**, turn left. All aircraft climb direct COD VOR/DME. Aircraft departing COD R-350 CW R-170 climb on course. All others continue climb in COD VOR/DME holding pattern (N, left turns, 189° inbound) to cross COD VOR/DME at or above 9400.

NOTE: **Rwy 13**, terrain beginning 564' from DER, 362' right of centerline, up to 5122' MSL. Windsock 12' from DER, 287' right of centerline, up to 13' AGL/5104' MSL. Road 414' from DER, 53' right of centerline, up to 15' AGL/5113' MSL. **Rwy 31**, windsock 5' from DER, 298' right of centerline, up to 8' AGL/5002' MSL.

PRINEVILLE, OR

PRINEVILLE (S39)

AMDT 1 08213 (FAA)

TAKE-OFF MINIMUMS: **Rwy 10**, std. w/ min. climb of 350 feet per NM to 6500, or 2400-3 for climb in visual conditions. **Rwy 15**, std. w/ min. climb of 470' per NM to 6200, or 2400-3 for climb in visual conditions. **Rwy 28**, std. w/ min. climb of 450' per NM to 6700, or 2400-3 for climb in visual conditions. **Rwy 33**, std. w/ min. climb of 380' per NM to 6700, or 2400-3 for climb in visual conditions.

DEPARTURE PROCEDURE: **Rwy 10**, climb heading 102° to 6500 before proceeding on course or for climb in visual conditions cross Prineville Muni airport at or above 5600 before proceeding on course. **Rwy 15**, climb heading 154° to 6200 before proceeding on course or for climb in visual conditions cross Prineville Muni airport at or above 5600 before proceeding on course. **Rwy 28**, climb heading 282° to 6700 before proceeding on course or for climb in visual conditions cross Prineville Muni airport at or above 5600 before proceeding on course. **Rwy 33**, climb heading 334° to 6700 before proceeding on course or for climb in visual conditions cross Prineville Muni airport at or above 5600 before proceeding on course.

NOTE: **Rwy 10**, trees beginning 2693' from departure end of runway, 545' right of centerline, up to 100' AGL/3339' MSL.

Rwy 15, trees beginning 1129' from departure end of runway, 697' right of centerline, up to 100' AGL/3319' MSL. **Rwy 28**, trees beginning 1803' from departure end of runway, 74' right of centerline, up to 100' AGL/3319' MSL. **Rwy 33**, trees beginning 2636' from departure end of runway, 379' right of centerline, up to 100' AGL/3319' MSL.

31 MAY 2012 to 28 JUN 2012

31 MAY 2012 to 28 JUN 2012

12152

TAKE-OFF MINIMUMS AND (OBSTACLE) DEPARTURE PROCEDURES

NW-1

TAKE-OFF MINIMUMS AND (OBSTACLE) DEPARTURE PROCEDURES

12152

PULLMAN-MOSCOW, WA

PULLMAN-MOSCOW RGNL

TAKE-OFF MINIMUMS: **Rwy 5**, 300-1½ with a min. climb of 278' per NM to 4400, or 4600-3 for climb in visual conditions. **Rwy 23**, 300-1 or std. with a min. climb of 361' per NM to 4700.

DEPARTURE PROCEDURE: **Rwy 5**, climbing left turn direct PUV VOR/DME, cross PUV VOR/DME at or above 4700, continue climb in PUV VOR/DME holding pattern (SW, left turn, 032° inbound) to cross PUV VOR/DME at or above MEA for direction of flight, or for climb in visual conditions; cross Pullman-Moscow Rgnl at or above 4500. **Rwy 23**, climbing left turn via PUV VOR/DME R-021, cross PUV VOR/DME at or above 4700, continue climb in PUV VOR/DME holding pattern (SW, left turn, 032° inbound) to cross PUV VOR/DME at or above MEA for direction of flight.

NOTE: **Rwy 5**, multiple trees and terrain left and right of centerline, beginning 614' from departure end of runway, 424' right of centerline up to 50' AGL/2677' MSL. Terrain 3503' from departure end of runway, 770' left of centerline, 50' AGL/2608' MSL. **Rwy 23**, multiple trees, terrain, fences, poles, and tanks beginning 669' from departure end of runway, 412' right of centerline, up to 52' AGL/2769' MSL.

PUYALLUP, WA

PIERCE COUNTY-THUN FIELD (PLU)

AMDT 1A 09071 (FAA)

TAKE-OFF MINIMUMS: **Rwy 16, 34**, 300-1.

DEPARTURE PROCEDURE: **Rwy 16**, climbing right turn. **Rwy 34**, climb runway heading. All aircraft climb via SEA R-158 to COTNY INT/SEA 18.1 DME. Continue in COTNY holding pattern (Hold S, left turns, 338° inbound) to depart COTNY at or above: 001° CW 090°/3500, 090°/3500, 091° CW 120°/10,400, 121° CW 170°/2700, 171° CW 360°/1500.

NOTE: **Rwy 16**, light pole 511' from DER, 567' right of centerline, 40' AGL/552' MSL. Multiple poles on building beginning 187' from DER, 416' left of centerline, up to 575' MSL. Multiple trees beginning 363' from DER, 656' left of centerline to 540' right of centerline, up to 662' MSL. Vehicles on road beginning 1149' from DER, 512' right of centerline, up to 15' AGL/582' MSL. Terrain beginning 1293' from DER, 529' left of centerline to 352' right of centerline, up to 581' MSL. Pipe 1520' from DER, 303' left of centerline, 574' MSL. **Rwy 34**, multiple trees beginning 58' from DER, 591' left of centerline to 1029' right of centerline, up to 694' MSL. Flagpole 1155' from DER, 464' left of centerline, 578' MSL. Building 564' from DER, 410' left of centerline, 555' MSL.

RAWLINS, WY

RAWLINS MUNI/HARVEY FIELD

TAKE-OFF MINIMUMS: **Rwy 4**, 600-2 or std. with a min. climb of 440' per NM to 7500. **Rwy 22**, 1500-2 or std. with a min climb of 365' per NM to 8700. **Rwys 10, 28**, NA.

DEPARTURE PROCEDURE: **Rwy 4**, turn right. **Rwy 22**, turn left. Climb to 10000 via RWL R-200 and CKWR-080 to CKW VOR/DME then via assigned route. Aircraft departing eastbound V4 or V6 climb via RWL R-200 to assigned route then climb on course.

REDMOND, OR

ROBERTS FIELD (RDM)

AMDT 5 09183 (FAA)

TAKE-OFF MINIMUMS: **Rwy 22**, std. w/ min. climb of 269' per NM to 4700. **Rwy 28**, std. w/ min. climb of 276' per NM to 4800.

DEPARTURE PROCEDURE: **Rwy 4**, climbing left turn via heading 265° and DSD R-047 to DSD VORTAC, climb in DSD VORTAC holding pattern (hold North, right turn, 168° inbound) to cross DSD VORTAC at or above MEA for route of flight before proceeding on course. **Rwy 10**, climbing right turn via heading 240° and DSD R-090 to DSD VORTAC, climb in DSD VORTAC holding pattern (hold North, right turn, 168° inbound) to cross DSD VORTAC at or above MEA for route of flight before proceeding on course. **Rwy 22**, climb heading 222° and DSD R-090 to DSD VORTAC, climb in DSD VORTAC holding pattern (hold North, right turn, 168° inbound) to cross DSD VORTAC at or above MEA for route of flight before proceeding on course. **Rwy 28**, climbing left turn via heading 275° and DSD R-045 to DSD VORTAC, climb in DSD VORTAC holding pattern (hold North, right turn, 168° inbound) to cross DSD VORTAC at or above MEA for route of flight before proceeding on course.

NOTE: **Rwy 28**, numerous trees beginning 1' from DER, 356' right of centerline, 12' AGL/3079' MSL. Tree 364' from DER, 448' left of centerline, 15' AGL/3054' MSL.

RENTON, WA

RENTON MUNI (RNT)

AMDT 8 11349 (FAA)

TAKE-OFF MINIMUMS: **Rwy 16**, std. w/ min. climb of 405' per NM to 2000. **Rwy 34**, std. w/ min. climb of 315' per NM to 2700.

DEPARTURE PROCEDURE: **Rwy 16**, climb heading 157° to 3000, then climbing right turn to intercept SEA R-180 to SEA VORTAC, thence...

Rwy 34, climb heading 337° to 3000, then climbing left turn to intercept SEA R-180 to SEA VORTAC, thence...
...Climb in holding pattern (East, left turns, 290° inbound) to cross SEA VORTAC at or above MEA/MCA for route of flight.

NOTE: **Rwy 16**, sign 40' from DER, 391' right of centerline, 17' AGL/49' MSL. Blast shield 185' from DER, 4' left of centerline, 17' AGL/49' MSL. Light poles left and right of centerline, beginning 267' from DER, up to 39' AGL/71' MSL. Trees beginning 947' from DER, 407' right of centerline, up to 82' AGL/114' MSL. Tree 1.2 NM from DER, 486' right of centerline, 90' AGL/232' MSL. Transmission towers beginning 1.4 NM from DER, 2119' left of centerline, up to 118' AGL/453' MSL. Trees left and right of centerline beginning 1.5 NM from DER, up to 108' AGL/334' MSL. Trees beginning 1.7 NM from DER, 3021' left of centerline, up to 100' AGL/574' MSL. **Rwy 34**, wood piling 75' from DER, 176' right of centerline, 2' AGL/26' MSL. Tree 1.6 NM from DER, 1437' left of centerline, 130' AGL/327' MSL. Trees beginning 1.8 NM from DER, 155' left of centerline, up to 128' AGL/485' MSL. Trees beginning 2 NM from DER, 768' right of centerline, up to 195' AGL/459' MSL.

31 MAY 2012 to 28 JUN 2012

31 MAY 2012 to 28 JUN 2012

12152

TAKE-OFF MINIMUMS AND (OBSTACLE) DEPARTURE PROCEDURES

TAKE-OFF MINIMUMS AND (OBSTACLE) DEPARTURE PROCEDURES

12152

REXBURG, ID

REXBURG-MADISON COUNTY

DEPARTURE PROCEDURE: **Rwy 17**, climbing right turn. **Rwy 35**, climbing left turn. **All aircraft** climb via IDA VOR/DME R-015 to RIGBY Int to MEA for route of flight before proceeding on course.

NOTE: **Rwy 17**, 100' AGL trees 125' from departure end of runway, 350' left of centerline. **Rwy 35**, 100' AGL trees 350' from departure end of runway, 450' right of centerline. 100' AGL trees 750' from departure end of runway, 500' left of centerline.

RICHLAND, WA

RICHLAND (RLD)

AMDT 8 10154 (FAA)

TAKE-OFF MINIMUMS: **Rwys 1, 8**, std. w/ min. climb of 310' per NM to 5000. **Rwy 19**, std. w/ min. climb of 480' per NM to 5000. **Rwy 26**, std. w/ min. climb of 350' per NM to 5000.

DEPARTURE PROCEDURE: **Rwys 1, 8**, climbing left turn heading 220° and PSC R-269 to 6000 to PAPPS INT / PSC 32.72 DME before proceeding on course. **Rwy 19**, climbing right turn heading 310° and PSC R-269 to 6000 to PAPPS INT / PSC 32.72 DME before proceeding on course. **Rwy 26**, climb heading 310° and PSC R-269 to 6000 to PAPPS INT / PSC 32.72 DME before proceeding on course.

NOTE: **Rwy 1**, crane 4957' from DER, 1271' right of centerline, up to 120' AGL/520' MSL. Poles beginning 752' from DER, 446' right of centerline, up to 20' AGL/416' MSL. Trees beginning 43' from DER, 102' left of centerline, up to 25' AGL/424' MSL. Multiple trees 184' from DER, 162' right of centerline, up to 25' AGL/424' MSL. **Rwy 8**, railroad beginning 181' from DER, left to right of centerline, up to 23' AGL/412' MSL. Sign 23' from DER, 122' right of centerline, up to 4' AGL/391' MSL. Trees beginning 1142' from DER, 12' right of centerline, up to 25' AGL/454' MSL. Trees beginning 2240' from DER, 94' left of centerline, up to 25' AGL/456' MSL. **Rwy 19**, bushes beginning 22' from DER, 297' left of centerline, up to 7' AGL/401' MSL. Trees beginning 323' from DER, 478' right of centerline, up to 25' AGL/424' MSL. Trees beginning 665' from DER, 399' left of centerline, up to 25' AGL/472' MSL. **Rwy 26**, antenna 310' from DER, 444' right of centerline, up to 7' AGL/408' MSL. Fence 458' from DER, 360' left of centerline, up to 25' AGL/425' MSL. Fence 456' from DER, 408' right of centerline, up to 25' AGL/410' MSL. Post 398' from DER, 255' right of centerline, up to 9' AGL/409' MSL. Bush 755' from DER, 257' right of centerline, up to 17' AGL/417' MSL. Ground 480' from DER, 488' right of centerline, up to 421' MSL. Trees beginning 174' from DER, 231' right of centerline, up to 25' AGL/425' MSL. Trees beginning 184' from DER, 210' left of centerline, up to 25' AGL/457' MSL.

RIVERTON, WY

RIVERTON RGNL (RIW)

AMDT 1 10042 (FAA)

DEPARTURE PROCEDURE: **Rwys 1, 10, 19, 28**, climbing right turn direct RIW VOR/DME. **All Aircraft** climb in RIW holding pattern (hold East, right turns, 287° inbound) to MEA for direction of flight.

NOTES: **Rwy 1**, sage brush beginning 35' from DER, left and right of centerline, up to 3' AGL/5499' MSL. **Rwy 10**, sage brush beginning 20' from DER, left and right of centerline, up to 3' AGL/5466' MSL. **Rwy 19**, sage brush beginning 49' from DER, 171' right of centerline, up to 3' AGL/5479' MSL. Windstocks beginning 154' from DER, 268' right of centerline, up to 28' AGL/5468' MSL. **Rwy 28**, sage brush, tower, and pole beginning 54' from DER, 154' right of centerline, up to 59' AGL/5679' MSL. Sage brush, fence, and poles beginning 132' from DER, 27' left of centerline, up to 67' AGL/5647' MSL.

ROCK SPRINGS, WY

ROCK SPRINGS-SWEETWATER COUNTY (RKS)

AMDT 6 10098 (FAA)

DEPARTURE PROCEDURE: **Rwy 3**, climb heading 032° to 8000 then climbing left turn direct OCS VOR/DME, continue climb in OCS VOR/DME holding pattern (hold East, right turns, 260° inbound) to cross OCS VOR/DME at or above MEA for route of flight. **Rwy 9**, climb heading 090° to 8200 then climbing left turn direct OCS VOR/DME, continue climb in OCS VOR/DME holding pattern (hold East, right turns, 260° inbound) to cross OCS VOR/DME at or above MEA for route of flight. **Rwy 21**, climb heading 212° to 8400, then climbing right turn direct OCS VOR/DME, continue climb in OCS VOR/DME holding pattern (hold East, right turns, 260° inbound) to cross OCS VOR/DME at or above MEA for route of flight. **Rwy 27**, climb heading 270° to 7900, then climbing right turn via OCS R-291 to OCS VOR/DME, continue climb in OCS VOR/DME holding pattern (hold East, right turns, 260° inbound) to cross OCS VOR/DME at or above MEA for route of flight.

NOTE: **Rwy 3**, vehicle on road beginning 22' from DER, 120' left of centerline, up to 20' AGL/6760' MSL. bushes beginning 178' from DER, 517' right of centerline, up to 15' AGL/6755' MSL. **Rwy 21**, bush 53' from DER, 221' left of centerline, 15' AGL/6737' MSL.

RONAN, MT

RONAN (7S0)

ORIG 02925 (FAA)

TAKE-OFF MINIMUMS: **Rwy 16**, std. w/ min. climb of 260' per NM to 9900 or 6100-3 for climb in visual conditions. **Rwy 34**, std. w/ min. climb of 250' per NM to 9900 or 6100-3 in visual conditions.

DEPARTURE PROCEDURE: **Rwy 16**, climb to 8800 on a heading between 177° CW to 336° from DER or for climb in visual conditions, cross Ronan airport at or above 9000 before proceeding on course. **Rwy 34**, climb to 8800 on a heading between 336° CW to 177° from DER or for climb in visual conditions, cross Ronan airport at or above 9000 before proceeding on course.

NOTE: **Rwy 16**, tree 485' from DER, 386' left of centerline 50' AGL/3149' MSL. **Rwy 34**, building 158' from DER, 370' left of centerline 40' AGL/3130' MSL. Tree 1358' from DER, 556' left of centerline 50' AGL/3149' MSL.

12152

TAKE-OFF MINIMUMS AND (OBSTACLE) DEPARTURE PROCEDURES

TAKE-OFF MINIMUMS AND (OBSTACLE) DEPARTURE PROCEDURES

12152

ROSEBURG, OR

ROSEBURG RGNL (RBG)
AMDT 6 10322 (FAA)

TAKE-OFF MINIMUMS: **Rwy 16**, 800-2 w/min. climb of 460' per NM to 4500, or 2700-3 for climb in visual conditions. **Rwy 34**, 900-2 w/min. climb of 400' per NM to 4000, or 2700-3 for climb in visual conditions.

DEPARTURE PROCEDURE: **Rwy 16**, climb direct RBG VOR/DME, continue climb in RBG VOR/DME holding pattern (Hold N, right turns, 163° inbound) to cross RBG VOR/DME at or above MEA/MCA for route of flight, or for climb in visual conditions cross Roseburg RGNL Airport southbound at or above 3100 then direct RBG VOR/DME, continue climb in RBG VOR/DME holding pattern (Hold N, right turns, 163° inbound) to cross RBG VOR/DME at or above MEA/MCA for route of flight. **Rwy 34**, climb heading 342° to 2900 before proceeding on course, or for climb in visual conditions cross Roseburg RGNL Airport southbound at or above 3100 then direct RBG VOR/DME, continue climb in RBG VOR/DME holding pattern (Hold N, right turns, 163° inbound) to cross RBG VOR/DME at or above MEA/MCA for route of flight.

NOTE: **Rwy 16**, pole and trees beginning 37' from DER, 186' right of centerline, up to 73' AGL/593' MSL. Pole and trees, beginning 52' from DER, 1' left of centerline, up to 100' AGL/559' MSL. Vehicles on road 266' from DER, 251' right of centerline, up to 15' AGL/513' MSL. **Rwy 34**, trees and bushes beginning 16' from DER, 48' right and left of centerline up to 100' AGL/1339' MSL. Ground 1065' from DER, 298' right of centerline, 608' MSL. Signs, poles and obstacle lights on poles beginning 640' from DER, 55' left of centerline, up to 60' AGL/894' MSL.

SALEM, OR

MCNARY FIELD (SLE)
AMDT 8 11293 (FAA)

TAKE-OFF MINIMUMS: **Rwy 13**, std. w/min. climb of 260' per NM to 1100 or 1400-2½ for climb in visual conditions. **Rwy 16**, std. w/min. climb of 570' per NM to 1100 or 400-2½ w/min. climb of 260' per NM to 1100 or 1400-2½ for climb in visual conditions.

DEPARTURE PROCEDURE: **Rwy 13**, climb direct TURNO LOM (ADF required). Westbound aircraft, proceed on course. Eastbound aircraft continue climb in holding (hold SE, left turns, 313° inbound) to cross TURNO LOM/INT at or above 2500' before proceeding on course, or for climb in visual conditions cross McNary Field Airport at or above 1500 before proceeding on course. When executing VCOA, notify ATC prior to departure. **Rwy 16**, climbing left turn direct TURNO LOM (ADF required). Westbound aircraft, proceed on course. Eastbound aircraft continue climb in holding (hold SE, left turns, 313° inbound) to cross TURNO LOM/INT at or above 2500 before proceeding on course, or for climb in visual conditions cross McNary Field Airport at or above 1500 before proceeding on course. When executing VCOA, notify ATC prior to departure. **Rwys 31, 34**, climbing right turn direct TURNO LOM (ADF required). Westbound aircraft proceed on course. Eastbound aircraft continue climb in holding (hold SE, left turns, 313° inbound) to cross TURNO LOM/INT at or above 2500 before proceeding on course.

NOTE: **Rwy 13**, vehicles on road beginning 381' from DER, 153' right of centerline, up to 15' AGL/225' MSL. Trees beginning 1515' from DER, 590' left of centerline, up to 100' AGL/320' MSL. Trees beginning 3712' from DER, 952' right of centerline, up to 80' AGL/372' MSL. **Rwy 16**, trees beginning 554' from DER, 66' right of centerline, up to 75' AGL/569' MSL. Trees beginning 1202' DER, 302' left of centerline, up to 95' AGL/534' MSL. Pole beginning 750' from DER, 226' right of centerline, 21' AGL/231' MSL. **Rwy 31**, trees beginning 1220' from DER, 480' left of centerline, up to 88' AGL/268' MSL. Tree beginning 2988' from DER, 277' right of centerline, 90' AGL/270' MSL. **Rwy 34**, vehicle on road beginning 469' from DER, 252' right of centerline, 15' AGL/208' MSL. Trees beginning 1691' from DER, 229' right of centerline, up to 98' AGL/282' MSL. Tree 3238' from DER, 330' left of centerline, 98' AGL/288' MSL.

SALMON, ID

LEMHI COUNTY

TAKE-OFF MINIMUMS: **Rwy 17**, NA. **Rwy 35**, 4300-5 or std. with a min. climb of 390' per NM to 8000.

DEPARTURE PROCEDURE: **Rwy 17**, NA. **Rwy 35**, climb runway heading to 8000, then climbing left turn to 11,300 direct LKT VOR/DME before proceeding on course.

SANDPOINT, ID

SANDPOINT

TAKE-OFF MINIMUMS: **Rwy 1**, 4200-2 or std. with a min. climb of 520' per NM to 5800. **Rwy 19**, 2200-2 or std. with a min. climb of 480' per NM to 4600.

DEPARTURE PROCEDURE: **Rwy 1**, climbing right turn to COE VOR/DME via heading 200° and COE R-002. **Rwy 19**, climbing left turn to COE VOR/DME via heading 140° and COE R-002.

31 MAY 2012 to 28 JUN 2012

31 MAY 2012 to 28 JUN 2012

12152

TAKE-OFF MINIMUMS AND (OBSTACLE) DEPARTURE PROCEDURES

TAKE-OFF MINIMUMS AND (OBSTACLE) DEPARTURE PROCEDURES

12152

SARATOGA, WY

SHIVELY FIELD

TAKE-OFF MINIMUMS: **Rwy 23**, 400-1 or std. with a min. climb of 220' per NM to 7400.

DEPARTURE PROCEDURE: **Rwy 5**, turn left heading 280°. **Rwy 23**, turn right heading 340°.

All aircraft climb to 9000 via 310° bearing from SAA NDB then continue climb on course.

SCAPPOOSE, OR

SCAPPOOSE INDUSTRIAL AIRPARK

DEPARTURE PROCEDURE: **Rwy 15**, climbing left turn direct BTG VORTAC. **Rwy 33**, climbing right turn

direct BTG VORTAC. Aircraft departing BTG R-160 CW R-329 climbing left turn on course. All others climb in BTG VORTAC holding pattern (NW, right turns, 149° inbound) to cross BTG VORTAC at or above MEA/MCA for direction of flight.

NOTE: **Rwy 15**, 158' MSL tree 470' from departure end of runway, 499' right of centerline.

Rwy 33, cross departure end of runway 33 at or above 35' AGL/90' MSL. 130' MSL tree 613' from departure end of runway, 414' right of centerline; 142' MSL trees 1343' from departure end of runway, 348' right of centerline.

SCOBEY, MT

SCOBEY

TAKE-OFF MINIMUMS: **Rwy 12**, std. with a min. climb of 280' per NM to 3400.

SEATTLE, WA

BOEING FIELD/KING COUNTY INTL (BFI)

AMDT 7 12152 (FAA)

TAKE-OFF MINIMUMS: **Rwy 13L**, std. w/min. climb of 663' per NM to 500 or 500-2 ¼ with minimum climb of 250' per NM to 800, or 1100-3 for climb in visual conditions. **Rwy 13R**, std. w/min. climb of 504' per NM to 900 or 500-1 ¼ with minimum climb of 386' per NM to 900, or 1100-3 for climb in visual conditions. **Rwy 31L**, std. w/min. climb of 480' per NM to 500 or 300-1 ¼ with minimum climb of 265' per NM to 900, or 1100-3 for climb in visual conditions. **Rwy 31R**, std. w/min. climb of 371' per NM to 500 or 400-2 with minimum climb of 240' per NM to 800, or 1100-3 for climb in visual conditions.

DEPARTURE PROCEDURE: **Rwy 13L**, climbing right turn thence...

Rwy 13R, climbing right turn thence... **Rwy 31L**, climbing left turn thence... **Rwy 31R**, climbing left turn thence...

... All aircraft climb direct to SEA VORTAC, continue climb in SEA VORTAC holding pattern (hold East, left turns, 290° inbound) to cross SEA VORTAC at or above 3000. For climb in visual conditions cross Boeing Field/King County Intl Airport at or above 1000, then climb to 3000 via SEA R-344 to SEA VORTAC, continue climb in SEA VORTAC holding pattern (hold East, left turns, 290° inbound) to cross SEA VORTAC at or above 3000. When executing VCOA, notify ATC prior to departure.

NOTE: **Rwy 13L**, hangar 402' from DER, 411' left of centerline 16' AGL/32' MSL. Building 621' from DER, 526' left of centerline 16' AGL/51' MSL. Trees beginning 2475' from DER, 353' left of centerline, up to 100' AGL/362' MSL. **Rwy 13R**, train on tracks 197' from DER, 379' left of centerline, 23' AGL/48' MSL. Obstruction light on DME 552' from DER, 304' right of centerline, 16' AGL/38' MSL. Aircraft 521' from DER, 576' right of centerline, up to 64' AGL/96' MSL. Trees beginning 602' from DER, left and right of centerline, up to 100' AGL/411' MSL. Vehicles on road, 621' from DER, 657' left of centerline, up to 15' AGL/64' MSL. Obstruction light on floodlight 837' from DER, 607' right of centerline, 16' AGL/61' MSL. Obstruction light on poles, 1277' from DER, left and right of centerline, up to 16' AGL/55' MSL. Poles 1333' from DER, 251' left of centerline, up to 16' AGL/64' MSL. Power line, 1338' from DER, 294' left of centerline, 16' AGL/82' MSL. Power pole, 4014' from DER, 910' right of centerline, up to 82' AGL/134' MSL. **Rwy 31L**, airplane on taxiway 28' from DER, 327' left of centerline, up to 64' AGL/96' MSL. Obstruction light on blast fence, 249' from DER, 452' left of centerline, 16' AGL/26' MSL. Obstruction light on building 1217' from DER, 626' left of centerline, up to 16' AGL/101' MSL. Vent on building 1244' from DER, 446' right of centerline, 16' AGL/59' MSL. Trees beginning 1456' from DER, left and right of centerline, up to 100' AGL/313' MSL. Power line 2507' from DER, 439' right of centerline, 100' AGL/132' MSL. Light standard 2980' from DER, 876' right of centerline, 16' AGL/99' MSL. Floodlights, 3499' from DER, 1023' right of centerline, up to 164' AGL/199' MSL. Flagpole 3763' from DER, 1278' right of centerline, up to 131' AGL/196' MSL. Stack, 3792' from DER, 543' right of centerline, up to 16' AGL/120' MSL. **Rwy 31R**, airplane on taxiway 5' from DER, left and right of centerline, up to 64' AGL/96' MSL. Weather rod on obstruction lights, 214' from DER, 99' left of centerline, up to 16' AGL/51' MSL. Obstruction light on glideslope, 527' from DER, 101' left of centerline, up to 16' AGL/44' MSL. Hangars 854' from DER, 405' right of centerline, up to 16' AGL/57' MSL. Antenna on building 1425' from DER, 516' right of centerline, 32' AGL/81' MSL. Obstruction light on building, 2495' from DER, 1002' left of centerline, up to 16' AGL/101' MSL. Trees beginning 2734' from DER, left and right of centerline, up to 100' AGL/362' MSL. Vehicles on road beginning 469' from DER, 252' right of centerline, 15' AGL/208' MSL. Trees beginning 1691' from DER, 229' right of centerline, up to 98' AGL/282' MSL. Tree 3238' from DER, 330' left of centerline, 98' AGL/288' MSL. Flagpole 5040' from DER, 902' right of centerline, 131' AGL/196' MSL. Transmission tower 1.5 NM from DER, 2390' right of centerline, 229' AGL/350' MSL.

31 MAY 2012 to 28 JUN 2012

31 MAY 2012 to 28 JUN 2012

12152

TAKE-OFF MINIMUMS AND (OBSTACLE) DEPARTURE PROCEDURES

TAKE-OFF MINIMUMS AND (OBSTACLE) DEPARTURE PROCEDURES

12152

SEATTLE, WA (CON'T)

SEATTLE-TACOMA INTL (SEA)

AMDT 4 08325 (FAA)

DEPARTURE PROCEDURE: **Rwys 16L, 16C, 16R**, climb to 1000 via heading 163°; then climbing right turn direct SEA VORTAC, thence...

Rwys 34L, 34C, 34R, climb to 1000 via heading 343°, then climbing left turn direct SEA VORTAC, thence...

...climb in SEA VORTAC holding pattern (hold SE, left turns, 310° inbound) to MEA/MCA for route of flight.

NOTE: **Rwy 16L**, trees beginning 2908' from departure end of runway, 1064' right of centerline, up to 100' AGL/476' MSL. **Rwy 16C**, trees beginning 4477' from departure end of runway, 484' right of centerline, up to 100' AGL/507' MSL. **Rwy 16R**, trees, antenna on building and light pole beginning 488' from departure end of runway, 436' left of centerline, up to 100' AGL/507' MSL. Trees beginning 1137' from departure end of runway, 587' right of centerline, up to 100' AGL/468' MSL. **Rwy 34L**, fence 189' from departure end of runway, 401' right of centerline, up to 12' AGL/420' MSL. Trees beginning 4010' from departure end of runway, 857' left of centerline, up to 100' AGL/522' MSL.

SHELBY, MT

SHELBY

TAKE-OFF MINIMUMS: **Rwy 5**, 200-1¼ or std. w/ min. climb of 212' per NM to 3700, or alternatively, w/ std. takeoff minimums and a normal 200'/NM climb gradient, takeoff must occur no later than 1300' prior to departure end of runway.

NOTE: **Rwy 5**, fence post 320' from departure end of runway, 162' right of centerline, 12' AGL/3455' MSL, truck on road beginning 515' from departure end of runway, 632' right of centerline, 17' AGL/3498' MSL, tree 1 NM from departure end of runway, 1242' left of centerline, 75' AGL/3604' MSL. **Rwy 11**, truck on road 906' from departure end of runway, 691' left of centerline, 17' AGL/3456' MSL, tree 1697' from departure end of runway, 26' right of centerline, 75' AGL/3495' MSL, tree 1561' from departure end of runway, 322' left of centerline, 75' AGL/3514' MSL, light standard 852' from departure end of runway, 174' left of centerline, 22' AGL/3451' MSL.

SHELTON, WA

SANDERSON FIELD

TAKE-OFF MINIMUMS: **Rwy 5**, std. w/ a min. climb of 312' per NM to 4000, or 1500-2½ for a climb in visual conditions. **Rwy 23**, std. w/ a min. climb of 414' per NM to 4000, or 1500-2½ for a climb in visual conditions.

DEPARTURE PROCEDURE: **Rwy 5**, climbing right turn to intercept SEA R-230 to CARRO intersection. Or for climb in visual conditions: Cross Sanderson Field northeast bound at or above 1600, thence via SEAR-230 to cross CARRO intersection at or above 4000. **Rwy 23**, climbing left turn to intercept SEA R-230 to CARRO intersection. Or for climb in visual conditions: Cross Sanderson Field northeast bound at or above 1600, thence via SEAR-230 to cross CARRO intersection at or above 4000.

NOTE: **Rwy 5**, multiple trees beginning 550' from departure end of runway, 107' left of centerline, up to 94' AGL/366' MSL. Multiple trees beginning 130' from departure end of runway, 70' right of centerline, up to 80' AGL/352' MSL. **Rwy 23**, multiple trees beginning 52' from departure end of runway, 149' left of centerline, up to 72' AGL/330' MSL. Multiple trees beginning 886' from departure end of runway, 153' right of centerline, up to 155' AGL/486' MSL.

SHERIDAN, WY

SHERIDAN COUNTY

TAKE-OFF MINIMUMS: **Rwy 5**, 700-3 or std. w/ min. climb of 318' per NM to 5100, or...

Rwy 14, 800-3 or std. w/ min. climb of 263' per NM to 5100, or...

Rwy 23, 900-3 or std. w/ min. climb of 348' per NM to 5100, or...

... 1400/3 for climb in visual conditions. Climb in visual conditions NA at night.

DEPARTURE PROCEDURE: **Rwy 5**, climbing left turn via SHR R-106 to SHR VOR/DME, or climb in visual conditions to cross Sheridan County Airport northwest bound at or above 5300, then via SHR R-126 to SHR VOR/DME, thence...

Rwy 14, climbing left turn via heading 320° and SHR R-106 to SHR VOR/DME, or climb in visual conditions to cross Sheridan County Airport northwest bound at or above 5300, then via SHR R-126 to SHR VOR/DME, thence...

Rwy 23, climbing right turn via SHR R-153 to SHR VOR/DME, or climb in visual conditions to cross Sheridan County Airport northwest bound at or above 5300, then via SHR R-126 to SHR VOR/DME, thence...

Rwy 32, climb via heading 320° and SHR R-106 to SHR VOR/DME, thence...

... climb in holding pattern (hold northwest, left turn, 133° inbound) to cross SHR VOR/DME at or above airway MEA for route of flight.

NOTE: **Rwy 5**, multiple trees beginning 101' from departure end of runway, 188' left of centerline, up to 80' AGL/3991' MSL. **Rwy 23**, fence 1201' from departure end of runway, 10' left of centerline, 20' AGL/4060' MSL. Building 1949' from departure end of runway, 415' left of centerline, 17' AGL/4077' MSL. Tree 3337' from departure end of runway, 391' right of centerline, 43' AGL/4143' MSL. **Rwy 32**, antenna 53' from departure end of runway, 398' right of centerline, 20' AGL/4020' MSL.

31 MAY 2012 to 28 JUN 2012

31 MAY 2012 to 28 JUN 2012

12152

TAKE-OFF MINIMUMS AND (OBSTACLE) DEPARTURE PROCEDURES

TAKE-OFF MINIMUMS AND (OBSTACLE) DEPARTURE PROCEDURES

12152

SIDNEY, MT

SIDNEY-RICHLAND MUNI (SDY)

AMD T 4 10210 (FAA)

TAKE-OFF MINIMUMS: **Rwy 29**, 400-2½ or std. w/ a min. climb of 315' per NM to 2500.

NOTE: **Rwy 1**, trees beginning 86' from DER, left and right of centerline, up to 30' AGL/2072' MSL. **Rwy 19**, trees beginning 245' from DER, 302' right of centerline, up to 30' AGL/2029' MSL. Roads, 5' from DER, 298' right of centerline, up to 20' AGL/2003' MSL. Pole, 21' from DER, 298' right of centerline, up to 10' AGL/1992' MSL. **Rwy 29**, terrain left and right of centerline beginning 962' from DER, up to 2123' MSL. Poles beginning 778' from DER, left and right of centerline, up to 39' AGL/2181' MSL. Trees beginning 596' from DER, 165' right of centerline, up to 30' AGL/2026' MSL. Derrick 1452' from DER, 207' left of centerline, up to 47' AGL/2028' MSL. Road 504' from DER, 15' right of centerline, up to 17' AGL/1998' MSL.

SNOHOMISH, WA

HARVEY FIELD (S43)

AMD T 1 11237 (FAA)

TAKE-OFF MINIMUMS: **Rwys 15R, 33L**, NA-obstacles.

Rwy 15L, std. w/ min. climb of 355' per NM to 1100, or 1200-2½ for climb in visual conditions. **Rwy 33R**, std. w/ min. climb of 480' per NM to 800, or 1200-2½ for climb in visual conditions.

DEPARTURE PROCEDURE: **Rwy 15L**, climbing right turn on 344° course to WATON LOM, or for climb in visual conditions, cross Harvey Field at or above 1100 then proceed on 332° course to WATON LOM, thence...

Rwy 33R, climb on 332° course to WATON LOM, or for climb in visual conditions, cross Harvey Field at or above 1100 then proceed on 332° course to WATON LOM, thence...

... aircraft departing WATON LOM on bearings 150° CW 340° from WATON LOM climb on course. Aircraft departing WATON LOM on bearings 340° CW 150° from WATON LOM, climb in holding pattern (South, left turns, 342° inbound) to cross WATON LOM at or above 4500 before proceeding on course.

NOTE: **Rwy 15L**, fence 37' from DER, left and right of centerline, 10' AGL/32' MSL. Vehicles on roadway 44' from DER, left and right of centerline, 15' AGL/37' MSL. Tree 81' from DER, 177' right of centerline, 83' AGL/106' MSL. Trees 685' from DER, left and right of centerline, up to 48' AGL/70' MSL. **Rwy 33R**, powerline 32' from DER, left and right of centerline, 22' AGL/38' MSL. Powerline 138' from DER, left and right of centerline, 40' AGL/56' MSL. Tower 5708' from DER, 1956' right of centerline, 207' AGL/301' MSL. Tower 1 NM from DER, 2033' right of centerline, 212' AGL/264' MSL.

SPOKANE, WA

FELTS FIELD (SFF)

AMD T 5 10098 (FAA)

TAKE-OFF MINIMUMS: **Rwy 3L**, std. w/ min. climb of 450' per NM to 3600, or 2300-3 for climb in visual conditions. **Rwy 3R**, std. w/ min. climb of 410' per NM to 3700, or 2300-3 for climb in visual conditions. **Rwy 21L**, std. w/ min. climb of 375' per NM to 3200, or 2300-3 for climb in visual conditions. **Rwy 21R**, std. w/ min. climb of 375' per NM to 3200, or 2300-3 for climb in visual conditions.

DEPARTURE PROCEDURE: **Rwys 3L, 3R**, climb heading 035° to 3600, then climbing right turn heading 210° and GEG R-050 to GEG VORTAC, or for climb in visual conditions: cross Felts Field Airport at or above 4100, then via heading 165° and GEG R-050 to GEG VORTAC. Cross GEG VORTAC at or above MCA/MEA for route of flight. **Rwys 21L, 21R**, climb heading 215° to 3200, then climbing left turn heading 190° and GEG R-050 to GEG VORTAC, or for climb in visual conditions: cross Felts Field Airport at or above 4100, then via heading 165° and GEG R-050 to GEG VORTAC. Cross GEG VORTAC at or above the MCA/MEA for route of flight.

FELTS FIELD (SFF) (CON'T)

NOTE: **Rwy 3L**, trees beginning 1853' from DER, 772' right of centerline, up to 100' AGL/2037' MSL. Trees beginning 3538' from DER, 529' left of centerline, up to 100' AGL/2339' MSL. Antenna, trees and transmission poles beginning 1.5 NM from DER, 16' left of centerline, up to 100' AGL/2579' MSL. Trees beginning 2.3 NM from DER, 723' right of centerline, up to 100' AGL/2499' MSL. **Rwy 3R**, hangar, NDB, and trees beginning 92' from DER, 269' right of centerline, up to 100' AGL/2040' MSL. Trees beginning 4685' from DER, 1033' left of centerline, up to 100' AGL/2339' MSL. Antenna, trees and transmission poles beginning 1.6 NM from DER, 525' left of centerline, up to 100' AGL/2559' MSL. Trees and transmission poles beginning 2.6 NM from DER, 214' right of centerline, up to 150' AGL/2570' MSL. **Rwy 21L**, elevator, pole on building and trees beginning 315' from DER, 302' left of centerline, up to 140' AGL/2080' MSL. **Rwy 21R**, poles and trees beginning 188' from DER, 13' right of centerline, up to 100' AGL/1982' MSL. Elevator, pole, hangar, and building beginning 203' from DER, 1' left of centerline, up to 140' AGL/2080' MSL. Terrain and trees beginning 3.1 NM from DER, 4904' left of centerline, up to 100' AGL/2559' MSL.

SPOKANE INTL (GEG)

AMD T 6 10266 (FAA)

DEPARTURE PROCEDURE: **Rwy 3**, climbing left turn heading 190° and GEG R-010 to GEG VORTAC. Thence... **Rwy 7**, climbing right turn heading 255° and GEG R-075 to GEG VORTAC, thence... **Rwy 21**, climbing right turn heading 208° and GEG R-028 to GEG VORTAC. Thence... **Rwy 25**, climbing left turn heading 176° and GEG R-356 to GEG VORTAC. Thence...

... climb in GEG VORTAC holding pattern (hold Southwest, right turns, 028° inbound) to cross GEG VORTAC at or above MEA for route of flight.

NOTE: **Rwy 3**, multiple trees beginning 1089' from DER, 666' left of centerline, up to 100' AGL/2370' MSL. Tree 1524' from DER, 851' right of centerline, 100' AGL/2374' MSL.

31 MAY 2012 to 28 JUN 2012

31 MAY 2012 to 28 JUN 2012

12152

TAKE-OFF MINIMUMS AND (OBSTACLE) DEPARTURE PROCEDURES

TAKE-OFF MINIMUMS AND (OBSTACLE) DEPARTURE PROCEDURES

12152

STEVENSVILLE, MT

STEVENSVILLE

TAKE-OFF MINIMUMS: **Rwy 12**, do not exceed 210 knots until established on MSO R-163. **Rwy 30**, do not exceed 210 knots until established on MSO R-160.

DEPARTURE PROCEDURE: **Rwy 12**, climbing right turn via heading 335 and MSO R-163 to MSO VOR/DME climb in MSO VOR/DME holding pattern (southeast, right turn, 340° inbound) to 13000' before proceeding on course. **Rwy 30**, climbing right turn via heading 025° and MSO R-160 to MSO VOR/DME Climb in MSO VOR/DME holding pattern (southeast, right turn, 340° inbound) to 13000' before proceeding on course.

SUNRIVER, OR

SUNRIVER

TAKE-OFF MINIMUMS: **Rwy 18**, 300-1 or std. with a min. climb of 360' per NM to 4400. **Rwy 36**, 600-2 or std. with a min. climb of 240' per NM to 4900.

DEPARTURE PROCEDURE: **Rwy 18**, climb runway heading to 7000 then climbing left turn direct DSD VORTAC. **Rwy 36**, climb direct to DSD VORTAC. Then all aircraft climb on course.

TACOMA, WA

TACOMA NARROWS

TAKE-OFF MINIMUMS: **Rwy 35**, 400-1 or std. with a min. climb of 210' per NM to 400'.

DEPARTURE PROCEDURE: **Rwy 17**, turn right, climb via heading 230° to intercept OLM R-009 then direct OLM VORTAC. **Rwy 35**, turn left, climb via heading 270° to intercept SEA R-230 then direct CARRO INT. Continue climb in holding (SW, right turns, 047° inbound) to MEA or assigned altitude for route of flight.

THE DALLES, OR

COLUMBIA GORGE RGNL/THE DALLES MUNI (DLS)

AMDT 2A 10182 (FAA)

TAKE-OFF MINIMUMS: **Rwy 7**, 900-3 or std. with a min. climb of 330' per NM to 1200. **Rwy 12**, 1400-3 or std. with a min. climb of 500' per NM to 2000. **Rwy 25**, NA. **Rwy 30**, 2900-3 or std. with a min. climb of 500' per NM to 2700.

DEPARTURE PROCEDURE: **Rwy 7**, climbing right turn heading 120°. **Rwy 12**, climb via runway heading. **Rwy 30**, climbing left turn heading 120°. All aircraft intercept and climb southbound via LTJR-165 to 3500. Then climbing left turn direct LTJ VORTAC. Continue climb in LTJ holding pattern (E, right turns, 260° inbound) to cross LTJ VORTAC at or above MEA or MEA for route of flight.

TILLAMOOK, OR

TILLAMOOK (TMK)

AMDT 1 11181 (FAA)

TAKE-OFF MINIMUMS: **Rwys 1, 13, 19**, NA-ATC.

DEPARTURE PROCEDURE: **Rwy 31**, use FETUJ RNAV DEPARTURE.

TOLEDO, WA

ED CARLSON MEMORIAL FIELD (TDO)

ORIG 10322 (FAA)

DEPARTURE PROCEDURE: Use ATASY DEPARTURE.

TORRINGTON, WY

TORRINGTON MUNI (TOR)

ORIG 10042 (FAA)

NOTE: **Rwy 2**, terrain 30' from DER, 277' left of centerline, 4197' MSL. **Rwy 10**, multiple trees and fence beginning 71' from DER, 143' right of centerline, up to 14' AGL/4214' MSL. Terrain 14' from DER, 502' left of centerline, 4199' MSL. **Rwy 28**, terrain 133' from DER, 386' right of centerline, 4213' MSL.

TWIN FALLS, ID

JOSLIN FIELD-MAGIC VALLEY RGNL

TAKE-OFF MINIMUMS: **Rwy 12**, NA.

DEPARTURE PROCEDURE: Aircraft departing on TWF R-240 CW R-080 climb on course. All others climb runway heading 6000 then climbing turn direct TWF VORTAC. Climb in holding pattern (NW, right turns, 113° inbound) to MCA or MEA as appropriate for direction of flight.

VANCOUVER, WA

PEARSON FIELD (VUO)

AMDT 2 07354 (FAA)

TAKE-OFF MINIMUMS: **Rwy 8**, std. w/min. climb of 358' per NM to 600, or 500-3 w/min. climb of 201' per NM to 600, or 900-2½ for climb in visual conditions. **Rwy 26**, 600-3 or 900-2½ for climb in visual conditions.

DEPARTURE PROCEDURE: **Rwy 8**, climb heading 079° to 500 then climbing left turn direct BTG VORTAC, thence... or for climb in visual conditions: cross Pearson Field at or above 800 MSL then proceed on BTG VORTAC R-179 to BTG VORTAC, thence... **Rwy 26**, climb heading 259° to 700 then climbing right turn direct BTG VORTAC, thence... or for climb in visual conditions: cross Pearson Field at or above 800 MSL then proceed on BTG VORTAC R-179 to BTG VORTAC, thence...

...continue climb in BTG VORTAC holding pattern (hold northwest, right turn, 149° inbound) to cross BTG VORTAC at or above MEA/MCA for route of flight.

NOTE: **Rwy 8**, tree 1.4 NM from departure end of runway, 1283' left of centerline, 100' AGL/395' MSL. Tree 1.7 NM from departure end of runway, 701' left of centerline, 100' AGL/401' MSL. Tree 2 NM from departure end of runway, 849' left of centerline, 100' AGL/406' MSL. Tree 2.4 NM from departure end of runway, 648' left of centerline, 100' AGL/399' MSL. **Rwy 26**, bridge 2704' from departure end of runway, 587' left of centerline, 243' AGL/245' MSL. Crane 1.5 NM from departure end of runway, 2563' right of centerline, 237' AGL/267' MSL. Transmission line tower 2.5 NM from departure end of runway, 2036' right of centerline, 516' AGL/534' MSL.

WALLA WALLA, WA

WALLA WALLA RGNL

DEPARTURE PROCEDURE: **Rwys 2, 7, 20, 25, 34**, turn left.

Rwy 16, turn right. All aircraft climb to 2500 via ALW VOR/DME R-195, then climbing right turn direct ALW VOR/DME to cross ALW VOR/DME at or above MEA or MCA for route of flight.

NOTE: **Rwy 16**, antenna 365' from departure end of runway, 97' right of centerline, 1155' MSL. Terrain 1' from departure end of runway 140' left of centerline, 1145' MSL. **Rwy 20**, light 666' from departure end of runway, 640' left of centerline, 1170' MSL. **Rwy 34**, terrain 213' from departure end of runway, 230' right of centerline, 1130' MSL.

31 MAY 2012 to 28 JUN 2012

31 MAY 2012 to 28 JUN 2012

12152

TAKE-OFF MINIMUMS AND (OBSTACLE) DEPARTURE PROCEDURES



TAKE-OFF MINIMUMS AND (OBSTACLE) DEPARTURE PROCEDURES



12152

WEISER, ID

WEISER MUNI (S87)

ORIG 08269 (FAA)

TAKE-OFF MINIMUMS: **Rwy 12**, std. w/ min. climb of 310' per NM to 3900 or 2400-3 for climb in visual conditions. **Rwy 30**, std. w/ min. climb of 360' per NM to 4000 or 2400-3 for climb in visual conditions.

DEPARTURE PROCEDURE: **Rwy 12**, climb heading 121° to 3900 before proceeding on course. **Rwy 30**, climb heading 301° to 4000 before proceeding on course

...for climb in visual conditions: cross Weiser Muni airport at or above 4400 before proceeding on course.

NOTE: **Rwy 12**, tree 248' from departure end of runway, 443' right of centerline, 100' AGL/2184' MSL. **Rwy 30**, tree 1907' from departure end of runway, 769' right of centerline, 100' AGL/2174' MSL.

WENATCHEE, WA

PANGBORN MEMORIAL (EAT)

AMDT 4 12152 (FAA)

TAKE-OFF MINIMUMS: **Rwys 7, 25**, NA - Obstacles. **Rwy 12**, std. w/ min. climb of 650' per NM to 3300.

Rwy 30, std. w/ min. climb of 650' per NM to 3700.

DEPARTURE PROCEDURE: **Rwys 12, 30**, climb to 3000, then climbing left turn to intercept EAT VOR/ DME R-101 to COYYA INT, thence ...

... All aircraft continue climb in COYYA holding pattern (hold East, right turns, 281° inbound) until reaching MCA/MEA for direction of flight before proceeding on course.

NOTE: **Rwy 12**, light on building 135' from DER, 401' right of centerline, 41' AGL/1237' MSL. AG equipment 435' from DER, 576' left of centerline, 64' AGL/1260' MSL. Tree 589' from DER, 227' left of centerline, 100' AGL/1251' MSL. Multiple trees beginning 174' from DER, 484' right of centerline, up to 100' AGL/2739' MSL. **Rwy 30**, terrain left and right of centerline beginning 65' from DER, up to 1972' MSL. Tree 1203' from DER, 594' left of centerline, 90' AGL/1276' MSL. Multiple trees beginning 1376' from DER, 493' left of centerline, up to 100' AGL/1276' MSL. Tree 2392' from DER, 189' right of centerline, 100' AGL/1286' MSL. Multiple bush beginning 1.8 NM from DER, 742' right of centerline, up to 100' AGL/1666' MSL. Multiple poles beginning 1.8 NM from DER, 49' right of centerline, up to 453' AGL/1673' MSL. Transmission tower 1.9 NM from DER, 731' right of centerline, 364' AGL/1585' MSL. Multiple poles beginning 2.2 NM from DER, 279' left of centerline, up to 384' AGL/1605' MSL.

WEST YELLOWSTONE, MT

YELLOWSTONE (WYS)

AMDT 2 12040 (FAA)

DEPARTURE PROCEDURE: use TARGY DEPARTURE.

WHEATLAND, WY

PHIFER AIRFIELD

DEPARTURE PROCEDURE: **Rwy 8**, climbing left turn to 9000 via heading 030° to intercept IIP VOR/DME R-140 to JEZZY Int, thence... **Rwy 26**, climbing right turn to 9000 via heading 360° and GYZ NDB course 051° to JEZZY INT, thence...

...continue climb-in-hold (hold northwest, right turn, 140° inbound) to 9000 before proceeding on course.

NOTE: **Rwy 8**, multiple trees 512' from departure end of runway, 584' left of centerline, 100' AGL/4859' MSL. **Rwy 26**, multiple trees, buildings, poles/lights, siren, roads w/ vehicles beginning 2' from departure end of runway, on centerline, to 488' left of centerline, 100' AGL/4899' MSL. Multiple trees, buildings, poles/lights, roads w/ vehicles beginning 2' from departure end of runway, on centerline to 499' right of centerline, 100' AGL/4859' MSL.

WHIDBEY ISLAND NAS (AULT FIELD)

(KNUW) 10210

Diverse departures not authorized.

MILITARY DEPARTURE PROCEDURE: **Rwy 7**: Minimum climb of 420'/NM until 800. Climbing left turn to 2000, intercept NUW R-067, expect radar vectors to join assigned route. **Rwy 14**: Cross DER at or above 11' AGL/60' MSL. Climbing left turn to 2000, intercept NUW R-128, expect radar vectors to join assigned route. **Rwy 25**: Climb to 2000 via heading 249°; expect radar vectors to join assigned route. **Rwy 32**: Climb to 2000 via heading 317°; expect radar vectors to join assigned route. **ALL RWYS**: If vectors are not received by 10 DME of NUW TACAN, climb to 3000, intercept the NUW 11 DME ARC to join assigned route.

CIVIL DEPARTURE PROCEDURE: **Rwy 7**: Minimum climb of 410'/NM until 800. Climb to 2000 via heading 067°; expect radar vectors to join assigned route. **Rwy 14**: Cross DER at or above 11' AGL/60' MSL. Climbing left turn to 2000, via heading 128°; expect radar vectors to join assigned route. **Rwy 25**: Use published DP or climb to 2000 via heading 249°; expect radar vectors to join assigned route. **Rwy 32**: Climb to 2000 via heading 317°; expect radar vectors to join assigned route. **ALL RWYS**: If vectors are not received by 10 DME of NUW TACAN, climb to 3000, proceed direct CVV VOR/DME to join assigned route.

TAKE-OFF OBSTACLES: **Rwy 7**: Trees, 204' MSL, 3278' from DER, 1357' left of centerline; Trees, 434' MSL, 4727' from DER, 4828' left of centerline; Trees, 486' MSL, 5464' from DER, 5803' left of centerline; Trees, 279' MSL, 1.26 NM from DER, 2431' left of centerline; Trees, 397' MSL, 1.41 NM from DER, 3685' left of centerline; Trees, 525' MSL, 1.95 NM from DER, 1.17 NM left of centerline; Trees, 480' MSL, 1.99 NM from DER, 5119' right of centerline; Trees, 338' MSL, 1.46 NM from DER, 2996' right of centerline; Trees, 499' MSL, 1.6 NM from DER, 1 NM right of centerline; Trees, 512' MSL, 1.6 NM from DER, 1.11 NM left of centerline; Trees, 519' MSL, 1.96 NM from DER, 1.15 NM left of centerline; Trees, 525' MSL, 1.82 NM from DER, 1.21 NM left of centerline. **Rwy 14**: Trees, 123' MSL, 2624' from DER, 849' right of centerline; Trees, 274' MSL, 1.47 NM from DER, 2467' right of centerline; Trees, 375' MSL, 2.10 NM from DER, 1844' left of centerline.

31 MAY 2012 to 28 JUN 2012

31 MAY 2012 to 28 JUN 2012

12152



TAKE-OFF MINIMUMS AND (OBSTACLE) DEPARTURE PROCEDURES



NW-1

WORLAND, WY

WORLAND MUNI

TAKE-OFF MINIMUMS: **Rwys 4, 10, 22, 28**, NA.

Rwy 16, 300-2 or std. with a min. climb of 230' per NM to 4600.

DEPARTURE PROCEDURE: **All aircraft** climb to 5000, then direct RLY VOR/DME. Aircraft departing RLY R-061 CW R-349 climb on course. All others continue climb in RLY VOR/DME holding pattern (N, right turns, 159° inbound) to cross RLY VOR/DME at or above 7000.

YAKIMA, WAYAKIMA AIR TERMINAL/MCALLISTER
FIELD (YKM)

AMDT 5 11013 (FAA)

DEPARTURE PROCEDURE: Use ZILLA
DEPARTURE.

31 MAY 2012 to 28 JUN 2012

31 MAY 2012 to 28 JUN 2012