

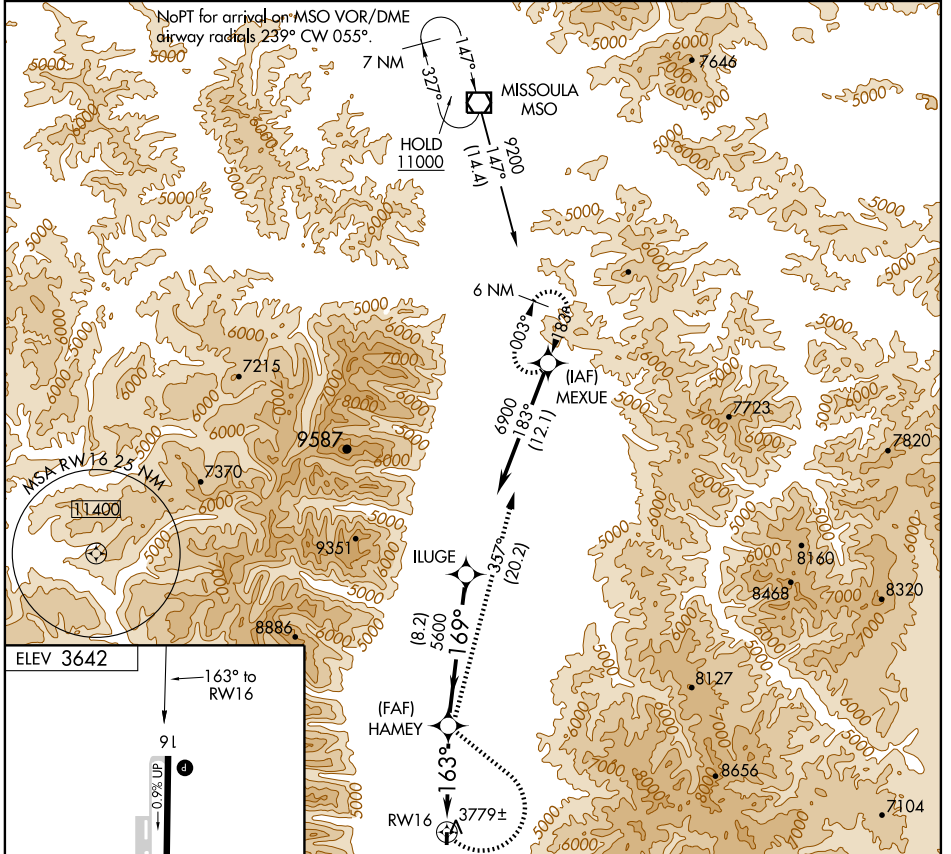
APP CRS	Rwy Idg	N/A
163°	TDZE	N/A
	Apt Elev	3642

RNAV (GPS)-A

HAMILTON/ RAVALLI COUNTY (6S5)

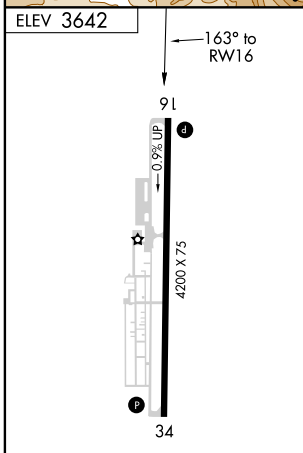
<p>▼ DME/DME RNP-0.3 NA.</p> <p>▲ NA When local altimeter setting not received, procedure NA. Procedure NA at night.</p>	<p>MISSED APPROACH: Climbing left turn to 10000 direct HAMEY WP and right turn via 357° track to MEXUE WP and hold.</p>
--	---

<p>AWOS-AV</p> <p>119.825</p>	<p>SPOKANE APP CON*</p> <p>124.9 298.95</p>	<p>SALT LAKE CITY CENTER</p> <p>133.4 285.4</p>	<p>UNICOM</p> <p>122.8 (CTAF) 0</p>
--------------------------------------	--	--	--



NW-1, 31 MAY 2012 to 28 JUN 2012

NW-1, 31 MAY 2012 to 28 JUN 2012



10000	HAMEY	MEXUE	VGSI and descent angles not coincident.	ILUGE
	tr 357°			
	HAMEY	HAMEY		
	5.7 NM	8.2 NM		
CATEGORY	A	B	C	D
CIRCLING	4660-1¼ 1018 (1100-1¼)	4660-1½ 1018 (1100-1½)		NA

APP CRS 001°	Rwy Idg TDZE Apt Elev	N/A N/A 3642
------------------------	-----------------------------	---

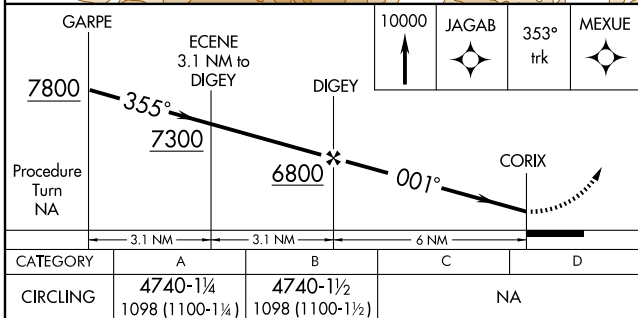
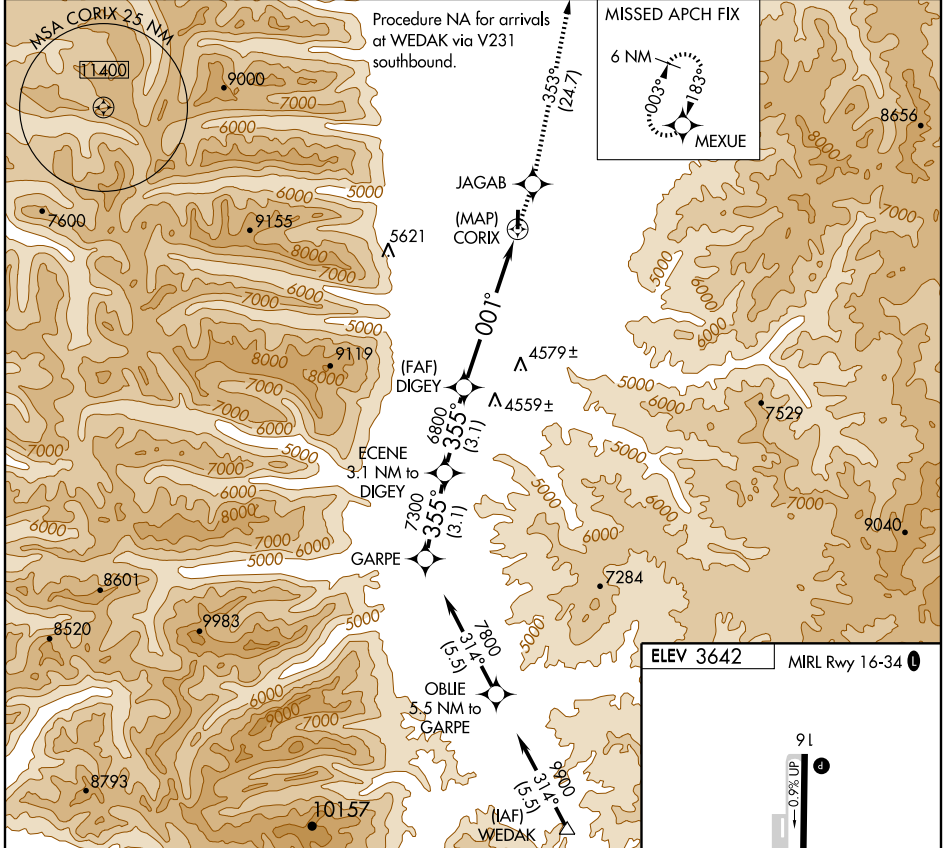
RNAV (GPS)-B

HAMILTON/ RAVALLI COUNTY (6S5)

NA DME/DME RNP-0.3 NA. When local altimeter setting not received, procedure NA. Procedure NA at night.

MISSED APPROACH: Climb to 10000 direct JAGAB WP and via 353° track to MEXUE WP and hold.

AWOS-AV 119.825	SPOKANE APP CON * 124.9 298.95	SALT LAKE CITY CENTER 132.4 338.3	UNICOM 122.8 (CTAF) 0
---------------------------	--	---	---------------------------------



ELEV 3642 MIRL Rwy 16-34

91
0.8% UP
34

4200 X 75

001° to CORIX

NW-1, 31 MAY 2012 to 28 JUN 2012

NW-1, 31 MAY 2012 to 28 JUN 2012