

RNAV (GPS) RWY 17

FAIRVIEW MUNI (6K4)

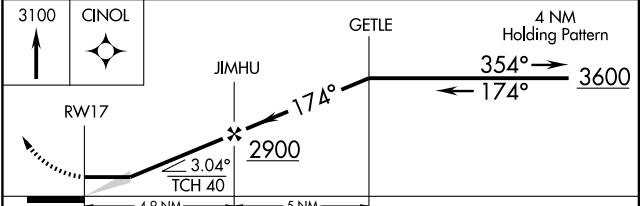
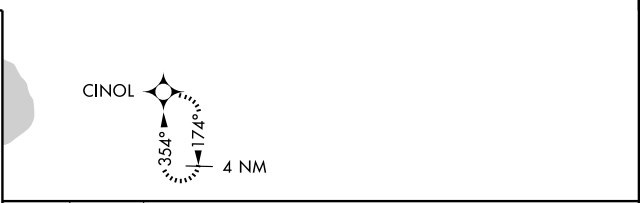
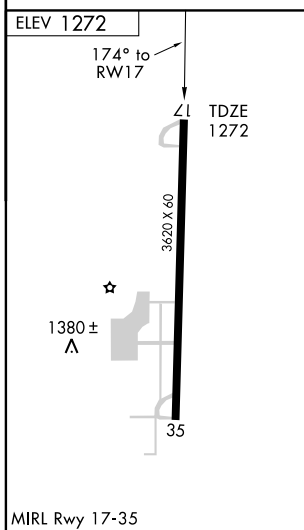
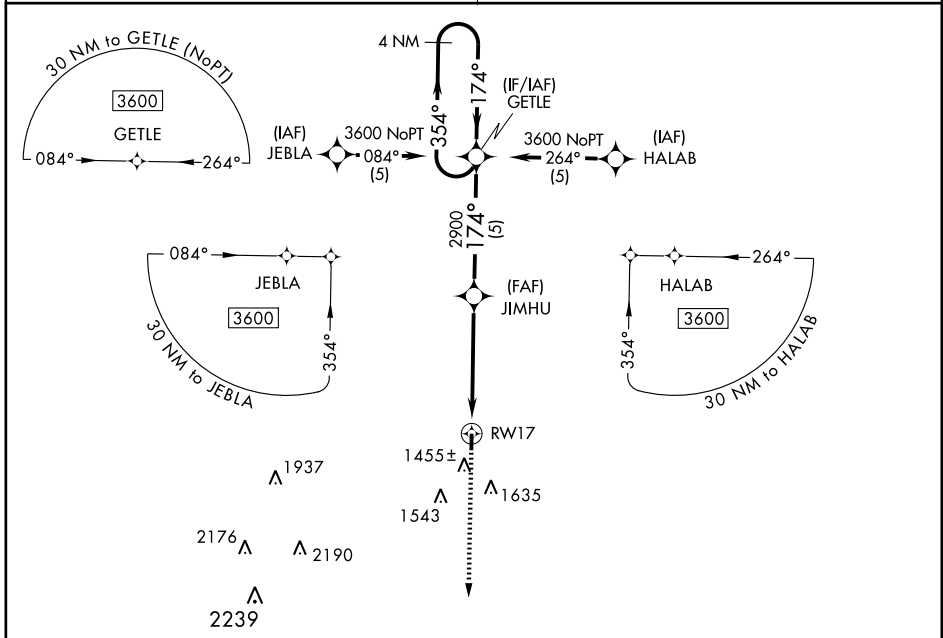
APP CRS 174°	Rwy Idg 3620 TDZE 1272 Apt Elev 1272
------------------------	---

▽ Use Vance AFB altimeter setting.
△ NA GPS or RNP-0.3 Required.
DME/DME RNP-0.3 NA.

MISSED APPROACH: Climb to 3100 direct CINOL WP and hold.

VANCE APP CON ★
126.75 244.875

UNICOM
122.8 (CTAF)



CATEGORY	A	B	C	D
LNAV MDA	1800-1	528 (600-1)	1800-1½ 528 (600-1½)	NA
CIRCLING	1880-1	608 (700-1)	2020-2¼ 748 (800-2¼)	NA

SC-1, 31 MAY 2012 to 28 JUN 2012

SC-1, 31 MAY 2012 to 28 JUN 2012