

WAAS CH 45722 W11A	APP CRS 110°	Rwy Idg THRE 823 Apt Elev 871
--	------------------------	---

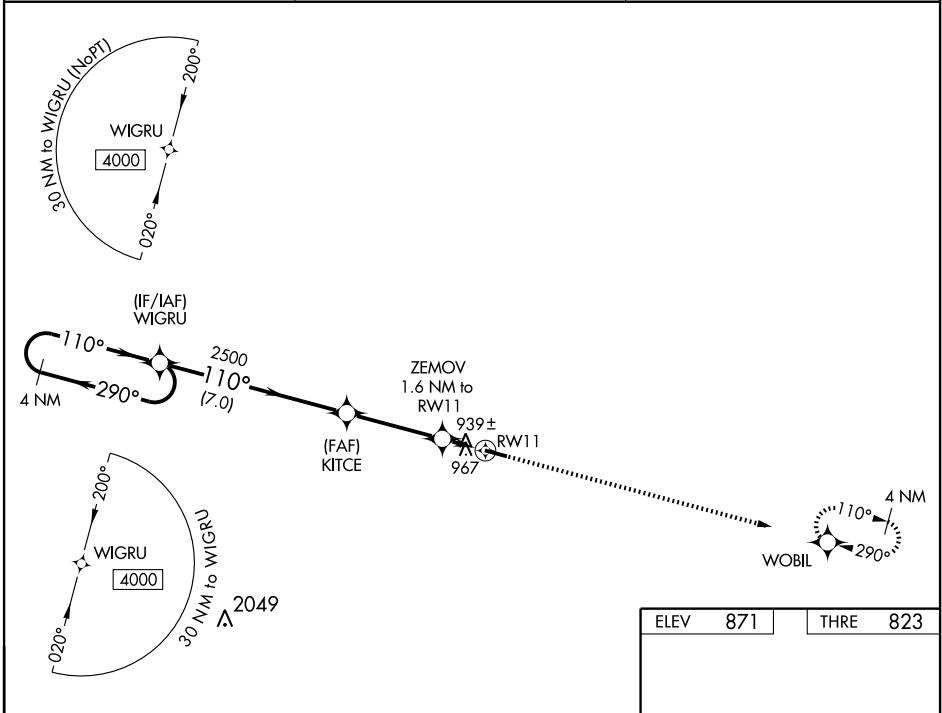
RNAV (GPS) RWY 11

SPRINGFIELD/LEBANON-SPRINGFIELD (6I2)

NA DME/DME RNP-0.3 NA. When VGSI inoperative, procedure NA at night. Visibility reduction by helicopters NA. When local altimeter setting not received, use Danville altimeter setting and increase all MDA 80 feet; increase LP Cat C and D visibility 3/8 mile and LNAV Cat C and D and Circling Cat C visibility 1/4 mile.

MISSED APPROACH: Climb to 4000 direct WOBIL and hold, continue climb-in-hold to 4000.

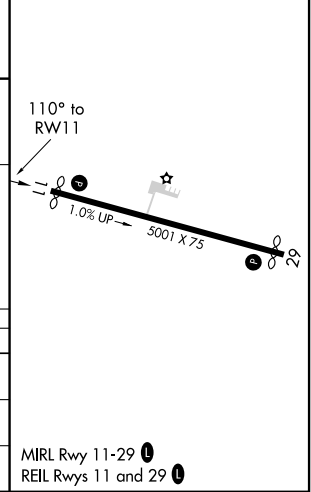
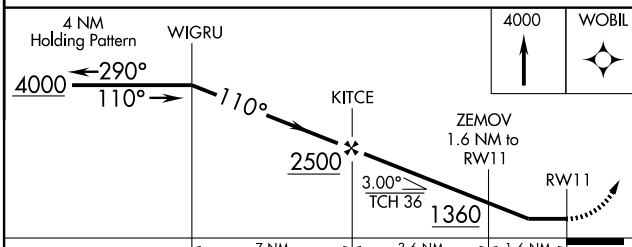
AWOS-3 119.725	INDIANAPOLIS CENTER 124.625 371.925	UNICOM 122.8 (CTAF) 0
--------------------------	---	---------------------------------



SE-1, 31 MAY 2012 to 28 JUN 2012

SE-1, 31 MAY 2012 to 28 JUN 2012

ELEV	871	THRE	823
------	-----	------	-----



CATEGORY	A	B	C	D
LP MDA	1200-1		377 (400-1)	
LNAV MDA	1220-1	397 (400-1)	1220-1 1/8	397 (400-1 1/8)
CIRCLING	1460-1	589 (600-1)	1460-1 1/2	1460-2
			589 (600-1 1/2)	589 (600-2)

MIRL Rwy 11-29 0
REIL Rwy 11 and 29 0

WAAS CH 86422 W29A	APP CRS 290°	Rwy Idg THRE 869 Apt Elev 871	4801
--	------------------------	---	-------------

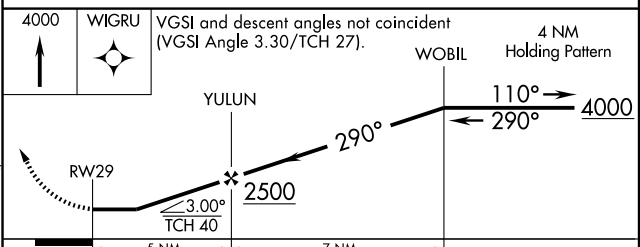
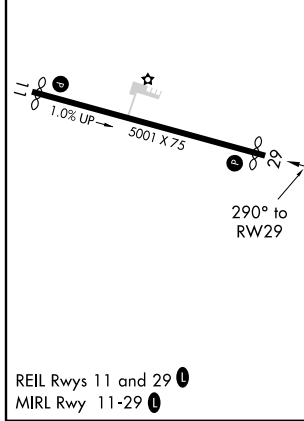
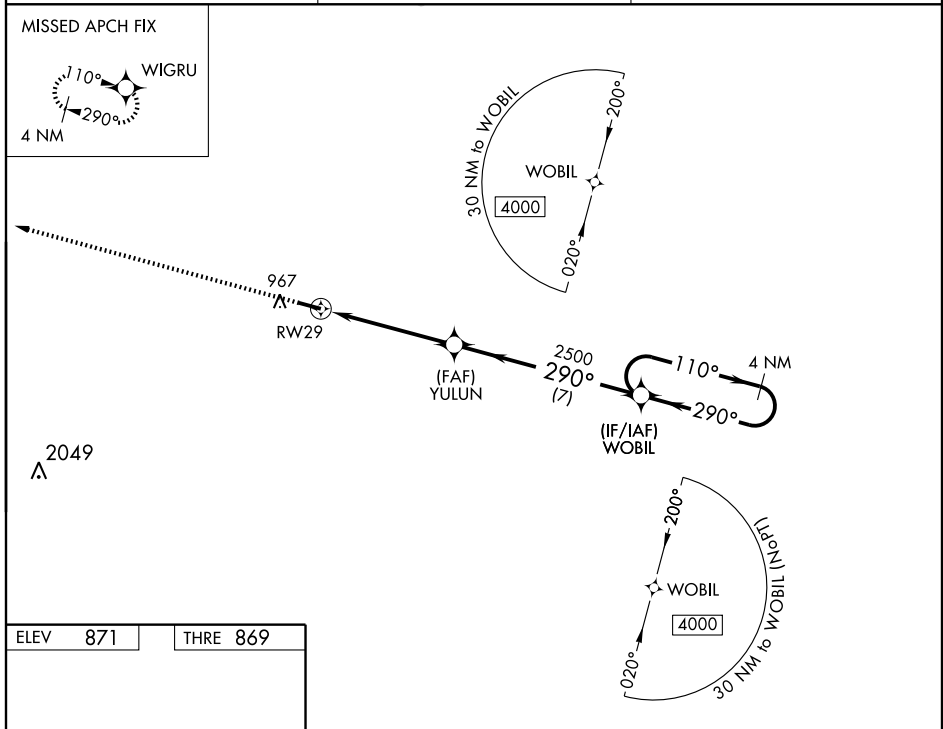
RNAV (GPS) RWY 29

SPRINGFIELD/LEBANON-SPRINGFIELD (6I2)

⚠ When VGSI inoperative, procedure NA at night. DME/DME RNP-0.3 NA.
⚠ NA Visibility reduction by helicopters NA. When local altimeter setting not received, use Danville altimeter setting and increase all MDA 80 feet; increase LP Cat C and D, LNAV Cat C and D and Circling Cat C visibility 1/8 mile.

MISSED APPROACH: Climb to 4000 direct WIGRU and hold.

AWOS-3 119.725	INDIANAPOLIS CENTER 124.625 371.925	UNICOM 122.8 (CTAF) ①
--------------------------	---	---------------------------------



CATEGORY	A	B	C	D
LP MDA	1420-1	551 (600-1)	1420-1 5/8	551 (600-1 5/8)
LNAV MDA	1420-1	551 (600-1)	1420-1 5/8	551 (600-1 5/8)
CIRCLING	1460-1	589 (600-1)	1460-1 5/8 589 (600-1 5/8)	1460-2 589 (600-2)

SE-1, 31 MAY 2012 to 28 JUN 2012

SE-1, 31 MAY 2012 to 28 JUN 2012

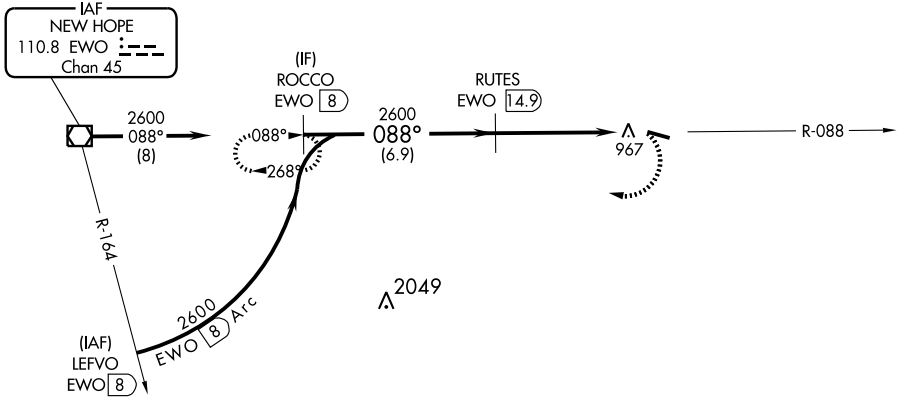
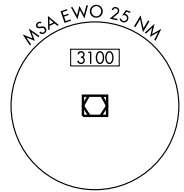
VOR/DME EWO 110.8 Chan 45	APP CRS 088°	Rwy Idg 4876 TDZE 823 Apt Elev 871
---	------------------------	---

VOR/DME RWY 11
SPRINGFIELD/LEBANON-SPRINGFIELD (6I2)

NA When local altimeter setting not received, use Danville altimeter setting and increase all MDA 80 feet and increase Cat C and D visibility ¼ mile.
When VGSi Inop, procedure NA at night. Visibility reduction by helicopters NA.

MISSED APPROACH: Climbing right turn to 4000 on EWO VOR/DME R-088 to ROCCO/EWO 8 DME and hold.

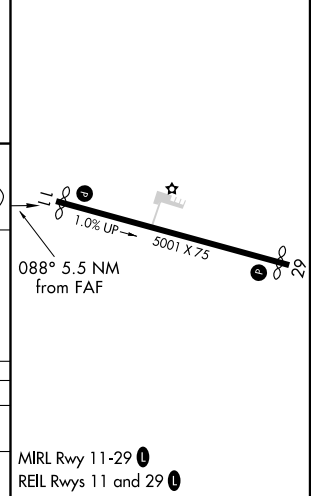
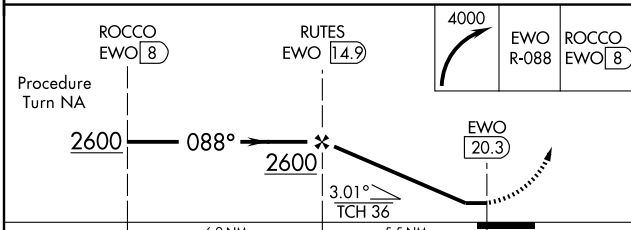
AWOS-3 119.725	INDIANAPOLIS CENTER 124.625 371.925	UNICOM 122.8 (CTAF) 0
--------------------------	---	---------------------------------



SE-1, 31 MAY 2012 to 28 JUN 2012

SE-1, 31 MAY 2012 to 28 JUN 2012

ELEV 871	THRE 823
----------	----------



CATEGORY	A	B	C	D
S-11	1300-1	477 (500-1)	1300-1 3/8	477 (500-1 3/8)
CIRCLING	1460-1 589 (600-1)	1460-1 1/4 589 (600-1 1/4)	1460-1 1/2 589 (600-1 1/2)	1460-2 589 (600-2)

MIRL Rwy 11-29 0
REIL Rws 11 and 29 0