

# RNAV (GPS) RWY 10

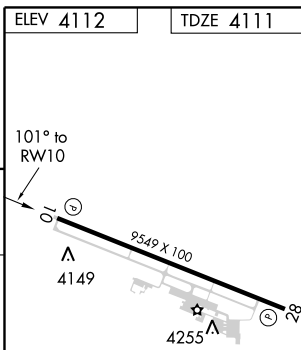
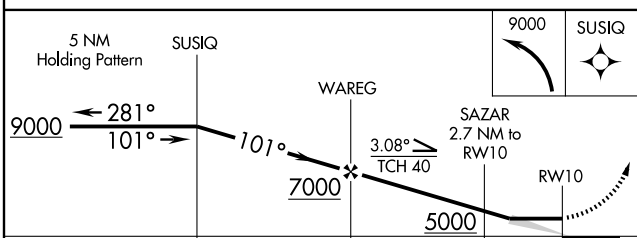
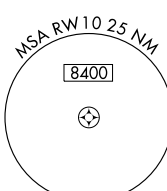
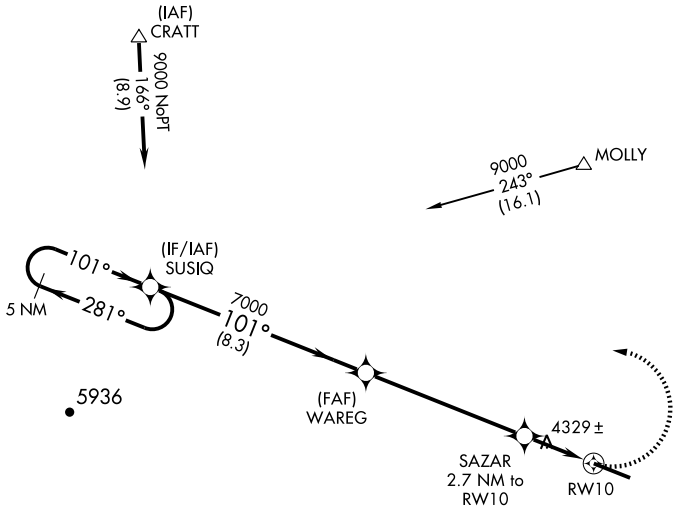
SANTA TERESA/DONA ANA COUNTY AT SANTA TERESA (5T6)

APP CRS	Rwy Idg	<b>9549</b>
<b>101°</b>	TDZE	<b>4111</b>
	Apt Elev	<b>4112</b>

**▽** DME/DME RNP-0.3 NA.  
**▲ NA** Use El Paso Intl altimeter setting; if not received, procedure NA.  
 MISSED APPROACH: Climbing left turn to 9000 direct SUSIQ and hold.

ALBUQUERQUE CENTER  
**128.2 285.5**

UNICOM  
**122.725 (CTAF)**



CATEGORY	A	B	C	D
LNNAV MDA	4700-1	589 (600-1)	4700-1½ 589 (600-1½)	4700-1¾ 589 (600-1¾)
CIRCLING	4700-1	588 (600-1)	4700-1½ 588 (600-1½)	4700-2 588 (600-2)

REIL Rwy 10 and 28  
 MIRL Rwy 10-28

SW-1, 31 MAY 2012 to 28 JUN 2012

SW-1, 31 MAY 2012 to 28 JUN 2012

# RNAV (GPS) RWY 10