

WAAS CH 50528 W17A	APP CRS 169°	Rwy Idg THRE 1382 Apt Elev 1385
--	------------------------	---

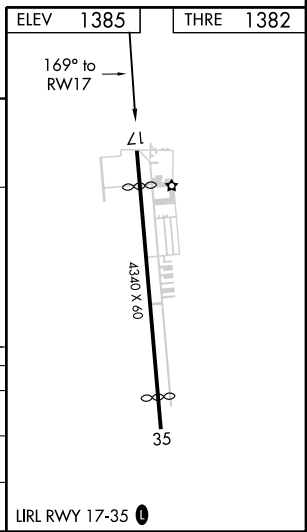
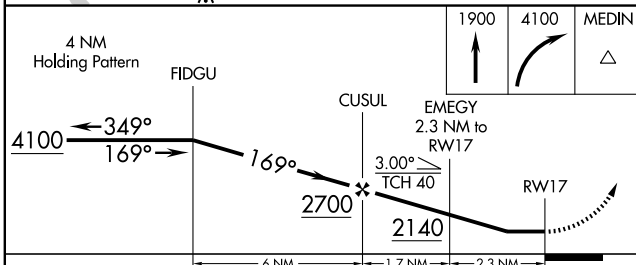
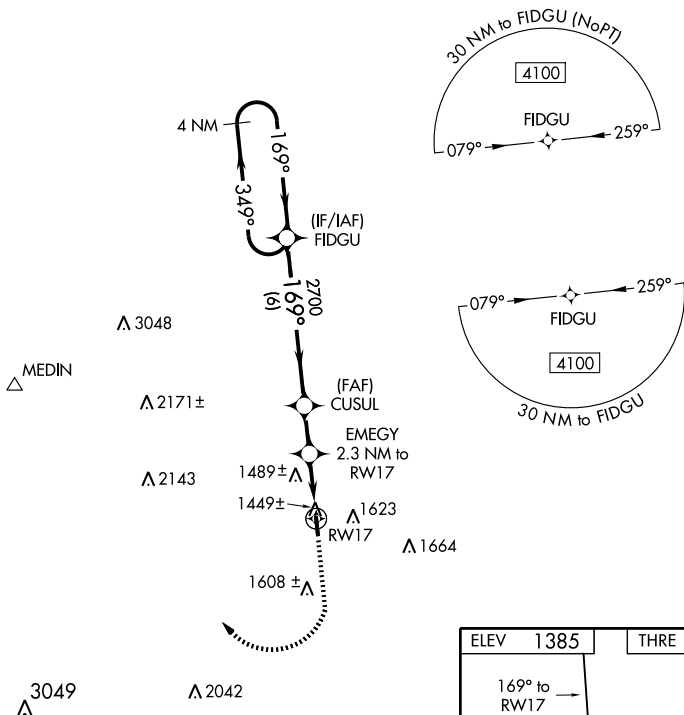
RNAV (GPS) RWY 17

SAN ANTONIO/ BOERNE STAGE FIELD (5C1)

⚠ Circling NA east of Rwy 17-35. DME/DME RNP-0.3 NA. Visibility reduction by helicopters NA. When local altimeter setting not received, use San Antonio Intl altimeter setting and increase all MDA 120 feet. Procedure NA at night.

⚠ MISSED APPROACH: Climb to 1900 then climbing right turn to 4100 direct MEDIN.

AWOS-3 118.725	SAN ANTONIO APP CON 125.1 307.0	UNICOM 123.0 (CTAF) 0
--------------------------	---	---------------------------------



CATEGORY	A	B	C	D
LP MDA	1700-1	318 (400-1)		NA
LNVA MDA	1740-1	358 (400-1)		NA
CIRCLING	1960-1 575 (600-1)	2000-1 615 (700-1)		NA

SC-3, 31 MAY 2012 to 28 JUN 2012

SC-3, 31 MAY 2012 to 28 JUN 2012

WAAS CH 69428 W35A	APP CRS 349°	Rwy Idg THRE 1378 Apt Elev 1385
--	------------------------	---

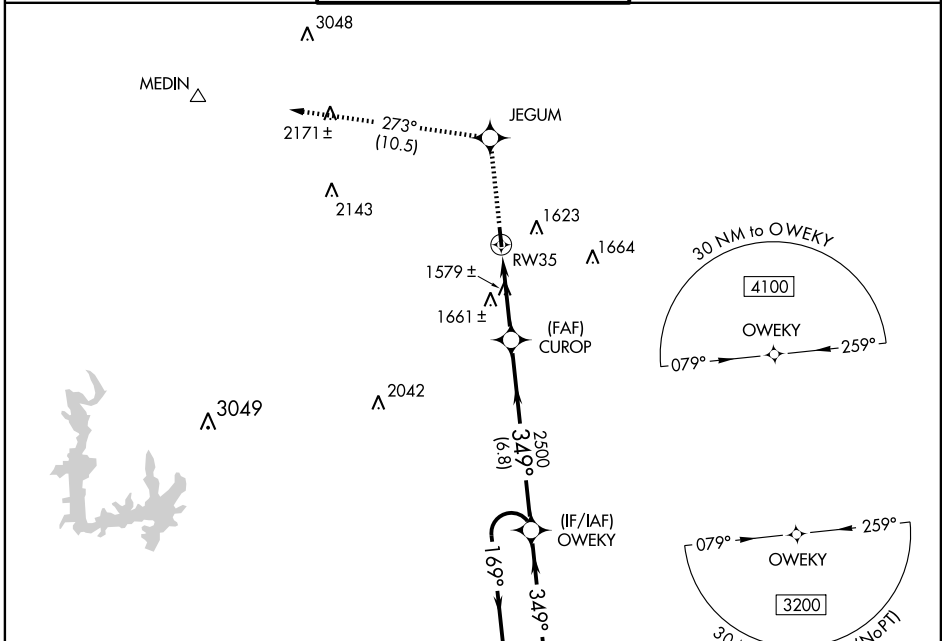
RNAV (GPS) RWY 35

SAN ANTONIO/ BOERNE STAGE FIELD (5C1)

⚠ Circling NA east of Rwy 17-35. DME/DME RNP-0.3 NA. Visibility reduction by helicopters NA. When local altimeter setting not received, use San Antonio Intl altimeter setting and increase all MDA 120 feet. Procedure NA at night.

⚠ MISSED APPROACH: Climb to 4100 direct JEGUM and on track 273° to MEDIN.

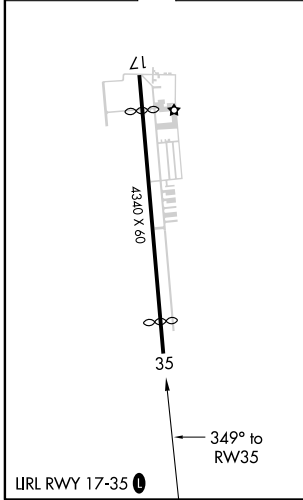
AWOS-3 118.725	SAN ANTONIO APP CON 125.1 307.0	UNICOM 123.0 (CTAF) 0
--------------------------	---	---------------------------------



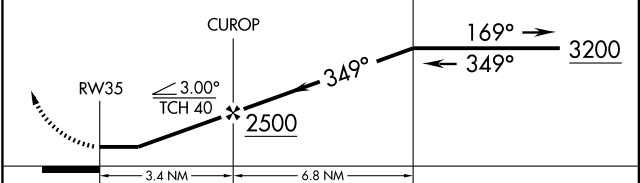
SC-3, 31 MAY 2012 to 28 JUN 2012

SC-3, 31 MAY 2012 to 28 JUN 2012

ELEV 1385	THRE 1378
-----------	-----------



4100 ↑	JEGUM ⬠	tr 273°	MEDIN △	4 NM Holding Pattern
-----------	------------	------------	------------	----------------------



CATEGORY	A	B	C	D
LP MDA	1840-1	462 (500-1)	NA	
LNAV MDA	1920-1	542 (600-1)	NA	
CIRCLING	1960-1 575 (600-1)	2000-1 615 (700-1)	NA	