

RNAV (GPS) RWY 19

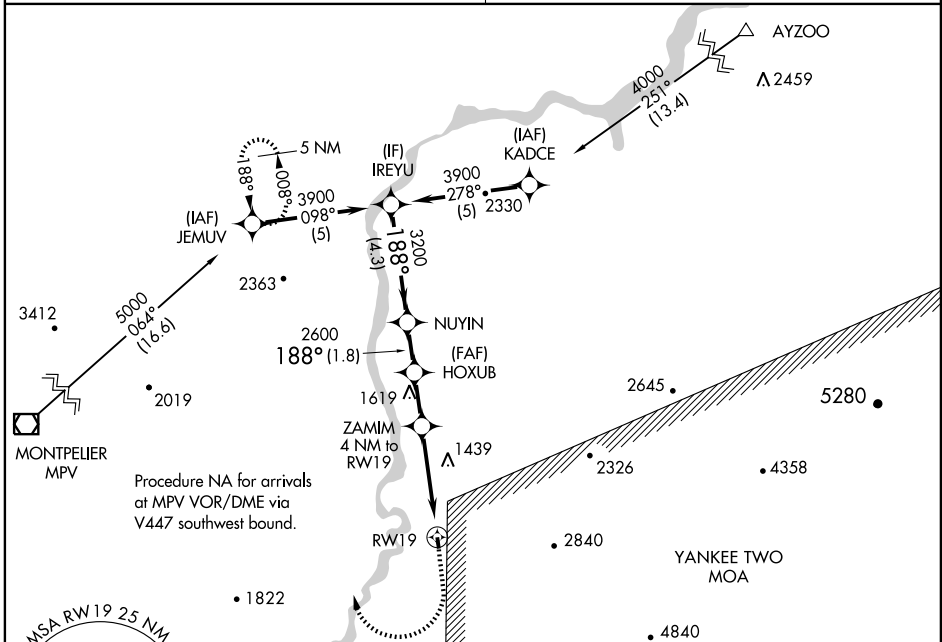
HAVERHILL/DEAN MEMORIAL (5B9)

APP CRS	Rwy Idg	2511
188°	TDZE	582
	Apt Elev	582

NA DME/DME RNP-0.3 NA. Procedure NA at night. Visibility reduction by helicopters NA. Use Lebanon altimeter setting; if not received, use Barre-Montpelier, VT altimeter setting and increase all MDAs 80 feet.

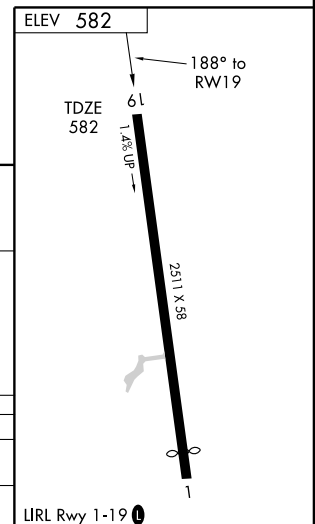
MISSED APPROACH: Climbing right turn to 4000 direct JEMUV and hold.

LEBANON ASOS 118.65	UNICOM 122.8 (CTAF) 0
-------------------------------	---------------------------------



NE-1, 31 MAY 2012 to 28 JUN 2012

NE-1, 31 MAY 2012 to 28 JUN 2012



	IREYU	NUYIN	HOXUB	ZAMIM 4 NM to RWY19	RWY19
Procedure Turn NA	3900	3200	2600	2020	4000
	← 4.3 NM →	← 1.8 NM →	← 1.9 NM →	← 4 NM →	

CATEGORY	A	B	C	D
LNAV MDA	1780-1¼ 1198 (1200-1¼)	1780-1½ 1198 (1200-1½)	NA	NA
CIRCLING	1780-1¼ 1198 (1200-1¼)	2060-1½ 1478 (1500-1½)	NA	NA