

WEST DOVER, VERMONT

AL-6788 (FAA)

NDB RWY 1

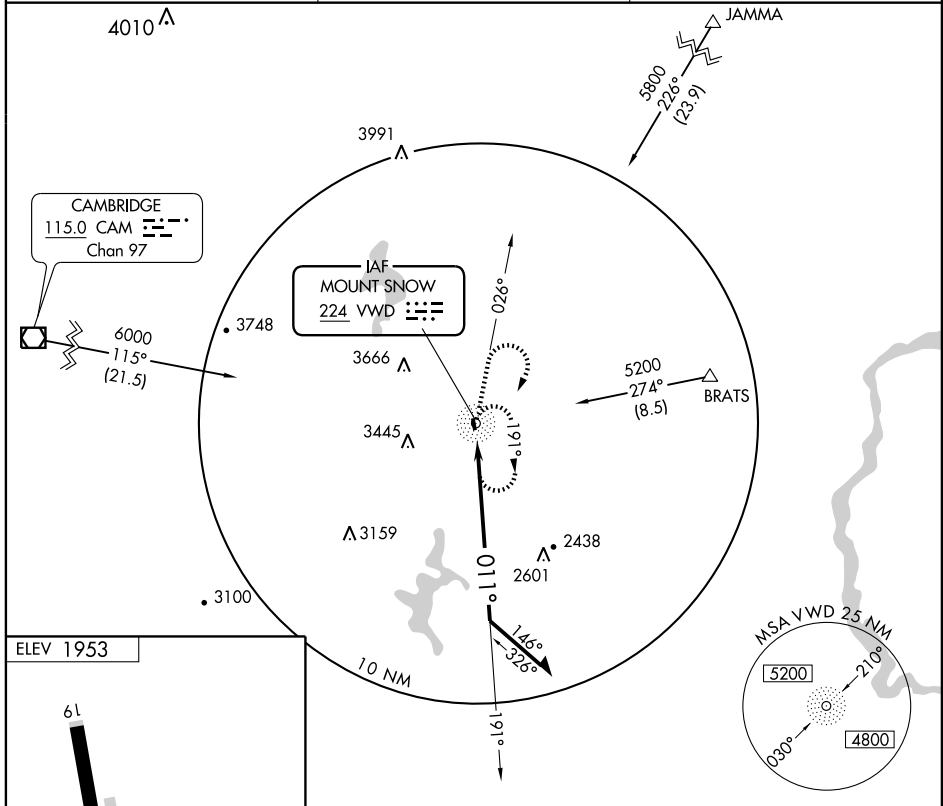
WEST DOVER/MOUNT SNOW (4V8)

VWD NDB 224	APP CRS 011°	Rwy Idg TDZE Apt Elev	2650 1953 1953
-----------------------	------------------------	-----------------------------	---

▼ Use Bennington altimeter setting; if not received, use Keene altimeter setting and increase all MDAs 40 feet.
 ▲ NA Procedure NA 0200 local to dawn. Circling to Rwy 19 NA at night.

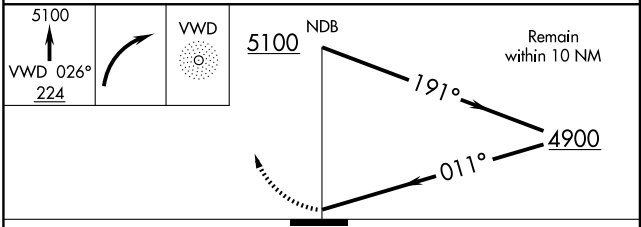
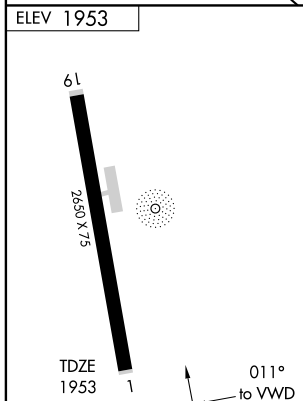
MISSED APPROACH: Climb to 5100 via 026° bearing from VWD NDB then right turn direct VWD NDB and hold.

BENNINGTON ASOS 135.925	BOSTON CENTER 123.75 338.2	UNICOM 122.8 (CTAF)
-----------------------------------	--------------------------------------	-------------------------------



NE-1, 19 NOV 2009 to 17 DEC 2009

NE-1, 19 NOV 2009 to 17 DEC 2009



CATEGORY	A	B	C	D
S-1	3480-1¼ 1527 (1600-1¼)	3480-1½ 1527 (1600-1½)		NA
CIRCLING	3480-1¼ 1527 (1600-1¼)	3480-1½ 1527 (1600-1½)		NA

WEST DOVER, VERMONT
Amdt 1 07298

42°56'N - 72°52'W

WEST DOVER/MOUNT SNOW (4V8)

NDB RWY 1

RNAV (GPS) RWY 1

WEST DOVER/MOUNT SNOW (4V8)

APP CRS	Rwy Idg	2650
020°	TDZE	1953
	Apt Elev	1953

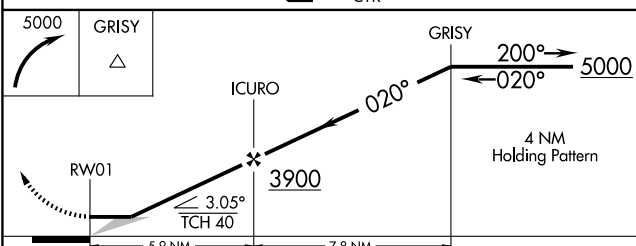
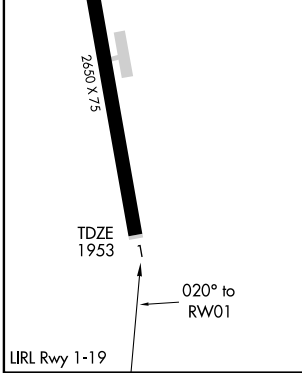
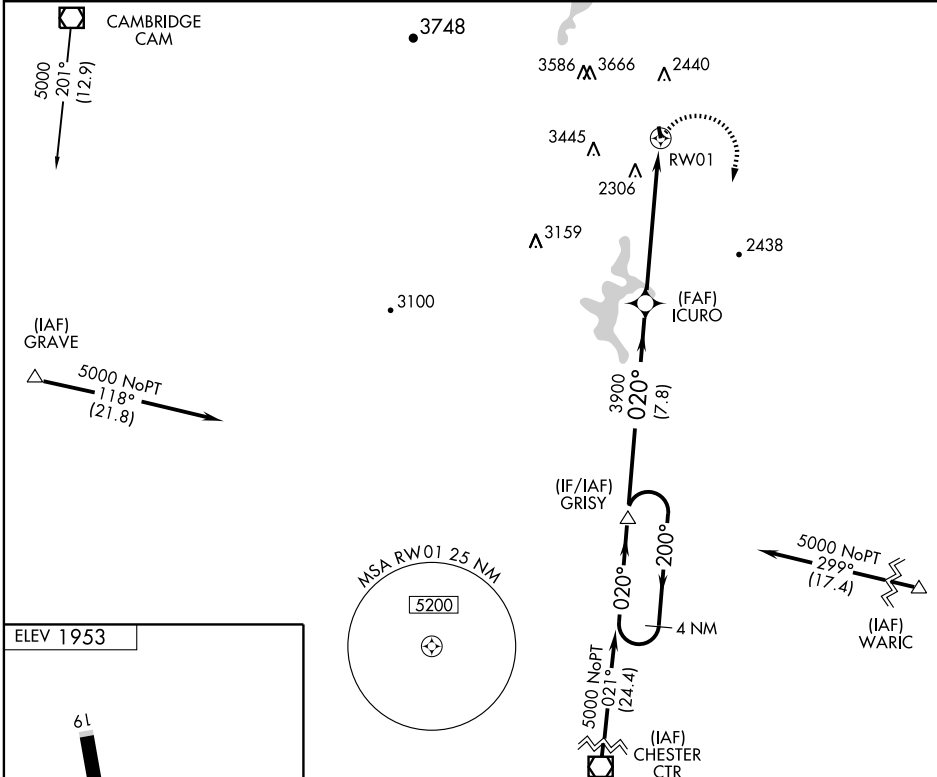
▼ Use Bennington altimeter setting; if not received, use Keene altimeter setting and increase all MDAs 40 feet.
 ▲ NA Circling to Rwy 19 NA at night.
 ▲ NA DME/DME RNP-0.3 NA.
 Procedure NA 0200 local to dawn.

MISSED APPROACH: Climbing right turn to 5000 direct GRISY and hold.

BENNINGTON ASOS
135.925

BOSTON CENTER
123.75 338.2

UNICOM
122.8 (CTAF)



CATEGORY	A	B	C	D
RNAV MDA	3140-1¼ 1187 (1200-1¼)	3140-1½ 1187 (1200-1½)		NA
CIRCLING	3160-1¼ 1207 (1300-1¼)	3400-1½ 1447 (1500-1½)		NA

NE-1, 19 NOV 2009 to 17 DEC 2009

NE-1, 19 NOV 2009 to 17 DEC 2009