

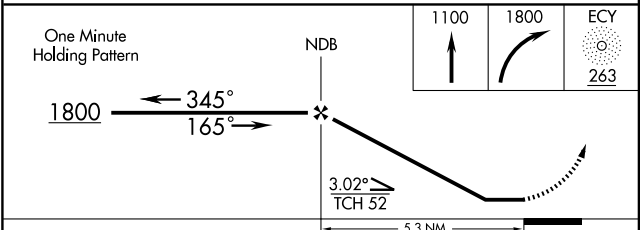
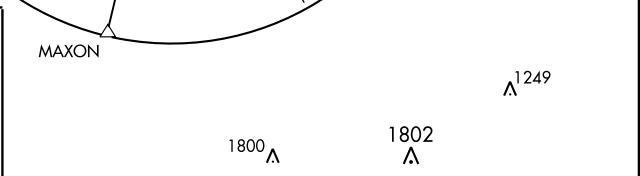
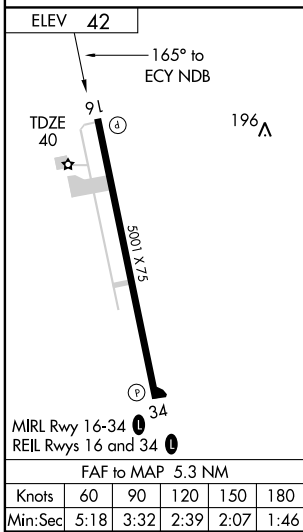
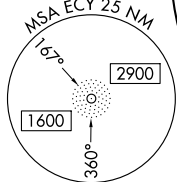
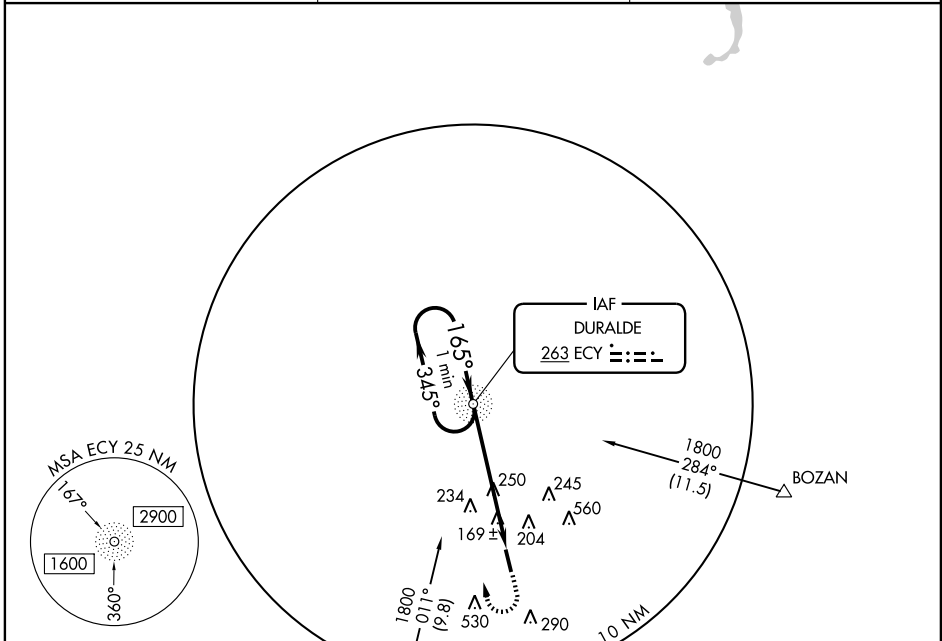
# NDB RWY 16

EUNICE (4R7)

NDB EGY	APP CRS	Rwy Idg	5001
263	165°	TDZE	40
		Apt Elev	42

**▽** Use Lafayette Rgnl altimeter setting.  
**▲** NA MISSED APPROACH: Climb to 1100 then climbing right turn to 1800 direct EGY NDB and hold.

LAFAYETTE APP CON *	GCO	UNICOM
128.7 268.7	135.075	122.8 (CTAF) <b>0</b>



CATEGORY	A	B	C	D
S-16	640-1	600 (600-1)	640-1½ 600 (600-1½)	NA
CIRCLING	640-1	598 (600-1)	640-1½ 598 (600-1½)	NA

SC-4, 31 MAY 2012 to 28 JUN 2012

SC-4, 31 MAY 2012 to 28 JUN 2012

# RNAV (GPS) RWY 16

EUNICE (4R7)

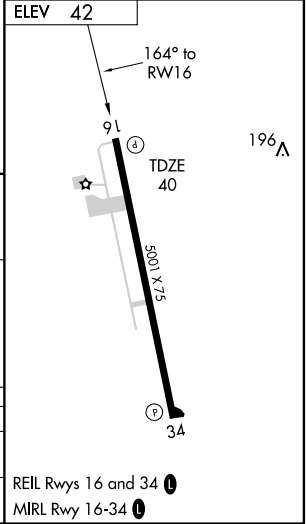
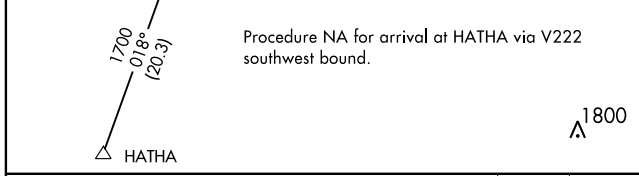
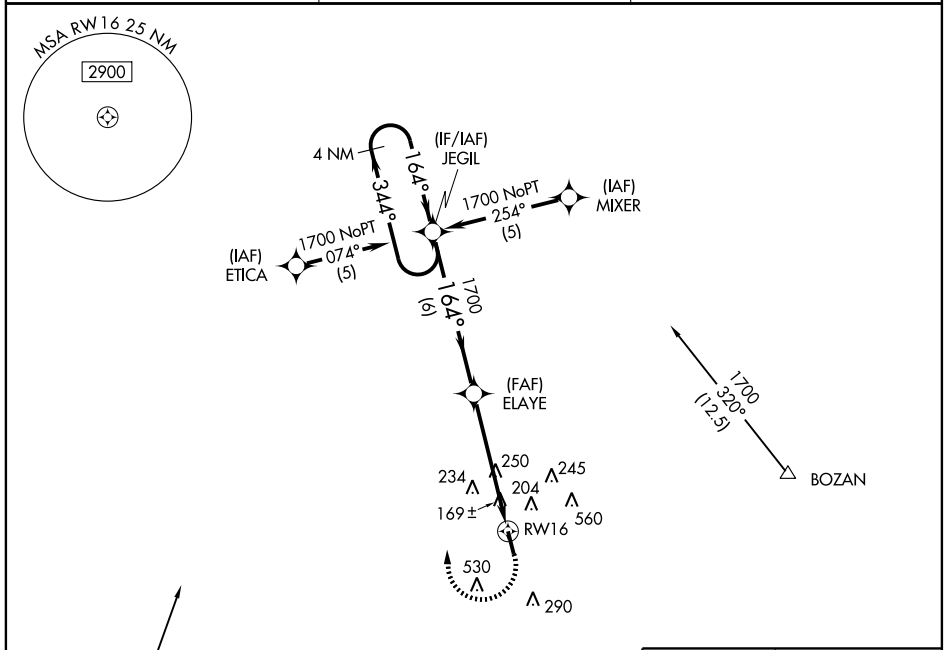
APP CRS <b>164°</b>	Rwy Idg <b>5001</b>
	TDZE <b>40</b>
	Apt Elev <b>42</b>

**▼** Use Lafayette Rgnl altimeter setting.  
GPS or RNP-0.3 Required. DME/DME RNP-0.3 NA.

**▲ NA** When VGSi inoperative, procedure NA at night.

**MISSED APPROACH:** Climbing right turn to 1700 direct JEGIL WP and hold.

LAFAYETTE APP CON ★ <b>128.7 268.7</b>	GGC <b>135.075</b>	UNICOM <b>122.8 (CTAF) 0</b>
---	-----------------------	---------------------------------



4 NM Holding Pattern	JEGIL	ELAYE	RWY 16
1700 ← 344° / 164° →	1700 → 164° →	1700 →	3.04° TCH 52
	6 NM	5 NM	

CATEGORY	A	B	C	D
RNAV MDA	580-1	540 (600-1)	580-1½ 540 (600-1½)	NA
CIRCLING	620-1	578 (600-1)	620-1½ 578 (600-1½)	NA

SC-4, 31 MAY 2012 to 28 JUN 2012

SC-4, 31 MAY 2012 to 28 JUN 2012

# RNAV (GPS) RWY 34

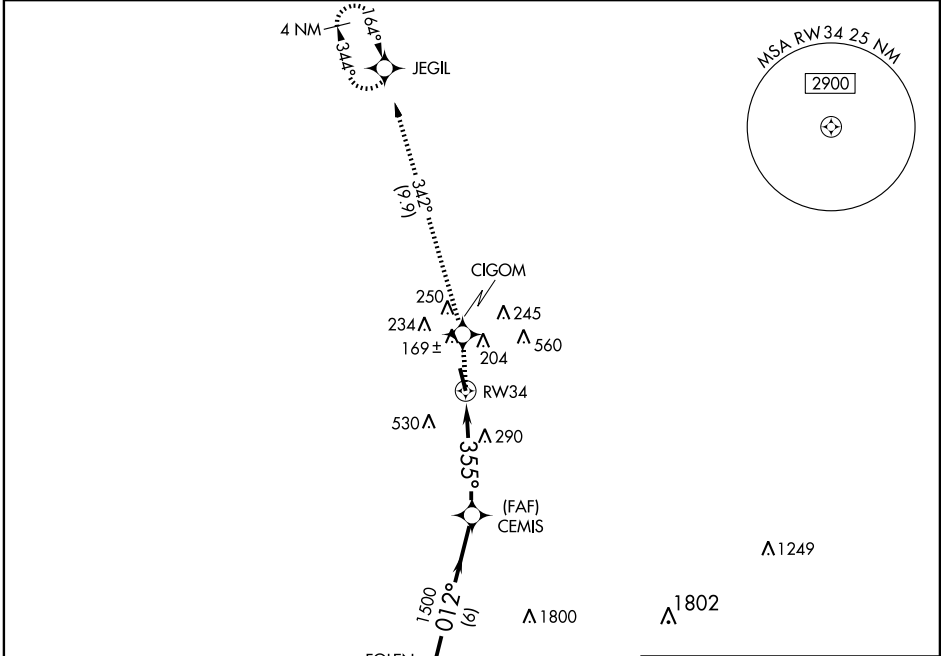
EUNICE (4R7)

APP CRS <b>355°</b>	Rwy Idg <b>5001</b>
	TDZE <b>42</b>
	Apt Elev <b>42</b>

**▼** Use Lafayette Rgnl altimeter setting.  
**▲ NA** GPS or RNP-0.3 Required. DME/DME RNP-0.3 NA.  
 When VGSI inoperative, circling Rwy 16 NA at night.

**MISSED APPROACH:** Climb to 1700 direct CIGOM WP and via 342° track to JEGIL WP and hold.

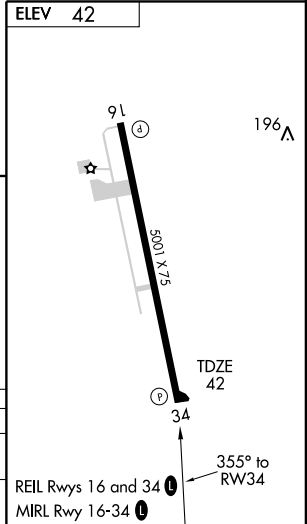
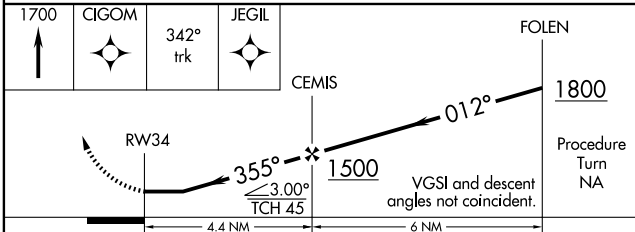
LAFAYETTE APP CON ★ <b>128.7 268.7</b>	GCO <b>135.075</b>	UNICOM <b>122.8 (CTAF) 0</b>
---	-----------------------	---------------------------------



SC-4, 31 MAY 2012 to 28 JUN 2012

SC-4, 31 MAY 2012 to 28 JUN 2012

Procedure NA for arrival at CRISP via V20-70 westbound.



CATEGORY	A	B	C	D
RNAV MDA	660-1 618 (700-1)		660-1¼ 618 (700-1¾)	NA
CIRCLING	660-1 618 (700-1)		660-1¼ 618 (700-1¾)	NA

EUNICE, LOUISIANA

AL-5524 (FAA)

# VOR/DME-A

EUNICE (4R7)

VORTAC LFT <b>109.8</b> Chan 35	APP CRS <b>303°</b>	Rwy Idg TDZE Apt Elev	N/A N/A 42
---------------------------------------	------------------------	-----------------------------	------------------

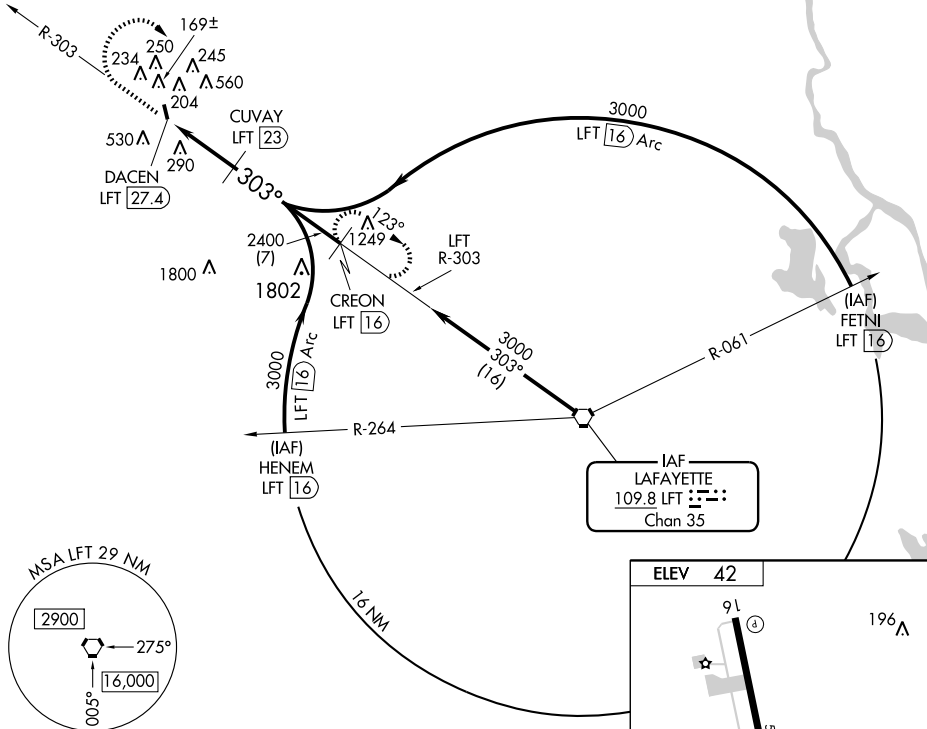
**▽** Use Lafayette Rgnl altimeter setting.  
**△** NA

MISSED APPROACH: Climb to 1000 then climbing right turn to 3000 via LFT R-303 to CREON/LFT 16 DME and hold.

LAFAYETTE APP CON ★  
**128.7 268.7**

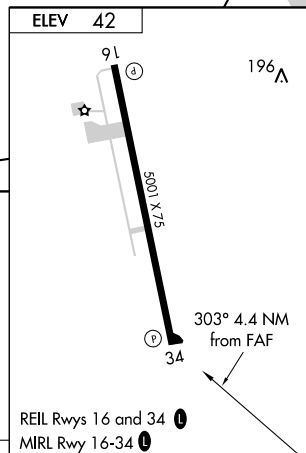
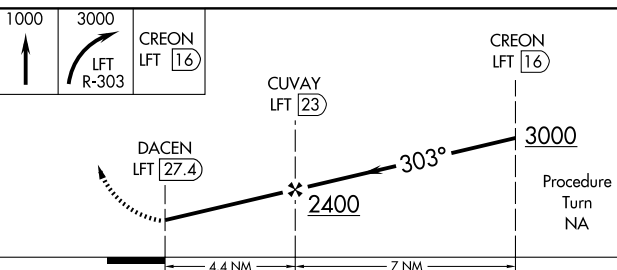
GCO  
**135.075**

UNICOM  
**122.8** (CTAF) **0**



SC-4, 31 MAY 2012 to 28 JUN 2012

SC-4, 31 MAY 2012 to 28 JUN 2012



CATEGORY	A	B	C	D	Knots	60	90	120	150	180
CIRCLING	800-1 758 (800-1)	800-1¼ 758 (800-1¼)	800-2¼ 758 (800-2¼)	NA	Min:Sec					

EUNICE, LOUISIANA  
Amdt 3 09295

30°28'N-92°25'W

# VOR/DME-A

EUNICE (4R7)