

NDB RWY 16

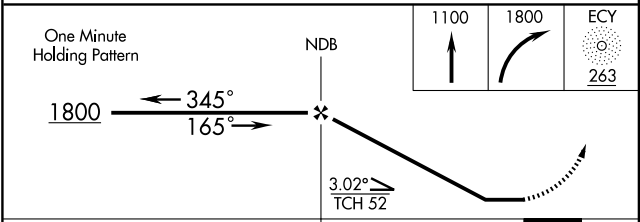
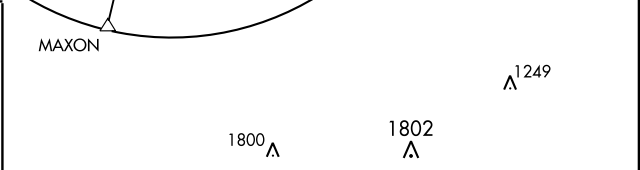
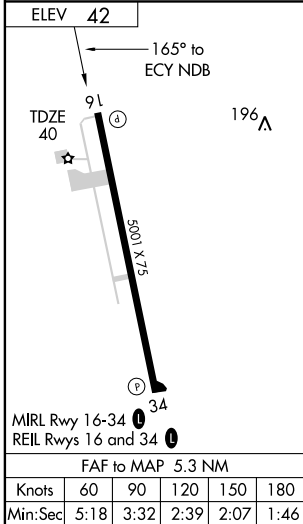
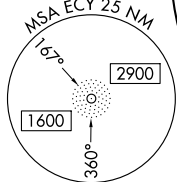
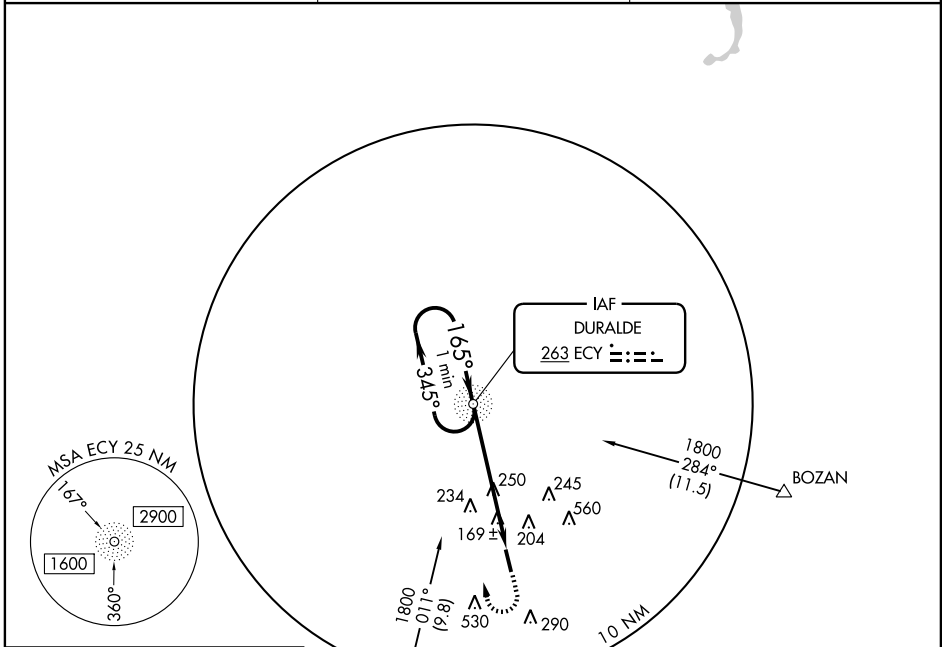
EUNICE (4R7)

NDB EGY	APP CRS	Rwy Idg	5001
263	165°	TDZE	40
		Apt Elev	42

▽ Use Lafayette Rgnl altimeter setting. **MISSED APPROACH:** Climb to 1100 then climbing right turn to 1800 direct EGY NDB and hold.

▲ NA

LAFAYETTE APP CON *	GCO	UNICOM
128.7 268.7	135.075	122.8 (CTAF) 0



CATEGORY	A	B	C	D
S-16	640-1	600 (600-1)	640-1½ 600 (600-1½)	NA
CIRCLING	640-1	598 (600-1)	640-1½ 598 (600-1½)	NA

SC-4, 31 MAY 2012 to 28 JUN 2012

SC-4, 31 MAY 2012 to 28 JUN 2012

RNAV (GPS) RWY 16

EUNICE (4R7)

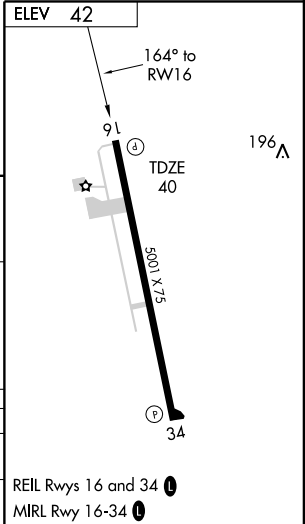
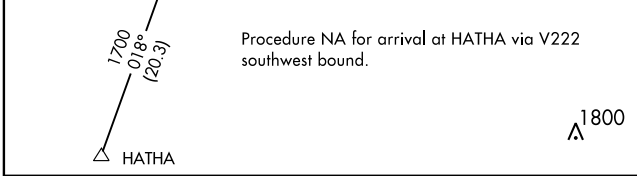
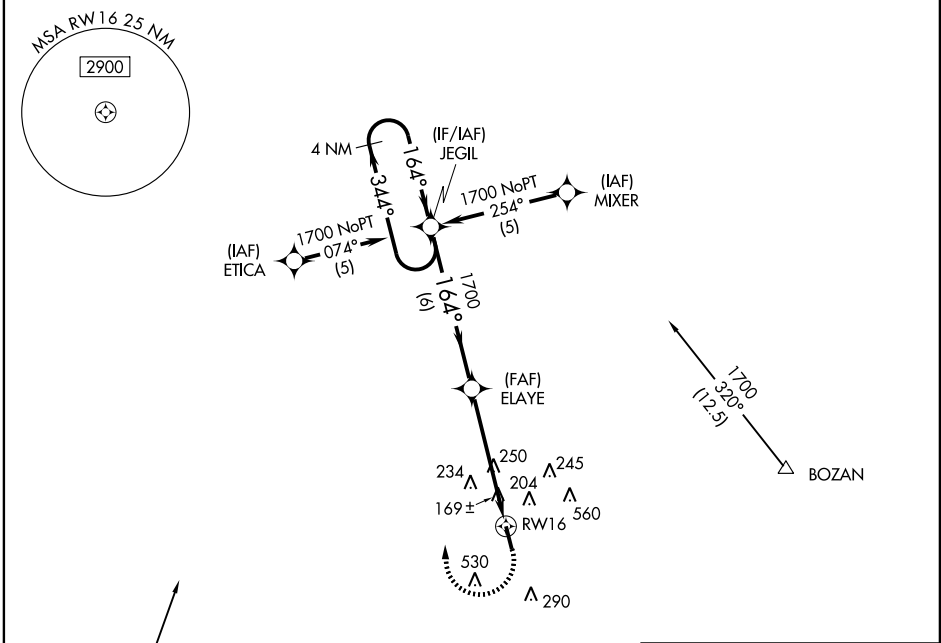
APP CRS 164°	Rwy Idg 5001
	TDZE 40
	Apt Elev 42

▼ Use Lafayette Rgnl altimeter setting.
GPS or RNP-0.3 Required. DME/DME RNP-0.3 NA.

▲ NA When VGSi inoperative, procedure NA at night.

MISSED APPROACH: Climbing right turn to 1700 direct JEGIL WP and hold.

LAFAYETTE APP CON ★ 128.7 268.7	GGC 135.075	UNICOM 122.8 (CTAF) 0
---	-----------------------	---------------------------------



CATEGORY	A	B	C	D
LNVA MDA	580-1	540 (600-1)	580-1½ 540 (600-1½)	NA
CIRCLING	620-1	578 (600-1)	620-1½ 578 (600-1½)	NA

6 NM	5 NM
------	------

SC-4, 31 MAY 2012 to 28 JUN 2012

SC-4, 31 MAY 2012 to 28 JUN 2012

RNAV (GPS) RWY 34

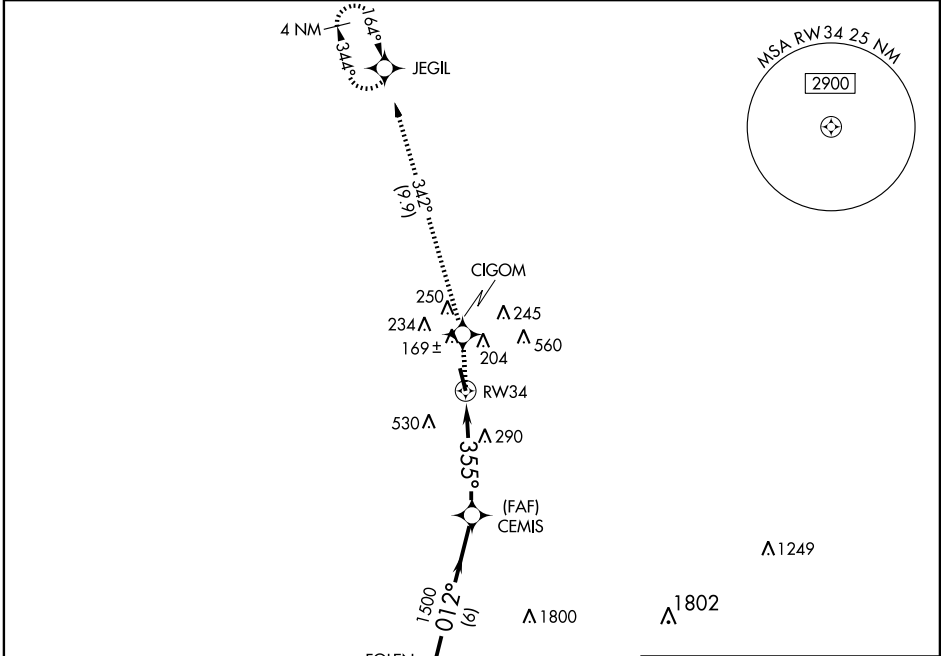
EUNICE (4R7)

APP CRS 355°	Rwy Idg 5001
	TDZE 42
	Apt Elev 42

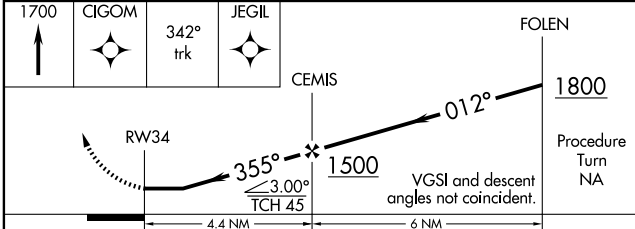
▼ Use Lafayette Rgnl altimeter setting.
▲ NA GPS or RNP-0.3 Required. DME/DME RNP-0.3 NA.
 When VGSI inoperative, circling Rwy 16 NA at night.

MISSED APPROACH: Climb to 1700 direct CIGOM WP and via 342° track to JEGIL WP and hold.

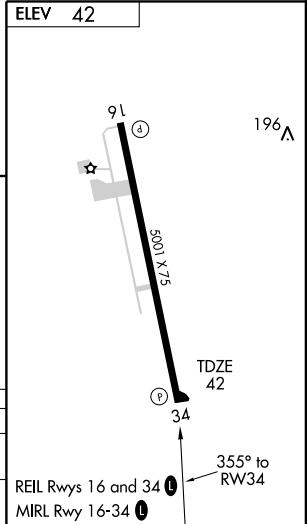
LAFAYETTE APP CON ★ 128.7 268.7	GCO 135.075	UNICOM 122.8 (CTAF) 0
---	-----------------------	---------------------------------



Procedure NA for arrival at CRISP via V20-70 westbound. (IAF) CRISP



CATEGORY	A	B	C	D
RNAV MDA	660-1 618 (700-1)		660-1¼ 618 (700-1¾)	NA
CIRCLING	660-1 618 (700-1)		660-1¼ 618 (700-1¾)	NA



SC-4, 31 MAY 2012 to 28 JUN 2012

SC-4, 31 MAY 2012 to 28 JUN 2012

EUNICE, LOUISIANA

AL-5524 (FAA)

VOR/DME-A

EUNICE (4R7)

VORTAC LFT 109.8 Chan 35	APP CRS 303°	Rwy Idg TDZE Apt Elev	N/A N/A 42
---------------------------------------	------------------------	-----------------------------	---------------------------------------

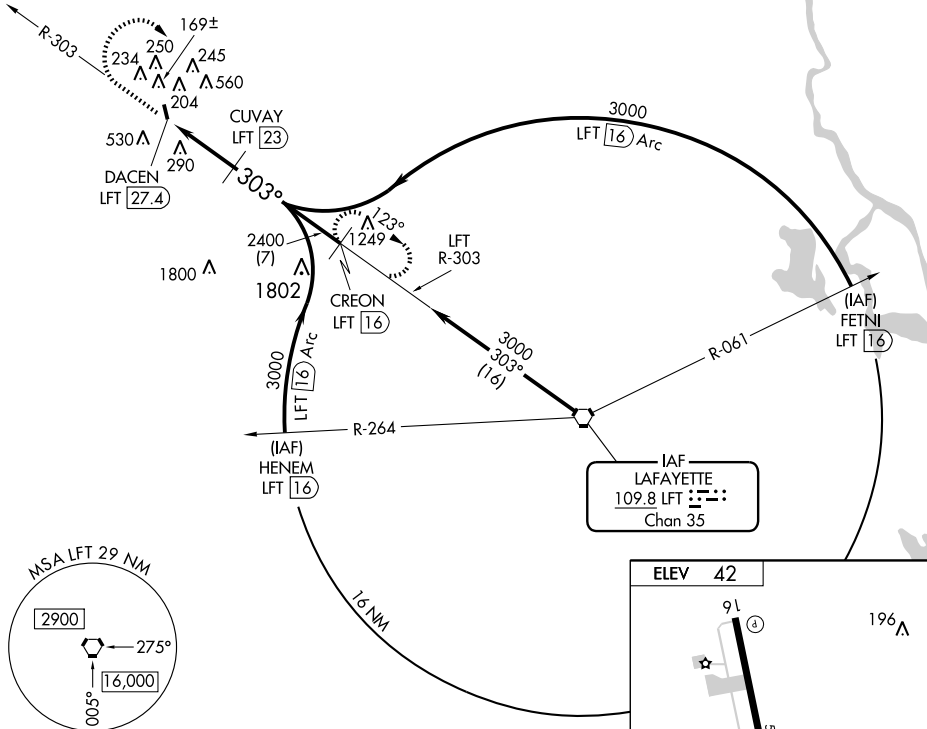
Use Lafayette Rgnl altimeter setting.
NA

MISSED APPROACH: Climb to 1000 then climbing right turn to 3000 via LFT R-303 to CREON/LFT 16 DME and hold.

LAFAYETTE APP CON ★
128.7 268.7

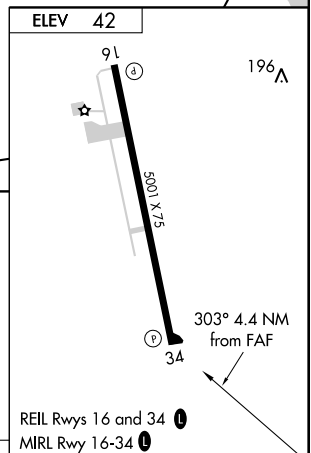
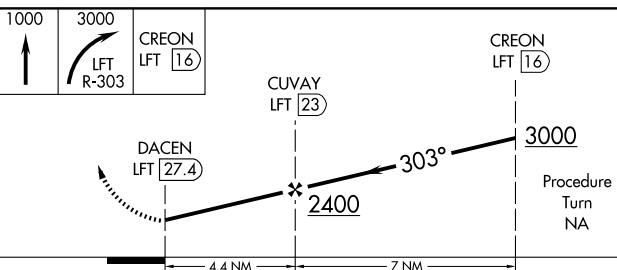
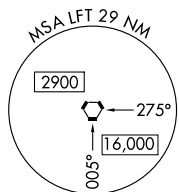
GCO
135.075

UNICOM
122.8 (CTAF) 0



SC-4, 31 MAY 2012 to 28 JUN 2012

SC-4, 31 MAY 2012 to 28 JUN 2012



CATEGORY	A	B	C	D
CIRCLING	800-1 758 (800-1)	800-1¼ 758 (800-1¼)	800-2¼ 758 (800-2¼)	NA

ELEV	42
Knots	60 90 120 150 180
Min:Sec	

EUNICE, LOUISIANA
Amdt 3 09295

30°28'N-92°25'W

VOR/DME-A

EUNICE (4R7)

TAKE-OFF MINIMUMS AND (OBSTACLE) DEPARTURE PROCEDURES

12152

INSTRUMENT APPROACH PROCEDURE CHARTS

IFR TAKE-OFF MINIMUMS AND (OBSTACLE) DEPARTURE PROCEDURES

Civil Airports and Selected Military Airports

ALL USERS: Airports that have Departure Procedures (DPs) designed specifically to assist pilots in avoiding obstacles during the climb to the minimum enroute altitude, and/or airports that have civil IFR take-off minimums other than standard, are listed below. Take-off Minimums and Departure Procedures apply to all runways unless otherwise specified. Altitudes, unless otherwise indicated, are minimum altitudes in MSL.

DPs specifically designed for obstacle avoidance are referred to as Obstacle Departure Procedures (ODPs) and are described below in text, or published separately as a graphic procedure. If the (Obstacle) DP is published as a graphic procedure, its name will be listed below, and it can be found in either this volume (civil), or the applicable military volume, as appropriate. Users will recognize graphic obstacle DPs by the term "(OBSTACLE)" included in the procedure title; e.g., TETON TWO (OBSTACLE). If not specifically assigned a departure procedure (i.e., ODP, SID, or radar vector) as part of an IFR clearance, an ODP may be required to be flown for obstacle clearance, even though not specifically stated in the IFR clearance. When doing so in this manner, ATC should be informed when the ODP being used contains a specified route to be flown, restrictions before turning, and/or altitude restrictions.

Graphic DPs designed by ATC to standardize traffic flows, ensure aircraft separation and enhance capacity are referred to as "Standard Instrument Departures (SIDs)". SIDs also provide obstacle clearance and are published under the appropriate airport section. ATC clearance must be received prior to flying a SID.

CIVIL USERS NOTE: Title 14 Code of Federal Regulations Part 91 prescribes standard take-off rules and establishes take-off minimums for certain operators as follows: (1) Aircraft having two engines or less - one statute mile. (2) Aircraft having more than two engines - one-half statute mile. These standard minima apply in the absence of any different minima listed below.

MILITARY USERS NOTE: Civil (nonstandard) take-off minima are published below. For military take-off minima, refer to appropriate service directives.

NAME	TAKE-OFF MINIMUMS
------	-------------------

ABBEVILLE, LA

ABBEVILLE CHRIS CRUSTA MEMORIAL

(IYA)

ORIG 11237 (FAA)

NOTE: **Rwy 16**, trees and poles beginning 1' from DER, 36' left of centerline, up to 98' AGL/112' MSL. Trees and poles beginning 32' from DER, 14' right of centerline, up to 81' AGL/95' MSL. **Rwy 34**, trees beginning 121' from DER, 275' right of centerline, up to 15' AGL/29' MSL. Trees and pole beginning 1110' from DER, 625' left of centerline, up to 80' AGL/95' MSL. Transmission tower 4414' from DER, 724' left of centerline, 114' AGL/129' MSL.

ABERDEEN/AMORY, MS

MONROE COUNTY

NOTE: **Rwy 18**, pole 460' from departure end of runway, 365' left of centerline, 25' AGL/254' MSL. Trees beginning 7' from departure end of runway, 61' left of centerline, up to 100' AGL/310' MSL. Trees beginning 839' from departure end of runway, 83' right of centerline, up to 116' AGL/316' MSL. **Rwy 36**, trees beginning 241' from departure end of runway, 490' left of centerline, up to 83' AGL/303' MSL. Trees beginning 27' from departure end of runway, 426' right of centerline, up to 92' AGL/312' MSL. Tree 3078' from departure end of runway, 276' right of centerline, 81' AGL/301' MSL.

NAME	TAKE-OFF MINIMUMS
------	-------------------

ALEXANDRIA, LA

ALEXANDRIA INTL

NOTE: **Rwy 18**, multiple trees and bush beginning 897' from departure end of runway, 210' right of centerline, up to 83' AGL/173' MSL. Multiple trees and fence beginning 91' from departure end of runway, 326' left of centerline, up to 80' AGL/167' MSL. **Rwy 32**, multiple trees beginning 1537' from departure end of runway, 662' right of centerline, up to 80' AGL/162' MSL.

Rwy 36, multiple trees beginning 1298' from departure end of runway, 25' left of centerline, up to 90' AGL/170' MSL. Multiple trees beginning 1340' from departure end of runway, 155' right of centerline, up to 90' AGL/169' MSL. Antenna, 5041' from departure end of runway, 793' left of centerline, 140' AGL/216' MSL.

12152

TAKE-OFF MINIMUMS AND (OBSTACLE) DEPARTURE PROCEDURES

TAKE-OFF MINIMUMS AND (OBSTACLE) DEPARTURE PROCEDURES

12152

ALEXANDRIA, LA (CON'T)

ESLER RGNL (ESF)
AMDT 2 10098 (FAA)

NOTE: **Rwy 9**, multiple trees beginning 697' from DER, 612' right of centerline, up to 83' AGL/153' MSL. Antenna 2236' from DER, 912' left of centerline, 78' AGL/158' MSL. **Rwy 14**, trees 928' from DER, 606' left of centerline, 90' AGL/160' MSL. Trees 2003' from DER, 141' left of centerline, 98' AGL/168' MSL. Multiple trees beginning 941' from DER, 257' right of centerline, up to 121' AGL/231' MSL. **Rwy 27**, light 38' from DER, 148' right of centerline, 8' AGL/98' MSL. Pole 650' from DER, 649' right of centerline, 39' AGL/129' MSL. Trees 3290' from DER, 984' right of centerline, 121' AGL/211' MSL. **Rwy 32**, rising terrain from 197' from DER through 1886' from DER, up to 0' AGL/165' MSL. Multiple trees and fence beginning 1959' from DER, 8' left of centerline, up to 123' AGL/236' MSL. Antenna 148' from DER, 417' left of centerline, 15' AGL/125' MSL. Trees 1862' from DER, 200' right of centerline, 79' AGL/219' MSL.

BASTROP, LA

MOREHOUSE MEMORIAL

NOTE: **Rwy 34**, powerlines 1700' from departure end of runway, 70' AGL/214' MSL.

BATESVILLE, MS

PANOLA COUNTY

TAKE-OFF MINIMUMS: **Rwy 1**, 300-1½ or std. w/ min. climb of 259' per NM to 500. **Rwy 19**, 200-1½ or std. w/ min. climb of 370' per NM to 500.

DEPARTURE PROCEDURE: **Rwy 1**, climb heading 008° to 800 before turning left. **Rwy 19**, climb heading 188° to 1000 before turning right.

NOTE: **Rwy 1**, multiple trees beginning 74' from departure end of runway, 97' left of centerline, up to 100' AGL/439' MSL. Multiple trees beginning 130' from departure end of runway, 52' right of centerline, up to 100' AGL/420' MSL. **Rwy 19**, pole and road with vehicle beginning 49' from departure end of runway, 499' left of centerline, up to 23' AGL/252' MSL. Terrain 17' from departure end of runway, 37' left of centerline, 263' MSL. Multiple trees beginning 452' from departure end of runway, 106' left of centerline, up to 100' AGL/409' MSL. Terrain 59' from departure end of runway, 210' right of centerline, 224' MSL. Multiple trees beginning 1236' from departure end of runway, 39' right of centerline, up to 100' AGL/399' MSL.

BATON ROUGE, LA

BATON ROUGE METROPOLITAN, RYAN
FIELD (BTR)
AMDT 1 10154 (FAA)

TAKE-OFF MINIMUMS: **Rwy 22R**, 300-2¼ or std. w/ min. climb of 229' per NM to 500.

DEPARTURE PROCEDURE: **Rwy 22L**, climb heading 220° to 2000 before proceeding on course. **Rwy 22R**, climb heading 220° to 2000 before proceeding on course.

NOTE: **Rwy 4L**, vehicles on roadway 210' from DER, 482' right of centerline, 15' AGL/79' MSL. Poles 631' from DER, 469' left of centerline, 23' AGL/92' MSL. Trees beginning 1180' from DER, 153' left of centerline, up to 75' AGL/144' MSL. Trees beginning 1380' from DER, 7' right of centerline, up to 79' AGL/148' MSL. Transmission tower 2516' from DER, 897' left of centerline, 80' AGL/149' MSL. **Rwy 4R**, vehicles on roadway 5' from DER, 392' right of centerline, up to 15' AGL/84' MSL. Trees beginning 207' from DER, 128' right of centerline, up to 85' AGL/153' MSL. **Rwy 13**, pole 300' from DER, 549' left of centerline, 22' AGL/91' MSL. Vehicles on roadway 342' from DER, left and right of centerline, up to 15' AGL/84' MSL. Antenna on building 479' from DER, 247' right of centerline, 22' AGL/91' MSL. Sign 968' from DER, 741' right of centerline, 31' AGL/100' MSL. Trees beginning 1395' from DER, 114' left of centerline, up to 97' AGL/166' MSL. Trees beginning 1807' from DER, 203' right of centerline, up to 95' AGL/164' MSL. **Rwy 22L**, trees beginning 2140' from DER, 52' left of centerline, up to 90' AGL/156' MSL. Tree 2371' from DER, 60' right of centerline, 69' AGL/135' MSL. Sign 3507' from DER, 284' left of centerline, 77' AGL/163' MSL. **Rwy 22R**, poles beginning 431' from DER, 81' right of centerline, up to 55' AGL/120' MSL. Building 503' from DER, 481' right of centerline, 14' AGL/79' MSL. Poles beginning 1063' from DER, 77' left of centerline, up to 93' AGL/158' MSL. Trees beginning 1210' from DER, 352' left of centerline, up to 103' AGL/168' MSL. Trees beginning 444' from DER, 108' right of centerline, up to 89' AGL/154' MSL. Stacks beginning 9852' from DER, 2390' left of centerline, up to 311' AGL/366' MSL. **Rwy 31**, fence 191' from DER, 468' right of centerline, 7' AGL/73' MSL. Trees beginning 814' from DER, 120' right of centerline, up to 37' AGL/103' MSL. Trees beginning 1076' from DER, 310' left of centerline, up to 70' AGL/136' MSL. Poles 1353' from DER, 287' right of centerline, up to 57' AGL/123' MSL. Tank 1862' from DER, 868' right of centerline, 53' AGL/119' MSL. Poles beginning 2507' from DER, 274' left of centerline, up to 76' AGL/142' MSL.

NOTE: CAUTION. Unmarked balloon and cable to 15000 in R-3807. **Rwy 4L**, 20975.4 NM. **Rwy 4R**, 20975.1.2 NM. **Rwy 13**, 20975.0.7 NM. **Rwy 22L**, 20975.0.6 NM. **Rwy 22R**, 20975.0.3 NM. **Rwy 31**, 20875.0.9 NM.

31 MAY 2012 to 28 JUN 2012

31 MAY 2012 to 28 JUN 2012

12152

TAKE-OFF MINIMUMS AND (OBSTACLE) DEPARTURE PROCEDURES

TAKE-OFF MINIMUMS AND (OBSTACLE) DEPARTURE PROCEDURES

12152

BOGALUSA, LA

GEORGE R. CARR MEMORIAL AIR FIELD (BXA)

AMDT 2 09351 (FAA)

TAKE-OFF MINIMUMS: **Rwy 18**, 500-3 or std. with a min. climb of 255' per NM to 800.

NOTE: **Rwy 18**, numerous trees beginning 1463' from DER, 332' left of centerline up to 100' AGL/203' MSL. Numerous trees beginning 1272' from DER 360' right of centerline up to 100' AGL/200' MSL. Water tower 2734' from DER, 1046' left of centerline, 160' AGL/262' MSL. Smoke stack 9654' from DER, 2140' left of centerline, 250' AGL/357' MSL. **Rwy 36**, trees 486' from DER, 459' left of centerline, up to 100' AGL/217' MSL. Building 12' from DER, 305' right of centerline, 10' AGL/130' MSL.

BOONEVILLE/BALDWYN, MS

BOONEVILLE/BALDWYN

NOTE: **Rwy 15**, trees 1250' from departure end of runway, 100' right of centerline, 100' AGL/465' MSL. Trees 3847' from departure end of runway, 127' left of centerline, 100' AGL/519' MSL. **Rwy 33**, road and vehicle 8' from departure end of runway, 188' right of centerline, 15' AGL/394' MSL.

BROOKHAVEN, MS

BROOKHAVEN-LINCOLN COUNTY

TAKE-OFF MINIMUMS: **Rwy 22**, 500-1.

DEPARTURE PROCEDURE: **Rwy 4**, climb runway heading to 900 before turning.

BUNKIE, LA

BUNKIE MUNI (2R6)

ORIG 09127 (FAA)

NOTE: **Rwy 18**, trees 1404' from DER, 506' right of centerline, 50' AGL/109' MSL. Vehicle on road 481' from DER, 28' right of centerline, 15' AGL/74' MSL.

CLARKSDALE, MS

FLETCHER FIELD (CKM)

ORIG 08269 (FAA)

NOTE: **Rwy 18**, building 476' from departure end of runway, 495' right of centerline 168' AGL/215' MSL. Vehicle 995' from departure end of runway, 502' left of centerline, 165' AGL/190' MSL. Trees beginning 5619' from departure end of runway, 630' left of centerline, 158' AGL/273' MSL. **Rwy 36**, trees beginning 2258' from departure end of runway, 220' left of centerline, 100' AGL/274' MSL.

CLEVELAND, MS

CLEVELAND MUNI

TAKE-OFF MINIMUMS: **Rwys 8, 26**, NA.

DEPARTURE PROCEDURE: **Rwy 17**, climb runway heading to 600 before turning.

COLUMBIA, MS

COLUMBIA-MARION COUNTY (OR0)

ORIG 07354 (FAA)

TAKE-OFF MINIMUMS: **Rwys 13, 31**, NA-obstacles.

DEPARTURE PROCEDURE: **Rwy 23**, climb heading 234° to 800 before turning left.

NOTE: **Rwy 5**, trees beginning 175' from departure end of runway, 414' right of centerline, up to 100' AGL/379' MSL.

Rwy 23, vehicle on road beginning 133' from departure end of runway, 46' right of centerline, 17' AGL/266' MSL. Tree and house beginning 227' from departure end of runway, 240' right of centerline, up to 100' AGL/349' MSL. Trees beginning 357' from departure end of runway, 273' left of centerline, up to 100' AGL/349' MSL.

COLUMBUS, MS

COLUMBUS-LOWNDES COUNTY (UBS)

ORIG-A 11097 (FAA)

TAKE-OFF MINIMUMS: **Rwy 18**, 300-1 or std. w/ min. climb of 350' per NM to 500. **Rwy 36**, 500-3 or std. w/ min. climb of 280' per NM to 900.

DEPARTURE PROCEDURE: **Rwys 18, 36**, climb runway heading to 600 before turning.

NOTE: **Rwy 36**, tower 2.5 NM from DER, 3441' left of centerline, 492' AGL/657' MSL.

COLUMBUS AFB (KCBM),

COLUMBUS, MS ORIG 11097

DEPARTURE PROCEDURE: **Rwy 13C**, Standard with minimum climb of 220 ft/NM to 700 ft or 200-1¼ or with standard takeoff minimums and a standard 200 ft/NM climb gradient, takeoff must occur no later than 1400 ft prior to departure end of runway. **Rwy 31C**, Standard with minimum climb of 240 ft/NM to 600 ft or 200-1¼ or with standard takeoff minimums and a standard 200 ft/NM climb gradient, takeoff must occur no later than 2100 ft prior to departure end of runway. **Rwy 13L**, Standard with minimum climb of 220 ft/NM to 700 ft or 200-1¼ or with standard takeoff minimums and a standard 200 ft/NM climb gradient, takeoff must occur no later than 1500 ft prior to departure end of runway. **Rwy 31L**, Standard with minimum climb of 210 ft/NM to 600 ft or 200-1¼ or with standard takeoff minimums and a standard 200 ft/NM climb gradient, takeoff must occur no later than 1300 ft prior to departure end of runway. **Rwy 13R**, Standard. **Rwy 31R**, Standard with minimum climb of 240 ft/NM to 600 ft or 200-1¼ or with standard takeoff minimums and a standard 200 ft/NM climb gradient, takeoff must occur no later than 2100 ft prior to departure end of runway.

TAKE-OFF OBSTACLES: **Rwy 13C**, Trees 288' MSL/74' AGL 2967' from DER 1010' left of centerline. Trees 288' MSL/74' AGL 3005' from DER. 223' right of centerline. **Rwy 13R**, Ramp lights 272' MSL/69' AGL 2795' from DER, 766' right of centerline. **Rwy 31C**, Trees 251' MSL/74' AGL 2340' from DER, 942' right of centerline. Trees 251' MSL/74' AGL 2250' from DER, 770' right of centerline. Pylon 348' MSL/157' AGL 1.2 NM from DER, 1104' right of centerline. Pylon 334' MSL/157' AGL 1.0 NM from DER, 2550' right of centerline. **Rwy 31L**, Taxiing aircraft 205' MSL/14' AGL 556' from DER, 281' right of centerline. Taxiing aircraft 204' MSL/14' AGL 554' from DER, 156' left of centerline. Pylon 348' MSL/157' AGL 1.3 NM from DER, 2617' right of centerline. **Rwy 31R**, Taxiing aircraft 197' MSL/14' AGL 80' from DER 472' left of centerline. Trees 251' MSL/74' AGL 2122' from DER, 1104' right of centerline. Pylon 341' MSL/157' AGL 1.1 NM from DER, 2197' right of centerline.

31 MAY 2012 to 28 JUN 2012

31 MAY 2012 to 28 JUN 2012

12152

TAKE-OFF MINIMUMS AND (OBSTACLE) DEPARTURE PROCEDURES

SC-4

TAKE-OFF MINIMUMS AND (OBSTACLE) DEPARTURE PROCEDURES

12152

COLUMBUS/WESTPOINT/STARKVILLE, MS

GOLDEN TRIANGLE RGNL

NOTE: **Rwy 18**, tree 2025' from departure end of runway, 1019' left of centerline, 78' AGL/315' MSL. Tree 108' from departure end of runway, 295' right of centerline, 15' AGL/262' MSL. **Rwy 36**, tree 626' from departure end of runway, 579' right of centerline, 38' AGL/285' MSL. Tree 122' from departure end of runway, 268' left of centerline, 23' AGL/270' MSL. Tree 525' from departure end of runway, 592' right of centerline, 26' AGL/279' MSL.

CORINTH, MS

ROSCOE TURNER (CRX)

ORIG 08045 (FAA)

NOTE: **Rwy 18**, Vehicle on road 207' from departure end of runway, 481' right of centerline, 15' AGL/446' MSL. Trees 305' from departure end of runway, 451' left of centerline, up to 71' AGL/500' MSL. Trees 633' from departure end of runway, 505' right of centerline, up to 79' AGL/520' MSL. **Rwy 36**, Trees 1099' from departure end of runway, 766' right of centerline, up to 86' AGL/480' MSL. Trees 1645' from departure end of runway, 751' left of centerline, up to 86' AGL/480' MSL.

DE QUINCY, LA

DE QUINCY INDUSTRIAL AIRPARK (5R8)

ORIG 11013 (FAA)

TAKE-OFF MINIMUMS: **Rwy 33**, 300-2 or std. w/ min. climb of 278' per NM to 600.

NOTE: **Rwy 15**, tree 481' from DER, 619' right of centerline, 100' AGL/184' MSL. Tree 955' from DER, 699' left of centerline, 100' AGL/184' MSL. **Rwy 33**, tree 230' from DER, 475' left of centerline, 100' AGL/184' MSL. Trees beginning 2206' from DER, 161' right of centerline, up to 100' AGL/189' MSL.

DERIDDER, LA

BEAUREGARD RGNL (DRI)

AMDT 4 09127 (FAA)

NOTE: **Rwy 14**, trees 1673' from DER, 128' left of centerline, 100' AGL/309' MSL. **Rwy 18**, multiple trees beginning 53' from DER, 222' left of centerline, up to 30' AGL/220' MSL. Multiple trees beginning 152' from DER, 272' right of centerline, up to 73' AGL/263' MSL. **Rwy 32**, multiple trees and bushes beginning 129' from DER, 17' left of centerline, up to 68' AGL/248' MSL. Trees 299' from DER, 190' right of centerline, 26' AGL/216' MSL. **Rwy 36**, pole 563' from DER, 353' left of centerline, 38' AGL/238' MSL. Multiple trees beginning 634' from DER, 1' left of centerline, up to 113' AGL/313' MSL. Multiple trees beginning 557' from DER, 73' right of centerline, up to 99' AGL/299' MSL.

DREW, MS

ROULEVILLE-DREW (M37)

ORIG 10070 (FAA)

NOTE: **Rwy 18**, trees beginning 215' from DER, 521' left of centerline, up to 100' AGL/229' MSL. **Rwy 36**, trees beginning 3438' from DER, 225' left of centerline, up to 100' AGL/234' MSL.

EUNICE, LA

EUNICE

TAKE-OFF MINIMUMS: **Rwy 16**, 1100-2½, climb in visual conditions to cross Eunice Airport at or above 1000 MSL before proceeding on course or std. with a min. climb of 280' per NM to 2400. **Rwy 34**, 1100-2½, climb in visual conditions to cross Eunice Airport at or above 1000 MSL before proceeding on course or std. with a min. climb of 220' per NM to 2400.

CAUTION: Unmarked balloon and cable to 15000 in R-3807. **Rwy 16**, 133756.1 NM. **Rwy 34**, 132755.4 NM.

GALLIANO, LA

SOUTH LAFOURCHE LEONARD MILLER JR

(GAO)

ORIG 08269 (FAA)

NOTE: **Rwy 18**, multiple trees beginning 1258' from departure end of runway, 661' left of centerline, up to 45' AGL/56' MSL. Multiple trees beginning 127' from departure end of runway, 275' right of centerline, up to 45' AGL/53' MSL. **Rwy 36**, tree 14' from departure end of runway, 454' right of centerline, up to 35' AGL/45' MSL. Multiple trees beginning 1391' from departure end of runway, 449' right of centerline, up to 55' AGL/86' MSL. Multiple trees beginning 2288' from departure end of runway, 291' left of centerline, up to 55' AGL/97' MSL.

GONZALES, LA

LOUISIANA RGNL

TAKE-OFF MINIMUMS: **Rwy 35**, 400-2 or std. with a min. climb of 220' per NM to 400.

GREENVILLE, MS

MID DELTA RGNL

DEPARTURE PROCEDURE: **Rwys 18L, 18R**, climb runway heading to 800 before turning.

NOTE: **Rwy 27**, 64' AGL tree 812' from departure end of runway, 392' left of centerline. 91' AGL tree, 2027' from departure end of runway, 460' right of centerline.

GREENWOOD, MS

GREENWOOD-LEFLORE (GWO)

AMDT 6 11349 (FAA)

TAKE-OFF MINIMUMS: **Rwy 5**, std. w/min. climb of 290' per NM to 900, or 1100-2½ for climb in visual conditions.

DEPARTURE PROCEDURE: **Rwy 5**, climb heading 050° to 900 before proceeding on course, or for climb in visual conditions, cross Greenwood-Leflore airport at or above 1100 before proceeding on course.

NOTE: **Rwy 18**, vehicles on roadway beginning 198' from DER, 540' left and right of centerline, up to 15' AGL/154' MSL. **Rwy 23**, bushes beginning 331' from DER, 372' right of centerline, up to 11' AGL/151' MSL. Trees beginning 407' from DER, 113' right of centerline, up to 82' AGL/222' MSL. Trees beginning 1035' from DER, 32' left of centerline, up to 112' AGL/252' MSL. **Rwy 36**, trees beginning 1033' from DER, 352' left of centerline, up to 95' AGL/240' MSL. Trees beginning 1037' from DER, 667' right of centerline, up to 45' AGL/190' MSL. **Rwy 5**, trees beginning 301' from DER, 241' left of centerline, up to 100' AGL/264' MSL. Trees beginning 775' from DER, 29' right of centerline, up to 100' AGL/419' MSL. Tower 2.5 NM from DER, 3842' left of centerline, up to 314' AGL/644' MSL.

31 MAY 2012 to 28 JUN 2012

31 MAY 2012 to 28 JUN 2012

12152

TAKE-OFF MINIMUMS AND (OBSTACLE) DEPARTURE PROCEDURES

TAKE-OFF MINIMUMS AND (OBSTACLE) DEPARTURE PROCEDURES

12152

GRENADA, MS

GRENADA MUNI

DEPARTURE PROCEDURE: **Rwys 4, 31**, climb to 700 before turning on course. **Rwys 13, 22**, climb to 800 before turning on course.

GULFPORT, MS

GULFPORT-BILOXI INTL (GPT)

AMDT 6 09183 (FAA)

TAKE-OFF MINIMUMS: **Rwy 36**, 300-1¼ or std. with a min. climb of 292' per NM to 300.

DEPARTURE PROCEDURE: **Rwy 36**, climb heading 013° to 700 before proceeding on course.

NOTE: **Rwy 14**, tree 1931' from DER, 627' left of centerline, 71' AGL/90' MSL. Pole 3354' from DER, 1068' right of centerline, 85' AGL/115' MSL. **Rwy 18**, trees beginning 924' from DER, 354' right of centerline, up to 84' AGL/98' MSL. Trees beginning 1383' from DER, 165' left of centerline, up to 52' AGL/71' MSL. Antenna 5411' from DER, 1579' left of centerline, 165' AGL/172' MSL. **Rwy 32**, trees beginning 1586' from DER, left and right of centerline, up to 79' AGL/93' MSL. **Rwy 36**, trees beginning 1391' from DER, 327' right of centerline, up to 82' AGL/96' MSL. Trees beginning 1593' from DER, 348' left of centerline, up to 82' AGL/96' MSL. Crane 4592' from DER, 2673' right of centerline, 142' AGL/151' MSL.

HAMMOND, LA

HAMMOND NORTHSHORE RGNL (HDC)

AMDT 1 10098 (FAA)

DEPARTURE PROCEDURE: **Rwy 31**, climb heading 312° to 700 before turning left.

NOTE: **Rwy 13**, trees beginning 1260' from DER, 125' left of centerline, up to 119' AGL/163' MSL. Trees beginning 1314' from DER, 186' right of centerline, up to 124' AGL/168' MSL. **Rwy 18**, antenna on building 844' from DER, 239' right of centerline, 22' AGL/66' MSL. Obstruction light on pole 1020' from DER, 141' right of centerline, 23' AGL/67' MSL. Trees beginning 1556' from DER, 430' left of centerline, up to 92' AGL/136' MSL. Trees beginning 1747' from DER, 64' right of centerline, up to 110' AGL/149' MSL. **Rwy 31**, trees beginning 216' from DER, 13' left of centerline, up to 109' AGL/158' MSL. Trees beginning 566' from DER, 386' right of centerline, up to 100' AGL/154' MSL. **Rwy 36**, tree 3072' from DER, 879' left of centerline, 73' AGL/127' MSL. Tree 3585' from DER, 1407' right of centerline, 102' AGL/151' MSL.

HATTIESBURG, MS

HATTIESBURG BOBBY L. CHAIN MUNI (HBG)

AMDT 1 09015 (FAA)

DEPARTURE PROCEDURE: **Rwy 31**, climb heading 309° to 900 before turning west.

NOTE: **Rwy 13**, numerous trees beginning 1184' from departure end of runway, 26' left of centerline, up to 111' AGL/251' MSL. Multiple trees beginning 2023' from departure end of runway, 49' right of centerline, up to 89' AGL/229'. **Rwy 31**, numerous trees beginning 189' from departure end of runway, 111' left of centerline, up to 103' AGL/253' MSL. Multiple trees beginning 894' from departure end of runway, 69' right of centerline, up to 84' AGL/234' MSL.

HATTIESBURG/LAUREL, MS

HATTIESBURG-LAUREL RGNL

DEPARTURE PROCEDURE: **Rwys 18, 36**, climb runway heading to 1000 before turning east.

NOTE: **Rwy 36**, 86' AGL tree 2117' from departure end of runway, 911' left of centerline.

HOLLY SPRINGS, MS

HOLLY SPRINGS-MARSHALL COUNTY

DEPARTURE PROCEDURE: **Rwy 36**, climb runway heading to 800 before turning left.

HOUMA, LA

HOUMA-TERREBONNE (HUM)

AMDT 5 09183 (FAA)

DEPARTURE PROCEDURE: **Rwy 30**, climb heading 304° to 600 before proceeding on course.

NOTE: **Rwy 12**, trees and equipment building beginning 86' from DER, 254' left of centerline, up to 40' AGL/44' MSL. Ground and tree beginning 220' from DER, 202' right of centerline, up to 29' AGL/33' MSL. **Rwy 18**, trees and poles beginning 923' from DER, 238' left of centerline, up to 100' AGL/109' MSL. Trees beginning 249' from DER, 345' right of centerline, up to 60' AGL/64' MSL. **Rwy 30**, trees beginning 802' from DER, 93' right of centerline, up to 60' AGL/64' MSL. Poles and road beginning 527' from DER, 427' right of centerline, up to 38' AGL/42' MSL. **Rwy 36**, antenna 1589' from DER, 882' left of centerline, 63' AGL/72' MSL. Trees beginning 2894' from DER, 971' right of centerline, up to 100' AGL/109' MSL.

INDIANOLA, MS

INDIANOLA MUNI (IDL)

AMDT 1 10266 (FAA)

DEPARTURE PROCEDURE: **Rwy 18**, climb heading 180° to 1800 before turning East. **Rwy 36**, climb heading 360° to 800 before turning East.

NOTE: **Rwy 18**, trees beginning 383' from DER, 75' left of centerline, up to 81' AGL/201' MSL. Trees beginning 385' from DER, 165' right of centerline, up to 90' AGL/210' MSL. **Rwy 36**, fence 37' from DER, 400' left of centerline, 6' AGL/129' MSL. Trees beginning 898' from DER, 684' right of centerline, up to 100' AGL/224' MSL. Trees beginning 1086' from DER, 576' left of centerline, up to 100' AGL/224' MSL.

31 MAY 2012 to 28 JUN 2012

31 MAY 2012 to 28 JUN 2012

12152

TAKE-OFF MINIMUMS AND (OBSTACLE) DEPARTURE PROCEDURES

TAKE-OFF MINIMUMS AND (OBSTACLE) DEPARTURE PROCEDURES

12152

JACKSON, MS

HAWKINS FIELD (HKS)

AMDT 1 10266 (FAA)

TAKE-OFF MINIMUMS: **Rwy 11**, 300-1¼ or std. w/min. climb of 230' per NM to 600. Alternatively, with standard takeoff minimums and a normal 200' per NM climb gradient, takeoff must occur no later than 1800 prior to DER.

DEPARTURE PROCEDURE: **Rwy 11**, climb heading 115° to 900 before proceeding on course. **Rwy 16**, climb heading 159° to 1400 before turning right. **Rwy 29**, climb heading 295° to 1400 before turning left. **Rwy 34**, climb heading 339° to 900 before proceeding on course.

NOTE: **Rwy 11**, trees beginning 1141' from DER, 33' right of centerline, up to 100' AGL/374' MSL. Trees beginning 460' from DER, 155' left of centerline, up to 100' AGL/406' MSL. Tower 5514' from DER, 1566' left of centerline, 164' AGL/483' MSL. **Rwy 16**, trees beginning 1023' from DER, 373' right of centerline, up to 100' AGL/438' MSL. Trees beginning 588' from DER, 27' left of centerline, up to 100' AGL/449' MSL. **Rwy 29**, hangar, 481' from DER, 357' right of centerline, 13' AGL/332' MSL. Light, 880' from DER, 255' left of centerline, 10' AGL/339' MSL. Antenna on hangar, 1065' from DER, 595' right of centerline, 40' AGL/362' MSL. Trees beginning 698' from DER, 186' left of centerline, up to 100' AGL/426' MSL. **Rwy 34** terrain 50' from DER, 316' right of centerline, 345' MSL. Trees, 2700' from DER, 884' left of centerline, up to 100' AGL/410' MSL.

JACKSON-EVERS INTL

TAKE-OFF MINIMUMS: **Rwy 16R**, 300-1 or std. with a min. climb of 280' per NM to 700.

JENNINGS, LA

JENNINGS (3R7)

AMDT 2A 10098 (FAA)

TAKE-OFF MINIMUMS: **Rwy 13**, 300-1 or std. with a min climb of 393' per NM to 300. **Rwys 17, 35**, NA.

NOTE: **Rwy 8**, multiple poles 1080' from DER, 260' left of centerline, 40' AGL/62' MSL. **Rwy 13**, trees beginning 690' from DER, 262' left of centerline, up to 116' AGL/141' MSL. Tank 3428' from DER, 1072' left of centerline, 156' AGL/181' MSL. Watertower, 3492' from DER, 1089' left of centerline, 172' AGL/197' MSL. Transmission line and trees beginning 766' from DER, 622' right of centerline, up to 96' AGL/119' MSL. **51Rwy 26**, trees 1080' from DER, 45' AGL/55' MSL. **Rwy 31**, fence 140' from DER, 15' AGL/32' MSL.

JONESBORO, LA

JONESBORO (F88)

ORIG 12152 (FAA)

NOTE: **Rwy 18**, trees beginning 211' from DER, 352' right of centerline, up to 100' AGL/349' MSL. Trees beginning 270' from DER, 462' left of centerline, up to 100' AGL/369' MSL. **Rwy 36**, trees beginning 200' from DER, 386' left of centerline, up to 100' AGL/339' MSL. Trees beginning 375' from DER, 502' right of centerline, up to 100' AGL/339' MSL.

KEESLER AFB (KBIX)

BILOXI, MS 09211

TAKE-OFF OBSTACLES: **Rwy 3**: Trees 977' from DER, 764' right of centerline, 62' AGL/70' MSL. Terrain 222' right of centerline, 19' MSL. **Rwy 21**: Trees 1903' from DER, 669' right of centerline, 71' AGL/102' MSL. Trees 1803' from DER, 658' left of centerline, 43' AGL/70' MSL. Multiple power poles 2670' from DER, 893' left of centerline, 65' AGL/109' MSL. Multiple power poles 3514' from DER, 119' right of centerline, 65' AGL/115' MSL. Terrain 6' from DER, 500' left of centerline 23' MSL.

KOSCIUSKO, MS

KOSCIUSKO-ATTALA COUNTY

NOTE: **Rwy 14**, trees 1054' from departure end of runway, 503' left of centerline, 100' AGL/559' MSL. Trees 1172' from departure end of runway, 555' right of centerline, 100' AGL/559' MSL. Terrain 18' from departure end of runway, 91' right of centerline, 473' MSL. Terrain 68' from departure end of runway, 485' right of centerline, 473' MSL. **Rwy 32**, trees 1676' from departure end of runway, 288' right of centerline, 100' AGL/619' MSL. Trees 1341' from departure end of runway, 231' left of centerline, 100' AGL/609' MSL. Terrain 129' from departure end of runway, 139' right of centerline, 502' MSL. Terrain 182' from departure end of runway, 532' right of centerline, 493' MSL. Terrain 352' from departure end of runway, 344' right of centerline, 496' MSL. Terrain 79' from departure end of runway, 254' left of centerline, 486' MSL. Terrain 525' from departure end of runway, 156' right of centerline, 496' MSL. Terrain 302' from departure end of runway, 49' left of centerline, 489' MSL.

LAFAYETTE, LA

LAFAYETTE RGNL (LFT)

AMDT 1A 08325 (FAA)

TAKE-OFF MINIMUMS: **CAUTION**: Unmarked balloon and cable to 15000' MSL in R-3807. **Rwy 4L**, 141/29NM, **Rwy 4R**, 140/28.8NM, **Rwy 11**, 141/29.5NM, **Rwy 22L**, 143/29.2NM, **Rwy 22R**, 142/29.2NM, **Rwy 29**, 142/28.8NM.

NOTE: **Rwy 4L**, fence beginning 2506' from departure end of runway, 682' left of centerline, up to 121' AGL/163' MSL. Multiple trees beginning 671' from departure end of runway, 307' left of centerline, up to 57' AGL/87' MSL. Obstruction light on windsock 155' from departure end of runway, 251' right of centerline, 38' AGL/58' MSL. **Rwy 4R**, multiple trees beginning 776' from departure end of runway, 111' left of centerline, up to 60' AGL/79' MSL. Multiple trees beginning 29' from departure end of runway, 269' right of centerline, up to 84' AGL/103' MSL. **Rwy 11**, multiple trees beginning 553' from departure end of runway 128' left of centerline, up to 81' AGL/91' MSL. Multiple trees beginning 523' from departure end of runway, 28' right of centerline, 72' AGL/82' MSL.

Rwy 22L, multiple trees beginning 2392' from departure end of runway, 4' left of centerline, up to 75' AGL/114' MSL. Multiple trees beginning 1853' from departure end of runway, 247' right of centerline, up to 96' AGL/135' MSL. **Rwy 22R**, tower 2545' from departure end of runway, 26' left of centerline, 104' AGL/142' MSL. Multiple trees, buildings, obstruction lights and antenna beginning 153' from departure end of runway, 270' right of centerline, up to 103' AGL/142' MSL. **Rwy 29**, multiple trees, towers and pole beginning 925' from departure end of runway, 5' left of centerline, up to 110' AGL/150' MSL. Multiple trees, towers, poles and obstruction light on antenna beginning 99' from departure end of runway, 70' right of centerline, up to 130' AGL/165' MSL.

31 MAY 2012 to 28 JUN 2012

31 MAY 2012 to 28 JUN 2012

12152

TAKE-OFF MINIMUMS AND (OBSTACLE) DEPARTURE PROCEDURES

TAKE-OFF MINIMUMS AND (OBSTACLE) DEPARTURE PROCEDURES

12152

LAKE CHARLES, LA

CHENNAULT INTL (CWF)

ORIG 10154 (FAA)

TAKE-OFF MINIMUMS: **Rwy 33**, 300-1¼ or std. w/min. climb of 205' per NM to 300. Alternatively, with standard take-off minimums and a normal 200'/NM climb gradient, take-off must occur no later than 1200' prior to DER.

NOTE: **Rwy 15**, trees beginning 1114' from DER, 670' left of centerline, up to 51' AGL/70' MSL. Trees beginning 1261' from DER, 380' right of centerline, up to 62' AGL/81' MSL. **Rwy 33**, tanks 5977' from DER, 1577' right of centerline, 156' AGL/170' MSL. Trees beginning 1763' from DER, 685' left of centerline, up to 71' AGL/85' MSL. Trees beginning 1202' from DER, 399' right of centerline, up to 52' AGL/71' MSL.

LAKE CHARLES RGNL (LCH)

ORIG 11125 (FAA)

NOTE: **Rwy 5**, antenna 38' from DER, 396' right of centerline, 8' AGL/23' MSL. Vehicle on road 457' from DER, 605' left of centerline, up to 15' AGL/34' MSL. Wire on pole 647' from DER, 530' left of centerline, 30' AGL/50' MSL. Transmission pole 707' from DER, 602' right of centerline, 42' AGL/57' MSL. Vehicle on road 710' from DER, 428' left of centerline, 15' AGL/33' MSL. Transmission pole 767' from DER, 531' left of centerline, 31' AGL/46' MSL. Transmission pole 825' from DER, 454' right of centerline, 32' AGL/47' MSL. Pole 862' from DER, 485' right of centerline, 18' AGL/38' MSL. Wire on pole 863' from DER, 485' right of centerline, 34' AGL/49' MSL. **Rwy 23**, multiple trees beginning 19' from DER, left and right of centerline, up to 73' AGL/87' MSL. Pole 1112' from DER, 130' left of centerline, 14' AGL/50' MSL. Poles beginning 631' from DER, 283' right of centerline, up to 22' AGL/44' MSL. **Rwy 33**, tree 1225' from DER, 622' left of centerline, 34' AGL/44' MSL.

LAUREL, MS

HESLER-NOBLE FIELD

DEPARTURE PROCEDURE: **Rwy 13**, climb runway heading to 500 before turning.

LEESVILLE, LA

LEESVILLE (L39)

ORIG 11293 (FAA)

NOTE: **Rwy 18**, tree 26' from DER, 78' left of centerline, 100' AGL/359' MSL. Trees beginning 12' from DER, 210' right of centerline, up to 100' AGL/389' MSL. **Rwy 36**, trees beginning 262' from DER, 396' left of centerline, 47' AGL/336' MSL. Trees beginning 180' from DER, 130' right of centerline, up to 58' AGL/347' MSL.

LEXINGTON, MS

C. A. MOORE

DEPARTURE PROCEDURE: **Rwy 19**, climb runway heading to 1000 before turning.

LOUISVILLE, MS

LOUISVILLE- WINSTON COUNTY (LMS)

AMDT 2A 08325 (FAA)

TAKE-OFF MINIMUMS: **Rwy 17**, 500-2¼ or std. with a min. climb of 400' per NM to 1100.

DEPARTURE PROCEDURE: **Rwy 17**, climb heading 170° to 1100 before turning left.

NOTE: **Rwy 17**, tower 1.7 NM from departure end of runway, 2209' left of centerline, 410' AGL/950' MSL.

MADISON, MS

BRUCE CAMPBELL FIELD (MBO)

AMDT 1 10098 (FAA)

TAKE-OFF MINIMUMS: **Rwy 35**, 300-2 or std. w/min. climb of 267' per NM to 700, or alternatively, with standard take-off minimums and a normal 200' per NM climb gradient, take-off must occur no later than 1400' prior to DER.

NOTE: **Rwy 17**, trees 524' from DER, 464' right of centerline, 100' AGL/399' MSL. **Rwy 35**, house 1324' from DER, 619' left of centerline, 20' AGL/349' MSL. Vehicle on road 2178' from DER, 389' left of centerline, up to 17' AGL/350' MSL.

MANSFIELD, LA

C E 'RUSTY' WILLIAMS (3F3)

ORIG 11013 (FAA)

NOTE: **Rwy 18**, trees beginning 1182' from DER, left and right of centerline, up to 100' AGL/459' MSL. **Rwy 36**, trees beginning 116' from DER, left and right of centerline, up to 100' AGL/439' MSL.

MANY, LA

HART (3R4)

ORIG-A 08185 (FAA)

TAKE-OFF MINIMUMS: **Rwy 12**, 600-3 or std. with a min. climb of 250' per NM to 900.

DEPARTURE PROCEDURE: **Rwy 12**, climb heading 117° to 1100 before proceeding on course.

NOTE: **Rwy 12**, trees beginning 1' from departure end of runway, 594' left to 598' right of centerline, up to 100' AGL/385' MSL. Powerline/poles beginning 1198' from departure end of runway, 309' right of centerline, up to 58' AGL/354' MSL. **Rwy 30**, trees beginning 74' from departure end of runway, 781' left to 509' right of centerline, up to 100' AGL/391' MSL. Powerline/pole 484' from departure end of runway, 318' right of centerline, 62' AGL/358' MSL.

MARKS, MS

SELFS

DEPARTURE PROCEDURE: **Rwy 2**, climb runway heading to 700 before turning right.

MARKSVILLE, LA

MARKSVILLE MUNI (MKV)

ORIG 11293 (FAA)

NOTE: **Rwy 4**, light pole 61' from DER, 459' right of centerline, 5' AGL/84' MSL. Power pole 287' from DER, 315' right of centerline, 35' AGL/111' MSL. Water tower 3870' from DER, 1134' left of centerline, 148' AGL/217' MSL. Tree 1504' from DER, 374' left of centerline, 88' AGL/164' MSL. Trees beginning 465' from DER, 148' right of centerline, up to 110' AGL/183' MSL. **Rwy 22**, trees beginning 248' from DER, 373' left of centerline, up to 100' AGL/173' MSL. Trees beginning 2571' from DER, 1008' right of centerline, up to 100' AGL/166' MSL.

31 MAY 2012 to 28 JUN 2012

31 MAY 2012 to 28 JUN 2012

12152

TAKE-OFF MINIMUMS AND (OBSTACLE) DEPARTURE PROCEDURES

TAKE-OFF MINIMUMS AND (OBSTACLE) DEPARTURE PROCEDURES

12152

MCCOMB, MS

MCCOMB/PIKE COUNTY/JOHN E. LEWIS
FIELD (MCB)
ORIG 09183 (FAA)

NOTE: **Rwy 15**, trees beginning 89' from departure end of runway, 91' right of centerline, up to 100' AGL/509' MSL. Trees beginning 476' from departure end of runway, 83' left of centerline, up to 100' AGL/475' MSL. **Rwy 33**, tree 1440' from departure end of runway, 49' left of centerline, 59' AGL/488' MSL.

MERIDIAN, MS

KEY FIELD

TAKE-OFF MINIMUMS: **Rwy 1**, 300-1 or std. w/ a min. climb of 290' per NM to 600. **Rwy 22**, 300-1½ or std. w/ a min. climb of 280' per NM to 700.

DEPARTURE PROCEDURE: **Rwy 4**, climb via heading 043° to 1100 before turning south.

NOTE: **Rwy 1**, antenna, vent on tank, and numerous trees beginning 323' from departure end of runway, 98' right of centerline, up to 100' AGL/463' MSL. Interstate road and numerous trees beginning 1196' from departure end of runway, 1' left of centerline, up to 100' AGL/403' MSL.

Rwy 4, stack, tree and numerous light poles beginning 406' from departure end of runway, 278' right of centerline, up to 133' AGL/433' MSL. Fence, railing on tank, and light pole beginning 34' from departure end of runway, 253' left of centerline, up to 35' AGL/330' MSL.

Rwy 19, antenna and tree beginning 482' from departure end of runway, 570' left of centerline, up to 100' AGL/395' MSL. Tree 1894' from departure end of runway, 934' right of centerline, 100' AGL/380' MSL. **Rwy 22**, numerous trees beginning 1621' from departure end of runway, 304' right of centerline, up to 100' AGL/529' MSL. Numerous trees beginning 2479' from departure end of runway, 30' left of centerline, up to 100' AGL/457' MSL.

MERIDIAN NAS (MC CAIN FIELD)

(KNMM)

MERIDIAN, MS 09295

Rwy 1R, 600-1½*

Rwy 19R, 600-2**

* Or standard with a minimum civil climb of 215 ft/NM to 600, minimum military climb of 210 ft/NM to 600.
** Or standard with minimum climb of 210 ft/NM to 600.

TAKE-OFF OBSTACLES: **Rwy 1R**: Multiple trees 95' AGL/399' MSL, 2708' from DER, 1137' left of centerline. Multiple trees 95' AGL/399' MSL, 3147' from DER, 950' left of centerline. Multiple trees 75' AGL/474' MSL, 6025' from DER, 2057' left of centerline. Multiple trees 75' AGL/499' MSL, 6896' from DER, 2315' left of centerline. **Rwy 19R**: Trees 95' AGL/414' MSL, 4831' from DER, 875' left of centerline. **Rwy 19R**: Trees 100' AGL/499' MSL, 9429' from DER, 1203' right of centerline. **Rwy 10**: Terrain 399' MSL, 1344' from DER, 253' right of centerline. Multiple trees 90' AGL/399' MSL, 3235' from DER, 371' right of centerline. Multiple trees 85' AGL/424' MSL, 3692' from DER, 458' left of centerline.

MINDEN, LA

MINDEN (MNE)
ORIG 10322 (FAA)

NOTE: **Rwy 1**, trees beginning 2' from DER, 134' left of centerline, up to 116' AGL/383' MSL. Trees beginning 791' from DER, 68' right of centerline, up to 104' AGL/383' MSL. **Rwy 19**, trees beginning 232' from DER, 46' left of centerline, up to 103' AGL/352' MSL. Trees beginning 192' from DER, 12' right of centerline, up to 116' AGL/365' MSL. Poles beginning 1234' from DER, 226' right of centerline, up to 69' AGL/318' MSL.

MONROE, LA

MONROE RGNL

DEPARTURE PROCEDURE: **Rwy 22**, climb via heading 222° to 900 before turning west. **Rwy 32**, climb via heading 317° to 900 before turning west. **Rwy 36**, climb via heading 357° to 900 before turning west.

NOTE: **Rwy 4**, tree 3535' from departure end of runway, 1136' left of centerline, 98' AGL/177' MSL. Tree 995' from departure end of runway, 726' left of centerline, 66' AGL/142' MSL. Tree 2423' from departure end of runway, 903' right of centerline, 65' AGL/141' MSL. Tree 1765' from departure end of runway, 773' right of centerline, 44' AGL/120' MSL. **Rwy 14**, tree 1409' from departure end of runway, 770' left of centerline, 96' AGL/162' MSL. **Rwy 18**, tree 1614' from departure end of runway, 242' right of centerline, 68' AGL/137' MSL. Tree 1649' from departure end of runway, 45' right of centerline, 71' AGL/140' MSL. Tree 1659' from departure end of runway, 112' left of centerline, 77' AGL/146' MSL. Tree 1696' from departure end of runway, 619' left of centerline, 72' AGL/138' MSL. Tree 2149' from departure end of runway, 102' right of centerline, 76' AGL/145' MSL. **Rwy 22**, sign 99' from departure end of runway 459' right of centerline, 14' AGL/83' MSL. Tree 2613' from departure end of runway, 1052' right of centerline, 104' AGL/170' MSL. **Rwy 32**, tree 2361' from departure end of runway, 7' left of centerline, 77' AGL/160' MSL. Tree 1781' from departure end of runway, 342' right of centerline, 66' AGL/149' MSL. Tree 1709' from departure end of runway, 302' right of centerline, 78' AGL/161' MSL. Tree 2103' from departure end of runway, 325' left of centerline, 73' AGL/156' MSL. Light pole 384' from departure end of runway, 491' left of centerline, 18' AGL/97' MSL. **Rwy 36**, antenna 3728' from departure end of runway, 599' right of centerline, 107' AGL/190' MSL. Tower 3526' from departure end of runway, 478' right of centerline, 100' AGL/179' MSL. Tree 2756' from departure end of runway, 129' right of centerline, 68' AGL/151' MSL.

31 MAY 2012 to 28 JUN 2012

31 MAY 2012 to 28 JUN 2012

12152

TAKE-OFF MINIMUMS AND (OBSTACLE) DEPARTURE PROCEDURES

TAKE-OFF MINIMUMS AND (OBSTACLE) DEPARTURE PROCEDURES

12152

NATCHEZ, MS

HARDY-ANDERS FIELD NATCHEZ-ADAMS
COUNTY (HEZ)
ORIG 07354 (FAA)

NOTE: **Rwy 13**, multiple trees beginning 1445' from departure end of runway, 226' left of centerline, up to 101' AGL/380' MSL. Multiple trees beginning 17' from departure end of runway, 301' right of centerline, up to 99' AGL/334' MSL. **Rwy 18**, multiple trees beginning 1060' from departure end of runway, 162' left of centerline, up to 93' AGL/372' MSL. Multiple trees beginning 788' from departure end of runway, 374' right of centerline, up to 90' AGL/369' MSL. **Rwy 31**, multiple trees beginning 1320' from departure end of runway, 736' left of centerline, up to 105' AGL/364' MSL. Trees 2129' from departure end of runway, 813' right of centerline, 81' AGL/340' MSL. **Rwy 36**, multiple trees beginning 935' from departure end of runway, 327' left of centerline, up to 47' AGL/306' MSL. Trees 473' from departure end of runway, 517' right of centerline, 79' AGL/338' MSL.

NATCHITOCHEs, LA

NATCHITOCHEs RGNL (IER)
AMDT 6 09071 (FAA)

TAKE-OFF MINIMUMS: **Rwy 25**, 300-1% or std. with min. climb of 336' per NM to 600.

NOTE: **Rwy 17**, building, pole, and trees beginning 90' from DER, 359' right of centerline, up to 83' AGL/204' MSL. **Rwy 25**, tower 1.29 NM from DER, 633' right of centerline, 205' AGL/385' MSL. **Rwy 35**, light pole 1975' from DER, 418' right of centerline, 75' AGL/180' MSL. Trees beginning 1007' from DER, 311' right of centerline, up to 72' AGL/188' MSL.

NEW ALBANY, MS

NEW ALBANY-UNION COUNTY

TAKE-OFF MINIMUMS: **Rwy 18**, std. w/ min. climb of 245' per NM to 900, or 500-2¼ w/ min. climb of 207' per NM to 1000, or alternatively, w/ std. takeoff minimums and a normal 200'/NM climb gradient, takeoff must occur no later than 1500' prior to departure end of runway, or 800-2½ for climb in visual conditions.

DEPARTURE PROCEDURE: **Rwy 18**, for climb in visual conditions: Cross New Albany-Union County airport at or above 1100 before proceeding on course.

NOTE: **Rwy 18**, multiple trees beginning 146' from departure end of runway, 158' left of centerline, up to 100' AGL/519' MSL. Multiple trees beginning 387' from departure end of runway, 565' right of centerline, up to 100' AGL/499' MSL. **Rwy 36**, multiple trees beginning 467' from departure end of runway, 524' left of centerline, up to 100' AGL/499' MSL. Multiple trees beginning 2000' from departure end of runway, on centerline, up to 100' AGL/546' MSL.

NEWIBERIA, LA

ACADIANA RGNL

TAKE-OFF MINIMUMS: CAUTION: Unmarked balloon and cable up to 15000' in R-3807. **Rwy 16**, 138/17.2 NM. **Rwy 34**, 136/17.2 NM.

NOTE: **Rwy 16**, trees 41' from departure end of runway, 497' right of centerline, 12' AGL/32' MSL.

NEW ORLEANS, LA

LAKEFRONT (NEW)
AMDT 1 11013 (FAA)

TAKE-OFF MINIMUMS: **Rwy 18R**, std. w/ min. climb of 204' per NM to 1400, or alternatively, with standard takeoff minimums and a normal 200' per NM climb gradient, takeoff must occur no later than 1700' prior to DER.

DEPARTURE PROCEDURE: **Rwy 9**, climb heading 087° to 1400 before turning right. **Rwys 18L, 18R**, climb heading 177° to 1400 before turning left.

NOTE: **Rwy 9**, obstruction light on hangar 80' from DER, 419' right of centerline, 48' AGL/52' MSL. Obstruction lights on hangars, vehicles on road, and light poles beginning 288' from DER, 162' left of centerline, up to 68' AGL/72' MSL. Trees beginning 840' from DER, 222' right of centerline, up to 69' AGL/73' MSL. Light pole 2491' from DER, 254' left of centerline, 68' AGL/72' MSL. **Rwy 18L**, antenna 334' from DER, 418' left of centerline, 38' AGL/42' MSL. Rotating beacon 1451' from DER, 569' left of centerline, 94' AGL/98' MSL. Obstruction light on hangar 2035' from DER, 35' right of centerline, 58' AGL/62' MSL. **Rwy 18R**, obstruction light, pole, tree, vehicles on road, and train on tracks beginning 101' from DER, 175' left centerline, up to 38' AGL/45' MSL. Obstruction light 106' from DER, on centerline, 12' AGL/19' MSL. Vehicles on road 296' from DER, on centerline, 15' AGL/22' MSL. Train on tracks 474' from DER, on centerline, 23' AGL/35' MSL. Obstruction lights beginning 484' from DER, 504' right of centerline, up to 40' AGL/47' MSL. Tree 677' from DER, 115' right of centerline, 32' AGL/39' MSL. Poles beginning 709' from DER, 524' right of centerline, up to 44' AGL/51' MSL. Pole, elevator, obstruction light on silo, and building beginning 1427' from DER, 421' right of centerline, up to 87' AGL/92' MSL. Antenna 2817' from DER, 953' left of centerline, 105' AGL/101' MSL. Tower 2943' from DER, 727' left of centerline, 103' AGL/100' MSL. Multiple poles and towers beginning 3165' from DER, left and right of centerline, up to 106' AGL/111' MSL. Tower 2.3 NM from DER, 3397' left of centerline, 369' AGL/373' MSL. **Rwy 27**, boats 300' from DER, left to right of centerline, up to 50' MSL. Obstruction lights on seawall 279' from DER, left to right of centerline, up to 11' AGL/15' MSL. **Rwy 36L**, pier 63' from DER, 7' right of centerline, 6' AGL/10' MSL. **Rwy 36R**, boats 350' from DER, left to right of centerline, up to 50' MSL.

31 MAY 2012 to 28 JUN 2012

31 MAY 2012 to 28 JUN 2012

12152

TAKE-OFF MINIMUMS AND (OBSTACLE) DEPARTURE PROCEDURES

TAKE-OFF MINIMUMS AND (OBSTACLE) DEPARTURE PROCEDURES

12152

NEW ORLEANS, LA (CON'T)

LOUIS ARMSTRONG NEW ORLEANS INTL

NOTE: Rwy1, multiple vehicles on roads beginning 3' from departure end of runway, 437' right of centerline, up to 26' AGL/28' MSL. Multiple trees beginning 493' from departure end of runway, 542' right of centerline, up to 38' AGL/40' MSL. Multiple poles beginning 831' from departure end of runway, 583' left of centerline, up to 34' AGL/36' MSL. Multiple signs beginning 906' from departure end of runway, 235' right of centerline, up to 49' AGL/51' MSL. Multiple buildings beginning 1369' from departure end of runway, 679' right of centerline, up to 48' AGL/50' MSL. Multiple trees beginning 1555' from departure end of runway, 574' left of centerline up to 45' AGL/47' MSL. Antenna 1888' from departure end of runway, 692' right of centerline, 49' AGL/51' MSL. Obstruction light 1822' from departure end of runway, 834' right of centerline, 64' AGL/66' MSL. Crane 2412' from departure end of runway, 487' left of centerline, 81' AGL/83' MSL. Rwy 6, multiple trees beginning 727' from departure end of runway, 314' right of centerline, up to 62' AGL/63' MSL. Multiple trees beginning 1883' from departure end of runway, 717' left of centerline, up to 58' AGL/59' MSL. Building 2887' from departure end of runway, 553' right of centerline, 105' AGL/105' MSL. Rwy 10, obstruction light 623' from departure end of runway, 620' right of centerline, 21' AGL/25' MSL. Pole 936' from departure end of runway, 663' right of centerline, 25' AGL/29' MSL. Multiple trees beginning 1051' from departure end of runway, 37' left of centerline, up to 96' AGL/100' MSL. Multiple trees beginning 1919' from departure end of runway, 157' right of centerline, up to 81' AGL/85' MSL. Rwy 19, vehicle on road 201' from departure end of runway, 458' left of centerline, 29' AGL/30' MSL. Sign 708' from departure end of runway, 688' left of centerline, 38' AGL/39' MSL. Rod on building 664' from departure end of runway, 249' left of centerline, 23' AGL/24' MSL. Pole 1124' from departure end of runway, 635' left of centerline, 31' AGL/32' MSL. Multiple poles beginning 1358' from departure end of runway, 420' right of centerline, up to 46' AGL/47' MSL. Tree 2057' from departure end of runway, 881' left of centerline, 67' AGL/68' MSL. Multiple trees beginning 2604' from departure end of runway, 622' right of centerline, up to 85' AGL/86' MSL. Ship 4166' from departure end of runway, on centerline, 152' AGL/153' MSL. Rwy 24, obstruction light 2973' from departure end of runway, 415' left of centerline, 89' AGL/89' MSL. Rwy 28, tree 1265' from departure end of runway, 748' left of centerline, 58' AGL/59' MSL. Multiple trees beginning 1541' from departure end of runway, 550' right of centerline, up to 65' AGL/66' MSL.

NEW ORLEANS NAS JRB (ALVIN CALLENDER FLD) (KNBG)

NEW ORLEANS, LA. 09239

DEPARTURE PROCEDURE: Rwy 4, Diverse departures authorized 044°CW 224°. Right turn to departure heading only. Rwy 22, Diverse departures authorized 044°CW 314°. Rwy 32, Diverse departures authorized 140°CW 320°left turn to departure heading only.

TAKE-OFF OBSTACLES: Rwy 4: Building 304' from DER, 568' right of centerline, 39' AGL/38' MSL. Rwy 14: Trees 729' from DER, 246' right of centerline, 33' AGL/32' MSL. Crane 3808' from DER, 1061' right of centerline, 181' AGL/180' MSL. Mississippi River shipping channel, starting 6042' from DER, vessels up to 180' MSL. Rwy 32: Interoceanal waterway shipping channel, starting 5859' from DER, vessels up to 160' MSL. Crane 6091' from DER, 1317' right of centerline, 172' MSL.

NEW ROADS, LA

FALSE RIVER RGNL (HZR) ORIG 08157 (FAA)

NOTE: Rwy 36, fence 97' from departure end of runway, 248' right of centerline, 5' AGL/44' MSL. Pole 1263' from departure end of runway, 215' left of centerline, 45' AGL/84' MSL. Trees beginning 1268' from departure end of runway, 127' right of centerline, up to 110' AGL/159' MSL. Trees beginning 2436' from departure end of runway, 26' left of centerline, up to 127' AGL/176' MSL. Rwy 18, road beginning 86' from departure end of runway, 398' right of centerline, up to 15' AGL/49' MSL. Fence 220' from departure end of runway, 362' right of centerline, 6' AGL/39' MSL.

OAKDALE, LA

ALLEN PARISH

NOTE: Rwy 18, trees 400' from departure end of runway, 260' left of centerline, 30' AGL/134' MSL. Rwy 36, trees 1300' from departure end of runway, on centerline, 50' AGL/159' MSL.

OKOLONA, MS

OKOLONA MUNI-RICHARD STOVALL FIELD DEPARTURE PROCEDURE: Rwys 18, 36, climb runway heading to 800 before turning westbound.

OLIVE BRANCH, MS

OLIVE BRANCH

TAKE-OFF MINIMUMS: Rwy 18, 400-1 or std. with a min. climb of 350' per NM to 800. DEPARTURE PROCEDURE: Rwy 18, climb runway heading to 800 before turning east.

31 MAY 2012 to 28 JUN 2012

31 MAY 2012 to 28 JUN 2012

12152

TAKE-OFF MINIMUMS AND (OBSTACLE) DEPARTURE PROCEDURES

TAKE-OFF MINIMUMS AND (OBSTACLE) DEPARTURE PROCEDURES

12152

OPELOUSAS, LA

ST. LANDRY PARISH-AHART FIELD (OPL)
AMDT 1 12152 (FAA)

TAKE-OFF MINIMUMS: **Rwy 18**, 300-1¼ or std. w/min. climb of 261' per NM to 400.

NOTE: **Rwy 6**, vehicles on road 499' from DER, on centerline, up to 15' AGL/89' MSL. Buildings 94' from DER, 367' left of centerline, 25' AGL/99' MSL. Trees beginning 241' from DER, 274' left of centerline, up to 100' AGL/179' MSL. Trees beginning 909' from DER, 341' right of centerline, up to 100' AGL/174' MSL. Buildings 977' from DER, 710' right of centerline, 25' AGL/104' MSL. Poles beginning 1219' from DER, 626' right of centerline, 50' AGL/124' MSL. **Rwy 18**, trees beginning 132' from DER, 271' right of centerline, up to 100' AGL/155' MSL. Trees beginning 383' from DER, 358' left of centerline, up to 100' AGL/169' MSL. Tower 6046' from DER, 895' left of centerline, 207' AGL/269' MSL. Buildings 1072' from DER, 503' left of centerline, 25' AGL/99' MSL. Pole 2581' from DER, 443' left of centerline, 78' AGL/147' MSL. Vehicles on road 396' from DER, right and left of centerline, 15' AGL/89' MSL. **Rwy 24**, vehicles on road 255' from DER, on centerline, 15' AGL/84' MSL. Trees beginning 151' from DER, 311' left of centerline, up to 100' AGL/169' MSL. Buildings 345' from DER, 551' left of centerline, 25' AGL/94' MSL. Poles beginning 505' from DER, 394' left of centerline, 50' AGL/119' MSL. Trees beginning 254' from DER, 220' right of centerline, 100' AGL/169' MSL. Buildings 385' from DER, 269' right of centerline, 25' AGL/94' MSL. Poles beginning 527' from DER, 299' right of centerline, 50' AGL/119' MSL. **Rwy 36**, trees beginning 823' from DER, right and left of centerline, up to 100' AGL/158' MSL. Pole 1116' from DER, 147' right of centerline, 35' AGL/104' MSL.

OXFORD, MS

UNIVERSITY-OXFORD

TAKE-OFF MINIMUMS: **Rwy 9**, 300-1 or std. with a min. climb of 400' per NM to 700.

DEPARTURE PROCEDURE: **Rwy 9**, climb runway heading to 900 before turning.

PASCAGOULA, MS

TRENT LOTT INTL (PQL)

AMDT 1 11237 (FAA)

TAKE-OFF MINIMUMS: **Rwy 17**, 300-1¼ or std. w/min. climb of 226' per NM to 400, or alternatively, with standard takeoff minimums and a normal 200' per NM climb gradient, takeoff must occur no later than 1600' prior to DER. **Rwy 35**, std. w/min. climb of 217' per NM to 1000 or 900-2½ for climb in visual conditions. DEPARTURE PROCEDURE: **Rwy 35**, for climb in visual conditions: cross Trent Lott Intl Airport at or above 800' MSL before proceeding on course.

NOTE: **Rwy 17**, trees beginning 1622' from DER, 46' left of centerline, up to 64' AGL/71' MSL. Tree 2298' from DER, 77' right of centerline, 71' AGL/80' MSL. Transmission tower 3912' from DER, 1412' left of centerline, 112' AGL/121' MSL. Sign 5417' from DER, 1141' right of centerline, 159' AGL/170' MSL. **Rwy 35**, tree 2997' from DER, 1162' right of centerline, 79' AGL/93' MSL.

PATTERSON, LA

HARRY P. WILLIAMS MEMORIAL

TAKE-OFF MINIMUMS: **CAUTION**: unmarked balloon and cable to 15000 in R-3807. **Rwy 6**, 2907/17.6 NM. **Rwy 24**, 2877/18.2 NM.

NOTE: **Rwy 24**, tree 1262' from departure end of runway, 452' right of centerline, 95' AGL/102' MSL.

PHILADELPHIA, MS

PHILADELPHIA MUNI (MPE)

AMDT 2 09295

NOTE: **Rwy 18**, trees beginning 35' from DER, 58' left of centerline and 276' right of centerline, up to 100' AGL/585' MSL. **Rwy 36**, trees beginning 184' from DER, 370' right of centerline, up to 75' AGL/494' MSL. Trees beginning 2500' from DER, 51' right of centerline 136' AGL/535' MSL.

PICAYUNE, MS

PICAYUNE MUNI (MJD)

ORIG 08269 (FAA)

DEPARTURE PROCEDURE: **Rwy 36**, climb heading 359° to 800 before proceeding on course.

NOTE: **Rwy 18**, trees and bushes beginning 76' from departure end of runway, 18' left of centerline, up to 20' AGL/69' MSL. Trees and bushes beginning 211' from departure end of runway, 182' right of centerline, up to 28' AGL/77' MSL. **Rwy 36**, pole, trees, and bushes beginning 969' from departure end of runway, 183' left of centerline, up to 94' AGL/144' MSL. Pole, bush, and trees beginning 63' from departure end of runway, 74' right of centerline, up to 97' AGL/143' MSL.

POLK AAF (KPOE),

FORT POLK, LAORIG, 11125

TAKE-OFF OBSTACLES: **Rwy 16**, Windssock 2212' from DER, 534' left of centerline, 335' MSL. Trees beginning 2284' from DER, 1004' left of centerline, up to 364' MSL. Trees beginning 3223' from DER, 1193' right of centerline, up to 365' MSL. **Rwy 34**, Trees beginning 2305' from DER, 470' left of centerline, up to 80' AGL/402' MSL. Trees beginning 2866' from DER, 1193' right of centerline, up to 449' MSL.

PRENTISS, MS

PRENTISS-JEFFERSON DAVIS COUNTY

(M43)

ORIG 08269 (FAA)

NOTE: **Rwy 12**, poles and trees beginning 168' from DER, 256' left of centerline, up to 85' AGL/544' MSL. Trees beginning 231' from DER, 264' right of centerline, up to 72' AGL/511' MSL. **Rwy 30**, vehicle on road and trees beginning 91' from DER, 110' left of centerline, up to 64' AGL/513' MSL. Trees beginning 673' from DER, 360' right of centerline, up to 81' AGL/530' MSL.

31 MAY 2012 to 28 JUN 2012

31 MAY 2012 to 28 JUN 2012

12152

TAKE-OFF MINIMUMS AND (OBSTACLE) DEPARTURE PROCEDURES



12152

RAYMOND, MS

JOHN BELL WILLIAMS (JVW)

AMDT 4 11237 (FAA)

DEPARTURE PROCEDURE: **Rwy 12**, climb via heading 124° to 2600 before proceeding on course.

Rwy 30, climb via heading 304° to 1600 before proceeding on course.

NOTE: **Rwy 12**, trees beginning 1' from DER, 132' right of centerline, up to 100' AGL/379' MSL. Trees beginning 1753' from DER, 788' left of centerline, up to 100' AGL/359' MSL. **Rwy 30**, pole 1522' from DER, 533' right of centerline, 57' AGL/287' MSL. Trees beginning 593' from DER, 426' right of centerline, up to 100' AGL/339' MSL. Trees beginning 36' from DER, 163' left of centerline, up to 100' AGL/349' MSL.

RAYVILLE, LA

JOHN H HOOKS JR MEMORIAL (M79)

ORIG 09071 (FAA)

TAKE-OFF MINIMUMS: **Rwys 9, 27**, NA-Environmental.

NOTE: **Rwy 18**, building 104' from DER, 364' right of centerline, 22' AGL/101' MSL. Trees beginning 442' from DER, 230' left of centerline, up to 100' AGL/174' MSL. Trees beginning 1874' from DER, 972' right of centerline, up to 100' AGL/146' MSL. **Rwy 36**, trees beginning 20' from DER, 328' right of centerline, up to 100' AGL/156' MSL. Trees beginning 900' from DER, 300' left of centerline, up to 100' AGL/156' MSL. Trees beginning 1973' from DER, from left to right of centerline, up to 100' AGL/178' MSL.

RESERVE, LA

ST JOHN THE BAPTIST PARISH (1L0)

ORIG 09127 (FAA)

TAKE-OFF MINIMUMS: **Rwy 17**, 300-1¼ or std. w/ min. climb of 230' per NM to 400.

DEPARTURE PROCEDURE: **Rwy 17**, climb heading 170° to 1400 before turning right.

NOTE: **Rwy 17**, Tower 2012' from DER, 648' right of centerline, 115' AGL/124' MSL. Tower 2116' from DER, 783' right of centerline, 104' AGL/115' MSL. Elevator 1.5 NM from DER, 117' right of centerline, 250' AGL/265' MSL. **Rwy 35**, trees beginning 1' from DER, 401' left of centerline, up to 100' AGL/104' MSL. Trees beginning 1503' from DER, 705' left of centerline, up to 88' AGL/92' MSL. Trees beginning 1' from DER, 404' right of centerline, up to 100' AGL/104' MSL. Trees beginning 194' from DER, 62' right of centerline, up to 87' AGL/91' MSL.

RIPLEY, MS

RIPLEY

TAKE-OFF MINIMUMS: **Rwy 3**, 300-1¼ or std. w/ min. climb of 233' per NM to 800, or alternatively, w/ std. takeoff minimums and a normal 200'/NM climb gradient, takeoff must occur no later than 2100' prior to departure end of runway.

DEPARTURE PROCEDURE: **Rwy 21**, climb heading 213° to 1100 before turning left.

NOTE: **Rwy 3**, multiple trees beginning 774' from departure end of runway, 189' left of centerline, up to 100' AGL/569' MSL. Multiple trees beginning 1485' from departure end of runway, 331' left of centerline, up to 100' AGL/576' MSL. Multiple trees beginning 1.2 NM from departure end of runway, 1852' right of centerline, up to 100' AGL/689' MSL. Multiple trees beginning 1.2 NM from departure end of runway, 9' left of centerline, up to 100' AGL/669' MSL. Multiple trees beginning 1.4 NM from departure end of runway, 2100' right of centerline, up to 100' AGL/699' MSL. **Rwy 21**, multiple trees beginning 198' from departure end of runway, 189' left of centerline, up to 100' AGL/519' MSL. Multiple trees beginning 333' from departure end of runway, 307' right of centerline, up to 100' AGL/519' MSL.

RUSTON, LA

RUSTON RGNL (RSN)

ORIG 11181 (FAA)

NOTE: **Rwy 18**, rising terrain beginning 197' from DER, 259' right of centerline, up to 325' MSL. Trees beginning 123' from DER, 78' left of centerline, up to 100' AGL/411' MSL. Fences beginning 617' from DER, 234' left of centerline, up to 9' AGL/330' MSL. Vehicles on road beginning 652' from DER, 291' left of centerline, up to 18' AGL/339' MSL. Pole 1183' from DER, 516' right of centerline, 25' AGL/346' MSL. Trees beginning 1193' from DER, 23' right of centerline, up to 100' AGL/429' MSL. **Rwy 36**, rising terrain and trees beginning 69' from DER, 290' right of centerline, up to 100' AGL/349' MSL. Trees beginning 2308' from DER, 195' left of centerline, up to 100' AGL/389' MSL.

31 MAY 2012 to 28 JUN 2012

31 MAY 2012 to 28 JUN 2012

12152



TAKE-OFF MINIMUMS AND (OBSTACLE) DEPARTURE PROCEDURES

12152

SHREVEPORT, LA

SHREVEPORT DOWNTOWN (DTN)

AMDT 3A 11069 (FAA)

TAKE-OFF MINIMUMS: **Rwy 23**, 300-1½ or std. w/ min. climb of 215' per NM to 500. **Rwy 32**, std. w/ min. climb of 215' per NM to 2700.

DEPARTURE PROCEDURE: **Rwy 23**, climb heading 230° to 800 before turning left.

NOTE: **Rwy 5**, trees 102' from DER, 137' right of centerline, up to 80' AGL/245' MSL. Trees 151' from DER, 247' left of centerline, up to 80' AGL/230' MSL. **Rwy 14**, building 24' from DER, 466' right of centerline, 12' AGL/191' MSL. Barge 1502' from DER, left and right of centerline, 60' AGL/238' MSL. Trees 1626' from DER, 25' right of centerline, up to 100' AGL/281' MSL. Trees 497' from DER, 73' left of centerline, up to 100' AGL/279' MSL. **Rwy 23**, rod on hanger 24' from DER, 304' left of centerline, 30' AGL/204' MSL. Vehicle on road 180' from DER, left and right of centerline, 15' AGL/188' MSL. Trees 734' from DER, 278' left of centerline, up to 80' AGL/229' MSL. Tower 1.2 NM from DER, 1698' right of centerline, 203' AGL/363' MSL. Tower 1.2 NM from DER, 901' right of centerline, 197' AGL/365' MSL. Pole 3891' from DER, 196' right of centerline, 125' AGL/295' MSL. **Rwy 32**, fence 12' from DER, 242' right of centerline, 10' AGL/180' MSL. Vehicles on road 71' from DER, left and right of centerline, up to 15' AGL/185' MSL. Tree 282' from DER, 556' right of centerline, 80' AGL/249' MSL. Trees beginning 373' from DER, 411' left of centerline, up to 90' AGL/262' MSL. Barge 1164' from DER, left and right of centerline, 60' AGL/238' MSL. Trees beginning 2029' from DER, 51' left of centerline, up to 110' AGL/267' MSL.

SHREVEPORT RGNL

TAKE-OFF MINIMUMS: **Rwy 5**, std. w/ a min. climb of 233' per NM to 900 or 900-2½ for climb in visual conditions.

DEPARTURE PROCEDURE: **Rwy 5**, for climb in visual conditions cross Shreveport Rgnl Airport at or above 1000 before proceeding on course.

NOTE: **Rwy 5**, multiple trees beginning 1711' from departure end of runway, 435' right of centerline, up to 80' AGL/299' MSL. Tree 1985' from departure end of runway, 475' left of centerline, 60' AGL/279' MSL. **Rwy 23**, terrain 110' from departure end of runway, 471' right of centerline, 240' MSL. Multiple trees beginning 3685' from departure end of runway, 319' right of centerline, up to 80' AGL/344' MSL. Multiple trees beginning 2123' from departure end of runway, 187' left of centerline, up to 97' AGL/357' MSL. **Rwy 14**, multiple poles, antennas, and trees beginning 458' from departure end of runway, 205' right of centerline, up to 32' AGL/254' MSL. Multiple poles, trees, and railroad beginning 886' from departure end of runway, 9' left of centerline, up to 100' AGL/346' MSL.

SLIDELL, LA

SLIDELL (ASD)

ORIG 11181 (FAA)

NOTE: **Rwy 18**, trees beginning 126' from DER, 103' left and right of centerline, up to 100' AGL/129' MSL. Bush 38' from DER, 422' left of centerline, 1' AGL/29' MSL. **Rwy 36**, tree 89' from DER, 460' right of centerline, 22' AGL/47' MSL.

SPRINGHILL, LA

SPRINGHILL (SPH)

ORIG 11237 (FAA)

NOTE: **Rwy 18**, trees beginning 184' from DER, 78' right of centerline, up to 117' AGL/333' MSL. Trees beginning 272' from DER, 372' left of centerline, up to 100' AGL/313' MSL. **Rwy 36**, trees beginning 56' from DER, 49' right of centerline, up to 99' AGL/301' MSL. Trees beginning 859' from DER, 577' left of centerline, up to 111' AGL/317' MSL.

STARKVILLE, MS

GEORGE M. BRYAN

NOTE: **Rwy 18**, multiple trees beginning 52' from departure end of runway, 395' right of centerline up to 79' AGL/378' MSL. Trees 1037' from departure end of runway, 463' left of centerline, 45' AGL/365' MSL. Tower 5406' from departure end of runway, 402' left of centerline, 165' AGL/464' MSL. **Rwy 36**, windsock and trees beginning 24' from departure end of runway, 340' right of centerline up to 110' AGL/429' MSL. Trees 170' from departure end of runway, 323' left of centerline, 67' AGL/376' MSL.

OKITIBBEHA (M51)

ORIG 09267 (FAA)

NOTE: **Rwy 13**, trees 117' from DER, 199' right of centerline, up to 100' AGL/359' MSL. Trees 207' from DER, 103' left of centerline, up to 100' AGL/359' MSL. Vehicle on road 28' from DER, on centerline, 15' AGL/265' MSL. **Rwy 18**, trees beginning 76' from DER, left and right of centerline, up to 100' AGL/379' MSL. **Rwy 31**, trees beginning 123' from DER, 372' left of centerline, up to 100' AGL/369' MSL. Trees beginning 378' from DER, right and left of centerline, up to 100' AGL/369' MSL. **Rwy 36**, trees beginning 242' from DER, 466' right of centerline, up to 100' AGL/359' MSL. Trees beginning 1190' from DER, left and right of centerline, up to 100' AGL/349' MSL.

SULPHUR, LA

SOUTHLAND FIELD (UXL)

ORIG 09071 (FAA)

NOTE: **Rwy 15**, numerous trees and poles beginning 200' from DER, left and right of centerline, up to 63' AGL/72' MSL. Tree 862' from DER, 494' right of centerline, 100' AGL/114' MSL. **Rwy 33**, numerous trees and poles beginning 64' from DER, left and right of centerline, up to 38' AGL/47' MSL. Tree 1849' from DER, 647' left of centerline, 100' AGL/114' MSL.

TALLULAH, LA

VICKSBURG TALLULAH RGNL

NOTE: **Rwys 18, 36** cross departure end of runway at or above 35' AGL/121' MSL. **Rwy 18**, tree 1610' from departure end of runway, 922' left of centerline, 120' AGL/203' MSL.

12152

TAKE-OFF MINIMUMS AND (OBSTACLE) DEPARTURE PROCEDURES

TAKE-OFF MINIMUMS AND (OBSTACLE) DEPARTURE PROCEDURES

12152

TUNICA, MS

TUNICA MUNI (UTA)
AMDT 2 10322 (FAA)

NOTE: **Rwy 35**, tree 1211' from DER, 803' right of centerline, 70' AGL/258' MSL.

VICKSBURG, MS

VICKSBURG MUNI

TAKE-OFF MINIMUMS: **Rwy 1**, 600-2¼ or std. w/ min. climb of 354' per NM to 900. **Rwy 19**, 300-2 or std. w/ a min. climb of 224' per NM to 500, or alternatively, w/ std. takeoff minimums and a normal 200'/NM climb gradient, takeoff must occur no later than 2000' prior to departure end of runway.

NOTE: **Rwy 1**, trees beginning 1032' from departure end of runway, 316' left of centerline, up to 100' AGL/199' MSL. Stack 2.21 NM from departure end of runway, 2838' left of centerline, 594' AGL/699' MSL. Trees beginning 6387' from departure end of runway, 2174' right of centerline, up to 100' AGL/319' MSL.

Rwy 19, tower 1.6 NM from departure end of runway, 2749' right of centerline, 108' AGL/366' MSL.

VIVIAN, LA

VIVIAN (3F4)

AMDT 2 09099 (FAA)

TAKE-OFF MINIMUMS: **Rwy 9**, 200-1¼ or std. w/ min. climb of 303' per NM to 600. **Rwy 27**, 300-2 or std. w/ min. climb of 203' per NM to 600, or alternatively, with standard takeoff minimums and a normal 200' per NM climb gradient, takeoff must occur no later than 1200' prior to DER.

DEPARTURE PROCEDURE: **Rwy 9**, climb heading 088° to 1900 before turning left. **Rwy 27**, climb heading 268° to 1900 before turning right.

NOTE: **Rwy 9**, tower 2476' from DER, 803' left of centerline, 100' AGL/360' MSL. Tank 1 NM from DER, 375' left of centerline, 162' AGL/432' MSL. Vehicle and road, crossing southwest to northeast beginning 1271' from DER, 645' right of centerline, 15' AGL/294' MSL.

Rwy 27, vehicle and road 204' from DER, 495' right of centerline, 15' AGL/274' MSL.

WEST POINT, MS

MCCHAREN FIELD

TAKE-OFF MINIMUMS: **Rwy 36**, 400-1 ¾ or std. with a min. climb of 360' per NM to 800.

NOTE: **Rwy 18**, numerous trees beginning 1' from departure end of runway, 250' left of centerline, up to 100' AGL/309' MSL. Terrain beginning 146' from departure end of runway, 22' left of centerline, up to 207' MSL. Fence 200' from departure end of runway, on centerline, up to 4' AGL/213' MSL. Terrain 151' from departure end of runway, 232' right of centerline, 207' MSL. Numerous trees beginning 913' from departure end of runway, 744' right of centerline, up to 100' AGL/279' MSL. Vehicle on road 268' from departure end of runway, on centerline, 10' AGL/219' MSL. **Rwy 36**, railroad track beginning 50' from departure end of runway, on centerline, 23' AGL/232' MSL. Terrain 243' from departure end of runway, 262' left of centerline, 214' MSL. Numerous trees beginning 1287' from departure end of runway, 299' left of centerline, up to 100' AGL/349' MSL. Tree 2016' from departure end of runway, 138' right of centerline, 100' AGL/319' MSL. Tower 1.4 NM from departure end of runway, 1398' right of centerline, 348' AGL/587' MSL. Tower 1.5 NM from departure end of runway, 1365' right of centerline, 305' AGL/547' MSL.

WINNFIELD, LA

DAVID G. JOYCE (0R5)

ORIG 09351 (FAA)

NOTE: **Rwy 9**, trees beginning 202' from DER, 330' right of centerline, 100' AGL/219' MSL, trees beginning 187' from DER, 256' left of centerline, 100' AGL/219' MSL. **Rwy 27**, trees beginning 192' from DER, 426' right of centerline, 100' AGL/259' MSL, trees beginning 3440' from DER, 1392' left of centerline, 100' AGL/289' MSL.

WINONA, MS

WINONA-MONTGOMERY COUNTY (ONA)

ORIG 08045 (FAA)

TAKE-OFF MINIMUMS: **Rwy 21**, 400-2¼ or std. w/ min. climb of 215' per NM to 900. Alternatively, with standard takeoff minimums and a normal 200'/NM climb gradient, takeoff must occur no later than 1900' prior to departure end of runway.

DEPARTURE PROCEDURE: **Rwy 3**, Climb heading 030° to 1000 before turning west.

NOTE: **Rwy 21**, Tower 2.1 NM from departure end of runway, 2789' right of centerline, 350' AGL/703' MSL.

YAZOO CITY, MS

YAZOO COUNTY (871)

ORIG 11349 (FAA)

NOTE: **Rwy 17**, trees beginning 684' from DER, 131' left of centerline, up to 100' AGL/202' MSL. Trees beginning 1016' from DER, 103' right of centerline, up to 100' AGL/200' MSL. **Rwy 35**, trees beginning 2616' from DER, 837' left of centerline, up to 100' AGL/200' MSL. Trees beginning 303' from DER, 1228' right of centerline, up to 100' AGL/200' MSL.

31 MAY 2012 to 28 JUN 2012

31 MAY 2012 to 28 JUN 2012

12152

TAKE-OFF MINIMUMS AND (OBSTACLE) DEPARTURE PROCEDURES