

WAAS CH 42525 W24A	APP CRS 241°	Rwy Idg TDZE Apt Elev	3471 790 790
--	------------------------	-----------------------------	---

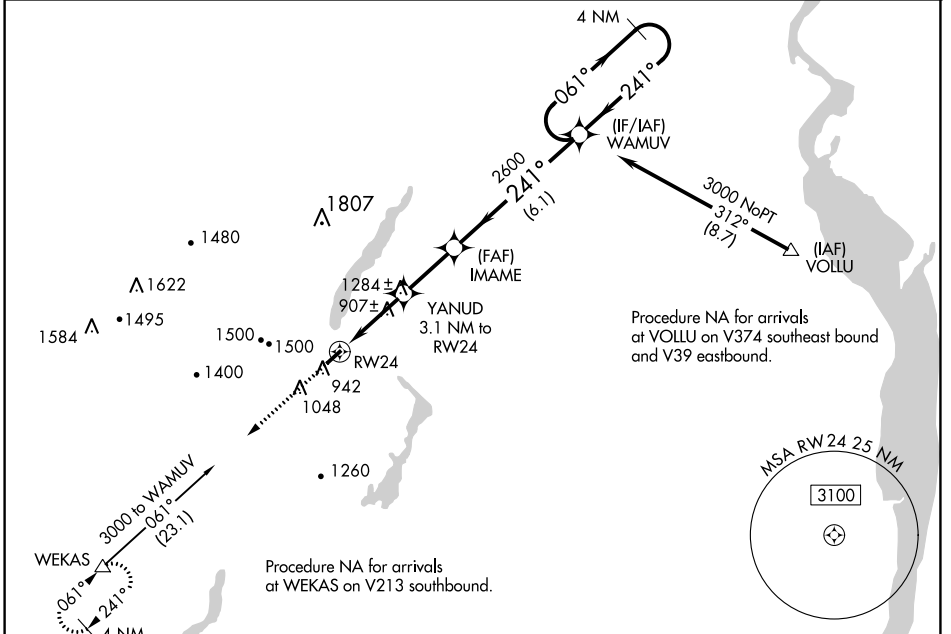
RNAV (GPS) RWY 24

WEST MILFORD / GREENWOOD LAKE (4N1)

NA DME/DME RNP-0.3 NA. Obtain local altimeter setting on CTAF; when not received, use Sussex altimeter setting. When VGSI inoperative, Circling Rwy 24 NA at night. When VGSI inoperative, Straight-in/Circling Rwy 6 procedure NA at night. Visibility reduction by helicopters NA.

MISSED APPROACH: Climb to 3000 direct WEKAS and hold.

NEW YORK APP CON 127.6 379.9	CTAF 122.9
--	----------------------



NE-2, 08 JAN 2015 to 05 FEB 2015

NE-2, 08 JAN 2015 to 05 FEB 2015

ELEV 790	TDZE 790	3000	WEKAS	VGSI and descent angles not coincident (VGSI Angle 3.50/TCH 44).	4 NM Holding Pattern
CATEGORY	A	B	C	D	
LP MDA	1160-1	370 (400-1)			NA
LNAV MDA	1540-1	1540-1¼			NA
CIRCLING	1600-1	1600-1¼			NA
	810 (900-1)	810 (900-1¼)			
SUSSEX ALTIMETER SETTING MINIMUMS					
LP MDA	1240-1	450 (500-1)			NA
LNAV MDA	1620-1	1620-1¼			NA
	830 (900-1)	830 (900-1¼)			
CIRCLING	1700-1¼	1700-1¼			NA
	910 (1000-1¼)	910 (1000-1¼)			

WAAS CH 93821 W06A	APP CRS 061°	Rwy Idg TDZE Apt Elev	3471 790 790
--	------------------------	-----------------------------	---

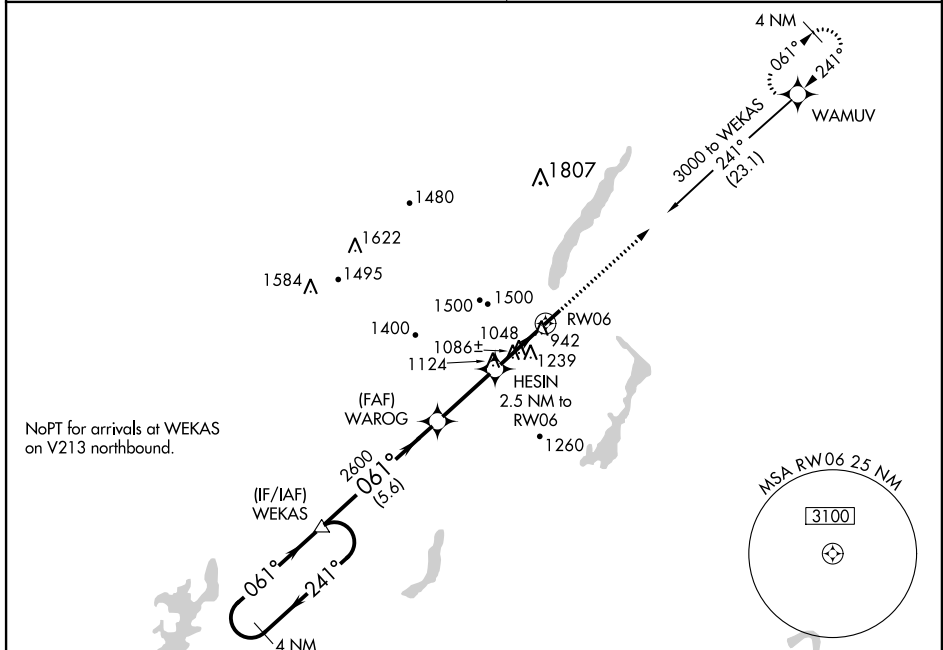
RNAV (GPS) RWY 6

WEST MILFORD / GREENWOOD LAKE (4N1)

⚠ NA When VGSI inoperative, Circling Rwy 24 NA at night. When VGSI inoperative, Straight-in/ Circling Rwy 6 procedure NA at night. DME/DME RNP-0.3 NA. Obtain local altimeter setting on CTAF; when not received, use Sussex altimeter setting. Visibility reduction by helicopters NA.

MISSED APPROACH: Climb to 3000 direct WAMUV and hold.

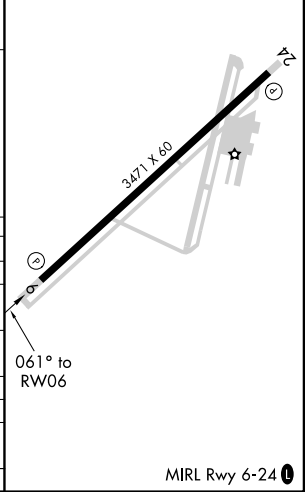
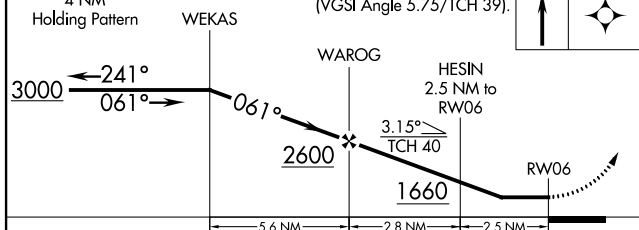
NEW YORK APP CON 127.6 379.9	CTAF 122.9 0
--	------------------------



NE-2, 08 JAN 2015 to 05 FEB 2015

NE-2, 08 JAN 2015 to 05 FEB 2015

4 NM Holding Pattern	VGSI and descent angles not coincident (VGSI Angle 5.75/TCH 39).	3000 WAMUV	ELEV 790	TDZE 790
----------------------	--	------------	----------	----------



CATEGORY	A	B	C	D
LP MDA	1340-1	550 (600-1)		NA
RNAV MDA	1540-1 750 (800-1)	1540-1¼ 750 (800-1¼)		NA
CIRCLING	1600-1 810 (900-1)	1600-1¼ 810 (900-1¼)		NA
SUSSEX ALTIMETER SETTING MINIMUMS				
LP MDA	1420-1	630 (700-1)		NA
RNAV MDA	1580-1 790 (800-1)	1580-1¼ 790 (800-1¼)		NA
CIRCLING	1700-1¼	910 (1000-1¼)		NA