

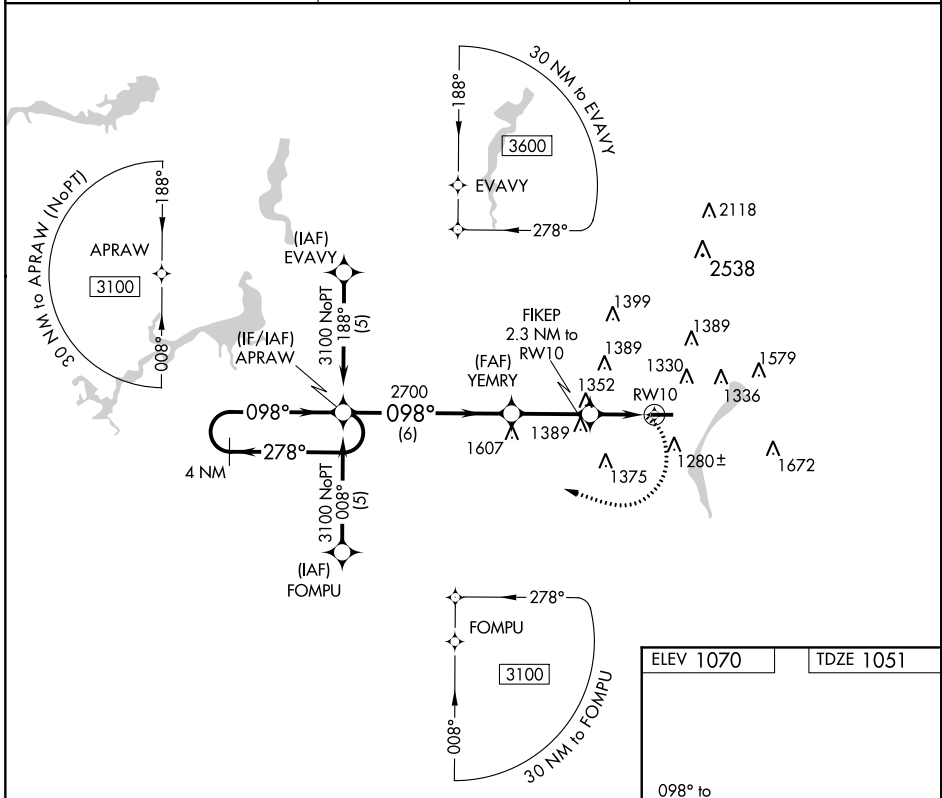
APP CRS 098°	Rwy Idg 3664
	TDZE 1051
	Apt Elev 1070

RNAV (GPS) RWY 10

YOUNGSTOWN ELSER METRO (4G4)

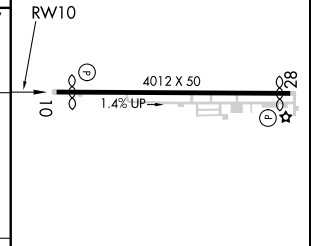
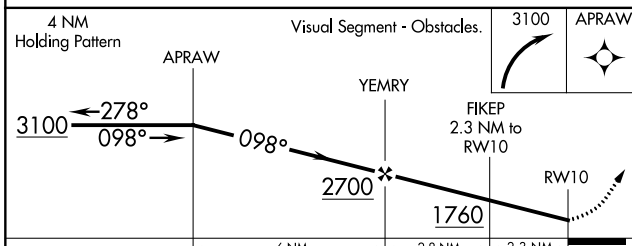
<p>NA</p> <p>DME/DME RNP-0.3 NA. Visibility reduction by helicopters NA. Obtain local altimeter setting on CTAF; when not received, use New Castle altimeter setting and increase all MDA 40 feet.</p>	<p>MISSED APPROACH: Climbing right turn to 3100 direct APRAW and hold.</p>
---	--

<p>AKRON-CANTON APP CON *</p> <p>125.5 371.875</p>	<p>CLNC DEL</p> <p>119.25</p>	<p>UNICOM</p> <p>123.05 (CTAF)</p>
---	--------------------------------------	---



EC-2, 14 SEP 2017 to 12 OCT 2017

EC-2, 14 SEP 2017 to 12 OCT 2017



CATEGORY	A	B	C	D
LNNAV MDA	1660-1	609 (600-1)		NA
CIRCLING	1660-1	590 (600-1)		NA

MIRL Rwy 10-28
REL Rwy 10 and 28

APP CRS 279°	Rwy Idg 3753
	TDZE 1063
	Apt Elev 1070

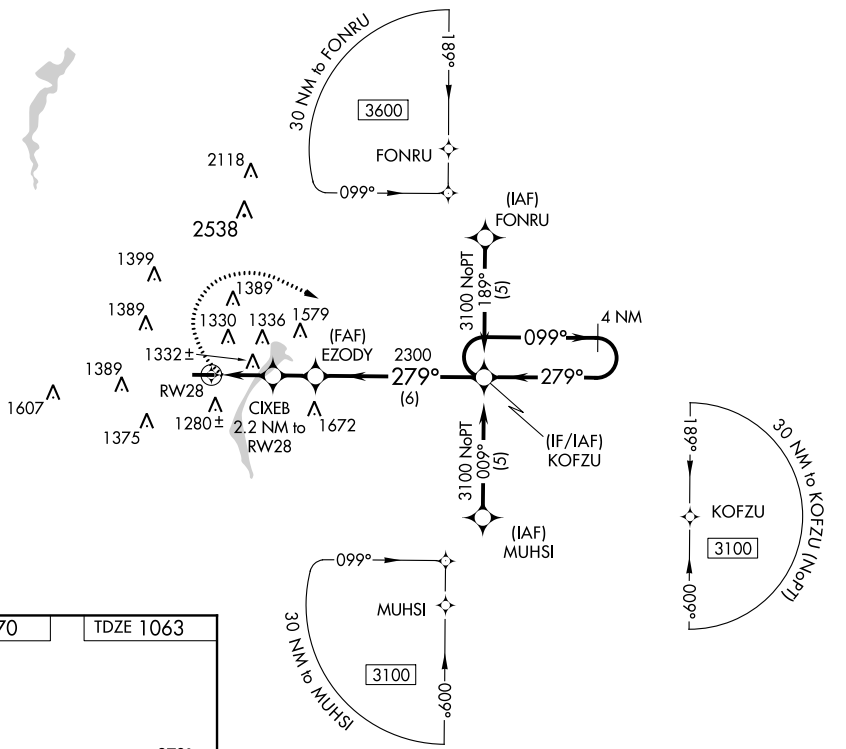
RNAV (GPS) RWY 28

YOUNGSTOWN ELSER METRO (4G4)

NA DME/DME RNP-0.3 NA. Visibility reduction by helicopters NA. Obtain local altimeter setting on CTA; when not received, use New Castle altimeter setting and increase all MDA 40 feet.

MISSED APPROACH: Climbing right turn to 3100 direct KOFZU and hold.

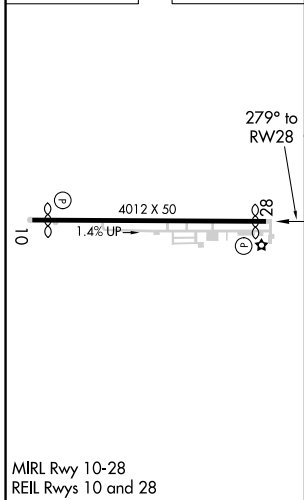
AKRON-CANTON APP CON * 125.5 371.875	CLNC DEL 119.25	UNICOM 123.05 (CTAF)
--	---------------------------	--------------------------------



EC-2, 14 SEP 2017 to 12 OCT 2017

EC-2, 14 SEP 2017 to 12 OCT 2017

ELEV 1070	TDZE 1063
-----------	-----------



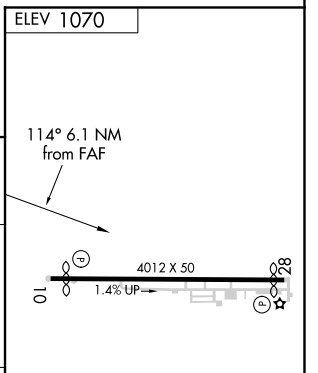
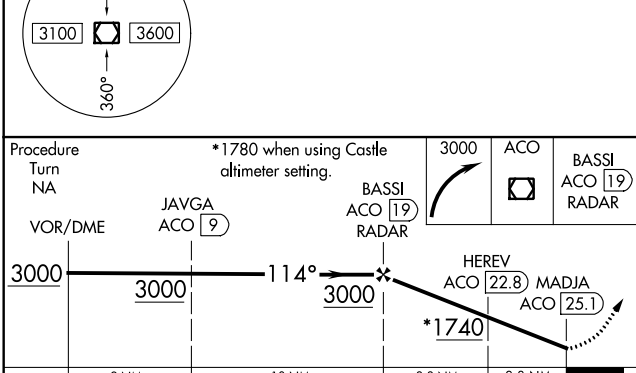
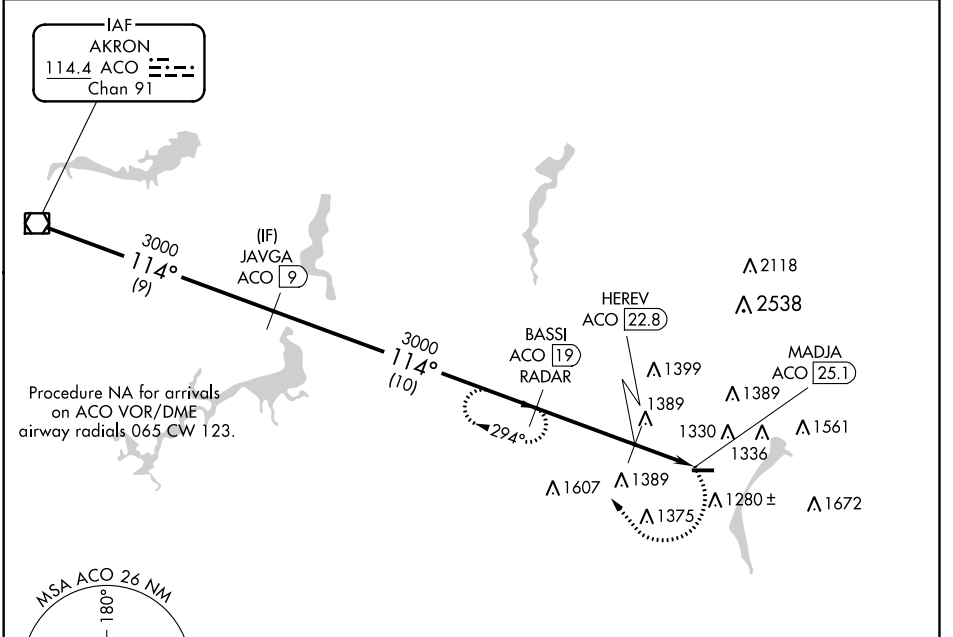
	3100	KOFZU	Visual Segment - Obstacles.	4 NM Holding Pattern
			EZODY	KOFZU
			279°	099°
			1800	2300
			2.2 NM	1.5 NM
			6 NM	
CATEGORY	A	B	C	D
LNAV MDA	1600-1	537 (600-1)		NA
CIRCLING	1660-1	590 (600-1)		NA

VOR/DME ACO 114.4 Chan 91	APP CRS 114°	Rwy ldg TDZE N/A Apt Elev 1070
---	------------------------	---

VOR-C
YOUNGSTOWN ELSER METRO (4G4)

NA	DME or RADAR Required. Obtain local altimeter setting on CTAF; when not received, use New Castle altimeter setting and increase all MDA 40 feet.	MISSED APPROACH: Climbing right turn to 3000 via ACO VOR/DME R-114 to BASSI/ACO 19 DME/RADAR and hold.
-----------	--	--

AKRON-CANTON APP CON ★ 125.5 371.875	CLNC DEL 119.25	UNICOM 123.05 (CTAF)
--	---------------------------	--------------------------------



CATEGORY	A	B	C	D	MIRL Rwy 10-28 REIL Rwys 10 and 28												
CIRCLING	1740-1 670 (700-1)	1740-1¼ 670 (700-1¼)	NA														
HEREV FIX MINIMUMS					FAF to MAP 6.1 NM												
CIRCLING	1660-1	590 (600-1)	NA		<table border="1"> <tr> <td>Knots</td> <td>60</td> <td>90</td> <td>120</td> <td>150</td> <td>180</td> </tr> <tr> <td>Min:Sec</td> <td>6:06</td> <td>4:04</td> <td>3:03</td> <td>2:26</td> <td>2:02</td> </tr> </table>	Knots	60	90	120	150	180	Min:Sec	6:06	4:04	3:03	2:26	2:02
Knots	60	90	120	150	180												
Min:Sec	6:06	4:04	3:03	2:26	2:02												

EC-2, 14 SEP 2017 to 12 OCT 2017

EC-2, 14 SEP 2017 to 12 OCT 2017