

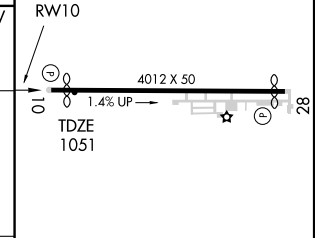
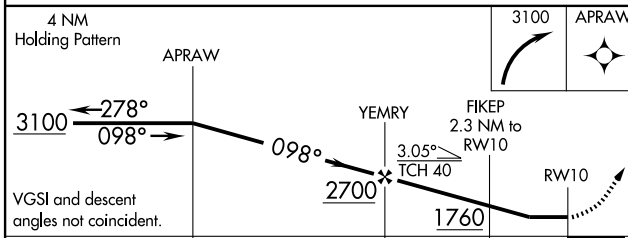
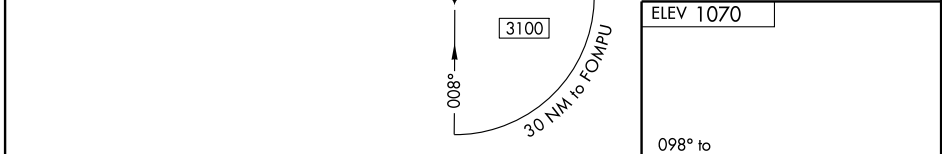
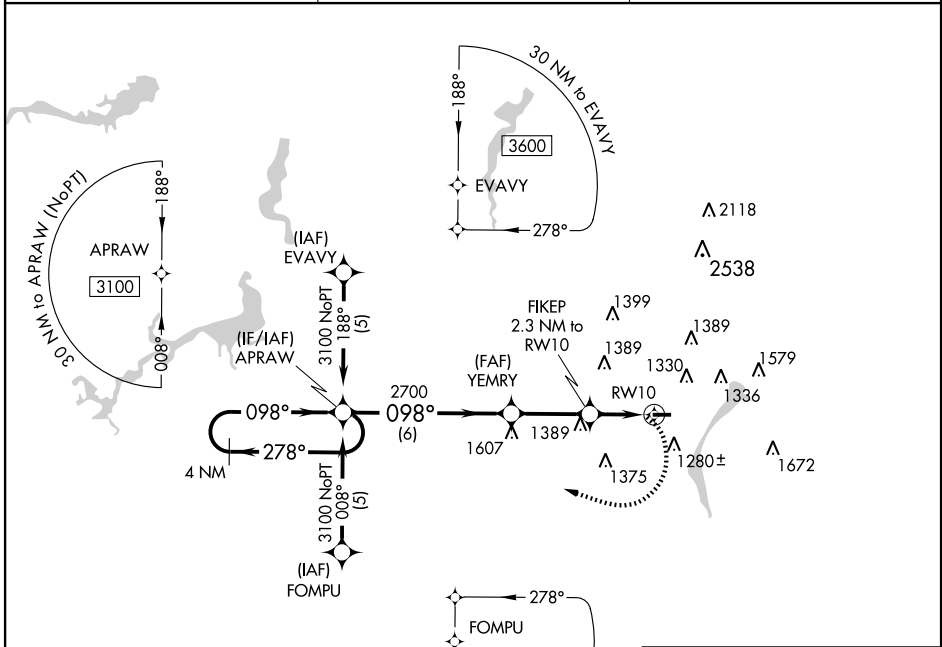
APP CRS 098°	Rwy Idg 3664
	TDZE 1051
	Apt Elev 1070

RNAV (GPS) RWY 10

YOUNGSTOWN ELSER METRO (4G4)

<p>NA</p> <p>DME/DME RNP-0.3 NA. Visibility reduction by helicopters NA. Obtain local altimeter setting on CTAF; when not received, use New Castle altimeter setting and increase all MDA 40 feet.</p>	<p>MISSED APPROACH: Climbing right turn to 3100 direct APRAW and hold.</p>
---	--

<p>AKRON-CANTON APP CON *</p> <p>125.5 371.875</p>	<p>CLNC DEL</p> <p>119.25</p>	<p>UNICOM</p> <p>123.05 (CTAF)</p>
---	--------------------------------------	---



CATEGORY	A	B	C	D
LNNAV MDA	1600-1	549 (600-1)	NA	
CIRCLING	1640-1	570 (600-1)	NA	

MRL Rwy 10-28
REL Rwy 10 and 28

EC-2, 31 MAY 2012 to 28 JUN 2012

EC-2, 31 MAY 2012 to 28 JUN 2012

APP CRS 279°	Rwy Idg 3753
	TDZE 1063
	Apt Elev 1070

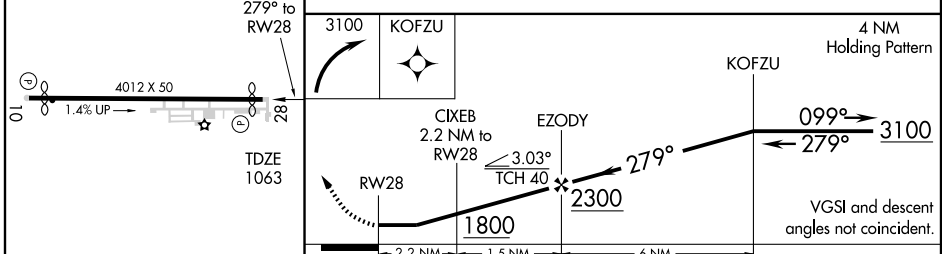
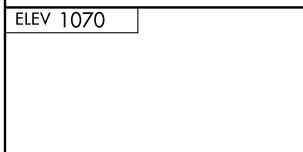
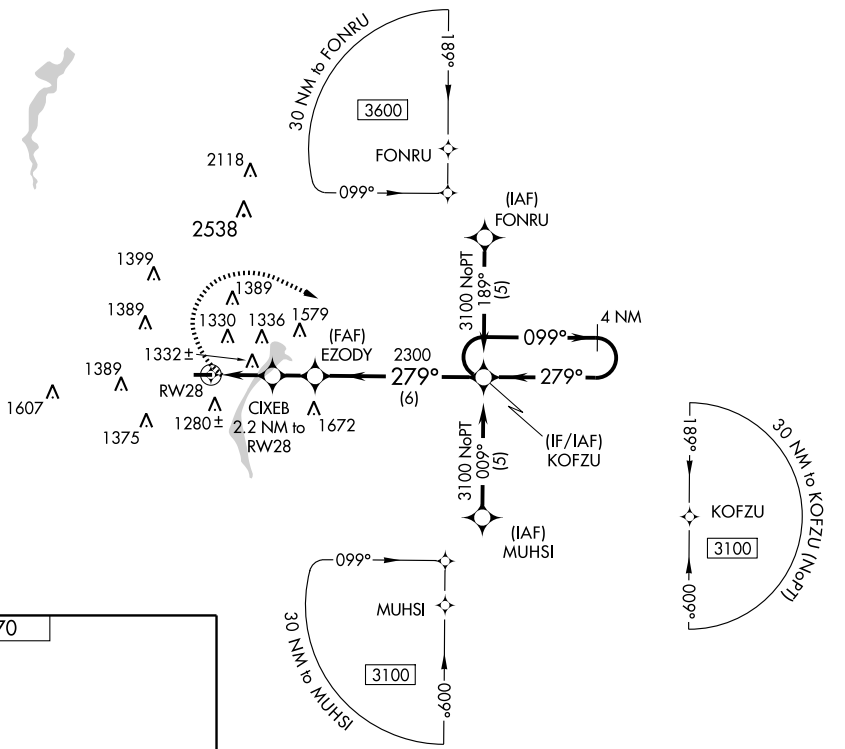
RNAV (GPS) RWY 28

YOUNGSTOWN ELSER METRO (4G4)

NA DME/DME RNP-0.3 NA. Visibility reduction by helicopters NA. Obtain local altimeter setting on CTAF; when not received, use New Castle altimeter setting and increase all MDA 40 feet.

MISSED APPROACH: Climbing right turn to 3100 direct KOFZU and hold.

AKRON-CANTON APP CON ★ 125.5 371.875	CLNC DEL 119.25	UNICOM 123.05 (CTAF)
--	---------------------------	--------------------------------



CATEGORY	A	B	C	D
LNAV MDA	1600-1	537 (600-1)		NA
CIRCLING	1640-1	570 (600-1)		NA

MIRL Rwy 10-28
REIL Rwy 10 and 28
YOUNGSTOWN, OHIO
Orig 03JUN10

40°58'N-80°41'W

YOUNGSTOWN ELSER METRO (4G4)

RNAV (GPS) RWY 28

EC-2, 31 MAY 2012 to 28 JUN 2012

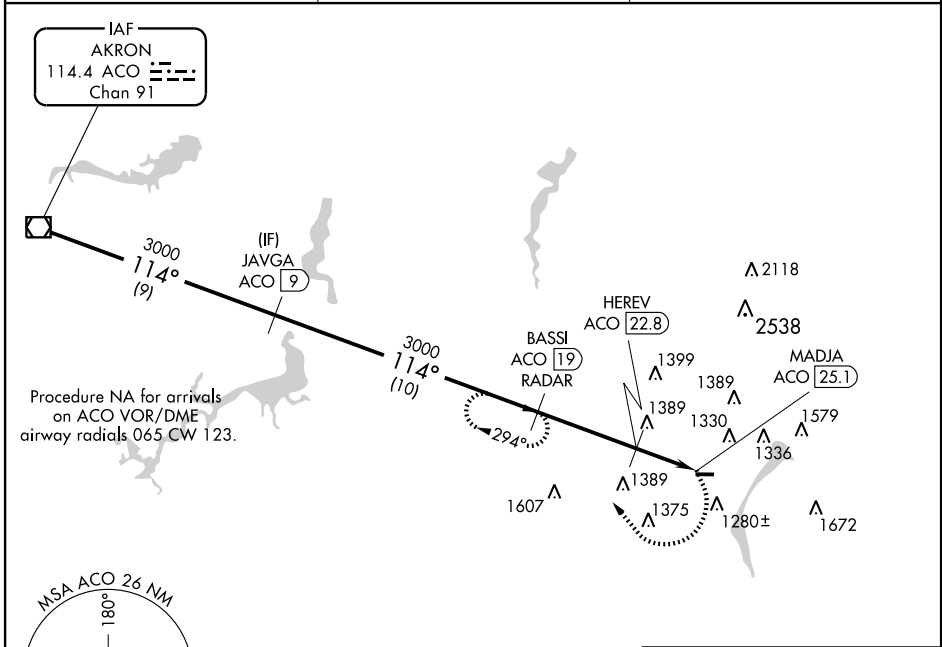
EC-2, 31 MAY 2012 to 28 JUN 2012

VOR/DME ACO 114.4 Chan 91	APP CRS 114°	Rwy Idg TDZE Apt Elev N/A N/A 1070
---	------------------------	--

VOR-C
YOUNGSTOWN ELSER METRO (4G4)

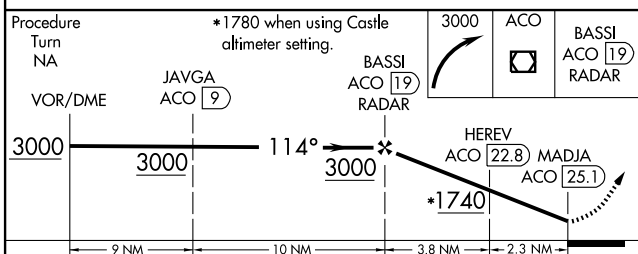
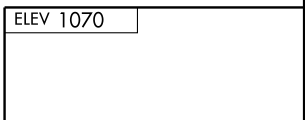
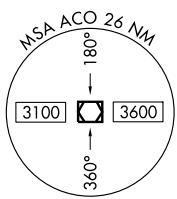
NA	DME or RADAR Required. Obtain local altimeter setting on CTAf; when not received, use New Castle altimeter setting and increase all MDA 40 feet.	MISSED APPROACH: Climbing right turn to 3000 via ACO VOR/DME R-114 to BASSI/ACO 19 DME/RADAR and hold.
-----------	--	--

AKRON-CANTON APP CON * 125.5 371.875	CLNC DEL 119.25	UNICOM 123.05 (CTAF)
--	---------------------------	--------------------------------



EC-2, 31 MAY 2012 to 28 JUN 2012

EC-2, 31 MAY 2012 to 28 JUN 2012



CATEGORY	A	B	C	D
CIRCLING	1740-1 670 (700-1)	1740-1¼ 670 (700-1¼)	NA	
HEREV FIX MINIMUMS				
CIRCLING	1640-1 570 (600-1)	1640-1¼ 570 (600-1¼)	NA	

ELEV 1070					
114° 6.1 NM from FAF					
4012 X 50					
1.4% UP					
MIRL Rwy 10-28 REIL Rwy 10 and 28					
FAF to MAP 6.1 NM					
Knots	60	90	120	150	180
Min:Sec	6:06	4:04	3:03	2:26	2:02

TAKE-OFF MINIMUMS AND (OBSTACLE) DEPARTURE PROCEDURES

12152

INSTRUMENT APPROACH PROCEDURE CHARTS

IFR TAKE-OFF MINIMUMS AND (OBSTACLE) DEPARTURE PROCEDURES

ALL USERS: Airports that have Departure Procedures (DPs) designed specifically to assist pilots in avoiding obstacles during the climb to the minimum enroute altitude, and/or airports that have civil IFR take-off minimums other than standard, are listed below. Take-off Minimums and Departure Procedures apply to all runways unless otherwise specified. Altitudes, unless otherwise indicated, are minimum altitudes in MSL.

DPs specifically designed for obstacle avoidance are referred to as Obstacle Departure Procedures (ODPs) and are described below in text, or published separately as a graphic procedure. If the (Obstacle) DP is published as a graphic procedure, its name will be listed below, and it can be found in either this volume (civil), or the applicable military volume, as appropriate. Users will recognize graphic obstacle DPs by the term "(OBSTACLE)" included in the procedure title; e.g., TETON TWO (OBSTACLE). If not specifically assigned a departure procedure (i.e., ODP, SID, or radar vector) as part of an IFR clearance, an ODP may be required to be flown for obstacle clearance, even though not specifically stated in the IFR clearance. When doing so in this manner, ATC should be informed when the ODP being used contains a specified route to be flown, restrictions before turning, and/or altitude restrictions.

Graphic DPs designed by ATC to standardize traffic flows, ensure aircraft separation and enhance capacity are referred to as "Standard Instrument Departures (SIDs)". SIDs also provide obstacle clearance and are published under the appropriate airport section. ATC clearance must be received prior to flying a SID.

CIVIL USERS NOTE: Title 14 Code of Federal Regulations Part 91 prescribes standard take-off rules and establishes take-off minimums for certain operators as follows: (1) Aircraft having two engines or less - one statute mile. (2) Aircraft having more than two engines - one-half statute mile. These standard minima apply in the absence of any different minima listed below.

MILITARY USERS NOTE: Civil (nonstandard) take-off minima are published below. For military take-off minima, refer to appropriate service directives.

NAME	TAKE-OFF MINIMUMS	NAME	TAKE-OFF MINIMUMS
AKRON, OH		ANDERSON, IN	
AKRON-CANTON RGNL (CAK)		ANDERSON MUNI-DARLINGTON FIELD (AID)	
AMDT 6 10322 (FAA)		AMDT 1 11069 (FAA)	
Note: Rwy 1 , multiple trees beginning 2756' from DER, 447' left of centerline, up to 116' AGL/1316' MSL. Powerlines beginning 3215' from DER, left and right of centerline, up to 80' AGL/1289' MSL. Rwy 5 , multiple trees beginning 840' from DER, 550' right of centerline, up to 116' AGL/1336' MSL. Tree 577' from DER, 561' left of centerline, 46' AGL/1256' MSL. Rwy 19 , trees beginning 1998' from DER, 817' left of centerline, up to 100' AGL/1290' MSL.		TAKE-OFF MINIMUMS: Rwy 30 , 300-1¼ or std. w/min. climb of 220' per NM to 1200, or alternatively, with standard takeoff minimums and a normal 200' per NM climb gradient, takeoff must occur no later than 1500' prior to DER.	
AKRON FULTON INTL (AKR)		NOTE: Rwy 12 , pole and trees beginning 509' from DER, 519' left of centerline, up to 100' AGL/1005' MSL. Trees beginning 1947' from DER, 446' right of centerline, up to 100' AGL/1010' MSL. Railroad 944' from DER, left and right of centerline, up to 23' AGL/945' MSL. Rwy 18 , trees beginning 437' from DER, 169' left of centerline, up to 100' AGL/951' MSL. Trees beginning 440' from DER, 159' right of centerline, up to 100' AGL/1015' MSL. Vehicles on road beginning 373' from DER, left and right of centerline, up to 15' AGL/922' MSL. Terrain 417' from DER, 299' left of centerline, 0' AGL/918' MSL. Rwy 30 , tower and trees beginning 1516' from DER, 519' left of centerline, up to 161' AGL/1057' MSL. Trees beginning 389' from DER, 344' right of centerline, up to 100' AGL/1009' MSL. Vehicles on road beginning 152' from DER, left and right of centerline, up to 15' AGL/884' MSL. Rwy 36 , trees beginning 850' from DER, 133' left of centerline, up to 100' AGL/999' MSL. Building and trees beginning 277' from DER, 361' right of centerline, up to 100' AGL/1009' MSL. Vehicles on road beginning 165' from DER, left and right of centerline, up to 15' AGL/925' MSL.	
AMDT 1A 10098 (FAA)			
TAKE-OFF MINIMUMS: Rwys 1, 7 , 300-1. Rwy 19 , 300-1 or std. w/min. climb of 394' per NM to 1300. Rwy 25 , 300-1¼ or std. w/min. climb of 265' per NM to 1400.			
DEPARTURE PROCEDURE: Rwy 1 , climb runway heading to 2100 before turning West. Rwy 25 , climb runway heading to 2100 before turning North.			
NOTE: Rwy 7 , numerous trees, poles, roads, and terrain points beginning 45' from DER, both sides of centerline, up to 120' AGL/1189' MSL. Rwy 19 , tree 3244' from DER, 631' right of centerline, 100' AGL/1203' MSL. Rwy 25 , tower 1.4 NM from DER, 216' left of centerline, 309' AGL/1342' MSL.			

12152

TAKE-OFF MINIMUMS AND (OBSTACLE) DEPARTURE PROCEDURES

EC-2

TAKE-OFF MINIMUMS AND (OBSTACLE) DEPARTURE PROCEDURES

12152

ASHLAND, OH

ASHLAND COUNTY (3G4)
AMDT 3 10126 (FAA)

NOTE: **Rwy 1**, trees beginning 61' from DER, 194' right of centerline, up to 50' AGL/1249' MSL. **Rwy 19**, trees beginning 5' from DER, 167' left of centerline, up to 50' AGL/1259' MSL.

ASHTABULA, OH

ASHTABULA COUNTY (HZY)
ORIG-A 11349 (FAA)

NOTE: **Rwy 9**, trees beginning 779' from DER, 34' left of centerline, up to 91' AGL/1020' MSL. Trees beginning 27' from DER, 17' right of centerline, up to 91' AGL/1007' MSL. **Rwy 27**, trees beginning 1219' from DER, 183' left of centerline, up to 99' AGL/1008' MSL. Trees beginning 1465' from DER, 406' right of centerline, up to 83' AGL/992' MSL.

ATHENS (ALBANY), OH

OHIO UNIVERSITY SNYDER FIELD (UNI)
ORIG 10042 (FAA)

TAKE-OFF MINIMUMS: **Rwy 7**, 200-1 orstd. w/min. climb of 310' per NM to 1000. **Rwy 25**, 200-1 orstd. w/min. climb of 360' per NM to 1000.

NOTE: **Rwy 7**, trees beginning 4439' from DER, 1034' left of centerline, up to 100' AGL/933' MSL. Trees beginning 2869' from DER, 1171' right of centerline, up to 100' AGL/879' MSL. Vehicle abeam DER 451' left of centerline, 17' AGL/769' MSL. **Rwy 25**, trees beginning 3371' from DER, 425' left of centerline, up to 100' AGL/925' MSL. Trees beginning 1221' from DER, 624' right of centerline, up to 100' AGL/999' MSL.

AUBURN, IN

DE KALB COUNTY (GWB)
AMDT 1 06271 (FAA)

NOTE: **Rwy 9**, multiple trees beginning 428' from departure end of runway, 227' right of centerline, up to 100' AGL/979' MSL. **Rwy 27**, multiple trees beginning 83' from departure end of runway, 207' left of centerline, up to 100' AGL/939' MSL. Multiple tree beginning 1377' from departure end of runway, 316' right of centerline, up to 100' AGL/930' MSL.

BARNESVILLE, OH

BARNESVILLE-BRADFIELD (6G5)
ORIG 85297 (FAA)

TAKE-OFF MINIMUMS: **Rwys 9, 27**, 300-1.

BATAVIA, OH

CLERMONT COUNTY (I69)
ORIG 12124 (FAA)

NOTE: **Rwy 4**, terrain 8' from DER, 311' left of centerline, 813' MSL. Trees beginning 89' from DER, left and right of centerline, up to 100' AGL/899' MSL. Fence 195' from DER, 276' left of centerline, up to 19' AGL/819' MSL. Vehicles on roadway beginning 237' from DER, left and right of centerline, up to 15' AGL/824' MSL. Windscock 408' from DER, 225' right of centerline, up to 24' AGL/824' MSL. **Rwy 22**, buildings 55' from DER, left and right of centerline, up to 22' AGL/862' MSL. Trees beginning 81' from DER, left and right of centerline, up to 100' AGL/967' MSL. Fences beginning 102' from DER, left and right of centerline, up to 17' AGL/857' MSL. Poles beginning 195' from DER, left and right of centerline, up to 45' AGL/885' MSL. Vehicles on roadway beginning 216' from DER, left and right of centerline, up to 15' AGL/866' MSL. Sign 441' from DER, 231' left of centerline, up to 19' AGL/859' MSL.

BEACH CITY, OH

BEACH CITY (2D7)
ORIG 82245 (FAA)

TAKE-OFF MINIMUMS: **Rwys 10, 28**, 300-1.

BEDFORD, IN

VIRGIL I GRISSOM MUNI (BFR)
ORIG 11265 (FAA)

NOTE: **Rwy 6**, trees beginning 321' from DER, left and right of centerline, up to 112' AGL/830' MSL. **Rwy 13**, trees beginning 78' from DER, left and right of centerline, up to 110' AGL/849' MSL. **Rwy 24**, trees beginning 534' from DER, left and right of centerline, up to 100' AGL/800' MSL. **Rwy 31**, trees beginning 27' from DER, left and right of centerline, up to 107' AGL/806' MSL.

BELLEFONTAINE, OH

BELLEFONTAINE RGNL (EDJ)
ORIG 03079 (FAA)

DEPARTURE PROCEDURE: **Rwy 7**, climb to 2100 via heading 074° before proceeding on course.

BLOOMINGTON, IN

MONROE COUNTY (BMG)
AMDT 6 11237 (FAA)

TAKE-OFF MINIMUMS: **Rwy 24**, 300-1.

NOTE: **Rwy 6**, poles and building beginning 424' from DER, 332' left of centerline, up to 29' AGL/874' MSL. Trees beginning 491' from DER, left and right of centerline, up to 72' AGL/972' MSL. Fence 181' from DER, 115' right of centerline, 6' AGL/846' MSL. Vehicle on road beginning 89' from DER, left and right of centerline, 15' AGL/862' MSL. **Rwy 17**, vehicle on road 187' from DER, 18' right of centerline, 15' AGL/850' MSL. Tree 1263' from DER, 625' right of centerline, 32' AGL/871' MSL. Bush 855' from DER, 594' left of centerline, 25' AGL/862' MSL. **Rwy 24**, trees and poles beginning 158' from DER, left and right of centerline, up to 85' AGL/1021' MSL. Fence 394' from DER, 72' left of centerline, 9' AGL/849' MSL. Buildings beginning 1990' from DER, 321' right of centerline, up to 25' AGL/952' MSL. Vehicle on road beginning 45' from DER, left and right of centerline, 15' AGL/945' MSL. **Rwy 35**, trees beginning 2119' from DER, 120' left and right of centerline, up to 85' AGL/975' MSL.

31 MAY 2012 to 28 JUN 2012

31 MAY 2012 to 28 JUN 2012

12152

TAKE-OFF MINIMUMS AND (OBSTACLE) DEPARTURE PROCEDURES

TAKE-OFF MINIMUMS AND (OBSTACLE) DEPARTURE PROCEDURES

12152

BLUFFTON, OH

BLUFFTON (5G7)
AMDT 1 09183 (FAA)

NOTE: **Rwy 5**, trees beginning 975' from DER, 572' left of centerline, up to 100' AGL/949' MSL.

BOWLING GREEN, OH

WOOD COUNTY (1G0)
AMDT 3 07074 (FAA)

TAKE-OFF MINIMUMS: **Rwy 18**, 300-1.
NOTE: **Rwy 18**, building/tower 3581' from departure end of runway, 254' right of centerline, 141' AGL/841' MSL.

BRAZIL, IN

BRAZIL CLAY COUNTY (0I2)

TAKE-OFF MINIMUMS: **Rwys 9, 27**, 300-1.

BRYAN, OH

WILLIAMS COUNTY (0G6)
ORIG 10154 (FAA)

NOTE: **Rwy 7**, vehicles on road beginning 49' from DER, from left to right of centerline, up to 15' AGL/734' MSL. Tree 160' from DER, 323' left of centerline 30' AGL/759' MSL. Trees beginning 324' from DER, 403' right of centerline, up to 101' AGL/829' MSL. **Rwy 25**, vehicles on road beginning 203' from DER, from right to left of centerline, up to 15' AGL/744' MSL. Pole 285' from DER, 329' right of centerline, 37' AGL/767' MSL. Trees beginning 2787' from DER, 769' right of centerline, up to 100' AGL/829' MSL.

BUCYRUS, OH

PORT BUCYRUS-CRAWFORD COUNTY (17G)
AMDT 2 10322 (FAA)

TAKE-OFF MINIMUMS: **Rwy 4**, 300-1½ or std. w/ min. climb of 297' per NM to 1300, or alternatively, with std. takeoff minimums and a normal 200' per NM climb gradient, takeoff must occur no later than 1400' prior to DER.

NOTE: **Rwy 4**, terrain 4' from DER, 484' right of centerline, up to 1008' MSL. Aircraft on ramp beginning 47' from DER, 289' right of centerline, up to 15' AGL/1019' MSL. Terrain beginning 93' from DER, 245' left of centerline, up to 1008' MSL. Vehicle on road beginning 107' from DER, 487' right of centerline, 15' AGL/1019' MSL. Trees 229' from DER, 261' left of centerline, up to 100' AGL/1099' MSL. Trees 2777' from DER, 1207' left of centerline, up to 100' AGL/1109' MSL. Trees 2933' from DER, 330' right of centerline, up to 100' AGL/1124' MSL. Tower 1.1 NM from DER, 1798' left of centerline, 165' AGL/1175' MSL. **Rwy 22**, buildings beginning 4' from DER, 352' right of centerline, up to 40' AGL/1044' MSL. Vehicle on road beginning 243' from DER, 552' left of centerline, 15' AGL/1019' MSL. Trees 426' from DER, 382' left of centerline, up to 100' AGL/1104' MSL. Trees 733' from DER, 466' right of centerline, up to 100' AGL/1099' MSL.

CADIZ, OH

HARRISON COUNTY (8G6)
AMDT 3 11125 (FAA)

TAKE-OFF MINIMUMS: **Rwys 13, 31**, 300-1.
NOTE: **Rwy 13**, trees beginning 503' from DER, 213' left and right of centerline, up to 100' AGL/1219' MSL. Powerline 927' from DER, 718' left of centerline, 30' AGL/1196' MSL. **Rwy 31**, rising terrain beginning 966' from DER, 224' left and right of centerline, up to 1319' MSL.

CALDWELL, OH

NOBLE COUNTY (1I0)
AMDT 1 97146 (FAA)

TAKE-OFF MINIMUMS: **Rwy 5, 23**, 400-1.
DEPARTURE PROCEDURE: **Rwy 23**, climb runway heading to 1500 before turning.

CAMBRIDGE, OH

CAMBRIDGE MUNI (CDI)
AMDT 2 96144 (FAA)

TAKE-OFF MINIMUMS: **Rwys 4, 22**, 500-1 or std. with a min. climb of 350' per NM to 1500.

CARROLLTON, OH

CARROLL COUNTY-TOLSON (TSO)
AMDT 4 99140 (FAA)

TAKE-OFF MINIMUMS: **Rwy 7, 25**, 300-1.
NOTE: **Rwy 7**, 100' AGL trees 1800' from departure end of runway, 400' left of centerline. **Rwy 25**, 100' AGL trees 200' from departure end of runway, 400' left of centerline.

CELINA, OH

LAKEFIELD (CQA)
AMDT 2 10042 (FAA)

NOTE: **Rwy 8**, trees beginning 782' from DER, 7' right of centerline, up to 100' AGL/969' MSL. Trees beginning 57' from DER, 130' left of centerline, up to 100' AGL/976' MSL. **Rwy 26**, vehicle 63' from DER, 469' right of centerline, 15' AGL/909' MSL. Poles beginning 127' from DER, 145' right of centerline, up to 51' AGL/941' MSL. Antenna 653' from DER, 498' right of centerline, 33' AGL/923' MSL. Trees beginning 1194' from DER, 319' right of centerline, up to 100' AGL/952' MSL.

CHILLICOTHE, OH

ROSS COUNTY (RZT)
AMDT 3A 11321 (FAA)

TAKE-OFF MINIMUMS: **Rwy 23**, 400-1 or std. with min. climb of 340' per NM to 1300.
DEPARTURE PROCEDURE: **Rwy 5**, climb runway heading to 1500 before turning right. **Rwy 23**, climb runway heading to 1500 before turning left.

31 MAY 2012 to 28 JUN 2012

31 MAY 2012 to 28 JUN 2012

12152

TAKE-OFF MINIMUMS AND (OBSTACLE) DEPARTURE PROCEDURES

EC-2

TAKE-OFF MINIMUMS AND (OBSTACLE) DEPARTURE PROCEDURES

12152

CINCINNATI, OH

CINCINNATI MUNI AIRPORT-LUNKEN FIELD
(LUK)

AMDT 14 10098 (FAA)

TAKE-OFF MINIMUMS: **Rwy 3L**, std. w/min. climb of 392' per NM to 1000 or 400-2 w/min. climb of 213' per NM to 1400 or 1700-2½ for climb in visual conditions.

Rwy 3R, std. w/min. climb of 355' per NM to 1000 or 400-2 w/min. climb of 231' per NM to 1400 or 1700-2½ for climb in visual conditions. **Rwy 7**, std. w/min. climb of 424' per NM to 1000 or 400-1¾ w/min. climb of 205' per NM to 1300 or 1700-2½ for climb in visual conditions.

Rwy 21L, std. w/min. climb of 413' per NM to 1100 or 600-2¾ w/min. climb of 228' per NM to 1300 or 1700-2½ for climb in visual conditions. **Rwy 21R**, std. w/min. climb of 466' per NM to 1100 or 600-3 w/min. climb of 223' per NM to 1300 or 1700-2½ for climb in visual conditions. **Rwy 25**, 600-2¾ w/min. climb of 218' per NM to 1300 or 1700-2½ for climb in visual conditions.

DEPARTURE PROCEDURE: **Rwy 3L**, climb heading 027° to 1200 before proceeding on course. For climb in visual conditions: cross Cincinnati Muni Airport-Lunken Field at or above 2000 MSL before proceeding on course. **Rwy 3R**, climb heading 025° to 1400 before proceeding on course. For climb in visual conditions: cross Cincinnati Muni Airport-Lunken Field at or above 2000 MSL before proceeding on course. **Rwy 7**, climb heading 066° to 1300 before proceeding on course. For climb in visual conditions: cross Cincinnati Muni Airport-Lunken Field at or above 2000 MSL before proceeding on course. **Rwy 21L**, climb heading 205° to 1400 before proceeding on course. For climb in visual conditions: cross Cincinnati Muni Airport-Lunken Field at or above 2000 MSL before proceeding on course.

Rwy 21R, climb heading 207° to 1500 before proceeding on course. For climb in visual conditions: cross Cincinnati Muni Airport-Lunken Field at or above 2000 MSL before proceeding on course. **Rwy 25**, climb heading 246° to 1900 before proceeding on course. For climb in visual conditions: cross Cincinnati Muni Airport-Lunken Field at or above 2000 MSL before proceeding on course.

CINCINATI, OH (CON'T)

CINCINNATI MUNI AIRPORT-LUNKEN FIELD
(CON'T)

NOTE: **Rwy 3L**, building and hangers beginning 305' from DER, 259' left of centerline, up to 41' AGL/521' MSL. Trees beginning 957' from DER, 144' right of centerline, up to 77' AGL/556' MSL. Trees 1.2 NM from DER, 2270' left of centerline, up to 97' AGL/866' MSL. Pole 1.6 NM from DER, 320' left of centerline, 68' AGL/797' MSL. **Rwy 3R**, trees beginning 1426' from DER, 196' left of centerline, up to 68' AGL/557' MSL. Trees beginning 840' from DER, 130' right of centerline, up to 83' AGL/572' MSL. Trees 1.3 NM from DER, 2393' left of centerline, up to 97' AGL/856' MSL. Pole 1.5 NM from DER, 2062' left of centerline, 68' AGL/797' MSL. **Rwy 7**, trees beginning 447' from DER, 68' left of centerline, up to 87' AGL/576' MSL. Trees beginning 664' from DER, 45' right of centerline, up to 88' AGL/575' MSL. Trees 4515' from DER, 1519' right of centerline, up to 81' AGL/720' MSL. Trees 1.3 NM from DER, 2088' right of centerline, up to 85' AGL/824' MSL. **Rwy 21R**, trees beginning 1444' from DER, 203' left of centerline, up to 66' AGL/555' MSL. Trees beginning 1073' from DER, 25' right of centerline, up to 79' AGL/568' MSL. Trees 1.1 NM from DER, 2262' right of centerline, up to 86' AGL/895' MSL. Tower 2.3 NM from DER, 527' left of centerline, 168' AGL/990' MSL. Trees 2.4 NM from DER, 1847' left of centerline, up to 71' AGL/890' MSL. **Rwy 21L**, trees beginning 122' from DER, 63' left of centerline, up to 118' AGL/597' MSL. Trees beginning 15' from DER, 248' right of centerline, up to 82' AGL/571' MSL. Trees 4581' from DER, 1503' left of centerline, up to 144' AGL/723' MSL. Tower 2 NM from DER, 2027' right of centerline, 168' AGL/990' MSL. Pole 2.2 NM from DER, 281' right of centerline, 78' AGL/841' MSL. **Rwy 25**, sign, pole, hangers, and trees beginning 177' from DER, 13' left of centerline, up to 86' AGL/575' MSL. Road, building, poles, and trees beginning 185' from DER, 5' right of centerline, up to 73' AGL/562' MSL. Tank 1.4 NM from DER, 1755' right of centerline, 210' AGL/1046' MSL. Tower 2.6 NM from DER, 2052' left of centerline, 158' AGL/885' MSL.

CINCINNATI-BLUE ASH (ISZ)

AMDT 1 11237 (FAA)

TAKE-OFF MINIMUMS: **Rwy 6**, 300-2¼ or std. w/min. climb of 220' per NM to 1300, or alternatively, with standard takeoff minimums and a normal 200' per NM climb gradient, takeoff must occur no later than 1900' prior to DER.

DEPARTURE PROCEDURE: Climb heading 230° to 2200 before turning right.

NOTE: **Rwy 6**, tower 1.8 NM from DER, 3192' left of centerline, 269' AGL/1142' MSL. Building 1402' from DER, 733' left of centerline, 93' AGL/921' MSL. Crane 1745' from DER, 6' left of centerline, 80' AGL/911' MSL. Street lights beginning 469' from DER, 562' left of centerline, up to 41' AGL/872' MSL. Trees beginning 534' from DER, left and right of centerline, up to 104' AGL/931' MSL. **Rwy 24**, power poles beginning 419' from DER, 368' left of centerline, 52' AGL/906' MSL. Rising terrain 181' from DER, 250' left of centerline, up to 861' MSL. Trees beginning 164' from DER, left and right of centerline, up to 86' AGL/900' MSL.

31 MAY 2012 to 28 JUN 2012

31 MAY 2012 to 28 JUN 2012

12152

TAKE-OFF MINIMUMS AND (OBSTACLE) DEPARTURE PROCEDURES

EC-2

TAKE-OFF MINIMUMS AND (OBSTACLE) DEPARTURE PROCEDURES

12152

CLEVELAND, OH

BURKE LAKEFRONT (BKL)

AMDT 5 10322 (FAA)

TAKE-OFF MINIMUMS: **Rwy 6L**, 400-2 or std. w/a min. climb of 384' per NM to 1000. **Rwy 6R**, 400-2¼ or std. w/a min. climb of 331' per NM to 1000. **Rwy 24L**, 300-1½ or std. w/a min. climb of 761' per NM to 900. **Rwy 24R**, 200-1 or std. w/a min. climb of 527' per NM to 900.

DEPARTURE PROCEDURE: **Rwys 6L, 6R**, climb heading 065° to 1500 before proceeding on course. **Rwys 24L/24R**, climbing right turn to intercept CXR VOR/DME R-272 to 1900 before proceeding on course.

NOTE: **Rwy 6L**, hangar light 1126' from DER, 780' right of centerline, 47' AGL/622' MSL. Tower 2946' from DER, 780' right of centerline, 80' AGL/662' MSL. Light on building 3282' from DER. 598' right of centerline, 123' AGL/704' MSL. Stacks beginning 3301' from DER, 683' right of centerline, 312' AGL/898' MSL. Tower 5589' from DER, 1759' right of centerline, 237' AGL/857' MSL. **Rwy 6R**, light on windsock 165' from DER, 241' left of centerline, 15' AGL/590' MSL. Pole 1368' from DER, 852' right of centerline, 42' AGL/627' MSL. Towers, antennas and stacks beginning 3968' from DER, 326' right of centerline, 312' AGL/898' MSL. Light on building 4283' from DER, 97' right of centerline, 123' AGL/704' MSL. **Rwy 24R**, bushes beginning 68' from DER, 129' right of centerline, up to 14' AGL/586' MSL. Monument 1256' from DER, 509' left of centerline, 55' AGL/630' MSL. Antenna 1320' from DER, 338' left of centerline, 57' AGL/632' MSL. Crane 2238' from DER, 296' left of centerline, 136' AGL/707' MSL. Antenna 2783' from DER, 1155' left of centerline, 186' AGL/764' MSL. **Rwy 24L**, antenna 226' from DER, 505' left of centerline, 37' AGL/608' MSL. Monument, 1257' from DER, 10' left of centerline, 55' AGL/630' MSL. Antenna 1320' from DER, 161' right of centerline, 57' AGL/632' MSL. Building 1685' from DER, 685' left of centerline, 164' AGL/742' MSL. Building 1751' from DER, 655' left of centerline, 165' AGL/739' MSL. Crane 2238' from DER, 202' right of centerline, 136' AGL/707' MSL. Antenna on stadium 2783' from DER, 656' left of centerline, 186' AGL/764' MSL. Building 2998' from DER, 1068' left of centerline, 143' AGL/724' MSL. Bridges beginning 6699' from DER, 2006' left of centerline, up to 208' AGL/792' MSL.

CLEVELAND-HOPKINS INTL (CLE)

AMDT 16 10322 (FAA)

DEPARTURE PROCEDURE: **Rwys 6L, 6R, 10**, climbing left turn to intercept DJB VOR/DME R-082 inbound to 2600 before proceeding on course.

NOTE: **Rwy 6R**, antenna 1056' from DER, 82' left of centerline, 45' AGL/820' MSL. **Rwy 10**, trees, pole and tower beginning 1159' from DER, 656' right of centerline, up to 137' AGL/922' MSL. Signs beginning 1236' from DER, 717' left of centerline, up to 86' AGL/857' MSL. **Rwy 24R**, trees beginning 3652' from DER, 856' left of centerline, up to 100' AGL/870' MSL. Tower 2564' from DER, 1027' right of centerline, 191' AGL/870' MSL. **Rwy 24L**, trees and poles beginning 1903' from DER, 5' left of centerline, up to 89' AGL/849' MSL. **Rwy 28**, trees, antenna and road beginning 3' from DER, 304' left of centerline, up to 94' AGL/820' MSL. Tree 712' from DER, 117' right of centerline, 135' AGL/811' MSL.

CLEVELAND, OH (CON'T)

CUYAHOGA COUNTY (CGF)

AMDT 1 10322 (FAA)

NOTE: **Rwy 6**, trees beginning 2127' from DER, 33' right of centerline, up to 109' AGL/982' MSL. Tree 2595' from DER, 739' left of centerline, 93' AGL/947' MSL. **Rwy 24**, terrain 35' from DER, 447' left of centerline, 874' MSL. Trees beginning 755' from DER, 46' right of centerline, up to 82' AGL/975' MSL. Building 1179' from DER, 676' left of centerline, 34' AGL/917' MSL. Trees beginning 1784' from DER, 35' left of centerline, up to 92' AGL/985' MSL.

COLUMBUS, IN

COLUMBUS MUNI (BAK)

ORIG 08269 (FAA)

NOTE: **Rwy 14**, tree 1589' from departure end of runway, 306' right of centerline, 40' AGL/696' MSL.

COLUMBUS, OH

BOLTON FIELD (TZR)

ORIG 09015 (FAA)

DEPARTURE PROCEDURE: **Rwy 4**, climb heading 037° to 1800 before turning east.

NOTE: **Rwy 4**, tree 1091' from departure end of runway, 770' left of centerline, 53' AGL/959' MSL. Tree 487' from departure end of runway, 356' right of centerline, 23' AGL/929' MSL. Tree 1317' from departure end of runway, 452' right of centerline, 42' AGL/948' MSL. Tree 1307' from departure end of runway, 50' left of centerline, 36' AGL/942' MSL. Tree 1927' from departure end of runway, 135' right of centerline, 49' AGL/955' MSL. **Rwy 22**, tree 1273' from departure end of runway, 720' right of centerline, 40' AGL/945' MSL. Tree 712' from departure end of runway, 662' right of centerline, 25' AGL/927' MSL. Tree 1411' from departure end of runway, 658' right of centerline 33' AGL/939' MSL.

PORT COLUMBUS INTL (CMH)

AMDT 6 07130 (FAA)

DEPARTURE PROCEDURE: **Rwys 28L, 28R**, climb heading 279° to 2700 before turning left.

NOTE: **Rwy 10L**, tree 1950' from departure end of runway, 908' left of centerline, 53' AGL/862' MSL. Tree 1883' from departure end of runway, 914' right of centerline, 57' AGL/866' MSL. **Rwy 10R**, trees 1870' from departure end of runway, 927' right of centerline, 86' AGL/877' MSL. **Rwy 28L**, multiple trees beginning 1398' from departure end of runway, 785' left of centerline, up to 51' AGL/870' MSL. Multiple trees beginning 2109' from departure end of runway, 1020' right of centerline, up to 75' AGL/884' MSL. **Rwy 28R**, multiple poles and trees beginning 1743' from departure end of runway, 625' right of centerline, up to 59' AGL/878' MSL.

31 MAY 2012 to 28 JUN 2012

31 MAY 2012 to 28 JUN 2012

12152

TAKE-OFF MINIMUMS AND (OBSTACLE) DEPARTURE PROCEDURES

EC-2

TAKE-OFF MINIMUMS AND (OBSTACLE) DEPARTURE PROCEDURES

12152

COLUMBUS, OH (CON'T)

OHIO STATE UNIVERSITY (OSU)
ORIG 11069 (FAA)

NOTE: **Rwy 5**, trees beginning 1461' from DER, 48' left of centerline, up to 76' AGL/955' MSL. Trees beginning 1422' from DER, 157' right of centerline, up to 86' AGL/965' MSL. **Rwy 9L**, trees beginning 1017' from DER, 122' left of centerline, up to 86' AGL/965' MSL. Trees beginning 2001' from DER, 1015' right of centerline, up to 91' AGL/965' MSL. **Rwy 9R**, trees beginning 197' from DER, 325' left of centerline, up to 73' AGL/937' MSL. Trees beginning 973' from DER, 339' right of centerline, up to 103' AGL/957' MSL. **Rwy 14**, wind sock 371' from DER, 273' left of centerline, 10' AGL/909' MSL. Tree 1395' from DER, 872' left of centerline, 46' AGL/935' MSL. Tree 2071' from DER, 295' right of centerline, 95' AGL/974' MSL. **Rwy 23**, stacks beginning 681' from DER, 512' left of centerline, up to 64' AGL/963' MSL. Trees beginning 709' from DER, 321' left of centerline, up to 44' AGL/948' MSL. Elevator 1406' from DER, 469' left of centerline, 83' AGL/978' MSL. Trees beginning 1248' from DER, 68' right of centerline, up to 74' AGL/978' MSL. **Rwy 27R**, silos beginning 2476' from DER, 88' left of centerline, 61' AGL/971' MSL. **Rwy 32**, trees beginning 1616' from DER, 210' left of centerline, up to 99' AGL/1003' MSL.

CONNERSVILLE, IN

METTEL FIELD (CEV)
AMDT 2 06271 (FAA)

TAKE-OFF MINIMUMS: **Rwys 4, 22**, NA-VFR use only.
DEPARTURE PROCEDURE: **Rwy 18**, climb via heading 185° to 1500 before proceeding on course.
NOTE: **Rwy 18**, railroad 311' from departure end of runway, 580' left of centerline, 23' AGL/882' MSL. Multiple trees beginning 2280' from departure end of runway, 100' left of centerline, up to 113' AGL/974' MSL. **Rwy 36**, road 120' from departure end of runway, 301' right of centerline, 15' AGL/884' MSL. Railroad 649' from departure end of runway, 578' right of centerline, 23' AGL/892' MSL. Multiple trees beginning 3400' from departure end of runway, on centerline, up to 92' AGL/959' MSL.

COSHOCTON, OH

RICHARD DOWNING (I40)
AMDT 1 80164 (FAA)

TAKE-OFF MINIMUMS: **Rwys 4, 22**, 300-1.

CRAWFORDSVILLE, IN

CRAWFORDSVILLE MU NI (CFJ)
ORIG 10154 (FAA)

NOTE: **Rwy 4**, tree 691' from DER, 324' left of centerline, 100' AGL/889' MSL, vehicle on road, 615' from DER, 41' left of centerline, 17' AGL/816' MSL.

DAYTON, OH

DAYTON-WRIGHT BROTHERS (MGY)
AMDT 3 06271 (FAA)

NOTE: **Rwy 2**, multiple trees and road beginning 440' from departure end of runway, 257' left of centerline, up to 100' AGL/1053' MSL. Multiple trees beginning 672' from departure end of runway, 17' right of centerline, up to 100' AGL/1017' MSL. **Rwy 20**, multiple trees beginning 189' from departure end of runway, 494' left of centerline, up to 100' AGL/1009' MSL. Multiple poles and trees beginning 323' from departure end of runway, 364' right of centerline, up to 100' AGL/1026' MSL.

GREENE COUNTY-LEWIS A. JACKSON
RGNL (I19)

AMDT 1 07074 (FAA)

NOTE: **Rwy 25**, multiple trees and tower beginning 469' from departure end of runway, 499' left of centerline, up to 96' AGL/998' MSL. Multiple trees and towers beginning 839' from departure end of runway, 460' right of centerline, up to 75' AGL/1005' MSL. **Rwy 7**, tree 1449' from departure end of runway, 592' right of centerline, 51' AGL/988' MSL.

JAMES M. COX DAYTON INTL (DAY)

AMDT 3 11069 (FAA)

TAKE-OFF MINIMUMS: **Rwy 18**, 300-1 or std. w/min. climb of 290' per NM to 1300.

NOTE: **Rwy 6R**, tower 3125' from DER, 1117' right of centerline, 150' AGL/1101' MSL. **Rwy 18**, tank 4224' from DER, 1417' left of centerline, 173' AGL/1163' MSL. Numerous bushes and trees beginning 1042' from DER, left and right of centerline, up to 100' AGL/1089' MSL. Wind indicator on building 1142' from DER, 653' left of centerline, 50' AGL/1049' MSL. Antenna on building 1233' from DER, 342' left of centerline, 50' AGL/1049' MSL. Pole 1176' from DER, 469' left of centerline, 50' AGL/1041' MSL. **Rwy 24L**, trees beginning 992' from DER, 523' left of centerline, up to 100' AGL/1056' MSL. Vehicle on road beginning 199' from DER, 457' left of centerline, up to 24' AGL/1021' MSL.

DEFIANCE, OH

DEFIANCE MEMORIAL (DFI)
ORIG 11069 (FAA)

NOTE: **Rwy 12**, trees beginning 398' from DER, 155' right of centerline, up to 50' AGL/749' MSL. Terrain beginning 62' from DER, 1' right of centerline, up to 706' MSL. Vehicle on road 833' from DER, 286' left of centerline, up to 15' AGL/724' MSL. **Rwy 30**, trees and powerlines beginning 527' from DER, beginning 246' left to right of centerline, up to 50' AGL/759' MSL. Vehicle on road beginning 527' from DER, 246' left to right of centerline, up to 15' AGL/724' MSL. Terrain beginning 36' from DER, 17' right of centerline, up to 712' MSL. Terrain beginning 116' from DER, 353' left of centerline, up to 712' MSL.

31 MAY 2012 to 28 JUN 2012

31 MAY 2012 to 28 JUN 2012

12152

TAKE-OFF MINIMUMS AND (OBSTACLE) DEPARTURE PROCEDURES

EC-2

TAKE-OFF MINIMUMS AND (OBSTACLE) DEPARTURE PROCEDURES

12152

DELAWARE, OH

DELAWARE MUNI-JIM MOORE FIELD (DLZ)
ORIG 07298 (FAA)

NOTE: **Rwy 10**, railroad 202' from departure end of runway, 549' left of centerline, 23' AGL/972' MSL. Poles 561' from departure end of runway, 558' right of centerline, up to 60' AGL/1004' MSL. Trees 1180' from departure end of runway, 686' left of centerline, up to 83' AGL/1027' MSL. Tree 1288' from departure end of runway, 733' right of centerline, 61' AGL/1005' MSL. **Rwy 28**, rising terrain beginning 35' from departure end of runway, 189' left of centerline, 950' MSL. Poles 992' from departure end of runway, 599' left of centerline, up to 61' AGL/1005' MSL. Pole 1126' from departure end of runway, 694' right of centerline, 44' AGL/988' MSL. Tree 1233' from departure end of runway, 742' right of centerline, 46' AGL/990' MSL.

EAST LIVERPOOL, OH

COLUMBIANA COUNTY (02G)

AMDT 2 86296 (FAA)

TAKE-OFF MINIMUMS: **Rwys 7, 25**, 400-1.

ELKHART, IN

ELKHART MUNI (EKM)

ORIG 11265 (FAA)

NOTE: **Rwy 9**, trees beginning 2039' from DER, 768' right of centerline, up to 68' AGL/845' MSL. Trees beginning 2649' from DER, 774' left of centerline, up to 90' AGL/867' MSL. **Rwy 18**, trees and spire beginning 592' from DER, 63' right of centerline, up to 63' AGL/835' MSL. Trees beginning 508' from DER, 87' left of centerline, up to 71' AGL/843' MSL. **Rwy 27**, trees beginning 1195' from DER, 241' right of centerline, up to 90' AGL/861' MSL. Trees beginning 1714' from DER, 49' left of centerline, up to 89' AGL/860' MSL. **Rwy 36**, tree and building beginning 845' from DER, 212' right of centerline, up to 58' AGL/836' MSL. Trees beginning 1193' from DER, 240' left of centerline, up to 61' AGL/839' MSL.

ELYRIA, OH

ELYRIA (1G1)

NOTE: **Rwy 9**, road 1198' from departure end of runway, 275' left of centerline, 15' AGL/774' MSL. Tree 2077' from departure end of runway, 778' right of centerline, 100' AGL/859' MSL. **Rwy 27**, tree 68' from departure end of runway, 237' left of centerline, 100' AGL/859' MSL. Tree 527' from departure end of runway, 454' right of centerline, 100' AGL/854' MSL.

EVANSVILLE, IN

EVANSVILLE RGNL (EVV)

AMDT 8 09183 (FAA)

TAKE-OFF MINIMUMS: **Rwy 9**, 300-1. **Rwy 27**, 300-1½ or std. w/ a min. climb of 402' per NM to 800. **Rwy 36**, 300-1¾. DEPARTURE PROCEDURE: **Rwy 22**, climb heading 203° to 1300 before turning right.

NOTE: **Rwy 4**, multiple trees beginning 1259' from DER, 693' left of centerline, up to 100' AGL/539' MSL. **Rwy 9**, water tank, levee, and multiple trees beginning 268' from DER, 13' right of centerline, up to 100' AGL/609' MSL. Multiple trees beginning 2233' from DER, 375' left of centerline, up to 67' AGL/516' MSL. **Rwy 18**, multiple buildings and vehicles on road beginning 265' from DER, 137' right of centerline, up to 100' AGL/447' MSL. Trees, light pole, railroad, and vehicles on road beginning 268' from DER, 10' left of centerline, up to 100' AGL/489' MSL. **Rwy 22**, building vent, sign, poles, and vehicles on road beginning 167' from DER, 85' right of centerline, up to 36' AGL/421' MSL. Multiple trees beginning 2753' from DER, 337' right of centerline, up to 100' AGL/519' MSL. Buildings, trees, and light poles beginning 1128' from DER, 99' left of centerline, up to 125' AGL/495' MSL. **Rwy 27**, multiple trees, pole, and sign beginning 385' from DER, 87' right of centerline, up to 100' AGL/489' MSL. Poles, railroad, and vehicles on road beginning 418' from DER, 3' left of centerline, up to 43' AGL/422' MSL. Multiple trees and towers beginning 861' from DER, 151' left of centerline, up to 181' AGL/649' MSL. **Rwy 36**, multiple trees and building beginning 1563' from DER, 481' right of centerline, up to 100' AGL/619' MSL. Multiple trees and pole beginning 1425' from DER, 112' left of centerline, up to 84' AGL/514' MSL.

FINDLAY, OH

FINDLAY (FDY)

ORIG 07242 (FAA)

NOTE: **Rwy 7**, road 210' from departure end of runway, on runway centerline, 15' AGL/824' MSL. Multiple trees beginning 210' from departure end of runway, 111' right of centerline, up to 81' AGL/885' MSL. Building 2498' from departure end of runway, 878' right of centerline, 113' AGL/921' MSL. **Rwy 18**, tree 2786' from departure end of runway, 151' left of centerline, 72' AGL/876' MSL. **Rwy 25**, multiple elevators beginning 1825' from departure end of runway, 727' right of centerline, 78' AGL/869' MSL. Tree 4566' from departure end of runway, 687' right of centerline, 100' AGL/909' MSL. **Rwy 36**, pole 1192' from departure end of runway, 742' right of centerline, 36' AGL/835' MSL. Tree 1560' from departure end of runway, 499' left of centerline, 53' AGL/847' MSL.

FORT WAYNE, IN

FORT WAYNE INTL (FWA)

AMDT 2A 09127 (FAA)

DEPARTURE PROCEDURE: **Rwy 32**, climb runway heading to 1300' before turning left.

NOTE: **Rwy 5**, trees beginning 927' from DER, 499' left of centerline, 40' AGL/836' MSL. Fence 152' from DER, 521' right of centerline, 12' AGL/808' MSL. Railroad 834' from DER, 582' right of centerline, 23' AGL/820' MSL. Tree 152' from DER, 521' right of centerline, up to 42' AGL/842' MSL. **Rwy 9**, tower 3124' from DER, 1109' left of centerline, 111' AGL/910' MSL. **Rwy 14**, tree 1079' from DER, 667' left of centerline, 23' AGL/825' MSL. **Rwy 27**, obstruction light 370' from DER, 230' left of centerline, 14' AGL/812' MSL. **Rwy 32**, trees beginning 3672' from DER, 611' left of centerline, up to 100' AGL/901' MSL.

31 MAY 2012 to 28 JUN 2012

31 MAY 2012 to 28 JUN 2012

12152

TAKE-OFF MINIMUMS AND (OBSTACLE) DEPARTURE PROCEDURES

EC-2

TAKE-OFF MINIMUMS AND (OBSTACLE) DEPARTURE PROCEDURES

12152

FORT WAYNE, IN (CONT)

SMITH FIELD (SMD)

AMDT 5 10322 (FAA)

TAKE-OFF MINIMUMS: **Rwy 23**, 800-3 or std. with a min. climb of 420' per NM to 1900.

DEPARTURE PROCEDURE: **Rwy 13**, climb on heading between 133°CW to 185° from DER or climb on heading between 313°CW to 133° from DER to 2700 before proceeding on course or min. climb of 250' per NM to 2000 for all other courses. **Rwy 23**, climb on heading 236° to 1900 before proceeding on course. **Rwy 31**, climb on heading between 313°CW to 133° from DER or climb on heading between 250° CW to 313° from DER to 2700 before proceeding on course or min. climb of 250' per NM to 1900 for all other courses.

NOTE: **Rwy 5**, vehicle on road 465' from DER, on centerline, 15' AGL/844' MSL. Trees, light poles, flag poles, power poles, buildings, bus garages and cell tower beginning 345' from DER, 34' right of centerline, up to 153' AGL/974' MSL. Trees, buildings and light poles beginning 234' from DER, 11' left of centerline, up to 72' AGL/896' MSL. **Rwy 13**, vehicle on road 458' from DER, on centerline, 15' AGL/842' MSL. Trees, houses and light pole beginning 21' from DER, 38' right of centerline, up to 100' AGL/929' MSL. Trees, buildings, power poles, hanger, terminal, light pole and flag pole beginning 330' from DER, 25' left of centerline, up to 128' AGL/936' MSL. **Rwy 23**, power poles, light poles, trees, building, house and shed beginning 469' from DER, 6' right of centerline, up to 82' AGL/909' MSL. Trees, houses and light poles beginning 193' from DER, 43' left of centerline, up to 81' AGL/906' MSL. **Rwy 31**, trees, buildings, power poles, garages, light pole and antenna beginning 237' from DER, 30' right of centerline, up to 95' AGL/936' MSL. Trees and vent tank beginning 488' from DER, 202' left of centerline, up to 73' AGL/910' MSL.

FOSTORIA, OH

FOSTORIA METROPOLITAN (FZI)

AMDT 1 10154 (FAA)

NOTE: **Rwy 9**, trees beginning 343' from DER, 584' left of centerline, up to 74' AGL/823' MSL. Trees beginning 26' from DER, 277' right of centerline, up to 75' AGL/820' MSL. **Rwy 27**, trees beginning 938' from DER, 342' left of centerline, up to 100' AGL/859' MSL. Trees beginning 379' from DER, 444' right of centerline, up to 64' AGL/806' MSL. Building 2' from DER, 500' left of centerline, 8' AGL/758' MSL. Building 262' from DER, 523' right of centerline, 34' AGL/776' MSL. SILO 292' from DER, 376' right of centerline, 36' AGL/778' MSL. Pole 898' from DER, 413' right of centerline, 39' AGL/778' MSL. Power pole 961' from DER, 562' right of centerline, 48' AGL/790' MSL.

FRANKFORT, IN

FRANKFORT MUNI (FKR)

ORIG 10154 (FAA)

NOTE: **Rwy 4**, vehicles on highway, beginning 148' from DER, left to right of centerline, 17' AGL/894' MSL. Building 442' from DER, 601' right of centerline, 40' AGL/897' MSL. Building 606' from DER, 373' left of centerline, 40' AGL/917' MSL. Plant 3169' from DER, 712' right of centerline, 87' AGL/942' MSL. **Rwy 9**, crops 389' from DER, left to right of centerline, 10' AGL/872' MSL. **Rwy 22**, crops 200' from DER, left to right of centerline, 10' AGL/867' MSL. Vehicles on roadway beginning 369' from DER, 583' right of centerline, 17' AGL/876' MSL. **Rwy 27**, crops 299' from DER, left to right of centerline, 10' AGL/867' MSL. Vehicles on roadway 743' from DER, left and right of centerline, 17' AGL/876' MSL.

FREMONT, OH

FREMONT (14G)

AMDT 2 09295 (FAA)

TAKE-OFF MINIMUMS: **Rwys 18,36**, NA-Environmental.

NOTE: **Rwy 9**, train 268' from DER, 516' right of centerline, 23' AGL/677' MSL. Trees beginning 3269' from DER, 1265' right of centerline, up to 100' AGL/754' MSL. Multiple trees and buildings beginning 320' from DER, left and right of centerline, up to 100' AGL/749' MSL. **Rwy 27**, road 65' from DER, 4' right of centerline, 15' AGL/669' MSL. Trees beginning 2230' from DER, 834' left of centerline, up to 100' AGL/754' MSL.

SANDUSKY COUNTY RGNL (S24)

ORIG 11237 (FAA)

NOTE: **Rwy 6**, REILs 39' from DER, 93' right of centerline, 8' AGL/659' MSL. REILs 39' from DER, 93' left of centerline, 7' AGL/658' MSL. Trees beginning 796' from DER, 709' left of centerline, up to 91' AGL/737' MSL. **Rwy 24**, REILs 41' from DER, 94' right of centerline, 7' AGL/668' MSL. REILs 41' from DER, 93' left of centerline, 7' AGL/668' MSL. Trees beginning 1569' from DER, left and right of centerline, up to 145' AGL/786' MSL.

FRENCH LICK, IN

FRENCH LICK MUNI (FRH)

ORIG 08101 (FAA)

NOTE: **Rwy 8**, Terrain 59' from departure end of runway, 86' left of centerline, 0' AGL/799' MSL. Trees beginning 184' from departure end of runway, 391' left of centerline, up to 100' AGL/889' MSL. Trees beginning 215' from departure end of runway, 148' right of centerline, up to 100' AGL/849' MSL. **Rwy 26**, Trees beginning 429' from departure end of runway, 90' left of centerline, up to 100' AGL/849' MSL. Trees beginning 580' from departure end of runway, 57' right of centerline, up to 100' AGL/909' MSL.

31 MAY 2012 to 28 JUN 2012

31 MAY 2012 to 28 JUN 2012

12152

TAKE-OFF MINIMUMS AND (OBSTACLE) DEPARTURE PROCEDURES

TAKE-OFF MINIMUMS AND (OBSTACLE) DEPARTURE PROCEDURES

12152

GALION, OH

GALION MUNI (GQQ)
ORIG 11237 (FAA)

NOTE: **Rwy 5**, trees beginning 354' from DER, 335' right of centerline, up to 50' AGL/1269' MSL.

Rwy 23, vehicles on road beginning 0' from DER, 348' right of centerline, up to 15' AGL/1244' MSL. Vehicles on road beginning 0' from DER, 362' left of centerline, up to 17' AGL/1236' MSL. Train and powerlines 0' from DER, 351' left of centerline, up to 30' AGL/1252' MSL. Trees beginning 341' from DER, right and left of centerline, up to 50' AGL/1279' MSL.

GALLIPOLIS, OH

GALLIA-MEIGS RGNL (GAS)
AMDT 2A 07270 (FAA)

TAKE-OFF MINIMUMS: **Rwy 5**, 500-1. **Rwy 23**, 800-3 or std. w/min. climb of 331' per NM to 1700.

DEPARTURE PROCEDURE: **Rwy 5**, climb straight ahead to 2100 before proceeding on course.

Rwy 23, climb via 215' track to 1500 before proceeding on course.

GARY, IN

GARY/CHICAGO INTL (GYG)
AMDT 7 10322 (FAA)

TAKE-OFF MINIMUMS: **Rwy 2**, 300-1½ or std. with a min. climb of 321' per NM to 900. **Rwy 20**, 300-1 or std. with a min. climb of 256' per NM to 1300.

DEPARTURE PROCEDURE: **Rwy 20**, climb heading 203° to 1300 before proceeding on course.

NOTE: **Rwy 2**, stacks, towers, buildings, trees, pole, and vehicle on road beginning 554' from DER, 82' right of centerline, up to 201' AGL/791' MSL. Stacks, towers, and tree beginning 1489' from DER, 236' left of centerline, up to 231' AGL/823' MSL. Vehicle on road 571' from DER, on runway centerline, 15' AGL/605' MSL. **Rwy 20**, trees, stacks, lights, and pole beginning 203' from DER, 108' right of centerline, up to 152' AGL/747' MSL. Trees and lights beginning 883' from DER, 26' left of centerline, up to 69' AGL/658' MSL. Vehicle on road, 1048' from DER, on runway centerline, 17' AGL/631' MSL. **Rwy 12**, trees, and tower beginning 1617' from DER, 451' left of centerline, up to 105' AGL/699' MSL. Trees, and poles beginning 1681' from DER, 238' right of centerline, up to 75' AGL/674' MSL. **Rwy 30**, light on localizer antenna, 130' from DER, on runway centerline, 10' AGL/596' MSL. Trees, towers, antennas, and railroad beginning 139' from DER, 5' right of centerline, up to 106' AGL/695' MSL. Railroad, tower, and vehicle on road beginning 194' from DER, 7' left of centerline, up to 81' AGL/670' MSL.

GEORGETOWN, OH

BROWN COUNTY (GEO)
AMDT 2 10238 (FAA)

NOTE: **Rwy 18**, vehicle on road beginning 430' from DER, 116' right of centerline, up to 15' AGL/974' MSL. Vehicle on road beginning 400' from DER, 155' left of centerline, up to 15' AGL/974' MSL.

Rwy 36, trees 328' from DER, 232' right of centerline, up to 100' AGL/1059' MSL. Trees 301' from DER, 452' left of centerline, up to 100' AGL, 1069' MSL.

GOSHEN, IN

GOSHEN MUNI (GSH)
ORIG 08157 (FAA)

NOTE: **Rwy 5**, Transmission tower, 4050' from departure end of runway, 1247' right of centerline, 116' AGL/941' MSL. **Rwy 9**, Post 42' from departure end of runway, 251' right of centerline, 12' AGL/831' MSL. Pole 1030' from departure end of runway, 619' right of centerline, 37' AGL/862' MSL. Pole 986' from departure end of runway, 465' left of centerline, 30' AGL/855' MSL. Trees beginning 2493' from departure end of runway, 515' left of centerline, up to 100' AGL/966' MSL. **Rwy 23**, Daymarker 95' from departure end of runway, 85' right of centerline, 4' AGL/818' MSL. Terrain 3' from departure end of runway, 42' left of centerline, 0' AGL/821' MSL. Sign 47' from departure end of runway, 500' left of centerline, 3' AGL/822' MSL. Terrain 61' from departure end of runway, 418' left of centerline, 0' AGL/821' MSL. Road & vehicle 933' from departure end of runway, 736' left of centerline, 17' AGL/841' MSL. **Rwy 27**, Trees beginning 2173' from departure end of runway, 210' right of centerline, up to 100' AGL/914' MSL. Trees beginning 2072' from departure end of runway, 124' left of centerline, up to 100' AGL/914' MSL.

GREENCASTLE, IN

PUTNAM COUNTY (417)
ORIG 08045 (FAA)

NOTE: **Rwy 18**, Road and vehicle 365' from departure end of runway, 577' right of centerline, 23' AGL/832' MSL. Pole 598' from departure end of runway, 374' right of centerline, 27' AGL/836' MSL. Pole 640' from departure end of runway, 423' right of centerline, 28' AGL/837' MSL. Building 773' from departure end of runway, 525' right of centerline, 32' AGL/841' MSL. Trees beginning 554' from departure end of runway, 428' right of centerline, up to 100' AGL/899' MSL. Fence 128' from departure end of runway, 306' left of centerline, 13' AGL/822' MSL. Fence 214' from departure end of runway, 307' left of centerline, 16' AGL/825' MSL. Trees beginning 901' from departure end of runway, 277' left of centerline, up to 100' AGL/865' MSL. **Rwy 36**, Terrain beginning 5' from departure end of runway, 85' right of centerline, 0' AGL/854' MSL. STPL 1836' from departure end of runway, 310' right of centerline 45' AGL/894' MSL. Trees beginning 658' from departure end of runway, 115' right of centerline, up to 100' AGL/959' MSL. Antenna on building 2725' from departure end of runway, 18' left of centerline, 64' AGL/913' MSL. Trees beginning 30' from departure end of runway, 250' left of centerline, up to 100' AGL/949' MSL.

GREENSBURG, IN

GREENSBURG MUNI (I34)
AMDT 1A 09099 (FAA)

TAKE-OFF MINIMUMS: **Rwy 36**, 300-1.

31 MAY 2012 to 28 JUN 2012

31 MAY 2012 to 28 JUN 2012

12152

TAKE-OFF MINIMUMS AND (OBSTACLE) DEPARTURE PROCEDURES

EC-2

TAKE-OFF MINIMUMS AND (OBSTACLE) DEPARTURE PROCEDURES

12152

GRIFFITH, IN

GRIFFITH - MERRILLVILLE (05C)

AMDT 4 07074 (FAA)

TAKE-OFF MINIMUMS: **Rwy 8**, 300-1 or std. w/min. climb of 502' per NM to 1000.

NOTE: **Rwy 8**, multiple trees, and poles beginning 5' from departure end of runway, 165' left of centerline, up to 100' AGL/744' MSL. Tower 4170' from departure end of runway, 1386' left of centerline, 259' AGL/900' MSL. Multiple trees, and poles beginning 125' from departure end of runway, 68' right of centerline, up to 100' AGL/744' MSL. **Rwy 26**, multiple poles, trees, and building beginning 146' from departure end of runway, 21' right of centerline, up to 100' AGL/744' MSL. Multiple trees, and poles beginning 25' from departure end of runway, 84' left of centerline, up to 100' AGL/744' MSL.

HAMILTON, OH

BUTLER COUNTY RGNL (HAO)

AMDT 4 11069 (FAA)

TAKE-OFF MINIMUMS: **Rwy 11**, 800-3 or std. w/min. climb of 240' per NM to 1700. **Rwy 29**, 300-1 or std. w/min. climb of 480' per NM to 900.

DEPARTURE PROCEDURE: **Rwy 11**, climb heading 115° to 1700 before proceeding on course.

NOTE: **Rwy 11**, trees beginning 940' from DER, 129' right of centerline, up to 67' AGL/717' MSL. Poles beginning 2963' from DER, 168' left of centerline, up to 61' AGL/711' MSL. **Rwy 29**, bush 155' from DER, 277' right of centerline, 7' AGL/641' MSL. Building 533' from DER, 375' left of centerline, 37' AGL/657' MSL. Antenna 748' from DER, 526' left of centerline, 61' AGL/690' MSL. Trees beginning 964' from DER, 104' right of centerline, up to 65' AGL/814' MSL. Trees beginning 1123' from DER, 59' left of centerline, up to 69' AGL/721' MSL. Vehicle on road 1947' from DER, 418' right of centerline, 15' AGL/703' MSL. Pole 2218' from DER, 421' right of centerline, 12' AGL/721' MSL. Buildings beginning 2283' from DER, 479' right of centerline, up to 24' AGL/724' MSL.

HARRISON, OH

CINCINNATI WEST (I67)

AMDT 2 07186 (FAA)

TAKE-OFF MINIMUMS: **Rwy 1**, 500-3 or std. w/min. climb of 385' per NM to 1200. **Rwys 9, 27**, NA-obstacles. **Rwy 19**, 500-3 or std. w/min. climb of 253' per NM to 1300.

NOTE: **Rwy 1**, multiple trees beginning 5364' from departure end of runway, 180' right of centerline, up to 100' AGL/915' MSL. Multiple trees beginning 5596' from departure end of runway, 1180' left of centerline up to 100' AGL/909' MSL. Multiple trees beginning 1.5 NM from departure end of runway, 2293' left of centerline, up to 200' AGL/849' MSL. **Rwy 19**, road 23' from departure end of runway, on centerline, 15' AGL/599' MSL.

HILLSBORO, OH

HIGHLAND COUNTY (HOC)

AMDT 2 91150 (FAA)

TAKE-OFF MINIMUMS: **Rwys 5, 23**, 300-1.

HUNTINGBURG, IN

HUNTINGBURG (HNB)

TAKE-OFF MINIMUMS: **Rwy 9**, 300-1.

HUNTINGTON, IN

HUNTINGTON MUNI (HHG)

AMDT 1 87183 (FAA)

TAKE-OFF MINIMUMS: **Rwy 9**, 400-1.

INDIANAPOLIS, IN

EAGLE CREEK AIRPARK (EYE)

AMDT 2 11293 (FAA)

DEPARTURE PROCEDURE: **Rwy 3**, climb heading 028° to 2100 before turning right.

NOTE: **Rwy 3**, antenna on building 859' from DER, 524' right of centerline, 35' AGL/851' MSL. Pole 507' from DER, 631' left of centerline, 38' AGL/860' MSL. Multiple trees beginning 2015' from DER, 583' left of centerline, up to 89' AGL/904' MSL. **Rwy 21**, airport beacon 10' from DER, 464' left of centerline, 54' AGL/867' MSL. Pole 167' from DER, 385' left of centerline, 33' AGL/848' MSL. Antenna on building 363' from DER, 258' left of centerline, 14' AGL/828' MSL. Poles 699' from DER, 38' AGL/849' MSL. Multiple trees beginning 1383' from DER, 57' left of centerline, up to 94' AGL/904' MSL. Vehicles on road, 310' from DER, right and left of centerline, 15' AGL/833' MSL. Trees 677' from DER, 522' right of centerline, 99' AGL/889' MSL. Multiple trees beginning 761' from DER, 267' right of centerline, up to 111' AGL/901' MSL.

GREENWOOD MUNI (HFY)

AMDT 3 11293 (FAA)

TAKE-OFF MINIMUMS: **Rwy 19**, 300-1 or std. w/min. climb of 471' per NM to 1200.

DEPARTURE PROCEDURE: **Rwy 1**, climb heading 010° to 1500 before turning right.

NOTE: **Rwy 1**, hangar 72' from DER, 500' left of centerline, 23' AGL/839' MSL. Pole 525' from DER, 224' left of centerline, 17' AGL/833' MSL. Pole 689' from DER, 627' left of centerline, 46' AGL/864' MSL. Multiple trees beginning 1274' from DER, 394' left of centerline, up to 85' AGL/899' MSL. Building 558' from DER, 409' right of centerline, 40' AGL/858' MSL. Pole 1263' from DER, 722' right of centerline, 37' AGL/860' MSL. Pole 1276' from DER, 482' right of centerline, 34' AGL/856' MSL. Multiple trees beginning 2636' from DER, 375' right of centerline, up to 77' AGL/898' MSL. **Rwy 19**, REIL 38' from DER, 75' right and left of centerline, 3' AGL/823' MSL. Multiple trees 1168' from DER, 288' left of centerline, up to 67' AGL/887' MSL. Trees 3111' from DER, 632' left of centerline, 64' AGL/914' MSL. Multiple trees beginning 1577' from DER, 379' right of centerline, up to 82' AGL/902' MSL. Trees 2832' from DER, 385' right of centerline, 88' AGL/923' MSL. Tank 4134' from DER, 70' right of centerline, 120' AGL/985' MSL.

31 MAY 2012 to 28 JUN 2012

31 MAY 2012 to 28 JUN 2012

12152

TAKE-OFF MINIMUMS AND (OBSTACLE) DEPARTURE PROCEDURES

EC-2

TAKE-OFF MINIMUMS AND (OBSTACLE) DEPARTURE PROCEDURES

12152

INDIANAPOLIS, IN (CON'T)

HENRICKS COUNTY-GORDON GRAHAM FLD (2R2)

ORIG 08157 (FAA)

NOTE: **Rwy 18**, Pole 746' from departure end of runway, on centerline, 60' AGL/919' MSL, trees 2091' from departure end of runway, 625' left of centerline, 100' AGL/949' MSL. **Rwy 36**, Trees 1302' from departure end of runway, 648' right of centerline, 100' AGL/1009' MSL. Tree 3529' from departure end of runway, 788' right of centerline, 100' AGL/1009' MSL. Tree 5244' from departure end of runway, 1005' left of centerline, 100' AGL/1029' MSL.

INDIANAPOLIS EXECUTIVE (TYQ)

AMDT 1 11293 (FAA)

NOTE: **Rwy 18**, tree 1870' from DER, 524' left of centerline, 52' AGL/971' MSL. **Rwy 36**, poles 1115' from DER, 321' left of centerline, 33' AGL/958' MSL. Multiple trees beginning 1257' from DER, 320' right of centerline, up to 80' AGL/999' MSL. Multiple trees beginning 2266' from DER, left and right of centerline, up to 126' AGL/1035' MSL.

INDIANAPOLIS INTL (IND)

ORIG 07018 (FAA)

NOTES: **Rwy 5R**, tower 3756' from departure end of runway, 1048' left of centerline, 111' AGL/901' MSL. Rod on obstruction light dome 3765' from departure end of runway, 1076' left of centerline, 107' AGL/901' MSL. **Rwy 5L**, rod on obstruction light MCWV tower 5052' from departure end of runway, 140' right of centerline, 129' AGL/923' MSL. Tower 5073' from departure end of runway, 93' right of centerline, 128' AGL/923' MSL. **Rwy 23R**, tree 5159' from departure end of runway, 1144' right of centerline, 101' AGL/870' MSL. Tree 3295' from departure end of runway, 948' right of centerline, 78' AGL/822' MSL. **Rwy 32**, antenna 2370' from departure end of runway, 755' right of centerline, 70' AGL/849' MSL. Tree 2244' from departure end of runway, 707' right of centerline, 66' AGL/845' MSL.

INDIANAPOLIS METROPOLITAN (UMP)

AMDT 3 11125 (FAA)

TAKE-OFF MINIMUMS: **Rwy 15**, NA-Obstacles. DEPARTURE PROCEDURE: **Rwy 33**, climb heading 329° to 1400 before turning left. NOTE: **Rwy 33**, vehicles on road 367' from DER, crossing left and right of centerline, up to 15' AGL/799' MSL. Trees beginning 682' from DER, 69' right of centerline, up to 100' AGL/879' MSL. Trees beginning 1805' from DER, 648' left of centerline, up to 100' AGL/874' MSL.

INDIANAPOLIS RGNL (MQJ)

AMDT 2 10322 (FAA)

TAKE-OFF MINIMUMS: **Rwy 34**, 300-1 or std. w/ min. climb of 347' per NM to 1100. DEPARTURE PROCEDURE: **Rwy 25**, climb heading 270° to 2000 before turning left. NOTE: **Rwy 7**, trees beginning 1318' from DER, 751' right of centerline, up to 100' AGL/959' MSL. **Rwy 25**, tree 2348' from DER, 993' left of centerline, 100' AGL/969' MSL. **Rwy 16**, trees beginning 1635' from DER, 668' left of centerline, up to 100' AGL/969' MSL. Windsock 235' from DER, 549' right of centerline, 9' AGL/864' MSL. **Rwy 34**, trees beginning 1640' from DER, 311' left of centerline, up to 100' AGL/964' MSL. Antennas and towers beginning 3682' from DER, 1366' right of centerline, up to 167' AGL/1022' MSL.

JACKSON, OH

JAMES A. RHODES (I43)

AMDT 4 07354 (FAA)

TAKE-OFF MINIMUMS: **Rwy 1**, 300-2. **Rwy 19**, 300-1½ DEPARTURE PROCEDURE: **Rwy 1**, climb heading 010° to 1500 before turning left.

NOTE: **Rwy 1**, car on road 475' from departure end of runway, on centerline, 15' AGL/754' MSL. Trees 2570' from departure end of runway, 613' left of centerline, 100' AGL/936' MSL. Trees 2810' from departure end of runway, 1243' left of centerline, 100' AGL/989' MSL. Trees 1.1 NM from departure end of runway, 1355' right of centerline, 100' AGL/949' MSL. Tank 1.4 NM from departure end of runway, 1870' left of centerline, 112' AGL/1008' MSL. Rising terrain beginning 1320' from departure end of runway, 316' left of centerline, up to 889' MSL. **Rwy 19**, pole 1137' from departure end of runway, 114' left of centerline, 39' AGL/779' MSL. Trees 1869' from departure end of runway, 138' right of centerline, 100' AGL/840' MSL. Trees 2349' from departure end of runway, 103' right of centerline, 100' AGL/899' MSL. Rising terrain beginning 386' from departure end of runway, 587' right of centerline, up to 989' MSL.

JEFFERSONVILLE, IN

CLARK RGNL (JVY)

AMDT 2 10266 (FAA)

DEPARTURE PROCEDURE: **Rwy 14**, climb heading 140° to 1300 before turning west. **Rwy 18**, climb heading 182° to 1500 before turning west. **Rwy 32**, climb heading 335° to 1900 before turning west. **Rwy 36**, climb heading 002° to 1600 before turning west.

NOTE: **Rwy 14**, sign 22' from DER, 88' right of centerline, 22' AGL/465' MSL. Tree 262' from DER, 361' left of centerline, 77' AGL/527' MSL. Trees beginning 499' from DER, 175' left of centerline, up to 93' AGL/543' MSL. Trees beginning 596' from DER, 175' right of centerline, up to 96' AGL/536' MSL. Transmission tower and tree beginning 1668' from DER, 306' left of centerline, up to 89' AGL/569' MSL. Tree and transmission towers 1942' from DER, 98' right of centerline, 145' AGL/603' MSL. **Rwy 18**, tree 262' from DER, 524' left of centerline, 60' AGL/490' MSL. Trees beginning 301' from DER, 474' right of centerline, up to 65' AGL/495' MSL. Trees and transmission towers beginning 626' from DER, 105' left of centerline, up to 146' AGL/605' MSL. Trees and light pole beginning 764' from DER, 154' right of centerline, up to 150' AGL/603' MSL. Trees beginning 1375' from DER, 35' left of centerline, up to 121' AGL/551' MSL. Trees beginning 1720' from DER, 28' right of centerline, up to 99' AGL/559' MSL. Transmission towers and catenary beginning 4640' from DER, up to 120' AGL/600' MSL. **Rwy 32**, sign 19' from DER, 87' left of centerline, 14' AGL/474' MSL. Trees beginning 192' from DER, 324' right of centerline, up to 76' AGL/546' MSL. Tree 385' from DER, 269' left of centerline, 61' AGL/531' MSL. Building 559' from DER, 165' right of centerline, 25' AGL/485' MSL. Pole and tree 1026' from DER, 25' left of centerline, up to 47' AGL/507' MSL. Tree 1053' from DER, 510' left of centerline, 90' AGL/560' MSL. Tree 2052' from DER, 12' left of centerline, 99' AGL/569' MSL. **Rwy 36**, tree 1736' from DER, 909' right of centerline, 73' AGL/533' MSL.

KENDALLVILLE, IN

KENDALLVILLE MUNI (C62)

AMDT 2 86016 (FAA)

DEPARTURE PROCEDURE: **Rwys 10, 28**, climb runway heading to 1500 before turning south.

31 MAY 2012 to 28 JUN 2012

31 MAY 2012 to 28 JUN 2012

12152

TAKE-OFF MINIMUMS AND (OBSTACLE) DEPARTURE PROCEDURES

TAKE-OFF MINIMUMS AND (OBSTACLE) DEPARTURE PROCEDURES

12152

KENT, OH

KENT STATE UNIV (1G3)
ORIG 12152 (FAA)

NOTE: **Rwy 1**, trees, transmission poles, and a chimney beginning 72' from DER, 369' right of centerline, up to 69' AGL/1179' MSL. Trees and a transmission pole beginning 394' from DER, 249' left of centerline, up to 97' AGL/1203' MSL. **Rwy 19**, vehicles on road, poles, and a tree beginning 331' from DER, 325' left of centerline, up to 42' AGL/1144' MSL. Trees and a building beginning 61' from DER, 412' from centerline, up to 81' AGL/1185' MSL. Trees beginning 1240' from DER, left and right of centerline, up to 109' AGL/1218' MSL.

KENTON, OH

HARDIN COUNTY (I95)
AMDT 3 11013 (FAA)

NOTE: **Rwy 4**, trees, buildings, antenna on building, light poles, and flag poles beginning 31' from DER, 240' left of centerline, up to 29' AGL/1027' MSL. Sign 103' from DER, 204' right of centerline, 8' AGL/1012' MSL. Trees beginning 877' from DER, left and right of centerline, up to 103' AGL/1093' MSL. **Rwy 22**, trees and buildings beginning 7' from DER, 484' left of centerline, up to 77' AGL/1103' MSL. Trees beginning 179' from DER, 51' right of centerline, up to 108' AGL/1122' MSL. Trees beginning 1345' from DER, left and right of centerline, up to 115' AGL/1158' MSL.

KNOX, IN

STARKE COUNTY (OXI)
ORIG 08269 (FAA)

TAKE-OFF MINIMUMS: **Rwys 9, 27**, NA-Environmental. NOTE: **Rwy 36**, tree 1234' from departure end of runway, 477' left of centerline, 35' AGL/715' MSL. **Rwy 18**, trees beginning 2442' from departure end of runway, 135' right of centerline, up to 86' AGL/769' MSL. Tree 21' from departure end of runway, 449' left of centerline, 5' AGL/668' MSL.

KOKOMO, IN

KOKOMO MUNI (OKK)
ORIG 10210 (FAA)

NOTE: **Rwy 5**, trees beginning 501' from DER, 362' right of centerline, up to 41' AGL/870' MSL. Silo and trees beginning 639' from DER, 457' left of centerline, up to 52' AGL/881' MSL. **Rwy 14**, trees, bushes and silo beginning 7' from DER, 196' left of centerline, up to 51' AGL/890' MSL. **Rwy 23**, sign, pole, trees and road beginning 22' from DER, 7' right of centerline, up to 66' AGL/905' MSL. **Rwy 32**, hangar and pole beginning 153' from DER, 490' right of centerline, up to 23' AGL/852' MSL. Trees and silo beginning 949' from DER, 279' left of centerline, up to 51' AGL/877' MSL.

LA PORTE, IN

LA PORTE MUNI (PPO)
AMDT 2 07186 (FAA)

NOTE: **Rwy 14**, power line beginning 4937' from departure end of runway, 670' right of centerline, 150' AGL/934' MSL. **Rwy 20**, power line beginning 3978' from departure end of runway, 1566' left of centerline, 150' AGL/959' MSL.

LAFAYETTE, IN

PURDUE UNIVERSITY (LAF)
AMDT 1 07130 (FAA)

TAKE-OFF MINIMUMS: **Rwy 5**, 300-1¼ or std. w/ min. climb of 342' per NM to 1000. **Rwy 23**, 400-2¼ or std. w/ min. climb of 220' per NM to 1100.

NOTE: **Rwy 5**, multiple trees and buildings beginning 290' from departure end of runway, 33' right of centerline, up to 167' AGL/782' MSL. Multiple trees, buildings, and antennas beginning 45' from departure end of runway, 25' left of centerline, up to 227' AGL/850' MSL. **Rwy 10**, multiple trees beginning 1230' from departure end of runway, 394' right of centerline, up to 80' AGL/639' MSL. Antenna 258' from departure end of runway, 323' left of centerline, 14' AGL/613' MSL. **Rwy 23**, rod on obstruction light tower 1.9 NM from departure end of runway, 272' left of centerline, 314' AGL/915' MSL. Tree 90' from departure end of runway, 235' left of centerline, 34' AGL/613' MSL. **Rwy 28**, multiple trees beginning 397' from departure end of runway, 461' left of centerline, up to 57' AGL/656' MSL. Tree 3382' from departure end of runway, 973' right of centerline, 68' AGL/697' MSL.

LANCASTER, OH

FAIRFIELD COUNTY (LHQ)
AMDT 1 90347 (FAA)

TAKE-OFF MINIMUMS: **Rwy 10**, 400-1. **Rwy 28**, 300-1.

LEBANON, OH

LEBANON-WARREN COUNTY (I68)
ORIG 11293 (FAA)

NOTE: **Rwy 1**, tree 305' from DER, 159' left of centerline, 53' AGL/951' MSL. Trees 1018' from DER, 511' left of centerline, up to 100' AGL/1099' MSL. Trees 1297' from DER, 117' right of centerline, up to 100' AGL/999' MSL. **Rwy 19**, aircraft on ramp beginning abeam DER, 70' right of centerline, up to 17' AGL/901' MSL. Vehicles on roadway, beginning abeam DER, 220' left of centerline, up to 15' AGL/904' MSL. Vehicles on roadway, 476' from DER, left and right of centerline, up to 15' AGL/904' MSL. Trees 1777' from DER, 934' right of centerline, up to 100' AGL/999' MSL. Trees 2005' from DER, left and right of centerline, up to 100' AGL/989' MSL.

LIMA, OH

LIMA ALLEN COUNTY (AOH)
AMDT 1 10042 (FAA)

TAKE-OFF MINIMUMS: **Rwys 14, 32**, NA-Environmental.

NOTE: **Rwy 10**, bush beginning 162' from DER, 310' right of centerline, up to 4' AGL/983' MSL. **Rwy 28**, multiple trees beginning 1343' from DER, 160' right of centerline, up to 71' AGL/1015' MSL.

LOGANSPORT, IN

LOGANSPORT/CASS COUNTY (GGP)
AMDT1 11125 (FAA)

NOTE: **Rwy 9**, tree 2218' from DER, 489' right of centerline, 65' AGL/794' MSL. **Rwy 27**, powerpoles beginning 925' from DER, 334' left of centerline, 40' AGL/773' MSL. Tree 2042' from DER, 143' left of centerline, 72' AGL/801' MSL. Powerpoles beginning 639' from DER, 332' right of centerline, 40' AGL/767' MSL.

31 MAY 2012 to 28 JUN 2012

31 MAY 2012 to 28 JUN 2012

12152

TAKE-OFF MINIMUMS AND (OBSTACLE) DEPARTURE PROCEDURES

TAKE-OFF MINIMUMS AND (OBSTACLE) DEPARTURE PROCEDURES

12152

LONDON, OH

MADISON COUNTY (UYF)
ORIG 90347 (FAA)

TAKE-OFF MINIMUMS: **Rwy 27**, 300-1.

LORAIN/ELYRIA, OH

LORAIN COUNTY RGNL (LPR)
ORIG 06159 (FAA)

NOTE: **Rwy 7**, multiple trees beginning 973' from departure end of runway, 293' right of centerline, up to 75' AGL/865' MSL. Multiple trees beginning 839' from departure end of runway, 636' left of centerline, up to 47' AGL/836' MSL. **Rwy 25**, bush 583' from departure end of runway, 468' right of centerline, 10' AGL/809' MSL. Tree 1587' from departure end of runway, 698' left of centerline, 44' AGL/838' MSL. Tree 2277' from departure end of runway, 435' right of centerline, 58' AGL/854' MSL.

LOWELL, IN

LOWELL (C97)
ORIG 82357 (FAA)

TAKE-OFF MINIMUMS: **Rwy 36**, 300-1.

MADISON, IN

MADISON MUNI (IMS)
AMDT 2 08213(FAA)

NOTE: **Rwy 3**, Vehicle on road 625' from departure end of runway, on centerline, 15' AGL/844' MSL. Antenna on building and trees beginning 170' from departure end of runway, 432' left of centerline, up to 85' AGL/904' MSL. Poles and trees beginning 526' from departure end of runway, 64' right of centerline, up to 130' AGL/959' MSL. **Rwy 21**, Vehicle on road 575' from departure end of runway, on centerline, 15' AGL/824' MSL. Trees and poles beginning 285' from departure end of runway, 16' left of centerline, up to 157' AGL/947' MSL. Trees and pole beginning 116' from departure end of runway, 1' right of centerline, up to 123' AGL/912' MSL.

MANSFIELD, OH

MANSFIELD LAHM RGNL (MFD)
ORIG 09071 (FAA)

NOTE: **Rwy 5**, trees 1337' from DER, 209' right of centerline, 78' AGL/1318' MSL. Trees 1494' from DER, 410' left of centerline, 80' AGL/1330' MSL. **Rwy 32**, trees 2399' from DER, 868' right of centerline, 90' AGL/1310' MSL.

MARION, IN

MARION MUNI (MZZ)
ORIG 02164 (FAA)

NOTE: **Rwy 4**, trees 938' from departure end of runway, 696' right of centerline, 67' AGL/914' MSL. **Rwy 15**, trees 627' from departure end of runway, 263' right of centerline, 82' AGL/929' MSL. **Rwy 22**, trees 1144' from departure end of runway, 783' left of centerline, 89' AGL/936' MSL. **Rwy 33**, trees 1005' from departure end of runway, 728' left of centerline, 99' AGL/946' MSL.

MARION, OH

MARION MUNI (MNN)
ORIG 07242 (FAA)

DEPARTURE PROCEDURE: **Rwy 25**, climb heading 245° to 1600 before turning right.

NOTE: **Rwy 7**, trees 3283' from departure end of runway, 273' left of centerline, up to 89' AGL/1088' MSL.

Multiple trees beginning 36' from departure end of runway, 280' right of centerline, up to 43' AGL/1033' MSL. **Rwy 13**, trees 512' from departure end of runway, 277' left of centerline, up to 100' AGL/1089' MSL. Road 491' from departure end of runway, 15' AGL/1004' MSL. **Rwy 25**, obstruction light on antenna 419' from departure end of runway, 407' left of centerline, up to 13' AGL/1008' MSL. Road 434' from departure end of runway, 15' AGL/1004' MSL. **Rwy 31**, trees 2186' from departure end of runway, up to 100' AGL/1089' MSL. Road 355' from departure end of runway, 485' left of centerline, 15' AGL/1004' MSL.

MARYSVILLE, OH

UNION COUNTY (MRT)
AMDT 2 89320 (FAA)

TAKE-OFF MINIMUMS: **Rwy 9**, 300-1.

MEDINA, OH

MEDINA MUNI (1G5)
AMDT 4 10322 (FAA)

NOTE: **Rwy 1**, vehicle on road 534' from DER, on centerline 15' AGL/1214' MSL. Trees beginning 562' from DER, 588' left of centerline, up to 100' AGL/1279' MSL. Trees beginning 1925' from DER on centerline, up to 100' AGL/1319' MSL. **Rwy 9**, trees beginning 305' from DER, 396' right of centerline, up to 100' AGL/1249' MSL. Tower 3626' from DER, 533' left of centerline, 189' AGL/1321' MSL. **Rwy 19**, trees beginning at DER, 112' left of centerline, up to 100' AGL/1289' MSL. Trees beginning 1490' from DER, 150' right of centerline, up to 100' AGL/1289' MSL. **Rwy 27**, trees beginning at DER, 345' left of centerline, up to 100' AGL/1319' MSL. Trees beginning at DER, 366' right of centerline, up to 100' AGL/1279' MSL. Vehicle on road 501' from DER, on centerline, 15' AGL/1184' MSL.

MICHIGAN CITY, IN

MICHIGAN CITY MUNI-PHILLIPS FIELD (MGC)
AMDT 2 10266 (FAA)

DEPARTURE PROCEDURE: **Rwy 20**, climb heading 203° to 1200 before turning left.

NOTE: **Rwy 2**, vehicle on road beginning 97' from DER, 191' left of centerline, up to 15' AGL/654' MSL. Vehicle on road 374' from DER, 555' right of centerline, 15' AGL/674' MSL. Trees beginning 169' from DER, left and right of centerline, up to 50' AGL/709' MSL. **Rwy 20**, trees beginning at DER, 181' right of centerline, up to 50' AGL/709' MSL. Vehicles on road 208' from DER, left and right of centerline, 17' AGL/676' MSL. Trees beginning 1418' from DER, left and right of centerline, up to 50' AGL/719' MSL.

31 MAY 2012 to 28 JUN 2012

31 MAY 2012 to 28 JUN 2012

12152

TAKE-OFF MINIMUMS AND (OBSTACLE) DEPARTURE PROCEDURES

EC-2

TAKE-OFF MINIMUMS AND (OBSTACLE) DEPARTURE PROCEDURES

12152

MIDDLEFIELD, OH

GEAUGA COUNTY (7G8)

AMDT 3 06159 (FAA)

NOTE: **Rwy 11**, railroad 331' from departure end of runway, 315' left of centerline, 23' AGL/1182' MSL. Trees 3144' from departure end of runway, 671' left of centerline, 100' AGL/1249' MSL. **Rwy 29**, railroad 349' from departure end of runway, 521' left of centerline, 23' AGL/1212' MSL. Multiple buildings 993' from departure end of runway, 294' right of centerline, 40' AGL/1239' MSL. Trees 1875' from departure end of runway, 791' right of centerline, 100' AGL/1319' MSL. Tank 2251' from departure end of runway, 578' right of centerline, 125' AGL/1315' MSL.

MIDDLETOWN, OH

MIDDLETOWN RGNL/HOOK FIELD (MWO)

AMDT 1 09295(FAA)

TAKE-OFF MINIMUMS: **Rwys 8, 23, 300-1.****Rwy 26**, 400-1.DEPARTURE PROCEDURE: **Rwys 5, 8, 23, 26**, climb on runway heading to 1700' before proceeding on course.

MILLERSBURG, OH

HOLMES COUNTY (10G)

AMDT 1 10154 (FAA)

TAKE-OFF MINIMUMS: **Rwys 9, 27, 300-1.**NOTE: **Rwy 9**, trees beginning 520' from DER, 4' right of centerline, up to 80' AGL/1239' MSL. **Rwy 27**, pole 507' from DER, 251' right of centerline, 34' AGL/1251' MSL.

MONTICELLO, IN

WHITE COUNTY (MCX)

AMDT 2 85101 (FAA)

TAKE-OFF MINIMUMS: **Rwy 36**, 600-1 or std. with a min. climb of 250' per NM to 1300.

MT. GILEAD, OH

MORROW COUNTY (419)

AMDT 2 10322

NOTE: **Rwy 10**, trees 858' from DER, 331' right of centerline, 100' AGL/1189' MSL. Trees 963' from DER, 380' left of centerline, 100' AGL/1189' MSL.**Rwy 28**, trees beginning 877' from DER, 302' right of centerline, up to 100' AGL/1159' MSL. Trees 324' from DER, 494' right of centerline, 100' AGL/1169' MSL. Vehicles on road beginning 228' from DER, extending from 542' right to 674' left of centerline up to 15' AGL/1084' MSL.

MT. VERNON, OH

KNOX COUNTY (413)

ORIG 09015 (FAA)

NOTE: **Rwy 28**, trees 2121' from departure end of runway, 361' right of centerline, 47' AGL/1246' MSL.

MUNCIE, IN

DELAWARE COUNTY RGNL (MIE)

AMDT 3 06271 (FAA)

NOTE: **Rwy 2**, multiple trees beginning 888' from departure end of runway, 412' right of centerline, up to 47' AGL/980' MSL. Tree and towers beginning 2554' from departure end of runway, 46' left of centerline, up to 113' AGL/1046' MSL. **Rwy 14**, tree 2061' from departure end of runway, 1004' right of centerline, 69' AGL/1005' MSL. **Rwy 20**, tree 1463' from departure end of runway, 564' left of centerline, 82' AGL/1019' MSL. Multiple trees beginning 1119' from departure end of runway, 171' right of centerline, up to 62' AGL/999' MSL. **Rwy 32**, multiple bushes beginning 86' from departure end of runway, 447' left of centerline, up to 12' AGL/940' MSL.

NAPOLEON, OH

HENRY COUNTY (7W5)

ORIG 10322 (FAA)

NOTE: **Rwy 10**, trees 1128' from DER, 774' left of centerline, 100' AGL/784' MSL. Trees 1910' from DER, 419' right of centerline, 100' AGL/784' MSL. **Rwy 28**, vehicle on road 270' from DER, on centerline, 15' AGL/699' MSL. Trees 575' from DER, 427' right of centerline, 100' AGL/784' MSL. Trees 2140' from DER, 389' left of centerline, 100' AGL/789' MSL. Trees 3167' from DER, 390' right of centerline, 100' AGL/784' MSL.

NAPPANEE, IN

NAPPANEE MUNI (C03)

AMDT 1 81036 (FAA)

TAKE-OFF MINIMUMS: **Rwy 9**, 300-1.

NEW LEXINGTON, OH

PERRY COUNTY (I86)

ORIG 84243 (FAA)

TAKE-OFF MINIMUMS: **Rwys 8, 26**, 300-1.

31 MAY 2012 to 28 JUN 2012

31 MAY 2012 to 28 JUN 2012

12152

TAKE-OFF MINIMUMS AND (OBSTACLE) DEPARTURE PROCEDURES

TAKE-OFF MINIMUMS AND (OBSTACLE) DEPARTURE PROCEDURES

12152

NEW PHILADELPHIA, OH

HARRY CLEVER FIELD (PHD)
AMDT 3 11293 (FAA)

TAKE-OFF MINIMUMS: **Rwys 11, 29**, NA - Environmental.

Rwy 14, 500-2½ or std. w/min. climb to 420' per NM to 1500. **Rwy 32**, std. w/min. climb of 210' per NM to 1500.

DEPARTURE PROCEDURE: **Rwy 14**, climb heading 147° to 1500 before turning. **Rwy 32**, climb heading 327° to 1600 before turning.

NOTE: **Rwy 14**, poles beginning 194' from DER, 431' left of centerline, up to 56' AGL/935' MSL. Vehicle on road beginning 240' from DER, 146' left of centerline, up to 15' AGL/902' MSL. Rising terrain and trees beginning 320' from DER, 37' left of centerline, up to 100' AGL/1319' MSL. Siren 383' from DER, 584' left of centerline, 81' AGL/940' MSL. Tower 3659' from DER, 9' left of centerline, 124' AGL/983' MSL. Vehicle on road beginning 78' from DER, 45' right of centerline, up to 15' AGL/904' MSL. Trees beginning 79' from DER, 13' right of centerline, up to 100' AGL/972' MSL. Poles beginning 678' from DER, 3' right of centerline, up to 61' AGL/920' MSL. **Rwy 32**, trees beginning 41' from DER, 64' left of centerline, up to 100' AGL/965' MSL. Vehicle on road beginning 108' from DER, 26' left of centerline, up to 15' AGL/914' MSL. Headstone 142' from DER, 272' left of centerline, 6' AGL/900' MSL. Building 167' from DER, 511' left of centerline, 34' AGL/928' MSL. OL on pole 261' from DER, 213' left of centerline, 37' AGL/931' MSL. Vehicle on road beginning 12' from DER, 28' right of centerline, up to 15' AGL/914' MSL. Rising terrain and trees beginning 36' from DER, 22' right of centerline, up to 100' AGL/984' MSL. Fence 83' from DER, 217' right of centerline, 6' AGL/900' MSL. Poles beginning 502' from DER, 368' right of centerline, up to 28' AGL/924' MSL. Tower 2.6 NM from DER, 2107' right of centerline, 406' AGL/1319' MSL.

NEWARK, OH

NEWARK-HEATH (VTA)
AMDT 2 08213 (FAA)

TAKE-OFF MINIMUMS: **Rwy 9**, 600-3 or std. w/min. climb of 354' per NM to 1800.

DEPARTURE PROCEDURE: **Rwy 9**, climb heading 093° to 1800 before proceeding on course.

NOTE: **Rwy 9**, Vehicle road 306' from departure end of runway, 164' right of centerline, 15' AGL/894' MSL. Trees beginning 2.2 NM from departure end of runway, 1906' right of centerline, 100' AGL/1159' MSL.

NEW CASTLE, IN

NEW CASTLE-HENRY CO MUNI (UJWL)
ORIG 12068 (FAA)

NOTE: **Rwy 9**, vehicle on road 80' from DER, left and right of centerline, 15' AGL/1103' MSL. Trees beginning 2089' from DER, left and right of centerline, up to 97' AGL/1186' MSL. **Rwy 27**, vehicle on road 197' from DER, left and right of centerline, 15' AGL/1088' MSL. Building 751' from DER, 35' left of centerline, 29' AGL/1098' MSL. Trees beginning 371' from DER, 487' left of centerline, up to 57' AGL/1136' MSL.

NORTH VERNON, IN

NORTH VERNON (OVO)
ORIG 09239 (FAA)

NOTE: **Rwy 5**, tree 1866' from DER, 690' left of centerline, 62' AGL/821' MSL. Tree 428' from DER, 516' right of centerline, 22' AGL/781' MSL. **Rwy 15**, fence beginning 259' from DER, crossing left to right, 11' AGL/765' MSL. Trees beginning 469' from DER, 100' left of centerline, up to 115' AGL/864' MSL. Tree 1509' from DER, 472' right of centerline, 59' AGL/818' MSL. **Rwy 23**, trees beginning 1856' from DER, 94' left of centerline, up to 93' AGL/842' MSL. Tree 3348' from DER 675' right of centerline, 97' AGL/846' MSL. **Rwy 33**, fence beginning 304' from DER, 138' left of centerline, 11' AGL/761' MSL. Tree 2592' from DER, 596' left of centerline, 90' AGL/839' MSL. Power pole 751' from DER, 102' right of centerline, 25' AGL/774' MSL.

NORWALK, OH

NORWALK-HURON COUNTY (5A1)
AMDT 1 83286 (FAA)

TAKE-OFF MINIMUMS: **Rwys 10, 28**, 300-1.

OTTAWA, OH

PUTNAM COUNTY (OWX)
ORIG 09239 (FAA)

NOTE: **Rwy 9**, trees 1342' from DER, 578' right of centerline, 100' AGL/854' MSL. Tree 1978' from DER, 5' left of centerline, 50' AGL/814' MSL. **Rwy 27**, road 1' from DER, 219' right of centerline, 15' AGL/768' MSL. Multiple trees and pole beginning 1606' from DER, 303' left of centerline, up to 100' AGL/854' MSL.

OXFORD, OH

MIAMI UNIVERSITY (OXD)
AMDT 2 12152 (FAA)

NOTE: **Rwy 5**, trees beginning 314' from DER, left and right of centerline, up to 100' AGL/1129' MSL. Vehicles on roadway beginning 320' from DER, 282' right of centerline, up to 15' AGL/1044' MSL. Poles beginning 695' from DER, 209' left of centerline, up to 35' AGL/1061' MSL. Rod on building 764' from DER, 501' left of centerline, 33' AGL/1060' MSL. Light poles beginning 966' from DER, 518' right of centerline, up to 70' AGL/1084' MSL. **Rwy 23**, vehicles on roadway beginning 136' from DER, left and right of centerline, up to 15' AGL/1054' MSL. Poles beginning 139' from DER, 178' left of centerline, up to 33' AGL/1072' MSL. Trees beginning 256' from DER, left and right of centerline, up to 100' AGL/1149' MSL. Buildings beginning 269' from DER, left and right of centerline, up to 33' AGL/1068' MSL. Chimney 327' from DER, 432' left of centerline, 34' AGL/1070' MSL. Antenna 1076' from DER, 243' left of centerline, 43' AGL/1073' MSL.

31 MAY 2012 to 28 JUN 2012

31 MAY 2012 to 28 JUN 2012

12152

TAKE-OFF MINIMUMS AND (OBSTACLE) DEPARTURE PROCEDURES

TAKE-OFF MINIMUMS AND (OBSTACLE) DEPARTURE PROCEDURES

12152

PAINESVILLE, OH

CONCORD AIRPARK (2G1)
AMDT 3 10322 (FAA)

TAKE-OFF MINIMUMS: **Rwy 20**, 400-2¾ or std. w/a min. climb of 400' per NM to 1500.

DEPARTURE PROCEDURE: **Rwy 20**, climb heading 209° to 1500 before proceeding on course.

NOTE: **Rwy 2**, trees beginning 336' from DER, 42' left of centerline, up to 100' AGL/1039' MSL. Trees beginning 1064' from DER, 217' right of centerline, up to 100' AGL/1039' MSL. **Rwy 20**, trees beginning 131' from DER, left and right of centerline, up to 100' AGL/1220' MSL. Tower 1.2 NM from DER, 2020' right of centerline, 114' AGL/1223' MSL.

PERU, IN

PERU MUNI (I76)
AMDT 3 07018 (FAA)

NOTE: **Rwy 1**, multiple trees beginning 2201' from departure end of runway, 321' left of centerline, 100' AGL/879' MSL. Road plus vehicle beginning 407' from departure end of runway, 1524' right of centerline, 15' AGL/794' MSL. Trees beginning 1656' from departure end of runway, 815' right of centerline, 100' AGL/879' MSL. **Rwy 19**, multiple trees beginning 44' from departure end of runway, 204' left of centerline, 100' AGL/869' MSL. Multiple trees beginning 588' from departure end of runway, 134' right of centerline, 100' AGL/859' MSL.

PHILLIPSBURG, OH

PHILLIPSBURG (317)
TAKE-OFF MINIMUMS: **Rwy 21**, 300-1.

PIQUA, OH

PIQUA AIRPORT-HARTZELL FIELD (I17)
ORIG 11293 (FAA)

NOTE: **Rwy 8**, tree 2006' from DER, 515' left of centerline, 76' AGL/1062' MSL. **Rwy 26**, vehicles on roadway, beginning 347' from DER, 578' left of centerline, up to 15' AGL/1024' MSL. Trees and grain bin beginning 61' from DER, 321' left of centerline, up to 100' AGL/1119' MSL.

PLYMOUTH, IN

PLYMOUTH MUNI (C65)
ORIG 74199 (FAA)
TAKE-OFF MINIMUMS: **Rwys 10, 28**, 300-1.

PORT CLINTON, OH

CARL R. KELLER FIELD (PCW)
AMDT 6 09183 (FAA)

TAKE-OFF MINIMUMS: **Rwy 27**, std. w/min. climb of 250' per NM to 1600 or 1000-2¾ for climb in visual conditions.

DEPARTURE PROCEDURE: **Rwy 27**, for climb in visual conditions: cross Carl R Keller Field at or above 1400 MSL before proceeding on course.

NOTE: **Rwy 9**, multiple trees and poles beginning 417' from DER, 398' left of centerline, up to 78' AGL/668' MSL. Multiple trees and poles beginning 407' from DER, 550' right of centerline, up to 67' AGL/657' MSL. **Rwy 18**, multiple trees beginning 626' from DER, 424' left of centerline, up to 100' AGL/684' MSL. Trees 511' from DER, 471' right of centerline, 100' AGL/684' MSL. Vehicles on road 475' from DER, 31' right of centerline, 15' AGL/604' MSL. **Rwy 27**, multiple trees beginning 1210' from DER, 176' left of centerline, up to 65' AGL/650' MSL. Pole 1066' from DER, 609' right of centerline, 35' AGL/620' MSL. Multiple trees beginning 2558' from DER, 311' right of centerline, up to 91' AGL/676' MSL. **Rwy 36**, trees 558' from DER, 406' left of centerline, 100' AGL/684' MSL. Trees 770' from DER, 564' right of centerline, 100' AGL/679' MSL. Trees 5097' from DER, 1661' right of centerline, 100' AGL/719' MSL.

PORTLAND, IN

PORTLAND MUNI (PLD)
ORIG 08213 (FAA)

TAKE-OFF MINIMUMS: **Rwys 18, 36**, NA - Turf runways.

NOTE: **Rwy 9**, multiple trees beginning 2290' from departure end of runway, 517' right of centerline, up to 100' AGL/1029' MSL. Multiple trees beginning 2843' from departure end of runway, 36' left of centerline, up to 100' AGL/1029' MSL. **Rwy 27**, barn 1082' from departure end of runway, 572' right of centerline, 34' AGL/945' MSL. Multiple trees beginning 263' from departure end of runway, 551' left of centerline, up to 100' AGL/1019' MSL.

PORTSMOUTH, OH

GREATER PORTSMOUTH RGNL (PMH)
AMDT 3 12152 (FAA)

TAKE-OFF MINIMUMS: **Rwy 18**, 300-1¾ or std. w/min. climb of 257' per NM to 1100.

DEPARTURE PROCEDURE: **Rwy 18**, climb heading 170° to 1300 before proceeding on course.

NOTE: **Rwy 18**, trees beginning 4' from DER, 290' left of centerline, up to 100' AGL/721' MSL. Trees beginning 678' from DER, 495' right of centerline, up to 100' AGL/931' MSL. **Rwy 36**, trees beginning 1' from DER, 180' left of centerline, up to 100' AGL/780' MSL. Trees beginning 687' from DER, 388' right of centerline, up to 100' AGL/710' MSL.

31 MAY 2012 to 28 JUN 2012

31 MAY 2012 to 28 JUN 2012

12152

TAKE-OFF MINIMUMS AND (OBSTACLE) DEPARTURE PROCEDURES

TAKE-OFF MINIMUMS AND (OBSTACLE) DEPARTURE PROCEDURES

12152

RAVENNA, OH

PORTAGE COUNTY (POV)
ORIG 10322 (FAA)

NOTE: **Rwy 9**, power poles and road 19' from DER, 368' left of centerline, up to 35' AGL/1238' MSL. Power pole 413' from DER, 549' right of centerline, 35' AGL/1218' MSL. **Rwy 27**, tree 751' from DER, 148' right of centerline, 56' AGL/1226' MSL. Pole 105' from DER, 523' right of centerline, 35' AGL/1200' MSL. Power poles 357' from DER, 408' left of centerline, up to 35' AGL/1244' MSL.

RENSELAER, IN

JASPER COUNTY (RZL)
AMDT 1 88014 (FAA)

TAKE-OFF MINIMUMS: **Rwys 9, 18, 27, 36**, 300-1.
DEPARTURE PROCEDURE: **Rwys 9, 18, 27, 36**, climb to 1100 on runway heading before proceeding on course.

RICHMOND, IN

RICHMOND MUNI (RID)
ORIG 09183 (FAA)

TAKE-OFF MINIMUMS: **Rwys 10, 28**, NA-Environmental.

NOTE: **Rwy 15**, tree 2970' from DER, 198' right of centerline, 86' AGL/1226' MSL. **Rwy 24**, road and antenna beginning 298' from DER, 7' right of centerline, up to 22' AGL/1156' MSL. Trees beginning 1185' from DER, 529' left of centerline, up to 40' AGL/1174' MSL. Obstruction light on localizer 300' from DER, on centerline, 8' AGL/1142' MSL. **Rwy 33**, trees beginning 515' from DER, 283' right of centerline, up to 48' AGL/1175' MSL. Antenna and trees beginning 1041' from DER, 141' left of centerline, up to 71' AGL/1198' MSL.

ROCHESTER, IN

FULTON COUNTY (RCR)
ORIG 08269 (FAA)

NOTE: **Rwy 11**, terrain 469' right of centerline, 797' MSL. Trees beginning 619' from departure end of runway, 181' right of centerline, up to 105' AGL/894' MSL. Trees beginning 2534' from departure end of runway, 27' left of centerline, up to 97' AGL/886' MSL. **Rwy 29**, pole 1' from departure end of runway, 480' left of centerline, 28' AGL/817' MSL. Pole 195' from departure end of runway, 460' left of centerline, 28' AGL/817' MSL. Pole 524' from departure end of runway, 503' left of centerline, 33' AGL/823' MSL. Vehicle on road 578' from departure end of runway, 100' left of centerline, 15' AGL/804' MSL. Vent on building 890' from departure end of runway, 262' left of centerline, 23' AGL/812' MSL. Trees beginning 614' from departure end of runway, 355' left of centerline, up to 87' AGL/876' MSL. Vent on building 229' from departure end of runway, 525' right of centerline, 40' AGL/829' MSL. Pole 843' from departure end of runway, 94' right of centerline, 23' AGL/812' MSL. Trees beginning 883' from departure end of runway, 152' right of centerline, up to 103' AGL/892' MSL.

ST. CLAIRSVILLE, OH

ALDERMAN (2P7)
AMDT 3 10350 (FAA)

TAKE-OFF MINIMUMS: **Rwy 1**, 300-1¼ or std. w/min. climb of 395' per NM to 1800. **Rwy 19**, 500-3 or std. w/min. climb of 244' per NM to 1800.

DEPARTURE PROCEDURE: **Rwy 1**, Climb heading 013° to 1800 before turning right. **Rwy 19**, Climb heading 193° to 1800 before proceeding on course.
NOTE: **Rwy 1**, trees 49' from DER, 170' left of centerline, up to 90' AGL/1269' MSL. Trees 179' from DER, 53' left of centerline, up to 90' AGL/1249' MSL. Trees 210' from DER, 37' right of centerline, up to 90' AGL/1249' MSL. **Rwy 19**, trees 141' from DER, 138' left of centerline, up to 90' AGL/1229' MSL. Trees 154' from DER, 168' right of centerline. Up to 90' AGL/1249' MSL. Trees 385' from DER, 34' right of centerline, up to 90' AGL/1229' MSL. Trees 1764' from DER, 958' right of centerline, up to 90' AGL/1309' MSL.

SALEM, OH

SALEM AIRPARK, INC (38D)
AMDT 1 97058 (FAA)

DEPARTURE PROCEDURE: **Rwys 10, 28**, climb runway heading to 2200 before turning south.

SANDUSKY, OH

GRIFFING-SANDUSKY (SKY)
AMDT 2 11069 (FAA)

TAKE-OFF MINIMUMS: **Rwy 18**, 400-2¼ or std. w/min. climb of 220' per NM to 1000.

NOTE: **Rwy 9**, brush at DER, right to left of centerline, up to 6' AGL/583' MSL. Terrain 86' from DER, 428' right of centerline, 583' MSL. Trees beginning 425' from DER, 160' right of centerline, up to 100' AGL/679' MSL. **Rwy 18**, terrain rising 15' from DER on centerline, up to 588' MSL. Vehicle on road 54' from DER 185' right of centerline, 17' AGL/601' MSL. Train 127' from DER, 203' right of centerline, 23' AGL/607' MSL. Trees beginning 336' from DER, right and left of centerline, up to 100' AGL/704' MSL. **Rwy 27**, trees beginning 18' from DER, 67' right of centerline, up to 100' AGL/684' MSL. Terrain 22' from DER, 442' left of centerline, 581' MSL. Vehicle on road 75' from DER, 217' left of centerline, 17' AGL/591' MSL. Train 110' from DER, 287' left of centerline, 23' AGL/597' MSL.

SEBRING, OH

TRI-CITY (3G6)
ORIG 76036 (FAA)

DEPARTURE PROCEDURE: **Rwys 17, 35**, climb runway heading to 3000 before turning east.

31 MAY 2012 to 28 JUN 2012

31 MAY 2012 to 28 JUN 2012

12152

TAKE-OFF MINIMUMS AND (OBSTACLE) DEPARTURE PROCEDURES

TAKE-OFF MINIMUMS AND (OBSTACLE) DEPARTURE PROCEDURES

12152

SEYMOUR, IN

FREEMAN MUNI (SER)

ORIG 07130 (FAA)

DEPARTURE PROCEDURE: **Rwy 5**, climb heading 046° to 1100 before turning left. **Rwy 14**, climb heading 136° to 1100 before turning right.

NOTE: **Rwy 5**, multiple trees beginning 845' from departure end of runway, 523' left of centerline, up to 90' AGL/669' MSL. Multiple towers beginning 2870' from departure end of runway, 1231' left of centerline, up to 73' AGL/657' MSL. Multiple trees beginning 1035' from departure end of runway, 691' right of centerline, up to 73' AGL/652' MSL. **Rwy 14**, multiple trees beginning 2285' from departure end of runway, 309' right of centerline, up to 78' AGL/657' MSL. **Rwy 32**, multiple trees beginning 2339' from departure end of runway, 383' left of centerline, up to 63' AGL/662' MSL.

SHELBY, OH

SHELBY COMMUNITY (12G)

AMDT 2 12096 (FAA)

NOTE: **Rwy 18**, trees beginning 9' from DER, 171' left of centerline, up to 100' AGL/1219' MSL. Vehicles beginning 24' from DER, 303' left of centerline, up to 15' AGL/1134' MSL. Trees beginning 338' from DER, 447' right of centerline, up to 100' AGL/1229' MSL. Transmission line beginning 2127' from DER, 170' left and right of centerline, up to 91' AGL/1200' MSL. **Rwy 36**, vehicles beginning 30' from DER, left and right of centerline, up to 17' AGL/1136' MSL. Buildings beginning 63' from DER, left and right of centerline, up to 53' AGL/1172' MSL. Trees beginning 561' from DER, 85' left of centerline, up to 100' AGL/1209' MSL. Grain silos beginning 1799' from DER, 225' right of centerline, up to 100' AGL/1229' MSL.

SHELBYVILLE, IN

SHELBYVILLE MUNI (GEZ)

AMDT 5 11293 (FAA)

TAKE-OFF MINIMUMS: **Rwys 9, 27, N**-Environmental.

NOTE: **Rwy 1**, trees 1111' from DER, 753' right of centerline, 69' AGL/869' MSL. **Rwy 19**, trees 2180' from DER, 261' right of centerline, 100' AGL/899' MSL. Trees 2696' from DER, 498' left of centerline, 100' AGL/899' MSL.

SIDNEY, OH

SIDNEY MUNI (I12)

AMDT 2 91038 (FAA)

TAKE-OFF MINIMUMS: **Rwys 5, 10, 23**, 300-1. **Rwy 28**, 300-1 or std. with a min. climb of 350' per NM to 1300.

SOUTH BEND, IN

SOUTH BEND (SBN)

AMDT 9 09239 (FAA)

TAKE-OFF MINIMUMS: **Rwy 27R**, 300-1¼ or std. w/ min. climb of 240' per NM to 1100. Alternatively, with standard take-off minimums and a normal 200'/NM climb gradient, take-off must occur no later than 1800' prior to DER.

DEPARTURE PROCEDURE: **Rwy 9R**, climb heading 092° to 2000 before turning South. **Rwy 18**, climb heading 182° to 2000 before turning East.

NOTE: **Rwy 9L**, tree 1226' from DER, 367' left of centerline, 60' AGL/831' MSL. Tree 1332' from DER, 93' right of centerline, 50' AGL/822' MSL. Transmission tower 2159' from DER, 392' left of centerline, 117' AGL/872' MSL. **Rwy 18**, powerline and fence 199' from DER, left and right of centerline, up to 20' AGL/775' MSL. Multiple trees and poles beginning 684' from DER, from 829' left to 720' right of centerline, up to 80' AGL/849' MSL. **Rwy 27L**, light pole 665' from DER, 479' left of centerline, 22' AGL/810' MSL. Trees beginning 1190' from DER, from 948' left to 900' right of centerline, up to 100' AGL/923' MSL. **Rwy 27R**, tree 207' from DER, 502' right of centerline, 60' AGL/849' MSL. Tree 1541' from DER, 93' left of centerline, 60' AGL/850' MSL. Transmission tower 5542' from DER, 1922' right of centerline, 100' AGL/954' MSL. **Rwy 36**, terrain 98' from DER, 390' left of centerline, 803' MSL. Barricade 130' from DER, 418' left of centerline, 10' AGL/807' MSL. Trees beginning 340' from DER, 332' right of centerline, up to 36' AGL/815' MSL. Tree 2726' from DER, 443' left of centerline, 60' AGL/867' MSL.

SPRINGFIELD, OH

SPRINGFIELD-BECKLEY MUNI (SGH)

ORIG 08157 (FAA)

NOTE: **Rwy 6**, Trees beginning 642' from departure end of runway, 664' left of centerline, up to 96' AGL/1133' MSL. Tree 66' from departure end of runway, 514' right of centerline, 27' AGL/1064' MSL. **Rwy 15**, Multiple trees beginning 1357' from departure end of runway, 160' left of centerline, up to 86' AGL/1127' MSL. Tree 1763' from departure end of runway, 410' right of centerline, 51' AGL/1092' MSL. **Rwy 24**, Trees beginning 1387' from departure end of runway, 66' left of centerline, up to 58' AGL/1109' MSL. Windsock 1' from departure end of runway, 228' right of centerline, 20' AGL/1071' MSL. **Rwy 33**, Tree 183' from departure end of runway, 438' right of centerline, 24' AGL/1066' MSL.

STEUBENVILLE, OH

JEFFERSON COUNTY AIRPARK (2G2)

AMDT 1 11321 (FAA)

TAKE-OFF MINIMUMS: **Rwy 32**, 300-1¼ or std. w/ min. climb of 276' per NM to 1600.

DEPARTURE PROCEDURE: **Rwy 14**, climb heading 142° to 2100 before turning left.

NOTE: **Rwy 14**, trees beginning abeam DER, 251' left centerline, up to 30' AGL/1249' MSL. Trees beginning abeam DER, 381' right centerline, up to 30' AGL/1229' MSL. Trees beginning 235' from DER, left and right of centerline, up to 30' AGL/1209' MSL. **Rwy 32**, trees beginning abeam DER, 381' left of centerline, up to 30' AGL/1209' MSL. Vehicle on road beginning 765' from DER, 97' right of centerline, 15' AGL/1234' MSL. Tower 1.3 NM from DER, 823' left of centerline, 199' AGL/1411' MSL.

31 MAY 2012 to 28 JUN 2012

31 MAY 2012 to 28 JUN 2012

12152

TAKE-OFF MINIMUMS AND (OBSTACLE) DEPARTURE PROCEDURES

TAKE-OFF MINIMUMS AND (OBSTACLE) DEPARTURE PROCEDURES

12152

SULLIVAN, IN

SULLIVAN COUNTY (SIV)

AMDT 1 99364 (FAA)

TAKE-OFF MINIMUMS: **Rwys 18, 36**, 200-1 or std. with a min. climb of 320' per NM to 1800.

DEPARTURE PROCEDURE: **Rwy 18**, climb runway heading to 1500 before turning west on course.

Rwys 18, 36, climb runway heading to 1800 before turning east on course.

TELL CITY, IN

PERRY COUNTY MUNI (TEL)

AMDT 2 11237 (FAA)

NOTE: **Rwy 13**, fence, terrain, buildings, and trees beginning 6' from DER, 131' left of centerline, up to 49' AGL/740' MSL. Terrain, trees, and poles beginning 93' from DER, 19' right of centerline, up to 30' AGL/750' MSL. **Rwy 31**, trees, terrain, and pole beginning 125' from DER, 141' left of centerline, up to 25' AGL/702' MSL. Trees, terrain, and tower beginning 68' from DER, 64' right of centerline, up to 56' AGL/648' MSL.

TERRE HAUTE, IN

SKY KING (313)

AMDT 3 12068 (FAA)

TAKE-OFF MINIMUMS: **Rwys 18, 36**, NA - Environmental.

DEPARTURE PROCEDURE: **Rwy 26**, climb heading 262° to 1300 before turning left.

NOTE: **Rwy 8**, multiple power lines beginning 34' from DER, left and right of centerline, up to 30' AGL/529' MSL. Vehicle on road beginning 54' from DER, left and right of centerline, up to 15' AGL/519' MSL. Fence beginning 33' from DER, left and right of centerline, up to 6' AGL/505' MSL. Multiple buildings beginning 167' from DER, left and right of centerline, up to 20' AGL/519' MSL. Trees beginning 122' from DER, left and right of centerline, up to 60' AGL/589' MSL. **Rwy 26**, trees beginning abeam DER, 235' right of centerline, up to 60' AGL/559' MSL. Trees beginning abeam DER, 382' left of centerline, up to 60' AGL/539' MSL. Trees beginning 1057' from DER, 47' left of centerline, up to 60' AGL/539' MSL.

TERRE HAUTE, IN (CON'T)

TERRE HAUTE INTL-HULMAN FIELD (HUF)

ORIG 08213 (FAA)

NOTE: **Rwy 5**, Terrain beginning 118' from departure end of runway, left and right of centerline, 0' AGL/591' MSL.

Floodlight 967' from departure end of runway, 673' right of centerline, 32' AGL/621' MSL. Trees beginning 2019' from departure end of runway, 317' left of centerline, up to 100' AGL/689' MSL. Tree 3340' from departure end of runway, 533' right of centerline, 79' AGL/668' MSL.

Rwy 14, trees beginning 1266' from departure end of runway, 570' left of centerline, up to 100' AGL/689' MSL. Trees beginning 1,520' from departure end of runway 462' right of centerline, up to 100' AGL/689' MSL. Powerlines 3084' from departure end of runway, left and right of centerline, 98' AGL/682' MSL. **Rwy 18**, terrain beginning 84' from departure end of runway, left and right of centerline, 0' AGL/581' MSL. Trees beginning 3040' from departure end of runway, 192' left of centerline, up to 66' AGL/655' MSL. **Rwy 23**, trees beginning 412' from departure end of runway, 537' left of centerline, up to 34' AGL/593' MSL. Tree 1201' from departure end of runway, 376' right of centerline, 38' AGL/607' MSL. **Rwy 32**, trees and a pole beginning 397' from departure end of runway, 308' left of centerline, up to 82' AGL/651' MSL. Tree 1195' from departure end of runway 544' left of centerline, 68' AGL/637' MSL. Trees beginning 2597' from departure end of runway, 340' right of centerline, up to 100' AGL/669' MSL. **Rwy 36**, trees beginning 1580' from departure end of runway, 120' right of centerline, up to 100' AGL/669' MSL. trees beginning 2475' from departure end of runway, 153' left of centerline, up to 102' AGL/671' MSL.

TIFFIN, OH

SENECA COUNTY(16G)

AMDT 2 09183 (FAA)

NOTE: **Rwy 6**, multiple trees and buildings beginning 2' from DER, 186' right of centerline, up to 98' AGL/868' MSL. Antenna 129' from DER, 438' left of centerline, 66' AGL/836' MSL. Pole 408' from DER, 477' left of centerline, 39' AGL/809' MSL. Vehicle on road 501' from DER, 414' left of centerline, 26' AGL/796' MSL. Trees 2421' from DER, 207' left of centerline, 83' AGL/853' MSL. **Rwy 24**, multiple trees beginning 27' from DER, 280' left of centerline, up to 124' AGL/904' MSL. Building 1291' from DER, 528' left of centerline, 44' AGL/824' MSL. Multiple trees beginning 1071' from DER, 337' right of centerline, up to 92' AGL/872' MSL. Pole 1460' from DER, 562' right of centerline, 48' AGL/828' MSL.

TOLEDO, OH

TOLEDO EXECUTIVE (TDZ)

AMDT 2A 07326 (FAA)

TAKE-OFF MINIMUMS: **Rwys 14, 22, 32**, 300-1. **Rwy 4**, 2100-2 or std. with a min. climb of 300' per NM to 2100.

DEPARTURE PROCEDURE: **Rwys 14, 22, 32**, climb runway heading to 2000 before turning.

NOTE: **Rwy 14**, tree 789' from departure end of runway, 249' left of centerline, 61' AGL/685' MSL.

TOLEDO EXPRESS (TOL)

AMDT 2 89040 (FAA)

TAKE-OFF MINIMUMS: **Rwy 16**, 300-1 or std. with a min. climb of 260' per NM to 1000'.

DEPARTURE PROCEDURE: **Rwy 25**, climb runway heading to 1100' before turning.

31 MAY 2012 to 28 JUN 2012

31 MAY 2012 to 28 JUN 2012

12152

TAKE-OFF MINIMUMS AND (OBSTACLE) DEPARTURE PROCEDURES

TAKE-OFF MINIMUMS AND (OBSTACLE) DEPARTURE PROCEDURES

12152

UPPER SANDUSKY, OH

WYANDOT COUNTY (56D)
ORIG 80150 (FAA)
TAKE-OFF MINIMUMS: **Rwy 36**, 300-1.

URBANA, OH

GRIMES FIELD (I74)
AMDT 1 10266 (FAA)
NOTE: **Rwy 2**, numerous trees beginning 995' from DER, 6' left of centerline, up to 100' AGL/1152' MSL. Numerous trees beginning from 2106' from DER, 327' right of centerline, up to 100' AGL/1140' MSL. Numerous power poles 1204' from DER, 654' right of centerline, 55' AGL/1125' MSL. **Rwy 20**, numerous trees beginning 5' from DER, 487' left of centerline, up to 100' AGL/1111' MSL. Tank 5459' from DER, 1062' left of centerline, 170' AGL/1195' MSL. Numerous trees beginning 672' from DER, 92' right of centerline, up to 100' AGL/1120' MSL.

VALPARAISO, IN

PORTER COUNTY RGNL (VPZ)
ORIG 08045 (FAA)
NOTE: **Rwy 9**, Tree 51' from departure end of runway, 350' right of centerline, 100' AGL/874' MSL. Tree 1219' from departure end of runway, 775' left of centerline, 57' AGL/807' MSL. **Rwy 18**, Tower and multiple trees beginning 140' from departure end of runway, 157' right of centerline, up to 100' AGL/865' MSL. Trees 143' from departure end of runway, 71' left of centerline, 100' AGL/865' MSL. **Rwy 27**, Multiple trees, 1038' from departure end of runway, 308' left of centerline, up to 68' AGL/828' MSL. Sign, 1847' from departure end of runway, 263' right of centerline, 49' AGL/817' MSL. **Rwy 36**, Trees 105' from departure end of runway, 99' right of centerline, 100' AGL/895' MSL. Trees 108' from departure end of runway, 129' left of centerline, 100' AGL/874' MSL.

VAN WERT, OH

VAN WERT COUNTY (VNW)
AMDT 3 09015 (FAA)
TAKE-OFF MINIMUMS: **Rwy 9**, 300-1½ or std. w/ min. climb of 306' per NM to 1100. **Rwys 18, 36**, NA-Environmental.
NOTE: **Rwy 9**, tower 6084' from departure end of runway, 1963' left of centerline, 170' AGL/955' MSL.

VERSAILLES, OH

DARKE COUNTY (VES)
AMDT 2A 10154 (FAA)
NOTE: **Rwy 9**, trees 149' from DER, 353' left of centerline up to 50' AGL/1085' MSL. Tower 320' from DER, 326' left of centerline, 30' AGL/1033' MSL. Vehicle on road, 434' from DER, on centerline, 15' AGL/1019' MSL. **Rwy 27**, vehicle on road, 373' from DER, on centerline, 15' AGL/1019' MSL.

WADSWORTH, OH

WADSWORTH MUNI (3G3)
AMDT 1 08101 (FAA)
TAKE-OFF MINIMUMS: **Rwy 2**, std. w/ min. climb of 412' per NM to 1700, or 600-2½ with minimum climb of 289' per NM to 1900, or 1100-2½ for climb in visual conditions. **Rwy 10**, std. w/ min. climb of 585' per NM to 1800, or 700-3 with minimum climb of 340' per NM to 1800, or 1100-2½ for climb in visual conditions. **Rwy 20**, 300-1½ or std. w/ min. climb of 336' per NM to 1300. **Rwy 28**, 400-2½ or std. w/ min. climb of 457' per NM to 1500.

DEPARTURE PROCEDURE: **Rwy 2**, for climb in visual conditions: cross Wadsworth Muni airport at or above 1900 MSL before proceeding on course. **Rwy 10**, for climb in visual conditions: cross Wadsworth Muni airport at or above 1900 MSL before proceeding on course. **Rwy 28**, climb heading 277° to 1600 before proceeding on course.

NOTE: **Rwy 2**, vehicle on road 23' from departure end of runway, 404' right of centerline, 15' AGL/994' MSL. Powerline 1425' from departure end of runway, left and right of centerline, 40' AGL/1029' MSL. Trees beginning 2947' from departure end of runway, 80' left of centerline, up to 100' AGL/1129' MSL. Trees beginning 4490' from departure end of runway, 119' right of centerline, up to 100' AGL/1249' MSL. **Rwy 10**, trees beginning 2813' from departure end of runway, 245' right of centerline, up to 100' AGL/1289' MSL. Trees beginning 1659' from departure end of runway, 56' left of centerline, up to 100' AGL/1319' MSL. **Rwy 20**, vehicle on road 289' from departure end of runway, left and right of centerline, 15' AGL/994' MSL. Trees beginning 389' from departure end of runway, 194' left of centerline, up to 100' AGL/1079' MSL. Trees beginning 1921' from departure end of runway, 605' right of centerline, up to 100' AGL/1099' MSL. **Rwy 28**, building 249' from departure end of runway, 530' right of centerline, 24' AGL/989' MSL. Trees beginning 169' from departure end of runway, 198' left of centerline, up to 100' AGL/1079' MSL. Trees beginning 3698' from departure end of runway, 9' right of centerline, up to 100' AGL/1299' MSL.

WAPAKONETA, OH

NEIL ARMSTRONG (AXV)
AMDT 2 08213 (FAA)
NOTE: **Rwy 8**, vehicle on road, 1' from DER, 403' right of centerline, 15' AGL/926' MSL. Fence 70' from DER, 222' right of centerline, 6' AGL/919' MSL. Fence 149' from DER, 270' left of centerline, 8' AGL/921' MSL. Obstruction light on pole, 348' from DER, 239' left of centerline, 15' AGL/928' MSL. Building, 614' from DER, 463' left of centerline, 15' AGL/929' MSL. Trees beginning 2385' from DER, 51' left of centerline, up to 101' AGL/1014' MSL. Trees beginning 2263' from DER, 268' right of centerline, up to 75' AGL/988' MSL. **Rwy 26**, obstruction light on DME, 401' from DER, 268' right of centerline, 9' AGL/922' MSL. Trees beginning 496' from DER, 51' right of centerline, up to 83' AGL/996' MSL. Trees beginning 563' from DER, 120' left of centerline, up to 72' AGL/985' MSL. Pole 620' from DER, 332' left of centerline, 25' AGL/938' MSL. Stack, 3021' from DER, 577' left of centerline, 125' AGL/1035' MSL. Tower, 3265' from DER, 729' right of centerline, 149' AGL/1050' MSL.

31 MAY 2012 to 28 JUN 2012

31 MAY 2012 to 28 JUN 2012

12152

TAKE-OFF MINIMUMS AND (OBSTACLE) DEPARTURE PROCEDURES

TAKE-OFF MINIMUMS AND (OBSTACLE) DEPARTURE PROCEDURES

12152

WARSAW, IN

WARSAW MUNI (ASW)

AMDT 2 10266 (FAA)

TAKE-OFF MINIMUMS: **Rwy 9**, 300-1¼ or std. w/min. climb of 242' per NM to 1100, or alternatively, with standard takeoff minimums and a normal 200' per NM climb gradient, takeoff must occur no later than 2000' prior to DER.

NOTE: **Rwy 9**, multiple trees beginning 1369' from DER, 176' left of centerline, up to 68' AGL/908' MSL. Vehicles on road, 185' from DER, 264' left of centerline, 15' AGL/866' MSL. Obstruction light on tower, 5640' from DER, 105' left of centerline, 171' AGL/1020' MSL. Vehicles on road, 182' from DER, 22' right of centerline, 15' AGL/865' MSL. **Rwy 18**, tree 1276' from DER, 298' right of centerline, 65' AGL/905' MSL. **Rwy 27**, tree 1127' from DER, 521' right of centerline, 37' AGL/877' MSL. **Rwy 36**, vehicles on road 505' from DER, on centerline, 15' AGL/864' MSL. Trees beginning 1768' from DER, 32' left of centerline, up to 100' AGL/929' MSL. Tree 1666' from DER, 569' right of centerline, 100' AGL/929' MSL.

WASHINGTON, IN

DAVISS COUNTY (DCY)

ORIG 84045 (FAA)

TAKE-OFF MINIMUMS: **Rwy 18**, 300-1.

WASHINGTON COURT HOUSE, OH

WASHINGTON COUNTY (I23)

AMDT 2 07354 (FAA)

TAKE-OFF MINIMUMS: **Rwy 5**, 300-1¼ or std. w/min. climb of 268' per NM to 1400.

NOTE: **Rwy 5**, train on railroad tracks 384' from departure end of runway, 243' right of centerline, 23' AGL/997' MSL. Terrain 81' from departure end of runway, 184' left of centerline, 0' AGL/978' MSL. Silo 8848' from departure end of runway, 772' right of centerline, 238' AGL/1213' MSL. **Rwy 23**, train on railroad tracks 509' from departure end of runway, 257' left of centerline, 23' AGL/1003' MSL.

WAUSEON, OH

FULTON COUNTY (USE)

AMDT 1 83048 (FAA)

TAKE-OFF MINIMUMS: **Rwys 9, 27**, 300-1.

WAVERLY, OH

PIKE COUNTY (EOP)

ORIG-A 07270 (FAA)

TAKE-OFF MINIMUMS: **Rwy 25**, 300-1.

NOTE: **Rwy 7**, building 507' from departure end of runway, 439' right of centerline, 30' AGL/688' MSL. **Rwy 25**, 60' AGL trees 500' from departure end of runway 170' left of centerline.

WEST UNION, OH

ALEXANDER SALAMON (AMT)

AMDT 1 90347 (FAA)

TAKE-OFF MINIMUMS: **Rwys 5, 23**, 300-1.

DEPARTURE PROCEDURE: **Rwys 5, 23**, climb straight ahead to 1700 before turning west.

WILLARD, OH

WILLARD (8G1)

AMDT 1 81134 (FAA)

TAKE-OFF MINIMUMS: **Rwys 10, 28**, 300-1.
DEPARTURE PROCEDURE: **Rwys 10, 28**, climb runway heading to 1500 before proceeding on course.

WILLOUGHBY, OH

WILLOUGHBY LOST NATION MUNI (LNN)

AMDT 3 10322 (FAA)

DEPARTURE PROCEDURE: **Rwy 10**, climb heading 099° to 1600 before turning right. **Rwy 23**, climb heading 233° to 1400 before turning right. **Rwy 28**, climb heading 279° to 1400 before turning left.

NOTE: **Rwy 5**, trees beginning 47' from DER, 93' right of centerline, up to 109' AGL/726' MSL. Fence 530' from DER, 244' right of centerline, 16' AGL/633' MSL. Trees beginning 1079' from DER, 150' left of centerline, up to 120' AGL/737' MSL. Pole 2129' from DER, 428' right of centerline, 56' AGL/677' MSL. **Rwy 10**, trees and poles beginning 602' from DER, 63' right of centerline, up to 109' AGL/730' MSL. Trees and poles beginning 608' from DER, 67' left of centerline, up to 117' AGL/731' MSL. **Rwy 23**, light on hangar 201' from DER, 534' right of centerline, 32' AGL/672' MSL. Trees, poles and buildings beginning 294' from DER, 87' right of centerline, up to 85' AGL/722' MSL. Trees beginning 1660' from DER, 164' left of centerline, up to 77' AGL/714' MSL. **Rwy 28**, light on hangar 877' from DER, 539' left of centerline, 32' AGL/672' MSL. Building 881' from DER, 665' left of centerline, 32' AGL/672' MSL. Pole 988' from DER, 533' right of centerline, 31' AGL/661' MSL. Building 1101' from DER, 337' right of centerline, 35' AGL/661' MSL. Trees beginning 1177' from DER, 395' right of centerline, up to 75' AGL/705' MSL. Trees beginning 1179' from DER, 200' left of centerline, up to 80' AGL/717' MSL.

WILMINGTON, OH

WILMINGTON AIR PARK (ILN)

ORIG 09239 (FAA)

NOTE: **Rwy 4L**, tree 1032' from DER, 644' right of centerline, 35' AGL/1114' MSL. **Rwy 22L**, tree 2437' from DER, 468' left of centerline, 100' AGL/1134' MSL.

CLINTON FIELD (I66)

AMDT 2 07186 (FAA)

TAKE-OFF MINIMUMS: **Rwy 3**, 300-1¼ or std. w/a min. climb of 224' per NM to 1300', or alternatively, w/std. takeoff minimums and a normal 200'/NM climb gradient, takeoff must occur no later than 1700' prior to departure end of runway.

NOTE: **Rwy 3**, multiple trees beginning 76' from departure end of runway, 76' right of centerline, up to 88' AGL/1137' MSL. Multiple trees beginning 279' from departure end of runway, 140' left of centerline, up to 96' AGL/1105' MSL. Water tank 1 NM from departure end of runway, 554' left of centerline, 176' AGL/1205' MSL. **Rwy 21**, multiple trees beginning 187' from departure end of runway, 509' right of centerline, up to 87' AGL/1111' MSL. Multiple trees beginning 243' from departure end of runway, 214' left of centerline, up to 77' AGL/1086' MSL.

31 MAY 2012 to 28 JUN 2012

31 MAY 2012 to 28 JUN 2012

12152

TAKE-OFF MINIMUMS AND (OBSTACLE) DEPARTURE PROCEDURES

TAKE-OFF MINIMUMS AND (OBSTACLE) DEPARTURE PROCEDURES

12152

WINAMAC, IN

ARENS FIELD (RWN)
ORIG 11293 (FAA)

TAKE-OFF MINIMUMS: **Rwy 9**, 300-1½ or std. w/min. climb of 225' per NM to 1000, or alternatively, with standard takeoff minimums and a normal 200' per NM climb gradient, takeoff must occur no later than 1700' prior to DER

NOTE: **Rwy 9**, hangar 6' from DER, 409' left of centerline, 25' AGL/731' MSL. Tower 1.1 NM from DER, 117' left of centerline, 182' AGL/895' MSL.

WINCHESTER, IN

RANDOLPH COUNTY (I22)
ORIG 11069 (FAA)

NOTE: **Rwy 8**, powerpoles beginning 503' from DER, 433' right of centerline, up to 26' AGL/1155' MSL. Trees 1013' from DER, 586' right of centerline, 38' AGL/1167' MSL. Trees beginning 3523' from DER, 112' right of centerline, up to 101' AGL/1220' MSL. Tree 1745' from DER, 718' left of centerline, 61' AGL/1180' MSL. **Rwy 26**, trees and powerpole beginning 389' from DER, 461' right of centerline, up to 59' AGL/1178' MSL. Barn and silo beginning 590' from DER, 360' right of centerline, up to 32' AGL/1151' MSL. Tree 479' from DER, 571' left of centerline, 23' AGL/1142' MSL. Powerpoles, antenna, and barn beginning 913' from DER, 444' left of centerline, up to 34' AGL/1153' MSL. Tree and antenna beginning 1023' from DER, 424' left of centerline, up to 43' AGL/1162' MSL.

WOODSFIELD, OH

MONROE COUNTY (4G5)
AMDT 2 91150 (FAA)

TAKE-OFF MINIMUMS: **Rwy 25**, 300-1.

WOOSTER, OH

WAYNE COUNTY (BJJ)
AMDT 1 98169 (FAA)

TAKE-OFF MINIMUMS: **Rwy 28**, 300-1.

WRIGHT-PATTERSON AFB (KFFO)

DAYTON, OH 09295

Rwy 5R, 200-1½*
Rwy 23R, 400-2½**
Rwy 23L, 400-2½***

* Or standard with minimum climb of 240ft/NM to 1100'.

** Or standard with minimum climb of 260ft/NM to 1300'.

*** Or standard with minimum climb of 210ft/NM to 1300'.

Rwy 5R, Climb on track 050° until reaching 1100'. TAKE-OFF OBSTACLES: **Rwy 23L**: 43' AGL VORTAC, 850' from DER, 662' right of centerline.

Rwy 5L: Up to 105' AGL tree line beginning 3000' from DER, 700' right of centerline to 5100' from DER, 1300' left of centerline.

YOUNGSTOWN, OH

YOUNGSTOWN ELSER METRO (4G4)
AMDT 1 10182 (FAA)

TAKE-OFF MINIMUMS: **Rwy 10**, 300-1¼ or std. w/ min. climb of 237' per NM to 1500. **Rwy 28**, 300-1 or std. w/ a min. climb of 463' per NM to 1300.

DEPARTURE PROCEDURE: **Rwy 10**, climb heading 098° to 2000 before proceeding on course. **Rwy 28**, climb heading 278° to 1700 before turning right.

NOTE: **Rwy 10**, vehicle on road 200' from DER, on centerline, 15' AGL/1104' MSL. Hangar and trees beginning 34' from DER, 203' right of centerline, up to 100' AGL/1189' MSL. Trees and tower beginning 283' from DER, 322' left of centerline, up to 138' AGL/1332' MSL. **Rwy 28**, trees on centerline, beginning 3380' from DER, up to 100' AGL/1209' MSL. Trees beginning at DER, 222' right of centerline, up to 100' AGL/1119' MSL. Trees beginning at DER, 191' left of centerline, up to 100' AGL/1119' MSL.

YOUNGSTOWN-WARREN, OH

YOUNGSTOWN-WARREN RGNL (YNG)
AMDT 4 90207 (FAA)

TAKE-OFF MINIMUMS: **Rwy 23**, 300-1.

ZANESVILLE, OH

ZANESVILLE MUNI (ZZV)
ORIG 03359 (FAA)

NOTE: **Rwy 22**, tree 303' from departure end of runway, 427' left of centerline, 948' MSL. Tree 182' from departure end of runway, 350' right of centerline, 942' MSL. **Rwy 34**, tree 2370' from departure end of runway, 189' left of centerline, 968' MSL. Tree 2309' from departure end of runway, 388' left of centerline, 962' MSL.

31 MAY 2012 to 28 JUN 2012

31 MAY 2012 to 28 JUN 2012

12152

TAKE-OFF MINIMUMS AND (OBSTACLE) DEPARTURE PROCEDURES