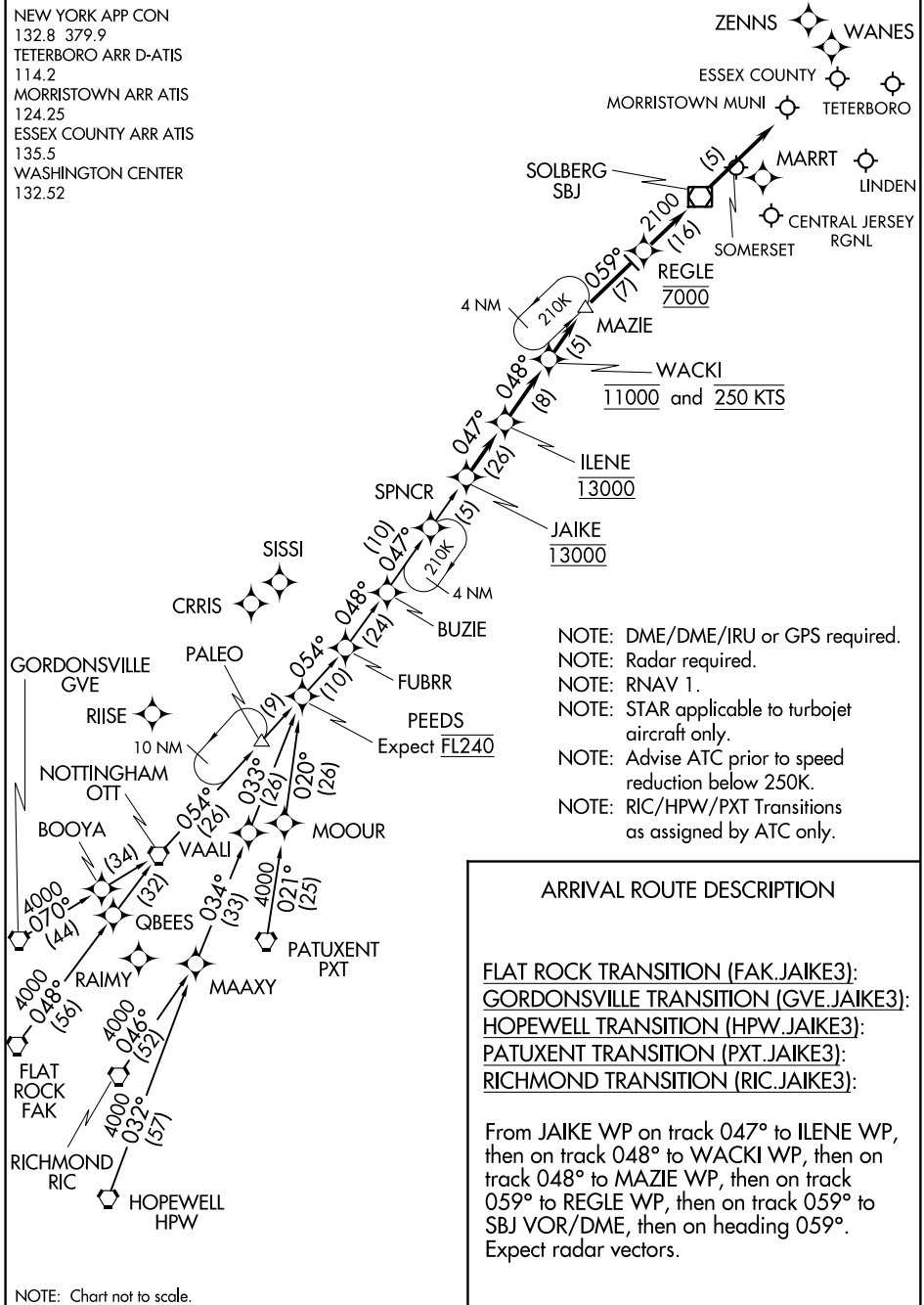


JAIKE THREE ARRIVAL (RNAV)

TETERBORO, NEW JERSEY

NEW YORK APP CON
 132.8 379.9
 TETERBORO ARR D-ATIS
 114.2
 MORRISTOWN ARR ATIS
 124.25
 ESSEX COUNTY ARR ATIS
 135.5
 WASHINGTON CENTER
 132.52



NE-2, 22 JUN 2017 to 20 JUL 2017

NE-2, 22 JUN 2017 to 20 JUL 2017

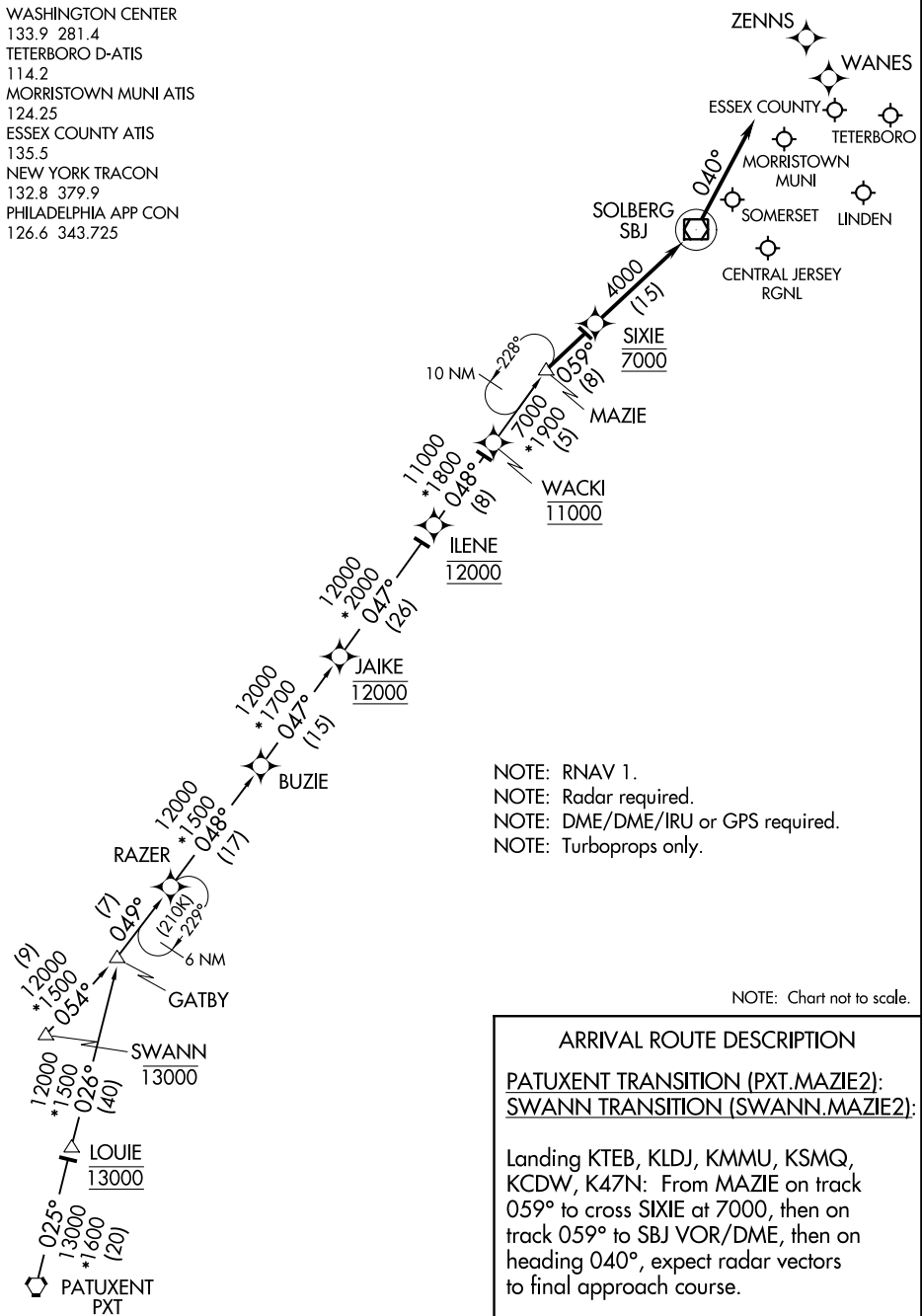
JAIKE THREE ARRIVAL (RNAV)

TETERBORO, NEW JERSEY

MAZIE TWO ARRIVAL (RNAV)

TETERBORO, NEW JERSEY

WASHINGTON CENTER
 133.9 281.4
 TETERBORO D-ATIS
 114.2
 MORRISTOWN MUNI ATIS
 124.25
 ESSEX COUNTY ATIS
 135.5
 NEW YORK TRACON
 132.8 379.9
 PHILADELPHIA APP CON
 126.6 343.725



NOTE: RNAV 1.
 NOTE: Radar required.
 NOTE: DME/DME/IRU or GPS required.
 NOTE: Turboprops only.

NOTE: Chart not to scale.

ARRIVAL ROUTE DESCRIPTION
PATUXENT TRANSITION (PXT.MAZIE2):
SWANN TRANSITION (SWANN.MAZIE2):

Landing KTEB, KLDJ, KMMU, KSMQ, KCDW, K47N: From MAZIE on track 059° to cross SIXIE at 7000, then on track 059° to SBJ VOR/DME, then on heading 040°, expect radar vectors to final approach course.

NE-2, 22 JUN 2017 to 20 JUL 2017

NE-2, 22 JUN 2017 to 20 JUL 2017

MAZIE TWO ARRIVAL (RNAV)

TETERBORO, NEW JERSEY