

WAAS CH 53424 W25A	APP CRS 249°	Rwy Idg THRE Apt Elev	3245 65 86
--	------------------------	-----------------------------	---------------------------------------

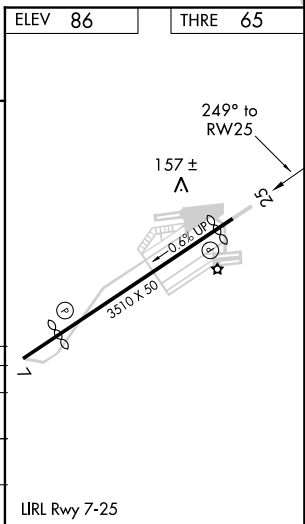
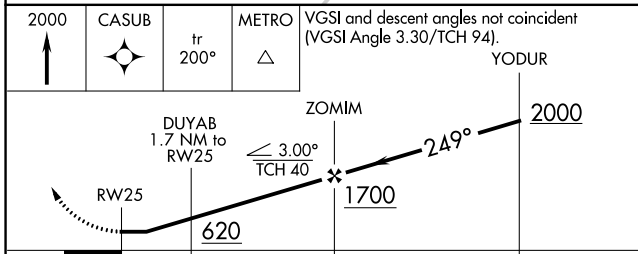
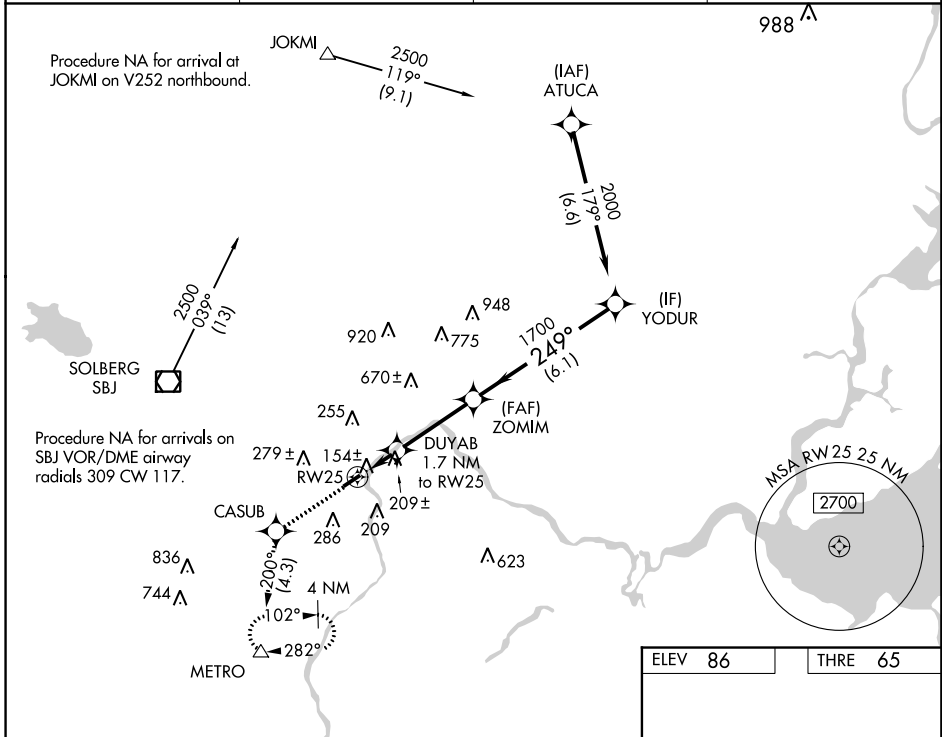
RNAV (GPS) RWY 25

CENTRAL JERSEY RGNL (47N)

NA DME/DME RNP-0.3 NA. Procedure NA at night. Use Trenton altimeter setting, when not received use Newark altimeter setting and increase all MDA 20 feet and LP Cat C visibility 1/8 mile. Helicopter visibility reduction below 1 SM NA.

MISSED APPROACH: Climb to 2000 direct CASUB and on track 200° to METRO and hold.

TRENTON ASOS 126.77	NEW YORK APP CON 132.8 379.9	GCO 121.725	UNICOM 122.7 (CTAF)
-------------------------------	--	-----------------------	-------------------------------



CATEGORY	A	B	C	D
LP MDA	480-1	415 (400-1)	480-1 1/8 415 (400-1 1/8)	NA
LNVA MDA	520-1	455 (500-1)	520-1 3/8 455 (500-1 3/8)	NA
CIRCLING	580-1 494 (500-1)	700-1 614 (700-1)	700-1 3/4 614 (700-1 3/4)	NA

NE-2, 27 APR 2017 to 25 MAY 2017

NE-2, 27 APR 2017 to 25 MAY 2017

APP CRS	Rwy Idg	2930
069°	THRE	82
	Apt Elev	86

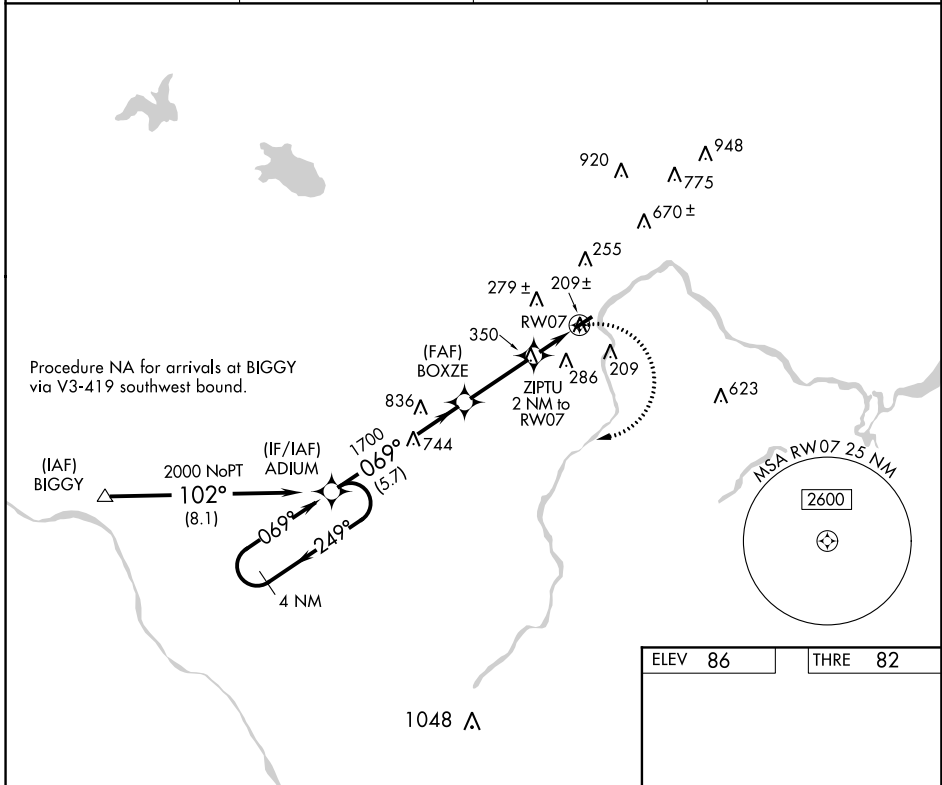
RNAV (GPS) RWY 7

CENTRAL JERSEY RGNL (47N)

NA Procedure NA at night. DME/DME RNP-0.3 NA. Helicopter visibility reduction below 1 SM not authorized. Use Trenton altimeter setting; when not received, use Newark altimeter setting, and increase all MDA 20 feet, increase LNAV Cat C visibility 1/8 mile.

MISSED APPROACH: Climbing right turn to 2000 direct ADIUM and hold.

TRENTON ASOS 126.77	NEW YORK APP CON 132.8 379.9	GCO 121.725	UNICOM 122.7 (CTAF)
-------------------------------	--	-----------------------	-------------------------------



NE-2. 27 APR 2017 to 25 MAY 2017

NE-2. 27 APR 2017 to 25 MAY 2017

	ELEV 86	THRE 82		
4 NM Holding Pattern	AD IUM	2000 AD IUM		
<p>2000 ← 249°</p> <p>→ 069°</p> <p>069°</p> <p>1700</p> <p>3.00° TCH 30</p> <p>740</p> <p>5.7 NM</p> <p>3 NM</p> <p>2 NM</p>	<p>BOXZE</p> <p>ZIPTU 2 NM to RW07</p> <p>RW07</p>			
CATEGORY	A	B	C	D
LNAV MDA	520-1	438 (500-1)	520-1¼ 438 (500-1¼)	NA
CIRCLING	580-1 494 (500-1)	700-1 614 (700-1)	700-1¾ 614 (700-1¾)	NA

LURL Rwy 7-25

VOR/DME SBJ 112.9 Chan 76	APP CRS 128°	Rwy Idg TDZE Apt Elev	N/A N/A 86
---	------------------------	-----------------------------	---------------------------------------

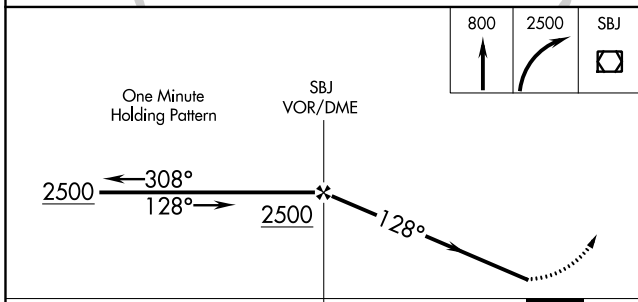
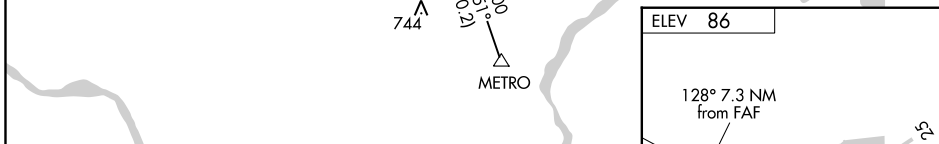
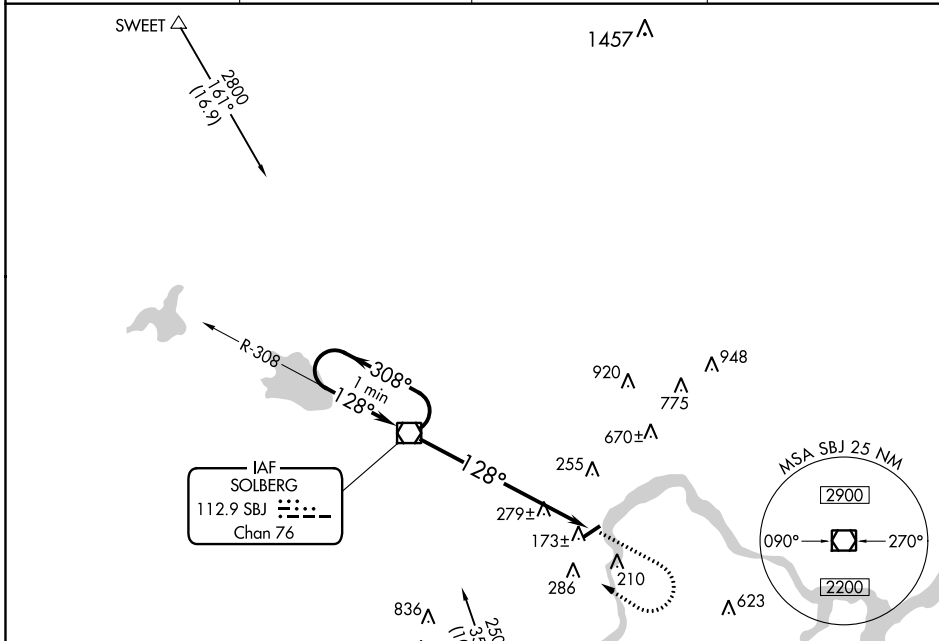
VOR-A

CENTRAL JERSEY RGNL (47N)

NA Use Trenton Mercer altimeter setting; when not received, use Newark Liberty Intl altimeter setting. Procedure NA at night. Helicopter visibility reduction below 1 SM NA.

MISSED APPROACH: Climb to 800 then climbing right turn to 2500 direct SBJ VOR/DME and hold.

TRENTON ASOS 126.77	NEW YORK APP CON 132.8 379.9	GCO 121.725	UNICOM 122.7 (CTAF)
-------------------------------	--	-----------------------	-------------------------------



CATEGORY	A	B	C	D	FAF to MAP 7.3 NM					
CIRCLING	720-1	634 (700-1)	720-1¾ 634 (700-1¾)	NA	Knots	60	90	120	150	180
					Min:Sec	7:18	4:52	3:39	2:55	2:26

VOR-A

NE-2, 27 APR 2017 to 25 MAY 2017

NE-2, 27 APR 2017 to 25 MAY 2017