

AIRPORT DIAGRAM

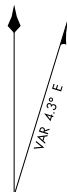
AWOS-3
124.175
CTAF/UNICOM
122.7
GCO
121.725

29° 55' N

ELEV
308

138.2°

5000 X 75



JANUARY 2010
ANNUAL RATE OF CHANGE
0.1° W

MAINTENANCE
HANGARS

TERMINAL

HANGARS

29° 54.5' N

RWY 16-34
S-30

338.2°

FIELD
ELEV
324

34

29° 54' N

CAUTION: BE ALERT TO RUNWAY CROSSING CLEARANCES.
READBACK OF ALL RUNWAY HOLDING INSTRUCTIONS IS REQUIRED.

96°57' W

96°56.5' W

SC-5, 31 MAY 2012 to 28 JUN 2012

SC-5, 31 MAY 2012 to 28 JUN 2012

AIRPORT DIAGRAM

APP CRS 156°	Rwy Idg 5000
	TDZE 318
	Apt Elev 324

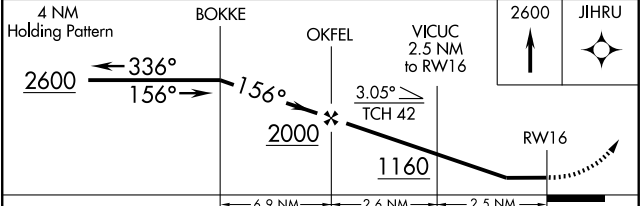
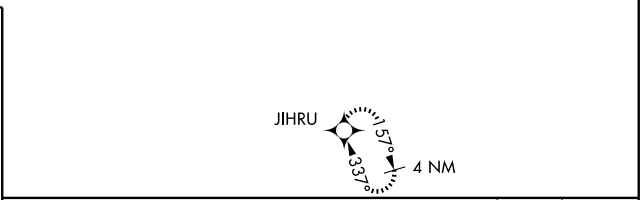
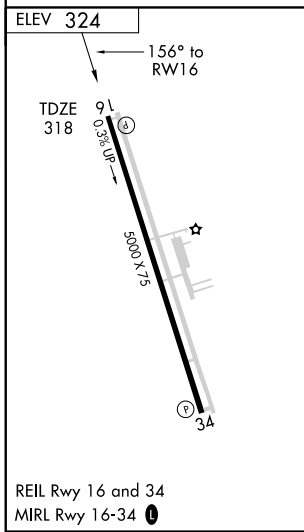
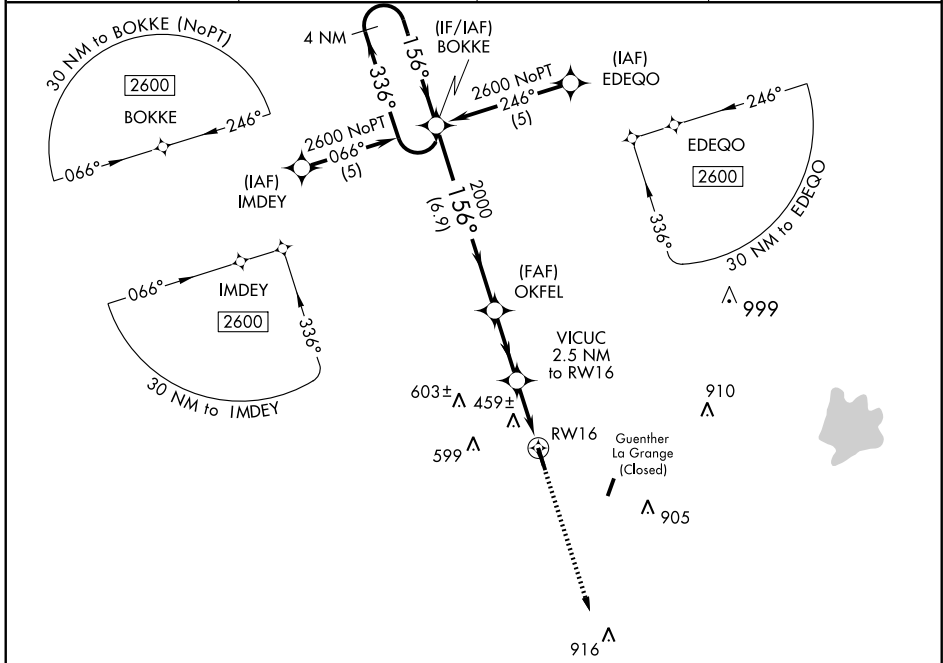
RNAV (GPS) RWY 16

LA GRANGE/ FAYETTE RGNL AIR CENTER (3T5)

⚠ DME/DME RNP-0.3 NA. Visibility reduction by helicopters NA. When local altimeter setting not received, use Giddings-Lee County altimeter settings and increase all MDA 60 feet.

MISSED APPROACH: Climb to 2600 direct JIHRU and hold.

AWOS-3 124.175	AUSTIN APP CON 120.875 270.25	GCO 121.725	UNICOM 122.7 (CTAF) 0
--------------------------	---	-----------------------	---------------------------------



CATEGORY	A	B	C	D
LNAV MDA	720-1	402 (400-1)	720-1¼ 402 (400-1¼)	NA
CIRCLING	780-1	456 (500-1)	780-1½ 456 (500-1½)	NA

SC-5, 31 MAY 2012 to 28 JUN 2012

SC-5, 31 MAY 2012 to 28 JUN 2012

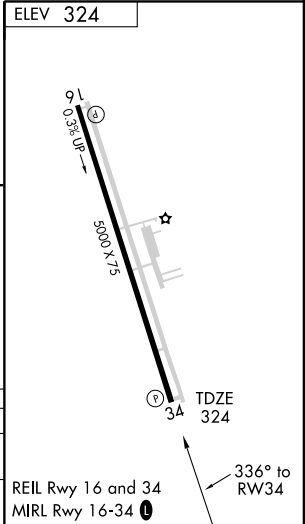
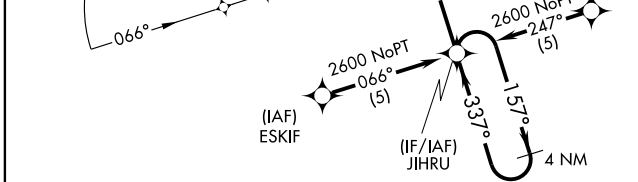
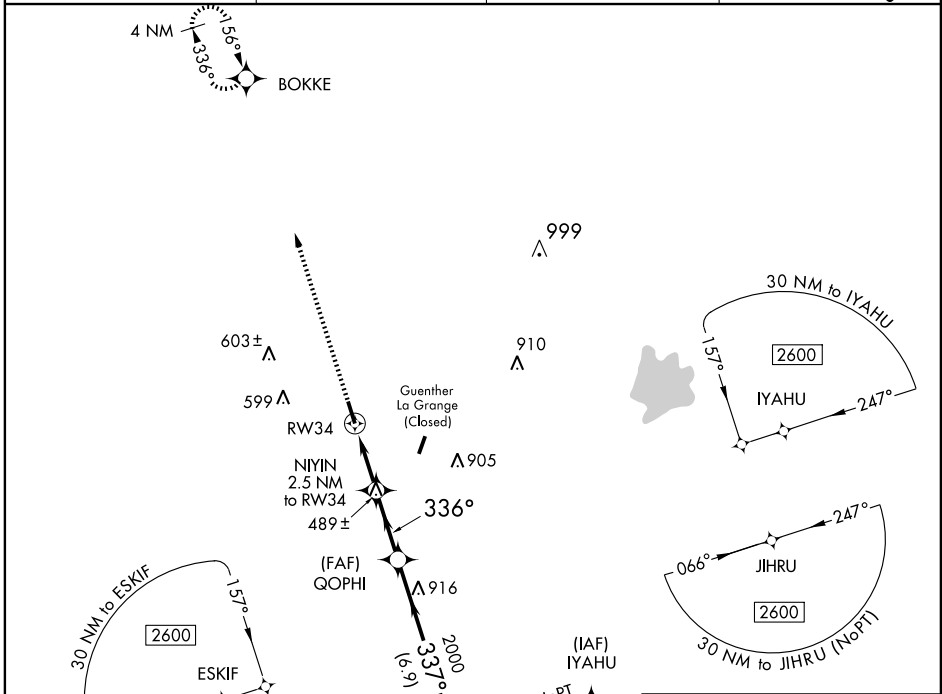
APP CRS 336°	Rwy ldg TDZE Apt Elev	5000 324 324
------------------------	-----------------------------	---

RNAV (GPS) RWY 34

LA GRANGE/ FAYETTE RGNL AIR CENTER (3T5)

⚠ DME/DME RNP-0.3 NA. Visibility reduction by helicopters NA. When local altimeter setting not received, use Giddings-Lee County altimeter setting and increase all MDA 60 feet. **MISSED APPROACH:** Climb to 2600 direct BOKKE and hold.

AWOS-3 124.175	AUSTIN APP CON 120.875 270.25	GCO 121.725	UNICOM 122.7 (CTAF) 0
--------------------------	---	-----------------------	---------------------------------



2600	BOKKE	QOPHI	JIHRU	4 NM Holding Pattern
↑	✧	NIYIN 2.5 NM to RW34	≤ 3.04° TCH 40	157° → 2600
RW34		336°	337°	← 337°
		1160	2000	2600
		→ 2.5 NM	→ 2.6 NM	→ 6.9 NM
		VGSI and descent angles not coincident.		

CATEGORY	A	B	C	D
RNAV MDA	740-1	416 (500-1)	740-1½ 416 (500-1½)	NA
CIRCLING	780-1	456 (500-1)	780-1½ 456 (500-1½)	NA

SC-5, 31 MAY 2012 to 28 JUN 2012

SC-5, 31 MAY 2012 to 28 JUN 2012

LA GRANGE, TEXAS

AL-91.54 (FAA)

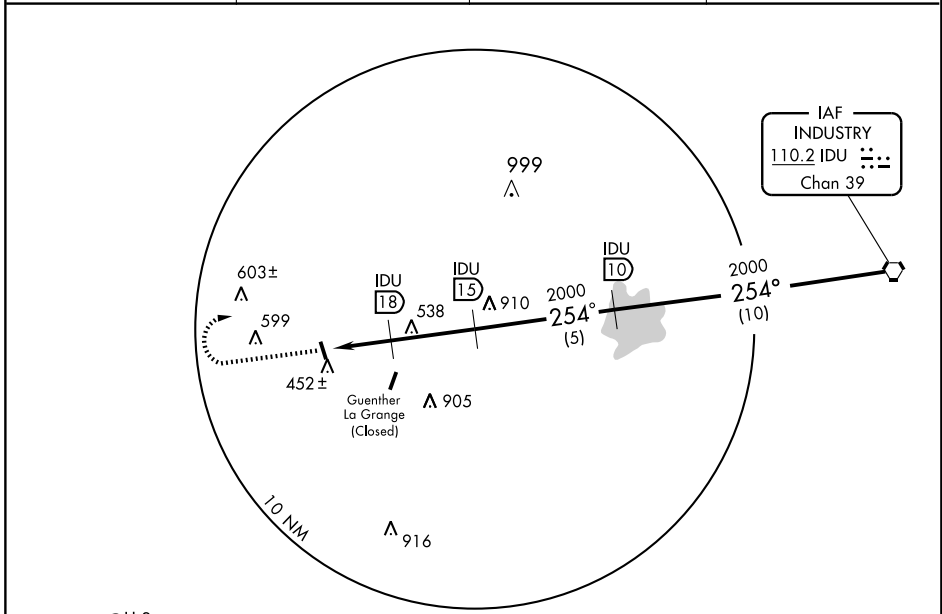
VOR/DME-A

LA GRANGE/FAYETTE RGNL AIR CENTER (3T5)

VORTAC IDU 110.2 Chan 39	APP CRS 254°	Rwy Idg TDZE Apt Elev N/A N/A 322
---------------------------------------	------------------------	---

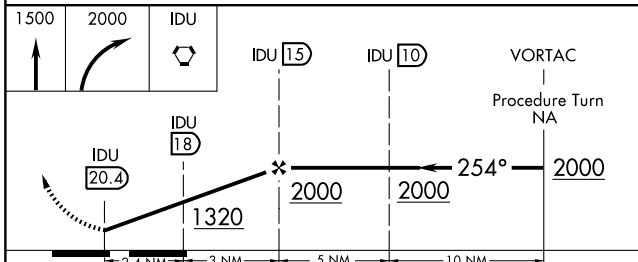
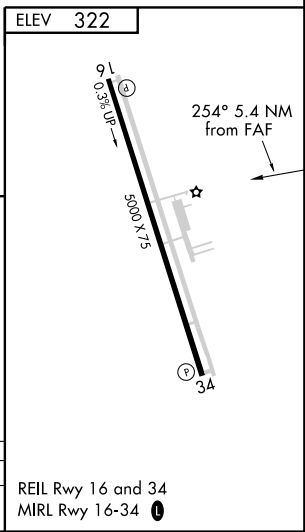
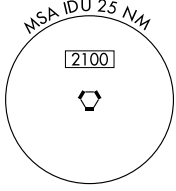
NA	MISSED APPROACH: Climb to 1500 then climbing right turn to 2000 direct IDU VORTAC.
-----------	--

AWOS-3 124.175	AUSTIN APP CON 120.875 270.25	GCO 121.725	UNICOM 122.7 (CTAF)
--------------------------	---	-----------------------	-------------------------------



SC-5, 31 MAY 2012 to 28 JUN 2012

SC-5, 31 MAY 2012 to 28 JUN 2012



CATEGORY	A	B	C	D
CIRCLING	780-1 458 (500-1)	780-1¼ 458 (500-1¼)	780-1½ 458 (500-1½)	NA

REIL Rwy 16 and 34
MIRL Rwy 16-34

LA GRANGE, TEXAS
Amdt 1A 10322

LA GRANGE/FAYETTE RGNL AIR CENTER (3T5)
29°54'N-96°57'W

VOR/DME-A



INSTRUMENT APPROACH PROCEDURE CHARTS

A IFR ALTERNATE AIRPORT MINIMUMS

Standard alternate minimums for non precision approaches are 800-2 (NDB, VOR, LOC, TACAN, LDA, VORTAC, VOR/DME, ASR or WAAS LNAV); for precision approaches 600-2 (ILS or PAR). Airports within this geographical area that require alternate minimums other than standard or alternate minimums with restrictions are listed below. NA - means alternate minimums are not authorized due to unmonitored facility or absence of weather reporting service. Civil pilots see FAR 91. IFR Alternate Airport Minimums: Ceiling and Visibility Minimums not applicable to USA/USN/USAF. Pilots must review the IFR Alternate Airport Minimums Notes for alternate airfield suitability.

NAME ALTERNATE MINIMUMS
ANGLETON/LAKE JACKSON, TX

TEXAS GULF
COAST RGNL (LBX) RNAV (GPS) Rwy 17
RNAV (GPS) Rwy 31

NA when local weather not available.

BAY CITY, TX

BAY CITY MUNI (BYY) RNAV (GPS) Rwy 13
RNAV (GPS) Rwy 31

NA when local weather not available.

BEAUMONT/PORT ARTHUR, TX

JACK BROOKS
RGNL (BPT) ILS or LOC Rwy 12¹²³
LOC BC Rwy 30²³⁴
RNAV (GPS) Rwy 12³⁵
RNAV (GPS) Rwy 16³⁵
RNAV (GPS) Rwy 30³⁵
RNAV (GPS) Rwy 34³⁵
VOR-A³
VOR-B³
VOR-C³
VOR/DME-D³
VOR/DME Rwy 34³⁵
VOR Rwy 12³⁵

¹ILS, LOC, Categories A, B, 900-2; Category C, 900-2½; Category D, 900-2½; Category E, 900-2¾.

²NA when control tower closed.

³NA when local weather not available.

⁴Category D, 800-2¼; Category E, 900-2¾.

⁵Category E, 900-2¾.

BRENHAM, TX

BRENHAM
MUNI (11R) RNAV (GPS) Rwy 16
RNAV (GPS) Rwy 34
VOR/DME Rwy 16

NA when local weather not available.
Category D, 800-2¼.

NAME ALTERNATE MINIMUMS
CLEVELAND, TX

CLEVELAND
MUNI (6R3) RNAV (GPS) Rwy 16

NA when local weather not available.

COLLEGE STATION, TX

EASTERWOOD
FIELD (CLL) ILS or LOC Rwy 34¹²

LOC BC Rwy 16²³

RNAV (GPS) Rwy 10³⁴

RNAV (GPS) Rwy 16³⁴

RNAV (GPS) Rwy 28³⁴

RNAV (GPS) Rwy 34³⁴

VOR/DME Rwy 28⁵

VOR or TACAN Rwy 10³

¹ILS, Category D, 700-2¼; Category E, 900-3. LOC, Category D, 800-2¼; Category E, 900-3.

²NA when control tower closed.

³Category D, 800-2¼; Category E, 900-3.

⁴NA when local weather not available.

⁵Category D, 800-2¼.

CROCKETT, TX

HOUSTON
COUNTY (DKR) RNAV (GPS) Rwy 2
RNAV (GPS) Rwy 20

NA when local weather not available.

GALVESTON, TX

SCHOLLES INTL
AT GALVESTON (GLS) ILS or LOC Rwy 13¹
RNAV (GPS) Rwy 13²
RNAV (GPS) Rwy 17²

¹ILS, Category E, 700-2¼; LOC, Category E, 800-2¼.

²Category E 800-2¼.

31 MAY 2012 to 28 JUN 2012

31 MAY 2012 to 28 JUN 2012





ALTERNATE MINS

M2



NAME ALTERNATE MINIMUMS

GIDDINGS, TX

GIDDINGS-
LEE COUNTY (GYB) RNAV (GPS) Rwy 17
RNAV (GPS) Rwy 35

NA when local weather not available.

HEARNE, TX

HEARNE MUNI (LHB) RNAV (GPS) Rwy 18
RNAV (GPS) Rwy 36

NA when local weather not available.

HOUSTON, TX

DAVID WAYNE HOOKS
MEMORIAL (DWH) RNAV (GPS) Rwy 17R
RNAV (GPS) Rwy 35L

NA when local weather not available.

ELLINGTON

FIELD (EFD) ILS or LOC Rwy 17R¹
ILS or LOC Rwy 35L²
RNAV (GPS) Rwy 4³
RNAV (GPS) Rwy 17R³
RNAV (GPS) Rwy 22³
RNAV (GPS) Rwy 35L³

¹Categories A, B, 1100-2; Categories C, D, E, 1100-3

²ILS, Category E, 700-2¼. LOC, Category E, 800-2¼.

³Category E, 800-2¼.

GEORGE BUSH INTERCONTINENTAL/
HOUSTON (IAH) ILS or LOC Rwy 8R¹
ILS or LOC Rwy 26L²

¹ILS, LOC, Categories A, B, 900-2; Categories C, D, E, 900-2½.

²ILS, Categories A, B, 800-2; Categories C, D, E, 800-2½; LOC, Categories C, D, E, 800-2½.

LONE STAR

EXECUTIVE (CXO) NDB Rwy 14
RNAV (GPS) Rwy 1
RNAV (GPS) Rwy 14
RNAV (GPS) Rwy 19
RNAV (GPS) Rwy 32

NA when local weather not available.

PEARLAND RGNL (LVJ) .. RNAV (GPS) Rwy 32
VOR-B

NA when local weather not available.

NAME ALTERNATE MINIMUMS

HOUSTON, TX (CON'T)

SUGAR LAND
RGNL (SGR) ILS or LOC Rwy 35¹²
RNAV (GPS) Rwy 17
RNAV (GPS) Rwy 35
VOR/DME-A

NA when local weather not available.

¹NA when control tower closed.

²ILS, Categories A, B, C, D, 700-2.

WILLIAM P.

HOBBY (HOU) ILS or LOC Rwy 4
ILS or LOC Rwy 12R
LOC Rwy 22
RNAV (GPS) Rwy 4
RNAV (GPS) Rwy 12R
RNAV (GPS) Rwy 22
VOR/DME Rwy 30L

Category E, 900-3.

HUNTSVILLE, TX

HUNTSVILLE
MUNI (UTS) RNAV (GPS) Rwy 18
VOR/DME-A

NA when local weather not available.

JACKSONVILLE, TX

CHEROKEE
COUNTY (JSO) RNAV (GPS) Rwy 14
VOR/DME Rwy 14

NA when local weather not available.

JASPER, TX

JASPER COUNTY-
BELL FIELD (JAS) RNAV (GPS) Rwy 18
RNAV (GPS) Rwy 36

NA when local weather not available.

LA GRANGE, TX

FAYETTE RGNL
AIR CENTER (3T5) RNAV (GPS) Rwy 16
RNAV (GPS) Rwy 34

NA when local weather not available.

LUFKIN, TX

ANGELINA COUNTY (LFK) VOR Rwy 33

NA when local weather not available.

NACOGDOCHES, TX

A L MANGHAM
JR. RGNL (OCH) RNAV (GPS) Rwy 36

NA when local weather not available.

31 MAY 2012 to 28 JUN 2012

31 MAY 2012 to 28 JUN 2012



ALTERNATE MINS

M2

SC-5





ALTERNATE MINS

M3



NAME ALTERNATE MINIMUMS NAME

ALTERNATE MINIMUMS

ORANGE, TX

ORANGE
COUNTY (ORG) RNAV (GPS) Rwy 22
VOR/DME Rwy 22

NA when local weather not available.

PALESTINE, TX

PALESTINE
MUNI (PSN) RNAV (GPS) Rwy 18
RNAV (GPS) Rwy 36

NA when local weather not available.

PORT LAVACA, TX

CALHOUN
COUNTY (PKV) RNAV (GPS) Rwy 14

NA when local weather not available.

VICTORIA, TX

VICTORIA
RGNL (VCT) RNAV (GPS) Rwy 13L
RNAV (GPS) Rwy 31R
VOR Rwy 13L
VOR/DME Rwy 31R

NA when local weather not available.

WHARTON, TX

WHARTON
RGNL (ARM) RNAV (GPS) Rwy 14
RNAV (GPS) Rwy 32
VOR/DME-A

NA when local weather not available.

31 MAY 2012 to 28 JUN 2012

31 MAY 2012 to 28 JUN 2012



ALTERNATE MINS

M3

SC-5



TAKE-OFF MINIMUMS AND (OBSTACLE) DEPARTURE PROCEDURES

12152

INSTRUMENT APPROACH PROCEDURE CHARTS

IFR TAKE-OFF MINIMUMS AND (OBSTACLE) DEPARTURE PROCEDURES

Civil Airports and Selected Military Airports

ALL USERS: Airports that have Departure Procedures (DPs) designed specifically to assist pilots in avoiding obstacles during the climb to the minimum enroute altitude, and/or airports that have civil IFR take-off minimums other than standard, are listed below. Take-off Minimums and Departure Procedures apply to all runways unless otherwise specified. Altitudes, unless otherwise indicated, are minimum altitudes in MSL.

DPs specifically designed for obstacle avoidance are referred to as Obstacle Departure Procedures (ODPs) and are described below in text, or published separately as a graphic procedure. If the (Obstacle) DP is published as a graphic procedure, its name will be listed below, and it can be found in either this volume (civil), or the applicable military volume, as appropriate. Users will recognize graphic obstacle DPs by the term "(OBSTACLE)" included in the procedure title; e.g., TETON TWO (OBSTACLE). If not specifically assigned a departure procedure (i.e., ODP, SID, or radar vector) as part of an IFR clearance, an ODP may be required to be flown for obstacle clearance, even though not specifically stated in the IFR clearance. When doing so in this manner, ATC should be informed when the ODP being used contains a specified route to be flown, restrictions before turning, and/or altitude restrictions.

Graphic DPs designed by ATC to standardize traffic flows, ensure aircraft separation and enhance capacity are referred to as "Standard Instrument Departures (SIDs)". SIDs also provide obstacle clearance and are published under the appropriate airport section. ATC clearance must be received prior to flying a SID.

CIVIL USERS NOTE: Title 14 Code of Federal Regulations Part 91 prescribes standard take-off rules and establishes take-off minimums for certain operators as follows: (1) Aircraft having two engines or less - one statute mile. (2) Aircraft having more than two engines - one-half statute mile. These standard minima apply in the absence of any different minima listed below.

MILITARY USERS NOTE: Civil (nonstandard) take-off minima are published below. For military take-off minima, refer to appropriate service directives.

NAME TAKE-OFF MINIMUMS

ANAHUAC, TX

CHAMBERS COUNTY (T00)
ORIG 11069 (FAA)

TAKE-OFF MINIMUMS: **Rwys 17,35**, NA-Environmental. NOTE: **Rwy 12**, vehicles on roadway beginning 19' from DER, left and right of centerline, up to 15' AGL/34' MSL. Trees beginning 986' from DER, 732' left of centerline, up to 100' AGL/119' MSL. **Rwy 30**, trees beginning 60' from DER, left and right of centerline, up to 100' AGL/124' MSL. Vehicles on roadway 121' from DER, 512' right of centerline, up to 17' AGL/36' MSL. Tower 2152' from DER, 593' right of centerline 60' AGL/83' MSL.

ANGLETON/LAKE JACKSON, TX

TEXAS GULF COAST RGNL (LBX)
AMDT 1 08157 (FAA)

NOTE: **Rwy 35**, tree 1510' from departure end of runway, 721' left of centerline, 48' AGL/68' MSL.

BAY CITY, TX

BAY CITY MUNI (BYY)
ORIG 11349 (FAA)

NOTE: **Rwy 13**, trees beginning 51' from DER, left and right of centerline, up to 55' AGL/92' MSL. Poles beginning 635' from DER, 402' left of centerline, 31' AGL/68' MSL. **Rwy 31**, trees beginning 102' from DER, left and right of centerline, up to 34' AGL/80' MSL.

NAME TAKE-OFF MINIMUMS

BAYTOWN, TX

BAYTOWN (HPY)
ORIG 10210 (FAA)

TAKE-OFF MINIMUMS: **Rwy 14**, 300-1 or std. w/ min. climb of 420' per NM to 300.

NOTE: **Rwy 14**, multiple trees, power poles, and houses beginning at DER, left and right of centerline, up to 60' AGL/89' MSL. Vehicle 187' from DER, 47' right of centerline, 15' AGL/44' MSL. Tower 4066' from DER, 1217' right of centerline, 156' AGL/180' MSL. **Rwy 32**, vehicle 53' from DER, 23' right of centerline, 15' AGL/49' MSL. Buildings beginning 104' from DER, left and right of centerline, up to 30' AGL/59' MSL. Trees beginning 116' from DER, left and right of centerline, up to 60' AGL/94' MSL.

R W J AIRPARK

NOTE: **Rwy 8**, trees abeam departure end of runway, 147' left of centerline, 45' AGL/72' MSL. Poles 236' from departure end of runway, 90' right of centerline, 30' AGL/57' MSL. **Rwy 14**, trees 314' from departure end of runway, 44' right of centerline, 35' AGL/87' MSL. Road 125' from departure end of runway, 15' AGL/42' MSL. **Rwy 26**, powerlines 460' from departure end of runway, 32' AGL/62' MSL. Road 550' from departure end of runway, 15' AGL/50' MSL. **Rwy 32**, road 220' from departure end of runway, 15' AGL/48' MSL.

12152

TAKE-OFF MINIMUMS AND (OBSTACLE) DEPARTURE PROCEDURES

TAKE-OFF MINIMUMS AND (OBSTACLE) DEPARTURE PROCEDURES

12152

BEAUMONT, TX

BEAUMONT MUNI (BMT)

ORIG 09015 (FAA)

TAKE-OFF MINIMUMS: **Rwys 16,34**, NA - Obstacles.

NOTE: **Rwy 13**, multiple trees, poles and buildings beginning 82' from departure end of runway, 2' left of centerline, up to 74' AGL/106' MSL. Multiple trees, poles and signs beginning 441' from departure end of runway, 22' right of centerline, up to 73' AGL/105' MSL. Vehicle on road 152' from departure end of runway, 428' left of centerline, 15' AGL/46' MSL. Train on railroad 545' from departure end of runway, 506' right of centerline, 23' AGL/57' MSL. **Rwy 31**, multiple trees, poles and transmission line towers beginning 81' from departure end of runway, 2' left of centerline, up to 64' AGL/94' MSL. Multiple trees, poles, and transmission line towers beginning 241' from departure end of runway, 4' right of centerline, up to 56' AGL/88' MSL. Train on railroad 375' from departure end of runway, 354' right of centerline, 23' AGL/55' MSL.

BEAUMONT/PORT ARTHUR, TX

JACK BROOKS RGNL (BPT)

ORIG 09351 (FAA)

NOTE: **Rwy 12**, multiple trees beginning 1024' from DER, 202' left of centerline, up to 43' AGL/48' MSL. Trees 1676' from DER, 778' right of centerline, 51' AGL/56' MSL. **Rwy 16**, multiple trees beginning 580' from DER, 519' right of centerline, up to 51' AGL/56' MSL. **Rwy 30**, trees 1005' from DER, 629' right of centerline, 54' AGL/64' MSL. Multiple trees beginning 1041' from DER, 617' left of centerline, up to 67' AGL/77' MSL. **Rwy 34**, building 770' from DER, 386' right of centerline, 28' AGL/38' MSL. Multiple trees beginning 1274' from DER, 398' right of centerline, up to 70' AGL/80' MSL. Multiple trees beginning 1288' from DER, 218' left of centerline, up to 72' AGL/82' MSL. Tower 1487' from DER, 398' right of centerline, 60' AGL/75' MSL.

BRENHAM, TX

BRENHAM MUNI (11R)

AMDT 1 10042 (FAA)

NOTE: **Rwy 16**, trees and poles beginning 45' from DER, 272' right of centerline to 305' left of centerline, up to 89' AGL/299' MSL. **Rwy 34**, trees beginning 18' from DER, 325' right of centerline to 380' left of centerline, up to 61' AGL/351' MSL.

BRYAN, TX

COUTLER FIELD

NOTE: **Rwy 15**, vehicle on road 266' from departure end of runway, on centerline, 17' AGL/386' MSL. Multiple trees and poles beginning 169' from departure end of runway, 339' right of centerline, up to 20' AGL/389' MSL. Multiple trees and poles beginning 203' from departure end of runway, 245' left of centerline, up to 35' AGL/400' MSL. **Rwy 33**, multiple poles and T-L towers beginning 36' from departure end of runway, 207' left of centerline, up to 35' AGL/382' MSL. Trees 508' from departure end of runway, 290' right of centerline, 25' AGL/371' MSL.

CALDWELL, TX

CALDWELL MUNI (RWV)

ORIG-A 11097 (FAA)

TAKE-OFF MINIMUMS: **Rwy 33**, 400-1.

NOTE: **Rwy 33**, tower 3624' from DER, 1031' left of centerline, 215' AGL/648' MSL.

CENTER, TX

CENTER MUNI (F17)

ORIG 10210 (FAA)

DEPARTURE PROCEDURE: **Rwy 17**, climb heading 167° to 1000 before turning right.

NOTE: **Rwy 17**, numerous trees beginning 326' from DER, 432' right and left of centerline, up to 100' AGL/414' MSL. Vehicle on road 234' from DER, 530' left of centerline, up to 15' AGL/314' MSL. **Rwy 35**, numerous trees beginning 1724' from DER, 388' left and right of centerline, up to 100' AGL/459' MSL. Vehicle on road 1091' from DER, 742' right of centerline, up to 15' AGL/354' MSL.

CLEVELAND, TX

CLEVELAND MUNI (6R3)

AMDT 1 11265 (FAA)

DEPARTURE PROCEDURE: **Rwy 16**, climb heading 157° to 1400 before turning right. **Rwy 34**, climb heading 312° to 2000 before proceeding on course.

NOTE: **Rwy 16**, trees beginning abeam DER, right and left of centerline, up to 100' AGL/239' MSL. **Rwy 34**, trees beginning 120' from DER, 243' left of centerline, up to 100' AGL/259' MSL. Trees and poles beginning 225' from DER, 363' right of centerline, up to 100' AGL/220' MSL. Vehicles on road 738' from DER, right and left of centerline, up to 19' AGL/169' MSL.

COLLEGE STATION, TX

EASTERWOOD FIELD (CLL)

AMDT 3 11097 (FAA)

TAKE-OFF MINIMUMS: **Rwy 4**, 300-1¾ or std. w/min. climb of 243' per NM to 700.

DEPARTURE PROCEDURE: Climb heading 343° to 1000 before turning right.

NOTE: **Rwy 4**, trees beginning 247' from DER, 103' right of centerline, up to 75' AGL/384' MSL. Trees beginning 765' from DER, 120' left of centerline, up to 41' AGL/341' MSL. **Rwy 10**, multiple trees beginning 24' from DER, 251' right of centerline, up to 40' AGL/350' MSL. Multiple trees and OL on elevator beginning 498' from DER, 100' left of centerline, up to 66' AGL/366' MSL. **Rwy 16**, tree 969' from DER, 705' left of centerline, up to 75' AGL/374' MSL. **Rwy 22**, trees beginning 108' from DER, 83' right of centerline, up to 75' AGL/394' MSL. Trees beginning 124' from DER, 10' left of centerline, up to 75' AGL/384' MSL. **Rwy 28**, multiple trees beginning 474' from DER, 86' right of centerline, up to 75' AGL/404' MSL. Multiple trees and light poles beginning 187' from DER, 283' left of centerline, up to 75' AGL/404' MSL. **Rwy 34**, trees beginning 775' from DER, 474' right of centerline, up to 75' AGL/394' MSL. Vehicles on roads beginning 748' from DER, 97' right of centerline, up to 17' AGL/346' MSL. Trees and terrain beginning 136' from DER, 235' left of centerline, up to 50' AGL/380' MSL. Vehicles on road 1112' from DER, 175' left of centerline, up to 15' AGL/354' MSL.

31 MAY 2012 to 28 JUN 2012

31 MAY 2012 to 28 JUN 2012

12152

TAKE-OFF MINIMUMS AND (OBSTACLE) DEPARTURE PROCEDURES

TAKE-OFF MINIMUMS AND (OBSTACLE) DEPARTURE PROCEDURES

12152

CROCKETT, TX

HOUSTON COUNTY (DKR)

ORIG 11349 (FAA)

TAKE-OFF MINIMUMS: **Rwy 2**, 400-2 or std. w/min. climb of 280' per NM to 800. **Rwy 20**, 300-1½ or std. w/min. climb of 459' per NM to 700.

NOTE: **Rwy 2**, multiple trees beginning 57' from DER, 61' right of centerline, up to 50' AGL/399' MSL. Multiple trees and terrain beginning 27' from DER, 109' left of centerline, up to 50' AGL/409' MSL. Tower 1.5 NM from DER, 2864' left of centerline 233' AGL/623' MSL. **Rwy 20**, multiple towers beginning 4567' from DER, 1025' right of centerline, up to 200' AGL/529' MSL.

EAGLE LAKE, TX

EAGLE LAKE

TAKE-OFF MINIMUMS: **Rwy 17**, 200-1, or std. with a min. climb of 420' per NM to 500.

NOTE: **Rwy 17**, tower 3068' from departure end of runway, 793' left of centerline, 192' AGL/317' MSL.

GALVESTON, TX

SCHOLTES INTL AT GALVESTON (GLS)

AMDT 4 08157 (FAA)

TAKE-OFF MINIMUMS: **Rwy 17**, 300-1 or std. w/min. climb of 502' per NM to 300.

NOTE: **Rwy 13**, bush 381' from departure end of runway, 533' left of centerline, 15' AGL/20' MSL. Fence 201' from departure end of runway, 490' left of centerline, 6' AGL/11' MSL. Tree 343' from departure end of runway, 468' right of centerline, 12' AGL/17' MSL. **Rwy 17**, building 3057' from departure end of runway, 339' left of centerline, 123' AGL/130' MSL. Multiple poles beginning 2034' from departure end of runway, 87' right of centerline, up to 60' AGL/70' MSL. Multiple transmission towers beginning 636' from departure end of runway, 551' right of centerline, up to 55' AGL/60' MSL. Tree 460' from departure end of runway, 316' right of centerline, 22' AGL/29' MSL. **Rwy 31**, multiple cranes beginning 4341' from departure end of runway, 1017' left of centerline, up to 131' AGL/131' MSL. **Rwy 35**, tree 730' from departure end of runway, 501' right of centerline, 27' AGL/32' MSL.

GIDDINGS, TX

GIDDINGS-LEE COUNTY (GYB)

ORIG 10210 (FAA)

NOTE: **Rwy 17**, numerous trees beginning 720' from DER, 58' right of centerline, up to 50' AGL/479' MSL. Numerous trees beginning 754' from DER, 340' left of centerline, up to 50' AGL/479' MSL. **Rwy 35**, numerous trees beginning 613' from DER, 272' right of centerline, up to 50' AGL/539' MSL. Numerous trees beginning 558' from DER, 265' left of centerline, up to 50' AGL/559' MSL. Vehicle on road 516' from DER, 246' left of centerline, 15' AGL/514' MSL.

HOUSTON, TX

DAN JONES INTL (T51)

ORIG 11321 (FAA)

TAKE-OFF MINIMUMS: **Rwy 17**, NA - numerous trees. **Rwy 35**, NA - numerous trees.

HOUSTON, TX (CON'T)

DAVID WAYNE HOOKS MEMORIAL (DWH)

AMDT 3 08157 (FAA)

TAKE-OFF MINIMUMS: **Rwys 17L, 35R**, NA - Environmental. **Waterways 17, 35**, NA - air traffic.

NOTE: **Rwy 17R**, multiple trees beginning 708' from departure end of runway, 68' left of centerline, up to 71' AGL/220' MSL. Multiple hangars beginning 433' from departure end of runway, 515' left of centerline, up to 37' AGL/182' MSL. DME antenna 653' from departure end of runway, 256' left of centerline, 13' AGL/162' MSL. Multiple trees and pole beginning 85' from departure end of runway, 294' right of centerline, up to 45' AGL/189' MSL. **Rwy 35L**, multiple trees and poles beginning 144' from departure end of runway, 32' left of centerline, up to 79' AGL/238' MSL. Multiple hangars and buildings beginning 85' from departure end of runway, 9' left of centerline, up to 53' AGL/202' MSL. Multiple trees, towers and pole beginning 100' from departure end of runway, 124' right of centerline, up to 93' AGL/247' MSL. Vehicle and road 315' from departure end of runway, on centerline 15' AGL/166' MSL. Building 894' from departure end of runway, 231' right of centerline, 23' AGL/173' MSL.

ELLINGTON FIELD (EFD)

AMDT 2 08157 (FAA)

NOTE: **Rwy 17R**, pole 1489' from departure end of runway, 817' right of centerline, 40' AGL/74' MSL.

Rwy 22, antenna on building 1998' from departure end of runway, 598' right of centerline, 54' AGL/83' MSL. Obstruction light on glide slope 327' from departure end of runway, 543' left of centerline, 39' AGL/68' MSL. **Rwy 35R**, tree 1597' from departure end of runway, 32' left of centerline, 33' AGL/80' MSL. **Rwy 35L**, multiple trees beginning 1118' from departure end of runway, 679' right of centerline, up to 37' AGL/77' MSL. Crane 2352' from departure end of runway, 1024' left of centerline, 37' AGL/97' MSL.

GEORGE BUSH INTERCONTINENTAL/ HOUSTON (IAH)

AMDT 2 08157 (FAA)

NOTE: **Rwy 8L**, tree 2866' from departure end of runway, 921' left of centerline, 107' AGL/201' MSL. Multiple trees beginning 2750' from departure end of runway, 106' right of centerline, up to 80' AGL/174' MSL. **Rwy 15L**, multiple trees 2638' from departure end of runway, 758' right of centerline, up to 76' AGL/160' MSL. **Rwy 15R**, tower 1431' from departure end of runway, 591' left of centerline, 48' AGL/133' MSL. Antenna on glideslope 1469' from departure end of runway, 621' left of centerline, 49' AGL/133' MSL. **Rwy 26R**, pole 950' from departure end of runway, 660' right of centerline, 40' AGL/129' MSL. **Rwy 33R**, tree 2868' from departure end of runway, 1027' right of centerline, 73' AGL/172' MSL.

HOUSTON EXECUTIVE (TME)

DEPARTURE PROCEDURE: **Rwy 36**, Climb heading 355° to 700 before turning east.

NOTE: **Rwy 36**, power poles from left to right beginning 703' from departure end of runway, 623' left to 685' right of centerline, up to 32' AGL/196' MSL.

31 MAY 2012 to 28 JUN 2012

31 MAY 2012 to 28 JUN 2012

12152

TAKE-OFF MINIMUMS AND (OBSTACLE) DEPARTURE PROCEDURES

TAKE-OFF MINIMUMS AND (OBSTACLE) DEPARTURE PROCEDURES

12152

HOUSTON, TX (CON'T)

HOUSTON-SOUTHWEST (AXH)

AMDT 5 08157 (FAA)

DEPARTURE PROCEDURE: **Rwy 9**, climb heading 089° to 2000 before turning left. **Rwy 27**, climb heading 269° to 2200 before turning right.

NOTE: **Rwy 9**, multiple hangars beginning 239' from departure end of runway, 360' right of centerline, up to 42' AGL/106' MSL. Multiple trees beginning 501' from departure end of runway, 355' right of centerline, up to 43' AGL/111' MSL. Multiple hangars beginning 119' from departure end of runway, 498' left of centerline, up to 41' AGL/105' MSL. Pole 332' from departure end of runway, 299' left of centerline, 43' AGL/97' MSL. Antenna 1172' from departure end of runway, 658' left of centerline, 51' AGL/115' MSL. Multiple trees beginning 558' from departure end of runway, 68' left of centerline, up to 58' AGL/122' MSL. **Rwy 27**, multiple trees beginning 1050' from departure end of runway, 40' left of centerline, up to 71' AGL/140' MSL. Vehicle and road 99' from departure end of runway, 291' right of centerline, 15' AGL/83' MSL. Multiple trees beginning 873' from departure end of runway, 514' right of centerline, up to 59' AGL/130' MSL. Multiple transmission poles beginning 1304' from departure end of runway, 131' right of centerline, up to 41' AGL/110' MSL.

LONE STAR EXECUTIVE (CXO)

AMDT 3 10266 (FAA)

NOTE: **Rwy 1**, trees beginning 194' from DER, 130' right of centerline, up to 100' AGL/374' MSL. Trees beginning 817' from DER, 15' left of centerline, up to 100' AGL/359' MSL. **Rwy 14**, trees and obstruction light on DME beginning 399' from DER, 80' right of centerline, up to 100' AGL/329' MSL. Trees beginning 640' from DER, 408' left of centerline, up to 100' AGL/329' MSL. **Rwy 19**, trees beginning 68' from DER, 64' right of centerline, up to 100' AGL/344' MSL. Trees beginning 1' from DER, 159' left of centerline, up to 100' AGL/339' MSL. **Rwy 32**, trees beginning 1785' from DER, 973' right of centerline, up to 100' AGL/339' MSL. Trees and vehicles on road beginning 603' from DER, 458' left of centerline, up to 100' AGL/354' MSL.

PEARLAND RGNL

DEPARTURE PROCEDURE: **Rwy 14**, climb heading 139° to 1600 before proceeding south through southwest. **Rwy 32**, climb heading 319° to 900 before proceeding on course.

NOTE: **Rwy 14**, multiple trees beginning 199' from departure end of runway, 226' right of centerline, up to 66' AGL/100' MSL. Vehicle on road 398' from departure end of runway, 405' left of centerline, 9' AGL/55' MSL. Trees 1287' from departure end of runway, 453' left of centerline, up to 56' AGL/90' MSL. **Rwy 32**, multiple trees beginning 690' from departure end of runway, 81' left of centerline, up to 79' AGL/128' MSL. Multiple poles beginning 745' from departure end of runway, 24' left of centerline, up to 40' AGL/80' MSL. Multiple trees and poles beginning 29' from departure end of runway, 11' right of centerline, up to 64' AGL/104' MSL. Building 237' from departure end of runway, 520' right of centerline, 32' AGL/72' MSL.

HOUSTON, TX (CON'T)

SUGAR LAND RGNL (SGR)

AMDT 7 08157 (FAA)

DEPARTURE PROCEDURE: **Rwy 17**, climb heading 170° to 1500 before turning eastbound. **Rwy 35**, climb heading 350° to 1100 before turning southbound.

NOTE: **Rwy 17**, multiple poles beginning 436' from departure end of runway, 172' right of centerline, up to 44' AGL/124' MSL. Railroad 110' from departure end of runway, 10' left of centerline, 23' AGL/104' MSL. Multiple poles beginning 135' from departure end of runway, 270' left of centerline, up to 44' AGL/111' MSL. **Rwy 35**, vehicle and road 65' from departure end of runway, 2' right of centerline, 15' AGL/96' MSL. Multiple trees beginning 37' from departure end of runway, 275' right of centerline, up to 81' AGL/164' MSL. DME antenna 380' from departure end of runway, 253' right of centerline, 24' AGL/100' MSL. Multiple trees beginning 83' from departure end of runway, 65' left of centerline, up to 81' AGL/155' MSL.

WEISER AIR PARK (EYQ)

AMDT 2 08157 (FAA)

TAKE-OFF MINIMUMS: **Rwy 9**, 200-1 or std. w/min. climb of 399' per NM to 400.

NOTE: **Rwy 9**, tank 4127' from departure end of runway, 1455' left of centerline, 147' AGL/282' MSL. **Rwy 27**, railroad 462' from departure end of runway, 555' left of centerline, 23' AGL/165' MSL. Vehicle and road 650' from departure end of runway, 7' left of centerline, 17' AGL/159' MSL.

WEST HOUSTON (IWS)

AMDT 3 09295 (FAA)

NOTE: **Rwy 15**, vehicles on roadway beginning abeam DER, left and right of centerline, up to 15' AGL/124' MSL. Building 177' from DER, 398' left of centerline, 18' AGL/126' MSL. Trees beginning 178' from DER, 289' right of centerline, up to 100' AGL/209' MSL. **Rwy 33**, building 265' from DER, 364' left of centerline, 33' AGL/143' MSL. Trees beginning 2706' from DER, 700' left of centerline, up to 100' AGL/214' MSL. Trees beginning 3159' from DER, 747' right of centerline, up to 100' AGL/216' MSL.

31 MAY 2012 to 28 JUN 2012

31 MAY 2012 to 28 JUN 2012

12152

TAKE-OFF MINIMUMS AND (OBSTACLE) DEPARTURE PROCEDURES

TAKE-OFF MINIMUMS AND (OBSTACLE) DEPARTURE PROCEDURES

12152

HOUSTON, TX (CON'T)

WILLIAM P. HOBBY (HOU)
AMDT 5 08157 (FAA)

TAKE-OFF MINIMUMS: **Rwy 4**, 300-1 or std. w/ min. climb of 270' per NM to 300. **Rwy 17**, 300-1. **Rwy 22**, std. w/ min. climb of 290' per NM to 1500.

DEPARTURE PROCEDURE: **Rwy 17**, climb heading 174° to 700 before turning westbound. **Rwy 30L**, climb heading 309° to 800 before turning westbound. **Rwy 30R**, climb heading 309° to 800 before turning westbound.

NOTE: **Rwy 4**, pole 4403' from departure end of runway, 1609' right of centerline, 121' AGL/166' MSL. Light on building 1562' from departure end of runway, 859' right of centerline, 59' AGL/103' MSL. Building 3990' from departure end of runway, 1223' right on centerline, 139' AGL/174' MSL. Light on flagpole 4618' from departure end of runway, 768' right of centerline, 117' AGL/161' MSL NE. **Rwy 12L**, antenna on hanger 1548' from departure end of runway, 424' left of centerline, 45' AGL/85' MSL. **Rwy 12R**, vehicle and road 514' from departure end of runway, 543' right of centerline, 17' AGL/55' MSL. Tree 1217' from departure end of runway, 756' right of centerline, 43' AGL/89' MSL. Fence 85' from departure end of runway, 492' left of centerline, 4' AGL/45' MSL. Vehicle and road 176' from departure end of runway, 497' left of centerline, 17' AGL/55' MSL. Pole 1011' from departure end of runway, 696' left of centerline, 33' AGL/73' MSL. Tree 1256' from departure end of runway, 783' left of centerline, 38' AGL/78' MSL. **Rwy 17**, multiple poles beginning 606' from departure end of runway, 393' right of centerline, up to 79' AGL/124' MSL. Crane 1795' from departure end of runway, 689' right of centerline, 100' AGL/150' MSL. Antenna on building 620' from departure end of runway, 312' left of centerline, 27' AGL/72' MSL. Multiple trees beginning 721' from departure end of runway, 260' left of centerline, up to 71' AGL/116' MSL. Radar reflector 1214' from departure end of runway, 258' left of centerline, 32' AGL/77' MSL. **Rwy 22**, pole 727' from departure end of runway, 626' right of centerline, 28' AGL/77' MSL. Tree 1310' from departure end of runway, 679' right of centerline, 27' AGL/76' MSL. Antenna on light pole 1805' from departure end of runway, 968' right of centerline, 60' AGL/109' MSL. **Rwy 30L**, antenna on building 547' from departure end of runway, 274' right of centerline, 23' AGL/69' MSL. Multiple poles beginning 341' from departure end of runway, 501' left of centerline, up to 39' AGL/84' MSL. Multiple trees beginning 1392' from departure end of runway, 466' left of centerline, up to 78' AGL/118' MSL. **Rwy 30R**, pole 1096' from departure end of runway, 785' right of centerline, 29' AGL/75' MSL. Antenna on building 500' from departure end of runway, 525' left of centerline, 33' AGL/69' MSL. **Rwy 35**, antenna on light pole 738' from departure end of runway, 519' right of centerline, 40' AGL/86' MSL. Light pole 1119' from departure end of runway, 353' right of centerline, 31' AGL/77' MSL. Antenna on building 66' from departure end of runway, 471' left of centerline, 33' AGL/69' MSL.

HUNTSVILLE, TX

HUNTSVILLE MUNI

DEPARTURE PROCEDURE: **Rwy 18**, climb runway heading to 700 before turning.

JACKSONVILLE, TX

CHEROKEE COUNTY

DEPARTURE PROCEDURE: **Rwy 14**, climb via heading 135° to 1200 before proceeding on course.

JASPER, TX

JASPER COUNTY-BELL FIELD (JAS)
ORIG 09239 (FAA)

NOTE: **Rwy 18**, trees beginning 2081' from DER, 118' left of centerline, up to 100' AGL/327' MSL. Trees beginning 690' from DER, 87' right of centerline, up to 100' AGL/329' MSL. **Rwy 36**, hangar 320' from DER, 504' left of centerline, 27' AGL/236' MSL. Trees beginning 534' from DER, 139' left of centerline, up to 100' AGL/329' MSL. Pole 1968' from DER, 409' left of centerline, 33' AGL/262' MSL. Bush 94' from DER, 476' right of centerline, 8' AGL/217' MSL. Trees beginning 514' from DER, 6' right of centerline, up to 100' AGL/354' MSL. Hangar 1176' from DER, 675' right of centerline, 30' AGL/249' MSL. Tower 1246' from DER, 611' right of centerline, 40' AGL/258' MSL.

KOUNTZE/SILSBEE, TX

HAWTHORNE FIELD (45R)
ORIG 08045 (FAA)

NOTE: **Rwy 13**, Terrain 3' from departure end of runway, 81' right of centerline, 0' AGL/69' MSL. Trees beginning 64' from departure end of runway, 277' right of centerline, up to 50' AGL/119' MSL. Tree 111' from departure end of runway, 516' left of centerline, 50' AGL/124' MSL. Terrain 172' from departure end of runway, 119' left of centerline, 0' AGL/74' MSL. **Rwy 31**, Terrain 109' from departure end of runway, 134' left of centerline, 0' AGL/74' MSL. Tree 536' from departure end of runway, 457' right of centerline, 50' AGL/114' MSL.

LA GRANGE, TX

FAYETTE RGNL AIR CENTER (3T5)
ORIG 08157 (FAA)

NOTE: **Rwy 16**, tree 140' from departure end of runway, 276' right of centerline, 100' AGL/432' MSL. Tree 612' from departure end of runway, 551' left of centerline, 100' AGL/422' MSL. Road with vehicle 942' from departure end of runway, 667' left of centerline, 15' AGL/350' MSL.

LA PORTE, TX

LA PORTE MUNI (T41)
AMDT 5 10210 (FAA)

DEPARTURE PROCEDURE: **Rwy 12**, climb heading 121° to 500 before turning right. **Rwy 30**, climb heading 301° to 700 before turning right.

NOTE: **Rwy 12**, trees and poles beginning 128' from DER, 42' left of centerline, up to 50' AGL/74' MSL. Trees and poles beginning 131' from DER, 114' right of centerline, up to 39' AGL/63' MSL. Chimney 676' from DER, 412' right of centerline, 31' AGL/55' MSL. **Rwy 23**, trees beginning 1320' from DER, 43' left of centerline, up to 63' AGL/87' MSL. Hangars beginning 233' from DER, 288' right of centerline, up to 35' AGL/59' MSL. Vehicle on road, 594' from DER, 513' left of centerline, 15' AGL/39' MSL. Trees 1010' from DER, 1010' right of centerline, up to 63' AGL/87' MSL. **Rwy 30**, trees and poles beginning 114' from DER, 67' left of centerline, up to 63' AGL/87' MSL. Buildings 335' from DER, 356' left of centerline, 25' AGL/50' MSL. Trees and poles beginning 44' from DER, 35' right of centerline, up to 52' AGL/76' MSL.

31 MAY 2012 to 28 JUN 2012

31 MAY 2012 to 28 JUN 2012

12152

TAKE-OFF MINIMUMS AND (OBSTACLE) DEPARTURE PROCEDURES

TAKE-OFF MINIMUMS AND (OBSTACLE) DEPARTURE PROCEDURES

12152

LIBERTY, TX

LIBERTY MUNI (T78)

ORIG-A 11069 (FAA)

TAKE-OFF MINIMUMS: **Rwys 16, 34**, 2000-3 or std. with a min. climb of 270' per NM to 2100.DEPARTURE PROCEDURE: **Rwy 16**, climb heading161° to 2700 before turning left. **Rwy 34**, climb heading

341° to 2700 before turning right.

LIVINGSTON, TX

LIVINGSTON MUNI (00R)

ORIG 11125 (FAA)

DEPARTURE PROCEDURE: **Rwy 12**, climb heading125° to 1700 before proceeding on course. **Rwy 30**,

climb heading 305° to 800 before turning south.

NOTE: **Rwy 12**, trees beginning at DER, right and leftof centerline, up to 100' AGL/249' MSL. **Rwy 30**,

vehicle on road 10' from DER, 492' right of centerline,

10' AGL/159' MSL. Trees beginning 260' from DER,

304' right of centerline, up to 100' AGL/249' MSL.

LUFKIN, TX

ANGELINA COUNTY

NOTE: **Rwy 7**, multiple trees and terrain beginning 75'

from departure end of runway, 39' left of centerline, up to

85' AGL/381' MSL. Multiple trees beginning 148' from

departure end of runway, 334' right of centerline, up to

75' AGL/371' MSL. **Rwy 15**, multiple trees beginning

261' from departure end of runway, 142' right of

centerline, up to 53' AGL/327' MSL. Multiple trees and

terrain beginning 21' from departure end of runway, 146'

left of centerline, up to 53' AGL/327' MSL. **Rwy 25**,

multiple trees beginning 1767' from departure end of

runway, 283' right of centerline, up to 78' AGL/362' MSL.

Multiple trees beginning 1366' from departure end of

runway, 145' left of centerline, up to 69' AGL/353' MSL.

Rwy 33, multiple trees and pole beginning 289' from

departure end of runway, 247' right of centerline, up to

71' AGL/360' MSL. Multiple trees and road beginning

574' from departure end of runway, 4' left of centerline,

up to 74' AGL/363' MSL.

MADISONVILLE, TX

MADISONVILLE MUNI (51R)

ORIG 12152 (FAA)

NOTE: **Rwy 18**, multiple trees and power poles

beginning at DER, 179' right of centerline, up to 50'

AGL/310' MSL. Multiple trees and power poles

beginning at DER, 200' left of centerline, up to 50' AGL/

309' MSL. **Rwy 36**, multiple trees and power poles

beginning 99' from DER, 50' left of centerline, up to 50'

AGL/341' MSL. Multiple trees beginning 50' from DER,

75' right of centerline, up to 50' AGL/346' MSL.

MEXIA, TX

MEXIA-LIMESTONE CO (LXY)

ORIG 11125 (FAA)

TAKE-OFF MINIMUMS: **Rwy 36**, 300-2¼ or std. w/min. climb of 212' per NM to 1000, or alternatively, with standard takeoff minimums and a normal 200' per NM climb gradient, takeoff must occur no later than 1600' prior to DER.NOTE: **Rwy 18**, vehicles on road beginning 202' from DER, 400' left of centerline, up to 15' AGL/554' MSL. Tree 419' from DER, 292' right of centerline, up to 80' AGL/619' MSL.**Rwy 36**, trees beginning 179' from DER, 382' right of centerline, up to 80' AGL/619' MSL. Trees beginning 391' from DER, 315' left of centerline, up to 80' AGL/629' MSL.

NACOGDOCHES, TX

A. L. MANGHAM JR. RGNL (OCH)

AMDT 2 12152 (FAA)

DEPARTURE PROCEDURE: **Rwy 36**, climb heading 359° to 1000 before turning right.NOTE: **Rwy 18**, trees 47' from DER, 503' left of centerline, 67'

AGL/397' MSL. Trees 1227' from DER, 580' left of centerline,

52' AGL/382' MSL. Trees 2234' from DER, 939' right of

centerline, 71' AGL/431' MSL. **Rwy 36**, trees 252' from DER,

485' left of centerline, 81' AGL/401' MSL. Trees 792' from

DER, 513' left of centerline, 87' AGL/447' MSL. Trees

beginning 1957' from DER, 23' left of centerline, up to 70'

AGL/470' MSL. Trees 207' from DER, 492' right of centerline,

58' AGL/388' MSL. Multiple OL's and trees beginning 661'

from DER, 2' right of centerline, up to 74' AGL/434' MSL.

Multiple trees beginning 2290' from DER, 316' right of

centerline, up to 87' AGL/487' MSL.

NAVASOTA, TX

NAVASOTA MUNI

DEPARTURE PROCEDURE: **Rwy 35**, climb runway heading to 2100 before turning eastbound.

ORANGE, TX

ORANGE COUNTY (ORG)

ORIG 09295 (FAA)

TAKE-OFF MINIMUMS: **Rwy 4**, 400-1¼ or std. w/min. climb of 425' per NM to 500. **Rwys 13, 31**, NA-Environmental.NOTE: **Rwy 4**, trees beginning 893' from DER, 513' right of centerline, up to 30' AGL/87' MSL. Trees beginning 1856' from DER, 550' left of centerline, up to 30' AGL/66' MSL.

Transmission poles beginning 2518' from DER, left and right

of centerline, up to 73' AGL/83' MSL. Tower 6401' from DER,

1900' left of centerline, 283' AGL/298' MSL. **Rwy 22**, trees

beginning at DER, left and right of centerline, up to 30' AGL/

39' MSL.

12152

TAKE-OFF MINIMUMS AND (OBSTACLE) DEPARTURE PROCEDURES

12152

PALACIOS, TX

PALACIOS MUNI (PSX)

ORIG 11293 (FAA)

DEPARTURE PROCEDURE: **Rwy 8**, climbing right turn heading 120° to 1800 before proceeding on course. **Rwy 13**, climb heading 127° to 1100 before turning left. **Rwy 35**, climb heading 352° to 1100 before turning right.

NOTE: **Rwy 31**, bush 20' from DER, 296' right of centerline, 6' AGL/16' MSL.

PALESTINE, TX

PALESTINE MUNI

TAKE-OFF MINIMUMS: **Rwy 9**, std. with a min. climb of 313' per NM to 1200, or 600-3 for climb in visual conditions.

DEPARTURE PROCEDURE: **Rwy 9**, for climb in visual conditions: cross Palestine Municipal Airport at or above 1200.

NOTE: **Rwy 9**, multiple trees and terrain beginning 1.5 NM from departure end of runway, 2404' left of centerline, up to 100' AGL/739' MSL. Terrain 1.6 NM from departure end of runway, 1545' right of centerline, 601' MSL.

VICTORIA, TX

VICTORIA RGNL (VCT)

AMDT 1 12152 (FAA)

TAKE-OFF MINIMUMS: **Rwys 6, 24**, NA - environmental.

NOTE: **Rwy 13R**, poles, railroad, and tower beginning 796' from DER, 61' right of centerline, up to 59' AGL/161' MSL. Hopper and tank beginning 1124' from DER, 407' left of centerline, up to 32' AGL/134' MSL.

Rwy 18, DME on building 588' from DER, 414' left centerline, 15' AGL/118' MSL. **Rwy 36**, bush 104' from DER, 165' right of centerline, 10' AGL/116' MSL.

WHARTON, TX

WHARTON RGNL (ARM)

ORIG 09239 (FAA)

NOTE: **Rwy 32**, vehicle on roads beginning 26' from DER, 312' right of centerline, up to 17' AGL/113' MSL.

Buildings beginning 40' from DER, 338' right of centerline, up to 26' AGL/125' MSL. Poles beginning 140' from DER, 467' right of centerline, up to 43' AGL/142' MSL. Tree 828' from DER, 509' right of centerline, 28' AGL/127' MSL. Fence 24' from DER, 288' left of centerline, 4' AGL/103' MSL. Tree 1147' from DER, 425' left of centerline, 41' AGL/140' MSL.

31 MAY 2012 to 28 JUN 2012

31 MAY 2012 to 28 JUN 2012

12152