

AUSTIN, TEXAS

AL-6677 (FAA)

RNAV (GPS) RWY 16

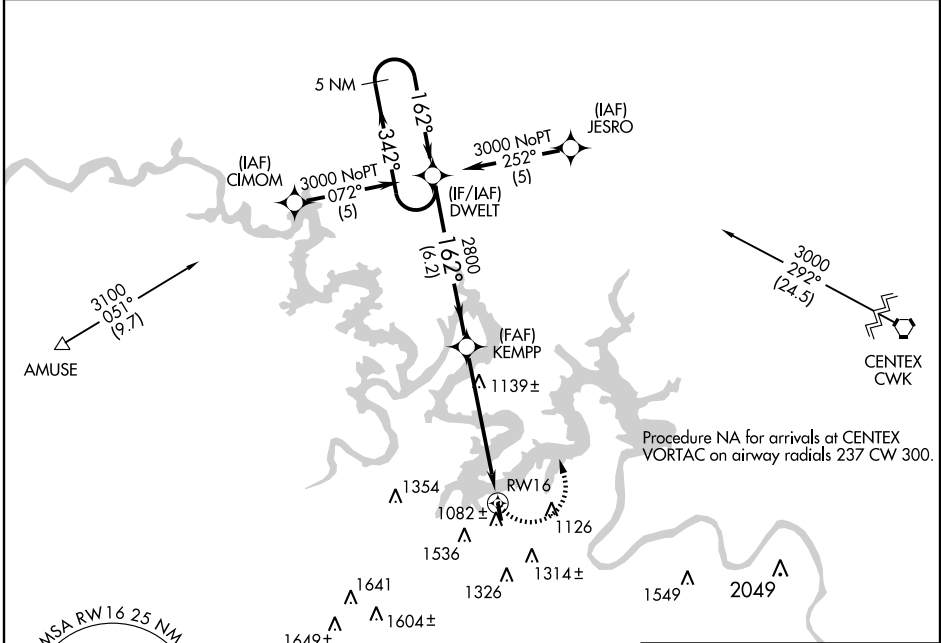
AUSTIN/ LAKEWAY AIRPARK (3R.9)

APP CRS	Rwy Idg	3148
162°	TDZE	903
	Apt Elev	909

▼ Use Georgetown Muni altimeter setting; if not received, use Austin-Bergstrom Intl altimeter setting and increase all MDAs 40 feet. Procedure NA at night.
▲ NA DME/DME RNP-0.3 NA. Visibility reduction by helicopters NA.

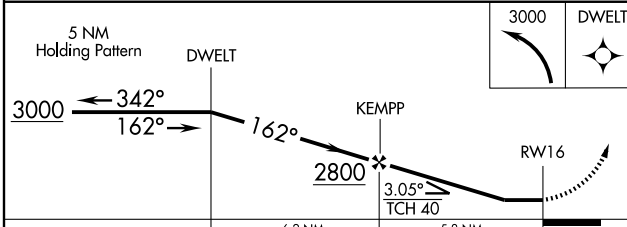
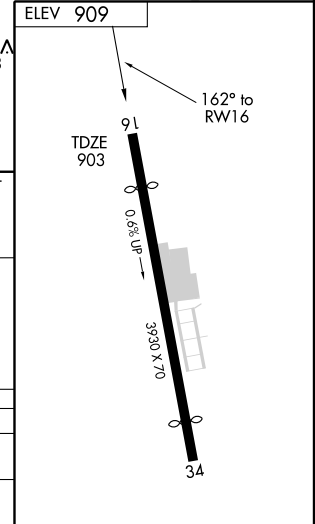
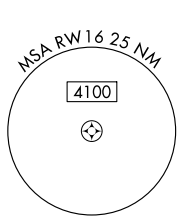
MISSED APPROACH: Climbing left turn to 3000 direct DWELT and hold.

GEORGETOWN AWOS-3 118.6	AUSTIN APP CON 119.0 370.85	UNICOM 123.0 (CTAF)
-----------------------------------	---------------------------------------	-------------------------------



SC-3, 31 MAY 2012 to 28 JUN 2012

SC-3, 31 MAY 2012 to 28 JUN 2012



CATEGORY	A	B	C	D
LNVA MDA	1680-1 777 (800-1)	1680-1¼ 777 (800-1¼)	1680-2¼ 777 (800-2¼)	NA
CIRCLING	1680-1 771 (800-1)	1980-1½ 1071 (1100-1½)	1980-3 1071 (1100-3)	NA

AUSTIN, TEXAS
Orig 10154

30°21'N-98°00'W

AUSTIN/ LAKEWAY AIRPARK (3R.9) RNAV (GPS) RWY 16

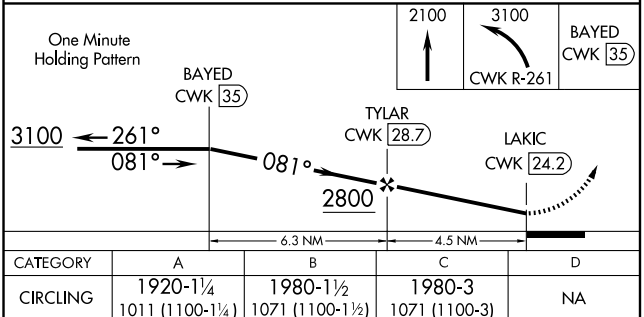
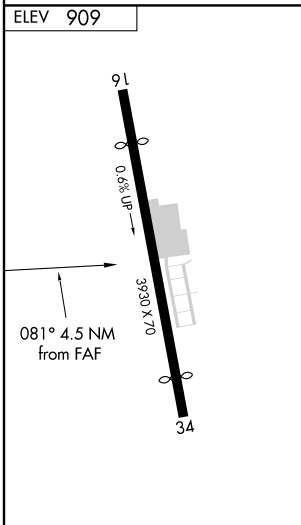
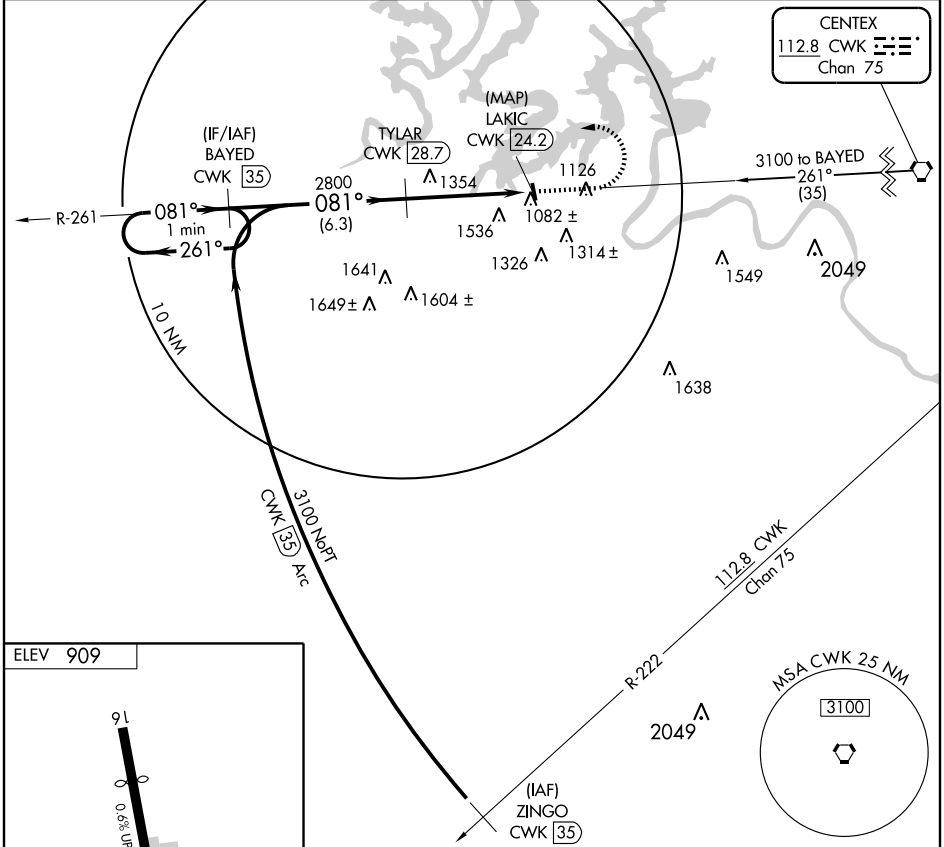
VORTAC CWK 112.8 Chan 75	APP CRS 081°	Rwy Idg TDZE Apt Elev	N/A N/A 909
---------------------------------------	------------------------	-----------------------------	--

VOR/DME-A
AUSTIN/ LAKEWAY AIRPARK (3R.9)

Use Georgetown Muni altimeter setting; if not received, use Austin-Bergstrom Intl altimeter setting and increase all MDAs 40 feet. Procedure NA at night.

MISSED APPROACH: Climb to 2100 then climbing left turn to 3100 via CWK VORTAC R-261 to BAYED/35 DME and hold.

GEORGETOWN AWOS-3 118.6	AUSTIN APP CON 119.0 370.85	UNICOM 123.0 (CTAF)
-----------------------------------	---------------------------------------	-------------------------------



SC-3, 31 MAY 2012 to 28 JUN 2012

SC-3, 31 MAY 2012 to 28 JUN 2012