

LOC/DME I-VVM 110.9 Chan 46	APP CRS 249°	Rwy Idg TDZE Apt Elev	5500 689 689
--	------------------------	-----------------------------	---

LOC RWY 25

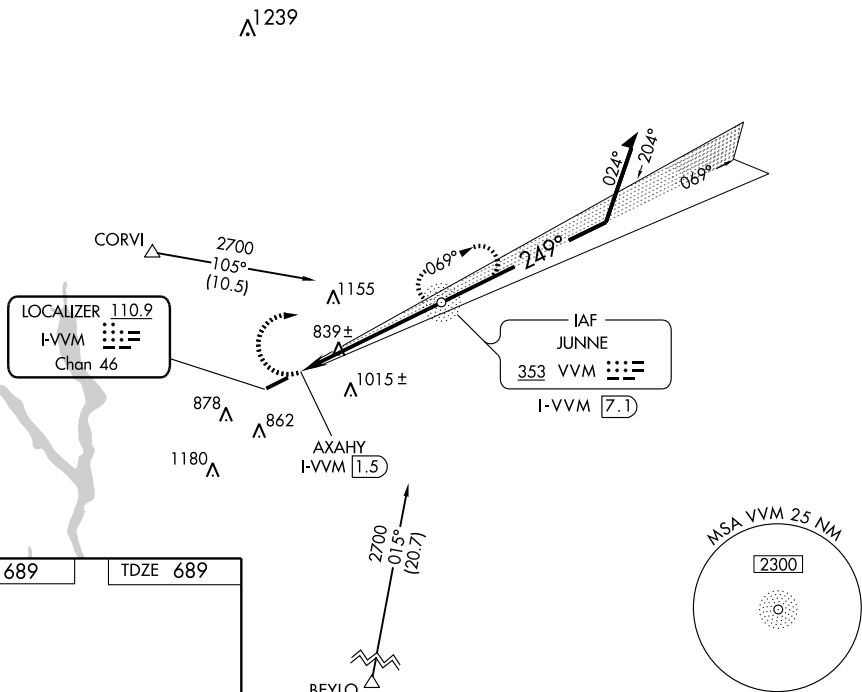
GREENSBORO/GREENE COUNTY RGNL (3J7)

▽ Visibility reduction by helicopters NA. When local altimeter setting not received, use Athens altimeter setting and increase all MDA 80 feet and increase S-25 Cat D visibility and Circling Cat C visibility ¼ mile. Localizer unusable ½ mile inbound.

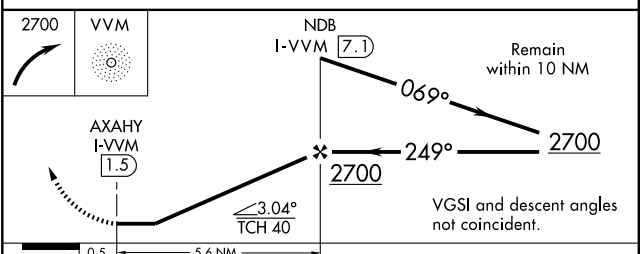
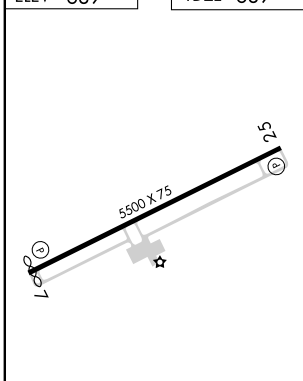
▲ MISSED APPROACH: Climbing right turn to 2700 direct VVM NDB and hold.

AWOS-3 124.525	ATLANTA APP CON * 132.475 291.1	GCO 121.725	UNICOM 122.8 (CTAF) ①
--------------------------	---	-----------------------	---------------------------------

ADF REQUIRED



ELEV 689	TDZE 689
----------	----------



	CATEGORY A		CATEGORY B		CATEGORY C		CATEGORY D	
S-25	1100-1	411 (500-1)	1100-1¼	411 (500-1¼)				
CIRCLING	1220-1	531 (600-1)	1220-1½	531 (600-1½)	1240-2	551 (600-2)		

LOC RWY 25

SE-4, 31 MAY 2012 to 28 JUN 2012

SE-4, 31 MAY 2012 to 28 JUN 2012

WAAS CH 70616 W25A	APP CRS 249°	Rwy Idg TDZE Apt Elev	5500 689 689
--	------------------------	-----------------------------	---

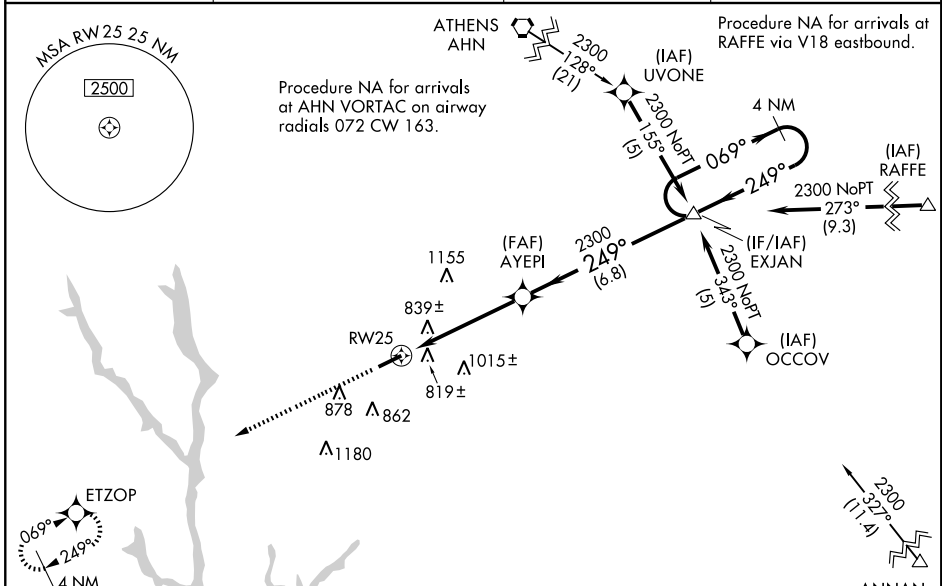
RNAV (GPS) RWY 25

GREENSBORO/ GREENE COUNTY RGNL (3J7)

⚠ Baro-VNAV NA when using Athens altimeter setting. For uncompensated Baro-VNAV systems, LNAV/VNAV below -16°C (4°F) or above 47°C (116°F). DME/DME RNP-0.3 NA. Visibility reduction by helicopters NA. When local altimeter setting not received use Athens altimeter setting and increase all DA 70 feet and all MDA 80 feet; increase LPV all Cats and LNAV/VNAV all Cats visibility ¼ mile, and LNAV Cat D and Circling Cat C visibility ¼ mile.

MISSED APPROACH: Climb to 2300 direct ETZOP and hold.

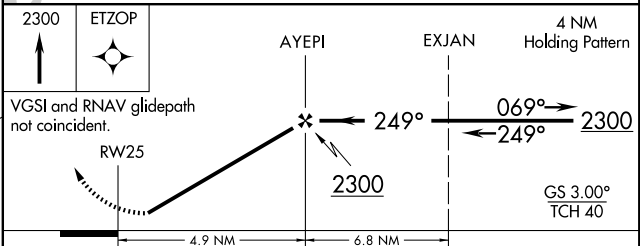
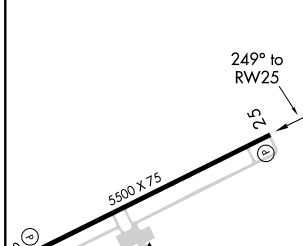
AWOS-3 124.525	ATLANTA APP CON * 132.475 291.1	GCO 121.725	UNICOM 122.8(CTAF)
--------------------------	---	-----------------------	------------------------------



SE-4, 31 MAY 2012 to 28 JUN 2012

SE-4, 31 MAY 2012 to 28 JUN 2012

ELEV 689	TDZE 689
-----------------	-----------------



CATEGORY	A	B	C	D
LPV DA	978-1 289 (300-1)			
LNAV/VNAV DA	1123-1½ 434 (500-1½)			
LNAV MDA	1100-1 411 (500-1)	1100-1¼ 411 (500-1¼)		
CIRCLING	1220-1 531 (600-1)	1220-1½ 531 (600-1½)	1240-2 551 (600-2)	

APP CRS	Rwy Idg	5400
069°	TDZE	678
	Apt Elev	689

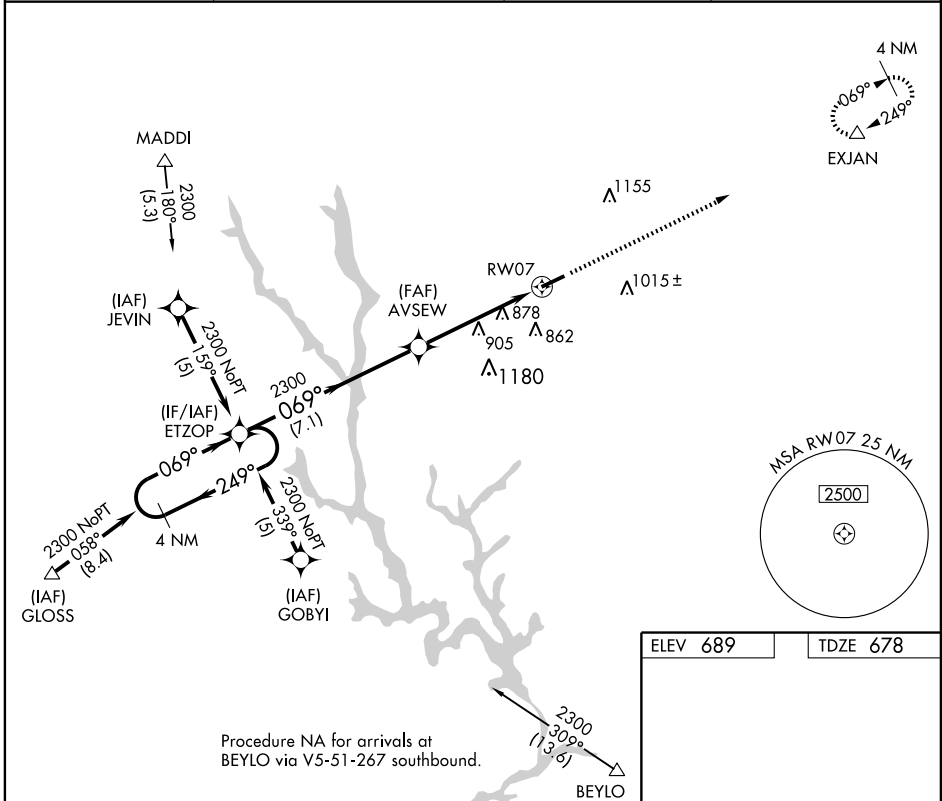
RNAV (GPS) RWY 7

GREENSBORO/ GREENE COUNTY RGNL (3J7)

⚠ DME/DME RNP-0.3 NA. Visibility reduction by helicopters NA.
⚠ When local altimeter setting not received, use Athens altimeter setting and increase all MDA 80 feet; increase LNAV Cat C and D visibility and Circling Cat C visibility ¼ mile.

MISSED APPROACH: Climb to 2300 direct EXJAN and hold.

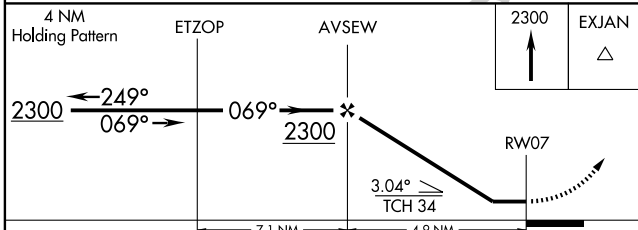
AWOS-3 124.525	ATLANTA APP CON ★ 132.475 219.1	GCO 121.725	UNICOM 122.8(CTAF) 0
--------------------------	---	-----------------------	--------------------------------



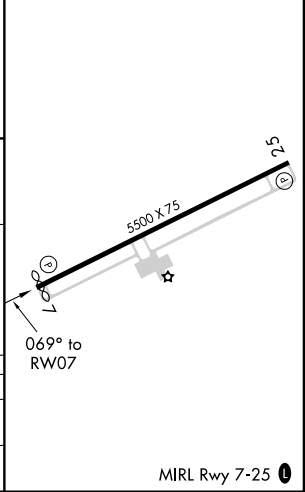
SE-4, 31 MAY 2012 to 28 JUN 2012

SE-4, 31 MAY 2012 to 28 JUN 2012

Procedure NA for arrivals at BEYLO via V5-51-267 southbound.



ELEV 689	TDZE 678
----------	----------



CATEGORY	A	B	C	D
LNAV MDA	1160-1	482 (500-1)	1160-1½ 482 (500-1½)	1160-1½ 482 (500-1½)
CIRCLING	1220-1	531 (600-1)	1220-1½ 531 (600-1½)	1240-2 551 (600-2)

MIRL Rwy 7-25 0

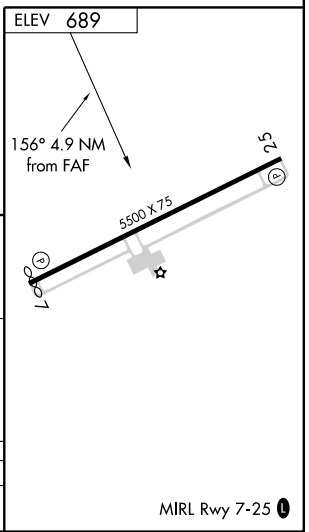
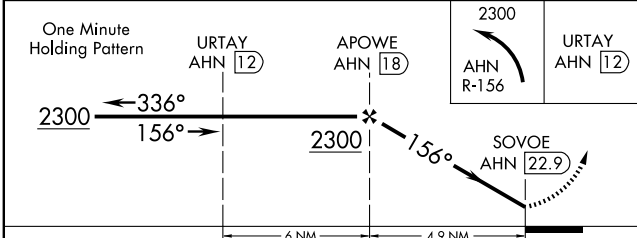
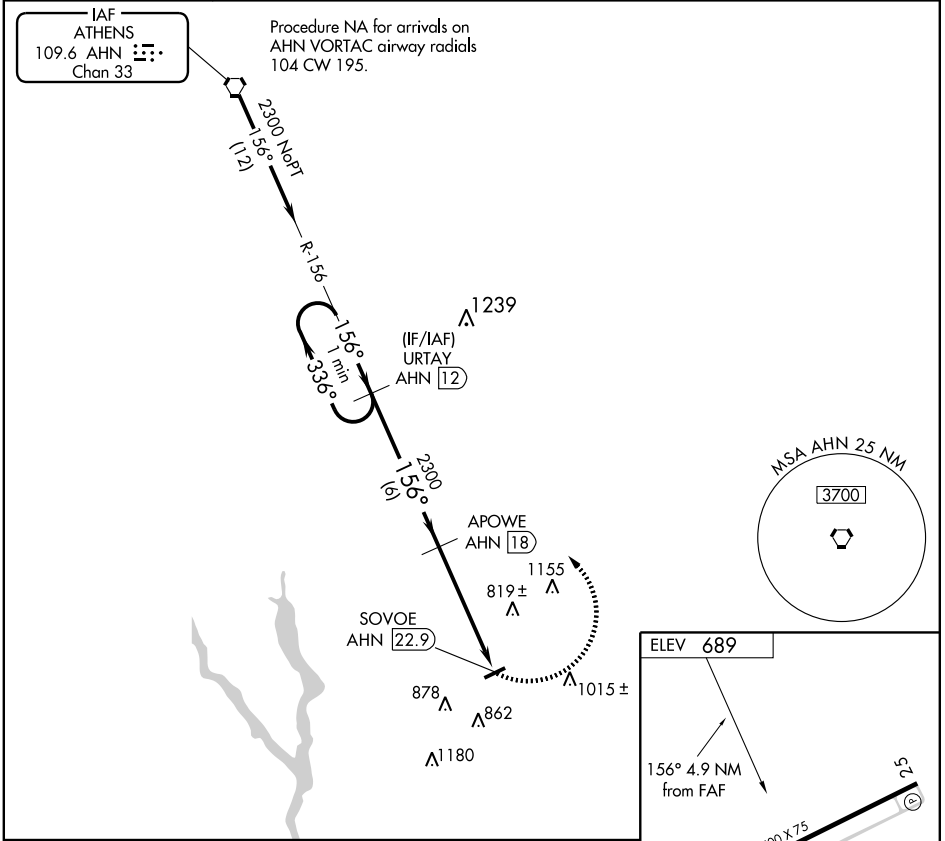
VORTAC AHN 109.6 Chan 33	APP CRS 156°	Rwy Idg TDZE Apt Elev 689	N/A N/A 689
--	------------------------	---	--

VOR/DME-B
GREENSBORO/GREENE COUNTY RGNL (3J7)

⚠ Visibility reduction by helicopters NA. When local altimeter setting not received use Athens altimeter setting and increase all MDA 80 feet and Circling Cat C visibility ¼ mile.

MISSED APPROACH: Climbing left turn to 2300 via AHN VORTAC R-156 to URTAY/AHN 12 DME and hold.

AWOS-3 124.525	ATLANTA APP CON * 132.475 291.1	GCO 121.725	UNICOM 122.8 (CTAF)
--------------------------	---	-----------------------	-------------------------------



CATEGORY	A	B	C	D
CIRCLING	1220-1 531 (600-1)	1220-1¼ 531 (600-1¼)	1220-1½ 531 (600-1½)	1240-2 551 (600-2)

SE-4, 31 MAY 2012 to 28 JUN 2012

SE-4, 31 MAY 2012 to 28 JUN 2012