

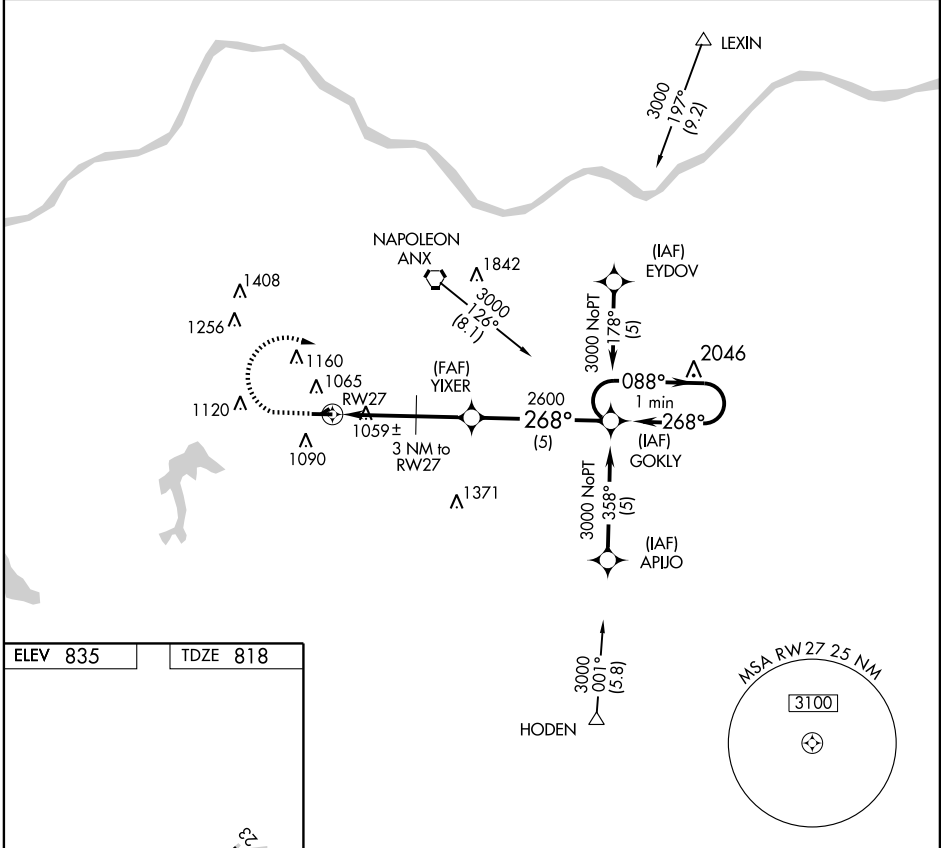
GPS RWY 27

GRAIN VALLEY/EAST KANSAS CITY (3GV)

APP CRS 268°	Rwy Idg 4506
	TDZE 818
	Apt Elev 835

NA Use Charles B. Wheeler Downtown Airport altimeter setting. MISSED APPROACH: Climb to 1600 then climbing right turn to 3000 direct GOKLY WP and hold.

KANSAS CITY APP CON 118.4 294.7	CLNC DEL 121.3	UNICOM 122.8 (CTAF) 0
---	--------------------------	---------------------------------



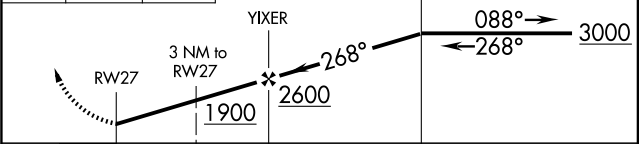
NC-3, 31 MAY 2012 to 28 JUN 2012

NC-3, 31 MAY 2012 to 28 JUN 2012

ELEV 835	TDZE 818
----------	----------



1600	3000	GOKLY	One Minute Holding Pattern
------	------	-------	----------------------------



CATEGORY	A	B	C	D
S-27	1380-1	562 (600-1)		NA
CIRCLING	1460-1	625 (700-1)		NA

GPS RWY 27

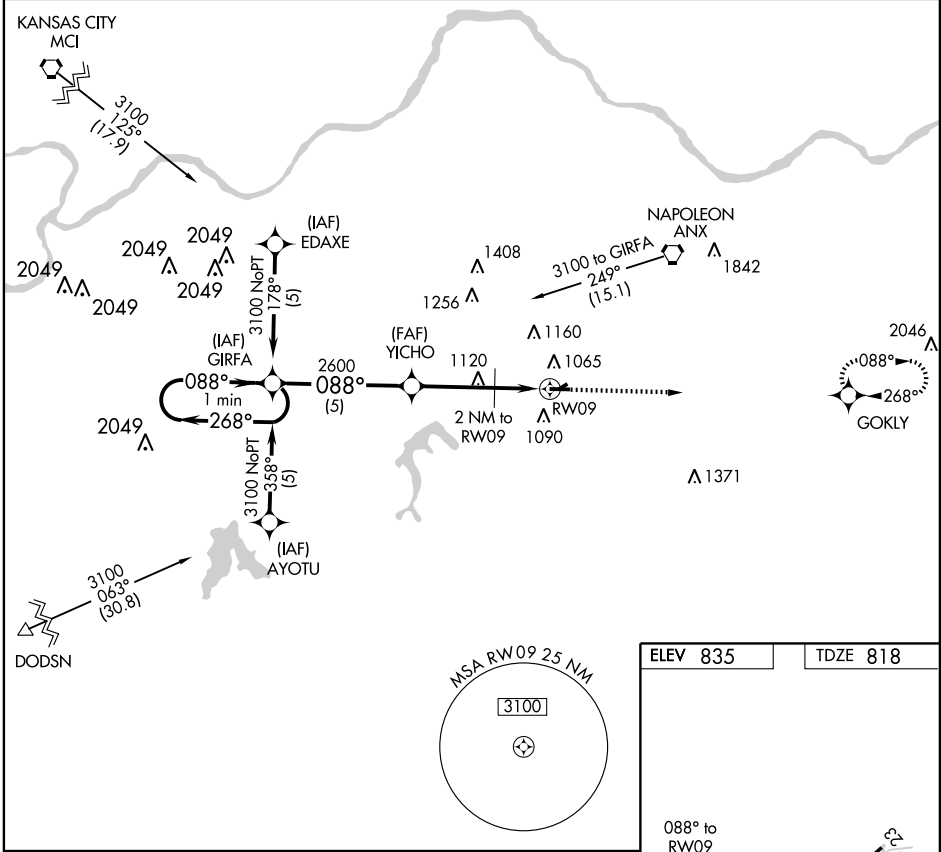
GPS RWY 9

GRAIN VALLEY/ EAST KANSAS CITY (3GV)

APP CRS	Rwy Idg	4206
088°	TDZE	818
	Apt Elev	835

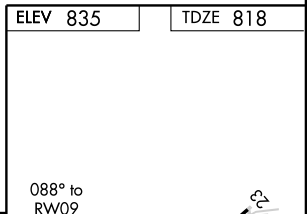
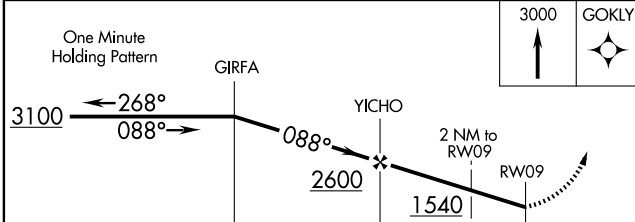
NA Use Charles B. Wheeler Downtown Airport altimeter setting. MISSED APPROACH: Climb to 3000 direct GOKLY WP and hold.

KANSAS CITY APP CON 118.4 294.7	CLNC DEL 121.3	UNICOM 122.8 (CTAF) 0
---	--------------------------	---------------------------------



NC-3, 31 MAY 2012 to 28 JUN 2012

NC-3, 31 MAY 2012 to 28 JUN 2012



CATEGORY	A	B	C	D
S-9	1400-1	582 (600-1)		NA
CIRCLING	1460-1	625 (700-1)		NA

REIL Rwy 9 **0**
MIRL Rwy 9-27 **0**

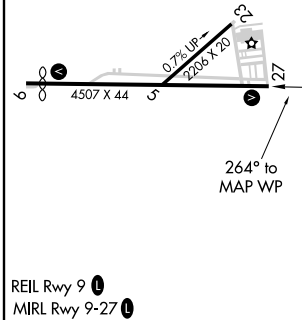
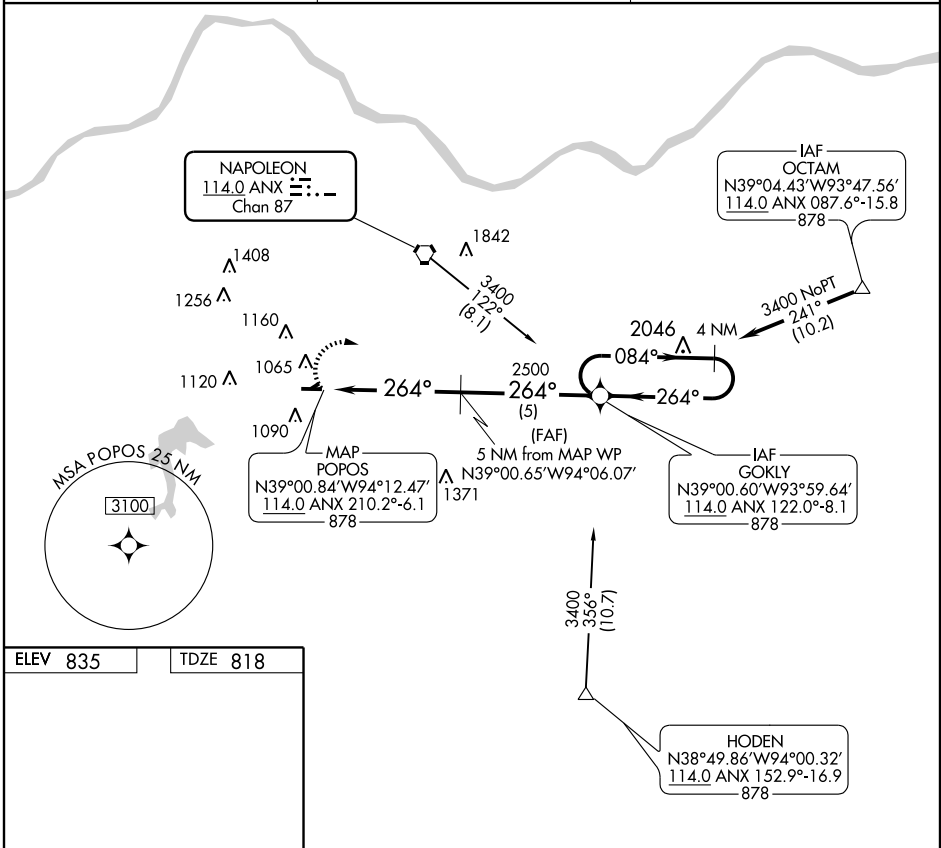
VORTAC ANX 114.0 Chan 87	APP CRS 264°	Rwy Idg TDZE Apt Elev	4506 818 835
--	------------------------	-----------------------------	---

VOR/DME RNAV RWY 27

GRAIN VALLEY/EAST KANSAS CITY (3GV)

NA Use Charles B. Wheeler Downtown Airport altimeter setting. MISSED APPROACH: Climbing right turn to 3400 direct GOKLY WP and hold.

KANSAS CITY APP CON 118.4 294.7	CLNC DEL 121.3	UNICOM 122.8 (CTAF)
---	--------------------------	-------------------------------



3400	GOKLY	4 NM Holding Pattern	
5 NM from MAP WP		GOKLY WP	
POPOS MAP WP		5 NM	
2500		3400	
264°		084°	
264°		264°	
CATEGORY	A	B	C
S-27	1420-1	602 (600-1)	NA
CIRCLING	1460-1	625 (700-1)	NA

NC-3, 31 MAY 2012 to 28 JUN 2012

NC-3, 31 MAY 2012 to 28 JUN 2012

GRAIN VALLEY, MISSOURI

AL-5101 (FAA)

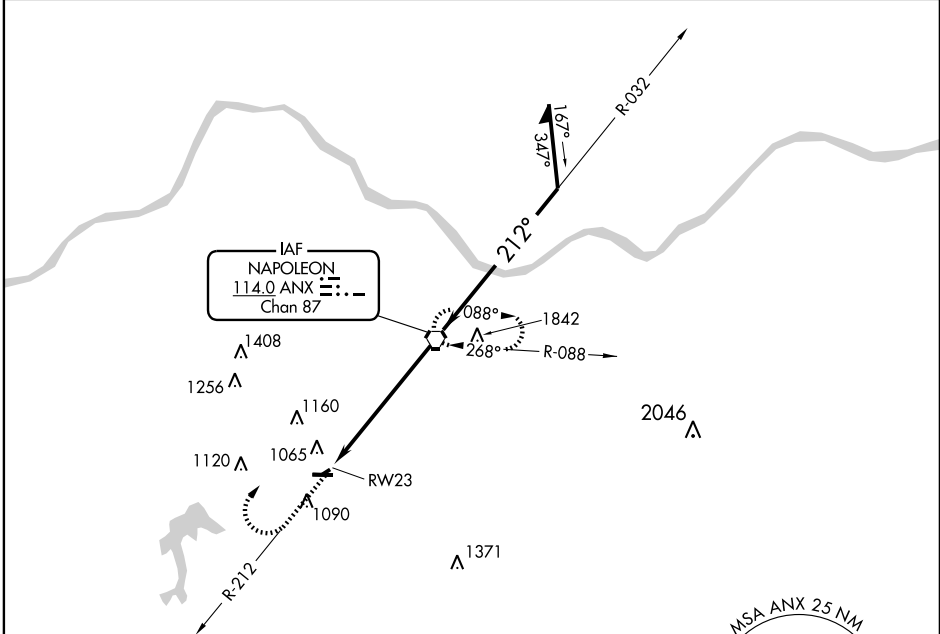
VORTAC ANX 114.0 Chan 87	APP CRS 212°	Rwy Idg TDZE Apt Elev	2206 835 835
--	------------------------	-----------------------------	---

VOR or GPS RWY 23

GRAIN VALLEY/EAST KANSAS CITY (3GV)

NA Use Charles B. Wheeler Downtown Airport altimeter setting. Straight-in minimums Rwy 23 NA at night. MISSED APPROACH: Climb to 1600 via ANX R-212 then climbing right turn to 2900 direct ANX VORTAC and hold.

KANSAS CITY APP CON 118.4 294.7	CLNC DEL 121.3	UNICOM 122.8 (CTAF)
---	--------------------------	-------------------------------



NC-3, 31 MAY 2012 to 28 JUN 2012

NC-3, 31 MAY 2012 to 28 JUN 2012

ELEV 835	TDZE 835
----------	----------

212° 6 NM from FAF

REIL Rwy 9
MIRL Rwy 9-27

FAF to MAP 6 NM					
Knots	60	90	120	150	180
Min:Sec	6:00	4:00	3:00	2:24	2:00

1600	2900	ANX	VORTAC	Remain within 10 NM
↑ ANX R-212	↪	⬇	↘ 032°	↘ 2900
RW23 ANX 6		↘ 212°	↘ 2700	
6 NM				

CATEGORY	A	B	C	D
S-23	1400-1	565 (600-1)		NA
CIRCLING	1460-1	625 (700-1)		NA

GRAIN VALLEY, MISSOURI
Amdt 3A 11293

39°01'N-94°13'W

VOR or GPS RWY 23