

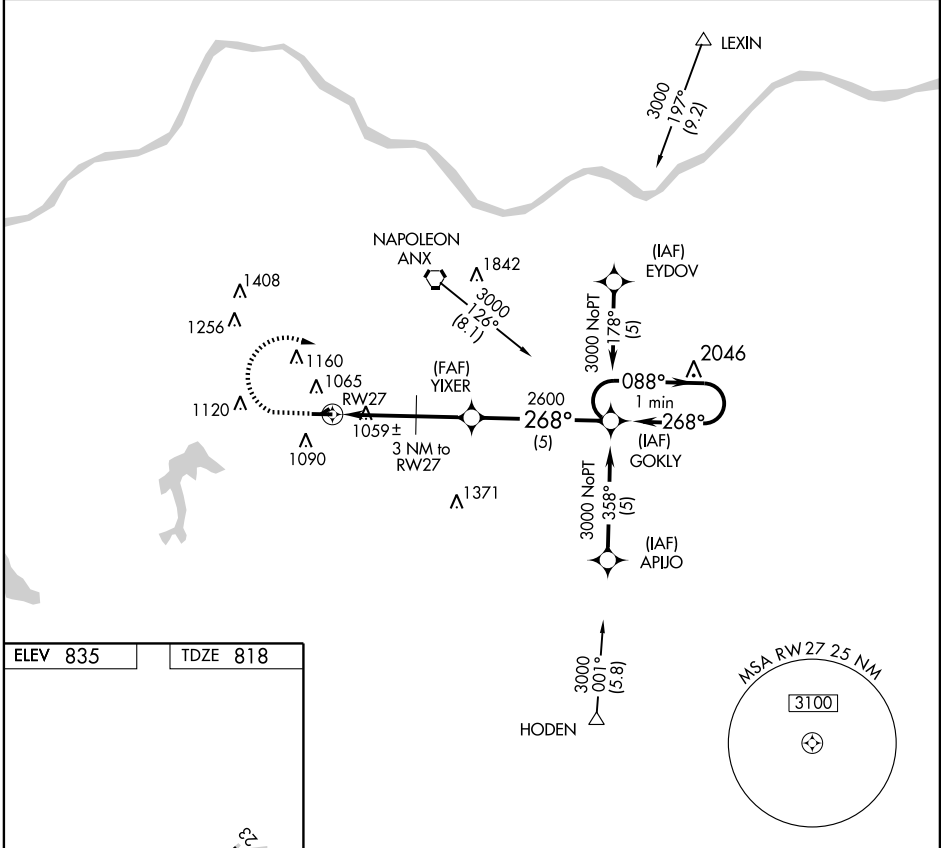
# GPS RWY 27

GRAIN VALLEY/EAST KANSAS CITY (3GV)

APP CRS <b>268°</b>	Rwy Idg <b>4506</b>
	TDZE <b>818</b>
	Apt Elev <b>835</b>

**NA** Use Charles B. Wheeler Downtown Airport altimeter setting. MISSED APPROACH: Climb to 1600 then climbing right turn to 3000 direct GOKLY WP and hold.

KANSAS CITY APP CON <b>118.4 294.7</b>	CLNC DEL <b>121.3</b>	UNICOM <b>122.8 (CTAF) 0</b>
---	--------------------------	---------------------------------



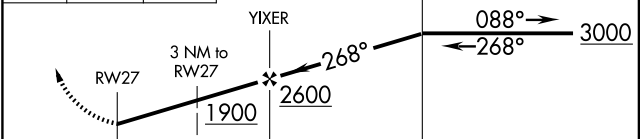
NC-3, 31 MAY 2012 to 28 JUN 2012

NC-3, 31 MAY 2012 to 28 JUN 2012

ELEV 835	TDZE 818
----------	----------



1600	3000	GOKLY	One Minute Holding Pattern
------	------	-------	----------------------------



REIL Rwy 9 **0**  
MIRL Rwy 9-27 **0**

CATEGORY	A	B	C	D
S-27	1380-1	562 (600-1)		NA
CIRCLING	1460-1	625 (700-1)		NA

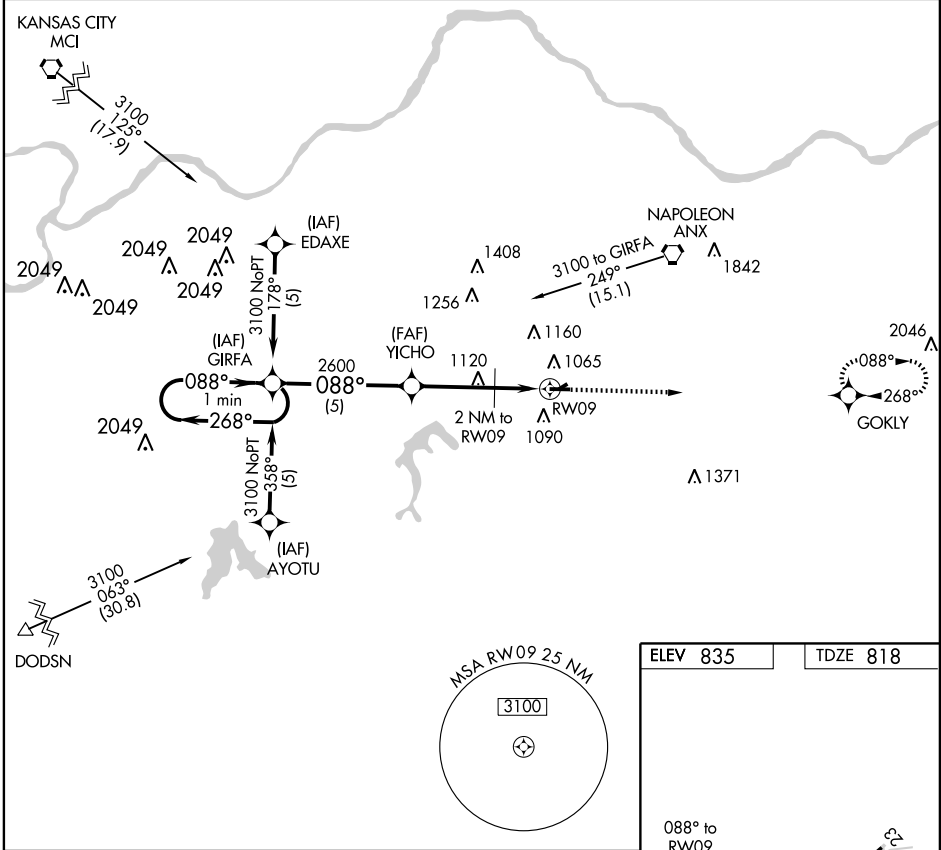
# GPS RWY 9

GRAIN VALLEY/ EAST KANSAS CITY (3GV)

APP CRS	Rwy Idg	<b>4206</b>
<b>088°</b>	TDZE	<b>818</b>
	Apt Elev	<b>835</b>

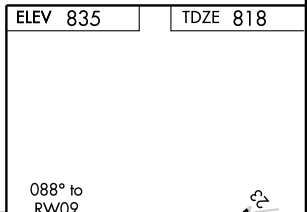
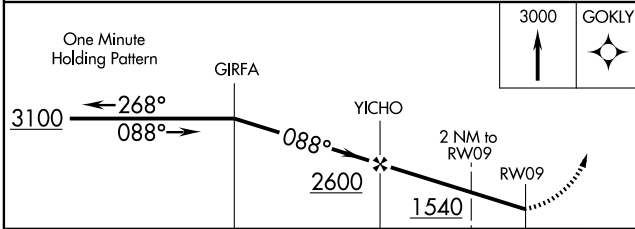
**NA** Use Charles B. Wheeler Downtown Airport altimeter setting. MISSED APPROACH: Climb to 3000 direct GOKLY WP and hold.

KANSAS CITY APP CON <b>118.4 294.7</b>	CLNC DEL <b>121.3</b>	UNICOM <b>122.8 (CTAF) 0</b>
---	--------------------------	---------------------------------



NC-3, 31 MAY 2012 to 28 JUN 2012

NC-3, 31 MAY 2012 to 28 JUN 2012



CATEGORY	A	B	C	D
S-9	1400-1	582 (600-1)		NA
CIRCLING	1460-1	625 (700-1)		NA

REIL Rwy 9 0  
MIRL Rwy 9-27 0

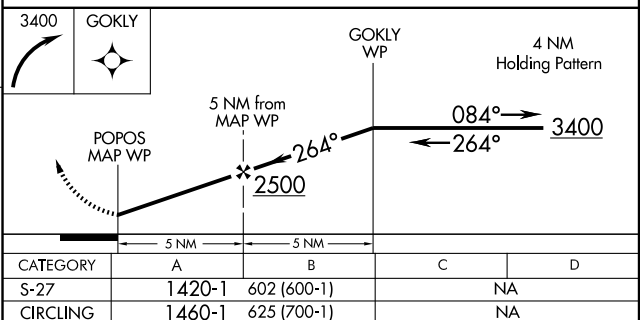
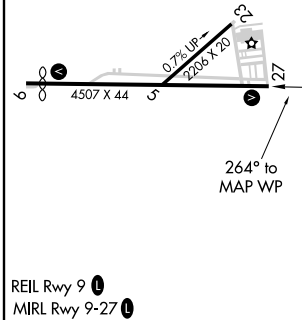
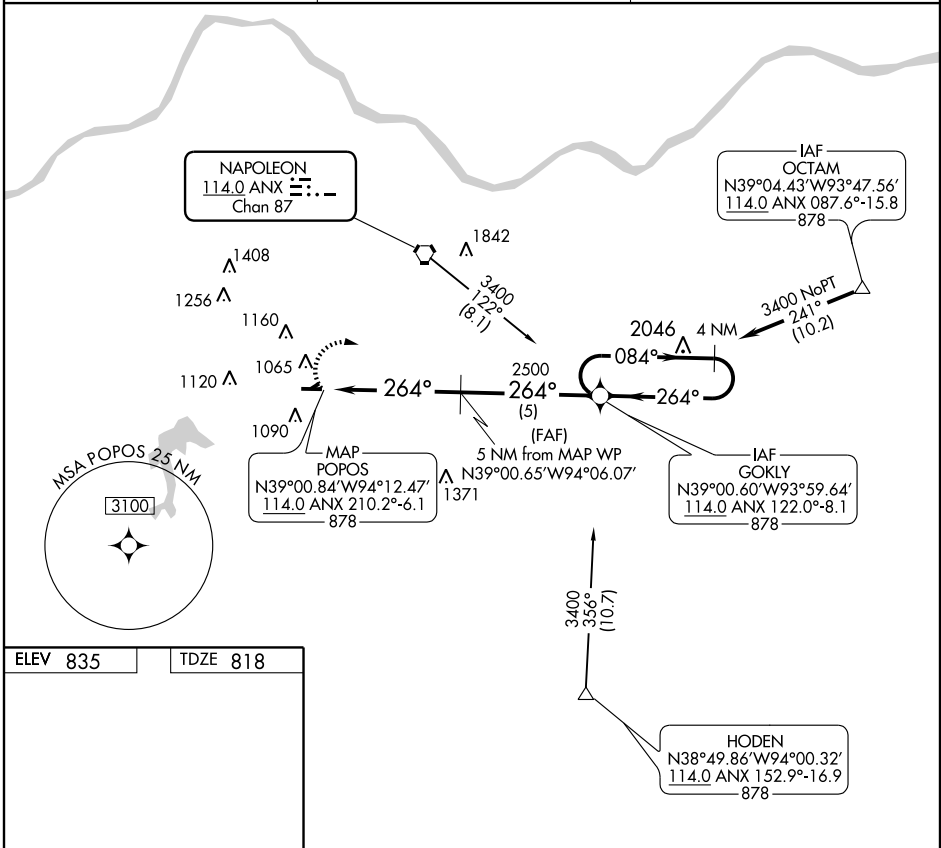
VORTAC ANX <b>114.0</b> Chan <b>87</b>	APP CRS <b>264°</b>	Rwy Idg TDZE Apt Elev	<b>4506</b> <b>818</b> <b>835</b>
--	------------------------	-----------------------------	---

# VOR/DME RNAV RWY 27

GRAIN VALLEY/EAST KANSAS CITY (3GV)

**NA** Use Charles B. Wheeler Downtown Airport altimeter setting. MISSED APPROACH: Climbing right turn to 3400 direct GOKLY WP and hold.

KANSAS CITY APP CON <b>118.4 294.7</b>	CLNC DEL <b>121.3</b>	UNICOM <b>122.8 (CTAF)</b>
---	--------------------------	-------------------------------



NC-3, 31 MAY 2012 to 28 JUN 2012

NC-3, 31 MAY 2012 to 28 JUN 2012

GRAIN VALLEY, MISSOURI

AL-5101 (FAA)

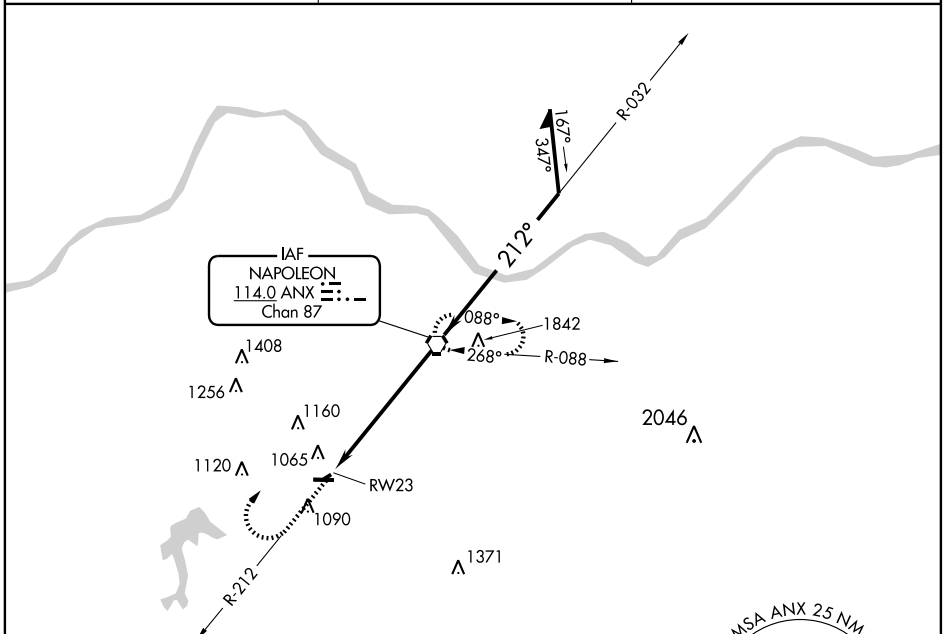
VORTAC ANX <b>114.0</b> Chan <b>87</b>	APP CRS <b>212°</b>	Rwy Idg TDZE <b>835</b> Apt Elev <b>835</b>
--	------------------------	--

# VOR or GPS RWY 23

GRAIN VALLEY/EAST KANSAS CITY (3GV)

**NA** Use Charles B. Wheeler Downtown Airport altimeter setting. Straight-in minimums Rwy 23 NA at night. MISSED APPROACH: Climb to 1600 via ANX R-212 then climbing right turn to 2900 direct ANX VORTAC and hold.

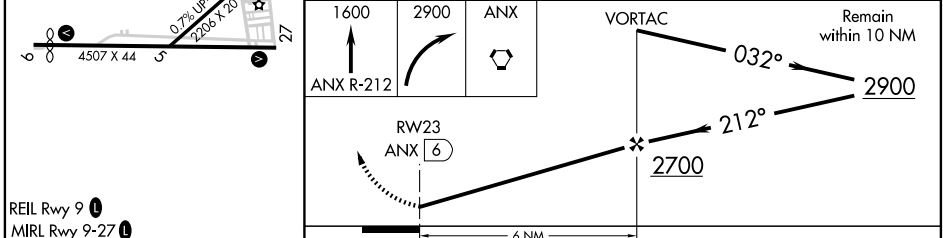
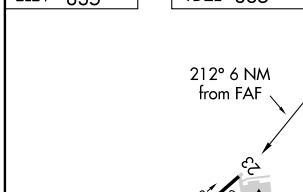
KANSAS CITY APP CON <b>118.4 294.7</b>	CLNC DEL <b>121.3</b>	UNICOM <b>122.8 (CTAF)</b>
---	--------------------------	-------------------------------



NC-3, 31 MAY 2012 to 28 JUN 2012

NC-3, 31 MAY 2012 to 28 JUN 2012

ELEV 835	TDZE 835
----------	----------



REIL Rwy 9  
MIRL Rwy 9-27

FAF to MAP 6 NM					CATEGORY	A	B	C	D
Knots	60	90	120	150	180	S-23	1400-1	565 (600-1)	NA
Min:Sec	6:00	4:00	3:00	2:24	2:00	CIRCLING	1460-1	625 (700-1)	NA

GRAIN VALLEY, MISSOURI  
Amdt 3A 11293

GRAIN VALLEY/EAST KANSAS CITY (3GV)  
39°01'N-94°13'W  
**VOR or GPS RWY 23**