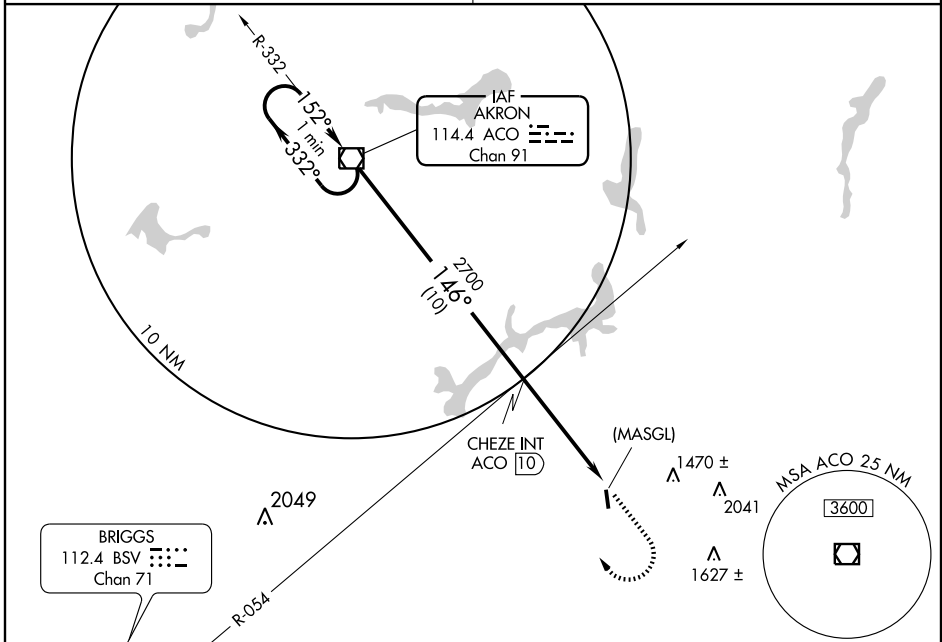


VOR/DME ACO <b>114.4</b> Chan <b>91</b>	APP CRS <b>146°</b>	Rwy Idg <b>2768</b> TDZE <b>1188</b> Apt Elev <b>1188</b>
---	------------------------	---

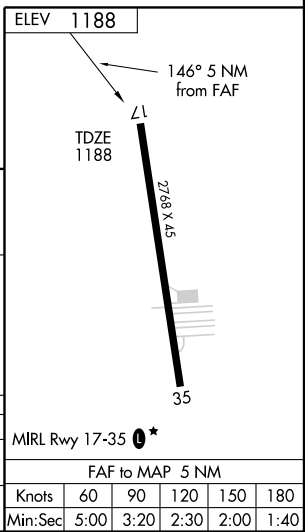
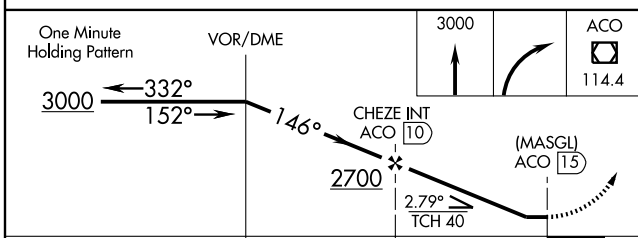
# VOR or GPS RWY 17

SEBRING/ TRI-CITY (3G6)

<p><b>▼</b> Use Akron-Canton altimeter setting.</p> <p><b>▲</b> NA</p>	<p>MISSED APPROACH: Climb to 3000 then right turn direct ACO VOR/DME and hold.</p>
<p><b>AKRON-CANTON APP CON*</b> <b>125.5 371.875</b></p>	<p><b>CTAF 122.9</b></p>



NoPT for Arrivals on ACO VOR/DME Airway Radials 237 CW 332.



CATEGORY	A	B	C	D
S-17	1640-1	452 (500-1)	1640-1½ 452 (500-1½)	NA
CIRCLING	1680-1 492 (500-1)	1700-1 512 (600-1)	1700-1½ 512 (600-1½)	NA

EC-2, 31 MAY 2012 to 28 JUN 2012

EC-2, 31 MAY 2012 to 28 JUN 2012