

|             |          |             |
|-------------|----------|-------------|
| APP CRS     | Rwy Idg  | <b>2697</b> |
| <b>140°</b> | TDZE     | <b>762</b>  |
|             | Apt Elev | <b>773</b>  |

# RNAV (GPS) RWY 14

EPHRAIM-GIBRALTAR (3D2)

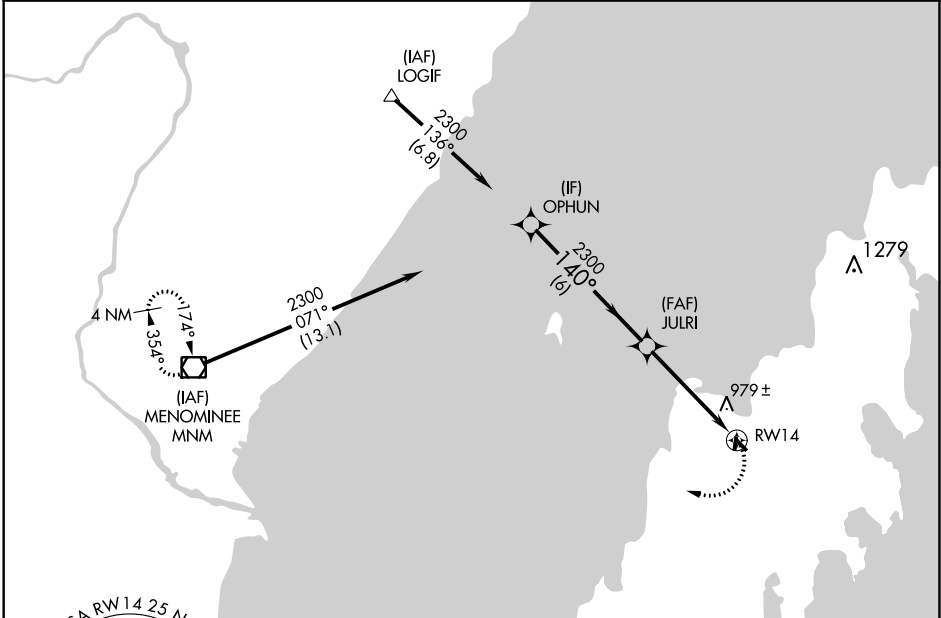
**NA** DME/DME RNP-0.3 NA. Procedure NA at night. Visibility reduction by helicopters NA. Use Door County Cherryland altimeter setting; when not received, use Menominee altimeter setting and increase all MDA 20 feet.

MISSED APPROACH: Climbing right turn to 3000 direct MNM VOR/DME and hold.

AWOS-3PT  
**124.175**

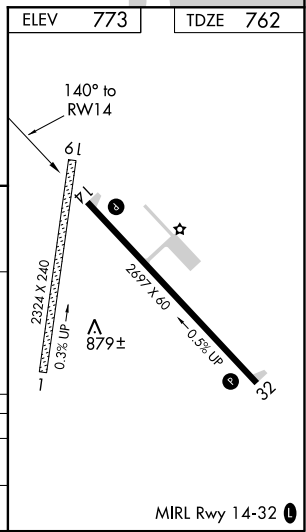
GREEN BAY APP CON★  
**120.3 338.2**

UNICOM  
**123.0 (CTAF) 0**

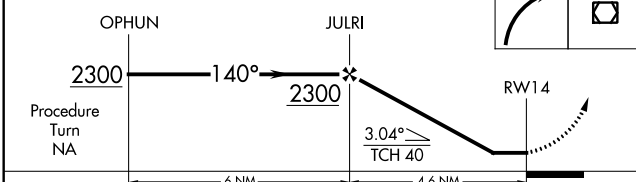
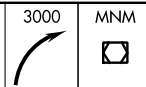


EC-3, 17 AUG 2017 to 14 SEP 2017

EC-3, 17 AUG 2017 to 14 SEP 2017



VGSI and descent angles not coincident (VGSI Angle 3.50/TCH 24).



| CATEGORY | A      | B           | C                       | D  |
|----------|--------|-------------|-------------------------|----|
| RNAV MDA | 1300-1 | 538 (600-1) | 1300-1½<br>538 (600-1½) | NA |
| CIRCLING | 1340-1 | 567 (600-1) | 1340-1½<br>567 (600-1½) | NA |

|             |          |             |
|-------------|----------|-------------|
| APP CRS     | Rwy ldg  | <b>2697</b> |
| <b>320°</b> | TDZE     | <b>762</b>  |
|             | Apt Elev | <b>773</b>  |

# RNAV (GPS) RWY 32

EPHRAIM-GIBRALTAR (3D2)

**▽** DME/DME RNP-0.3 NA. Procedure NA at night. Visibility reduction by helicopters NA. Use Door County Cherryland altimeter setting; when not received, use Menominee altimeter setting and increase all MDA 20 feet.

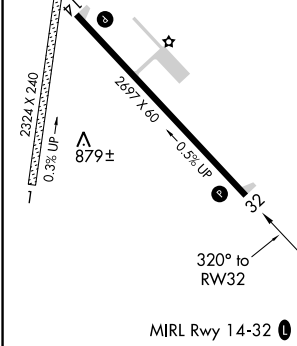
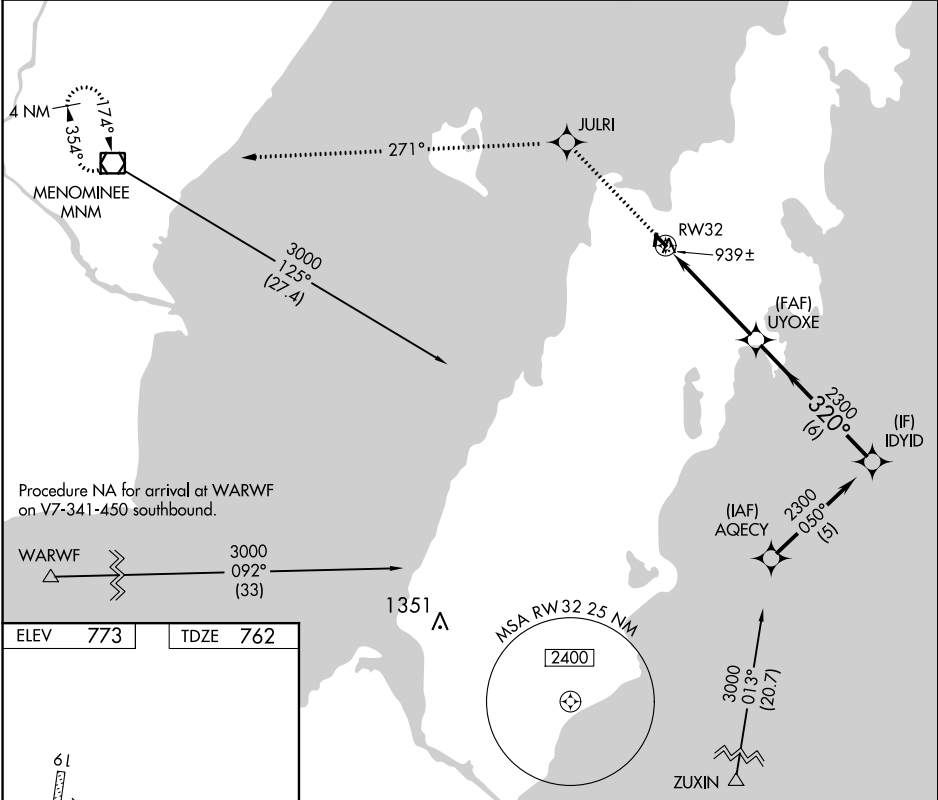
**△** NA

**MISSED APPROACH:** Climb to 3000 direct JULRI and on track 271° to MNM VOR/DME and hold.

AWOS-3PT  
**124.175**

GREEN BAY APP CON\*  
**120.3 338.2**

UNICOM  
**123.0 (CTAF) 0**



|          |        |             |                         |  |       |
|----------|--------|-------------|-------------------------|--|-------|
| 3000     | JULRI  | tr 271°     | MNM                     | VGSI and descent angles not coincident (VGSI Angle 3.00/TCH 25). UYOXE | IDYID |
| ↑        | ✦      |             | ◻                       |  |       |
| RW32     |        | 2300        |                         | 320° 2300  |       |
| 4.7 NM   |        | 6 NM        |                         |  |       |
| CATEGORY | A      | B           | C                       | D  |       |
| LNAV MDA | 1260-1 | 498 (500-1) | 1260-1¼<br>498 (500-1¼) | NA   |       |
| CIRCLING | 1340-1 | 567 (600-1) | 1340-1½<br>567 (600-1½) | NA   |       |

Procedure Turn NA

EC-3, 17 AUG 2017 to 14 SEP 2017

EC-3, 17 AUG 2017 to 14 SEP 2017