

WALDEN, COLORADO

AL-10349 (FAA)

APP CRS	Rwy Idg	N/A
152°	TDZE	N/A
	Apt Elev	8153

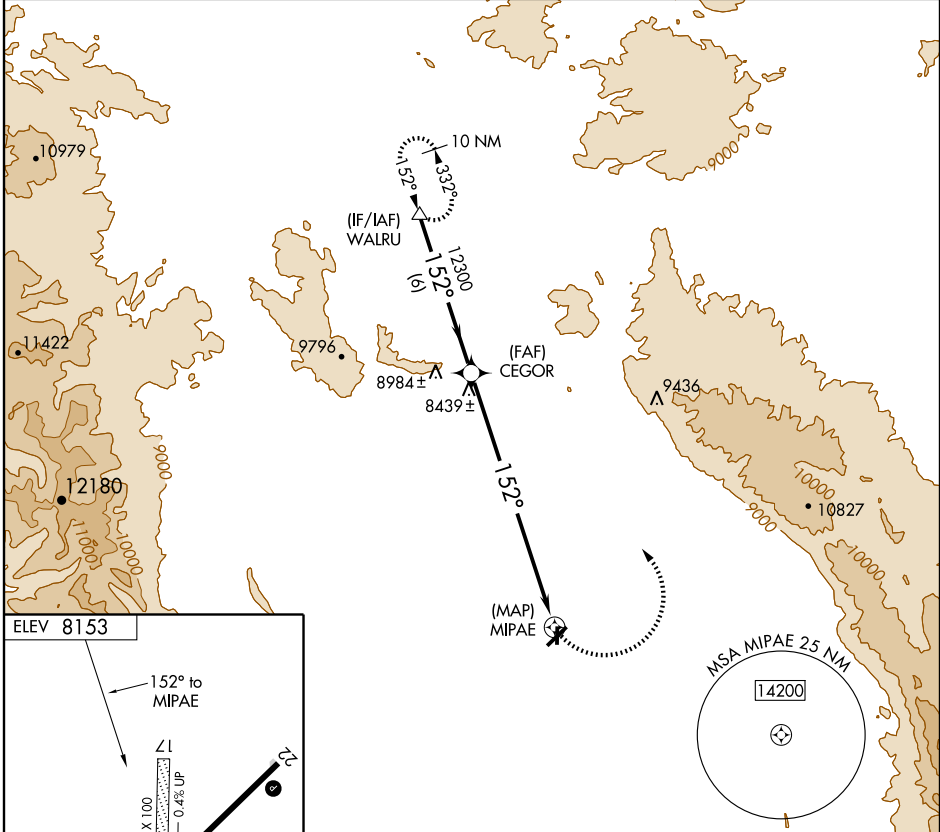
RNAV (GPS)-A

WALDEN-JACKSON COUNTY (33V)

▽ When local altimeter setting not received, procedure NA.
△ NA Circling NA southeast of Rwy 4-22.
 Circling to Rwy 17 and 35 NA.
 DME/DME RNP-0.3 NA.

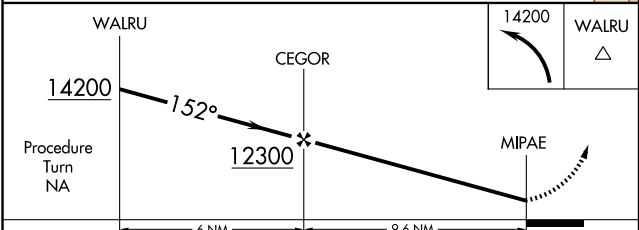
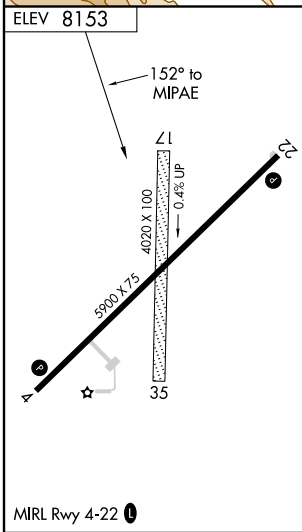
MISSED APPROACH: Climbing left turn to 14200 direct WALRU and hold, continue climb-in-hold to 14200.

AWOS-3 118.625	DENVER CENTER 126.5 371.85	CTAF 122.9 ⓪
--------------------------	--------------------------------------	-------------------------------



SW-1, 31 MAY 2012 to 28 JUN 2012

SW-1, 31 MAY 2012 to 28 JUN 2012



CATEGORY	A	B	C	D
CIRCLING	8880-1	727 (800-1)	8880-2 727 (800-2)	NA

WALDEN, COLORADO
Orig 11125

40°45' N-106°16' W

RNAV (GPS)-A

WALDEN-JACKSON COUNTY (33V)