

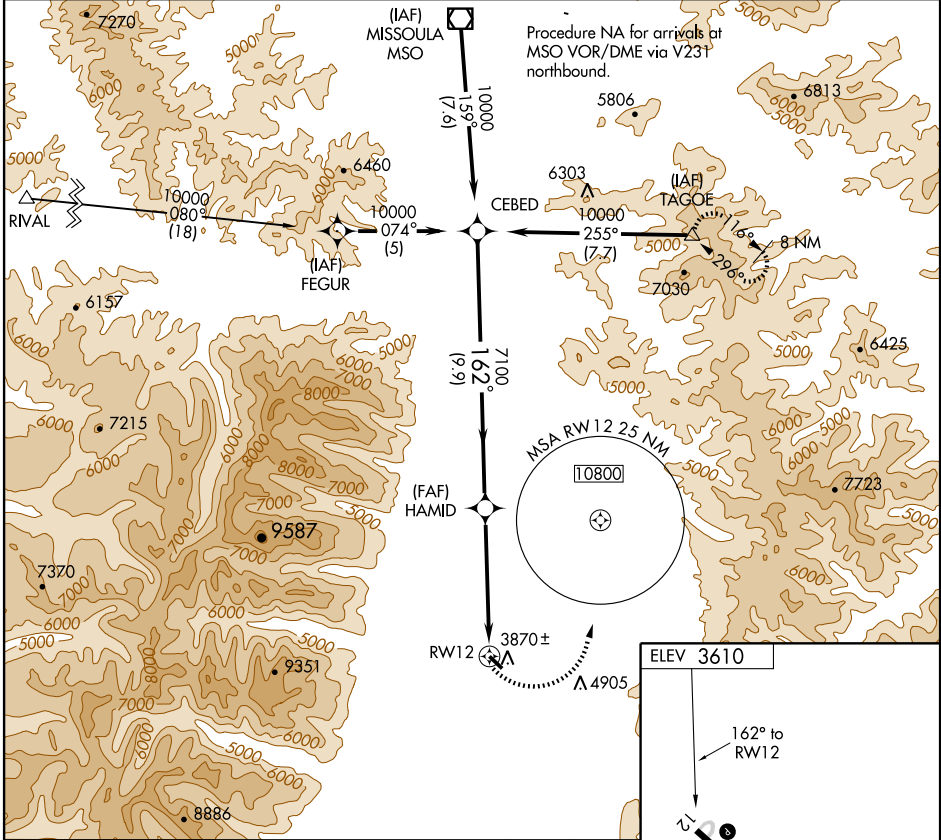
RNAV (GPS)-A

STEVENSVILLE (32S)

APP CRS 162°	Rwy Idg TDZE Apt Elev	N/A N/A 3610
------------------------	-----------------------------	---

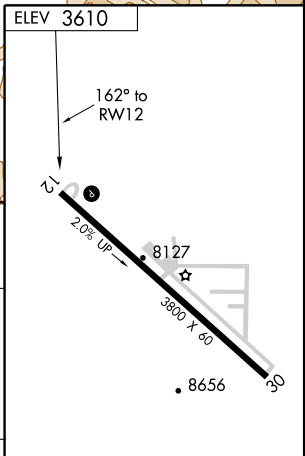
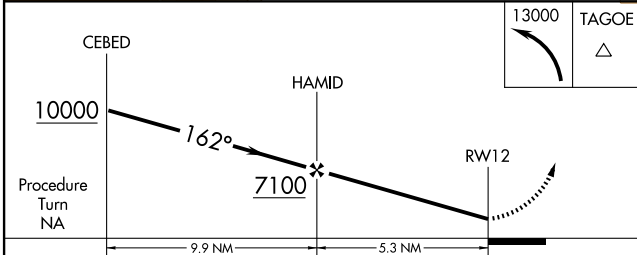
<p>▽ DME/DME RNP- 0.3 NA. △ NA Use Missoula Intl altimeter setting. Circling NA at night to Rwy 30.</p>	<p>MISSED APPROACH: Climbing left turn to 13000 direct TAGOE WP and hold.</p>
---	---

<p>MISSOULA ASOS 126.65</p>	<p>SPOKANE APP CON * 124.9 298.95</p>	<p>SALT LAKE CITY CENTER 133.4 285.4</p>	<p>UNICOM 122.8 (CTAF) 0</p>
--	--	---	---



NW-1, 31 MAY 2012 to 28 JUN 2012

NW-1, 31 MAY 2012 to 28 JUN 2012



CATEGORY	A	B	C	D
CIRCLING	6400-1¼ 2790 (2800-1¼)	6400-1½ 2790 (2800-1½)	NA	

MIRL Rwy 12-30 0