

WAAS CH 87125 W16A	APP CRS 164°	Rwy Idg THRE 289 Apt Elev 289
--	------------------------	---

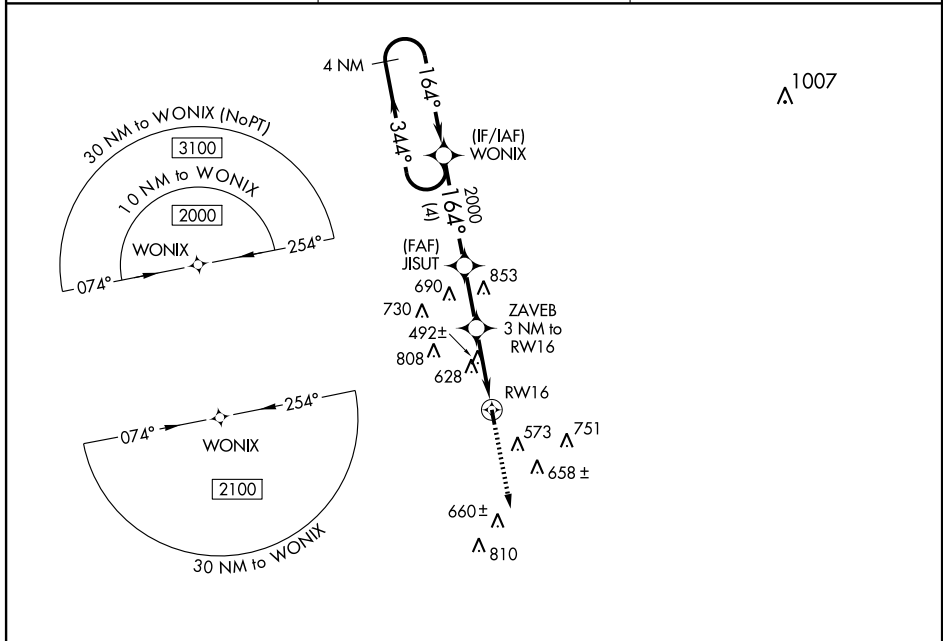
RNAV (GPS) RWY 16

KENEDY/ KARNES COUNTY (2R.9)

▽ Use Pleasanton altimeter setting; when not received, use Victoria altimeter setting and increase all MDA 40 feet. DME/DME RNP-0.3 NA. Procedure NA at night.
△ NA Visibility reduction by helicopters NA.

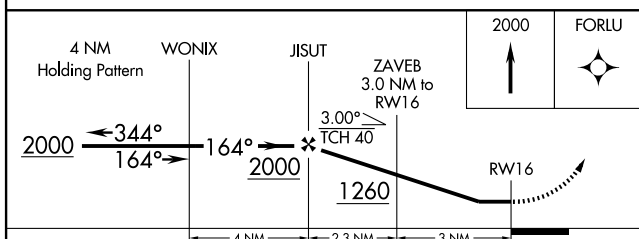
MISSED APPROACH: Climb to 2000 direct FORLU and hold.

PLEASANTON AWOS-3 118.575	HOUSTON CENTER 134.6 322.5	UNICOM 123.0 (CTAF) 0
-------------------------------------	--------------------------------------	---------------------------------

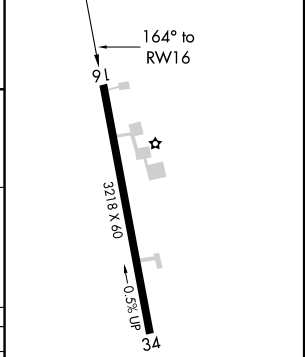


SC-3, 31 MAY 2012 to 28 JUN 2012

SC-3, 31 MAY 2012 to 28 JUN 2012



ELEV 289	THRE 289
----------	----------



CATEGORY	A	B	C	D
LP MDA	860-1	571 (600-1)		NA
RNAV MDA	1040-1 751 (800-1)	1040-1½ 751 (800-1½)		NA
CIRCLING	1040-1 751 (800-1)	1040-1½ 751 (800-1½)		NA

MIRL Rwy 16-34 0

VORTAC THX 111.4 Chan 51	APP CRS 030°	Rwy Idg TDZE Apt Elev	N/A N/A 289
--	------------------------	-----------------------------	--

VOR/DME-A
KENEDY/KARNES COUNTY (2R.9)

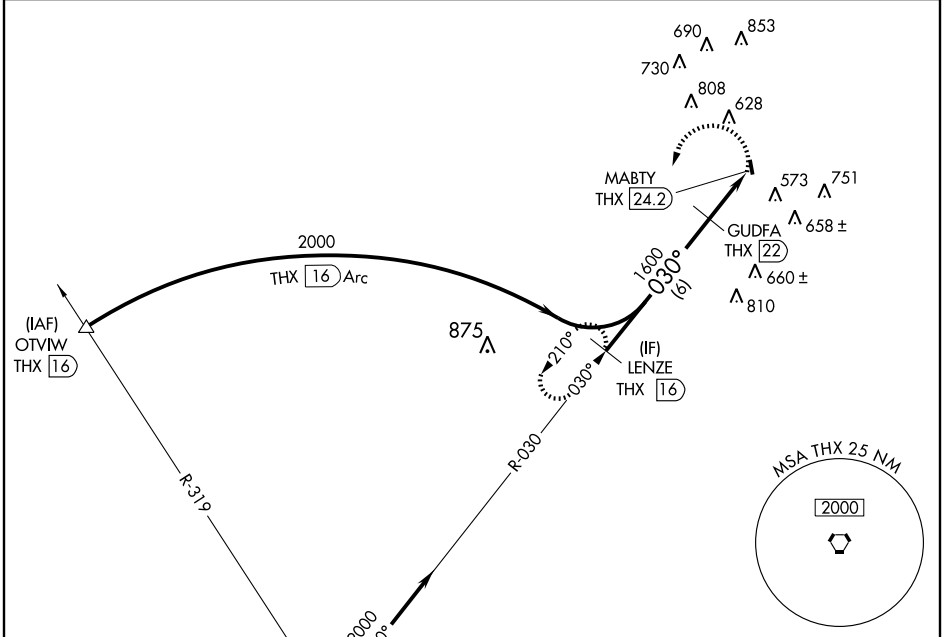
NA Use Pleasanton altimeter setting; when not received, use Victoria altimeter setting and increase all MDA 40 feet. Procedure NA at night. Visibility reduction by helicopters NA.

MISSED APPROACH: Climbing left turn to 2000 via THX VORTAC R-030 to LENZE/16 DME and hold.

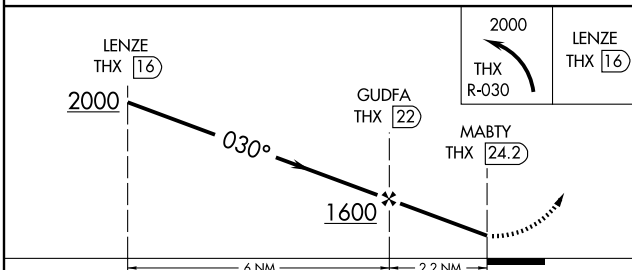
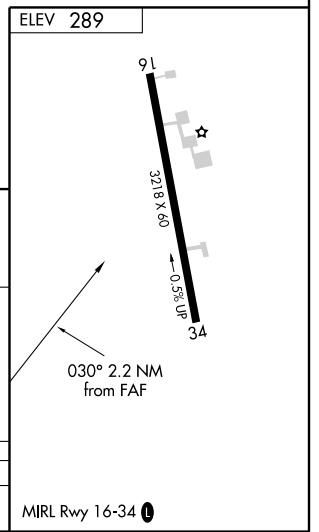
PLEASANTON AWOS-3 118,575	HOUSTON CENTER 134.6 322.5	UNICOM 123.0 (CTAF)
-------------------------------------	--------------------------------------	-------------------------------

SC-3, 31 MAY 2012 to 28 JUN 2012

SC-3, 31 MAY 2012 to 28 JUN 2012



IAF
THREE RIVERS
111.4 THX
Chan 51



CATEGORY	A	B	C	D
CIRCLING	1140-1¼	851 (900-1¼)	NA	

MIRL Rwy 16-34