

BUNKIE, LOUISIANA

AL-6010 (FAA)

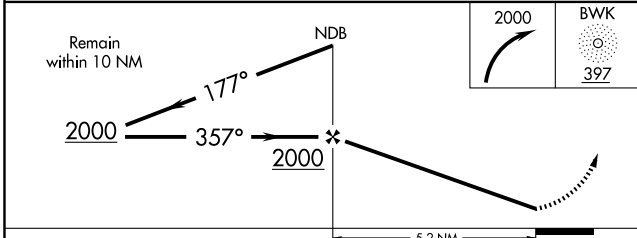
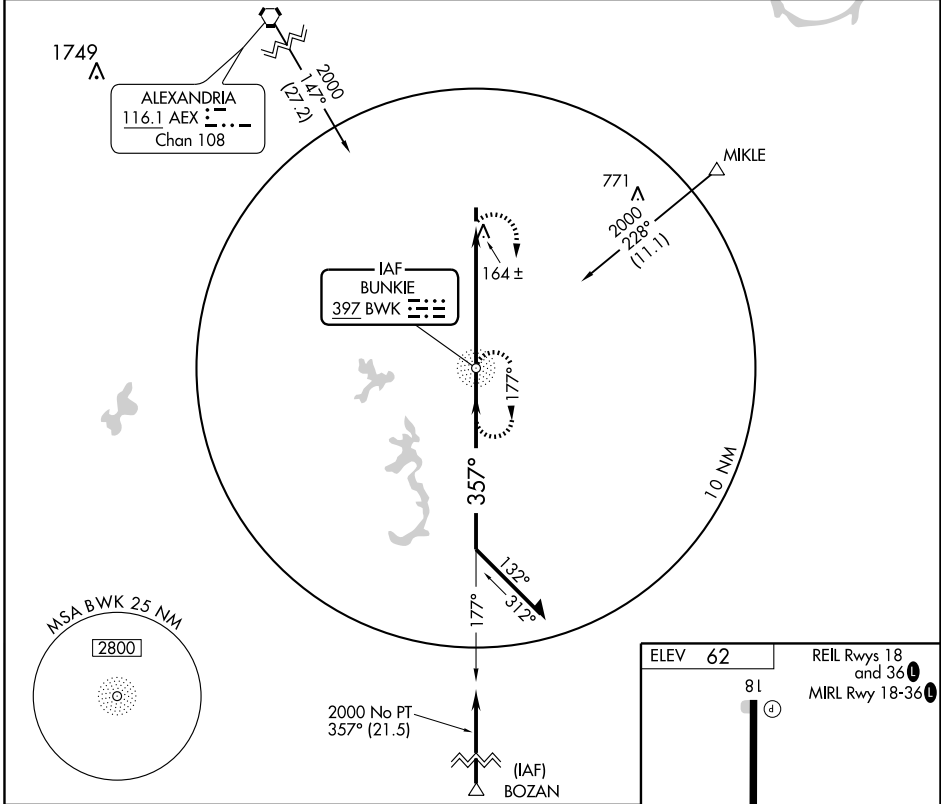
# NDB RWY 36

BUNKIE MUNI (2R6)

BWK NDB <b>397</b>	APP CRS <b>357°</b>	Rwy Idg TDZE Apt Elev	<b>3005</b> <b>60</b> <b>62</b>
-----------------------	------------------------	-----------------------------	---------------------------------------

**NA** Use Alexandria Intl altimeter setting. MISSED APPROACH: Climbing right turn to 2000 direct BWK NDB and hold.

POLK APP CON <b>125.4 302.2</b>	CTAF <b>122.9</b>
------------------------------------	----------------------



ELEV 62	REIL Rwy 18 and 36
81	MIRL Rwy 18-36
36	
TDZE 60	
3005 X 75	
357° 5.2 NM from FAF	

FAF to MAP 5.2 NM					
Knots	60	90	120	150	180
Min:Sec	5:12	3:28	2:36	2:05	1:44

CATEGORY	A	B	C	D
S-36	540-1	480 (500-1)		NA
CIRCLING	540-1	478 (500-1)		NA

BUNKIE, LOUISIANA  
Orig-A 09127

30°57' N-92°14' W

# BUNKIE MUNI (2R6)

## NDB RWY 36

SC-4, 31 MAY 2012 to 28 JUN 2012

SC-4, 31 MAY 2012 to 28 JUN 2012

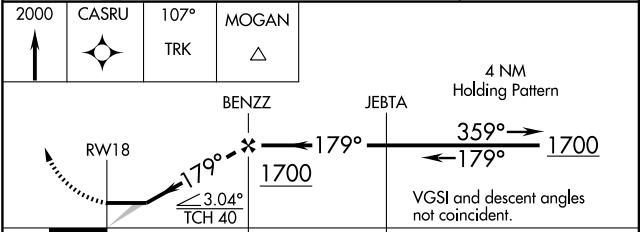
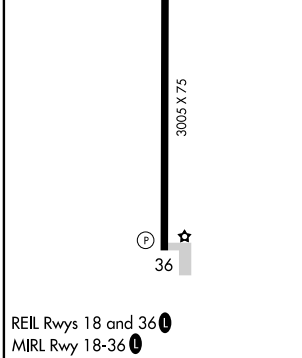
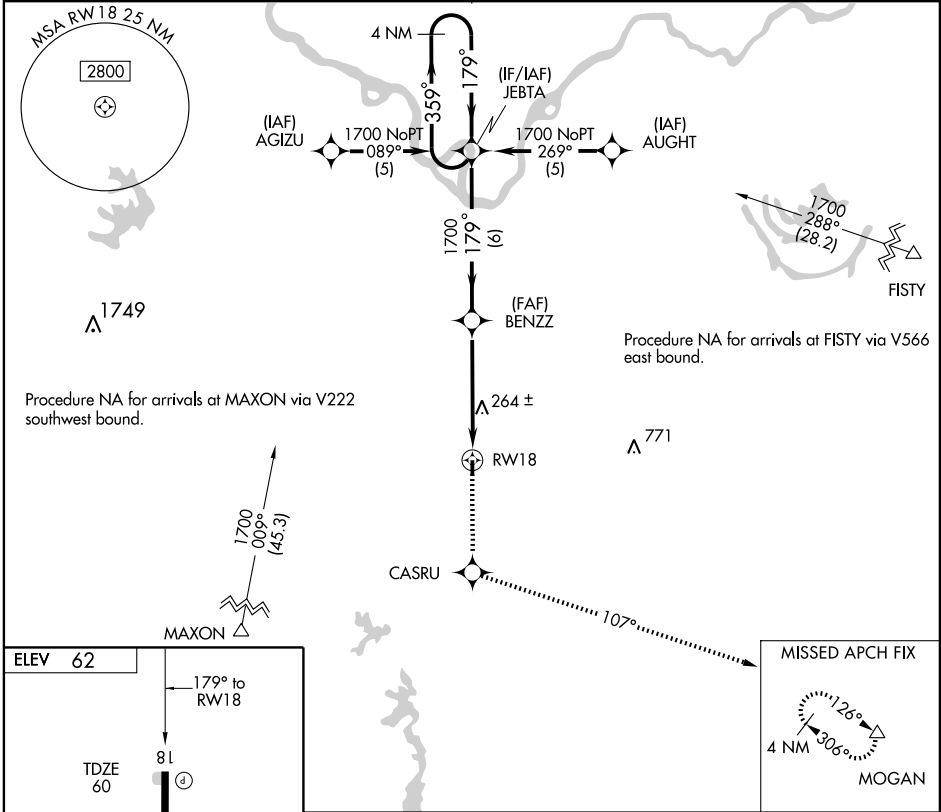
# RNAV (GPS) RWY 18

BUNKIE MUNI (2R6)

APP CRS	Rwy Idg	<b>3005</b>
<b>179°</b>	TDZE	<b>60</b>
	Apt Elev	<b>62</b>

**NA** DME/DME RNP-0.3 NA. Use Alexandria Intl altimeter setting; when not received, use Esler Rgnl altimeter setting. MISSED APPROACH: Climb to 2000 direct CASRU and via 107° track to MOGAN and hold.

POLK APP CON <b>125.4 302.2</b>	CTAF <b>122.9</b>
------------------------------------	----------------------



CATEGORY	A	B	C	D
LNAV MDA	600-1 540 (600-1)		NA	
CIRCLING	600-1 538 (600-1)		NA	

SC-4, 31 MAY 2012 to 28 JUN 2012

SC-4, 31 MAY 2012 to 28 JUN 2012

# RNAV (GPS) RWY 36

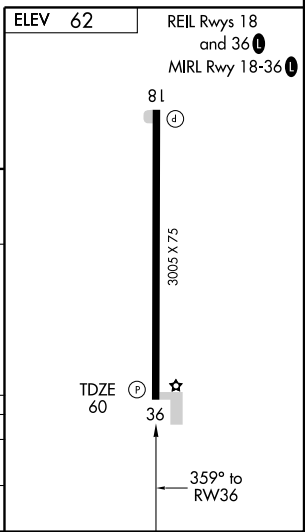
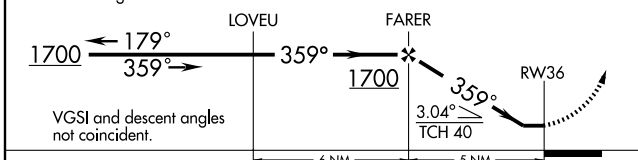
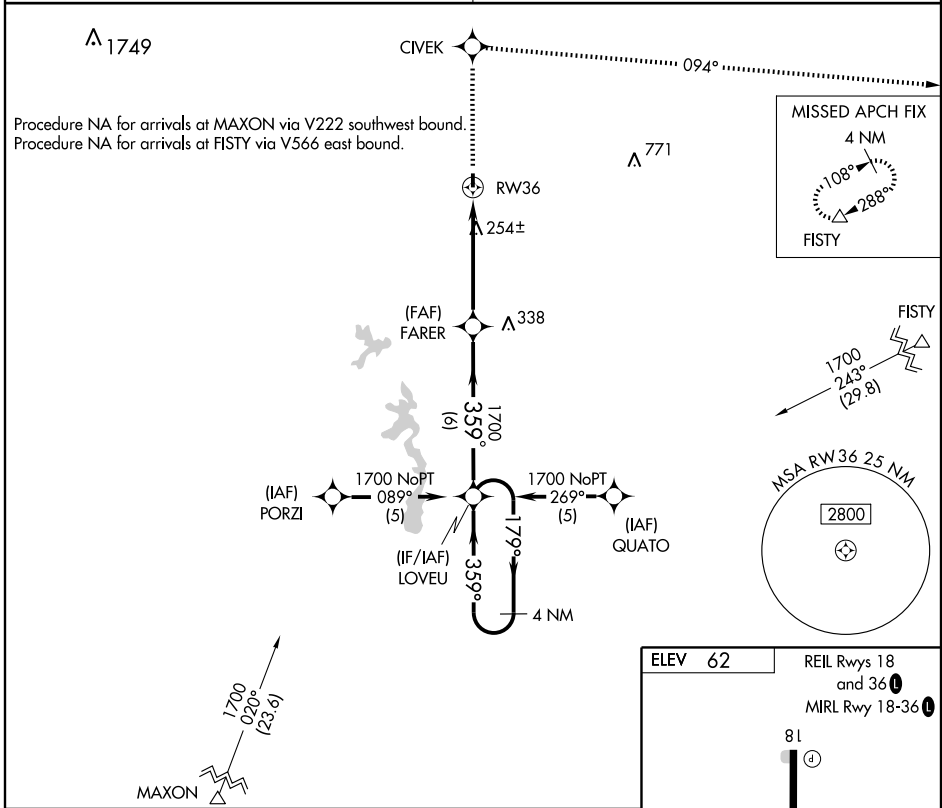
BUNKIE MUNI (2R6)

APP CRS	Rwy Idg	<b>3005</b>
<b>359°</b>	TDZE	<b>60</b>
	Apt Elev	<b>62</b>

**▽** DME/DME RNP-0.3 NA. Visibility reduction by helicopters NA.  
**▲** NA Use Alexandria Intl altimeter setting; when not received, use Esler Rgnl altimeter setting.

**MISSED APPROACH:** Climb to 4000 direct CIVEK and right turn via 094° track to FISTY and hold.

POLK APP CON <b>125.4 302.2</b>	CTAF <b>122.9</b>
------------------------------------	----------------------



CATEGORY	A	B	C	D
LNVA MDA	580-1 520 (600-1)		NA	
CIRCLING	580-1 518 (600-1)		NA	

SC-4, 31 MAY 2012 to 28 JUN 2012

SC-4, 31 MAY 2012 to 28 JUN 2012

VOR/DME-A  
BUNKIE MUNI (2R6)

VORTAC AEX <b>116.1</b> Chan <b>108</b>	APP CRS <b>140°</b>	Rwy Idg TDZE Apt Elev <b>N/A</b> <b>N/A</b> <b>62</b>
---	------------------------	--

▼ Use Alexandria Intl altimeter setting; when not received, use Ester Rgnl altimeter setting.  
▲ NA

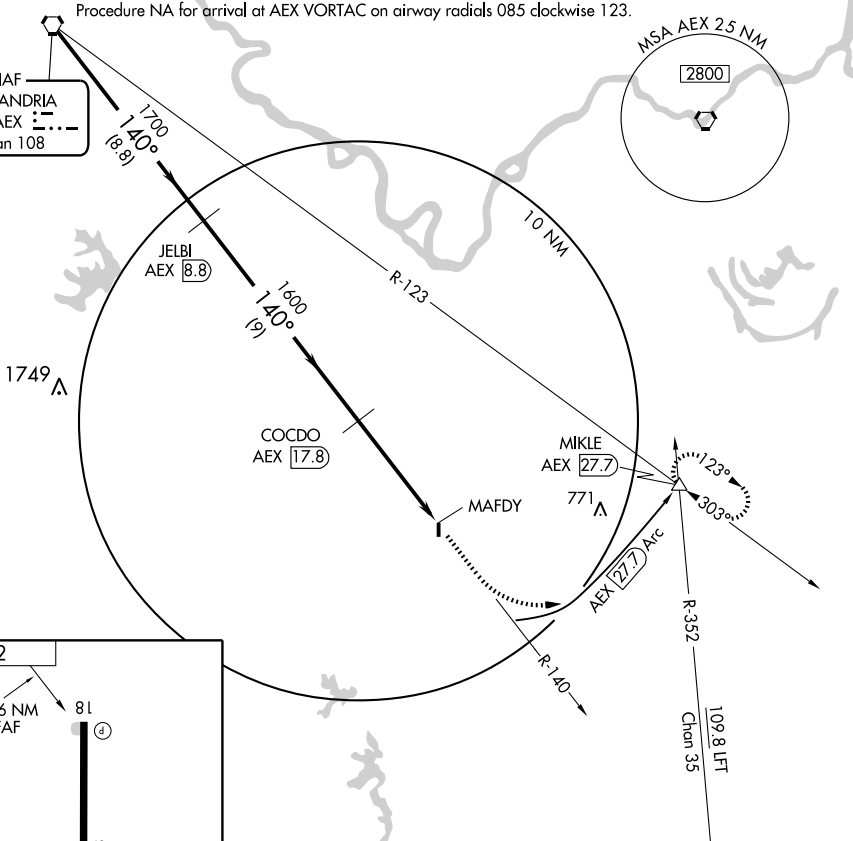
MISSED APPROACH: Climb to 3000 via AEX R-140 and AEX 27.7 DME Arc to MIKLE Int/AEX 27.7 DME and hold.

POLK APP CON  
**125.4 302.2**

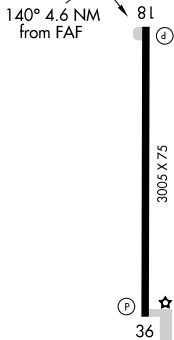
CTAF  
**122.9**

Procedure NA for arrival at AEX VORTAC on airway radials 085 clockwise 123.

IAF  
ALEXANDRIA  
116.1 AEX  
Chan 108



ELEV 62



	VORTAC	JELBI AEX 8.8	3000 AEX R-140	AEX 27.7 Arc	MIKLE AEX 27.7 △
	2000	1700	1600		
	Procedure Turn NA				
	8.8 NM	9 NM	4.6 NM		
CATEGORY	A	B	C	D	
CIRCLING	880-1 818 (900-1)	880-1¼ 818 (900-1¼)		NA	

REIL Rwy 18 and 36  
MIRL Rwy 18-36

SC-4, 31 MAY 2012 to 28 JUN 2012

SC-4, 31 MAY 2012 to 28 JUN 2012