

WAAS CH 86524 W27A	APP CRS 268°	Rwy Idg TDZE Apt Elev	5000 2925 2933
--	------------------------	-----------------------------	---

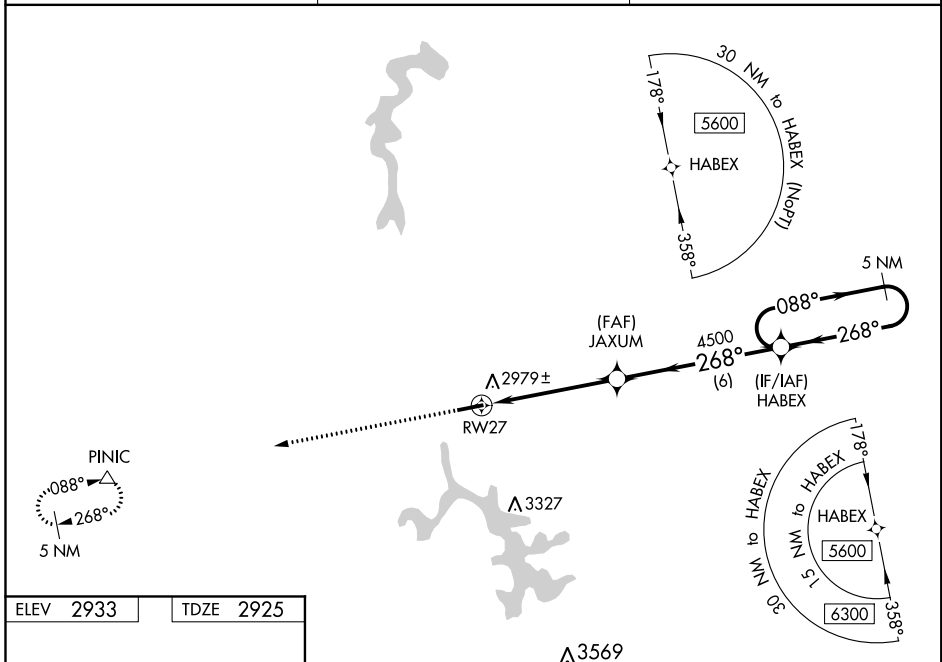
RNAV (GPS) RWY 27

GARRETT COUNTY (2G4)

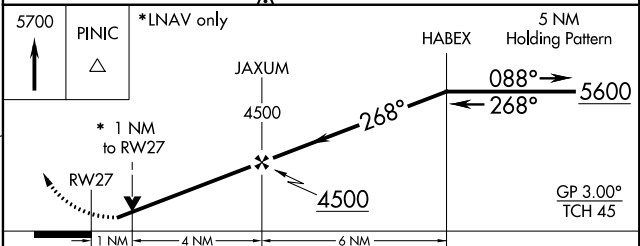
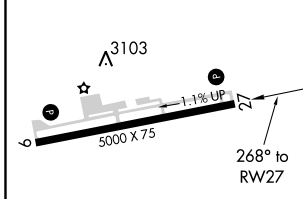
⚠ Baro-VNAV and VDP NA when using Morgantown altimeter setting. For uncompensated Baro-VNAV systems, LNAV/VNAV NA below -20°C (-4°F) or above 54°C (130°F).
⚠ Helicopter visibility reduction below 3/4 SM NA. DME/DME RNP-0.3 NA. When local altimeter setting not received, use Morgantown altimeter setting and increase all DA and all MDA 300 feet. Increase LPV and LNAV/VNAV all Cats visibility 1 1/2 mile, LNAV Cat C visibility 7/8 mile and Circling Cat C visibility 1 mile.

MISSED APPROACH:
Climb 5700 direct PINIC and hold.

AWOS-3 120.125	CLARKSBURG APP CON ★ 121.15	UNICOM 123.0 (CTAF) 📻
--------------------------	---------------------------------------	--



ELEV 2933	TDZE 2925
-----------	-----------



CATEGORY	A	B	C	D
LPV DA	3175-1	250 (300-1)		NA
LNAV/VNAV DA	3197-1	272 (300-1)		NA
LNAV MDA	3240-1	315 (400-1)		NA
C CIRCLING	3340-1 407 (500-1)	3400-1 467 (500-1)	3500-1 1/2 567 (600-1 1/2)	NA

REIL Rwy 9 and 27 **📻**
 MIRL Rwy 9-27 **📻**
 OAKLAND, MARYLAND
 Amdt 2 08JAN15

39°35'N-79°20'W

RNAV (GPS) RWY 27

NE-3, 12 OCT 2017 to 09 NOV 2017

NE-3, 12 OCT 2017 to 09 NOV 2017

WAAS CH 69624 W09A	APP CRS 088°	Rwy Idg TDZE Apt Elev	5000 2933 2933
--	------------------------	-----------------------------	---

RNAV (GPS) RWY 9

GARRETT COUNTY (2G4)

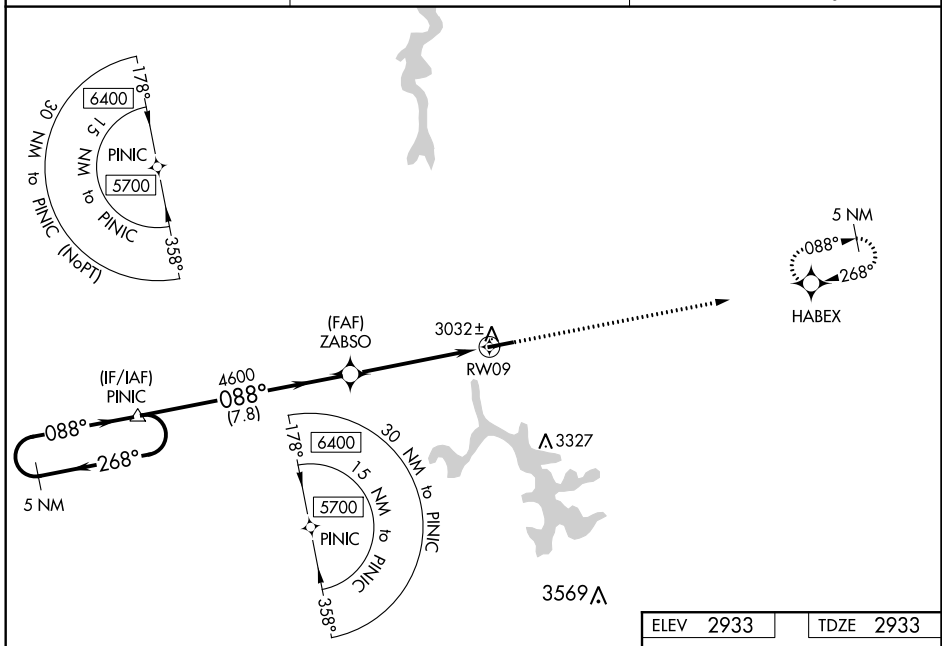
▼ Baro-VNAV and VDP NA when using Morgantown altimeter setting. For uncompensated Baro-VNAV systems, LNAV/VNAV NA below -20° (-4°F) or above 54°C (130°F). Helicopter visibility reduction below 3/4 SM NA. DME/DME RNP -0.3 NA. When local altimeter setting not received, use Morgantown altimeter setting and increase all DA and MDA 300 feet. Increase LPV and LNAV/VNAV all Cats visibility 1 1/8 mile, LNAV Cat C visibility 7/8 mile and Circling Cat C visibility 1 mile.

MISSED APPROACH:
Climb to 5600 direct HABEX and hold.

AWOS-3
120.125

CLARKSBURG APP CON ★
121.15

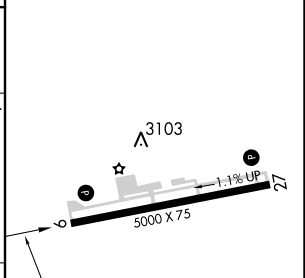
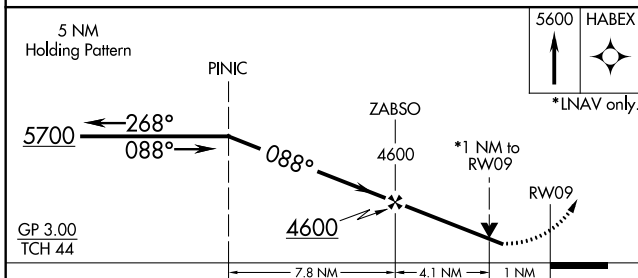
UNICOM
123.0 (CTAF) 0



NE-3, 12 OCT 2017 to 09 NOV 2017

NE-3, 12 OCT 2017 to 09 NOV 2017

ELEV 2933	TDZE 2933
-----------	-----------



CATEGORY	A	B	C	D
LPV DA	3183-3/4	250 (300-3/4)		NA
LNAV/VNAV DA	3183-3/4	250 (300-3/4)		NA
LNAV MDA	3300-1	367 (400-1)		NA
C CIRCLING	3340-1 407 (500-1)	3400-1 467 (500-1)	3500-1 1/2 567 (600-1 1/2)	NA

REIL Rwy 9 and 27 **0**
MIRL Rwy 9-27 **0**

VORTAC MGW 111.6 Chan 53	APP CRS 092°	Rwy Idg TDZE Apt Elev	5000 2933 2933
--	------------------------	-----------------------------	---

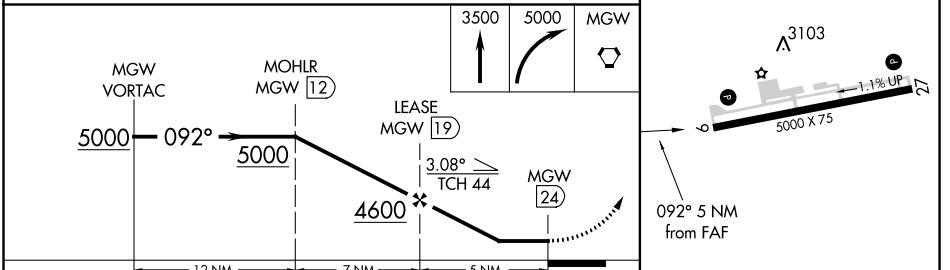
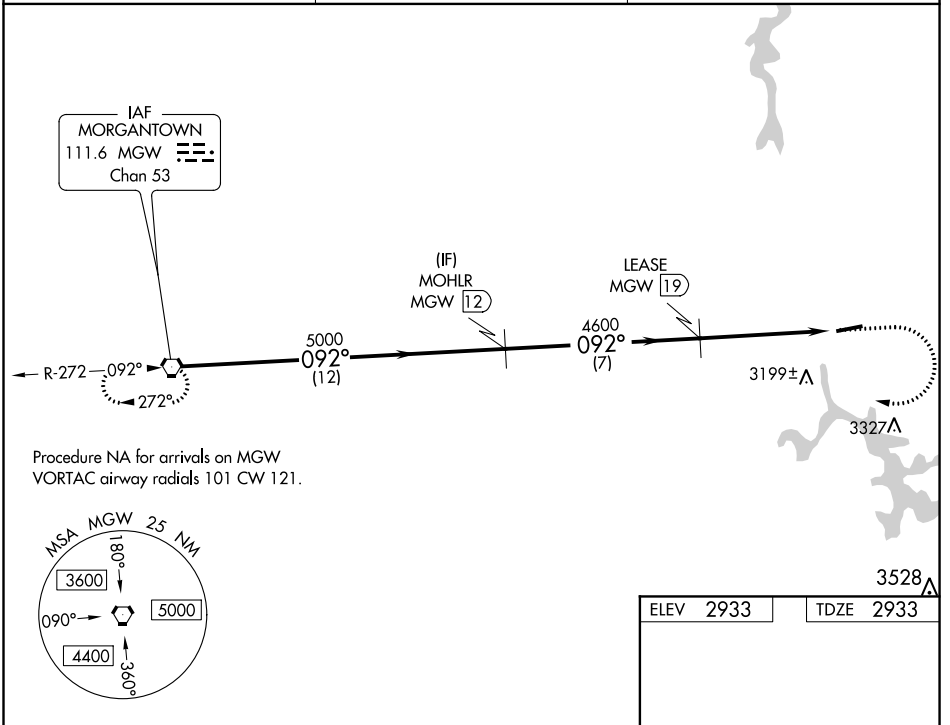
VOR/DME RWY 9

GARRETT COUNTY (2G4)

NA Helicopter visibility reduction below $\frac{3}{4}$ SM NA.
When local altimeter setting not received, use Morgantown altimeter setting and increase all MDA 300 feet.
Increase S-09 Cat B and Circling Cat B visibility to $1\frac{1}{4}$ mile and S-09 Cat C and Circling Cat C visibility to $2\frac{1}{2}$ mile.

MISSED APPROACH: Climb to 3500 then climbing right turn to 5000 direct MGW VORTAC and hold.

AWOS-3 120.125	CLARKSBURG APP CON ★ 121.15	UNICOM 123.0 (CTAF) 0
--------------------------	---------------------------------------	--



CATEGORY	A	B	C	D
S-09	3460-1	527 (600-1)	3460-1½ 527 (600-1½)	NA
CIRCLING	3460-1	527 (600-1)	3500-1½ 567 (600-1½)	NA

REIL Rwy 9 and 27 **0**
MIRL Rwy 9-27 **0**

NE-3, 12 OCT 2017 to 09 NOV 2017

NE-3, 12 OCT 2017 to 09 NOV 2017