

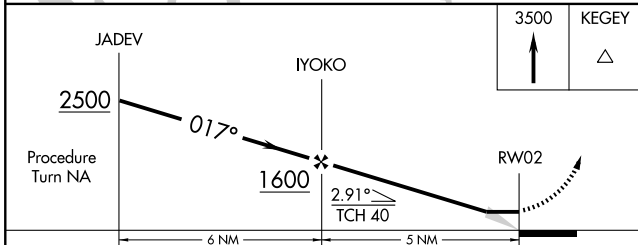
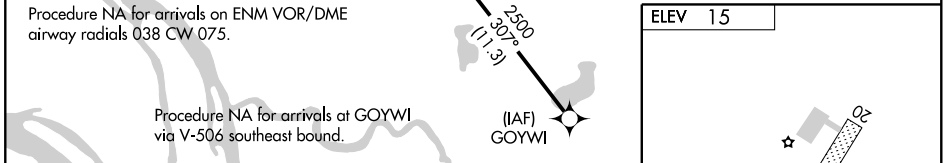
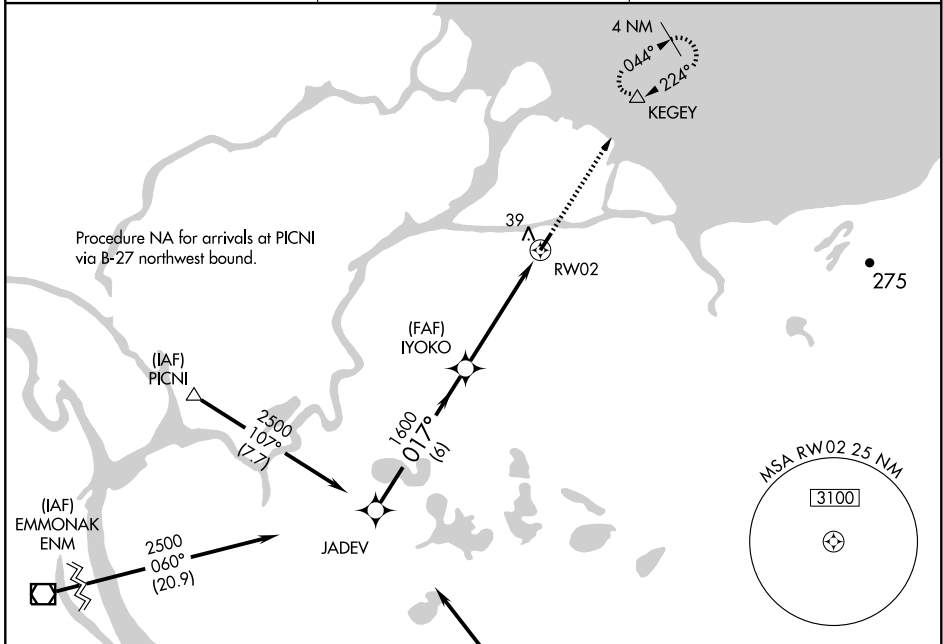
RNAV (GPS) RWY 2

KOTLIK (2A.9) (P/FK0)

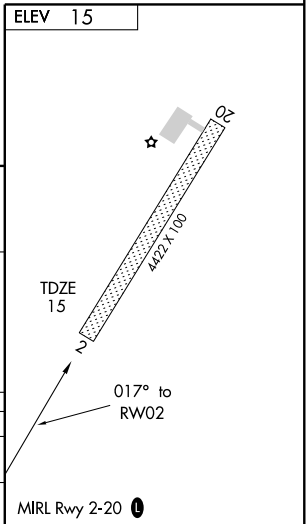
APP CRS 017°	Rwy Idg 4422
	TDZE 15
	Apt Elev 15

▲ NA	DME/DME RNP-0.3 NA. Use Emmonak allimeter setting. Procedure NA at night.	MISSED APPROACH: Climb to 3500 direct KEGEY WP and hold.
-------------	---	---

EMMONAK AWOS-3 135.35	ANCHORAGE CENTER 124.5 226.8	CTAF 122.9 0
---------------------------------	--	------------------------



CATEGORY	A	B	C	D
LNAV MDA	500-1	485 (500-1)		NA
CIRCLING	560-1	545 (600-1)		NA



AK, 31 MAY 2012 to 26 JUL 2012

AK, 31 MAY 2012 to 26 JUL 2012

KOTLIK, ALASKA

AL-9750 (FAA)

RNAV (GPS) RWY 20

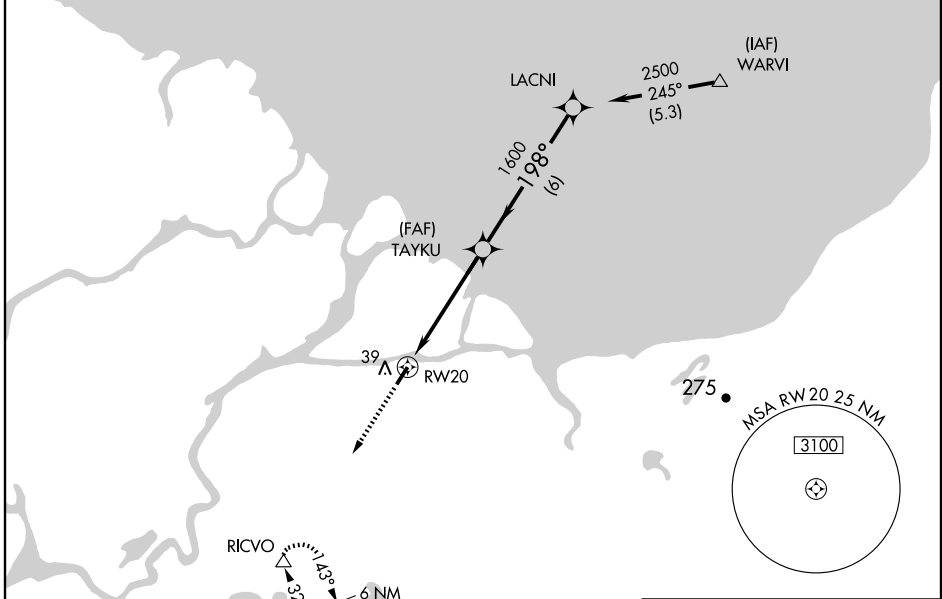
KOTLIK (2A9) (PFKO)

APP CRS 198°	Rwy Idg TDZE Apt Elev	4422 15 15
------------------------	-----------------------------	---------------------------------------

▲ NA	DME/DME RNP-0.3 NA. Use Emmonak altimeter setting. Procedure NA at night.	MISSED APPROACH: Climb to 8000 direct RICVO WP and hold.
-------------	---	--

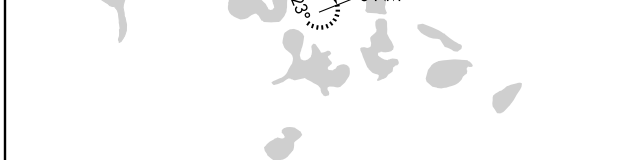
EMMONAK AWOS-3 135.35	ANCHORAGE CENTER 124.5 226.8	CTAF 122.9 0
---------------------------------	--	------------------------

Procedure NA for arrivals at WARVI via V-385 northeast bound.

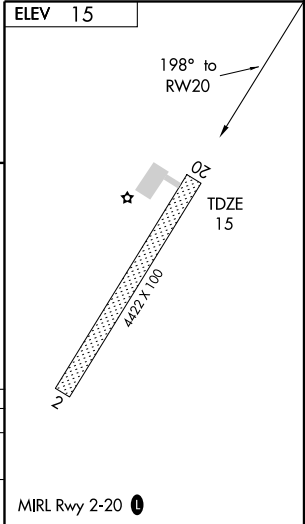


AK, 31 MAY 2012 to 26 JUL 2012

AK, 31 MAY 2012 to 26 JUL 2012



8000	RICVO	TAYKU	LACNI
▲	△		
		1600	2500
		198°	
		2.91°	
		TCH 40	
	5 NM	6 NM	



CATEGORY	A	B	C	D
LNVA MDA	440-1	425 (500-1)		NA
CIRCLING	480-1	465 (500-1)		NA

KOTLIK, ALASKA
Orig-A 10266

63° 02' N-163° 32' W

RNAV (GPS) RWY 20

KOTLIK (2A9) (PFKO)