

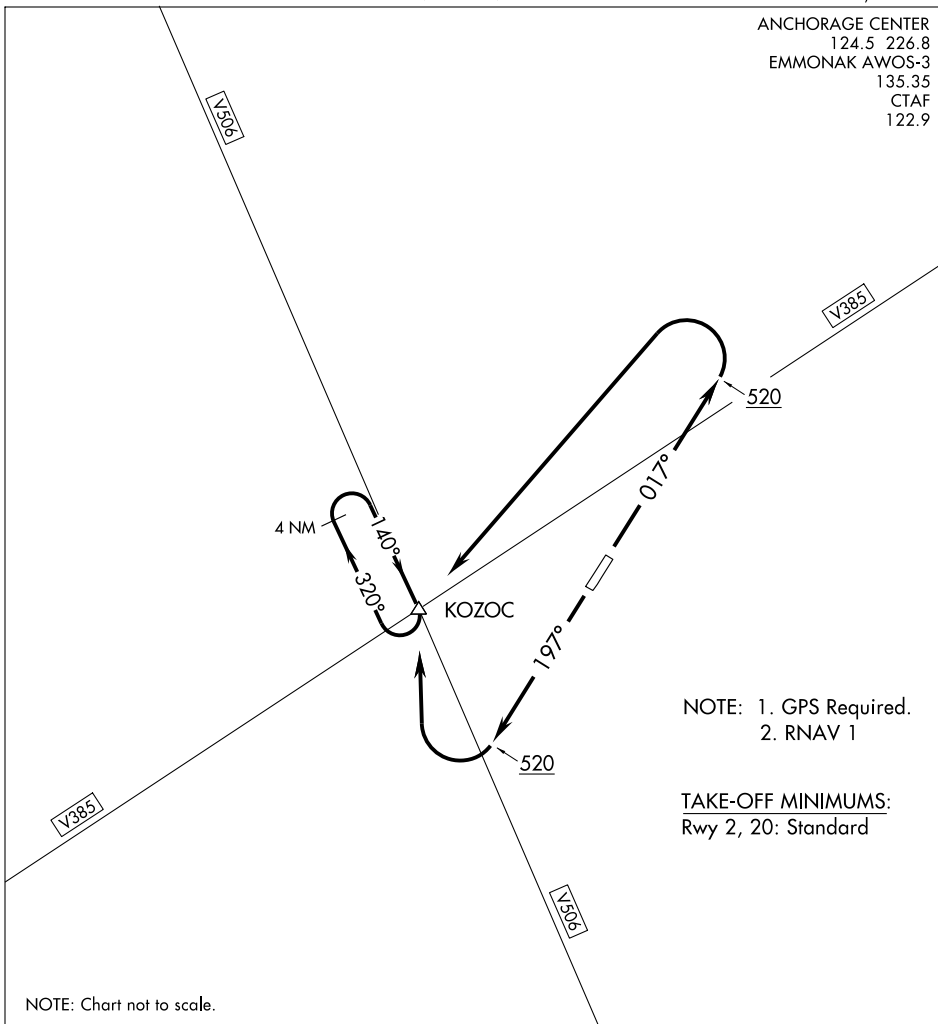
(KOZOC1.KOZOC) 09239

SL-9750 (FAA)

KOTLIK (2A9)(PFKO)
KOTLIK, ALASKA

KOZOC ONE DEPARTURE (RNAV)

ANCHORAGE CENTER
124.5 226.8
EMMONAK AWOS-3
135.35
CTAF
122.9



NOTE: 1. GPS Required.
2. RNAV 1

TAKE-OFF MINIMUMS:
Rwy 2, 20: Standard

NOTE: Chart not to scale.

DEPARTURE ROUTE DESCRIPTION

TAKE-OFF RWY 2: Climb heading 017° to 520', then climbing left turn direct KOZOC, thence

TAKE-OFF RWY 20: Climb heading 197° to 520', then climbing right turn direct KOZOC, thence

.... climb in KOZOC holding pattern (NW, right turns, 140° inbound), to cross KOZOC at or above MEA for route of flight, before proceeding on course.

KOZOC ONE DEPARTURE (RNAV)

(KOZOC1.KOZOC) 09239

KOTLIK, ALASKA
KOTLIK (2A9)(PFKO)

AK, 31 MAY 2012 to 26 JUL 2012

AK, 31 MAY 2012 to 26 JUL 2012

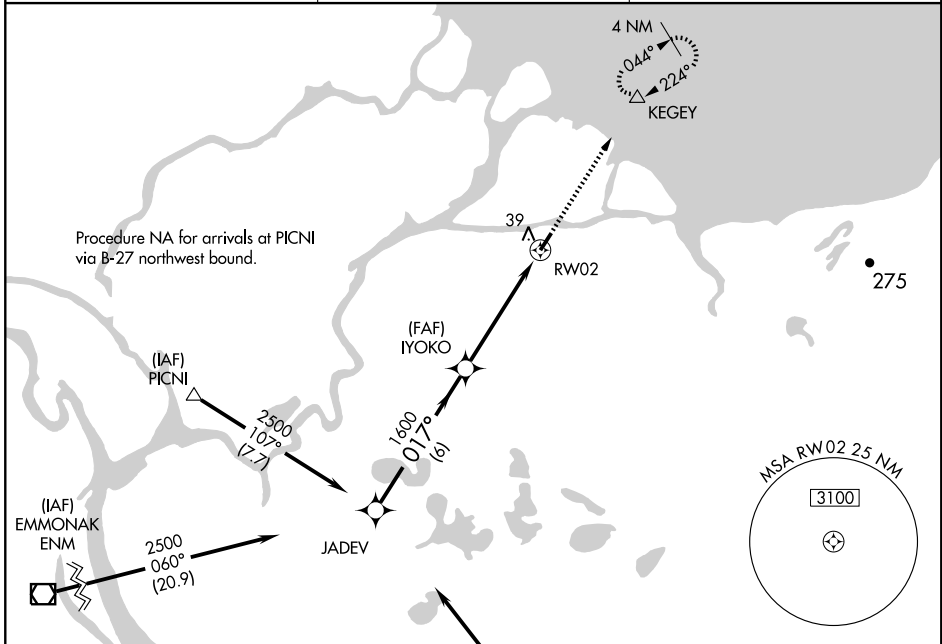
RNAV (GPS) RWY 2

KOTLIK (2A.9) (P/FK0)

APP CRS 017°	Rwy Idg 4422
	TDZE 15
	Apt Elev 15

▲ NA	DME/DME RNP-0.3 NA. Use Emmonak allimeter setting. Procedure NA at night.	MISSED APPROACH: Climb to 3500 direct KEGEY WP and hold.
-------------	---	---

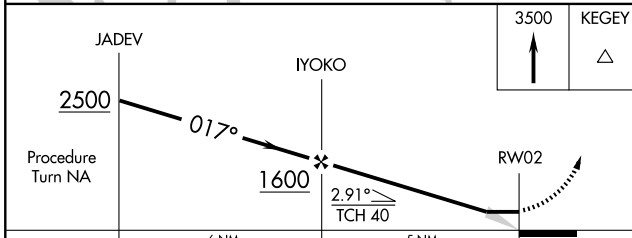
EMMONAK AWOS-3 135.35	ANCHORAGE CENTER 124.5 226.8	CTAF 122.9 0
---------------------------------	--	------------------------



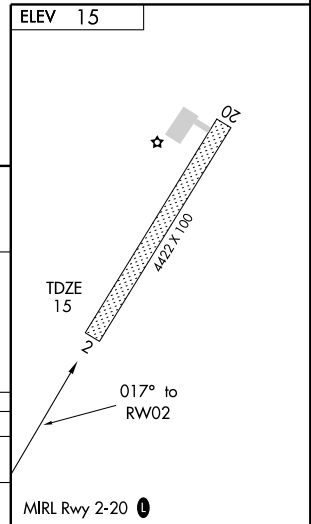
Procedure NA for arrivals at PICNI via B-27 northwest bound.

Procedure NA for arrivals at ENM VOR/DME airway radials 038 CW 075.

Procedure NA for arrivals at GOYWI via V-506 southeast bound.



CATEGORY	A	B	C	D
LNVA MDA	500-1	485 (500-1)		NA
CIRCLING	560-1	545 (600-1)		NA



AK, 31 MAY 2012 to 26 JUL 2012

AK, 31 MAY 2012 to 26 JUL 2012

KOTLIK, ALASKA

AL-9750 (FAA)

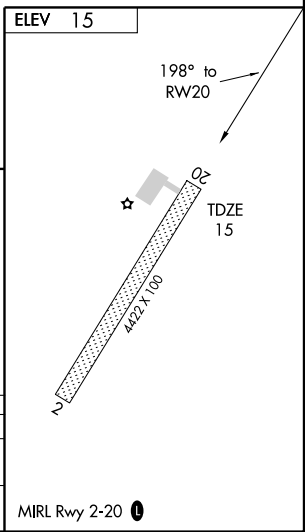
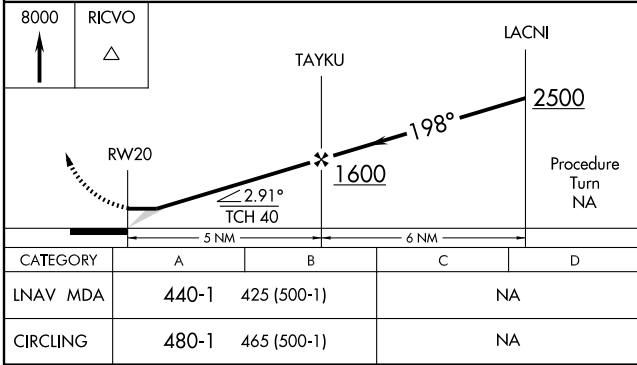
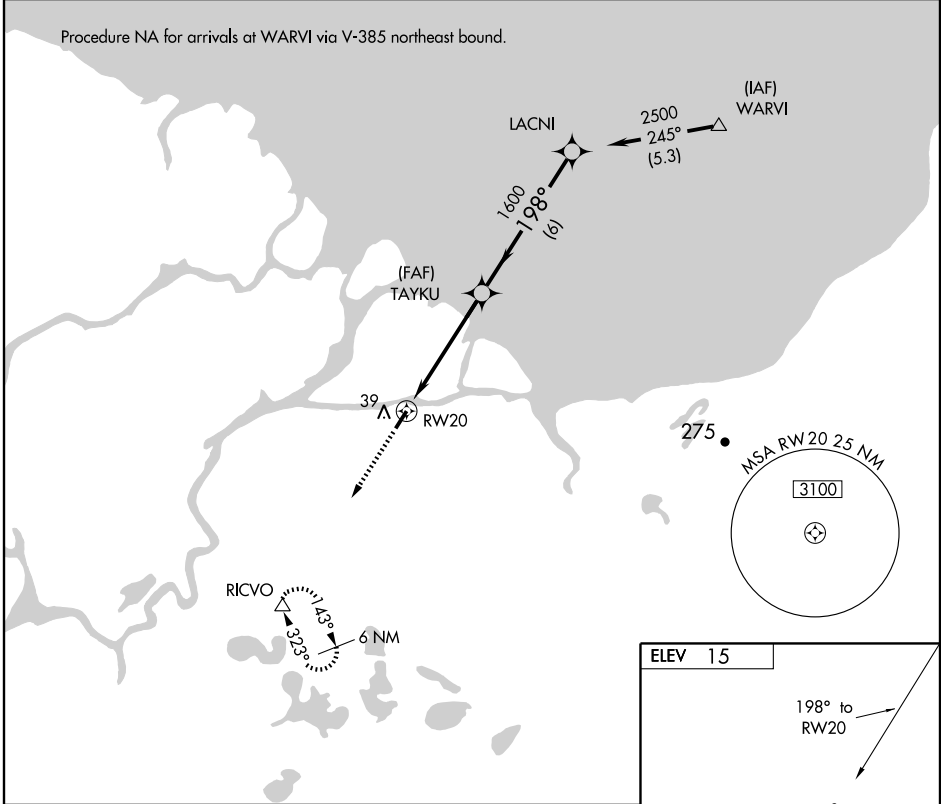
RNAV (GPS) RWY 20

KOTLIK (2A9) (PFKO)

APP CRS 198°	Rwy Idg TDZE Apt Elev	4422 15 15
------------------------	-----------------------------	---------------------------------------

▲ NA	DME/DME RNP-0.3 NA. Use Emmonak altimeter setting. Procedure NA at night.	MISSED APPROACH: Climb to 8000 direct RICVO WP and hold.
-------------	---	--

EMMONAK AWOS-3 135.35	ANCHORAGE CENTER 124.5 226.8	CTAF 122.9 0
---------------------------------	--	------------------------



AK, 31 MAY 2012 to 26 JUL 2012

AK, 31 MAY 2012 to 26 JUL 2012

KOTLIK, ALASKA
Orig-A 10266

63° 02' N-163° 32' W

RNAV (GPS) RWY 20

KOTLIK (2A9) (PFKO)