

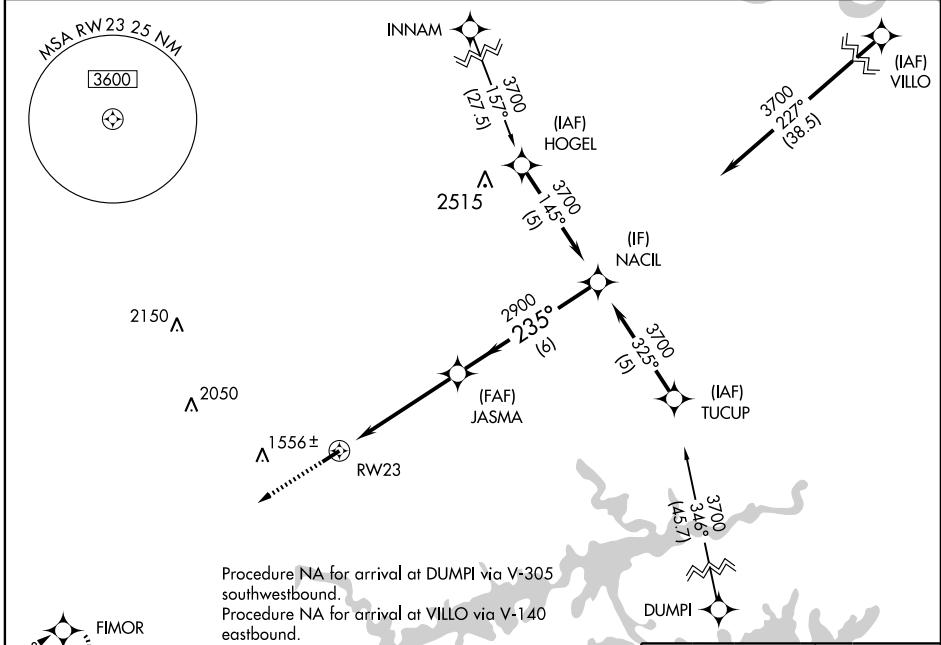
APP CRS <b>235°</b>	Rwy Idg TDZE Apt Elev	<b>4795</b> <b>1268</b> <b>1268</b>
------------------------	-----------------------------	---

# RNAV (GPS) RWY 23

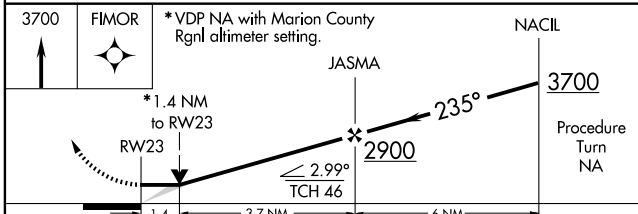
CLINTON/HOLLEY MOUNTAIN AIRPARK (2A2)

**▼** Obtain local altimeter setting on CTAF; when not received, use Marion County Rgnl altimeter setting. DME/DME RNP-0.3 NA.  
**▲ NA** MISSED APPROACH: Climb to 3700 direct FIMOR and hold.

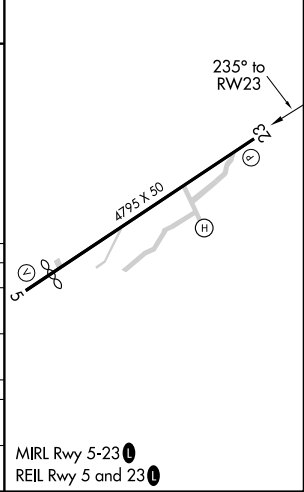
MEMPHIS CENTER <b>126.85 281.55</b>	UNICOM <b>122.7 (CTAF) 0</b>
--	---------------------------------



ELEV 1268	TDZE 1268
-----------	-----------



CATEGORY	A	B	C	D
LNVA MDA	1740-1	472 (500-1)	1740-1¼ 472 (500-1¼)	NA
CIRCLING	1760-1	492 (500-1)	1800-1½ 532 (600-1½)	NA
MARION COUNTY RGNL ALTIMETER SETTING MINIMUMS				
LNVA MDA	1900-1	632 (700-1)	1900-1¾ 632 (700-1¾)	NA
CIRCLING	1940-1	672 (700-1)	1960-2 712 (800-2)	NA



SC-1, 31 MAY 2012 to 28 JUN 2012

SC-1, 31 MAY 2012 to 28 JUN 2012

MIRL Rwy 5-23 0  
REIL Rwy 5 and 23 0

APP CRS <b>055°</b>	Rwy Idg TDZE Apt Elev	<b>4397</b> <b>1268</b> <b>1268</b>
------------------------	-----------------------------	---

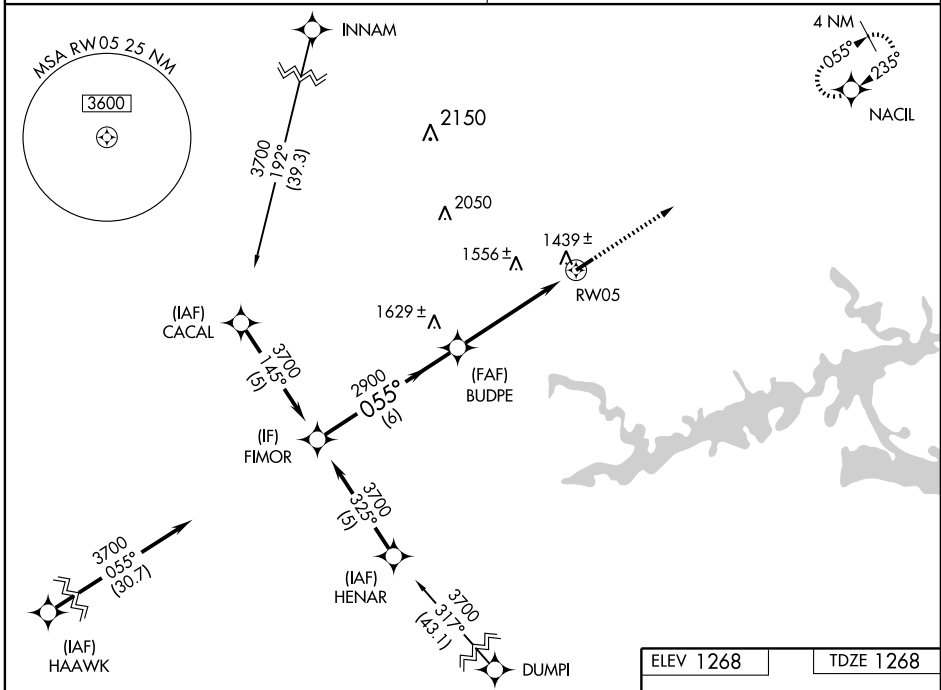
# RNAV (GPS) RWY 5

CLINTON/HOLLEY MOUNTAIN AIRPARK (2A.2)

**NA** Obtain local altimeter setting on CTAF; when not received, use Marion County Rgnl altimeter setting. DME/DME RNP-0.3 NA.

MISSED APPROACH: Climb to 3700 direct NACIL and hold.

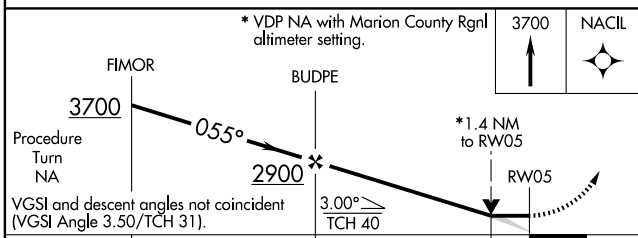
MEMPHIS CENTER <b>126.85 281.55</b>	UNICOM <b>122.7 (CTAF)</b>
--	-------------------------------



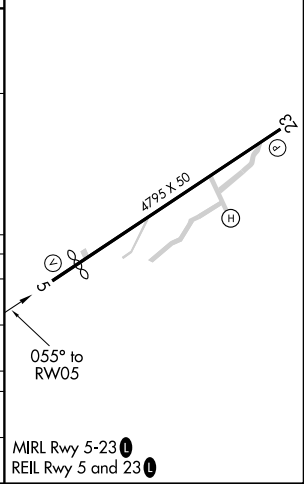
SC-1, 31 MAY 2012 to 28 JUN 2012

SC-1, 31 MAY 2012 to 28 JUN 2012

ELEV 1268	TDZE 1268
-----------	-----------



CATEGORY	A	B	C	D
LNAV MDA	1760-1	492 (500-1)	1760-1¼ 492 (500-1¼)	NA
CIRCLING	1760-1	492 (500-1)	1780-1½ 512 (600-1½)	NA
MARION COUNTY RGNL ALTIMETER SETTING MINIMUMS				
LNAV MDA	1920-1	652 (700-1)	1920-1¾ 652 (700-1¾)	NA
CIRCLING	1940-1	672 (700-1)	1960-2 692 (700-2)	NA



MIRL Rwy 5-23  
REIL Rwy 5 and 23