

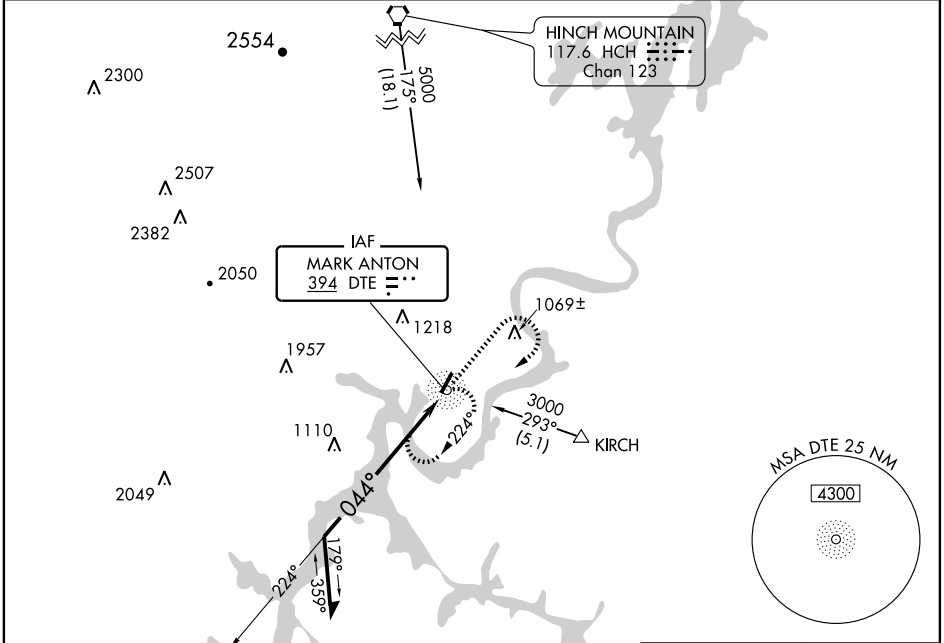
NDB DTE	APP CRS	Rwy Idg	5001
394	044°	THRE	711
		Apt Elev	718

NDB RWY 3
DAYTON/MARK ANTON (2A0)

NA Visibility reduction by helicopters NA. When local altimeter setting not received, use Chattanooga altimeter setting and increase all MDA 80 feet; increase S-3 Cat B visibility ¼ mile, S-3 Cat C and D visibility ½ mile and Circling Cat B and C visibility ¼ mile. When VGSI inop, Circling Rwy 21 NA at night.

MISSED APPROACH:
Climb to 2000 then climbing right turn to 3000 direct DTE NDB and hold.

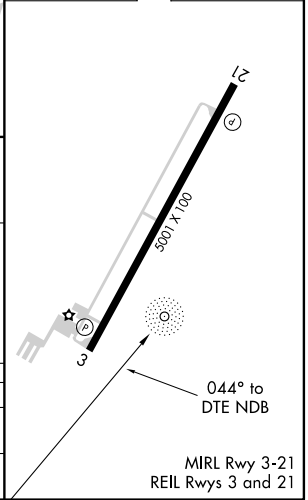
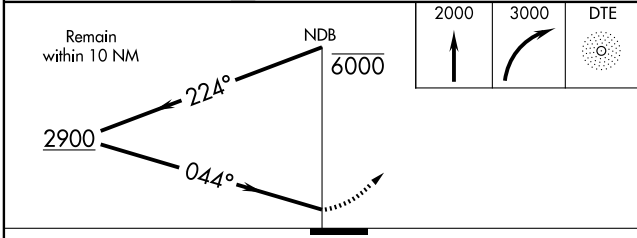
AWOS-3 135.075	CHATTANOOGA APP CON * 125.1 379.1	UNICOM 123.0 (CTAF)
--------------------------	---	-------------------------------



SE-1, 31 MAY 2012 to 28 JUN 2012

SE-1, 31 MAY 2012 to 28 JUN 2012

ELEV 718	THRE 711
----------	----------



CATEGORY	A	B	C	D
S-3	1620-1¼ 909 (1000-1¼)		1620-2½ 909 (1000-2½)	
CIRCLING	1620-1¼ 902 (1000-1¼)		1620-2¾ 902 (1000-2¾)	1620-3 902 (1000-3)

WAAS CH 70522 W21A	APP CRS 213°	Rwy Idg THRE Apt Elev 718	5001 718 718
--	------------------------	--	---

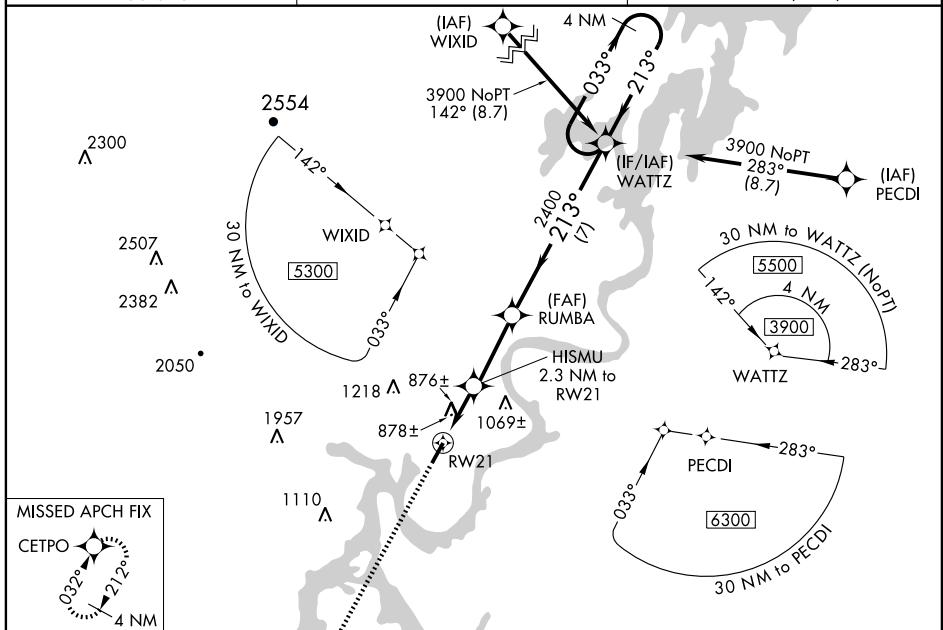
RNAV (GPS) RWY 21

DAYTON/MARK ANTON (2A0)

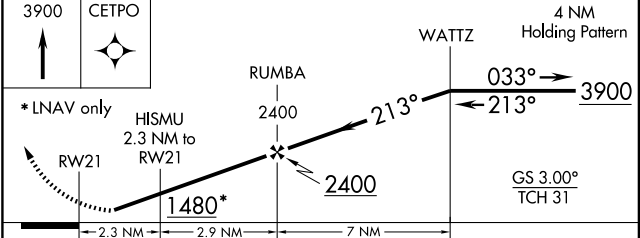
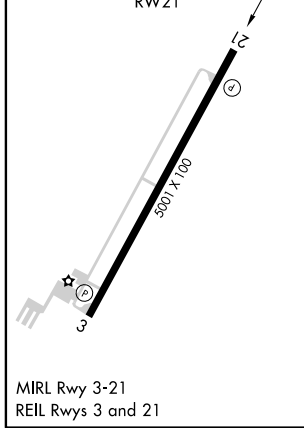
Baro-VNAV NA when using Chattanooga altimeter setting. For uncompensated Baro-VNAV systems, LNAV/VNAV NA below -16°C (4°F) or above 39°C (102°F). DME/DME RNP-0.3 NA. Visibility reduction by helicopters NA. When VGSI inop, Straight-in/Circling Rwy 21 NA at night. When local altimeter setting not received, use Chattanooga altimeter setting and increase all DA 75 feet and all MDA 80 feet; increase LPV all Cats and LNAV/VNAV all Cats visibility ¼ mile, LNAV Cat C and D visibility ½ mile and Circling Cat C and D visibility ¼ mile.

MISSED APPROACH: Climb to 3900 direct CETPO and hold, continue climb-in-hold to 3900.

AWOS-3 135.075	CHATTANOOGA APP CON * 125.1 379.1	UNICOM 123.0 (CTAF)
--------------------------	---	-------------------------------



ELEV 718	THRE 718
-----------------	-----------------



CATEGORY	A	B	C	D
LPV DA	1010-1 292 (300-1)			
LNAV/VNAV DA	1174-1½ 456 (500-1½)			
LNAV MDA	1140-1	422 (500-1)	1140-1¼	422 (500-1¼)
CIRCLING	1380-1 662 (700-1)	1420-1 702 (800-1)	1420-2 702 (800-2)	1420-2¼ 702 (800-2¼)

SE-1, 31 MAY 2012 to 28 JUN 2012

SE-1, 31 MAY 2012 to 28 JUN 2012

