

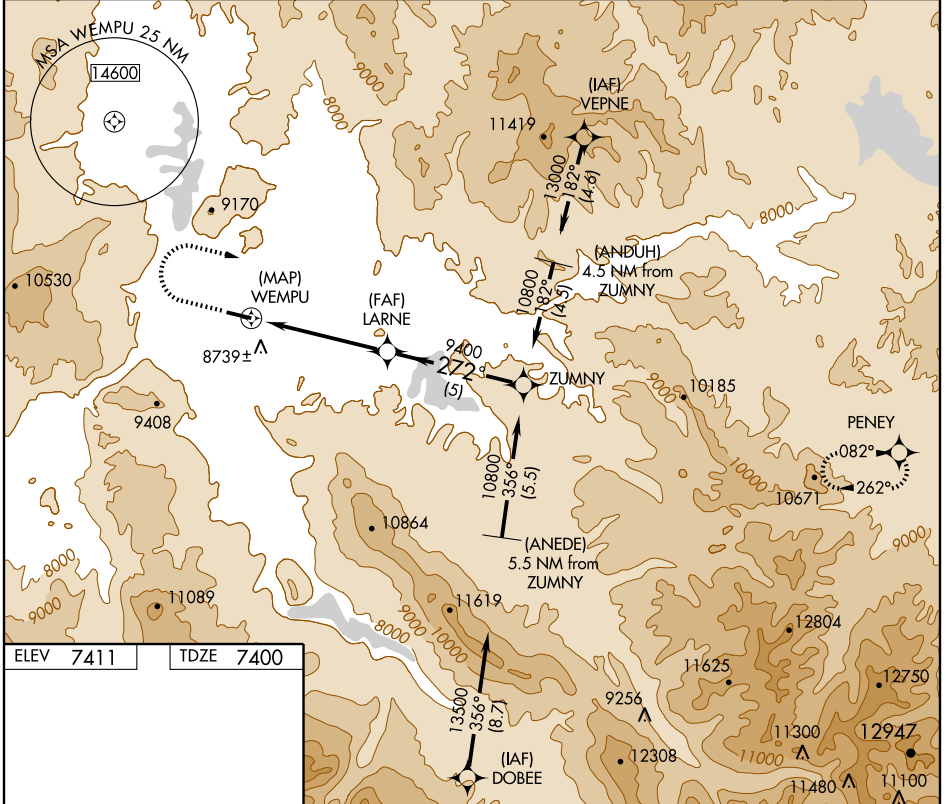
GPS RWY 27

KREMMLING/MC ELROY AIRFIELD (20V)

APP CRS 272°	Rwy Idg 5540
	TDZE 7400
	Apt Elev 7411

<p>▽ Obtain local altimeter setting on UNICOM 122.8; when not available, procedure not authorized.</p>	<p>MISSED APPROACH: Climb to 9600 then climbing right turn to 15500 direct PENEY WP and hold.</p>
---	--

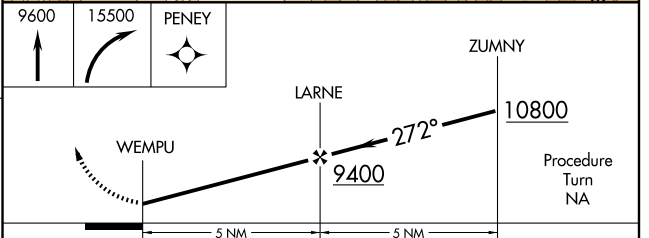
AWOS-3 118.425	DENVER CENTER 128.65 282.2	UNICOM 122.8 (CTAF)
--------------------------	--------------------------------------	-------------------------------



SW-1, 31 MAY 2012 to 28 JUN 2012

SW-1, 31 MAY 2012 to 28 JUN 2012

ELEV 7411	TDZE 7400
-----------	-----------



CATEGORY	A	B	C	D
S-27	9180-1¼ 1780 (1800-1¼)	9180-1½ 1780 (1800-1½)	9180-3 1780 (1800-3)	NA
CIRCLING	9180-1¼ 1769 (1800-1¼)	9180-1½ 1769 (1800-1½)	9180-3 1769 (1800-3)	NA

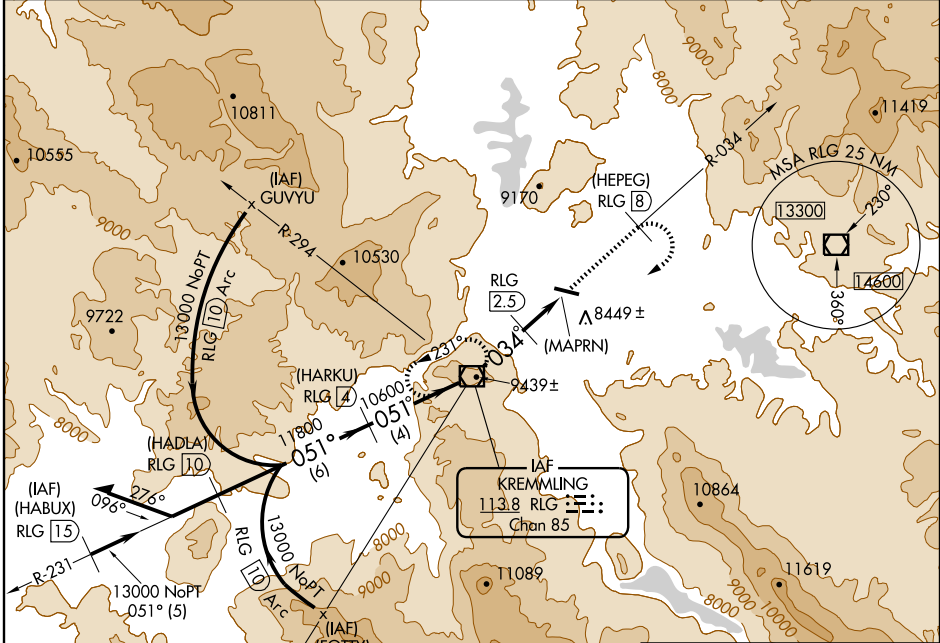
VOR/DME RLG 113.8 Chan 85	APP CRS 034°	Rwy Idg TDZE Apt Elev 7411	N/A N/A 7411
---	------------------------	--	---

VOR/DME or GPS-A
KREMMLING/MC ELROY AIRFIELD (20V)

⚠ NA Obtain local altimeter setting on CTAF; when not received procedure not authorized.

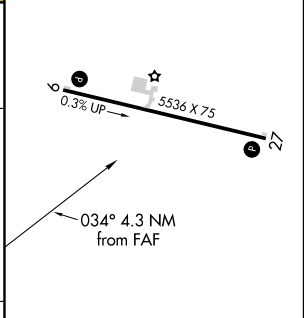
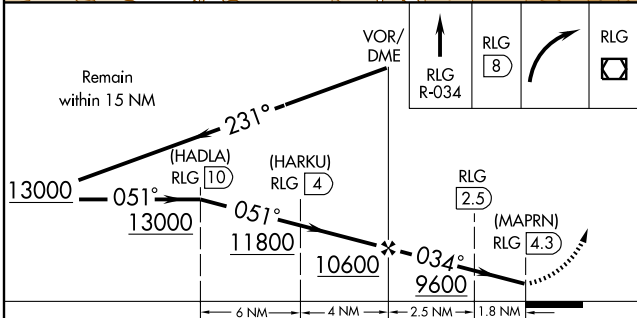
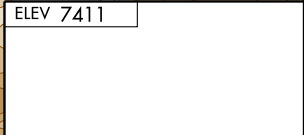
MISSED APPROACH: Climb to 8 DME via RLG R-034, then climbing right turn direct RLG VOR/DME. Continue climb to 13000 in holding pattern.

AWOS-3 118.425	DENVER CENTER 128.65 282.2	UNICOM 122.8 (CTAF)
--------------------------	--------------------------------------	-------------------------------



SW-1, 31 MAY 2012 to 28 JUN 2012

SW-1, 31 MAY 2012 to 28 JUN 2012



CATEGORY	A	B	C	D
CIRCLING	9040-1¼ 1629 (1700-1¼)	9180-1½ 1769 (1800-1½)	9180-3 1769 (1800-3)	NA

REIL Rwy 9 and 27
MIRL Rwy 9-27