

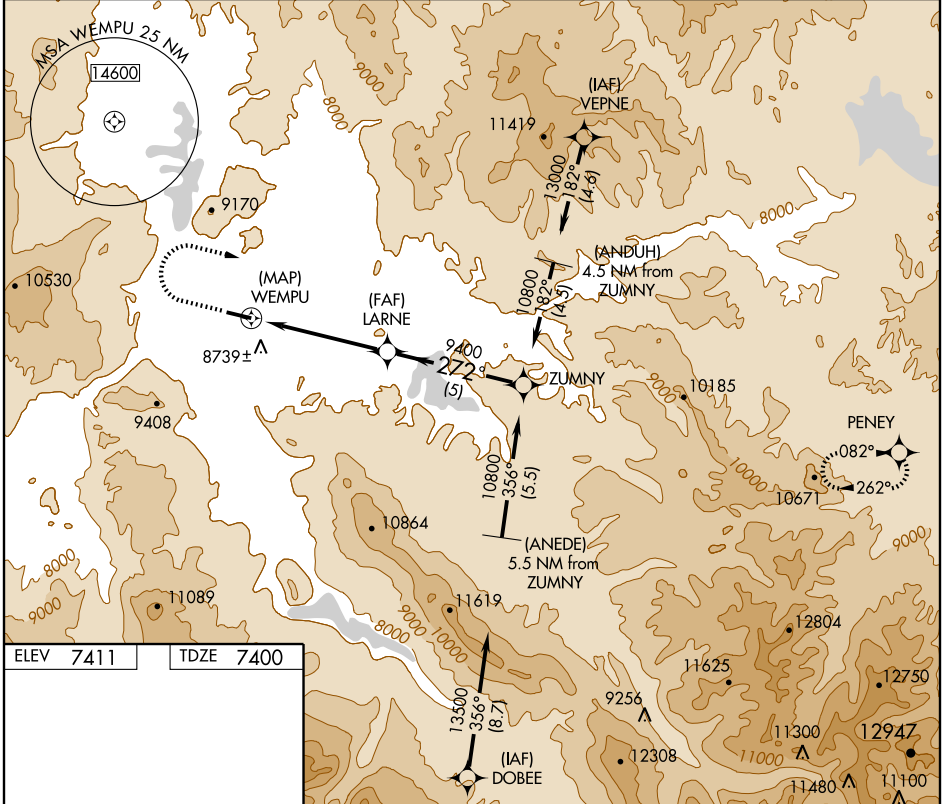
GPS RWY 27

KREMMLING/MC ELROY AIRFIELD (20V)

APP CRS 272°	Rwy Idg 5540
	TDZE 7400
	Apt Elev 7411

<p>▽ Obtain local altimeter setting on UNICOM 122.8; when not available, procedure not authorized.</p>	<p>MISSED APPROACH: Climb to 9600 then climbing right turn to 15500 direct PENNY WP and hold.</p>
---	--

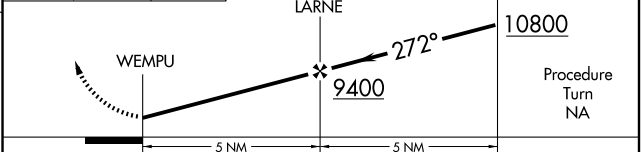
AWOS-3 118.425	DENVER CENTER 128.65 282.2	UNICOM 122.8 (CTAF)
--------------------------	--------------------------------------	-------------------------------



SW-1, 31 MAY 2012 to 28 JUN 2012

SW-1, 31 MAY 2012 to 28 JUN 2012

ELEV 7411	TDZE 7400
-----------	-----------



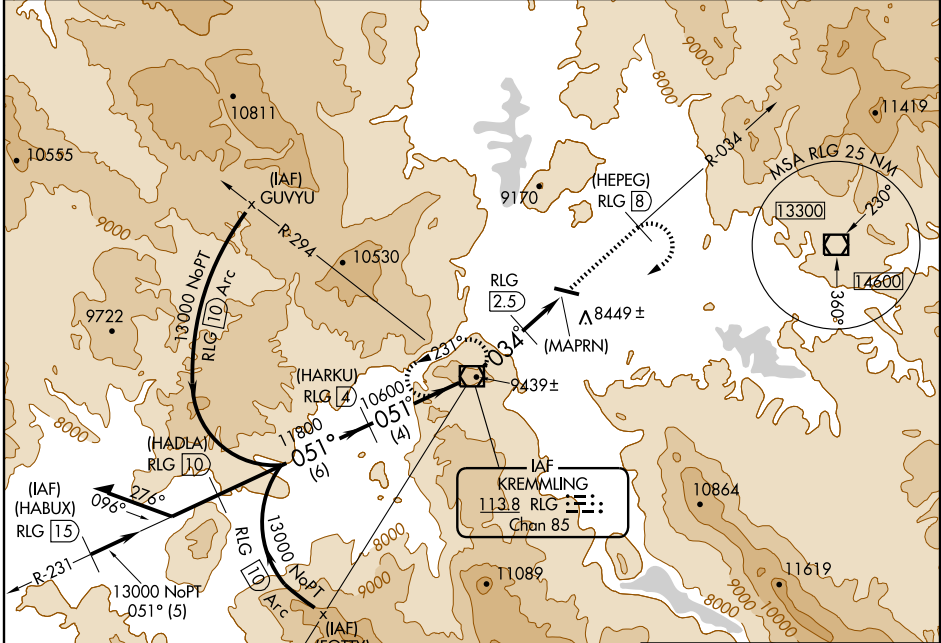
CATEGORY	A	B	C	D
S-27	9180-1¼ 1780 (1800-1¼)	9180-1½ 1780 (1800-1½)	9180-3 1780 (1800-3)	NA
CIRCLING	9180-1¼ 1769 (1800-1¼)	9180-1½ 1769 (1800-1½)	9180-3 1769 (1800-3)	NA

VOR/DME RLG 113.8 Chan 85	APP CRS 034°	Rwy Idg TDZE Apt Elev 7411	N/A N/A 7411
---	------------------------	--	---

VOR/DME or GPS-A
KREMMLING/MC ELROY AIRFIELD (20V)

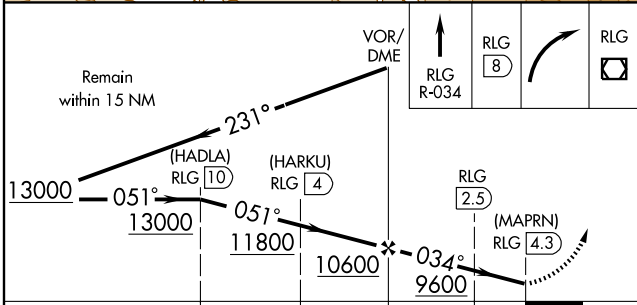
V Obtain local altimeter setting on CTAF; when not received procedure not authorized.
 MISSED APPROACH: Climb to 8 DME via RLG R-034, then climbing right turn direct RLG VOR/DME. Continue climb to 13000 in holding pattern.

AWOS-3 118.425	DENVER CENTER 128.65 282.2	UNICOM 122.8 (CTAF) 0
--------------------------	--------------------------------------	---

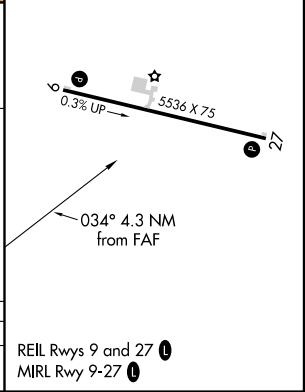


SW-1, 31 MAY 2012 to 28 JUN 2012

SW-1, 31 MAY 2012 to 28 JUN 2012



CATEGORY	A	B	C	D
CIRCLING	9040-1¼ 1629 (1700-1¼)	9180-1½ 1769 (1800-1½)	9180-3 1769 (1800-3)	NA



REIL Rwy 9 and 27 0
MIRL Rwy 9-27 0

TAKE-OFF MINIMUMS AND (OBSTACLE) DEPARTURE PROCEDURES

12152

IFR TAKE-OFF MINIMUMS AND (OBSTACLE) DEPARTURE PROCEDURES

Civil Airports and Selected Military Airports

ALL USERS: Airports that have Departure Procedures (DPs) designed specifically to assist pilots in avoiding obstacles during the climb to the minimum enroute altitude, and/or airports that have civil IFR take-off minimums other than standard, are listed below. Take-off Minimums and Departure Procedures apply to all runways unless otherwise specified. Altitudes, unless otherwise indicated, are minimum altitudes in MSL.

DPs specifically designed for obstacle avoidance are referred to as Obstacle Departure Procedures (ODPs) and are described below in text, or published separately as a graphic procedure. If the (Obstacle) DP is published as a graphic procedure, its name will be listed below, and it can be found in either this volume (civil), or the applicable military volume, as appropriate. Users will recognize graphic obstacle DPs by the term "(OBSTACLE)" included in the procedure title; e.g., TETON TWO (OBSTACLE). If not specifically assigned a departure procedure (i.e., ODP, SID, or radar vector) as part of an IFR clearance, an ODP may be required to be flown for obstacle clearance, even though not specifically stated in the IFR clearance. When doing so in this manner, ATC should be informed when the ODP being used contains a specified route to be flown, restrictions before turning, and/or altitude restrictions.

Graphic DPs designed by ATC to standardize traffic flows, ensure aircraft separation and enhance capacity are referred to as "Standard Instrument Departures (SIDs)". SIDs also provide obstacle clearance and are published under the appropriate airport section. ATC clearance must be received prior to flying a SID.

CIVIL USERS NOTE: Title 14 Code of Federal Regulations Part 91 prescribes standard take-off rules and establishes take-off minimums for certain operators as follows: (1) Aircraft having two engines or less - one statute mile. (2) Aircraft having more than two engines - one-half statute mile. These standard minima apply in the absence of any different minima listed below.

MILITARY USERS NOTE: Civil (nonstandard) take-off minima are published below. For military take-off minima, refer to appropriate service directives.

NAME TAKE-OFF MINIMUMS

AKRON, CO

COLORADO PLAINS RGNL (AKO)
ORIG 09127 (FAA)

NOTE: **Rwy 11**, rod on obstruction light on anemometer 314' from DER, 525' left of centerline, 26' AGL/4695' MSL. Lights on hangers 412' from DER, 301' left of centerline, 18' AGL/4687' MSL. **Rwy 29**, vehicles on roadway beginning 971' from DER, 315' left of centerline, 15' AGL/4741' MSL. Trees beginning 1651' from DER, 528' left of centerline, up to 100' AGL/4839' MSL.

ALAMOGORDO, NM

ALAMOGORDO-WHITE SANDS RGNL

TAKE-OFF MINIMUMS: **Rwy 16, 21, 34**, NA
DEPARTURE PROCEDURE: Use CORONA ONE Departure.

ALAMOS, CO

SAN LUIS VALLEY RGNL-BERGMAN FIELD

TAKE-OFF MINIMUMS: **Rwys 6, 24**, NA.
DEPARTURE PROCEDURE: **Rwy 2**, turn right. **Rwy 20**, turn left. Climb direct ALS VORTAC, continue climb in ALS VORTAC holding pattern (SE, right turns, 301° inbound) to depart ALS VORTAC at airway MEA/MCA, all others climb to 16000.

NAME TAKE-OFF MINIMUMS

ALBUQUERQUE, NM

ALBUQUERQUE INTL SUNPORT (ABQ)
AMDT 5 08157

TAKE-OFF MINIMUMS: **Rwy 3, 200** - 1 or std. w/min. climb of 240' per NM to 5600, or alternatively, with standard takeoff minimums and a normal 200' per NM climb gradient, takeoff must occur no later than 1900' prior to departure end of rwy, **Rwy 8**, std. w/min. climb of 515' per NM to 7800.

DEPARTURE PROCEDURE: **Rwys 3, 30, 35**, climbing left turn direct ABQ VORTAC. If required, continue climb in ABQ VORTAC holding pattern (hold west, left turn, 077° inbound) to cross ABQ VORTAC at or above MEA/MCA for route of flight. **Rwy 8**, climbing right turn direct ABQ VORTAC. If required, continue climb in ABQ VORTAC holding pattern (hold west, left turn, 077° inbound) to cross ABQ VORTAC at or above MEA/MCA for route of flight. (do not exceed 250 kts until ABQ VORTAC). **Rwys 12, 17, 21**, climbing right turn direct ABQ VORTAC. If required, continue climb in ABQ VORTAC holding pattern (hold west, left turn, 077° inbound) to cross ABQ VORTAC at or above MEA/MCA for route of flight. **Rwy 26**, climb direct ABQ VORTAC. If required, continue climb in ABQ VORTAC holding pattern (hold west, left turn, 077° inbound) to cross ABQ VORTAC at or above MEA/MCA for route of flight.

31 MAY 2012 to 28 JUN 2012

31 MAY 2012 to 28 JUN 2012

12152

TAKE-OFF MINIMUMS AND (OBSTACLE) DEPARTURE PROCEDURES

SW-1



ALBUQUERQUE, NM (CON'T)

ALBUQUERQUE INTL SUNPORT (CON'T)

NOTE: Rwy 3, light 549' from departure end of runway, 575' right of centerline, 29' AGL/5344' MSL. Light 2109' from departure end of runway, 1001' left of centerline, 67' AGL/5382' MSL. Multiple tanks beginning 4962' from departure end of runway, 1708' left of centerline, up to 154' AGL/ 5469' MSL. Rwy 12, electrical equipment 36' from departure end of runway, 214' right of centerline, 20' AGL/5315' MSL. Rwy 17, light 114' from departure end of runway, 360' right of centerline, 19' AGL/5328' MSL. Pole 248' from departure end of runway, 423' left of centerline, 32' AGL/5321' MSL. Rwy 21, terrain beginning 23' from departure end of runway, 277' left to 291' right of centerline, up to 5319' MSL. Rwy 30, tower 1057' from departure end of runway, 743' right of centerline, 93' AGL/5393' MSL. Rwy 35, light on fence 106' from departure end of runway, 11' right of centerline, 11' AGL/5326' MSL. Sign 165' from departure end of runway, 140' left of centerline, 13' AGL/5328' MSL. Vehicles on road 215' from departure end of runway, from left to right of centerline, up to 15' AGL/5335' MSL. Multiple trees beginning 314' from departure end of runway, 53' left of centerline, up to 50' AGL/5367' MSL. Multiple trees beginning 329' from departure end of runway, 172' right of centerline, up to 50' AGL/5362' MSL. Tower 3208' from departure end of runway, 860' right of centerline, 100' AGL/5410' MSL.

DOUBLE EAGLE II (AEG)

AMDT 1 08045 (FAA)

DEPARTURE PROCEDURE: Rwy 4, climb heading 035° to 11700 before turning right, all others turn left on course. Rwy 17, climb heading 169° to 9400 before turning left, all others turn right on course. Rwy 22, climb heading 215° to 9100 before turning left, all others turn right on course. Rwy 35, climb heading 349° to 11000 before turning right, all others turn left on course.

NOTE: Rwy 17, antenna 64' from departure end of runway, 395' left of centerline, 8' AGL/5807' MSL. Tree 3482' from departure end of runway, 1409' right of centerline, 100' AGL/5919' MSL. Rwy 35, antenna 53' from departure end of runway, 405' right of centerline, 9' AGL/5808' MSL.

ANGEL FIRE, NM

ANGEL FIRE (AXX)

AMDT 1 08213 (FAA)

TAKE-OFF MINIMUMS: Rwy 35, NA-obstacles. DEPARTURE PROCEDURE: Rwy 17, use ANEKE RNAV DEPARTURE.

ASPEN, CO

ASPEN-PITKIN COUNTY/SARDY FIELD (ASE)

AMDT 8 08269 (FAA)

TAKE-OFF MINIMUMS: Rwy 15, NA-terrain. DEPARTURE PROCEDURE: Rwy 33, use SARDD DEPARTURE.

BELEN, NM

ALEXANDER MUNI

TAKE-OFF MINIMUMS: Rwys 3,21, std. with min. climb of 326' per NM to 11700, or 2300-3 for climb in visual conditions. DEPARTURE PROCEDURE: Rwys 3, 21, for climb in visual conditions: cross Alexander Municipal Airport or above 7500.

BUCKLEY AFB (KBKF),

AURORA, CO 11013

Diverse departure not authorized. Use published departure procedures for obstacle avoidance.

BUENA VISTA, CO

CENTRAL COLORADO RGNL

TAKE-OFF MINIMUMS: Rwy 15, std. with a min. climb of 400' per NM to 8200 then 340' per NM to 15500. Rwy 33, NA-due to terrain. DEPARTURE PROCEDURE: Rwy 15, use PUEBLO RNAV DEPARTURE. Rwy 33, NA-due to terrain. NOTE: Rwy 15, tree 4468' from departure end of runway, 659' right of centerline, 60' AGL/8159' MSL.

BUTTS AAF (KFCS)

FORT CARSON, CO

. Rwy 31, 400-1*

* Or standard with a minimum climb of 210'/NM to 6100'. Rwy 13 climbing left turn heading 080° within 1 mile. Rwy 31 climbing right turn heading 80° within 1 mile. All aircraft continue climb via hdg 080° until joining V-81.

CANNON AFB (KCVS),

CLAVIS, NM. (12152 USAF)

Diverse departure authorized all runways. TAKE-OFF OBSTACLES: Rwy 4: Terrain 4304' MSL, 56' from DER, 500' left of centerline. Terrain 4304' MSL, 110' from DER, 529' left of centerline. Terrain 4304' MSL, 267' from DER, 568' left of centerline. Terrain 4327' MSL, 1064' from DER, 772' left of centerline. Terrain 4329' MSL, 1124' from DER, 801' left of centerline. Terrain 4327' MSL, 1187' from DER, 818' left of centerline. Rwy 13: Terrain 4281' MSL, 276' from DER, 532' left of centerline. Terrain 4284' MSL, 173' from DER, 546' left of centerline. Terrain 4280' MSL, 16' from DER, 500' left of centerline. Rwy 22: Terrain 4292' MSL, 554' from DER, 648' left of centerline. Terrain 4295' MSL, 537' from DER, 640' left of centerline. Rwy 31: Terrain 4297' MSL, 128' from DER, 500' right of centerline. Terrain 4309' MSL, 190' from DER, 551' right of centerline. Terrain 4309' MSL, 259' from DER, 500' right of centerline. Terrain 4311' MSL, 277' from DER, 505' right of centerline. Terrain 4314' MSL, 317' from DER, 585' right of centerline.

31 MAY 2012 to 28 JUN 2012

31 MAY 2012 to 28 JUN 2012



TAKE-OFF MINIMUMS AND (OBSTACLE) DEPARTURE PROCEDURES

12152

CANON CITY, CO FREMONT COUNTY

TAKE-OFF MINIMUMS: **Rwy 29**, 4600-2 or std. w/min. climb of 450' per NM to 10400.

DEPARTURE PROCEDURE: **Rwy 11**, climb runway heading. **Rwy 29**, turn left heading 115°. **All aircraft** intercept and climb via PUB VOR/DME R-262 (V244) PUB VOR/DME before proceeding on course.

CARLSBAD, NM

CAVERN CITY AIR TERMINAL (CNM) ORIG 11013 (FAA)

TAKE-OFF MINIMUMS: **Rwy 21**, std. w/min. climb of 206' per NM to 4300, or 1200-3 for climb in visual conditions. **Rwy 26**, std. w/min. climb of 241' per NM to 4500, or 1300-3 for climb in visual conditions. **Rwy 32L**, std. w/min. climb of 208' per NM to 4100.

DEPARTURE PROCEDURE: **Rwy 21**, for climb in visual conditions, cross Cavern City Air Terminal at or above 4300 before proceeding on course. **Rwys 26, 32L**, for climb in visual conditions, cross Cavern City Air Terminal at or above 4400 before proceeding on course. **Rwy 32R**, Climb heading 341° to 4100 before turning left.

NOTE: **Rwy 3**, bushes beginning 65' from DER, 344' right of centerline, up to 6' AGL/3254' MSL. Vehicle on road 388' from DER, 514' right of centerline, 15' AGL/3260' MSL. **Rwy 8**, pole 604' from DER, 192' right of centerline, 26' AGL/3264' MSL. **Rwy 14L**, bush 110' from DER, 216' left of centerline, 4' AGL/3246' MSL. Localizer 164' from DER, 458' right of centerline, 8' AGL/3250' MSL. Vehicle on road 398' from DER, 121' left of centerline, 15' AGL/3257' MSL. Pole 398' from DER, 129' left of centerline, 20' AGL/3265' MSL. Pole 520' from DER, 27' right of centerline, 24' AGL/3269' MSL. Vehicle on road 720' from DER, 462' right of centerline, 15' AGL/3260' MSL. Pole 837' from DER, 444' right of centerline, 26' AGL/3299' MSL. **Rwy 26**, bush 107' from DER, 193' left of centerline, 6' AGL/3276' MSL. **Rwy 32R**, fence 43' from DER, 333' left of centerline, 4' AGL/3273' MSL.

CLAYTON, NM

CLAYTON MUNI AIRPARK (CAO) AMDT 1 11125 (FAA)

TAKE-OFF MINIMUMS: **Rwy 2**, std. w/min. climb of 220' per NM to 6700. **Rwy 30**, std. w/min. climb of 257' per NM to 6700.

DEPARTURE PROCEDURE: **Rwy 20**, climb heading 201° to 5500 before turning right. **Rwy 30**, climb heading 301° to 6700 before turning left.

NOTE: **Rwy 20**, vehicle on road 106' from DER, crossing left to right, up to 15' AGL/4975' MSL.

CLOVIS, NM

CLOVIS MUNI (CVN) ORIG 11181 (FAA)

TAKE-OFF MINIMUMS: **Rwys 8, 26**, NA - environmental. NOTE: **Rwy 4**, vehicle on road 197' from DER, 452' left of centerline, 15' AGL/4228' MSL. **Rwy 12**, pole 436' from DER, 500' left of centerline, 33' AGL/4217' MSL.

Rwy 22, vehicle on road 267' from DER, 507' left of centerline, 15' AGL/4209' MSL. Poles beginning 1323' from DER, 268' right of centerline, up to 31' AGL/4240' MSL.

COLORADO SPRINGS, CO

CITY OF COLORADO SPRINGS MUNI (COS) AMDT 10 12096 (FAA)

TAKE-OFF MINIMUMS: **Rwy 31**, std. w/min. climb of 260' per NM to 7300. **Rwy 35L**, std. w/min. climb of 250' per NM to 7000. **Rwy 35R**, std. w/min. climb of 250' per NM to 7100.

DEPARTURE PROCEDURE: **Rwys 13, 17R, 17L**, climbing left turn direct BRK VOR/DME, thence... **Rwys 31, 35R, 35L**, climbing right turn direct BRK VOR/DME. Thence... All aircraft, climb direct BRK VOR/DME. Aircraft departing on BRK R-325 CW R-153 climb on course. All others climb in BRK holding pattern (hold NW, left turns, 154° inbound) to depart BRK VOR/DME at or above MEA/MCA for route of flight.

NOTE: **Rwy 13**, rising terrain 126' from DER, left and right of centerline, up to 6161' MSL. **Rwy 17R**, rising terrain 177' from DER, 503' left of centerline, up to 6059' MSL. **Rwy 31**, rising terrain 22' from DER, 499' right of centerline, up to 6191' MSL. **Rwy 35L**, rising terrain 337' from DER, 492' right of centerline, up to 6211' MSL. Trees beginning 810' from DER, 480' right of centerline, up to 30' AGL/6337' MSL.

CORTEZ, CO

CORTEZ MUNI (CEZ) AMDT 3 10098 (FAA)

DEPARTURE PROCEDURE: use LEDVE DEPARTURE.

CRAIG, CO

CRAIG-MOFFAT (CAG) AMDT 4 12096 (FAA)

TAKE-OFF MINIMUMS: **Rwy 7**, std. w/min. climb of 510' per NM to 7200, or 2400-3 for climb in visual conditions. **Rwy 25**, std. w/min. climb of 350' per NM to 8200, or 2400-3 for climb in visual conditions.

DEPARTURE PROCEDURE: **Rwy 7**, climb direct to CHE VOR/DME, or for climb in visual conditions, cross Craig-Moffat Airport at or above 8500 then proceed on CHE R-247 to CHE VOR/DME, thence.... **Rwy 25**, climbing right turn to intercept CHE VOR/DME radial 265 to CHE VOR/DME, or for climb in visual conditions, Cross Craig-Moffat Airport at or above 8500 then proceed on CHE R-247 to CHE VOR/DME, thence.... Aircraft departing CHE VOR/DME on radials 214° CW 296° climb on course. All other aircraft climb in holding pattern (hold NW, right turns, 108° inbound) to cross CHE VOR/DME at or above: radials 297° CW 076° 11500, radials 077° CW 114° 10200, radials 115° CW 213° 11600. When executing VCOA, notify ATC prior to departure.

NOTE: **Rwy 7**, vertical structure 108' from DER, 288' left of centerline, 18' AGL/6202' MSL. Multiple trees beginning 450' from DER, 211' left and right of centerline, up to 100' AGL/6276' MSL. Vehicles on road 104' from DER, 513' right to left of centerline, up to 15' AGL/6214' MSL. **Rwy 25**, vehicles on multiple roads beginning 5' from DER, 118' left and right of centerline, up to 15' AGL/6333' MSL. Fence 14' from DER, 499' right of centerline, 5' AGL/6190' MSL. Navigation aid 39' from DER, 93' right of centerline, 4' AGL/6189' MSL. Tree 362' from DER, 435' right of centerline, 100' AGL/6203' MSL. Multiple trees beginning 1457' from DER, 450' left of centerline, up to 100' AGL/6338' MSL. Multiple poles 796' from DER, 625' left of centerline, up to 40' AGL/6285' MSL. Terrain beginning 1941' from DER, 927' left of centerline, up to 6337' MSL. Multiple buildings beginning 5509' from DER, 552' left of centerline, up to 15' AGL/6338' MSL.

12152

TAKE-OFF MINIMUMS AND (OBSTACLE) DEPARTURE PROCEDURES



12152

DEMING, NM

DEMING MUNI (DMN)
AMDT 2A 11013 (FAA)

TAKE-OFF MINIMUMS: **Rwy 4**, NA.

DEPARTURE PROCEDURE: WESTBOUND: **Rwy 8**, climbing left turn heading 214°; **Rwy 22**, climbing right turn heading 302°; **Rwy 26**, climbing right turn heading 275°; intercept DMN VORTAC R-258 then via V94 on course. EASTBOUND: **Rwy 8**, climb direct DMN VORTAC; **Rwys 22, 26**, climbing right turn direct DMN VORTAC; then via V94 on course. NORTHBOUND: **Rwy 8**, climb direct DMN VORTAC; **Rwys 22, 26**, climbing right turn direct DMN VORTAC; then via V110 on course.

NOTE: **Rwy 22**, multiple trees and pole beginning 991' from DER, 139' right of centerline, up to 100' AGL/4380' MSL. **Rwy 26**, multiple trees beginning 35' from DER, 88' right of centerline, up to 100' AGL/4365' MSL. Multiple trees beginning 5' from DER, 37' left of centerline, up to 100' AGL/4355' MSL.

DENVER, CO

CENTENNIAL (APA)
AMDT 4 08213 (FAA)

TAKE-OFF MINIMUMS: **Rwy 17L**, std. w/ min. climb of 253' per NM to 6900. **Rwy 17R**, std. w/ min. climb of 370' per NM to 6900.

DEPARTURE PROCEDURE: **Rwy 10**, when departing on course between 159°CCW to 330° from departure end of runway climb heading 100° to 6300. All other courses: climbing left turn heading 326° to intercept DEN VOR/DME R-191 to DEN VOR/DME, thence ... **Rwys 17L, 17R**, climb on a heading between 346°CW to 159° from departure end of runway. All other courses: climbing left turn heading 331° to intercept DEN VOR/DME R-196 to DEN VOR/DME, thence ... **Rwy 28**, climb on a heading between 330°CW to 100° from departure end of runway. All other courses: climbing right turn heading 072° to intercept DEN VOR/DME R-207 to DEN VOR/DME, thence ... **Rwy 35L**, climb on a heading between 330°CW to 159° from departure end of runway. All other courses: climb heading 347° to intercept DEN VOR/DME R-208 to DEN VOR/DME, thence ...

... Climb in DEN VOR/DME holding pattern (hold south, right turns, 340° inbound) to 16500 before proceeding on course.

NOTE: **Rwy 10**, terrain beginning 238' from departure end of runway, 30' right of centerline, up to 5859' MSL. Fences beginning 1211' from departure end of runway, 233' right of centerline, up to 8' AGL/5841' MSL. Multiple bushes beginning 1378' from departure end of runway, 284' right of centerline, up to 6' AGL/5840' MSL. Multiple roads with vehicles beginning 198' from departure end of runway, 404' left of centerline, up to 15' AGL/5835' MSL. Terrain 1357' from departure end of runway, 253' left of centerline, 5829' MSL. **Rwy 17L**, multiple trees beginning 2968' from departure end of runway, 761' right of centerline, 100' AGL/5976' MSL. **Rwy 17R**, terrain 181' from departure end of runway, 496' right of centerline, 5887' MSL. Fence 538' from departure end of runway, 196' right of centerline, 8' AGL/5889' MSL. Multiple trees beginning 562' from departure end of runway, 61' right of centerline, up to 16' AGL/5976' MSL. Multiple light poles beginning 2362' from departure end of runway, 256' right of centerline, up to 30' AGL/5942' MSL. Vehicles on roads beginning 2812' from departure end of runway, on centerline, up to 17' AGL/5946' MSL. Obstruction light on building 3282' from departure end of runway, 842 feet right of centerline, 90' AGL/6021' MSL. **Rwy 28**, terrain beginning 89' from departure end of runway, from 513' left to 137' right of centerline, up to 5849' MSL. Windsock 100' from departure end of runway, 183' left of centerline, 15' AGL/5832' MSL. Multiple trees beginning 1640' from departure end of runway, 731' left of centerline, up to 100' AGL/5959' MSL. **Rwy 35L**, terrain beginning 54' from departure end of runway, 110' right of centerline, up to 5829' MSL.

31 MAY 2012 to 28 JUN 2012

31 MAY 2012 to 28 JUN 2012

12152



SW-1



DENVER, CO (CON'T)

DENVER INTL (DEN)

AMDT 2 08213 (FAA)

DEPARTURE PROCEDURE: **Rwy 7**, climb on a heading between 312°CW to 215° from departure end of runway. All other courses: climbing right turn, thence ... **Rwy 8**, climb on a heading between 307°CW to 218° from departure end of runway. All other courses: climbing right turn, thence ... **Rwys 16L, 16R**, climb on a heading between 210°CCW to 350° from departure end of runway. All other courses: climbing left turn, thence... **Rwys 17L, 17R**, climb on a heading between 219°CCW to 350° from departure end of runway. All other courses: climbing right turn, thence ... **Rwy 25**, climb on a heading between 314°CW to 080° or 203°CCW to 080° from departure end of runway. All other courses: climbing left turn, thence ... **Rwy 26**, climb on a heading between 310°CW to 080° or 216°CCW to 080° from departure end of runway. All other courses: climbing left turn, thence ... **Rwys 34L, 34R**, climb on a heading between 310°CW to 169° from departure end of runway. All other courses: climbing right turn, thence ... **Rwys 35L, 35R**, climb on a heading between 310°CW to 169° from departure end of runway. All other courses: climbing left turn, thence ...
... direct DEN VOR/DME, climb in DEN VOR/DME holding pattern (hold south, right turns, 340° inbound) to 16500 before proceeding on course.

NOTE: **Rwy 8**, multiple trees beginning 115' from departure end of runway, 444' right of centerline, up to 100' AGL/5389' MSL. **Rwy 16L**, tower 4722' from departure end of runway, 1359' left of centerline, 153' AGL/5473' MSL. Antenna on obstruction light tower 4746' from departure end of runway, 1358' left of centerline, 153' AGL/5473' MSL. **Rwy 17L**, multiple trees beginning 247' from departure end of runway, 543' right of centerline, up to 100' AGL/5489' MSL. **Rwy 17R**, multiple trees beginning 1457' from departure end of runway, 759' right of centerline, up to 100' AGL/5529' MSL. **Rwy 25**, multiple trees beginning 303' from departure end of runway, 557' right of centerline, up to 100' AGL/5439' MSL. **Rwy 34L**, multiple trees beginning 273' from departure end of runway, 537' right of centerline, up to 100' AGL/5399' MSL. **Rwy 34R**, multiple trees beginning 471' from departure end of runway, 580' right of centerline, up to 100' AGL/5449' MSL. **Rwy 35L**, terrain beginning 149' from departure end of runway, 34' right of centerline, up to 5414' MSL.

DENVER, CO (CON'T)

FRONT RANGE (FTG)

AMDT 2 08213 (FAA)

DEPARTURE PROCEDURE: **Rwy 8**, climb on a heading between 310°CW to 225° from departure end of runway. All other courses: climbing left turn, thence ... **Rwy 17**, climb on a heading between 350°CW to 226° from departure end of runway. All other courses: climbing right turn, thence ... **Rwy 26**, climb on a heading between 311°CW to 080° or between 224°CCW to 080° from departure end of runway. All other courses: climbing right turn, thence ... **Rwy 35**, climb on a heading between 310°CW to 169° from departure end of runway. All other courses: climbing left turn, thence ...

... Direct DEN VOR/DME, climb in DEN VOR/DME holding pattern (hold south, right turns, 340° inbound) to 16500 before proceeding on course.

NOTE: **Rwy 17**, multiple trees beginning 247' from departure end of runway, 534' left of centerline, up to 50' AGL/5629' MSL. Multiple trees beginning 293' from departure end of runway, 555' right of centerline, up to 50' AGL/5599' MSL. Pole 3618' from departure end of runway, 516' left of centerline, 92' AGL/5603' MSL. **Rwy 26**, multiple trees beginning 255' from departure end of runway, 317' left of centerline, up to 50' AGL/5499' MSL. Multiple trees beginning 272' from departure end of runway, 498' right of centerline, up to 50' AGL/5479' MSL.

ROCKY MOUNTAIN METROPOLITAN (BJC)

AMDT 4 08213 (FAA)

TAKE-OFF MINIMUMS: **Rwy 29L**, 200-1 or std. w/min. climb of 402' per NM to 5900.

DEPARTURE PROCEDURE: **Rwy 2**, climb on a heading between 350°CW to 160° from departure end of runway. All other courses: climbing right turn heading 147° to intercept DEN VOR/DME R-282 to DEN VOR/DME, thence ... **Rwys 11L, 11R**, climb on a heading between 160°CCW to 350° from departure end of runway. All other courses: climb heading 113° to intercept DEN VOR/DME R-272 to DEN VOR/DME, thence ... **Rwy 20**, climb on a heading between 160°CCW to 024° from departure end of runway. All other courses: climbing left turn heading 044° to intercept DEN VOR/DME R-269 to DEN VOR/DME, thence ... **Rwy 29R**, climb on a heading between 350°CW to 113° from departure end of runway. All other courses: climbing right turn heading 142° to intercept DEN VOR/DME R-277 to DEN VOR/DME, thence ... **Rwy 29L**, climb on a heading between 350°CW to 113° from departure end of runway. All other courses: Climbing right turn heading 142° to intercept DEN VOR/DME R-276 to DEN VOR/DME, thence ...

... climb in DEN VOR/DME holding pattern (hold south, right turns, 340° inbound) to 16500 before proceeding on course.

NOTE: **Rwy 2**, pole 432' from departure end of runway, 370' right of centerline, 49' AGL/5619' MSL. **Rwy 29L**, terrain beginning 45' from departure end of runway 292' left of centerline, up to 5839' MSL. Fence 1015' from departure end of runway 392' left of centerline, 15' AGL/5725' MSL. Fence 982' from departure end of runway 303' left of centerline, 14' AGL/5714' MSL. Multiple trees beginning 687' from departure end of runway 615' right of centerline up to 70' AGL/5839' MSL. Tree 3196' from departure end of runway 1337' left of centerline, 70' AGL/5839' MSL.

31 MAY 2012 to 28 JUN 2012

31 MAY 2012 to 28 JUN 2012



TAKE-OFF MINIMUMS AND (OBSTACLE) DEPARTURE PROCEDURES

12152

DURANGO, CO

DURANGO-LA PLATA COUNTY (DRO)

AMDT 6A 09015

TAKE-OFF MINIMUMS: **Rwy 3**, std. w/ a min. climb of 215' per NM to 7600, or 1700-3 for climb in visual conditions.

DEPARTURE PROCEDURE: **Rwy 3**, climbing right turn to 9000 heading 160° and DRO VOR/DME R-125 to RESER INT, or for climb in visual conditions: Cross Durango-La Plata County Airport Southeast bound at or above 8200 MSL, then proceed on DRO VOR/DME R-125 to RESER INT. **Rwy 21**, climbing right turn to 9500 heading 280° and DRO VOR/DME R-235 to MARKE INT.

NOTE: **Rwy 3**, trees beginning 1223' from departure end of runway, 794' left of centerline, up to 42' AGL/6741' MSL. Trees beginning 488' from departure end of runway, 431' right of centerline, up to 42' AGL/6698' MSL, vehicles on road beginning 8' from departure end of runway, right and left of centerline, up to 15' AGL/6706' MSL.

EAGLE, CO

EAGLE COUNTY RGNL (EGE)

AMDT 7 09239 (FAA)

DEPARTURE PROCEDURE: use GYPSUM DEPARTURE.

ERIE, CO

ELKO REGIONAL (EIK)

AMDT 2A 10294 (FAA)

TAKE-OFF MINIMUMS: **Rwy 15**, 500-2 or std. with a min. climb gradient of 270' per NM to 5700.

DEPARTURE PROCEDURE: **Rwy 15**, turn right; **Rwy 33**, turn left; climb direct BJC VOR/DME. Departures on BJC R-340 CW R-150 climb on course. All others climb in BJC holding pattern (NE, left turns 203° inbound) to cross BJC VOR/DME at or above 13300, or comply with RADAR vectors.

FARMINGTON, NM

FOUR CORNERS RGNL (FMN)

AMDT 1 10210 (FAA)

DEPARTURE PROCEDURE: **Rwys 5, 23, 25**, climbing right turn direct RSK VORTAC. Continue climb in RSK VORTAC holding pattern (hold East, left turn, 252° inbound) to cross RSK VORTAC at or above MEA for route of flight. **Rwy 7**, climb direct RSK VORTAC. Continue climb in RSK VORTAC holding pattern (hold East, left turn, 252° inbound) to cross RSK VORTAC at or above MEA for route of flight.

NOTE: **Rwy 5**, sign 27' from DER, 464' right of centerline, 13' AGL/5513' MSL. Building 4005' from DER, 654' right of centerline, 96' AGL/5608' MSL.

Rwy 25, sign 37' from DER, 218' left of centerline, 10' AGL/5479' MSL. Obstruction light on DME 200' from DER, 442' left of centerline, 24' AGL/5493' MSL. Sign 37' from DER, 218' left of centerline, 10' AGL/5479' MSL.

FORT COLLINS, CO

FORT COLLINS-LOVELAND MUNI (FNL)

AMDT 5 08213 (FAA)

TAKE-OFF MINIMUMS: **Rwys 6, 24**, NA-VFR runway. DEPARTURE PROCEDURE: **Rwy 15**, climb on heading between 117° CW to 329° from departure end of runway. All other courses: climbing left turn heading 017° to intercept GLL VOR/DME R-242 to GLL VOR/DME, thence... **Rwy 33**, climb on heading between 323° CW to 148° from departure end of runway. All other courses: climbing right turn heading 122° to intercept GLL VOR/DME R-257 to GLL VOR/DME, thence... climb in GLL VOR/DME holding pattern (hold NE, right turns, 205° inbound) to 16500 before proceeding on course.

NOTE: **Rwy 33**, multiple trees beginning 833' from departure end of runway, 516' right of centerline, up to 66' AGL/5025' MSL. Multiple poles beginning 567' from departure end of runway, 540' left of centerline, up to 26' AGL/4995' MSL.

GALLUP, NM

GALLUP MUNI

TAKE-OFF MINIMUMS: **Rwy 6**, CAT A, B 1300-2 or std. with a min. climb of 300' per NM until passing 8000. CAT C, D 1600-3 or std. with a min. climb of 320' per NM until passing 8500. **Rwy 24**, 700-2 or std. with a min. climb of 370' per NM until passing 8000.

DEPARTURE PROCEDURE: **Rwy 6**, turn left. **All aircraft** climb direct GUP VORTAC. Departures via GUP R-190 CW R-242 climb on course. Departures via GUP R-243 CW R-189 climb in GUP holding pattern (SW, right turns, 047° inbound) to cross GUP at or above 9000.

GRAND JUNCTION, CO

GRAND JUNCTION RGNL (GJT)

AMDT 11 08269 (FAA)

TAKE-OFF MINIMUMS: **Rwy 4**, NA-obstacles. **Rwy 22**, NA-obstacles, facility reception (JNC VOR/DME). DEPARTURE PROCEDURE: **Rwys 11, 29**, use MONUMENT DEPARTURE.

GRANTS, NM

GRANTS-MILAN MUNI

TAKE-OFF MINIMUMS: **Rwy 13**, 2400-2 or std. with a min. climb of 420' per NM to 11000. **Rwy 31**, NA.

DEPARTURE PROCEDURE: **Rwy 13**, climb runway heading to join V12 at or above 11000 before proceeding on course.

31 MAY 2012 to 28 JUN 2012

31 MAY 2012 to 28 JUN 2012

12152

TAKE-OFF MINIMUMS AND (OBSTACLE) DEPARTURE PROCEDURES

SW-1



GREELEY, CO

GREELEY-WELD COUNTY (GXY)

AMDT 3 08241 (FAA)

DEPARTURE PROCEDURE: Rwy 9, climb on a heading between 289°CW to 211° from departure end of runway. All other courses: climbing left turn, thence... Rwy 16, climb on a heading between 209°CCW to 347° from departure end of runway. All other courses: climbing left turn, thence... Rwy 27, climb on a heading between 291° CW to 094° or 206°CCW to 094° from departure end of runway. All other courses: climbing right turn, thence... Rwy 34, climb on a heading between 290°CW to 166° from departure end of runway. All other courses: climbing right turn, thence...

...direct GLL VOR/DME, climb in GLL VOR/DME holding pattern (hold NE, right turns, 205° inbound) to 16500 before proceeding on course.

NOTE: Rwy 27, tree 1634' from departure end of runway, 836' left of centerline, 56' AGL/4717' MSL, fence 237' from departure end of runway, 422' right of centerline, 9' AGL/4670' MSL, fence 99' from departure end of runway, 423' left of centerline, 4' AGL/4665' MSL. Rwy 34, multiple trees beginning 1860' from departure end of runway, 595' right of centerline, up to 67' AGL/4785' MSL, tree 2854' from departure end of runway, 524' left of centerline, 73' AGL/4770' MSL.

GUNNISON, CO

GUNNISON-CRESTED BUTTE RGNL (GUC)

AMDT 7 11041 (FAA)

TAKE-OFF MINIMUMS: Rwy 6, std. w/ min. climb of 500' per NM to 9500, or 2000-3 for climb in visual conditions. Rwy 24, std. w/ min. climb of 420' per NM to 9300, or 2000-3 for climb in visual conditions. Rws 17, 35, NA-Obstacles.

DEPARTURE PROCEDURE: Rwy 6, climb heading 077° to 9500 then climbing right turn direct HBU VOR/DME, thence... or, for climb in visual conditions, cross Gunnison-Crested Butte RGNL Airport at or above 9500, then on HBU R-031 to HBU VOR/DME, thence... Rwy 24, climb heading 242° to 9300 then climbing left turn direct HBU VOR/DME, thence... or, for climb in visual conditions, cross Gunnison-Crested Butte RGNL Airport at or above 9500, then on HBU R-031 to HBU VOR/DME, thence... climb in HBU VOR/DME holding pattern (hold SW, left turns, 031° inbound) to depart HBU VOR/DME at or above MEA for route of flight.

NOTE: Rwy 6, trees beginning 669' from DER, 76' left of centerline, up to 100' AGL/8179' MSL. Bush 1.7 NM from DER, 2683' left of centerline, 9' AGL/8048' MSL. Pole 6093' from DER, 1950' left of centerline, 31' AGL/7850' MSL. Rising terrain beginning 1.5 NM from DER, 1787' left of centerline, up to 8009' MSL. Tree 669' from DER, on centerline, 30' AGL/7707' MSL. Trees beginning 240' from DER, 395' right of centerline, up to 26' AGL/7705' MSL. Pole 1.6 NM from DER, 359' right of centerline, 34' AGL/7933' MSL. Bushes beginning 73' from DER, 456' right of centerline, up to 21' AGL/7700' MSL. Obstruction light 509' from DER, 256' right of centerline, 18' AGL/7697' MSL. Vehicle 22' from DER, 426' right of centerline 15' AGL/7702' MSL. Rwy 24, trees beginning 400' from DER, 321' left of centerline, up to 100' AGL/7979' MSL. Trees beginning 501' from DER, 458' right of centerline, up to 100' AGL/7879' MSL. Poles beginning 3069' from DER, 902' right of centerline, up to 21' AGL/7800' MSL. Rising terrain beginning 2628' from DER, 1115' right of centerline, up to 7792' MSL.

HAYDEN, CO

YAMPA VALLEY (HDN)

AMDT 3 09183 (FAA)

TAKE-OFF MINIMUMS: Rwy 10, std. w/ min. climb of 400' per NM to 12200, or 3200-3 for climb in visual conditions. Rwy 28, std. w/ min. climb of 245' per NM to 9500, or 3200-3 for climb in visual conditions.

DEPARTURE PROCEDURE: Rwy 10, climb on heading 147° to 12200 before proceeding on course.

Rwy 28, climb on heading 238° to 9500 before proceeding on course. Rws 10, 28, for climb in visual conditions: cross Yampa Valley airport at or above 9700 before proceeding on course.

NOTE: Rwy 10, tree 241' from DER, 420' right of centerline, 100' AGL/6699' MSL. Tree 644' from DER, 340' left of centerline, 100' AGL/6699' MSL. Multiple transmission towers, beginning 3606' from DER, left to right of centerline, up to 145' AGL/6745' MSL. Terrain beginning 1714' from DER, 707' right of centerline, up to 6676' MSL.

HOBBS, NM

LEA COUNTY RGNL

TAKE-OFF MINIMUMS: Rwy 8, std. w/ a min. climb of 218' per NM to 4300, or alternatively, with standard takeoff minimums and a normal 200'/NM climb gradient, takeoff must occur no later than 1600' prior to departure end of runway.

NOTE: Rwy 3, multiple trees beginning 546' from departure end of runway, 811' right of centerline, up to 40' AGL/3700' MSL. Sign 822' from departure end of runway, 694' left of centerline, 38' AGL/3676' MSL.

Rwy 8, tower 3 NM from departure end of runway, 2587' right of centerline, 515' AGL/4120' MSL. Rwy 12, road at departure end of runway, 112' right of centerline, 15' AGL/3654' MSL. Rwy 17, obstruction light on glideslope, 1014' from departure end of runway, 486' right of centerline, 37' AGL/3687' MSL. Rwy 21, tree 1304' from departure end of runway, 726' right of centerline, 46' AGL/3690' MSL. Rwy 26, road 253' from departure end of runway, across centerline, 15' AGL/3669' MSL. Rwy 30, wind sock 103' from departure end of runway, 280' left of centerline, 16' AGL/3675' MSL, pole 1035' from departure end of runway, 540' right of centerline, 25' AGL/3689' MSL. Rwy 35, multiple fences, roads and poles beginning 103' from departure end of runway, across centerline, up to 37' AGL/3696' MSL, pole 299' from departure end of runway, 495' left of centerline, 25' AGL/3689' MSL, pole 293' from departure end of runway, 94' right of centerline, 25' AGL/3682' MSL.

31 MAY 2012 to 28 JUN 2012

31 MAY 2012 to 28 JUN 2012





HOLLOMAN AFB (KHMN),

ALAMOGORDO, NMORIG, 08101

- Rwy 7, NA
- Rwy 16, 8000-3*
- Rwy 22, 8000-3**
- Rwy 25, 8000-3*
- Rwy 34, 8000-3***

* Or standard with minimum climb of 510/NM to 14,100.

** Or standard with minimum climb of 470/NM to 14,100.

*** Or standard with minimum climb of 490/NM to 14,100.

Rwy 16, 22, 25, 34, RADAR REQUIRED (when R-5103C not under Holloman Approach or Cherokee control).

TAKE-OFF OBSTACLES: **Rwy 16**, Terrain 4052' MSL, 46' from DER, 512' left of centerline; Terrain 4052' MSL, 16' from DER, 500' left of centerline; Terrain 4052' MSL, 12' from DER, 503' left of centerline; Vehicle on road 15' AGL/4180' MSL, 589' from DER, 1170' right of centerline; Building 17' AGL/4070' MSL, 67' from DER, 283' right of centerline. **Rwy 22**, Terrain 4058' MSL, 4' from DER, 63' left of centerline; Terrain 4060' MSL, 427' from DER, 534' right of centerline; Terrain 4059' MSL, 0' from DER, 500' right of centerline; Vehicle on road 10' AGL/4190' MSL, 1963' from DER, 422' right of centerline; Vehicle on road 10' AGL/4190' MSL, 1977' from DER, 90' right of centerline. **Rwy 25**, Vehicle on road 10' AGL/4190' MSL, 4387' from DER, 14' left of centerline; Vehicle on road 10' AGL/4190' MSL, 4225' from DER, 303' left of centerline; Vehicle on road 15' AGL/4190' MSL, 1812' from DER, 1464' left of centerline.

HOLYOKE, CO

HOLYOKE (HEQ)

AMDT 1 11349 (FAA)

TAKE-OFF MINIMUMS: **Rwy 32**, 300-1 or std. w/min. climb of 280' per NM to 4000.

NOTE: **Rwy 14**, trees 2011' from DER, 29' left of centerline, 100' AGL/3829' MSL. **Rwy 32**, trees 1009' from DER, 697' left of centerline, 100' AGL/3839' MSL. Tower 4448' from DER, 1036' left of centerline, 165' AGL/3886' MSL.

KREMMLING, CO

MC ELROY AIRFIELD

TAKE-OFF MINIMUMS: **Rwy 9**, 2600-2 or std. with a min. climb of 370' per NM to 12700. **Rwy 27**, 3200-2 or std. with a min. climb of 500' per NM to 12700.

DEPARTURE PROCEDURE: **Rwy 9**, climb runway heading to 10000, then climbing right turn. **Rwy 27**, climb runway heading to 10900, then climbing left turn. **All aircraft** proceed direct RLG VOR/DME. Continue climb to 13,000 in RLG holding pattern (hold SW, left turns, 051° inbound).

LA JUNTA, CO

LA JUNTA MUNI

DEPARTURE PROCEDURE: **Rwy 8**, climb via heading 080°; **Rwy 12**, climb via heading 120°; **Rwy 26**, turn left heading 160°; **Rwy 30**, turn left heading 140°.

All aircraft, intercept LAA R-238 (V210) to LAA VOR/DME. When at or above 8000 proceed on course.

LAMAR, CO

LAMAR MUNI

DEPARTURE PROCEDURE: **Rwys 8, 36**, turn left.

Rwy 18, turn left/right. **Rwy 26**, turn right. Direct LAA VOR/DME. Aircraft departing LAA R-048 CW R-118 climb on course. All others continue climbing in LAA holding pattern (N, right turns, 169° inbound) to 6000 before proceeding on course.

LAS CRUCES, NM

LAS CRUCES INTL

DEPARTURE PROCEDURE: **Rwys 4, 8**, climbing right turn. **Rwy 12**, CAT A, B, climb runway heading CAT C, D, NA. **Rwys 22, 26**, climbing left turn. **Rwy 30**, climbing runway heading to 5100 then climbing left turn.

All aircraft climb direct HAWKE LOM. Continue climb in HAWKE holding pattern (SE, left turns, 304° inbound) to cross HAWKE LOM at or above 10000 before proceeding on course.

LAS VEGAS, NM

LAS VEGAS MUNI

DEPARTURE PROCEDURE: **Rwys 2, 14** turn left/right. **Rwy 20**, turn left (except via FTIR-215). **Rwy 32**, turn right.

Departures via FTI VORTAC R-001 CW R-215 climb on course. Departures via FTI VORTAC R-216 CW R-360 proceed direct FTI VORTAC. Climb in FTI VORTAC holding pattern (hold north, left turn, 192° inbound) to cross FTI at airway MEA/MCA. (NOTE: climb in hold not authorized for turbojet aircraft)

LEADVILLE, CO

LAKE COUNTY (LXV)

AMDT 2 08101 (FAA)

DEPARTURE PROCEDURE: **Rwy 16**, use LOZUL (RNAV) DEPARTURE. **Rwy 34**, use DAVVY (RNAV) DEPARTURE.

LONGMONT, CO

VANCE BRAND (LMO)

AMDT 1 12040 (FAA)

DEPARTURE PROCEDURE: **Rwy 11**, climbing left turn to intercept GLL VOR/DME R-221 to 7000 ... **Rwy 29**, climbing right turn to intercept GLL VOR/DME R-221 to 7000 ...

... All aircraft proceed on GLL R-221 to GLL VOR/DME. Cross GLL VOR/DME at or above MEA/MCA for route of flight.

NOTE: **Rwy 11**, trees beginning 130' from DER, 191' right of centerline, up to 80' AGL/5119' MSL. Vehicles on roadway, 449' from DER, 395' left and right of centerline, 17' AGL/5046' MSL. Trees beginning 1383' from DER, 434' left of centerline, up to 80' AGL/5109' MSL. **Rwy 29**, trees beginning 4105' from DER, 220' left of centerline, up to 80' AGL/5189' MSL.

31 MAY 2012 to 28 JUN 2012

31 MAY 2012 to 28 JUN 2012



TAKE-OFF MINIMUMS AND (OBSTACLE) DEPARTURE PROCEDURES

12152

LOS ALAMOS, NM

LOS ALAMOS (LAM)

AMDT 1 12152 (FAA)

TAKE-OFF MINIMUMS: **Rwy 27**, NA-obstacles and airport restriction.

DEPARTURE PROCEDURE: **Rwy 9**, climb heading 092° to intercept SAFR-354. Northbound climbing to 11000 on V83. Southbound climbing to 9000 on V83.

NOTE: **Rwy 9**, terrain and trees beginning 101' from DER, 178' left and right of centerline, up to 60' AGL/7139' MSL.

LOVINGTON, NM

LEA COUNTY-ZIP FRANKLIN MEMORIAL

DEPARTURE PROCEDURE: **Rwy 3**, climb runway heading to 4700 before turning on course. **Rwy 12**, 35' AGL powerline 1250' from departure end of runway 150' right of centerline. **Rwy 21**, 40' AGL tower 936' from departure end of runway 273' right of centerline. **Rwy 30**, 50' AGL windmill 1800' from departure end of runway 50' right of centerline.

MEEKER, CO

MEEKER (EEO)

AMDT 1 08157

TAKE-OFF MINIMUMS: **Rwys 3, 21**, 4100-3 for climb in visual conditions.

DEPARTURE PROCEDURE: **Rwys 3, 21**, for climb in visual conditions: cross Meeker Airport at or above 10500 before proceeding on course.

NOTE: **Rwy 21**, multiple trees beginning 843' from departure end of runway, 20' left of centerline, up to 100' AGL/7190' MSL. Multiple trees beginning 227' from departure end of runway, 187' right of centerline, up to 100' AGL/6862' MSL.

MONTE VISTA, CO

MONTE VISTA MUNI

DEPARTURE PROCEDURE: **Rwy 2**, climbing right turn.

Rwy 20, climbing left turn. **All aircraft**, climb direct ALS VORTAC, continue climb in ALS holding pattern (SE, right turns, 301° inbound) to cross ALS VORTAC at or above 11,000, except V210 westbound 11,200 and J102 northeastbound 13,700, before proceeding enroute.

MONTROSE, CO

MONTROSE RGNL (MTJ)

AMDT 4 09127 (FAA)

DEPARTURE PROCEDURE: Use MONTROSE DEPARTURE.

NUCLA, CO

HOPKINS FIELD

TAKE-OFF MINIMUMS: **Rwys 11, 29**, NA-environmental

DEPARTURE PROCEDURE: **Rwys 5, 23**, use NUCLA (RNAV) DEPARTURE.

PAGOSA SPRINGS, CO

STEVENS FIELD (PSO)

ORIG 08045 (FAA)

TAKE-OFF MINIMUMS: **Rwy 1**, std. w/ min. climb of 437' per NM to 9600, or 1900-3 for climb in visual conditions. **Rwy 19**, std. w/ min. climb of 296' per NM to 9300, or 1900-3 for climb in visual conditions.

DEPARTURE PROCEDURE: **Rwy 1**, climbing right turn via heading 216° to intercept DRO VOR/DME R-066 to DRO VOR/DME for climb in visual conditions cross Stevens Field airport south bound at or above 9400 MSL, then via DRO VOR/DME R-066 to DRO VOR/DME **Rwy 19**, climb via heading 194° to intercept DRO VOR/DME R-075 to DRO VOR/DME for climb in visual conditions cross Stevens Field airport south bound at or above 9400 MSL, then via DRO VOR/DME R-066 to DRO VOR/DME

... thence cross DRO VOR/DME at MEA/MCA for direction of flight before proceeding on course.

NOTE: **Rwy 1**, terrain beginning 30' from departure end of runway, 53' left of centerline, up to 7697' MSL. Terrain beginning 127' from departure end of runway, 69' right of centerline, up to 7681' MSL. Multiple trees beginning 940' from departure end of runway, left and right of centerline, up to 100' AGL/7739' MSL. **Rwy 19**, multiple trees beginning 664' from departure end of runway, 156' left of centerline, up to 100' AGL/7693' MSL. Multiple trees beginning 1625' from departure end of runway, 5' right of centerline, up to 100' AGL/7698' MSL.

PORTALES, NM

PORTALES MUNI (PRZ)

ORIG 12152 (FAA)

NOTE: **Rwy 8**, train on tracks, 624' from DER, left and right of centerline, up to 23' AGL/4087' MSL. Terrain beginning 35' from DER, left and right of centerline, 4064' MSL. Vehicles on road, 794' from DER, left and right of centerline, up to 17' AGL/4081' MSL. **Rwy 19**, terrain beginning 13' from DER, left and right of centerline, 4080' MSL. **Rwy 26**, terrain beginning 15' from DER, left and right of centerline, 4074' MSL.

31 MAY 2012 to 28 JUN 2012

31 MAY 2012 to 28 JUN 2012

12152

TAKE-OFF MINIMUMS AND (OBSTACLE) DEPARTURE PROCEDURES

SW-1

TAKE-OFF MINIMUMS AND (OBSTACLE) DEPARTURE PROCEDURES

12152

PUEBLO, CO

PUEBLO MEMORIAL (PUB)

AMDT 5 12096 (FAA)

TAKE-OFF MINIMUMS: **Rwy 35**, 400-2¼ or std. w/min. climb of 290' per NM to 5200.

DEPARTURE PROCEDURE: **Rwy 8L**, climb heading 077° to 5500, then climbing left turn direct PUB R-040 to PUB VOR/DME, thence ... **Rwy 8R**, climb heading 077° to 5400, then climbing left turn direct PUB R-040 to PUB VOR/DME, thence ... **Rwy 17**, climb heading 167° to 5800, then climbing left turn on heading 050° and PUB R-180 to PUB VOR/DME, thence ... **Rwy 26L**, climb heading 257° to 5700, then climbing left turn on heading 070° and PUB R-220 to PUB VOR/DME, thence ...

Rwy 26R, climb heading 257° to 5700, then climbing left turn on heading 070° and PUB R-220 to PUB VOR/DME, thence ... **Rwy 35**, climb heading 347° to 5200, then climbing right turn on heading 150° and PUB R-360 to PUB VOR/DME, thence ...

... Continue climb in PUB VOR/DME holding pattern (hold NE, right turns, 244° inbound) to cross PUB VOR/DME at or above MEA for route of flight.

NOTE: **Rwy 8L**, rising terrain 378' from DER, 594' left of centerline, up to 4659' MSL. **Rwy 8R**, rising terrain 90' from DER, 354' left of centerline, up to 4659' MSL.

Rwy 17, pole 666' from DER, 661' right of centerline, 46' AGL/4676' MSL. **Rwy 26L**, rising terrain 24' from DER, left and right of centerline, up to 4667' MSL. **Rwy 26R**, rising terrain 25' from DER, 447' right of centerline, up to 4679' MSL. **Rwy 35**, rising terrain 178' from DER, left and right of centerline, up to 5006' MSL. Trees beginning 2793' from DER, 1222' right of centerline, up to 15' AGL/5024' MSL. Bushes beginning 23' from DER, right and left of centerline, up to 13' AGL/4750' MSL. Transmission line towers beginning 1.1 NM from DER, left and right of centerline, up to 57' AGL/4950' MSL. Radar reflector 995' from DER, on centerline, 4' AGL/4757' MSL.

RATON, NM

RATON MUNI/CREWS FIELD (RTN)

AMDT 1 11097 (FAA)

TAKE-OFF MINIMUMS: **Rwy 2**, std. w/min. climb of 251' per NM to 9600 or 2100-3 for climb in visual conditions.

Rwy 7, std. w/min. climb of 367' per NM to 9300 or 2100-3 for climb in visual conditions.

DEPARTURE PROCEDURE: **Rwy 2**, climbing right turn heading 090° and CIM VORTAC R-040 Northeast bound to airway MEA, then on course to assigned altitude, or for climb in visual conditions, cross Raton Muni/Crews Field at or above 8400 before proceeding on course. **Rwy 7**, for climb in visual conditions, cross Raton Muni/Crews Field at or above 8400 before proceeding on course. **Rwy 20**, climb on CIM VORTAC R-040 Southwest bound to airway MEA, if not at MEA by CIM VORTAC, turn south on V263-611 until reaching MEA, then on course to assigned altitude.

Rwy 25, climbing left turn heading 227° and CIM VORTAC R-040 Southwest bound to airway MEA, if not at MEA by CIM VORTAC, turn South on V263-611 until reaching MEA, then on course to assigned altitude.

RIFLE, CO

GARFIELD COUNTY RGNL (RIL)

AMDT 9 10322 (FAA)

TAKE-OFF MINIMUMS: **Rwy 8**, std. w/a min. climb of 390' per NM to 11800 or 5300-3 for climb in visual conditions.

DEPARTURE PROCEDURE: **Rwy 8**, DME required. Climb on RGA VOR/DME R-081 to ZOBAK/8 DME, then climbing left turn direct RGAVOR/DME. Climb in RGA VOR/DME holding pattern (Hold E, right turn, 263° inbound) to cross RGA VOR/DME at or above MEA/MCA before proceeding enroute, or for climb in visual conditions cross Garfield County RGNL Airport at or above 10800 before proceeding on course. **Rwy 26**, use SQUAT (RNAV) DEPARTURE.

NOTE: **Rwy 8**, terrain beginning 129' from DER, 398' right of centerline, up to 5551' MSL. Pole 4024' from DER, 1396' right of centerline, 42' AGL/5642' MSL. Transmission line towers beginning 1.7 NM from DER, 1723' right of centerline, up to 89' AGL/5969' MSL. Obstruction light on NDB tower 15' from DER, 283' left of centerline, up to 5586' MSL.

ROSWELL, NM

ROSWELL INTL AIR CENTER (ROW)

ORIG-A 11069 (FAA)

TAKE-OFF MINIMUMS: **Rwys 12, 30**, NA. Runway closed.

DEPARTURE PROCEDURE: **Rwy 35**, climbing left turn to 6000 via heading 277° to intercept CME R-323, upon reaching 6000 proceed on course.

RUIDOSO, NM

SIERRA BLANCA RGNL

TAKE-OFF MINIMUMS: **Rwys 6, 24**, 5200-3 or std. with a min. climb of 420' per NM to 12,100'.

DEPARTURE PROCEDURE: **Rwy 6**, climb at 385' per NM to 9100' direct CEP NDB, continue climb in holding pattern ("hold E, left turns, 273° inbound) to cross CEP NDB at or above the MEA for direction of flight. *Do not exceed 230 kts in holding pattern. **Rwy 24**, immediate climbing left turn to 9100' direct CEP NDB, continue climb in holding pattern ("hold E, left turns, 273° inbound) to cross CEP NDB at or above the MEA for direction of flight. *Do not exceed 230 kts in holding pattern.

SALIDA, CO

HARRIET ALEXANDER FIELD (ANK)

ORIG 08101 (FAA)

TAKE-OFF MINIMUMS: **Rwys 6, 24**, 6800-3 for climb in visual conditions.

DEPARTURE PROCEDURE: **Rwys 6, 24**, For climb in visual conditions: Cross Harriet Alexander Field at or above 14200 MSL before proceeding on course.

NOTE: **Rwy 24**, Multiple transmission towers beginning 666' from departure end of runway, 440' right of centerline, up to 73' AGL/7651' MSL. Multiple trees beginning 5455' from departure end of runway, 663' right of centerline, up to 100' AGL/7908' MSL.

31 MAY 2012 to 28 JUN 2012

31 MAY 2012 to 28 JUN 2012

12152

TAKE-OFF MINIMUMS AND (OBSTACLE) DEPARTURE PROCEDURES

SW-1

TAKE-OFF MINIMUMS AND (OBSTACLE) DEPARTURE PROCEDURES

12152

SANTA FE, NM

SANTA FE MUNI

TAKE-OFF MINIMUMS: **Rwy 28**, 1000-3 or std. with a min. climb of 240' per NM until passing 7300 MSL. **Rwys 2, 33**, Cats. C and D, 2900-3 or std. with a min. climb of 330' per NM until 9000 MSL.

DEPARTURE PROCEDURE: **Rwys 2, 10, 33**, turn right; **Rwys 20, 28**, turn left; **Rwy 15**, climb runway heading. **All aircraft** climb direct to SAF VORTAC. Continue climbing in SAF VORTAC holding pattern (hold SE, right turns, 332° inbound) to cross SAF VORTAC at or above airway MEA/MCA for direction of flight.

SANTA TERESA, NM

DONA ANA COUNTY AT SANTA TERESA

TAKE-OFF MINIMUMS: **Rwy 10**, std. with a min. climb of 419' per NM to 8400, or 2800-3 for climb in visual conditions. **Rwy 28**, std. with a min. climb of 358' per NM to 8400, or 2800-3 for climb in visual conditions.

DEPARTURE PROCEDURE: **Rwys 10, 28**, for climb in visual conditions: cross Dona Ana County at Santa Teresa Airport at or above 6800 before proceeding on course.

SILVER CITY, NM

GRANT COUNTY

TAKE-OFF MINIMUMS: **Rwys 3, 8, 12, 17, 21, 26, 30, 35**, std. with a min. climb of 354' per NM to 9200, or 3800-3 for climb in visual conditions.

DEPARTURE PROCEDURE: **Rwys 3, 8, 12, 17, 21, 26, 30, 35**, for climb in visual conditions: cross Grant County Airport at or above 9200.

NOTE: **Rwy 3**, crane 5007' from departure end of runway, 1056' right of centerline, 200' AGL/5610' MSL. **Rwy 8**, pole 1.12 NM from departure end of runway, 381' right of centerline, 30' AGL/5383' MSL. Power line 2.18 NM from departure end of runway, 139' right of centerline, 200' AGL/5520' MSL. **Rwy 12**, pole 5265' from departure end of runway, 490' right of centerline, 72' AGL/5417' MSL. **Rwy 17**, pole 1.02 NM from departure end of runway, 469' left of centerline, 50' AGL/5408' MSL. **Rwy 21**, multiple bushes beginning from 4556' from departure end of runway, 79' right of centerline, up to 40' AGL/5403' MSL.

SOCORRO, NM

SOCORRO MUNI (ONM)

AMDT 3 09239 (FAA)

TAKE-OFF MINIMUMS: **Rwys 6, 15, 24**, NA-terrain.

Rwy 33, 200-1½ or std. w/ min. climb of 216' per NM to 5100, or alternatively, with standard take-off minimums and a normal 200'/NM climb gradient, take-off must occur no later than 1500' prior to DER.

DEPARTURE PROCEDURE: **Rwy 33**, climbing right turn via heading 030° and ONM VORTAC R-179 to ONM VORTAC, continue climb-in-hold (hold North, right turns, 182° inbound) to cross ONM VORTAC at or above MEA/MCA for direction of flight.

NOTE: **Rwy 33**, trees beginning 67' from DER, 66' left of centerline, up to 15' AGL/4814' MSL. Trees beginning 436' from DER, 438' right of centerline, up to 15' AGL/4814' MSL. Tower 4996' from DER, 1161' left of centerline, 147' AGL/4947' MSL. Tower 5851' from DER, 584' right of centerline, 200' AGL/4956' MSL.

SPRINGFIELD, CO

SPRINGFIELD MUNI (8V7)

ORIG 07354 (FAA)

TAKE-OFF MINIMUMS: **Rwy 17**, 4900-3 or std. w/ a min. climb of 225' per NM to 5000.

NOTE: **Rwy 17**, tower 15212' from departure end of runway, 2936' right of centerline, 425' AGL/4817' MSL.

STEAMBOAT SPRINGS, CO

STEAMBOAT SPRINGS/BOB ADAMS FIELD

TAKE-OFF MINIMUMS: **Rwys 14**, 1500-3 or std. with a min. climb of 610' per NM to 9000. **Rwy 32**, 1900-3 or std. with a min. climb of 500' per NM to 9000.

DEPARTURE PROCEDURE: **Rwy 14**, turn right heading 220° intercept BQZ R-172. **Rwy 32**, turn left direct BQZ VOR/DME. **All aircraft** climb to 12100 via BQZ R-172 to SBURG Int and hold (S, right turns, 352° inbound).

STERLING, CO

STERLING MUNI

DEPARTURE PROCEDURE: **Rwys 3, 30, 33**, turn left. **Rwys 12, 15, 21**, turn right climb to 6000 direct toward SNY or AKO VOR/DME before proceeding on course.

TAOS, NM

TAOS RGNL

TAKE-OFF MINIMUMS: **Rwy 4**, 300-1.

DEPARTURE PROCEDURE: **Rwy 4**, climbing left turn. **Rwy 22**, climbing right turn. Intercept TAS R-100. Climbing direct to the TAS VORTAC, continue climb in holding pattern to cross TAS VORTAC at or above the MEA for direction of flight.

TELLURIDE, CO

TELLURIDE RGNL (TEX)

AMDT 2 11181 (FAA)

TAKE-OFF MINIMUMS: **Rwy 9**, NA-obstacles. **Rwy 27**, std. w/ min. climb of 463' per NM to 10500, or 5400-3 for climb in visual conditions.

DEPARTURE PROCEDURE: **Rwy 27**, climb to 12000 via heading 273° to intercept the ETL R-096 to ETL VOR/DME, or for climb in visual conditions: cross Telluride Airport westbound at or above 14300 via ETL R-095 to ETL VOR/DME. Note: All aircraft cross ETL VOR/DME at or above airway MEA/MCA for direction of flight.

NOTE: **Rwy 27**, trees beginning 32' from DER 421' left of centerline, up to 100' AGL/9381' MSL. Trees beginning 173' from DER, 46' right of centerline, up to 100' AGL/9094' MSL. Light support structure 8' from DER, 60' left and right of centerline, up to 4' AGL/9039' MSL. Terrain beginning at DER, left and right of centerline, up to 9075' MSL.

31 MAY 2012 to 28 JUN 2012

31 MAY 2012 to 28 JUN 2012

12152

TAKE-OFF MINIMUMS AND (OBSTACLE) DEPARTURE PROCEDURES

SW-1

TRINIDAD, CO**PERRY STOKES**

TAKE-OFF MINIMUMS: **Rwys 9,27**, NA
 DEPARTURE PROCEDURE: **Rwy 3**, turn left. **Rwy 21**, turn right, direct TAD NDB. Climb in holding to 7600 (N, left turns, 165° inbound). Aircraft departing TAD NDB bearing 330° CW 140° from TAD NDB: climb on course. Aircraft departing TAD NDB bearing 141° CW 329° from TAD NDB: depart at or above 12,500'.
 NOTE: **Rwy 3**, tree 180' from departure end of runway, on centerline, 30' AGL/5765' MSL.

TRUTH OR CONSEQUENCES, NM**TRUTH OR CONSEQUENCES MUNI**

TAKE-OFF MINIMUMS: 1500-3 or std. with a min. climb of 500' per NM to 8000.
 DEPARTURE PROCEDURE: **Rwys 19,25,29,31**, turn right; **Rwys 1,7,11,13,15,33**, turn left, climb direct TCS VORTAC, continue climb in holding pattern (N, left turns, 180° inbound) to cross TCS VORTAC at above the MEA for direction of flight.

TUCUMCARI, NM**TUCUMCARI MUNI**

DEPARTURE PROCEDURE: All Rwys for SW-bound V-264 climb TCC R-255 within 10 NM to 5500 before departing on course. **Rwy 21**, climb heading 213° to 5500 before proceeding on course. **Rwy 26**, climb heading 258° to 5500 before proceeding on course.

WALDEN, CO**WALDEN-JACKSON COUNTY (33V)****ORIG 08157**

TAKE-OFF MINIMUMS: **Rwys 17, 35**, NA-ATC.
 DEPARTURE PROCEDURE: **Rwys 4, 22**, Use WALRURNAV DEPARTURE.

WRAY, CO**WRAY MUNI**

TAKE-OFF MINIMUMS: **Rwy 17**, 500-2 or std. with a min. climb of 280' per NM to 4400.
 DEPARTURE PROCEDURE: **Rwy 17**, climbing right turn via AKO VOR/DME R-084 to 7000 before proceeding on course. **Rwy 35**, climbing left turn via AKO VOR/DME R-077 to 7000 before proceeding on course.
 NOTE: **Rwy 35**, trees 2175' left of departure end of runway, 100' AGL/3778' MSL.

ZUNI PUEBLO, NM**BLACK ROCK**

TAKE-OFF MINIMUMS: **Rwy 7**, 1200-2 or std. with a min. climb of 360 feet per NM to 7600.
 DEPARTURE PROCEDURE: **Rwy 7**, climbing left turn direct ZUN VORTAC. **Rwy 25**, climb direct ZUN VORTAC.