

APP CRS 164°	Rwy Idg TDZE Apt Elev	N/A N/A 1379
------------------------	-----------------------------	---

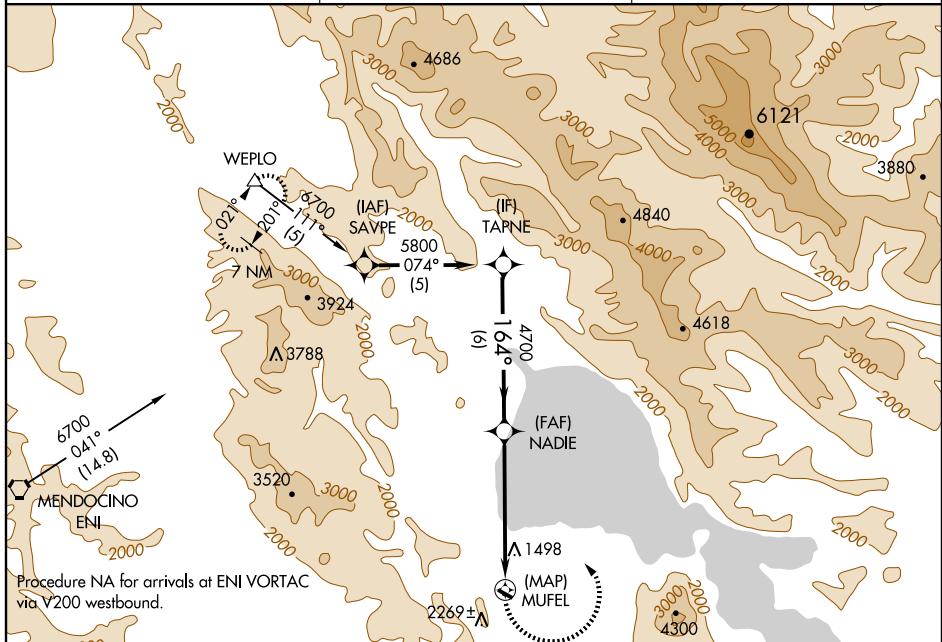
RNAV (GPS)-A

LAKEPORT/LAMPSON FIELD (102)

▼ Circling NA south of Rwy 10 and 28. DME/DME RNP-0.3 NA.
▲ NA When local altimeter setting not received, use Ukiah altimeter setting and increase all MDA 560 feet.

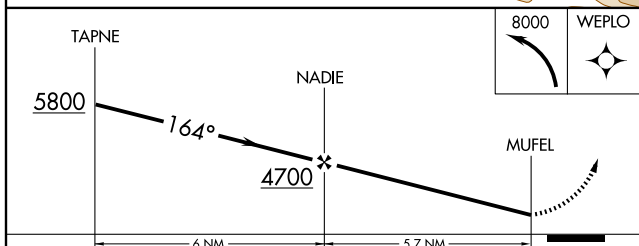
MISSED APPROACH: Climbing left turn to 8000 direct WEPLO and hold, continue climb-in-hold to 8000.

AWOS-2 118.35	OAKLAND CENTER 127.8 353.5	UNICOM 122.8 (CTAF) ①
--------------------------------	---	--



SW-2, 31 MAY 2012 to 28 JUN 2012

SW-2, 31 MAY 2012 to 28 JUN 2012



CATEGORY	A	B	C	D
CIRCLING	2580-1¼ 1201 (1300-1¼)	2580-1½ 1201 (1300-1½)	NA	

MIRL Rwy 10-28 ①

RNAV (GPS)-A