

RNAV (GPS) RWY 7

BLAIRSTOWN (1N7)

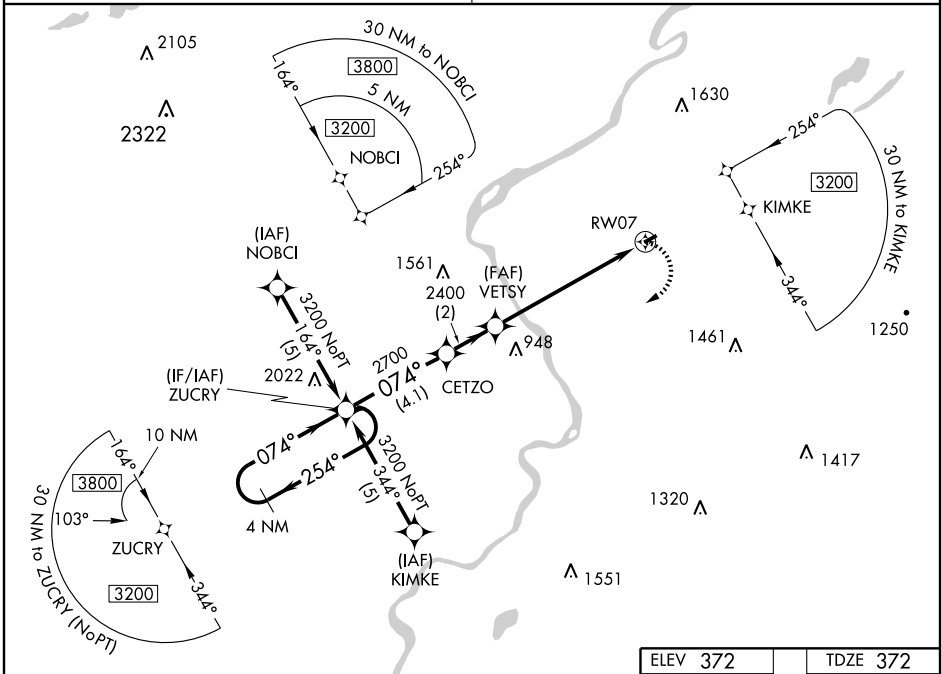
APP CRS 074°	Rwy Idg TDZE Apt Elev	2795 372 372
------------------------	-----------------------------	---

▼ When local altimeter setting not received, use Lehigh Valley altimeter setting. Circling to Rwy 25 NA at night.
▲ NA DME/DME RNP-0,3 NA.

MISSED APPROACH: Climbing right turn to 3200 direct ZUCRY and hold.

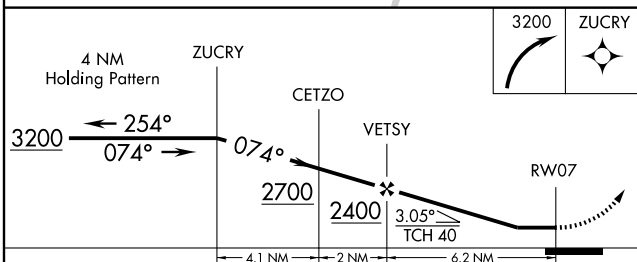
NEW YORK APP CON
127.6 379.9

UNICOM
123.0 (CTAF) 0



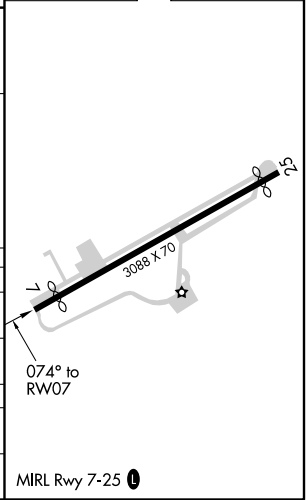
NE-2, 31 MAY 2012 to 28 JUN 2012

NE-2, 31 MAY 2012 to 28 JUN 2012



ELEV 372	TDZE 372
----------	----------

CATEGORY	A	B	C	D
LNAV MDA	1140-1 768 (800-1)	1140-1¼ 768 (800-1¼)		NA
CIRCLING	1220-1 848 (900-1)	1280-1¼ 908 (1000-1¼)		NA
LEHIGH VALLEY ALTIMETER SETTING MINIMUMS				
LNAV MDA	1420-1¼ 1048 (1100-1¼)	1420-1½ 1048 (1100-1½)		NA
CIRCLING	1500-1¼ 1128 (1200-1¼)	1560-1½ 1188 (1200-1½)		NA



BLAIRSTOWN, NEW JERSEY

AL-6784 (FAA)

VOR/DME STW	APP CRS	Rwy Idg TDZE	2852
109.6	267°	Apt Elev	371
Chan 33			372

VOR RWY 25

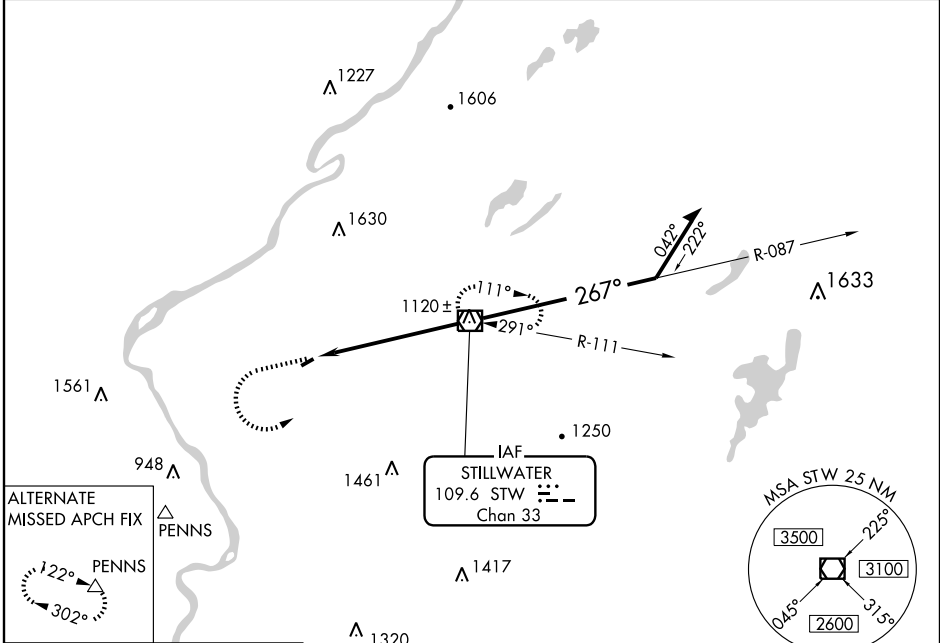
BLAIRSTOWN (1N7)

When local altimeter setting not received, use Lehigh Valley altimeter setting.
 NA Circling to Rwy 7 NA at night.

MISSED APPROACH: Climbing left turn to 3000 direct STW VOR/DME and hold.

NEW YORK APP CON **127.6 379.9**

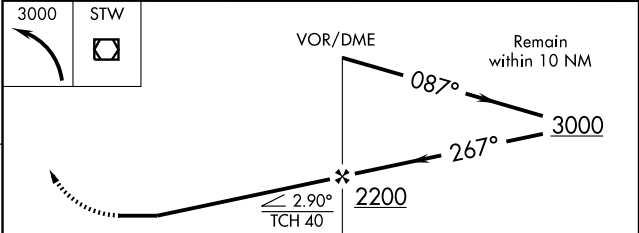
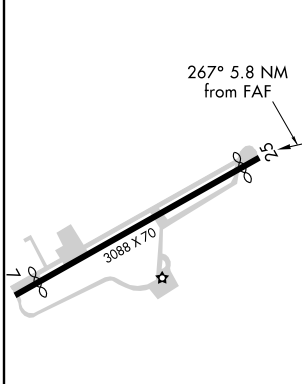
UNICOM **123.0 (CTAF) 0**



NE-2, 31 MAY 2012 to 28 JUN 2012

NE-2, 31 MAY 2012 to 28 JUN 2012

ELEV 372	TDZE 371
----------	----------



CATEGORY	A	B	C	D
S-25	1320-1¼	949 (1000-1¼)		NA
CIRCLING	1320-1¼	948 (1000-1¼)		NA
LEHIGH VALLEY ALTIMETER SETTING MINIMUMS				
S-25	1600-1¼ 1229 (1300-1¼)	1600-1½ 1229 (1300-1½)		NA
CIRCLING	1600-1¼ 1228 (1300-1¼)	1600-1½ 1228 (1300-1½)		NA

MIRL Rwy 7-25

FAF to MAP 5.8 NM

Knots	60	90	120	150	180
Min:Sec	5:48	3:52	2:54	2:19	1:56

BLAIRSTOWN, NEW JERSEY
Amdt 2 12040

40°58'N - 75°00'W

BLAIRSTOWN (1N7)

VOR RWY 25