

NDB CZB	APP CRS	Rwy Idg	4001
359	228°	TDZE	654
		Apt Elev	654

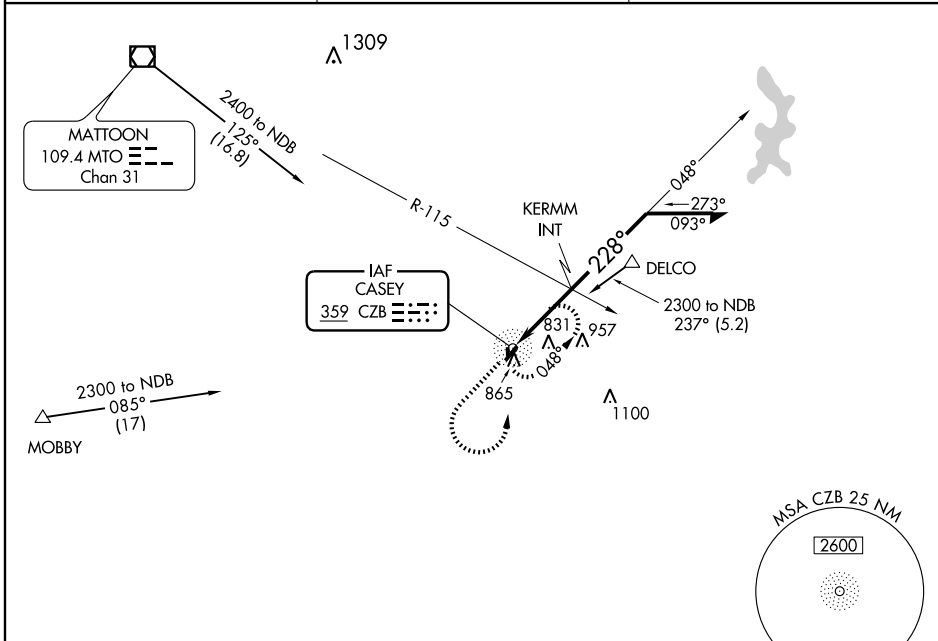
NDB RWY 22

CASEY MUNI (1H8)

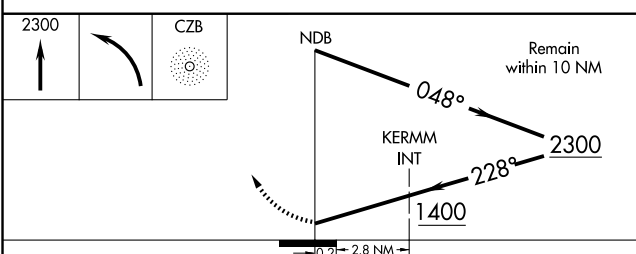
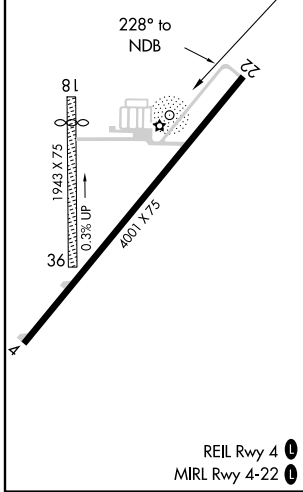
NA Visibility reduction by helicopters NA. Use Terre Haute Intl-Hulman Field altimeter setting; when not received, use Robinson altimeter setting.

MISSED APPROACH: Climb to 2300 then left turn direct CZB NDB and hold.

TERRE HAUTE ASOS 127.5 284.4	HULMAN APP CON * 125.45 288.15	UNICOM 122.8 (CTAF) 0
--	--	---------------------------------



ELEV 654	TDZE 654
----------	----------



CATEGORY	A	B	C	D
S-22	1400-1 746 (800-1)	1400-1¼ 746 (800-1¼)	1400-2¼ 746 (800-2¼)	1400-2½ 746 (800-2½)
CIRCLING	1400-1 746 (800-1)	1400-1¼ 746 (800-1¼)	1400-2¼ 746 (800-2¼)	1400-2½ 746 (800-2½)
KERMM FIX MINIMUMS				
S-22	1280-1	626 (700-1)	1280-1¾ 626 (700-1¾)	1280-2 626 (700-2)
CIRCLING	1320-1	666 (700-1)	1320-1¾ 666 (700-1¾)	1320-2 666 (700-2)

EC-3, 31 MAY 2012 to 28 JUN 2012

EC-3, 31 MAY 2012 to 28 JUN 2012

CASEY, ILLINOIS

AL-6309 (FAA)

12040

NDB CZB	APP CRS	Rwy Idg	4001
359	038°	TDZE	653
		Apt Elev	654

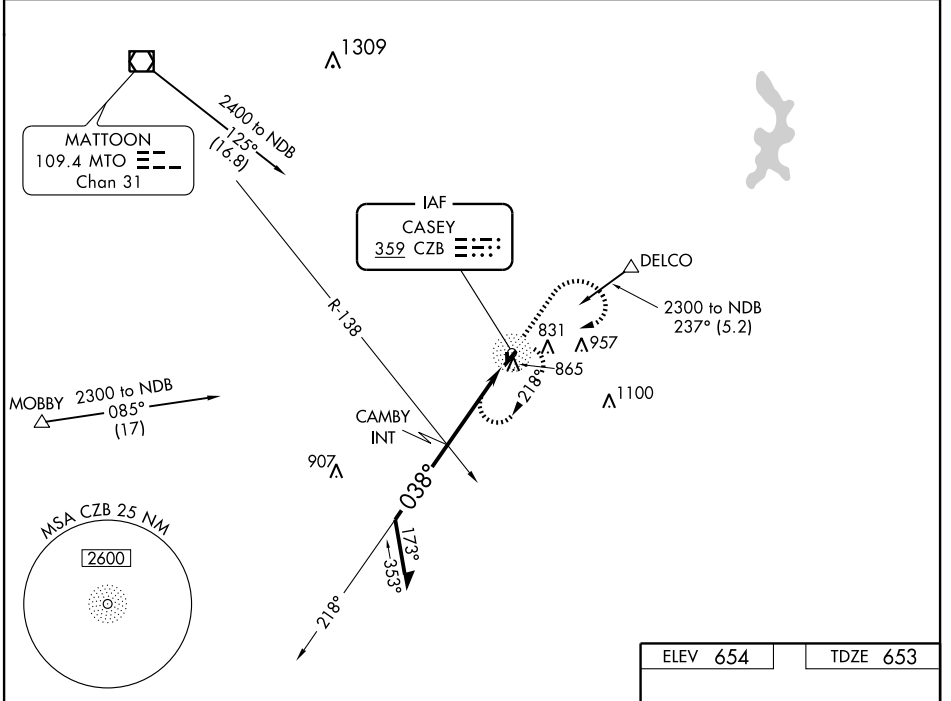
NDB RWY 4

CASEY MUNI (1H8)

▼ Visibility reduction by helicopters NA. Use Terre Haute Intl-Hulman Field altimeter setting, when not received, use Robinson altimeter setting.

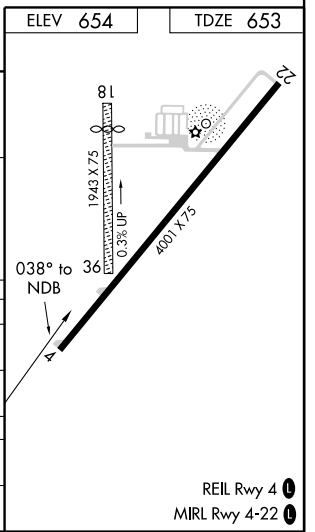
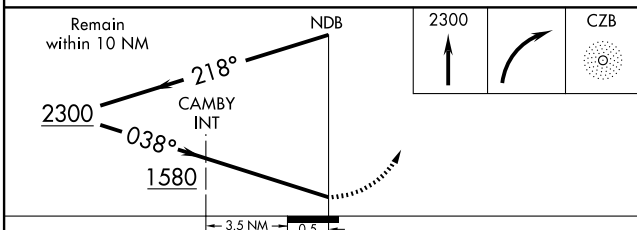
MISSED APPROACH: Climb to 2300 then right turn direct CZB NDB and hold.

TERRE HAUTE ASOS 127.5 284.4	HULMAN APP CON * 125.45 288.15	UNICOM 122.8 (CTAF) 0
---	---	--



EC-3, 31 MAY 2012 to 28 JUN 2012

EC-3, 31 MAY 2012 to 28 JUN 2012



CATEGORY	A		B		C		D	
S-4	1580-1¼	927 (1000-1¼)	1580-2¾	927 (1000-2¾)	1580-2¾	927 (1000-2¾)	1580-3	927 (1000-3)
CIRCLING	1580-1¼	926 (1000-1¼)	1580-2¾	926 (1000-2¾)	1580-2¾	926 (1000-2¾)	1580-3	926 (1000-3)
CAMBY FIX MINIMUMS								
S-4	1320-1	667 (700-1)	1320-1¾	667 (700-1¾)	1320-1¾	667 (700-1¾)	1320-2	667 (700-2)
CIRCLING	1320-1	666 (700-1)	1320-1¾	666 (700-1¾)	1320-1¾	666 (700-1¾)	1320-2	666 (700-2)

REIL Rwy 4 0
MIRL Rwy 4-22 0

CASEY, ILLINOIS
Amdt 8 29JUL10

39°18'N-88°00'W

CASEY MUNI (1H8)

NDB RWY 4

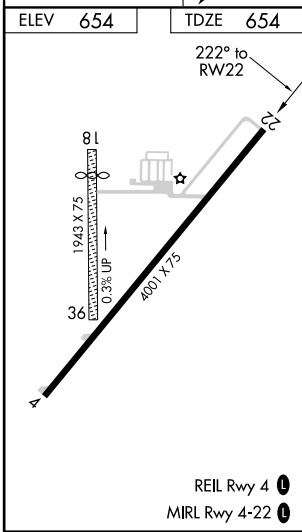
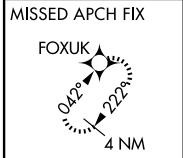
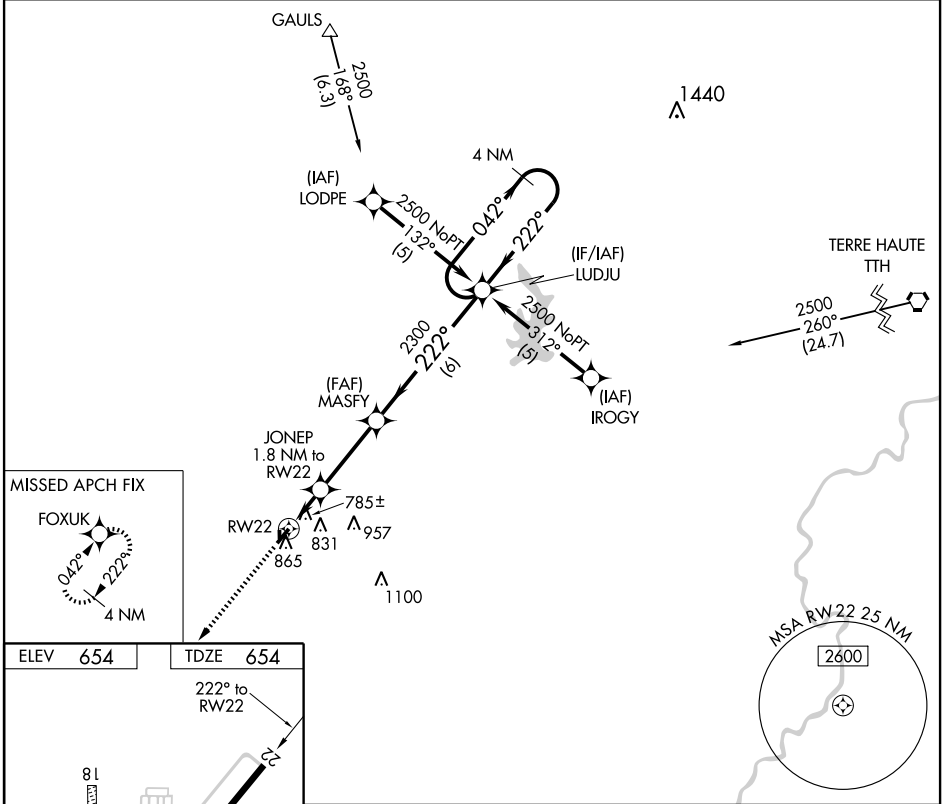
APP CRS 222°	Rwy Idg 4001
	TDZE 654
	Apt Elev 654

RNAV (GPS) RWY 22

CASEY MUNI (1H8)

<p>NA DME/DME RNP-0.3 NA. Visibility reduction by helicopters NA. Use Terre Haute Intl-Hulman Field altimeter setting; when not received, use Robinson altimeter setting.</p>	<p>MISSED APPROACH: Climb to 2300 direct FOXUK and hold.</p>
--	--

<p>TERRE HAUTE ASOS 127.5 284.4</p>	<p>HULMAN APP CON * 125.45 288.15</p>	<p>UNICOM 122.8 (CTAF) 0</p>
--	--	---



2300 FOXUK	4 NM Holding Pattern			
JONEP 1.8 NM to RWY 22	MASFY	LUDJU	2500	
1260	2300	222°	042°	222°
1.8 NM	3.2 NM	6 NM		
CATEGORY	A	B	C	D
LNAV MDA	1180-1	526 (600-1)	1180-1½ 526 (600-1½)	1180-1¾ 526 (600-1¾)
CIRCLING	1320-1	666 (700-1)	1320-1¾ 666 (700-1¾)	1320-2 666 (700-2)

EC-3, 31 MAY 2012 to 28 JUN 2012

EC-3, 31 MAY 2012 to 28 JUN 2012

APP CRS 042°	Rwy Idg TDZE Apt Elev	4001 653 654
------------------------	-----------------------------	---

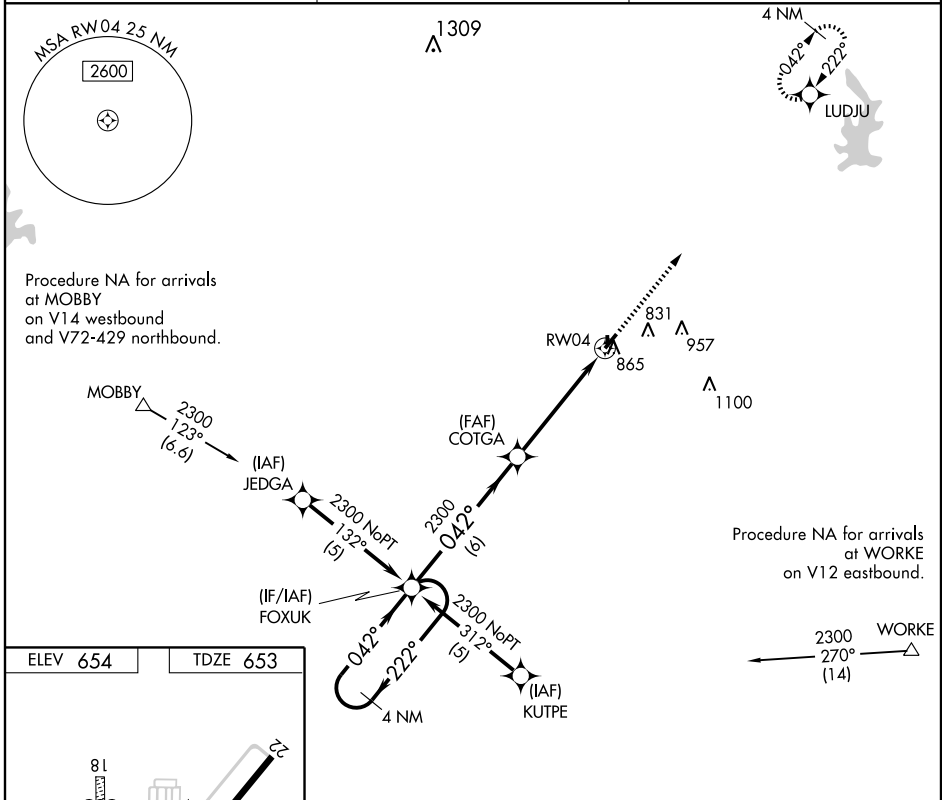
RNAV (GPS) RWY 4

CASEY MUNI (1H8)

NA DME/DME RNP-0.3 NA. Visibility reduction by helicopters NA. Use Terre Haute Intl-Hulman Field altimeter setting; when not received, use Robinson altimeter setting.

MISSED APPROACH: Climb to 2500 direct LUDJU and hold.

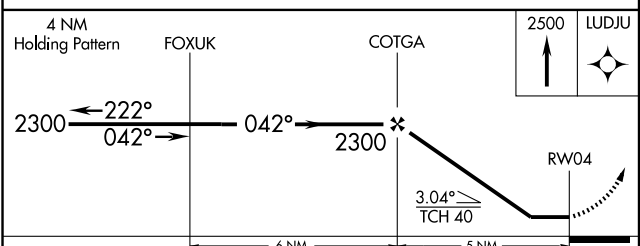
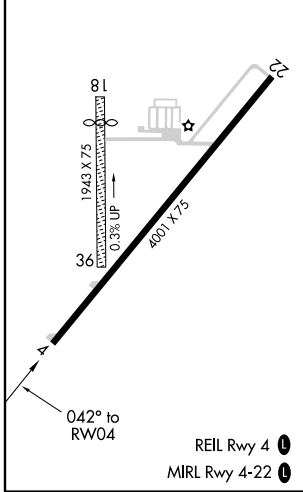
TERRE HAUTE ASOS 127.5 284.4	HULMAN APP CON ★ 125.45 288.15	UNICOM 122.8 (CTAF) 0
--	--	---------------------------------



EC-3, 31 MAY 2012 to 28 JUN 2012

EC-3, 31 MAY 2012 to 28 JUN 2012

ELEV 654	TDZE 653
----------	----------



CATEGORY	A	B	C	D
LNAV MDA	1260-1	607 (700-1)	1260-1 ³ / ₄ 607 (700-1 ³ / ₄)	1260-2 607 (700-2)
CIRCLING	1320-1	666 (700-1)	1320-1 ³ / ₄ 666 (700-1 ³ / ₄)	1320-2 666 (700-2)