

NDB CZB	APP CRS	Rwy Idg	4001
359	228°	TDZE	654
		Apt Elev	654

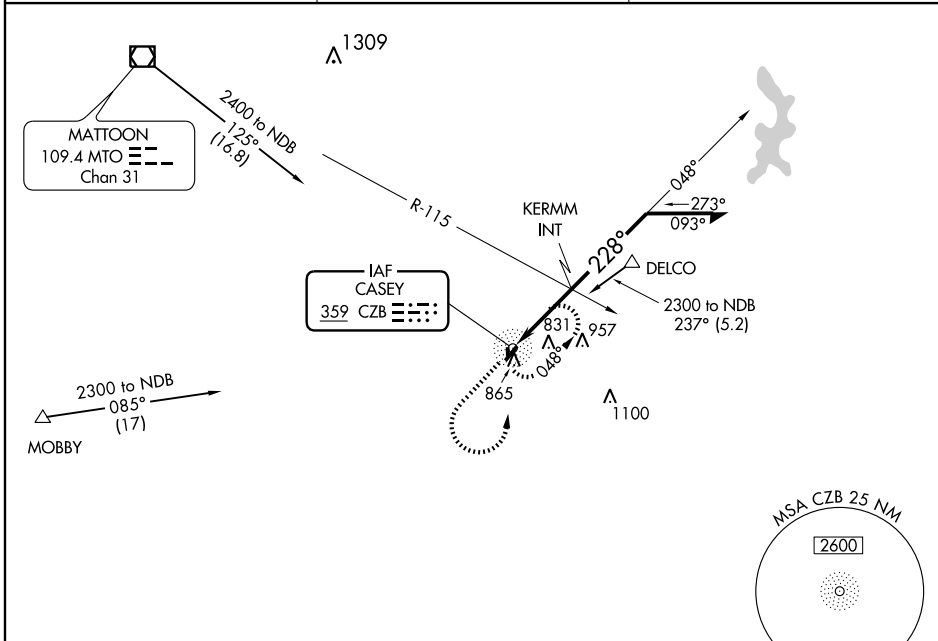
NDB RWY 22

CASEY MUNI (1H8)

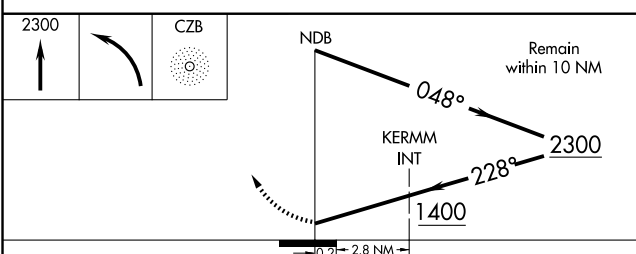
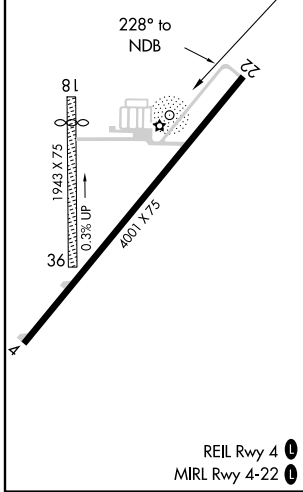
NA Visibility reduction by helicopters NA. Use Terre Haute Intl-Hulman Field altimeter setting; when not received, use Robinson altimeter setting.

MISSED APPROACH: Climb to 2300 then left turn direct CZB NDB and hold.

TERRE HAUTE ASOS 127.5 284.4	HULMAN APP CON * 125.45 288.15	UNICOM 122.8 (CTAF) 0
--	--	---------------------------------



ELEV 654	TDZE 654
----------	----------



CATEGORY	A	B	C	D
S-22	1400-1 746 (800-1)	1400-1¼ 746 (800-1¼)	1400-2¼ 746 (800-2¼)	1400-2½ 746 (800-2½)
CIRCLING	1400-1 746 (800-1)	1400-1¼ 746 (800-1¼)	1400-2¼ 746 (800-2¼)	1400-2½ 746 (800-2½)
KERMM FIX MINIMUMS				
S-22	1280-1	626 (700-1)	1280-1¾ 626 (700-1¾)	1280-2 626 (700-2)
CIRCLING	1320-1	666 (700-1)	1320-1¾ 666 (700-1¾)	1320-2 666 (700-2)

EC-3, 31 MAY 2012 to 28 JUN 2012

EC-3, 31 MAY 2012 to 28 JUN 2012

CASEY, ILLINOIS

AL-6309 (FAA)

12040

NDB CZB	APP CRS	Rwy Idg	4001
359	038°	TDZE	653
		Apt Elev	654

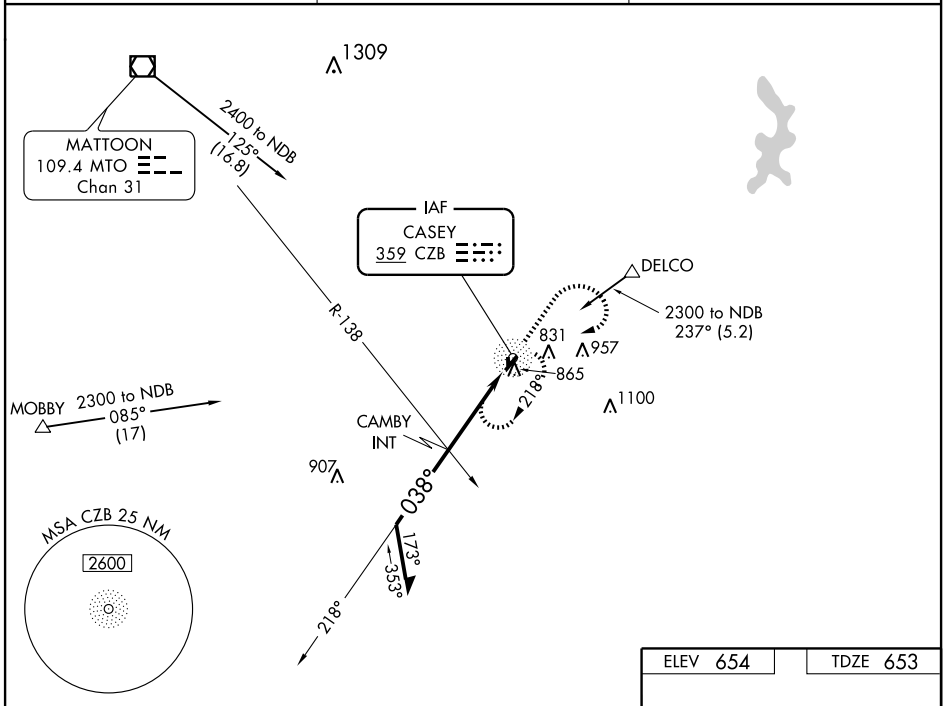
NDB RWY 4

CASEY MUNI (1H8)

▼ Visibility reduction by helicopters NA. Use Terre Haute Intl-Hulman Field altimeter setting, when not received, use Robinson altimeter setting.

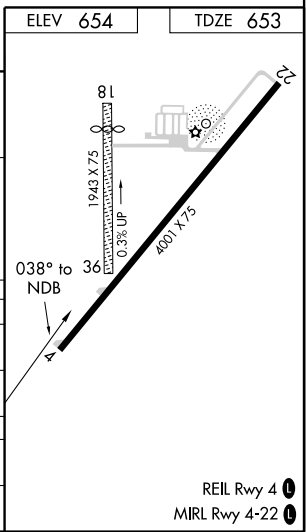
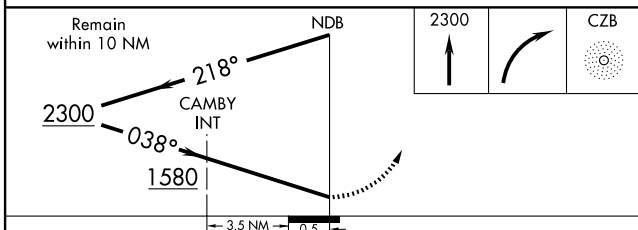
▲ NA MISSED APPROACH: Climb to 2300 then right turn direct CZB NDB and hold.

TERRE HAUTE ASOS 127.5 284.4	HULMAN APP CON ★ 125.45 288.15	UNICOM 122.8 (CTAF) 0
--	--	---------------------------------



EC-3, 31 MAY 2012 to 28 JUN 2012

EC-3, 31 MAY 2012 to 28 JUN 2012



CATEGORY	A		B		C		D	
S-4	1580-1¼	927 (1000-1¼)	1580-2¾	927 (1000-2¾)	1580-3	927 (1000-3)		
CIRCLING	1580-1¼	926 (1000-1¼)	1580-2¾	926 (1000-2¾)	1580-3	926 (1000-3)		
CAMBY FIX MINIMUMS								
S-4	1320-1	667 (700-1)	1320-1¾	667 (700-1¾)	1320-2	667 (700-2)		
CIRCLING	1320-1	666 (700-1)	1320-1¾	666 (700-1¾)	1320-2	666 (700-2)		

REIL Rwy 4 0
MIRL Rwy 4-22 0

CASEY, ILLINOIS
Amdt 8 29JUL10

39°18'N-88°00'W

CASEY MUNI (1H8)

NDB RWY 4

APP CRS 222°	Rwy Idg 4001
	TDZE 654
	Apt Elev 654

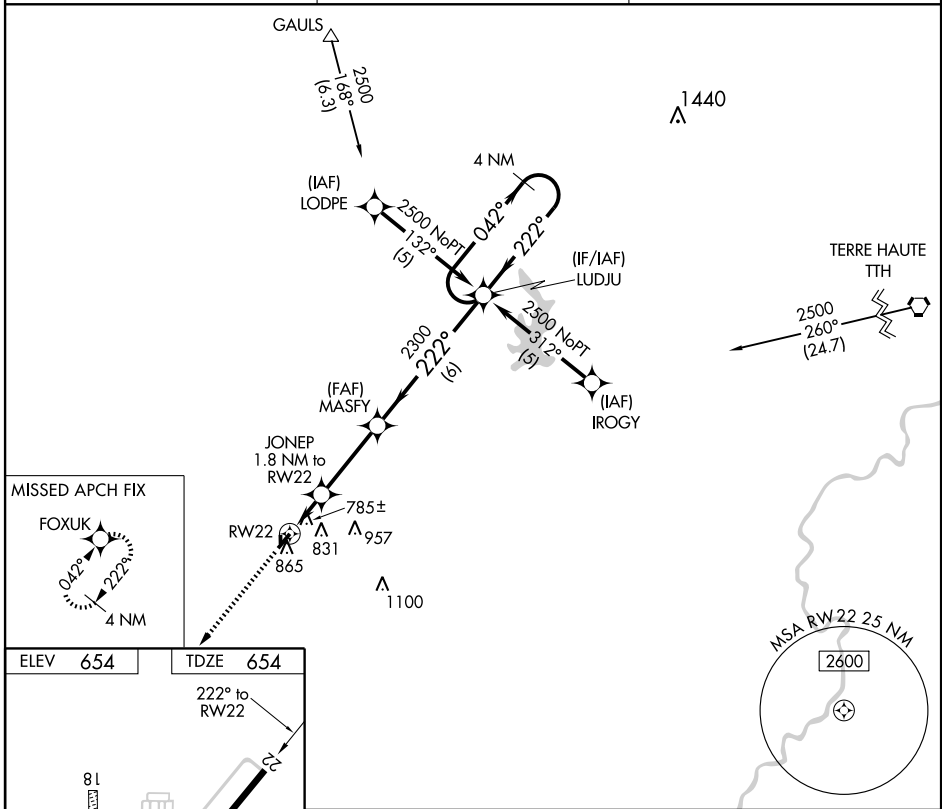
RNAV (GPS) RWY 22

CASEY MUNI (1H8)

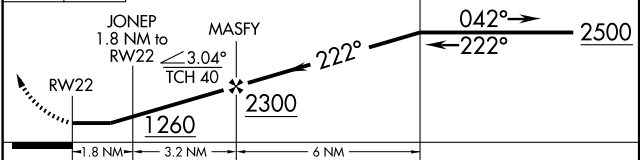
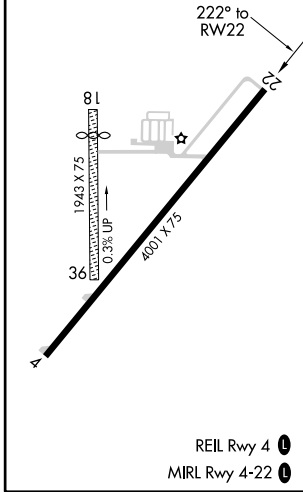
NA DME/DME RNP-0.3 NA. Visibility reduction by helicopters NA. Use Terre Haute Intl-Hulman Field altimeter setting; when not received, use Robinson altimeter setting.

MISSED APPROACH: Climb to 2300 direct FOXUK and hold.

TERRE HAUTE ASOS 127.5 284.4	HULMAN APP CON * 125.45 288.15	UNICOM 122.8 (CTAF) 0
--	--	---------------------------------



ELEV 654	TDZE 654
----------	----------



CATEGORY	A	B	C	D
LNAV MDA	1180-1	526 (600-1)	1180-1½ 526 (600-1½)	1180-1¾ 526 (600-1¾)
CIRCLING	1320-1	666 (700-1)	1320-1¾ 666 (700-1¾)	1320-2 666 (700-2)

EC-3, 31 MAY 2012 to 28 JUN 2012

EC-3, 31 MAY 2012 to 28 JUN 2012

APP CRS 042°	Rwy Idg TDZE Apt Elev	4001 653 654
------------------------	-----------------------------	---

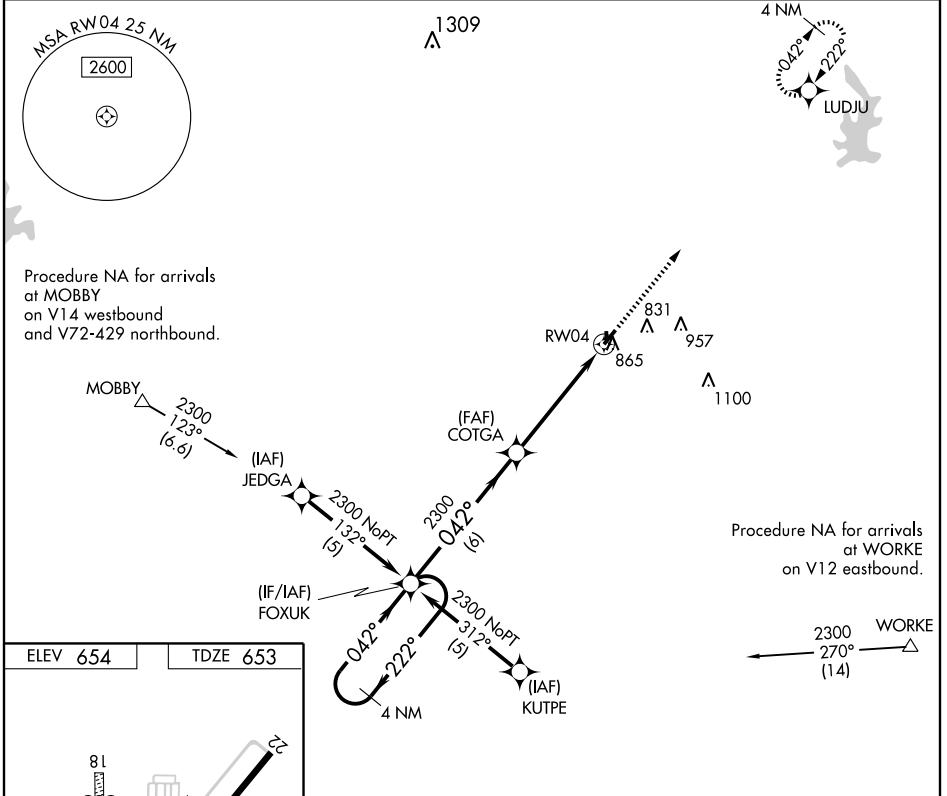
RNAV (GPS) RWY 4

CASEY MUNI (1H8)

NA DME/DME RNP-0.3 NA. Visibility reduction by helicopters NA. Use Terre Haute Intl-Hulman Field altimeter setting; when not received, use Robinson altimeter setting.

MISSED APPROACH: Climb to 2500 direct LUDJU and hold.

TERRE HAUTE ASOS 127.5 284.4	HULMAN APP CON ★ 125.45 288.15	UNICOM 122.8 (CTAF) 0
--	--	---------------------------------



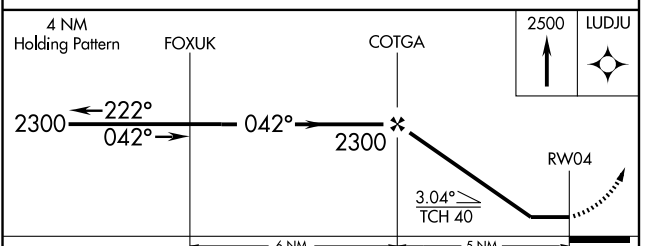
EC-3, 31 MAY 2012 to 28 JUN 2012

EC-3, 31 MAY 2012 to 28 JUN 2012

ELEV 654	TDZE 653
----------	----------

REIL Rwy 4 **0**

MIRL Rwy 4-22 **0**



CATEGORY	A	B	C	D
LNAV MDA	1260-1	607 (700-1)	1260-1 ³ / ₄ 607 (700-1 ³ / ₄)	1260-2 607 (700-2)
CIRCLING	1320-1	666 (700-1)	1320-1 ³ / ₄ 666 (700-1 ³ / ₄)	1320-2 666 (700-2)

TAKE-OFF MINIMUMS AND (OBSTACLE) DEPARTURE PROCEDURES

12152

INSTRUMENT APPROACH PROCEDURE CHARTS

IFR TAKE-OFF MINIMUMS AND (OBSTACLE) DEPARTURE PROCEDURES

Civil Airports and Selected Military Airports

ALL USERS: Airports that have Departure Procedures (DPs) designed specifically to assist pilots in avoiding obstacles during the climb to the minimum enroute altitude, and/or airports that have civil IFR take-off minimums other than standard, are listed below. Take-off Minimums and Departure Procedures apply to all runways unless otherwise specified. Altitudes, unless otherwise indicated, are minimum altitudes in MSL.

DPs specifically designed for obstacle avoidance are referred to as Obstacle Departure Procedures (ODPs) and are described below in text, or published separately as a graphic procedure. If the (Obstacle) DP is published as a graphic procedure, its name will be listed below, and it can be found in either this volume (civil), or the applicable military volume, as appropriate. Users will recognize graphic obstacle DPs by the term "(OBSTACLE)" included in the procedure title; e.g., TETON TWO (OBSTACLE). If not specifically assigned a departure procedure (i.e., ODP, SID, or radar vector) as part of an IFR clearance, an ODP may be required to be flown for obstacle clearance, even though not specifically stated in the IFR clearance. When doing so in this manner, ATC should be informed when the ODP being used contains a specified route to be flown, restrictions before turning, and/or altitude restrictions.

Graphic DPs designed by ATC to standardize traffic flows, ensure aircraft separation and enhance capacity are referred to as "Standard Instrument Departures (SIDs)". SIDs also provide obstacle clearance and are published under the appropriate airport section. ATC clearance must be received prior to flying a SID.

CIVIL USERS NOTE: Title 14 Code of Federal Regulations Part 91 prescribes standard take-off rules and establishes take-off minimums for certain operators as follows: (1) Aircraft having two engines or less - one statute mile. (2) Aircraft having more than two engines - one-half statute mile. These standard minima apply in the absence of any different minima listed below.

MILITARY USERS NOTE: Civil (nonstandard) take-off minima are published below. For military take-off minima, refer to appropriate service directives.

NAME TAKE-OFF MINIMUMS

ALTON/ST. LOUIS, IL

ST. LOUIS RGNL (AL)
AMDT 2 11125 (FAA)

NOTE: **Rwy 11**, tree and pole beginning 1066' from DER, 668' left of centerline, up to 76' AGL/575' MSL. Tree 2822' from DER, 933' right of centerline, 100' AGL/629' MSL. **Rwy 17**, trees beginning 1063' from DER, 282' left of centerline, up to 67' AGL/606' MSL. Trees beginning 1321' from DER, 115' right of centerline, up to 100' AGL/621' MSL. **Rwy 29**, trees and floodlight on hangar beginning 665' from DER, 472' left of centerline, up to 100' AGL/649' MSL. Trees beginning 1570' from DER, 204' right of centerline, up to 75' AGL/604' MSL. **Rwy 35**, trees beginning 1286' from DER, 477' left of centerline, up to 67' AGL/596' MSL.

AMERY, WI

AMERY MUNI (AHH)
AMDT 1 05076 (FAA)

TAKE-OFF MINIMUMS: **Rwy 18**, 400-1 or std. with a min. climb of 335' per NM to 1600
NOTE: **Rwy 18**, towers 6684' from departure end of runway, 2072' left of centerline, 140' AGL/1340' MSL.

NAME TAKE-OFF MINIMUMS

ANTIGO, WI

LANGLADE COUNTY (AIG)
ORIG 08101 (FAA)

TAKE-OFF MINIMUMS: **Rwy 8**, 400-2 or std. w/min. climb of 221' per NM to 1900, or alternatively, with std. takeoff min. and a normal 200'/NM climb gradient, takeoff must occur no later than 1800' prior to departure end of runway.

NOTE: **Rwy 8**, Trees beginning 3692' from departure end of runway, 538' right of centerline, up to 100' AGL/1799' MSL. Vehicle and road 796' from departure end of runway, 27' right of centerline, 15' AGL/1544' MSL. **Rwy 16**, Vehicle and road beginning 150' from departure end of runway, 212' left of centerline, 15' AGL/1539' MSL. **Rwy 26**, Trees beginning 2447' from departure end of runway, on centerline, up to 100' AGL/1614' MSL.

APPLETON, WI

OUTAGAMIE COUNTY RGNL (ATW)
ORIG 10154 (FAA)

NOTE: **Rwy 3**, antenna on building, 266' from DER, 259' right of centerline, 12' AGL/891' MSL. Trees beginning 545' from DER, 467' right of centerline, up to 42' AGL/911' MSL. **Rwy 12**, tree, 85' from DER, 310' left of centerline, 13' AGL/861' MSL. **Rwy 30**, trees beginning 568' from DER, 575' right of centerline, up to 21' AGL/950' MSL.

31 MAY 2012 to 28 JUN 2012

31 MAY 2012 to 28 JUN 2012

12152

TAKE-OFF MINIMUMS AND (OBSTACLE) DEPARTURE PROCEDURES

TAKE-OFF MINIMUMS AND (OBSTACLE) DEPARTURE PROCEDURES

12152

ASHLAND, WI

JOHN F. KENNEDY MEMORIAL (ASX)

AMDT 1 08157 (FAA)

NOTE: **Rwy 2**, trees beginning 52' from departure end of runway, 209' right of centerline, up to 100' AGL/939' MSL. Trees beginning 119' from departure end of runway, 110' left of centerline, up to 100' AGL/929' MSL. Antenna 2411' from departure end of runway, 920' left of centerline, 117' AGL/926' MSL. **Rwy 13**, trees beginning 44' from departure end of runway, 161' right of centerline, up to 100' AGL/878' MSL. Trees beginning 831' from departure end of runway, 241' left of centerline, up to 100' AGL/868' MSL. **Rwy 20**, truck on road 329' from departure end of runway, 576' right of centerline, 15' AGL/844' MSL. Trees beginning 206' from departure end of runway, 229' right of centerline, up to 100' AGL/893' MSL. Trees beginning 1152' from departure end of runway, 295' left of centerline, up to 100' AGL/893' MSL. **Rwy 31**, truck on road 65' from departure end of runway, 325' right and 331' left of centerline, 15' AGL/844' MSL. Trees beginning 90' from departure end of runway, 172' right of centerline, up to 100' AGL/919' MSL. Trees beginning 34' from departure end of runway, 222' left of centerline, up to 100' AGL/838' MSL.

BARABOO, WI

BARABOO WISCONSIN DELLS (DLL)

ORIG 85017 (FAA)

TAKE-OFF MINIMUMS: **Rwy 1**, 300-1.

DEPARTURE PROCEDURE: **Rwy 14**, southeastbound departures, climbing left turn to heading 070° intercept DLL R-090, climb to 3200 before proceeding southeastbound. **Rwys 19, 32**, southeastbound departures (090° CW 180°) climb on runway heading to 3200 before proceeding on course.

BELLEVILLE, IL

SCOTT AFB, MID AMERICA (BLV)

ORIG 10210 (FAA)

TAKE-OFF MINIMUMS: **Rwy 32L**, 300-1½ or std. w/a min. climb of 250' per NM to 800.

NOTE: **Rwy 32L**, tree 1.24 NM from DER, 2285' left of centerline, 100' AGL/699' MSL. **Rwy 32R**, trees beginning 352' from DER, 198' left of centerline, up to 77' AGL/501' MSL. Trees beginning 1349' from DER, 439' right of centerline, up to 94' AGL/516' MSL.

BENTON, IL

BENTON MUNI (H96)

ORIG 11181 (FAA)

NOTE: **Rwy 18**, trees and signs beginning 290' from DER, 572' left of centerline, up to 117' AGL/579' MSL. Trees, poles, and building beginning 95' from DER, 406' right of centerline, up to 100' AGL/559' MSL.

Rwy 36, trees beginning 419' from DER, 507' left of centerline, up to 100' AGL/549' MSL. Trees beginning 420' from DER, 602' right of centerline, up to 100' AGL/539' MSL. Vehicle on road 726' from DER, 1' right of centerline, 15' AGL/464' MSL.

BLACK RIVER FALLS, WI

BLACK RIVER FALLS AREA (BCK)

AMDT 1 (FAA)

DEPARTURE PROCEDURE: **Rwys 8, 26**, climb runway heading to 1400 before proceeding on course.

BLOOMINGTON-NORMAL, IL

CENTRAL IL RGNL ARPT AT BLOOMINGTON-NORMAL (BMI)

ORIG 07074 (FAA)

DEPARTURE PROCEDURE: **Rwy 20**, climb heading 198° to 1400 before turning left.

NOTE: **Rwy 2**, pole 1638' from departure end of runway, 908' right of centerline, 78' AGL/922' MSL. **Rwy 11**, tree 2069' from departure end of runway, 1031' right of centerline, 60' AGL/933' MSL.

BOLINGBROOK, IL

BOLINGBROOK'S CLOW INTL (1C5)

ORIG 10098 (FAA)

NOTE: **Rwy 18**, multiple buildings and trees beginning 84' from DER, 349' left of centerline, up to 100' AGL/769' MSL. Trees 774' from DER, 163' right of centerline, up to 100' AGL/749' MSL. **Rwy 36**, building and trees beginning 288' from DER, 40' left of centerline, up to 100' AGL/775' MSL. Multiple buildings and sign beginning at DER, 73' right of centerline, up to 50' AGL/700' MSL.

31 MAY 2012 to 28 JUN 2012

31 MAY 2012 to 28 JUN 2012

12152

TAKE-OFF MINIMUMS AND (OBSTACLE) DEPARTURE PROCEDURES

12152

BOSCOBEL, WI

BOSCOBEL (OVS)

AMDT 1 07298 (FAA)

TAKE-OFF MINIMUMS: **Rwy 2**, 600-3 or std. w/ min. climb of 447' per NM to 1300. **Rwy 7**, std. w/ min. climb of 548' per NM to 1500, or 1200-2½ for climb in visual conditions. **Rwy 20**, std. w/ min. climb of 672' per NM to 1400 or 1200-2½ for climb in visual conditions. **Rwy 25**, std. w/ min. climb of 381' per NM to 1300 or 1200-2½ for climb in visual conditions.

DEPARTURE PROCEDURE: **Rwy 2**, climb heading 017° to 1300 before turning south. **Rwy 7**, climb heading 067° to 1500 before turning south, or for climb in visual conditions, cross Boscobel Airport at or above 1700 before proceeding on course. **Rwy 20**, climb heading 197° to 1500 before turning east, or for climb in visual conditions, cross Boscobel Airport at or above 1700 before proceeding on course. **Rwy 25**, climb heading 247° to 1500 before proceeding on course, or for climb in visual conditions, cross Boscobel Airport at or above 1700 before proceeding on course.

NOTE: **Rwy 2**, trees 1.3 NM from departure end of runway, 2536' left of centerline, 100' AGL/1118' MSL. Trees 1.6 NM from departure end of runway, 1276' left of centerline, 100' AGL/1127' MSL. Trees 1750' from departure end of runway, 470' left of centerline, 100' AGL/835' MSL. **Rwy 7**, trees 1.2 NM from departure end of runway, 2270' right of centerline, 100' AGL/1167' MSL. Trees 1290' from departure end of runway, 580' left of centerline, 100' AGL/726' MSL. Tree 13' from departure end of runway, 489' left of centerline, 10' AGL/690' MSL. Trees 1988' from departure end of runway, 250' left of centerline, 40' AGL/738' MSL. **Rwy 20**, tower 1.7 NM from departure end of runway, 640' right of centerline, 205' AGL/1196' MSL. Tower 3070' from departure end of runway, 865' left of centerline, 100' AGL/790' MSL. **Rwy 25**, tree 1.6 NM from departure end of runway, 2290' right of centerline, 100' AGL/1137' MSL. Tree 2.1 NM from departure end of runway, 1110' right of centerline, 100' AGL/1066' MSL. Trees 958' from departure end of runway, 478' right of centerline, 40' AGL/737' MSL. Trees 1165' from departure end of runway, 701' left of centerline, 40' AGL/731' MSL. Tree 1.6 NM from departure end of runway, 2290' right of centerline, 100' AGL/1137' MSL.

BOYCEVILLE, WI

BOYCEVILLE MUNI (3T3)

ORIG 02332 (FAA)

TAKE-OFF MINIMUMS: **Rwy 8**, 1300-2 or std. with a min. climb of 340' per NM to 2700.

NOTE: **Rwy 8**, tower 6.44 NM from departure end of runway, 3378' right of centerline, 1200' AGL/2180' MSL.

BURLINGTON, WI

BURLINGTON MUNI (BUU)

AMDT 4 86128 (FAA)

TAKE-OFF MINIMUMS: **Rwy 29**, 300-1 or std. with a min. climb of 260' per NM to 1100.

DEPARTURE PROCEDURE: **Rwy 11**, climb runway heading to 1400 before turning.

CABLE, WI

CABLE UNION (3CU)

AMDT 4 99308 (FAA)

DEPARTURE PROCEDURE: **Rwy 16**, west departures, climb runway heading to 1900 before turning westbound.

CAHOKIA/ST. LOUIS, IL

ST. LOUIS DOWNTOWN (CPS)

AMDT 8 10266 (FAA)

TAKEOFF MINIMUMS: **Rwy 5**, 200-1 ¼ or std. with a min. climb of 343' per NM to 700. **Rwy 30L**, 400-2½ or std. with a min. climb of 220' per NM to 900, alternatively, with standard takeoff minimums and a normal 200' per NM climb gradient, takeoff must occur no later than 2100' prior to DER.

DEPARTURE PROCEDURE: **Rwy 5**, climb on heading 047° to 900 before turning left. **Rwys 12L, 12R**, climb on heading 122° to 1000 before turning left. **Rwy 23**, climb on heading 227° to 2000 before turning. **Rwys 30L, 30R**, climb on heading 302° to 1600 before turning.

NOTE: **Rwy 5**, obstruction light on transmission tower 1649' from DER, 19' left of centerline, 79' AGL/482' MSL. Transmission tower 324' from DER, 79' right of centerline, 78' AGL/487' MSL. **Rwy 12L**, tree 1629' from DER, 144' left of centerline, 45' AGL/453' MSL. **Rwy 12R**, tree 3822' from DER, 20' left of centerline, 94' AGL/509' MSL. Tree 2082' from DER, 927' right of centerline, 69' AGL/486' MSL. **Rwy 23**, multiple trees beginning 815' from DER, 69' left of centerline, up to 56' AGL/470' MSL. Multiple trees beginning 740' from DER, 4' right of centerline, up to 78' AGL/492' MSL. **Rwy 30L**, multiple trees beginning 2510' from DER, 503' left of centerline, up to 107' AGL/521' MSL. Multiple trees beginning 737' from DER, 32' right of centerline, up to 99' AGL/508' MSL.

CANTON, IL

INGERSOLL (CTK)

ORIG 08213 (FAA)

NOTE: **Rwy 9**, tree 1335' from departure end of runway, 772' right of centerline, 100' AGL/749' MSL. **Rwy 36**, tree 1162' from departure end of runway, 486' right of centerline, 100' AGL/739' MSL.

31 MAY 2012 to 28 JUN 2012

31 MAY 2012 to 28 JUN 2012

12152

TAKE-OFF MINIMUMS AND (OBSTACLE) DEPARTURE PROCEDURES

12152

CARBONDALE/MURPHYSBORO, IL

SOUTHERN ILLINOIS (MDH)

ORIG 10042 (FAA)

TAKE-OFF MINIMUMS: **Rwys 18L, 18R**, std. w/ min. climb of 225' per NM to 1100, or 900-2½ for climb in visual conditions.

DEPARTURE PROCEDURE: **Rwys 18L, 18R**, for climb in visual conditions, cross Southern Illinois airport at or above 1200 MSL before proceeding on course.

NOTE: **Rwy 6**, road 179' from DER, 214' left of centerline, 418' MSL. **Rwy 18L**, tree 3235' from DER, 696' right of centerline, 100' AGL/497' MSL. Antenna 2731' from DER, 458' left of centerline, 100' AGL/483' MSL. Tower 2780' from DER, 484' left of centerline, 100' AGL/483' MSL. Pole 1166' from DER, 192' right of centerline, 100' AGL/439' MSL. **Rwy 24**, trees beginning 633' from DER left and right of centerline up to 100' AGL/485' MSL. **Rwy 36L**, trees beginning 480' from DER left and right of centerline up to 100' AGL/479' MSL.

CARMI, IL

CARMI MUNI (CUL)

AMDT 2 11293 (FAA)

NOTE: **Rwy 18**, tree 4288' from DER, 930' right of centerline, 100' AGL/499' MSL. **Rwy 36**, tree 3078' from DER, 41' left of centerline, 100' AGL/499' MSL.

CASEY, IL

CASEY MUNI (1H8)

AMDT 4 10210 (FAA)

TAKE-OFF MINIMUMS: **Rwys 18, 36, NA**-Environmental.

NOTE: **Rwy 4**, tank 4010' from DER, 1464' right of centerline, 140' AGL/785' MSL. Vehicle on road 651' from DER, 539' right of centerline, 15' AGL/671' MSL. Trees 998' from DER, 463' right of centerline, 100' AGL/756' MSL. **Rwy 22**, vehicle on road 255' from DER, 399' left of centerline, 15' AGL/671' MSL. Trees 2297' from DER, 766' right of centerline, 100' AGL/756' MSL.

CENTRALIA, IL

CENTRALIA MUNI (ENL)

AMDT 2 12152 (FAA)

NOTE: **Rwy 9**, trees beginning 208' from DER, 494' right of centerline, up to 100' AGL/624' MSL. Trees beginning 528' from DER, 653' left of centerline, up to 100' AGL/624' MSL. **Rwy 18**, trees beginning 60' from DER, 265' left of centerline, up to 100' AGL/562' MSL. Trees beginning 77' from DER, 207' right of centerline, up to 100' AGL/603' MSL. Silo 1115' from DER, 755' right of centerline, 73' AGL/608' MSL. **Rwy 27**, trees beginning 1169' from DER, 493' left of centerline, up to 100' AGL/624' MSL. Trees beginning 1793' from DER, 377' right of centerline, up to 100' AGL/619' MSL. **Rwy 36**, trees and poles beginning 37' from DER, 5' right of centerline, up to 100' AGL/604' MSL. Trees, poles, and buildings beginning 203' from DER, 363' left of centerline, up to 100' AGL/610' MSL.

CHAMPAIGN/URBANA, IL

UNIVERSITY OF ILLINOIS-WILLARD (CMI)

ORIG 09015 (FAA)

DEPARTURE PROCEDURE: **Rwy 4**, climb heading 041° to 1300 before turning left.

NOTE: **Rwy 4**, trees beginning 56' from departure end of runway, 23' left of centerline, up to 63' AGL/808' MSL. Trees beginning 56' from departure end of runway, 89' right of centerline, up to 98' AGL/843' MSL. **Rwy 14R**, rod on obstruction light 520' from departure end of runway, 383' left of centerline, 17' AGL/760' MSL. Glide slope 541' from departure end of runway, 439' left of centerline, 36' AGL/779' MSL. Rod on obstruction light 543' from departure end of runway, 439' left of centerline, 37' AGL/780' MSL. **Rwy 18**, Terrain beginning 2' from departure end of runway, from left to right of centerline, up to 0' AGL/749' MSL. **Rwy 32L**, terrain 20' from departure end of runway, 152' right of centerline, 0' AGL/752' MSL. Antenna on ASR 1920' from departure end of runway, 331' left of centerline, 82' AGL/831' MSL.

CHETEK, WI

CHETEK MUNI-SOUTHWORTH (Y23)

ORIG 11293 (FAA)

NOTE: **Rwy 17**, trees beginning 1330' from DER, 95' left of centerline, up to 100' AGL/1141' MSL. Vehicle on road 310' from DER, across centerline, 15' AGL/1068' MSL. **Rwy 35**, trees beginning 1021' from DER, 502' left of centerline, up to 100' AGL/1142' MSL. Trees beginning 32' from DER, 504' right of centerline, up to 100' AGL/1149' MSL.

31 MAY 2012 to 28 JUN 2012

31 MAY 2012 to 28 JUN 2012

12152

TAKE-OFF MINIMUMS AND (OBSTACLE) DEPARTURE PROCEDURES

12152

CHICAGO, IL

CHICAGO MIDWAY INTL (MDW)
AMDT 10 08101 (FAA)

DEPARTURE PROCEDURE: **Rwys 4L, 4R**, Climbing right turn to 2400 heading 100° before proceeding on course. **Rwys 13C, 13L, 13R**, Climb heading 135° to 1400 before turning. **Rwys 22L, 22R**, Climb heading 224° to 1300 before turning. **Rwys 31C, 31L, 31R**, Climb heading 315° to 1500 before turning.

NOTE: **Rwy 4L**, fence 18' from departure end of runway, 257' left of centerline, 12' AGL/616' MSL. Vehicle plus road 143' from departure end of runway, 163' left of centerline, 16' AGL/620' MSL. Building 251' from departure end of runway, 217' left of centerline, 26' AGL/630' MSL. Sign 1912' from departure end of runway, 330' left of centerline, 88' AGL/692' MSL. Multiple light poles and trees beginning 375' from departure end of runway, 98' right of centerline, up to 75' AGL/679' MSL.

Rwy 4R, LOC 300' from departure end of runway, on centerline, 10' AGL/614' MSL. Light pole and multiple trees beginning 40' from departure end of runway, 369' left of centerline, up to 75' AGL/679' MSL. Blast fence 277' from departure end of runway, 45' left of centerline, 9' AGL/613' MSL. Tower 3983' from departure end of runway, 1142' left of centerline, 109' AGL/708' MSL. Multiple light poles and trees beginning 96' from departure end of runway, 21' right of centerline, up to 53' AGL/657' MSL. Train beginning 1483' from departure end of runway, 570' right of centerline, 48' AGL/654' MSL. **Rwy 13C**, LOC 248' from departure end of runway, on centerline, 8' AGL/619' MSL. Building 101' from departure end of runway, 254' left of centerline, 14' AGL/625' MSL. Trees beginning 288' from departure end of runway, 459' left of centerline, up to 76' AGL/680' MSL. Trees beginning 109' from departure end of runway, 402' right of centerline, up to 86' AGL/700' MSL. **Rwy 13L**, multiple poles and trees beginning 362' from departure end of runway, 215' left of centerline, up to 71' AGL/675' MSL. Trees beginning 1136' from departure end of runway, 54' right of centerline, up to 76' AGL/680' MSL. **Rwy 13R**, wind sock 263' from departure end of runway, 256' left of centerline, 9' AGL/621' MSL. Tree 1852' from departure end of runway, 960' left of centerline, 75' AGL/661' MSL. Building 459' from departure end of runway, 594' right of centerline, 50' AGL/660' MSL. Hangar 661' from departure end of runway, 291' right of centerline, 52' AGL/661' MSL. **Rwy 22L**, multiple poles and trees beginning 74' from departure end of runway, 375' left of centerline, up to 70' AGL/689' MSL. Multiple poles and trees beginning 465' from departure end of runway, 49' right of centerline, up to 60' AGL/679' MSL. Tank 4100' from departure end of runway, 161' right of centerline, 109' AGL/728' MSL. **Rwy 22R**, multiple poles and trees beginning 575' from departure end of runway, 168' left of centerline, up to 58' AGL/677' MSL. Tank 4100' from departure end of runway, 161' left of centerline, 109' AGL/728' MSL. Fence 198' from departure end of runway, 3' right of centerline, 12' AGL/630' MSL. Trees beginning 183' from departure end of runway, 65' right of centerline, up to 72' AGL/686' MSL.

CHICAGO, IL (CON'T)

CHICAGO MIDWAY INTL (CON'T)

Rwy 31C, LOC 239' from departure end of runway, on centerline, 10' AGL/617' MSL. Trees beginning 452' from departure end of runway, 454' left of centerline, up to 63' AGL/667' MSL. Spire 2207' from departure end of runway, 699' left of centerline, 78' AGL/684' MSL. Multiple poles and trees beginning 142' from departure end of runway, 28' right of centerline, up to 73' AGL/672' MSL. DME 183' from departure end of runway, 309' right of centerline, 17' AGL/624' MSL. Sign 1528' from departure end of runway, 270' right of centerline, 52' AGL/652' MSL. Tank 5576' from departure end of runway, 1430' right of centerline, 162' AGL/756' MSL. **Rwy 31L**, trees beginning 1299' from departure end of runway, 85' left of centerline, up to 53' AGL/662' MSL. Trees beginning 1779' from departure end of runway, 26' right of centerline, up to 68' AGL/667' MSL. **Rwy 31R**, multiple poles and trees beginning 379' from departure end of runway, 49' left of centerline, up to 65' AGL/664' MSL. Pole and trees beginning 70' from departure end of runway, 50' right of centerline, up to 68' AGL/667' MSL.

CHICAGO-O'HARE INTL (ORD)

AMDT 17 10210 (FAA)

TAKEOFF MINIMUMS: **Rwy 27L**, std. w/ min. climb of 220' per NM to 1700. **Rwy 27R**, std. w/ min. climb of 228' per NM to 1800. **Rwy 28**, std. w/ min. climb of 222' per NM to 1700. **Rwy 32L**, std. w/ min. climb of 240' per NM to 1800.

NOTE: **Rwy 4L**, buildings beginning 3302' from DER, 1198' right of centerline, up to 109' AGL/751' MSL. **Rwy 4R**, tree 810' from DER, 611' right of centerline, 36' AGL/675' MSL. Trees beginning 2149' from DER, 834' left of centerline, up to 100' AGL/749' MSL. Parked aircraft on ramp 153' from DER, 329' left of centerline, 80' AGL/735' MSL. **Rwy 9L**, building 2771' from DER, 1234' right of centerline, 94' AGL/745' MSL. **Rwy 9R**, street light 877' from DER, 689' right of centerline, 40' AGL/673' MSL. Tree 3492' from DER, 1054' left of centerline, 100' AGL/744' MSL. **Rwy 10**, parked aircraft on ramp 33' from DER, 440' left of centerline, 80' AGL/735' MSL. Parked aircraft on ramp 940' from DER, 641' left of centerline, 80' AGL/735' MSL. Towers beginning 2522' from DER, 983' right of centerline, up to 127' AGL/771' MSL. **Rwy 14L**, light poles beginning 981' from DER, 745' left of centerline, up to 40' AGL/684' MSL. Parked aircraft on ramp 100' from DER, 383' right of centerline, 80' AGL/729' MSL. Sign 1292' from DER, 724' right of centerline, 37' AGL/682' MSL. **Rwy 14R**, parked aircraft on ramp 1104' from DER, 766' right of centerline, 80' AGL/736' MSL. **Rwy 27L**, parked aircraft on ramp, 70' from DER, 408' left of centerline, 80' AGL/740' MSL. Rod on tower 2591' from DER, 1181' left of centerline, 86' AGL/753' MSL. Parked aircraft on ramp 3627' from DER, 1225' right of centerline, 80' AGL/754' MSL. **Rwy 27R**, tanks beginning 1489' from DER, 886' left of centerline, 53' AGL/726' MSL. Lighted hopper and elevator 2778' from DER, 1020' left of centerline, 111' AGL/776' MSL. **Rwy 28**, trees beginning 1717' from DER, 752' left of centerline, up to 100' AGL/789' MSL. **Rwy 32L**, pole 1993' from DER, 791' left of centerline, 49' AGL/716' MSL.

31 MAY 2012 to 28 JUN 2012

31 MAY 2012 to 28 JUN 2012

12152

TAKE-OFF MINIMUMS AND (OBSTACLE) DEPARTURE PROCEDURES

TAKE-OFF MINIMUMS AND (OBSTACLE) DEPARTURE PROCEDURES

12152

CHICAGO, IL (CON'T)

LANSING MUNI (IGQ)

AMDT 5 09183 (FAA)

TAKE-OFF MINIMUMS: **Rwy 36**, 300-1¼ or std. w/min. climb of 322' per NM to 900.

DEPARTURE PROCEDURE: **Rwy 36**, climb heading 002° to 1200 before proceeding on course.

NOTE: **Rwy 9**, poles beginning 1203' from DER, from left to right of centerline, up to 32' AGL/647' MSL. Building 1882' from DER, 964' left of centerline, 50' AGL/668' MSL. Tower 4314' from DER, 664' left of centerline, 149' AGL/764' MSL. **Rwy 18**, trees beginning 381' from DER, 440' right of centerline, up to 42' AGL/661' MSL. **Rwy 27**, hangar and building beginning 254' from DER, 69' right of centerline, up to 26' AGL/641' MSL. Trees, antennas, antennas on buildings, signs, light poles, and road with vehicles beginning 326' from DER, from left to right of centerline, up to 68' AGL/683' MSL. Tank 575' from DER, 65' left of centerline, 16' AGL/630' MSL. **Rwy 36**, pole 5546' from DER, 1932' right of centerline, 164' AGL/777' MSL.

CHICAGO/AURORA, IL

AURORA MUNI (ARR)

AMDT 1 07298 (FAA)

NOTE: **Rwy 9**, vehicle on road 794' from departure end of runway, right and left of centerline, 15' AGL/734' MSL. Multiple trees beginning 4126' from departure end of runway, on centerline, 100' AGL/819' MSL. **Rwy 15**, multiple trees, power poles and road beginning 900' from departure end of runway, 47' right of centerline, up to 100' AGL/809' MSL. Power pole 1313' from departure end of runway, 47' left of centerline, 34' AGL/733' MSL. **Rwy 18**, multiple power poles beginning 1218' from departure end of runway, 190' right of centerline, up to 35' AGL/734' MSL. Multiple trees beginning 3646' from departure end of runway, on centerline up to 100' AGL/809' MSL. **Rwy 27**, vehicle on road 1020' from departure end of runway, right and left of centerline, 15' AGL/734' MSL. **Rwy 33**, multiple trees and road beginning 788' from departure end of runway, 238' right of centerline, up to 79' AGL/788' MSL. Road and power pole beginning 577' from departure end of runway, 137' left of centerline, up to 38' AGL/747' MSL. **Rwy 36**, tree, pole and fence beginning 31' from departure end of runway, 169' left of centerline, up to 35' AGL/734' MSL. Vehicle on road beginning 1099' from departure end of runway, right and left of centerline, 15' AGL/734' MSL.

CHICAGO/LAKE IN THE HILLS, IL

LAKE IN THE HILLS (3CK)

ORIG-A 12096 (FAA)

NOTE: **Rwy 8**, road beginning 118' from DER, left/right and on centerline, 15' AGL/901' MSL. Multiple trees beginning 2174' from DER, 294' left of centerline, up to 100' AGL/986' MSL. Multiple trees beginning 3312' from DER, 1023' right of centerline, up to 100' AGL/994' MSL. **Rwy 26**, multiple trees beginning 55' from DER, 288' right of centerline, up to 100' AGL/999' MSL. Multiple trees beginning 299' from DER, 101' left of centerline, up to 100' AGL/959' MSL. Power lines beginning 1714' from DER, 12' right of centerline, up to 36' AGL/937' MSL. Power lines beginning 1879' from DER, 87' left of centerline, up to 52' AGL/952' MSL.

CHICAGO/PROSPECT HEIGHTS/ WHEELING, IL

CHICAGO EXECUTIVE (PWK)

AMDT 3 11125 (FAA)

TAKE-OFF MINIMUMS: **Rwy 12**, 300-1¼ or std. w/min. climb of 230' per NM to 900. Or alternatively, with standard takeoff minimums and a normal 200' per NM climb gradient, takeoff must occur no later than 1700' prior to DER. **Rwy 30**, 300-1 or std. w/min. climb of 250' per NM to 900, or alternatively, with standard takeoff minimums and a normal 200' per NM climb gradient, takeoff must occur no later than 2000' prior to DER.

NOTE: **Rwy 6**, trees beginning 10' from DER, left and right of centerline, up to 100' AGL/764' MSL. Vehicles on road beginning 102' from DER, left and right of centerline, up to 17' AGL/661' MSL. **Rwy 12**, vehicles on roads beginning 6' from DER, left and right of centerline, up to 17' AGL/661' MSL. Trees beginning 34' from DER, left and right of centerline, up to 100' AGL/764' MSL. Multiple antennas, buildings and poles beginning 164' from DER, right and left of centerline, up to 174' AGL/834' MSL. **Rwy 16**, multiple antennas, buildings, and poles beginning 91' from DER, left and right of centerline, up to 30' AGL/675' MSL. Vehicles on road beginning 288' from DER, left and right of centerline, up to 17' AGL/658' MSL. Trees beginning 442' from DER, left and right of centerline, up to 68' AGL/712' MSL. **Rwy 24**, vehicles on roads beginning 1' from DER, left and right of centerline, up to 17' AGL/666' MSL. Multiple buildings, poles and tower beginning 63' from DER, left and right of centerline, up to 130' AGL/783' MSL. Trees beginning 842' from DER, left and right of centerline, up to 48' AGL/693' MSL. **Rwy 30**, vehicles on road beginning 4' from DER, left and right of centerline, up to 17' AGL/666' MSL. Fence 63' from DER, 24' right of centerline, 12' AGL/652' MSL. Multiple buildings, poles and transmission towers beginning 70' from DER, left and right of centerline, up to 128' AGL/778' MSL. Trees beginning 77' from DER, left and right of centerline, up to 100' AGL/759' MSL. Antenna 5087' from DER, 759' right of centerline, 152' AGL/802' MSL. **Rwy 34**, trees beginning 116' from DER, left and right of centerline, up to 85' AGL/725' MSL. Building 718' from DER, 541' right of centerline, 53' AGL/693' MSL.

31 MAY 2012 to 28 JUN 2012

31 MAY 2012 to 28 JUN 2012

12152

TAKE-OFF MINIMUMS AND (OBSTACLE) DEPARTURE PROCEDURES

12152

CHICAGO/ROCKFORD, IL

CHICAGO/ROCKFORD INTL (RFD)

ORIG 11041 (FAA)

TAKE-OFF MINIMUMS: **Rwy 7**, 300-1½ or std. w/ min. climb of 210' per NM to 1000, or alternatively, with standard takeoff minimums and a normal 200' per NM climb gradient. Takeoff must occur no later than 1300' prior to DER. **Rwy 25**, 300-1 or std w/ min. climb of 270' per NM to 1000.

NOTE: **Rwy 1**, vehicles on roadway 569' from DER, 640' left of centerline, up to 15' AGL/754' MSL. Tree 1572' from DER, 658' left of centerline, 100' AGL/778' MSL. **Rwy 7**, vehicles on roadway 485' from DER, 600' right of centerline, up to 15' AGL/754' MSL. Rod on building 628' from DER, 275' right of centerline 13' AGL/752' MSL. Poles beginning 544' from DER, 596' right of centerline, up to 32' AGL/771' MSL. Trees beginning 1084' from DER, 244' right of centerline, up to 100' AGL/804' MSL. Trees beginning 1603' from DER, 254' left of centerline, up to 100' AGL/779' MSL. Trees beginning 4745' from DER, 593' right of centerline, up to 100' AGL/859' MSL. Trees beginning 5167' from DER, 630' left of centerline, up to 100' AGL/879' MSL. Obstruction light on antenna 5379' from DER, 1768' left of centerline, 129' AGL/888' MSL. Tower 5359' from DER, 1785' left of centerline, 140' AGL/888' MSL. **Rwy 19**, vehicles on roadway 447' from DER, 593' left of centerline, up to 15' AGL/724' MSL. Trees beginning 2202' from DER, 996' right of centerline, up to 100' AGL/796' MSL. **Rwy 25**, vehicles on roadway 2' from DER, left and right of centerline, up to 15' AGL/744' MSL. Trees beginning 4660' from DER, 1237' left of centerline, up to 100' AGL/909' MSL.

CHICAGO/ROMEOVILLE, IL

LEWIS UNIVERSITY (LOT)

AMDT 1 10154 (FAA)

TAKE-OFF MINIMUMS: **Rwy 2**, 300-1½ or std. w/ min. climb of 420' per NM to 1200.

DEPARTURE PROCEDURE: **Rwy 2**, climb heading 016° to 1300 before turning right.

NOTE: **Rwy 2**, multiple towers, tree, and stack beginning 1196' from DER, 49' left of centerline, up to 213' AGL/876' MSL. **Rwy 9**, multiple trees and building beginning 243' from DER, 358' left of centerline, up to 64' AGL/735' MSL. Multiple light poles, trees, and sign beginning 112' from DER, 174' right of centerline, up to 77' AGL/721' MSL. **Rwy 27**, multiple trees beginning 1143' from DER, 634' right of centerline, up to 70' AGL/723' MSL.

CHICAGO/WAUKEGAN, IL

WAUKEGAN RGNL (UGN)

ORIG 91122 (FAA)

TAKE-OFF MINIMUMS: **Rwy 14**, 300-1.

CHICAGO/WEST CHICAGO, IL

DUPAGE (DPA)

ORIG 07354 (FAA)

NOTE: **Rwy 2L**, tree 2249' from departure end of runway, 1065' left of centerline, 15' AGL/831' MSL.

Rwy 2R, tower 4561' from departure end of runway, 1540' right of centerline, 140' AGL/899' MSL. **Rwy 10**, building 631' from departure end of runway, 611' left of centerline, 15' AGL/777' MSL, tree 872' from departure end of runway, 336' left of centerline, 15' AGL/815' MSL, tree 1437' from departure end of runway, 367' left of centerline, 15' AGL/827' MSL, stack 1639' from departure end of runway, 184' left of centerline, 50' AGL/810' MSL. **Rwy 15**, road 267' from departure end of runway, 130' left of centerline, 15' AGL/815' MSL, road 467' from departure end of runway, 8' left of centerline, 15' AGL/815' MSL. Signal pole 804' from departure end of runway, 235' right of centerline, 15' AGL/800' MSL, trees beginning 1075' from departure end of runway, 133' right of centerline, 15' AGL/832' MSL.

Rwy 33, multiple trees starting 332' from departure end of runway, 356' left and right of centerline, 15' AGL/836' MSL, obstruction light on pole 887' from departure end of runway, 149' left of centerline, 10' AGL/796' MSL, obstruction light on pole 927' from departure end of runway, 120' right of centerline, 10' AGL/793' MSL.

CLINTONVILLE, WI

CLINTONVILLE MUNI (CLI)

AMDT 1 07074 (FAA)

TAKE-OFF MINIMUMS: **Rwys 9, 27**, NA-environmental.

NOTE: **Rwy 4**, trees beginning 382' from departure end of runway, 485' right of centerline, up to 100' AGL/914' MSL, elevator 1199' from departure end of runway, 300' right of centerline, up to 100' AGL/930' MSL. **Rwy 14**, trees beginning 379' from departure end of runway, 424' right of centerline, up to 100' AGL/909' MSL. **Rwy 22**, trees beginning 729' from departure end of runway, 471' right of centerline, up to 100' AGL/929' MSL. **Rwy 32**, trees beginning 1215' from departure end of runway, 426' left of centerline, up to 100' AGL/934' MSL.

DANVILLE, IL

VERMILION RGNL (DNV)

ORIG 09183 (FAA)

NOTE: **Rwy 3**, tree 2298' from departure end of runway, 725' right of centerline, 50' AGL/761' MSL. **Rwy 16**, tree 4101' from departure end of runway, 378' left of centerline, 50' AGL/789' MSL. **Rwy 21**, tree 1982' from departure end of runway, 802' left of centerline, 50' AGL/728' MSL. **Rwy 34**, tree 3460' from departure end of runway, 2' right of centerline, 50' AGL/812' MSL.

DE KALB, IL

DE KALB TAYLOR MUNI (DKB)

AMDT 4 99140 (FAA)

TAKE-OFF MINIMUMS: **Rwy 27**, 300-1.

DEPARTURE PROCEDURE: **Rwy 9**, climb runway heading to 1400 before proceeding on course.

31 MAY 2012 to 28 JUN 2012

31 MAY 2012 to 28 JUN 2012

TAKE-OFF MINIMUMS AND (OBSTACLE) DEPARTURE PROCEDURES

12152

DECATUR, IL

DECATUR (DEC)

AMDT 3 10266 (FAA)

DEPARTURE PROCEDURE: **Rwy 6**, climb heading 060° to 1700 before turning left. **Rwy 30**, climb heading 300° to 1400 before turning right. **Rwy 36**, climbing left turn to intercept AXC VORTAC R-340 to 2000 before proceeding on course.

NOTE: **Rwy 24**, pole 802' from DER, 664' left of centerline, 30' AGL/704' MSL. Trees beginning 895' from DER, 722' right of centerline, up to 88' AGL/762' MSL. **Rwy 30**, trees beginning 948' from DER, 395' left of centerline, up to 78' AGL/742' MSL. Trees beginning 1314' from DER, 57' right of centerline, up to 90' AGL/739' MSL. **Rwy 36**, trees beginning 1549' from DER, 14' left of centerline, up to 75' AGL/749' MSL. Trees beginning 460' from DER, 84' right of centerline, up to 72' AGL/751' MSL.

DIXON, IL

DIXON MUNI - CHARLES R WALGREEN FIELD (C73)

AMDT 3 11181 (FAA)

TAKE-OFF MINIMUMS: **Rwy 26**, 400-2½ or std. w/ min. climb of 250' per NM to 1300.

NOTE: **Rwy 8**, vehicle on road beginning 336' from DER, on centerline, up to 15' AGL/798' MSL. **Rwy 12**, railroad track beginning 198' from DER, 288' right of centerline, up to 23' AGL/810' MSL. Vehicle on road beginning 150' from DER, 106' left of centerline, up to 15' AGL/794' MSL. **Rwy 26**, tower 2 NM from DER, 707' left of centerline, 749' AGL/1100' MSL. Light poles beginning 166' from DER, 361' right of centerline, up to 39' AGL/806' MSL. Stack 793' from DER, 672' right of centerline, 60' AGL/843' MSL. Railroad tracks 572' from DER, 305' right of centerline, 23' AGL/803' MSL. Multiple rooftops beginning 210' from DER, 413' right of centerline, up to 36' AGL/806' MSL. Trees beginning 330' from DER, 83' left and right of centerline, up to 14' AGL/833' MSL. **Rwy 30**, multiple rooftops beginning 321' from DER, 140' left of centerline, up to 62' AGL/833' MSL. Power line beginning 412' from DER, 120' right of centerline, up to 100' AGL/870' MSL. Trees beginning 2477' from DER, 211' left and right of centerline, up to 100' AGL/896' MSL.

DWIGHT, IL

DWIGHT (DTG)

ORIG 11265 (FAA)

TAKE-OFF MINIMUMS: **Rwys 18, 36**, NA - Environmental.

NOTE: **Rwy 9**, buildings and silos beginning 8' from DER, 169' left of centerline, up to 55' AGL/684' MSL. Trees 257' from DER, 383' left of centerline, up to 100' AGL/729' MSL. Vehicle on road 185' from DER, left and right of centerline, up to 15' AGL/639' MSL.

EAGLE RIVER, WI

EAGLE RIVER MUNI (EGV)

ORIG 06271 (FAA)

NOTE: **Rwy 4**, road 240' from departure end of runway, 559' right of centerline, 15' AGL/1654' MSL. Terrain 51' from departure end of runway, 288' right of centerline, 0' AGL/1639' MSL. **Rwy 13**, road 268' from departure end of runway, 572' left of centerline, 15' AGL/1654' MSL. **Rwy 22**, road 246' from departure end of runway, 566' right of centerline, 15' AGL/1654' MSL. Multiple trees 476' from departure end of runway, 430' right of centerline, 83' AGL/1722' MSL. Multiple trees 761' from departure end of runway, 147' left of centerline, 96' AGL/1735' MSL.

EAST TROY, WI

EAST TROY MUNI (57C)

ORIG 10210 (FAA)

TAKE-OFF MINIMUMS: **Rwys 18, 36**, NA - Environmental.

NOTE: **Rwy 8**, trees beginning 106' from DER, 45' right of centerline, up to 100' AGL/979' MSL. Trees beginning 34' from DER, 6' left of centerline, up to 100' AGL/908' MSL. **Rwy 26**, vehicle on road 346' from DER, 17' right of centerline, up to 15' AGL/865' MSL. Vehicle on road 561' from DER, 588' left of centerline, up to 15' AGL/865' MSL. Vehicle on road 607' from DER, 46' right of centerline, up to 17' AGL/867' MSL. Trees beginning 1850' from DER, 131' right of centerline, up to 100' AGL/989' MSL. Trees beginning 2870' from DER, 431' left of centerline, up to 100' AGL/959' MSL.

EAU CLAIRE, WI

CHIPPEWA VALLEY RGNL (EAU)

AMDT 2 08157 (FAA)

TAKE-OFF MINIMUMS: **Rwy 14**, 500-2 ¾ or std. w/ min. climb of 295' per NM to 1500. **Rwy 32**, 200-1½ or std. w/ min. climb of 270' per NM to 1200.

DEPARTURE PROCEDURE: **Rwy 14**, climb heading 138° to 2000 before proceeding on course. **Rwy 22**, climb heading 224° to 1700 before proceeding on course. **Rwy 32**, climb heading 304° to 1700 before proceeding on course.

NOTE: **Rwy 4**, terrain 25' from departure end of runway, 98' left of centerline, 0' AGL/942' MSL. **Rwy 14**, trees beginning 336' from departure end of runway, 73' right of centerline, up to 62' AGL/1110' MSL. Trees beginning 999' from departure end of runway, 29' left of centerline up to 60' AGL/1159' MSL. Radio tower 2.2 NM from departure end of runway, 18' left of centerline, 455' AGL/1349' MSL. **Rwy 22**, vehicle on road and obstruction light on pole beginning 116' from departure end of runway, 426' right of centerline, up to 17' AGL/892' MSL. Trees 639' from departure end of runway, 509' left of centerline, 30' AGL/909' MSL. **Rwy 32**, trees beginning 184' from departure end of runway, 502' left of centerline, up to 67' AGL/1069' MSL. Trees beginning 562' from departure end of runway, 224' right of centerline, up to 74' AGL/933' MSL.

31 MAY 2012 to 28 JUN 2012

31 MAY 2012 to 28 JUN 2012

12152

TAKE-OFF MINIMUMS AND (OBSTACLE) DEPARTURE PROCEDURES

TAKE-OFF MINIMUMS AND (OBSTACLE) DEPARTURE PROCEDURES

12152

EFFINGHAM, IL

EFFINGHAM COUNTY MEMORIAL (1H2)
AMDT 5A 11321 (FAA)

TAKE-OFF MINIMUMS: **Rwy 1**, std. w/min. climb of 220' per NM to 1300 or 1000-2½ for climb in visual conditions. **Rwy 19**, 300-1¼ or std. w/min. climb of 353' per NM to 1000.

DEPARTURE PROCEDURE: **Rwy 1**, climb heading 009° to 1100 before turning left or for climb in visual conditions, cross Effingham County Memorial airport at or above 1400 before proceeding on course. **Rwy 29**, climb heading 294° to 1100 before turning right.

NOTE: **Rwy 1**, vehicles on roadway, 439' from DER, left and right of centerline, up to 15' AGL/600' MSL. Trees beginning 389' from DER, 499' right of centerline, up to 100' AGL/680' MSL. **Rwy 11**, trees beginning 2071' from DER, left and right of centerline, up to 100' AGL/670' MSL. **Rwy 19**, trees beginning 5' from DER, left and right of centerline, up to 100' AGL/670' MSL. Sidemount antenna, 5816' from DER, 1692' right of centerline, 141' AGL/773' MSL.

EPHRAIM, WI

EPHRAIM-GIBRALTAR (3D2)
ORIG 11013 (FAA)

NOTE: **Rwy 14**, trees beginning 73' from DER, 218' right of centerline, up to 100' AGL/849' MSL. Trees beginning 81' from DER, 427' right of centerline, up to 100' AGL/849' MSL. Terrain 73' from DER, 458' right of centerline, 775' MSL. Terrain beginning 81' from DER, 427' left of centerline, up to 765' MSL. **Rwy 32**, trees beginning 246' from DER, 192' right of centerline, up to 100' AGL/869' MSL. Trees beginning 444' from DER, 451' left of centerline, up to 100' AGL/859' MSL. Terrain beginning 23' from DER, 134' right of centerline, 775' MSL. Terrain beginning 101' from DER, 20' left of centerline, 775' MSL.

FAIRFIELD, IL

FAIRFIELD MUNI (FWC)
AMDT 2A 11097 (FAA)

TAKE-OFF MINIMUMS: **Rwy 9**, 400-1 or std. with a min. climb of 370' per NM to 900. **Rwy 27**, 300-1 or std. with a min. climb of 320' per NM to 600.

NOTE: **Rwy 9**, tower 7280' from DER, 931' left of centerline, 277' AGL/730' MSL.

FLORA, IL

FLORA MUNI (FOA)
AMDT 2 10322 (FAA)

DEPARTURE PROCEDURE: **Rwys 15, 33**, NA-Environmental.

NOTE: **Rwy 3**, trees beginning 198' from DER, 55' left of centerline. Up to 99' AGL/554' MSL. Pole 897' from DER, 389' left of centerline, 29' AGL/493' MSL. Vehicle on road beginning 293' from DER, 55' left of centerline, 15' AGL/479' MSL. Trees beginning 59' from DER, 312' right of centerline, up to 99' AGL/537' MSL. **Rwy 21**, vehicle on road beginning 11' from DER, 445' left of centerline, up to 15' AGL/488' MSL. Trees beginning 2730' from DER, 29' left of centerline, up to 98' AGL/572' MSL. Tree 2785' from DER, 108' right of centerline, 99' AGL/547' MSL.

FOND DU LAC, WI

FOND DU LAC COUNTY (FLD)
AMDT 1A 10098 (FAA)

DEPARTURE PROCEDURE: **Rwy 9**, climb runway heading to 2000 before turning north. **Rwy 36**, climb runway heading to 2000 before turning east.

NOTE: **Rwy 9**, control tower 190' from DER, 409' right of centerline, 29' AGL/816' MSL.

FORT ATKINSON, WI

FORT ATKINSON MUNI (61C)
ORIG 11125 (FAA)

TAKE-OFF MINIMUMS: **Rwy 3**, 300-1½ or std. w/min. climb of 220' per NM to 1100', or alternatively, with standard takeoff minimums and a normal 200' per NM climb gradient, takeoff must occur no later than 1500' prior to DER. **Rwy 21**, 300-1¼ or std. w/min. climb of 211' per NM to 1100', or alternatively, with standard takeoff minimums and a normal 200' per NM climb gradient, takeoff must occur no later than 1400' prior to DER.

NOTE: **Rwy 3**, vehicle on road 670' from DER, 57' left of centerline, up to 15' AGL/814' MSL. Trees beginning 746' from DER, 417' left of centerline, up to 100' AGL/949' MSL. Trees beginning 1.1 miles from DER, 1772' right of centerline, up to 100' AGL/979' MSL. **Rwy 21**, trees beginning 2630' from DER, 1140' right of centerline, up to 100' AGL/959' MSL.

FREEPORT, IL

ALBERTUS (FEP)
ORIG 07130 (FAA)

TAKE-OFF MINIMUMS: **Rwys 13, 18, 31, 36**, NA-Environmental.

NOTE: **Rwy 24**, multiple trees beginning 446' from departure end of runway, 450' right of centerline, up to 67' AGL/903' MSL.

FRIENDSHIP (ADAMS), WI

ADAMS CO. LEGION FIELD (63C)
AMDT 1 02164 (FAA)

TAKE-OFF MINIMUMS: **Rwys 8, 26**, NA - unsurveyed turf runways. **Rwy 33**, 500-2 or std. with a min. climb of 400' per NM to 1600.

NOTE: **Rwy 15**, powerline 1210' from departure end of runway, 130' left of centerline, 60' AGL/1090' MSL. **Rwy 33**, trees 200' from departure end of runway, 200' left of centerline, 57' AGL/1032' MSL. Trees 1.43 NM from departure end of runway, 2653' left of centerline, 100' AGL/1399' MSL. Watch tower 1.69 NM from departure end of runway, 2271' left of centerline, 150' AGL/1400' MSL.

GALESBURG, IL

GALESBURG MUNI (GBG)
ORIG 10210 (FAA)

NOTE: **Rwy 3**, trees beginning 1372' from DER, 352' right of centerline to 752' right of centerline, up to 55' AGL/819' MSL. **Rwy 10**, trees beginning 326' from DER, 154' right of centerline to 764' left of centerline, up to 63' AGL/820' MSL. Light 3969' from DER, 700' left of centerline 106' AGL/863' MSL. **Rwy 21**, trees beginning 361' from DER, 496' left of centerline, to 657' right of centerline, up to 42' AGL/796' MSL. **Rwy 28**, trees beginning 79' from DER, 138' left of centerline, to 330' right of centerline, up to 29' AGL/786' MSL. Pole 1204' from DER, 372' right of centerline 32' AGL/789' MSL.

31 MAY 2012 to 28 JUN 2012

31 MAY 2012 to 28 JUN 2012

12152

TAKE-OFF MINIMUMS AND (OBSTACLE) DEPARTURE PROCEDURES

TAKE-OFF MINIMUMS AND (OBSTACLE) DEPARTURE PROCEDURES

12152

GRANTSBURG, WI

GRANTSBURG MUNI (GTG)
ORIG 94230 (FAA)
TAKE-OFF MINIMUMS: **Rwy 23**, 300-1.

GRAYSLAKE, IL

CAMPBELL (C81)
AMDT 1 82063 (FAA)
TAKE-OFF MINIMUMS: **Rwy 24**, 300-1.
DEPARTURE PROCEDURE: **Rwy 9**, climb runway heading to 1200 before turning.

GREENBAY, WI

AUSTIN STRAUBEL INTL (GRB)
AMDT 2 07354 (FAA)
DEPARTURE PROCEDURE: **Rwy 6**, climb heading 062° to 1300 before turning right. **Rwy 18**, climb heading 182° to 1600 before turning left.
NOTE: **Rwy 18**, tree 3022' from departure end of runway, 680' left of centerline, 100' AGL/779' MSL. **Rwy 24**, trees beginning 1556' from departure end of runway, 893' left of centerline, up to 100' AGL/779' MSL. Pole 1114' from departure end of runway, 665' left of centerline, 38' AGL/722' MSL.

GREENVILLE, IL

GREENVILLE (GRE)
ORIG 10070 (FAA)
TAKE-OFF MINIMUMS: **Rwys 9, 27**, NA-Environmental.
NOTE: **Rwy 18**, vehicle on road at DER, 376' left of centerline, up to 15' AGL/554' MSL. Trees beginning 534' from DER, 491' right of centerline, up to 100' AGL/639' MSL. Trees beginning 3097' from DER, 54' left of centerline, 100' AGL/629' MSL. **Rwy 36**, vehicle on road at DER, 393' right of centerline, up to 15' AGL/554' MSL.

GREENWOOD/WONDER LAKE, IL

GALT FIELD (10C)
ORIG 11069 (FAA)
TAKE-OFF MINIMUMS: **Rwys 18, 36**, NA-Environmental.
NOTE: **Rwy 9**, terrain rising 31' from DER, left and right of centerline, up to 857' MSL. Trees beginning 260' from DER, 319' right of centerline, up to 100' AGL/939' MSL. Trees beginning 352' from DER, 255' left of centerline, up to 100' AGL/949' MSL. **Rwy 27**, terrain rising 70' from DER, left and right of centerline, up to 922' MSL. Trees beginning 703' from DER, 225' left of centerline, up to 100' AGL/989' MSL. Trees beginning 885' from DER, 115' right of centerline, up to 100' AGL/999' MSL. Power lines and poles beginning 904' from DER, right and left of centerline, up to 100' AGL/1016' MSL. Vehicle on road 1027' from DER, 16' right of centerline, 15' AGL/914' MSL.

HARRISBURG, IL

HARRISBURG-RALEIGH (HSB)
AMDT 1 10266 (FAA)
NOTE: **Rwy 6**, trees beginning 62' from DER, 257' left of centerline, up to 100' AGL/519' MSL. Trees and PVC pipe in concrete beginning 627' from DER, 230' left of centerline, up to 100' AGL/519' MSL. Tree 895' from DER, 523' right of centerline, 61' AGL/454' MSL. Tree 5590' from DER, 1383' left of centerline, 100' AGL/539' MSL. **Rwy 14**, vehicle 368' from DER, 594' right of centerline, 15' AGL/394' MSL. Trees beginning 3343' from DER, 1286' left of centerline, up to 100' AGL/509' MSL. **Rwy 24**, trees beginning 919' from DER, 487' right of centerline, up to 100' AGL/509' MSL. Trees beginning 1706' from DER, 420' right of centerline, up to 100' AGL/519' MSL. **Rwy 32**, vehicle 482' from DER, 609' left of centerline, 15' AGL/414' MSL. Trees beginning 1087' from DER, 207' left of centerline, up to 100' AGL/509' MSL. Trees beginning 1616' from DER, 45' right of centerline, up to 100' AGL/509' MSL.

HARTFORD, WI

HARTFORD MUNI (HXF)
ORIG 11349 (FAA)
TAKE-OFF MINIMUMS: **Rwys 1, 19**, NA-Environmental.
NOTE: **Rwy 11**, trees beginning abeam DER, 478' left of centerline, up to 100' AGL/1159' MSL. Trees beginning abeam DER, 233' right of centerline, up to 100' AGL/1139' MSL. Trees beginning 265' from DER, left and right of centerline, up to 100' AGL/1149' MSL. Transmission lines beginning 1316' from DER, left and right of centerline, up to 100' AGL/1169' MSL. Power lines beginning 1821' from DER, left and right of centerline, up to 30' AGL/1099' MSL. **Rwy 29**, terrain beginning 22' from DER, 249' right of centerline, 1060' MSL. Silo 2841' from DER, 536' right of centerline, 68' AGL/1127' MSL.

HAYWARD, WI

SAWYER COUNTY (HYR)
AMDT 4A 11349 (FAA)
TAKE-OFF MINIMUMS: **Rwy 16**, 300-2 or std. with a min. climb of 384' per NM to 1600. **Rwy 20**, 300-1 or std. with a min. climb of 270' per NM to 1300. **Rwy 34**, 300-1 or std. with a min. climb of 250' per NM to 1300.
DEPARTURE PROCEDURE: **Rwy 16**, climb heading 163° to 1900 before turning left.

JACKSONVILLE, IL

JACKSONVILLE MUNI (JXJ)
ORIG 11293 (FAA)
NOTE: **Rwy 13**, trees beginning 811' from DER, 430' left of centerline, up to 100' AGL/708' MSL. Power lines 705' from DER, crossing centerline, 40' AGL/655' MSL. **Rwy 22**, trees beginning 2888' from DER, 259' left of centerline, up to 100' AGL/707' MSL. **Rwy 31**, trees beginning 2044' from DER, 823' right of centerline, up to 100' AGL/688' MSL.

31 MAY 2012 to 28 JUN 2012

31 MAY 2012 to 28 JUN 2012

TAKE-OFF MINIMUMS AND (OBSTACLE) DEPARTURE PROCEDURES

12152

JANESVILLE, WI

SOUTHERN WISCONSIN RGNL (JVL)
ORIG 08101 (FAA)

TAKE-OFF MINIMUMS: **Rwy 36**, 300-2¼ or std. w/a min. climb of 203' per NM to 1200, or alternatively, with standard takeoff minimums and a normal 200'/NM climb gradient, takeoff must occur no later than 1200' prior to departure end of runway.

NOTE: **Rwy 4**, Road 342' from departure end of runway, 520' right of centerline, 17' AGL/846' MSL. Trees beginning 624' from departure end of runway, 366' left of centerline, up to 60' AGL/889' MSL. Light on pole 1290' from departure end of runway, 595' left of centerline, 21' AGL/840' MSL. Antenna 804' from departure end of runway, 190' left of centerline, 16' AGL/825' MSL.

Rwy 32, Tree 1524' from departure end of runway 857' left of centerline, 100' AGL/869' MSL. **Rwy 36**, tree 1427' from departure end of runway, 108' left of centerline, 42' AGL/851' MSL. Road 385' from departure end of runway, 20' left of centerline, 15' AGL/824' MSL. Tower 1.92 NM from departure end of runway, 1427' left of centerline, 258' AGL/1101' MSL.

JOLIET, IL

JOLIET RGNL (JOT)
AMDT 4 10098 (FAA)

TAKE-OFF MINIMUMS: **Rwy 4**, 300-2 or std. w/a min. climb of 217' per NM to 1000 or alternatively, with standard take-off minimums and a normal 200'/NM climb gradient, take-off must occur no later than 1500' prior to DER. **Rwy 13**, 600-3 or std. w/a min. climb of 300' per NM to 1300.

DEPARTURE PROCEDURE: **Rwy 13**, climb heading 130° to 1100 before turning left.

NOTE: **Rwy 4**, vehicle on road 98' from DER, 379' left of centerline, up to 15' AGL/599' MSL. Vehicle on road 453' from DER, 602' right of centerline, up to 15' AGL/599' MSL. Trees beginning 500' from DER, 627' left of centerline, up to 100' AGL/654' MSL. Pole 878' from DER, 44' right of centerline, 22' AGL/602' MSL. Trees beginning 853' from DER, 597' right of centerline, up to 100' AGL/734' MSL. Rising terrain beginning 1.7 NM from DER, 68' left of centerline, up to 834' MSL. **Rwy 13**, vehicle on road 39' from DER, 491' right of centerline, up to 15' AGL/589' MSL. Vehicle on road 177' from DER, 512' left of centerline, up to 15' AGL/584' MSL. Tower 2 NM from DER, 2601' right of centerline, 420' AGL/973' MSL. Building 567' from DER, 270' right of centerline, 28' AGL/602' MSL. **Rwy 22**, vehicle on road beginning 8' from DER, left and right of centerline, up to 15' AGL/594' MSL. Trees beginning 195' from DER, left and right of centerline, up to 100' AGL/709' MSL. **Rwy 31**, buildings beginning 4' from DER, left and right of centerline, up to 100' AGL/606' MSL. Trees beginning 135' from DER, left and right of centerline, up to 100' AGL/675' MSL. Vehicle on road beginning 93' from DER, left and right of centerline, up to 17' AGL/594' MSL. Poles beginning 138' from DER, left and right of centerline, up to 50' AGL/628' MSL.

JUNEAU, WI

DODGE COUNTY (UNU)
ORIG 94286 (FAA)

TAKE-OFF MINIMUMS: **Rwy 20**, 300-1.

KANKAKEE, IL

GREATER KANKAKEE (IKK)
ORIG 07074 (FAA)

NOTE: **Rwy 4**, vehicle on road 532' from departure end of runway, 546' left of centerline, 15' AGL/652' MSL. **Rwy 16**, vehicle on road 729' from departure end of runway, 181' right of centerline, 15' AGL/645' MSL. **Rwy 22**, vehicle on road 1069' from departure end of runway, 622' left of centerline, 15' AGL/653' MSL. **Rwy 34**, vehicle on road 831' from departure end of runway, 189' left of centerline, 15' AGL/650' MSL. Tree 623' from departure end of runway, 203' right of centerline, 25' AGL/650' MSL. Tree 164' from departure end of runway, 541' right of centerline, 60' AGL/630' MSL. Tree 505' from departure end of runway, 122' left of centerline, 65' AGL/635' MSL.

KENOSHA, WI

KENOSHA RGNL (ENW)
ORIG 09239 (FAA)

NOTE: **Rwy 7R**, multiple light poles beginning 560' from DER, 342' right of centerline, up to 26' AGL/729' MSL. Multiple trees and pole beginning 569' from DER, 248' left of centerline, up to 54' AGL/760' MSL. **Rwy 7L**, multiple trees beginning 156' from DER, 324' left of centerline up to 52' AGL/761' MSL. **Rwy 25L**, multiple trees and hangars beginning 10' from DER, 209' right of centerline up to 11' AGL/760' MSL. Tree 22' from DER, 378' left of centerline 24' AGL/763' MSL. Fence, 200' from DER, 456' left of centerline, 8' AGL, 737' MSL. Vehicle on road 889' from DER, 187' left of centerline, 14' AGL/753' MSL. **Rwy 33**, multiple trees beginning 808' from DER, 39' right of centerline up to 81' AGL/811' MSL. Multiple trees beginning 1171' from DER, 78' left of centerline, up to 84' AGL/810' MSL. **Rwy 25R**, trees 2800' from DER, 603' left to right of centerline, 100' AGL/819' MSL.

KEWANEE, IL

KEWANEE MUNI (EZI)
ORIG-A 09351 (FAA)

NOTE: **Rwy 27**, powerlines and utility pole beginning 1424' from DER, 100' right of centerline, up to 79' AGL/925' MSL. Powerlines 2215' from DER, 432' left of centerline, 79' AGL/916' MSL. Tree 2212' from DER, 972' left of centerline, 100' AGL/933' MSL.

31 MAY 2012 to 28 JUN 2012

31 MAY 2012 to 28 JUN 2012

12152

TAKE-OFF MINIMUMS AND (OBSTACLE) DEPARTURE PROCEDURES

TAKE-OFF MINIMUMS AND (OBSTACLE) DEPARTURE PROCEDURES

12152

LA CROSSE, WI

LA CROSSE MUNI (LSE)

AMDT 6 11237 (FAA)

TAKE-OFF MINIMUMS: **Rwy 3**, std. w/ min. climb of 460' per NM to 1700, or 1400-2½ for climb in visual conditions. **Rwy 13**, std. w/ min. climb of 420' per NM to 2000, or 1400-2½ for climb in visual conditions. **Rwy 18**, std. w/ min. climb of 400' per NM to 2200, or 1400-2½ for climb in visual conditions. **Rwy 21**, std. w/ min. climb of 430' per NM to 2100, or 1400-2½ for climb in visual conditions. **Rwy 31**, std. w/ min. climb of 340' per NM to 2500, or 1400-2½ for climb in visual conditions. **Rwy 36**, std. w/ min. climb of 400' per NM to 2200, or 1400-2½ for climb in visual conditions.

DEPARTURE PROCEDURE: **Rwys 3, 13, 18, 21, 31, 36**, for climb in visual conditions cross La Crosse Muni airport at or above 1900 MSL before proceeding on course.

NOTE: **Rwy 3**, trees beginning 498' from DER, right and left of centerline, up to 100' AGL/799' MSL. Pole 4371' from DER, 205' left of centerline, 84' AGL/784' MSL. **Rwy 13**, trees beginning 423' from DER, right and left of centerline, up to 100' AGL/754' MSL. **Rwy 18**, trees beginning 1337' from DER, right and left of centerline, up to 100' AGL/739' MSL. Vehicles on road beginning 477' from DER, right and left of centerline, 15' AGL/694' MSL. **Rwy 21**, vehicles on road and buildings beginning 478' from DER, right and left of centerline, up to 30' AGL/694' MSL. Trees beginning 1436' from DER, 281' left of centerline, up to 100' AGL/735' MSL. Light poles beginning 1503' from DER, 171' right of centerline, up to 35' AGL/695' MSL. **Rwy 31**, trees beginning 967' from DER, right and left of centerline, up to 100' AGL/754' MSL. **Rwy 36**, trees beginning 2910' from DER, right and left of centerline, up to 100' AGL/744' MSL.

LA POINTE, WI

MAJOR GILBERT FIELD (4R5)

ORIG 08157 (FAA)

TAKE-OFF MINIMUMS: **Rwy 22**, 300-2 or std. w/ min. climb of 213' per NM to 1200.

DEPARTURE PROCEDURE: **Rwy 22**, Climb heading 220° to 1200 before proceeding on course.

NOTE: **Rwy 4**, trees beginning 69' from departure end of runway, 5' left of centerline, up to 100' AGL/759' MSL. Trees beginning 340' from departure end of runway, 52' right of centerline, up to 100' AGL/759' MSL. **Rwy 22**, trees beginning 1867' from departure end of runway, 187' left of centerline, up to 100' AGL/710' MSL. Trees beginning 167' from departure end of runway, 23' right of centerline, up to 100' AGL/729' MSL.

LACON, IL

MARSHALL COUNTY (C75)

AMDT 2 89236 (FAA)

TAKE-OFF MINIMUMS: **Rwys 13, 18, 36**, 300-1.

DEPARTURE PROCEDURE: **Rwy 31**, climb runway heading to 1800 before turning.

LADYSMITH, WI

RUSK COUNTY (RCX)

ORIG 01193 (FAA)

TAKE-OFF MINIMUMS: **Rwy 19**, 300-1 or std. with a min. climb of 430' per NM to 1500.

LAKE GENEVA, WI

GRAND GENEVA RESORT (C02)

ORIG 03079 (FAA)

DEPARTURE PROCEDURE: **Rwy 23**, climb runway heading to 1500 before turning westbound.

LAND O'LAKES, WI

KINGS LAND O'LAKES (LNL)

AMDT 4 05132 (FAA)

TAKE-OFF MINIMUMS: **Rwys 5, 23**, NA-obstacles.

NOTE: **Rwy 14**, road and vehicle 195' from departure end of runway, 245' left of centerline, 33' AGL/1737' MSL. **Rwy 32**, trees 50' from departure end of runway, 296' right of centerline, up to 100' AGL/1820' MSL. Trees 820' from departure end of runway, 220' right of centerline, 66' AGL/1770' MSL. Multiple trees beginning 480' from departure end of runway, 200' left of centerline, 60' AGL/1764' MSL. Tank 1144' from departure end of runway, 615' right of centerline, 125' AGL/1833' MSL.

LAWRENCEVILLE, IL

LAWRENCEVILLE-VINCENNES INTL (LWV)

ORIG 10294 (FAA)

NOTE: **Rwy 9**, trees and irrigation booms beginning 419' from DER, 78' right of centerline, up to 100' AGL/539' MSL. Trees and irrigation booms beginning 750' from DER, 53' left of centerline, up to 100' AGL/539' MSL. **Rwy 18**, trees and irrigation booms beginning 275' from DER, 299' right of centerline, up to 100' AGL/524' MSL. Irrigation booms beginning 586' from DER, 362' left of centerline, up to 22' AGL/446' MSL. **Rwy 27**, vehicles on road and irrigation booms beginning 312' from DER, 50' right of centerline, up to 23' AGL/447' MSL. Vehicles on road and irrigation booms beginning 310' from DER, 50' left of centerline, up to 24' AGL/448' MSL.

LINCOLN, IL

LOGAN COUNTY (AAA)

AMDT 1 05300 (FAA)

TAKE-OFF MINIMUMS: **Rwy 21**, 300-½ or std. with a min. climb of 341' per NM to 800.

NOTE: **Rwy 21**, spire 2193' from departure end of runway, 208' left of centerline, 96' AGL/686' MSL.

LITCHFIELD, IL

LITCHFIELD MUNI (3LF)

AMDT 3 05300 (FAA)

NOTE: **Rwy 9**, tower 1058' left of departure end of runway, 132' AGL/822' MSL.

12152

TAKE-OFF MINIMUMS AND (OBSTACLE) DEPARTURE PROCEDURES

TAKE-OFF MINIMUMS AND (OBSTACLE) DEPARTURE PROCEDURES

12152

LORE ROCK, WI

TRI COUNTY RGNL (LNR)
AMDT 4 08185 (FAA)

TAKE-OFF MINIMUMS: **Rwys 9, 27**, 600-1¼, or 1000-2¼ for climb in visual conditions. **Rwys 18, 36**, NA-Environment.

DEPARTURE PROCEDURE: **Rwys 9, 27**, for climb in visual conditions: cross Tri-County Rgnl Airport at or above 1600 before proceeding on course.

NOTE: **Rwy 9**, terrain and trees beginning 23' from departure end of runway, 238' left of centerline, up to 100' AGL/1129' MSL. Road beginning 244' from departure end of runway, 330' left of centerline, up to 17' AGL/733' MSL. Terrain and trees beginning 18' from departure end of runway, 235' right of centerline, up to 100' AGL/722' MSL. **Rwy 27**, building 764' from departure end of runway, 386' left of centerline, up to 25' AGL/744' MSL. Tree 1381' from departure end of runway, 590' left of centerline, up to 70' AGL/785' MSL. Road beginning 245' from departure end of runway, on centerline, up to 12' AGL/731' MSL. Antennas and poles beginning 920' from departure end of runway, 372' right of centerline, up to 33' AGL/752' MSL. Trees and terrain beginning 2 NM from departure end of runway, 2658' right of centerline, up to 100' AGL/1199' MSL.

MACOMB, IL

MACOMB MUNI (MQB)
AMDT 1 89236 (FAA)

DEPARTURE PROCEDURE: **Rwy 18**, climb runway heading to 1700 before turning right. **Rwy 27**, climb runway heading to 1700 before turning left.

MADISON, WI

BLACKHAWK AIRFIELD (87Y)
AMDT 1 12152 (FAA)

TAKE-OFF MINIMUMS: **Rwy 4**, 300-2 or std. w/min. climb of 214' per NM to 1300. **Rwy 27**, 400-2¼ or std. w/min. climb of 312' per NM to 1400.

DEPARTURE PROCEDURE: **Rwy 4**, climb heading 037° to 1500 before turning left.

NOTE: **Rwy 4**, trees beginning 35' from DER, left and right of centerline, up to 100' AGL/999' MSL. Vehicle on road beginning 488' from DER, left and right of centerline, up to 17' AGL/926' MSL. **Rwy 9**, trees beginning 34' from DER, 172' right of centerline, up to 100' AGL/1009' MSL. Trees beginning 1337' from DER, left and right of centerline, up to 100' AGL/999' MSL. Vehicle on road beginning 265' from DER, left and right of centerline, up to 15' AGL/944' MSL. Trees beginning 285' from DER, 288' left of centerline, up to 100' AGL/1039' MSL. Houses beginning 1071' from DER, 614' right of centerline, up to 30' AGL/939' MSL. **Rwy 22**, trees beginning 36' from DER, left and right of centerline, up to 100' AGL/1009' MSL. Vehicles on road beginning 1025' from DER, 289' right of centerline, up to 15' AGL/974' MSL. Houses beginning 1087' from DER, left and right of centerline, up to 30' AGL/1019' MSL. Terrain beginning 25' from DER, left and right of centerline, up to 985' MSL. **Rwy 27**, trees beginning 142' from DER, left and right of centerline, up to 100' AGL/1049' MSL. Poles and buildings beginning 1101' from DER, left and right of centerline, up to 40' MSL/959' MSL. Vehicle on road beginning 222' from DER, on centerline, up to 15' AGL/934' MSL. Rising terrain beginning 116' from DER, 183' right of centerline, up to 945' MSL. Tower 1.3 NM from DER, 1894' right of centerline, 175' AGL/1185' MSL. Rising terrain beginning 3441' from DER, 840' right of centerline, up to 1027' MSL.

MADISON, WI (CON'T)

DANE COUNTY RGNL-TRUAX FIELD (MSN)
AMDT 8 11125 (FAA)

TAKE-OFF MINIMUMS: **Rwy 3**, 200-1¼ or std. w/min. climb of 212' per NM to 1200.

DEPARTURE PROCEDURE: **Rwy 18**, (Southwest departures 200°CW 260°) climb via heading 1823 to 3200 before proceeding on course. **Rwy 21**, (Southwest departures 200°CW 260°) climb via heading 209 to 3200 before proceeding on course.

NOTE: **Rwy 3**, tower 7137' from DER, 2392' left of centerline, 132' AGL/1082' MSL. Trees beginning 4368' from DER, 1526' left of centerline, up to 100' AGL/1082' MSL. **Rwy 14**, trees and poles beginning 936' from DER, left and right of centerline, up to 100' AGL/986' MSL. Antenna on building 3747' from DER, 1283' left of centerline, 57' AGL/976' MSL. Vehicle on road 134' from DER, left to right of centerline, up to 17' AGL/874' MSL. **Rwy 18**, trees beginning 287' from DER, left and right of centerline, up to 100' AGL/941' MSL. **Rwy 21**, trees beginning 1557' from DER, 383' right of centerline, up to 100' AGL/972' MSL. Sign 29' from DER, 118' left of centerline, 6' AGL/862' MSL. Glide slope antenna 1144' from DER, 140' left of centerline, 39' AGL/898' MSL. **Rwy 32**, trees beginning 1810' from DER, left and right of centerline, up to 100' AGL/948' MSL. Railroad 672' from DER, left to right of centerline, 23' AGL/882' MSL. **Rwy 36**, trees and pole beginning 1325' from DER, left and right of centerline, up to 100' AGL/1012' MSL. Rapidly rising terrain 1467' from DER, 678' right of centerline, up to 947' MSL. Vehicle on road 1154' from DER, left to right of centerline, up to 17' AGL/908' MSL.

MANITOWISH WATERS, WI

MANITOWISH WATERS (D25)
ORIG 10154 (FAA)

TAKE-OFF MINIMUMS: **Rwys 4, 22**, NA-Environment.

NOTE: **Rwy 14**, trees beginning 93' from DER, 225' right of centerline, up to 100' AGL/1709' MSL. Trees beginning 279' from DER, 441' left of centerline, up to 100' AGL/1709' MSL. **Rwy 32**, trees beginning 70' from DER, 343' left of centerline, up to 100' AGL/1714' MSL. Trees beginning 151' from DER, 362' right of centerline, up to 100' AGL/1714' MSL. Road 617' from DER, 44' right of centerline, 15' AGL/1634' MSL.

MANITOWOC, WI

MANITOWOC COUNTY (MTW)
AMDT 4 09071 (FAA)

TAKE-OFF MINIMUMS: **Rwy 17**, 300-1¼ or std. with a min. climb of 254' per NM to 1000.

DEPARTURE PROCEDURE: **Rwy 7**, climb heading 072° to 1200 before proceeding on course. **Rwy 25**, climb heading 252° to 1200 before proceeding on course.

NOTE: **Rwy 7**, tree 520' from DER, 279' left of centerline, 27' AGL/666' MSL. **Rwy 17**, stack 1.24 NM from DER, 1915' left of centerline, 310' AGL/893' MSL. Trees beginning 23' from DER, 16' left of centerline, up to 94' AGL/743' MSL. Trees beginning 1802' from DER, 76' right of centerline, up to 98' AGL/747' MSL. Flagpole 1234' from DER, 512' right of centerline, 36' AGL/695' MSL. Antenna 989' from DER, 511' right of centerline, 39' AGL/688' MSL. **Rwy 25**, tree 734' from DER, 321' right of centerline, 48' AGL/697' MSL. Tree 1870' from DER, 223' left of centerline, 63' AGL/722' MSL. Train on railroad, 744' from DER, on centerline, 23' AGL/676' MSL. **Rwy 35**, trees beginning 167' from DER, 477' right of centerline, up to 66' AGL/710' MSL. Tree 2012' from DER, 863' left of centerline, 67' AGL/716' MSL.

31 MAY 2012 to 28 JUN 2012

31 MAY 2012 to 28 JUN 2012

12152

TAKE-OFF MINIMUMS AND (OBSTACLE) DEPARTURE PROCEDURES

TAKE-OFF MINIMUMS AND (OBSTACLE) DEPARTURE PROCEDURES

12152

MARION, IL

WILLIAMSON COUNTY RGNL (MWA)

ORIG-A 10070 (FAA)

TAKE-OFF MINIMUMS: **Rwy 11**, 600-3 or std. with a min. climb of 235' per NM to 1200.

DEPARTURE PROCEDURE: **Rwy 11**, Climb via heading 107° to 1100 before turning left.

NOTE: **Rwy 2**, trees beginning 119' from DER, 265' left of centerline, up to 106' AGL/543' MSL. **Rwy 11**, poles beginning 630' from DER, 496' right of centerline, up to 75' AGL/518' MSL. Tree 1298' from DER, 594' right of centerline, 81' AGL/528' MSL. Tank 5154' from DER, 800' right of centerline, 164' AGL/601' MSL. Tower 3.16 NM from DER, 1.32 NM left of centerline, 490' AGL/980' MSL. **Rwy 20**, trees beginning 1538' from DER, 823' right of centerline, up to 68' AGL/521' MSL.

Rwy 29, wind sock 341' from DER, 291' left of centerline, 11' AGL/461' MSL. Trees beginning 559' from DER, 360' right of centerline, up to 77' AGL/534' MSL. Theater screen 1347' from DER, 634' right of centerline, 77' AGL/530' MSL.

MARSHFIELD, WI

MARSHFIELD MUNI (MFI)

ORIG 06271 (FAA)

NOTE: **Rwy 34**, multiple trees beginning 1412' from departure end of runway, 532' left of centerline, up to 60' AGL/1359' MSL.

MATTOON-CHARLESTON, IL

COLES COUNTY MEMORIAL (MTO)

AMDT 4 09351 (FAA)

NOTE: **Rwy 11**, trees beginning 1842' from DER, 869' left of centerline, up to 100' AGL/803' MSL.

MEDFORD, WI

TAYLOR COUNTY (MDZ)

AMDT 2 09071 (FAA)

NOTE: **Rwy 9**, trees beginning 1123' from DER, 561' left of centerline, up to 61' AGL/1540' MSL. Tree 2555' from DER, 592' right of centerline, 75' AGL/1544' MSL. **Rwy 16**, trees beginning 7' from DER, 248' left of centerline, up to 75' AGL/1524' MSL. Vehicle plus road beginning 33' from DER, 8' left of centerline, up to 15' AGL/1466' MSL. Vehicle plus road beginning 27' from DER, 93' right of centerline, up to 15' AGL/1462' MSL. **Rwy 27**, tower 2839' from DER, 1111' left of centerline, 150' AGL/1580' MSL. Trees beginning 1040' from DER, 49' left of centerline, up to 75' AGL/1526' MSL. Silo 1593' from DER, 789' right of centerline, 30' AGL/1499' MSL. Trees beginning 2008' from DER, 147' right of centerline, up to 68' AGL/1527' MSL. **Rwy 34**, terrain, trees and poles beginning 37' from DER, 187' right of centerline, up to 41' AGL/1510' MSL. Vehicle plus road beginning 490' from DER, 485' right of centerline, up to 15' AGL/1476' MSL.

MENOMONIE, WI

MENOMONIE MUNI-SCORE FIELD (LUM)

AMDT 1 11349 (FAA)

TAKE-OFF MINIMUMS: **Rwy 18**, 500-2 or std. w/min. climb of 584' per NM to 1600.

DEPARTURE PROCEDURE: **Rwy 18**, climb heading 176° to 1500 before turning right. **Rwy 36**, climb heading 356° to 1600 before turning left.

NOTE: **Rwy 9**, buildings beginning 116' from DER, 346' right of centerline, up to 40' AGL/939' MSL. **Rwy 18**, trees beginning 891' from DER, 377' right of centerline, up to 100' AGL/999' MSL. Trees beginning 923' from DER, 158' left of centerline, up to 100' AGL/999' MSL. Power lines 1295' from DER, left and right of centerline, up to 32' AGL/931' MSL. Building 1989' from DER, 645' right of centerline, up to 100' AGL/999' MSL. Trees beginning 2120' from DER, 417' right of centerline, up to 100' AGL/1079' MSL. Terrain beginning 2278' from DER, 746' right of centerline, 999' MSL. **Rwy 27**, trees beginning 433' from DER, 545' right of centerline, up to 44' AGL/943' MSL. Antenna on stk, 2666' from DER, 660' left of centerline, 98' AGL/987' MSL. Trees beginning 792' from DER, 447' left of centerline, up to 46' AGL/935' MSL. Pole 706' from DER, 636' right of centerline, 32' AGL/931' MSL. Trees beginning 2619' from DER, 581' left of centerline, up to 83' AGL/972' MSL. **Rwy 36**, multiple buildings beginning 472' from DER, 471' left of centerline, up to 40' AGL/959' MSL. Vehicle on road 669' from DER, left and right of centerline, up to 15' AGL/934' MSL. Building 809' from DER, 607' right of centerline, up to 40' AGL/959' MSL. Trees beginning 2220' from DER, left and right of centerline, up to 100' AGL/999' MSL.

MERRILL, WI

MERRILL MUNI (RRL)

ORIG 07242 (FAA)

NOTE: **Rwy 7**, bush 55' from departure end of runway, 468' left of centerline, 5' AGL/1311' MSL. Pole 392' from departure end of runway, 512' right of centerline, 23' AGL/1329' MSL. Building 358' from departure end of runway, 451' right of centerline, 21' AGL/1327' MSL. Multiple trees beginning 905' from departure end of runway, from 727' right to 552' left of centerline, up to 91' AGL/1400' MSL. Multiple trees beginning 2597' from departure end of runway, from 22' right to 86' left of centerline, up to 82' AGL/1401' MSL. **Rwy 16**, multiple trees beginning 1587' from departure end of runway, on centerline, up to 100' AGL/1439' MSL. **Rwy 25**, bush 132' from departure end of runway, 494' right of centerline, 13' AGL/1331' MSL. Pole 1240' from departure end of runway, 778' left of centerline, 37' AGL/1356' MSL. Multiple trees beginning 1085' from departure end of runway, from 554' right to 359' left of centerline, up to 69' AGL/1388' MSL. **Rwy 34**, multiple trees beginning 49' from departure end of runway, from 33' right to 139' left of centerline, up to 100' AGL/1439' MSL.

MIDDLETON, WI

MIDDLETON MUNI-MOREY FIELD (C29)

AMDT 1 05356 (FAA)

TAKE-OFF MINIMUMS: **Rwy 28**, 300-1 or std. with a min. climb of 468' per NM to 1300. **Rwys 1, 19**, NA-turf.

DEPARTURE PROCEDURE: **Rwy 10**, climb via heading 101° to 2600 before proceeding on course. **Rwy 28**, climb via heading 281° to 2600 before proceeding on course.

NOTE: **Rwy 28**, multiple trees beginning 2067' from departure end of runway, 583' left of centerline, up to 60' AGL/1032' MSL.

31 MAY 2012 to 28 JUN 2012

31 MAY 2012 to 28 JUN 2012

12152

TAKE-OFF MINIMUMS AND (OBSTACLE) DEPARTURE PROCEDURES

TAKE-OFF MINIMUMS AND (OBSTACLE) DEPARTURE PROCEDURES

12152

MILWAUKEE, WI

GENERAL MITCHELL INTL (MKE)
AMDT 8 12152 (FAA)

TAKE-OFF MINIMUMS: **Rwy 7R**, 300-1½ or std. w/min. climb of 290' per NM to 1100. **Rwy 31**, 300-1½ or std. w/min. climb of 255' per NM to 1000.

NOTE: **Rwy 1L**, fence 148' from DER, left and right of centerline, up to 10' AGL/678' MSL. Pole 575' from DER, 594' left of centerline, 18' AGL/689' MSL. Pole 1859' from DER, 912' right of centerline, 18' AGL/734' MSL. Antenna 1928' from DER, 1' right of centerline, 15' AGL/727' MSL. Terrain beginning 1671' from DER, 751' left of centerline, up to 726' MSL. Tower and poles beginning 2284' from DER, 463' right of centerline, up to 31' AGL/750' MSL. Trees beginning 2492' from DER, 901' left of centerline, up to 59' AGL/780' MSL. Trees 3256' from DER, 445' left of centerline, up to 68' AGL/769' MSL. Trees beginning 3697' from DER, 154' right of centerline, up to 84' AGL/776' MSL. **Rwy 1R**, terrain 11' from DER, left and right of centerline, up to 673' MSL. Rod 581' from DER, 600' left of centerline, 48' AGL/719' MSL. Tree 4336' from DER, 462' right of centerline, 64' AGL/795' MSL. **Rwy 7L**, terrain beginning 177' from DER, 145' right of centerline, 683' MSL. Terrain beginning 61' from DER, 143' left of centerline, 686' MSL. Building 319' from DER, 456' right of centerline, 25' AGL/696' MSL. Poles beginning 1727' from DER, 48' left of centerline, up to 60' AGL/751' MSL. Trees beginning 1407' from DER, 458' left of centerline, up to 93' AGL/822' MSL. Tree 3817' from DER, 176' right of centerline, 84' AGL/785' MSL. **Rwy 7R**, lights, signs, and terrain beginning 23' from DER, 85' left of centerline, up to 2' AGL/672' MSL. Poles and railroad 708' from DER, left and right of centerline, up to 23' AGL/711' MSL. Trees beginning 2194' from DER, 250' left of centerline, up to 71' AGL/742' MSL. Trees beginning 2244' from DER, 124' right of centerline, up to 93' AGL/764' MSL. Stack 1.2 NM from DER, 2099' right of centerline, 215' AGL/930' MSL. Stack 1.3 NM from DER, 1166' left of centerline, 180' AGL/891' MSL. **Rwy 13**, terrain 19' from DER, 223' left of centerline, 673' MSL. Terrain 59' from DER, 152' right of centerline, 673' MSL. Poles, trees, and railroad beginning 966' from DER, 208' left of centerline, up to 40' AGL/711' MSL. Poles, trees, and railroad 1172' from DER, 7' right of centerline, up to 46' AGL/717' MSL. Trees beginning 2172' from DER, 208' left of centerline, up to 79' AGL/750' MSL. Tree 2227' from DER, 1035' left of centerline, 79' AGL/750' MSL. **Rwy 19L**, tower 1837' from DER, 559' right of centerline, 71' AGL/749' MSL. **Rwy 19R**, terrain beginning 174' from DER, left and right of centerline, up to 712' MSL. **Rwy 25L**, antenna 217' from DER, 300' right of centerline, 14' AGL/735' MSL. Tree 2679' from DER, 305' right of centerline, 68' AGL/799' MSL. Antenna and tree 2790' from DER, 1200' right of centerline, up to 71' AGL/820' MSL. **Rwy 25R**, pole 604' from DER, 336' left of centerline, 38' AGL/709' MSL. Hangar 625' from DER, 363' right of centerline, 31' AGL/702' MSL. Tree 1297' from DER, 187' left of centerline, 45' AGL/716' MSL. Pole 1605' from DER, 301' right of centerline, 49' AGL/720' MSL. **Rwy 31**, terrain 31' from DER, 70' right of centerline, 676' MSL. Fence 197' from DER, left and right of centerline, up to 10' AGL/681' MSL. Sign 219' from DER, 450' right of centerline, 51' AGL/730' MSL. Poles 265' from DER, left and right of centerline, up to 25' AGL/706' MSL. Trees beginning 1362' from DER, 390' left of centerline, up to 52' AGL/731' MSL. Trees and pole beginning 1351' from DER, 341' right of centerline, up to 69' AGL/758' MSL. Trees and pole beginning 2390' from DER, 345' right of centerline, up to 56' AGL/775' MSL. Tank 1.1 NM from DER, 742' right of centerline, 167' AGL/885' MSL.

MILWAUKEE, WI (CON'T)

LAWRENCE J. TIMMERMAN (MWC)

AMDT1 10322 (FAA)

TAKE-OFF MINIMUMS: **Rwys 4R, 15R, 22L, 33L**, N/A Environmental and obstacles.

DEPARTURE PROCEDURE: **Rwy 4L**, climb heading 038° to 2100 before turning East. **Rwy 15L**, climb heading 148° to 2100 before turning East. **Rwy 22R**, climb heading 218° to 2100 before turning East.

Rwy 33R, climb heading 328° to 2100 before turning East.

NOTE: **Rwy 4L**, building 75' from DER, 480' left of centerline, 33' AGL/771' MSL. Fence 197' from DER, 381' left of centerline, 6' AGL/745' MSL. Billboard 565' from DER, 176' left of centerline, 17' AGL/755' MSL. AC equipment 926' from DER, 741' left of centerline, 70' AGL/808' MSL. Tree 1106' from DER, 731' right of centerline, 70' AGL/808' MSL. Building 887' from DER, 641' right of centerline, 67' AGL/805' MSL. Numerous trees beginning 623' from DER, right and left of centerline, up to 100' AGL/820' MSL. Vehicle on road 517' from DER on centerline, 17' AGL/755' MSL. **Rwy 15L**, antenna on building 437' from DER, 264' left of centerline, 12' AGL/756' MSL. Numerous trees beginning 487' from DER, right and left of centerline, up to 100' AGL/856' MSL. Vehicle on road 627' from DER, 337' left of centerline, 24' AGL/186' MSL. Billboard 816' from DER, 297' left of centerline, 31' AGL/775' MSL. **Rwy 22R**, trees beginning 553' from DER, right and left of centerline, up to 100' AGL/820' MSL. **Rwy 33R**, trees beginning 495' from departure end of runway, 18' left of centerline, up to 100' AGL/797' MSL. Tree 1257' from DER, 130' right of centerline, 100' AGL/783' MSL.

MINERAL POINT, WI

IOWA COUNTY (MRJ)

ORIG 11293 (FAA)

NOTE: **Rwy 4**, trees beginning 503' from DER, 103' right of centerline, up to 100' AGL/1289' MSL. Trees beginning 2199' from DER, 667' left of centerline, up to 100' AGL/1279' MSL. **Rwy 11**, trees beginning 95' from DER, 79' right of centerline, up to 100' AGL/1259' MSL. Trees beginning 467' from DER, 517' left of centerline, up to 100' AGL/1259' MSL. **Rwy 22**, vehicles on road beginning 102' from DER, left and right of centerline, up to 15' AGL/1184' MSL. Trees beginning 324' from DER, 40' right of centerline, up to 100' AGL/1279' MSL. Tree 1241' from DER, 627' left of centerline, 100' AGL/1239' MSL. **Rwy 29**, trees beginning 536' from DER, 497' right of centerline, up to 100' AGL/1179' MSL. Trees beginning 1319' from DER, 571' left of centerline, up to 100' AGL/1209' MSL.

31 MAY 2012 to 28 JUN 2012

31 MAY 2012 to 28 JUN 2012

12152

TAKE-OFF MINIMUMS AND (OBSTACLE) DEPARTURE PROCEDURES

TAKE-OFF MINIMUMS AND (OBSTACLE) DEPARTURE PROCEDURES

12152

MINOCQUA-WOODRUFF, WI LAKELAND/NOBLE F. LEE MEMORIAL FIELD (ARV) ORIG 09351 (FAA)

NOTE: **Rwy 10**, trees beginning 239' from DER, 545' right of centerline, up to 100' AGL/1729' MSL. Trees beginning 424' from DER, 576' left of centerline, up to 100' AGL/1729' MSL. **Rwy 18**, trees beginning 785' from DER, 482' right of centerline, up to 100' AGL/1729' MSL. Trees beginning 825' from DER, 506' left of centerline, up to 100' AGL/1729' MSL. **Rwy 28**, trees beginning 659' from DER, 564' right of centerline, up to 100' AGL/1729' MSL. Trees beginning 474' from DER, 432' left of centerline, up to 100' AGL/1729' MSL.

Rwy 36, trees and windsock beginning 157' from DER, 5' right of centerline, up to 96' AGL/1725' MSL. Trees beginning 1280' from DER, 29' left of centerline, up to 100' AGL/1749' MSL.

MOLINE, IL QUAD CITY INTL (MLI) ORIG 11069 (FAA)

TAKE-OFF MINIMUMS: **Rwy 10**, 300-1¼ or std. w/min. climb gradient of 218' per NM to 900, or alternatively, with standard takeoff minimums and a normal 200' per NM climb gradient, takeoff must occur no later than 1500' prior to DER.

DEPARTURE PROCEDURE: **Rwy 10**, climb heading 090° to 1500 before turning left. **Rwy 28**, climb heading 270° to 1200 before turning right.

NOTE: **Rwy 10**, aircraft taxi operations 159' from DER, 353' left of centerline, up to 45' AGL/624' MSL. Tower 4605' from DER, 899' left of centerline, 120' AGL/712' MSL. Trees beginning 6035' from DER, 1243' right of centerline, up to 99' AGL/745' MSL. **Rwy 28**, vehicles on roadway beginning 255' from DER, 559' left of centerline, up to 15' AGL/594' MSL. Trees beginning 1553' from DER, 106' right of centerline, up to 50' AGL 622' MSL.

MONEE, IL BULT FIELD (C56) ORIG 09071 (FAA)

NOTE: **Rwy 9**, vehicle on road 145' from DER, on centerline, 15' AGL/785' MSL. **Rwy 27**, vehicle on road 150' from DER, on centerline, 15' AGL/797' MSL. Metal chimney 305' from DER, 210' left of centerline, 29' AGL/812' MSL. Tree 367' from DER, 161' left of centerline, 40' AGL/819' MSL. Pole barn 421' from DER, 202' left of centerline, 22' AGL/801' MSL. Trees beginning 1484' from DER, 223' right of centerline, up to 100' AGL/859' MSL.

MONMOUTH, IL MONMOUTH MUNI (C66) AMDT 2 93231 (FAA)

TAKE-OFF MINIMUMS: **Rwy 20**, 400-2.

MONROE, WI MONROE MUNI (EFT) AMDT 2 09127 (FAA)

NOTE: **Rwy 2**, vehicle on road 926' from DER, left and right of centerline, up to 17' AGL/1116' MSL. Trees beginning 182' from DER, 175' right of centerline, up to 100' AGL/1169' MSL. **Rwy 12**, trees beginning 1234' from DER, 655' right of centerline, up to 100' AGL/1189' MSL. **Rwy 20**, trees beginning 712' from DER, 288' right of centerline, up to 100' AGL/1129' MSL. **Rwy 30**, trees beginning 1918' from DER, 87' right of centerline, up to 100' AGL/1209' MSL. Vehicle on road 1166' from DER, 157' right of centerline, up to 17' AGL/1126' MSL.

MONTICELLO, IL PIATT COUNTY (2K0) ORIG 11293 (FAA)

DEPARTURE PROCEDURE: Climb heading 360° to 1200 before turning left.

NOTE: **Rwy 18**, trees beginning 1092' from DER, 146 left of centerline, up to 100' AGL/821' MSL. Trees beginning 1603' from DER, 91' right of centerline, up to 100' AGL/821' MSL. **Rwy 36**, power poles beginning 457' from DER, 213' right of centerline, up to 40' AGL/777' MSL. Hangars beginning 193' from DER, 317' left of centerline, up to 25' AGL/760' MSL. Hangar 345' from DER, 171' right of centerline, 30' AGL/766' MSL. Vehicle on road 508' from DER, 162' right of centerline, 15' AGL/752' MSL. Houses beginning 597' from DER, 254' right of centerline, up to 30' AGL/767' MSL.

MORRIS, IL MORRIS MUNI - JAMES R. WASHBURN FIELD (C09) ORIG 08325 (FAA)

TAKE-OFF MINIMUMS: **Rwy 18**, 400-2 or std. w/min. climb of 320' per NM to 1000.

NOTE: **Rwy 18**, tree 511' from departure end of runway, 607' right of centerline, 100' AGL/659' MSL. Tower 8810' from departure end of runway, 647' right of centerline, 290' AGL/840' MSL. **Rwy 36**, trees beginning 1562' from departure end of runway, 758' right of centerline extending to 722' left of centerline, 100' AGL/679' MSL.

MOSINEE, WI CENTRAL WISCONSIN (CWA) ORIG 85185 (FAA)

TAKE-OFF MINIMUMS: **Rwy 35**, 300-1.

DEPARTURE PROCEDURE: **Rwy 35**, (northbound departures 350° CW 045°) climbing left turn to 3500 via AUW R-270 before turning on course.

MOUNT CARMEL, IL MOUNT CARMEL MUNI (AJG) ORIG 97338 (FAA)

TAKE-OFF MINIMUMS: **Rwy 22**, 300-1 or std. with a min. climb of 340' per NM to 700.

MOUNT STERLING, IL MOUNT STERLING MUNI (I63) ORIG 09183 (FAA)

NOTE: **Rwy 18**, trees beginning 1555' from DER, 309' right of centerline, up to 95' AGL/784' MSL. Tree 2243' from DER, 856' left of centerline, 100' AGL/819' MSL. **Rwy 36**, vehicle on road and pole 686' from DER, 486' right of centerline, up to 60' AGL/779' MSL. Vehicle on road and trees beginning 679' from DER, 365' left of centerline, up to 100' AGL/839' MSL.

31 MAY 2012 to 28 JUN 2012

31 MAY 2012 to 28 JUN 2012

12152

TAKE-OFF MINIMUMS AND (OBSTACLE) DEPARTURE PROCEDURES

TAKE-OFF MINIMUMS AND (OBSTACLE) DEPARTURE PROCEDURES

12152

MOUNT VERNON, IL

MOUNT VERNON (MVN)

ORIG 07074 (FAA)

DEPARTURE PROCEDURE: **Rwy 33**, climb via heading 331° to 1300 before turning left.

NOTE: **Rwy 5**, multiple trees beginning 1615' from departure end of runway, 7' left of centerline, up to 134' AGL/602' MSL, antenna 2477' from departure end of runway, 990' right of centerline, 79' AGL/547' MSL, tree 3329' from departure end of runway, 519' right of centerline, 98' AGL/566' MSL. **Rwy 15**, multiple trees beginning 712' from departure end of runway, 17' right of centerline, up to 71' AGL/529' MSL, tree 908' from departure end of runway, 465' left of centerline, 70' AGL/527' MSL, railroad 608' from departure end of runway, 159' right of centerline, 23' AGL/479' MSL, road 564' from departure end of runway, 3' right of centerline, 15' AGL/472' MSL. **Rwy 23**, multiple trees beginning 1705' from departure end of runway, 102' right of centerline, up to 72' AGL/539' MSL, tree 1797' from departure end of runway, 158' left of centerline, 57' AGL/524' MSL, railroad 238' from departure end of runway, 500' left of centerline, 23' AGL/485' MSL, multiple roads beginning 12' from departure end of runway, 367' left of centerline, up to 15' AGL/479' MSL, fencepost 291' from departure end of runway, 426' right of centerline, 9' AGL/476' MSL. **Rwy 33**, multiple trees beginning 696' from departure end of runway, 130' right of centerline, up to 93' AGL/573' MSL, multiple trees beginning 689' from departure end of runway, 216' left of centerline, up to 105' AGL/585' MSL.

NECEDAH, WI

NECEDAH (DAF)

ORIG 11265 (FAA)

NOTE: **Rwy 18**, road beginning at DER, left and right of centerline, up to 15' AGL/934' MSL. Trees and buildings beginning at DER, 446' left of centerline, up to 100' AGL/1019' MSL. Trees and buildings beginning at DER, 317' right of centerline, up to 100' AGL/1019' MSL. **Rwy 36**, trees beginning 711' from DER, 687' left of centerline, up to 100' AGL/1021' MSL. Power lines, building and railroad beginning 19' from DER, 268' right of centerline, up to 100' AGL/1012' MSL.

NEW HOLSTEIN, WI

NEW HOLSTEIN MUNI (8D1)

ORIG 11293 (FAA)

TAKE-OFF MINIMUMS: **Rwys 4, 22**, NA - Environmental. **Rwy 32**, 300-1 or std. w/min. climb of 350' per NM to 1200.

NOTE: **Rwy 14**, rising terrain beginning 135' from DER, 187' left of centerline, up to 985' MSL. Terrain with trees beginning 143' from DER, left and right of centerline, up to 100' AGL/1117' MSL. **Rwy 32**, vehicles on road beginning 6' from DER, 19' right of centerline, up to 19' AGL/998' MSL. Poles beginning 332' from DER, left and right of centerline, up to 37' AGL/1033' MSL. Terrain with trees beginning 561' from DER, left and right of centerline, up to 100' AGL/1129' MSL.

NEW LISBON, WI

MAUSTON-NEW LISBON UNION (82C)

ORIG 97198 (FAA)

TAKE-OFF MINIMUMS: **Rwys 14, 32**, 400-1 or std. with a min. climb of 220' per NM to 1400.

NEW RICHMOND, WI

NEW RICHMOND RGNL (RNH)

ORIG 07354 (FAA)

NOTE: **Rwy 14**, multiple trees beginning 810' from departure end of runway, 230' left of centerline, up to 100' AGL/1099' MSL. Vehicle on road 502' from departure end of runway, 612' left of centerline, 15' AGL/1014' MSL. **Rwy 32**, vehicle on road 425' from departure end of runway, 591' left of centerline, 15' AGL/1014' MSL. Multiple trees beginning 1460' from departure end of runway, 443' right of centerline, up to 100' AGL/1099' MSL.

OCONTO, WI

J. DOUGLAS BAKE MEMORIAL (OCQ)

ORIG 11181 (FAA)

TAKE-OFF MINIMUMS: **Rwys 4, 22**, NA - ATC.

NOTE: **Rwy 11**, trees beginning 8' from DER, left and right of centerline, up to 91' AGL/693' MSL. **Rwy 29**, trees beginning 342' from DER, left and right of centerline, up to 80' AGL/684' MSL. Vehicle on road beginning 182' from DER, 286' right of centerline, 15' AGL/619' MSL. Fence 340' from DER, 553' left of centerline, 9' AGL/614' MSL. REIL 14' from DER, 76' left of centerline, 1' AGL/605' MSL.

OLNEY/NOBLE, IL

OLNEY/NOBLE (OLY)

ORIG 10098 (FAA)

NOTE: **Rwy 3**, trees beginning 11' from DER, 108' left of centerline, up to 100' AGL/579' MSL. **Rwy 11**, trees beginning 27' from DER, 292' right of centerline, up to 100' AGL/579' MSL. Trees beginning 1928' from DER, 719' left of centerline, up to 100' AGL/569' MSL. **Rwy 21**, trees beginning 43' from DER, 405' right of centerline, up to 100' AGL/569' MSL. Vehicles on roadway beginning 197' from DER, left and right of centerline, up to 17' AGL/494' MSL. **Rwy 29**, vehicles on roadway beginning 481' from DER, left and right of centerline, up to 15' AGL/504' MSL. Trees beginning 703' from DER, 30' left of centerline, up to 100' AGL/589' MSL. Trees beginning 3791' from DER, left and right of centerline, up to 100' AGL/599' MSL.

OSCEOLA, WI

L.O. SIMENSTAD MUNI (OEO)

ORIG 07074 (FAA)

TAKE-OFF MINIMUMS: **Rwys 4, 22**, NA-environmental.

NOTE: **Rwy 10**, multiple trees beginning 9951' from departure end of runway, 3135' right of centerline, up to 100' AGL/1159' MSL. Multiple trees beginning 1785' from departure end of runway, 932' left of centerline, up to 100' AGL/1149' MSL. **Rwy 28**, multiple trees beginning 3534' from departure end of runway, 1277' right of centerline, up to 100' AGL/979' MSL. Truck on road beginning 421' from departure end of runway 71' left of centerline, 15' AGL/904' MSL.

31 MAY 2012 to 28 JUN 2012

31 MAY 2012 to 28 JUN 2012

TAKE-OFF MINIMUMS AND (OBSTACLE) DEPARTURE PROCEDURES

12152

OSHKOSH, WI

WITTMAN RGNL (OSH)
ORIG 08157 (FAA)

NOTE: **Rwy 4**, vehicle on road 450' from departure end of runway, on centerline, 15' AGL/794' MSL. Trees beginning 577' from departure end of runway, 66' right of centerline, up to 41' AGL/810' MSL. Trees beginning 1053' from departure end of runway, 391' left of centerline, up to 100' AGL/869' MSL. **Rwy 9**, vehicle on road 620' from departure end of runway, on centerline, 15' AGL/794' MSL. Trees and hanger beginning 223' from departure end of runway, 192' right of centerline, up to 104' AGL/863' MSL. Trees, poles beginning 546' from departure end of runway, 280' left of centerline, up to 93' AGL/852' MSL. **Rwy 13**, trees, buildings and poles beginning 503' from departure end of runway, 3' right of centerline, up to 100' AGL/889' MSL. Trees 400' from departure end of runway, 350' left of centerline, 72' AGL/841' MSL. **Rwy 22**, vehicle on road 830' from departure end of runway, on centerline, 15' AGL/814' MSL. Trees and pole beginning 530' from departure end of runway, 193' right of centerline, up to 100' AGL/919' MSL. Antenna and airport beacon on ATCT 1689' from departure end of runway, 869' left of centerline, 88' AGL/883' MSL. **Rwy 27**, trees 1063' from departure end of runway, 583' right of centerline, up to 100' AGL/919' MSL. Trees and traffic signal 2505' from departure end of runway, 307' left of centerline, 100' AGL/949' MSL. **Rwy 31**, trees and antenna on building beginning 1133' from departure end of runway, 347' right of centerline, up to 100' AGL/889' MSL. Trees beginning 3860' from departure end of runway, 1,472' left of centerline, up to 100' AGL/909' MSL. **Rwy 36**, antenna on building 551' from departure end of runway, 263' right of centerline, 14' AGL/803' MSL.

PARIS, IL

EDGAR COUNTY (PRG)
ORIG 07354 (FAA)

NOTE: **Rwy 9**, trees beginning 1923' from departure end of runway, on centerline, up to 100' AGL/744' MSL. **Rwy 27**, elevator 1301' from departure end of runway, 255' left of centerline, 50' AGL/711' MSL. Trees beginning 1301' from departure end of runway, 255' left of centerline, up to 100' AGL/754' MSL. Trees beginning 366' from departure end of runway, 295' right of centerline, up to 100' AGL/759' MSL.

PARK FALLS, WI

PARK FALLS MUNI (PKF)
ORIG 99028 (FAA)

DEPARTURE PROCEDURE: **Rwys 18, 36**, climb runway heading to 3400 before turning east.

PAXTON, IL

PAXTON (1C1)
AMDT 1 10182 (FAA)

TAKE-OFF MINIMUMS: **Rwy 36**, 300-1½ or std. w/ min. climb of 321' per NM to 1200.

DEPARTURE PROCEDURE: **Rwy 36**, vehicles on road 439' from DER, crossing from left to right, up to 15' AGL/796' MSL. Trees beginning 557' from DER, 31' right of centerline, up to 60' AGL/849' MSL. Tower 1.1 NM from DER, 1761' left of centerline, 179' AGL/983' MSL.

PEKIN, IL

PEKIN MUNI (C15)
ORIG 08269 (FAA)

NOTE: **Rwy 9**, trees beginning 62' from departure end of runway, 411' right of centerline, up to 63' AGL/583' MSL. Poles beginning 819' from departure end of runway, 388' left of centerline, up to 32' AGL/552' MSL. Poles beginning 824' from departure end of runway, 411' right of centerline, up to 34' AGL/554' MSL. **Rwy 27**, rising terrain 718' from departure end of runway, 103' left of centerline, up to 550' MSL.

PEORIA, IL

GENERAL DOWNING - PEORIA INTL (PIA)
ORIG 05076 (FAA)

DEPARTURE PROCEDURE: **Rwy 13**, climb via heading 126° to 1400 before turning left.

NOTE: **Rwy 4**, tank 5023' from departure end of runway, 1616' left of centerline, 131' AGL/781' MSL. Multiple trees beginning 1425' from departure end of runway, 573' left of centerline, up to 91' AGL/740' MSL. **Rwy 13**, multiple trees beginning 990' from departure end of runway, 582' left of centerline, up to 45' AGL/676' MSL. Tower 4.5 miles from departure end of runway, 2.5 NM left of centerline, 656' AGL/1340' MSL. **Rwy 22**, tree 1475' from departure end of runway, 554' right of centerline, 54' AGL/693' MSL. Tree 1475' from departure end of runway, 669' right of centerline, 64' AGL/694' MSL. **Rwy 31**, tree 5039' from departure end of runway, 252' right of centerline, 60' AGL/769' MSL. Multiple trees beginning 1196' from departure end of runway, 252' right of centerline, up to 69' AGL/769' MSL.

PEORIA, IL (CONT)

MOUNT HAWLEY AUXILIARY (3MY)
AMDT 2A 10154 (FAA)

NOTE: **Rwy 18**, train on railroad tracks 161' from DER, 414' right of centerline, 23' AGL/802' MSL. Fence 366' from DER, 388' left of centerline, 5' AGL/784' MSL. Trees beginning 369' from DER, 21' left of centerline, up to 54' AGL/833' MSL. Trees beginning 404' from DER, 17' right of centerline, up to 74' AGL/853' MSL. Rooflines beginning 708' from DER, 215' left of centerline, 22' AGL/801' MSL. Peaks beginning 714' from DER, 225' left of centerline, 30' AGL/809' MSL. **Rwy 36**, rooflines beginning 205' from DER, 438' right of centerline, 18' AGL/797' MSL. Peaks beginning 239' from DER, 374' right of centerline, up to 37' AGL/816' MSL. Light poles beginning 249' from DER, 390' right of centerline, up to 66' AGL/845' MSL. Antenna 2711' from DER, 655' left of centerline, 61' AGL/858' MSL.

PERU, IL

ILLINOIS VALLEY RGNL-WALTER A. DUNCAN
FIELD (VYS)
ORIG 06103 (FAA)

DEPARTURE PROCEDURE: **Rwy 18**, climb via heading 195° to 1400 before turning east.

31 MAY 2012 to 28 JUN 2012

31 MAY 2012 to 28 JUN 2012

TAKE-OFF MINIMUMS AND (OBSTACLE) DEPARTURE PROCEDURES

12152

PHILLIPS, WI

PRICE COUNTY (PBH)

AMDT 1 11349 (FAA)

TAKE-OFF MINIMUMS: **Rwy 6**, 300-1¼ or std. w/min. climb of 220' per NM to 1700. **Rwy 19**, 300-1 or std. w/min. climb of 353' per NM to 1800.

NOTE: **Rwy 1**, trees beginning 121' from DER, 189' right of centerline, up to 80' AGL/1599' MSL. Trees beginning 289' from DER, 104' left of centerline, up to 64' AGL/1567' MSL. **Rwy 6**, trees beginning 9' from DER, 224' right of centerline, up to 100' AGL/1569' MSL. Trees beginning 5' from DER, 223' left of centerline, up to 100' AGL/1569' MSL. Trees beginning 1 NM from DER, on centerline, up to 100' AGL/1639' MSL. **Rwy 19**, trees beginning 1986' from DER, 8' right of centerline, up to 68' AGL/1527' MSL. Tank and trees beginning 62' from DER, 43' left of centerline, up to 144' AGL/1624' MSL. **Rwy 24**, hangers and trees beginning 110' from DER, 443' right of centerline, up to 100' AGL/1609' MSL. Hanger, trees and vehicles on road beginning 128' from DER, 397' left of centerline, up to 100' AGL/1549' MSL.

PINCKNEYVILLE, IL

PINCKNEYVILLE-DU QUOIN (PJY)

ORIG 11265 (FAA)

NOTE: **Rwy 18**, vehicle on road beginning at DER, 340' left of centerline, 15' AGL/409' MSL. Power lines and vehicle on road beginning 507' from DER, left and right of centerline, up to 40' AGL/434' MSL. **Rwy 36**, trees beginning 1740' from DER, 724' right of centerline, up to 100' AGL/495' MSL.

PLATTEVILLE, WI

PLATTEVILLE MUNI (PVB)

ORIG 09239 (FAA)

NOTE: **Rwy 7**, vehicle on road beginning 499' from DER, left to right of centerline, up to 15' AGL/1053' MSL. Pavilion 250' from DER, 345' left of centerline, 17' AGL/1039' MSL. Poles beginning 208' from DER, 438' left of centerline, up to 37' AGL/1059' MSL. Trees beginning 224' from DER, 17' right of centerline, up to 47' AGL/1069' MSL. Trees beginning 257' from DER, 222' left of centerline, up to 29' AGL/1051' MSL. **Rwy 25**, tree 91' from DER, 277' left of centerline, 21' AGL/1020' MSL. Trees beginning 57' from DER, 325' right of centerline, up to 10' AGL/1009' MSL. **Rwy 15**, tree 1145' from DER, 620' right of centerline, 52' AGL/1073' MSL. Trees beginning 61' from DER, 208' left of centerline, up to 11' AGL/1032' MSL.

PONTIAC, IL

PONTIAC MUNI (PNT)

ORIG 08213 (FAA)

NOTE: **Rwy 24**, multiple buildings beginning 766' from departure end of runway, 60' left of centerline, up to 28' AGL/672' MSL. Tree 2226' from departure end of runway, 1040' right of centerline, 100' AGL/744' MSL. Multiple light poles beginning 3635' from departure end of runway, 262' right of centerline, up to 130' AGL/774' MSL.

POPLAR GROVE, IL

POPLAR GROVE (C77)

ORIG 99308 (FAA)

TAKE-OFF MINIMUMS: **Rwy 30**, 300-1 or std. with a min. climb of 310' per NM to 1000. **Rwys 9, 12, 17, 27, 35**, NA.

PORTAGE, WI

PORTAGE MUNI (C47)

AMDT 1 83286 (FAA)

TAKE-OFF MINIMUMS: **Rwys 17, 22**, 300-1 or std. with a min. climb of 265' per NM to 1000.

PRAIRIE DU CHIEN, WI

PRAIRIE DU CHIEN MUNI (PDC)

AMDT 3A 10322 (FAA)

TAKE-OFF MINIMUMS: **Rwys 29, 32**, 800-2 or std. w/min. climb of 289' per NM to 1700.

DEPARTURE PROCEDURE: **Rwys 11, 29, 14, 32**, climb to 2000 before turning on course.

NOTE: **Rwy 14**, trees at DER, 490' left of centerline, up to 100' AGL/732' MSL. Numerous trees beginning 1300' from DER, 195' left to right of centerline, up to 100' AGL/733' MSL. **Rwy 29**, tower 9416' right of DER, 300' AGL/1440' MSL. Transmission lines pole 1778' from DER, 968' right of centerline, 57' AGL/708' MSL. **Rwy 32**, transmission lines poles beginning 1861' from DER, 326' right of centerline, up to 61' AGL/710' MSL.

PRAIRIE DU SAC, WI

SAUK-PRAIRIE (91C)

ORIG 07354 (FAA)

TAKE-OFF MINIMUMS: **Rwy 36**, std. w/min. climb gradient of 221' per NM to 1700 or 1000-3 for climb in visual conditions.

DEPARTURE PROCEDURE: **Rwy 36**, climb heading 357° to 1700 before turning or for climb in visual conditions cross Sauk-Prairie Airport at or above 1700 MSL before proceeding on course.

NOTE: **Rwy 18**, utility pole, 330' from departure end of runway, 325' right of centerline, 19' AGL/839' MSL. Trees beginning 802' from departure end of runway, 175' left of centerline, up to 100' AGL/919' MSL. Trees beginning 921' from departure end of runway, on centerline, up to 100' AGL/929' MSL. **Rwy 36**, navigation light top 15' from departure end of runway, 35' right of centerline, 2' AGL/833' MSL. Navigation light top 16' from departure end of runway, 60' left of centerline, 3' AGL/834' MSL. Silo top 855' from departure end of runway, 414' left of centerline, up to 33' AGL/864' MSL. Trees beginning 967' from departure end of runway, 611' left of centerline, up to 60' AGL/891' MSL.

PULASKI, WI

CARTER (92C)

ORIG 11013 (FAA)

TAKE-OFF MINIMUMS: **Rwy 12**, NA - Obstacles. **Rwys 3, 21**, NA - Environmental.

NOTE: **Rwy 30**, trees beginning 82' from DER, 147' left of centerline, up to 100' AGL/889' MSL. Trees beginning 66' from DER, 147' right of centerline, up to 100' AGL/889' MSL. Vehicle on road 66' from DER, left and right of centerline, 17' AGL/806' MSL.

12152

TAKE-OFF MINIMUMS AND (OBSTACLE) DEPARTURE PROCEDURES

TAKE-OFF MINIMUMS AND (OBSTACLE) DEPARTURE PROCEDURES

12152

QUINCY, IL

QUINCY RGNL-BALDWIN FIELD (UIN)
ORIG 07242 (FAA)

NOTE: **Rwy 4**, multiple trees beginning 1041' from departure end of runway, 707' right of centerline, up to 68' AGL/797' MSL. Tree 1128' from departure end of runway, 623' right of centerline, 43' AGL/775' MSL.

Rwy 18, multiple trees beginning 1720' from departure end of runway, 534' left of centerline, up to 100' AGL/849' MSL. **Rwy 22**, tree 586' from departure end of runway, 636' right of centerline, 67' AGL/796' MSL.

Rwy 36, multiple trees beginning 4' from departure end of runway, 165' right of centerline, up to 91' AGL/820' MSL.

RACINE, WI

JOHN H. BATTEN (RAC)
AMDT 5 10042 (FAA)

NOTE: **Rwy 32**, blast fence 18' from DER, 103' left of centerline 10' AGL/682' MSL. Vehicle on road 11' from DER, left and right of centerline, 15' AGL/688' MSL. Antennas beginning 143' from DER, 209' left of centerline up to 63' AGL/736' MSL. Obstruction light on pole 215' from DER, 116' right of centerline 25' AGL/698' MSL. Trees beginning 97' from DER, 66' left of centerline up to 72' AGL/748' MSL. Trees beginning 357' from DER, 292' right of centerline up to 59' AGL/732' MSL. **Rwy 14**, vehicle on road beginning 184' from DER, right and left of centerline, up to 15' AGL/672' MSL. Tree 19' from DER, 314' left of centerline, 55' AGL/702' MSL. Trees beginning 71' from DER, 2' right of centerline, up to 100' AGL/753' MSL. Obstruction light on light stand 361' from DER, 525' right of centerline, 60' AGL/717' MSL. Antenna 821' from DER, 375' left of centerline, 48' AGL/698' MSL. **Rwy 4**, railroad beginning 18' from DER, right and left of centerline, up to 23' AGL/676' MSL. Trees beginning 195' from DER, 124' left of centerline, up to 52' AGL/712' MSL. Vehicle on road beginning 159' from DER left and right of centerline up to 15' AGL/675' MSL. Trees beginning 64' from DER, 96' right of centerline up to 65' AGL/711' MSL. Poles beginning 220' from DER, 309' left of centerline, up to 45' AGL/695' MSL. Pole 688' from DER, 419' right of centerline, 53' AGL/697' MSL. **Rwy 22**, vehicle on road, 26' from DER, right and left of centerline, 15' AGL/691' MSL. Light standard, 35' from DER, 426' left of centerline, 21' AGL/694' MSL. Trees beginning 252' from DER, 168' left of centerline, up to 86' AGL/713' MSL. Trees beginning 205' from DER, 37' right of centerline, up to 87' AGL/763' MSL. Antenna 3842' from DER, 1213' right of centerline, 104' AGL/797'56 MSL.

RANTOUL, IL

RANTOUL NATL AVN CNTR-FRANK ELLIOTT
FLD (TIP)

AMDT 1 11349 (FAA)

NOTE: **Rwy 9**, trees beginning 1994' from DER, 28' right of centerline, up to 100' AGL/829' MSL. **Rwy 18**, trees beginning 1285' from DER, 12' left of centerline, up to 100' AGL/839' MSL. **Rwy 27**, trees beginning 2651' from DER, 15' right of centerline, up to 100' AGL/839' MSL. **Rwy 36**, trees beginning 1313' from DER, 5' right of centerline, up to 100' AGL/839' MSL. Tower 4949' from DER, 1784' right of centerline, 139' AGL/874' MSL.

REEDSBURG, WI

REEDSBURG MUNI (C35)
AMDT 2 12096 (FAA)

TAKE-OFF MINIMUMS: **Rwys 7, 25**, NA-obstacles. **Rwy 18**, std. w/min. climb of 505' per NM to 1400 or 400-1¼ w/min. climb of 215' per NM to 2000 or 800-2½, for climb in visual conditions. **Rwy 36**, 400-2 or std. w/min. climb of 300' per NM to 1400.

DEPARTURE PROCEDURE: **Rwy 18**, for climb in visual conditions: cross Reedsburg Muni Airport at or above 1600 MSL before proceeding on course. When executing VCOA, notify ATC prior to departure.

NOTE: **Rwy 18**, trees beginning 22' from DER, 6' right of centerline, up to 88' AGL/1031' MSL. Train and railroad tracks 99' from DER, right to left of centerline, 23' AGL/900' MSL. Terrain beginning 286' from DER, 83' right of centerline, 1033' MSL. Vehicles on road 571' from DER, right to left of centerline, 15' AGL/1033' MSL. T-L tower 3633' from DER, right to left of centerline, up to 80' AGL/1009' MSL. Trees beginning 27' from DER, 6' left of centerline, up to 89' AGL/1032' MSL. Pole 3842' from DER, 39' left of centerline, up to 76' AGL/997' MSL. Terrain beginning 5518' from DER, 14' left of centerline, 1033' MSL. **Rwy 36**, vertical structures beginning 23' from DER, 62' right and left of centerline, up to 21' AGL/942' MSL. Vehicle on road 44' from DER, left to right of centerline, 15' AGL/962' MSL. Buildings beginning 79' from DER, 5' right of centerline, up to 29' AGL/1050' MSL. Trees beginning 100' from DER, 12' right of centerline, up to 40' AGL/1041' MSL. Fences beginning 121' from DER, right and left of centerline, up to 24' AGL/925' MSL. Signs beginning 196' from DER, left and right of centerline, up to 38' AGL/939' MSL. Parking lot 198' from DER, 295' right of centerline, 13' AGL/914' MSL. Poles beginning 204' from DER, right and left of centerline, up to 102' AGL/1043' MSL. Light support structures beginning 291' from DER, left and right of centerline, up to 44' AGL/945' MSL. Buildings beginning 328' from DER, 107' left of centerline, up to 55' AGL/976' MSL. Terrain beginning 397' from DER, 176' right of centerline, up to 915' MSL. Flag poles 825' from DER, 158' left of centerline, up to 37' AGL/978' MSL. Trees beginning 1032' from DER, 28' left of centerline, up to 40' AGL/1041' MSL.

RHINELANDER, WI

RHINELANDER-ONEIDA COUNTY (RHI)
AMDT 4 10098 (FAA)

TAKE-OFF MINIMUMS: **Rwy 9**, std. w/min. climb of 230' per NM to 3900 before turning, or 900-2½ for climb in visual conditions.

DEPARTURE PROCEDURE: **Rwy 9**, for climb in visual conditions: cross Rhineland-Oneida County airport at or above 2400 before proceeding on course.

NOTE: **Rwy 9**, tree 3101' from DER, 1084' right of centerline, 61' AGL/1686' MSL. Tree 3117' from DER, 1194' left of centerline, 67' AGL/1685' MSL. **Rwy 15**, multiple trees beginning 624' from DER, 283' right of centerline, up to 63' AGL/1684' MSL. Multiple trees beginning 663' from DER, 376' left of centerline, up to 52' AGL/1660' MSL. Fence beginning 62' from DER, 482' left of centerline, up to 13' AGL/1625' MSL. Pole 729' from DER, 449' right of centerline, 22' AGL/1634' MSL. **Rwy 33**, multiple trees beginning 890' from DER, 234' right of centerline, up to 98' AGL/1709' MSL. Multiple trees beginning 187' from DER, 106' left of centerline, up to 83' AGL/1678' MSL. Poles beginning 1755' from DER, 297' right of centerline, up to 80' AGL/1691' MSL. Poles beginning 866' from DER, 106' left of centerline, up to 74' AGL/1669' MSL.

31 MAY 2012 to 28 JUN 2012

31 MAY 2012 to 28 JUN 2012

12152

TAKE-OFF MINIMUMS AND (OBSTACLE) DEPARTURE PROCEDURES

TAKE-OFF MINIMUMS AND (OBSTACLE) DEPARTURE PROCEDURES

12152

RICE LAKE, WI

RICE LAKE RGNL-CARL'S FIELD (RPD)
ORIG 05132 (FAA)

TAKE-OFF MINIMUMS: **Rwy 1**, std. with a min. climb of 231' per NM to 2200, or 1200-3 for climb in visual conditions.

DEPARTURE PROCEDURE: **Rwy 1**, for climb in visual conditions: Cross Rice Lake Rgnl-Carl's Field at or above 2300. **Rwy 31**, climb via heading 310° to 1900 before turning left.

NOTE: **Rwy 13**, trees 1550' from departure end of

runway, 200' right of centerline, 67' AGL/1167' MSL.

Rwy 19, trees 2780' from departure end of runway, 200'

left of centerline, 73' AGL/1169' MSL. **Rwy 31**, trees

1480' from departure end of runway, 50' right of

centerline, 64' AGL/1156' MSL.

RICHLAND CENTER, WI

RICHLAND (93C)

AMDT 1A 07241 (FAA)

TAKE-OFF MINIMUMS: **Rwys 9,17, NA. Rwy 27**, 400-2 or std. with a min. climb of 491' per NM to 1300. **Rwy 35**, 300-1 or std. with a min. climb of 222' per NM to 1800.

ROBINSON, IL

CRAWFORD CO (RSV)

ORIG 08269 (FAA)

NOTE: **Rwy 9**, trees 2285' from departure end of runway,

474' right of centerline, 60' AGL/516' MSL. Trees 971'

from departure end of runway, 594' left of centerline, 58'

AGL/517' MSL. **Rwy 17**, tree 2493' from departure end

of runway, 521' right of centerline, 100' AGL/589' MSL.

Rwy 27, trees beginning at 178' from departure end of

runway, 358' right of centerline, up to 78' AGL/547'

MSL. Trees beginning at 2190' from departure end of

runway, 89' left of centerline, 98' AGL/567' MSL. **Rwy**

35, road with vehicle 693' from departure end of runway,

611' right of centerline, 15' AGL/474' MSL. Tree 1545'

from departure end of runway, 841' left of centerline,

100' AGL/554' MSL.

ROCHELLE, IL

ROCHELLE MUNI AIRPORT-KORITZ FIELD
(RPJ)

AMDT 3 03191 (FAA)

TAKE-OFF MINIMUMS: **Rwy 7**, 800-1 or std. with a min. climb of 433' per NM to 1800.

NOTE: **Rwy 7**, tower 3415' from departure end of runway,

1135' right of centerline, 120' AGL/924' MSL. Tower,

3.66 NM from departure end of runway, 2020' left of

centerline, 625' AGL/1463' MSL.

ST. JACOB, IL

ST LOUIS METRO-EAST/ SHAFER FIELD
(3K6)

ORIG 87155 (FAA)

TAKE-OFF MINIMUMS: **Rwy 13**, 300-1.

SALEM, IL

SALEM-LECKRONE (SLO)

AMDT 6 01193 (FAA)

TAKE-OFF MINIMUMS: **Rwy 18**, 300-2 or std. with a min. climb of 280' per NM to 900.

SAVANNA, IL

TRI-TOWNSHIP (SFY)

ORIG 12152 (FAA)

TAKE-OFF MINIMUMS: **Rwy 13**, 300-2½ or std. w/min. climb of 203' per NM to 1100.

NOTE: **Rwy 13**, trees beginning 98' from DER, left and

right of centerline, up to 100' AGL/638' MSL. Vehicles

on roads beginning 20' from DER, left and right of

centerline, up to 17' AGL/629' MSL. AG equipment

beginning 688' from DER, 225' left of centerline, up to

21' AGL/633' MSL. Terrain beginning 62' from DER,

left and right of centerline, up to 630' MSL. **Rwy 31**,

trees beginning 133' from DER, left and right of

centerline, up to 100' AGL/689' MSL. Vehicles on roads

beginning 8' from DER, left and right of centerline 15'

AGL/627' MSL. RR 536' from DER, 339' left of

centerline, up to 17' AGL/627' MSL.

SHAWANO, WI

SHAWANO MUNI (EZS)

AMDT 2 07242 (FAA)

TAKE-OFF MINIMUMS: **Rwy 11**, 600-3 or std. w/min.

climb of 329' per NM to 1600. **Rwy 17**, 300-2 or std. w/

min. climb of 245' per NM to 1200. **Rwy 29**, 300-1½ or

std. w/min. climb of 248' per NM to 1100.

NOTE: **Rwy 11**, tower 2.3 NM from departure end of

runway, 3006' right of centerline, 222' AGL/1240' MSL.

Multiple trees beginning 1700' from departure end of

runway, 389' left to 2432' right of centerline, up to 100'

AGL/1149' MSL. **Rwy 17**, multiple trees beginning 1710'

from departure end of runway, 2951' left to 1292' right of

centerline, up to 100' AGL/1059' MSL. Elevator 5839'

from departure end of runway, 738' right of centerline, 149'

AGL/979' MSL. **Rwy 29**, multiple trees beginning 649'

from departure end of runway, 1052' left to 1117' right of

centerline, up to 100' AGL/929' MSL. Vehicle on road

538' from departure end of runway, crossing left to right

17' AGL/826' MSL. Water tank 1.1 NM from departure

end of runway, 1310' right of centerline, 175' AGL/1019'

MSL. **Rwy 35**, ships 1007' from departure end of runway,

left to right of centerline, up to 60' AGL/869' MSL. Vehicle

on road 580' from departure end of runway, left to right of

centerline, up to 15' AGL/824' MSL. Multiple trees

beginning 2200' from departure end of runway, 724' left of

centerline, up to 100' AGL/909' MSL.

SHEBOYGAN, WI

SHEBOYGAN COUNTY MEMORIAL (SBM)

AMDT 1 09351 (FAA)

NOTE: **Rwy 13**, vehicle on road 744' from DER, west to

east, 15' AGL/764' MSL. Trees beginning 302' from DER,

105' left of centerline, up to 56' AGL/796' MSL. **Rwy 21**,

vehicle on road 143' from DER, east to northwest, 15'

AGL/774' MSL. Tree 230' from DER, 377' right of

centerline, 27' AGL/767' MSL. Trees 1475' from DER,

291' right of centerline, 92' AGL/792' MSL. Tower 5414'

from DER, 1625' right of centerline, 133' AGL/883' MSL.

Obstruction light on localizer, 157' from DER, 4' left of

centerline, 11' AGL/750' MSL. Trees 1709' from DER, 35'

left of centerline, 83' AGL/794' MSL. **Rwy 31**, pole 405'

from DER, 40' right of centerline, 27' AGL/777' MSL.

Trees 70' from DER, 352' right of centerline, 56' AGL/

806' MSL. Trees 1345' from DER, 482' right of centerline,

76' AGL/826' MSL. Trees 2227' from DER, 17' right of

centerline, 71' AGL/821' MSL. Trees 1604' from DER, 32'

left of centerline, 92' AGL/842' MSL. Tower 4606' from

DER, 920' left of centerline, 139' AGL/889' MSL.

31 MAY 2012 to 28 JUN 2012

31 MAY 2012 to 28 JUN 2012

TAKE-OFF MINIMUMS AND (OBSTACLE) DEPARTURE PROCEDURES

12152

SHELBYVILLE, IL

SHELBY COUNTY (2H0)

ORIG 10154 (FAA)

TAKE-OFF MINIMUMS: **Rwys 4, 22, 14, 32**, NA-Environmental.

NOTE: **Rwy 18**, vehicle on roadway 529' from DER, left and right of centerline, 15' AGL/634' MSL. Building 716' from DER, 561' left of centerline, 25' AGL/644' MSL. Trees 1755' from DER, left and right of centerline, up to 100' AGL/709' MSL. **Rwy 36**, vehicle on roadway 665' from DER, left and right of centerline, 15' AGL/644' MSL. Trees beginning 835' from DER, 653' right of centerline, up to 100' AGL/709' MSL. Trees beginning 1500' from DER, 819' left of centerline, up to 100' AGL/709' MSL.

SHELL LAKE, WI

SHELL LAKE MUNI (SSQ)

ORIG 08045 (FAA)

TAKE-OFF MINIMUMS: **Rwy 14**, 200-1¼ or std. w/ min climb of 238' per NM to 1500, or alternatively with standard takeoff minimums and a normal 200'/NM climb gradient, takeoff must occur no later than 2000' prior to departure end of runway. **Rwy 32**, 200-1 ¼ or std. w/ min climb of 235' per NM to 1500, or alternatively with standard takeoff minimums and normal 200'/NM climb gradient, takeoff must occur no later than 2000' prior to departure end of runway.

NOTE: **Rwy 14**, Vehicle and road 91' from departure end of runway, 167' left of centerline, up to 15' AGL/1244' MSL. Trees beginning 147' from departure end of runway, 89' right of centerline up to 100' AGL/1409' MSL. Vehicle and road 218' from departure end of runway, 144' right of centerline, up to 15' AGL/1244' MSL. Trees beginning 358' from departure end of runway, 306' left of centerline up to 100' AGL/1329' MSL. **Rwy 32**, vehicle and road 84' from departure end of runway, 3' left of centerline, up to 15' AGL/1264' MSL. Railroad 347' from departure end of runway, 56' left of centerline, up to 23' AGL/1272' MSL. Vehicle and road 745' from departure end of runway 30' right of centerline, up to 15' AGL/1274' MSL. Railroad 827' from departure end runway, 686' right of centerline, up to 23' AGL/1272' MSL. Trees 2467' from departure end of runway, 853' right of centerline, up to 100' AGL/1349' MSL. Trees 2645' from departure end of runway, 100' left of centerline, up to 100' AGL/1419' MSL.

SOLON SPRINGS, WI

SOLON SPRINGS MUNI (OLG)

ORIG 11293 (FAA)

NOTE: **Rwy 1**, building 37' from DER, 509' right of centerline, 19' AGL/1119' MSL. Trees beginning 55' from DER, 329' left of centerline, up to 49' AGL/1149' MSL. Vehicles on roadway left and right of centerline beginning 77' from DER, up to 15' AGL/1114' MSL. Poles beginning 785' from DER, 526' right of centerline, up to 43' AGL/1143' MSL. Trees beginning 1140' from DER, 277' right of centerline, up to 48' AGL/1148' MSL. Trees left and right of centerline beginning 1474' from DER, up to 61' AGL/1161' MSL. **Rwy 19**, structure 12' from DER, 20' left of centerline, 3' AGL/1104' MSL. Vehicles on roadway beginning 20' from DER, 248' right of centerline, up to 15' AGL/1116' MSL. Terrain 40' from DER, 109' right of centerline, 1104' MSL. Trees beginning 45' from DER, 307' right of centerline, up to 40' AGL/1141' MSL. Trees beginning 74' from DER, 319' left of centerline, up to 75' AGL/1176' MSL. Trees left and right of centerline beginning 1027' from DER, up to 54' AGL/1155' MSL. Transmission line beginning 2455' from DER, 740' right of centerline, up to 123' AGL/1224' MSL. Trees beginning 2539' from DER, 631' left of centerline, up to 85' AGL/1186' MSL.

SPARTA, IL

SPARTA COMMUNITY-HUNTER FIELD (SAR)

ORIG 04106 (FAA)

TAKE-OFF MINIMUMS: **Rwy 18**, 300-1.

SPARTA, WI

SPARTA/FORT MC COY (CMY)

AMDT 2 11181 (FAA)

TAKE-OFF MINIMUMS: **Rwy 1**, 400-1%. **Rwy 19**, 500-2¼ w/ min. climb of 217' per NM to 1800 or std. w/ min. climb of 425' per NM to 1500, or 1100-2%, for climb in visual conditions...

DEPARTURE PROCEDURE: **Rwy 1**, climb heading 030° to 1600 before turning on course. **Rwy 11**, climb heading 112° to 1800 before turning on course. **Rwy 19**, climb heading 195° to 1500 before turning on course. **Rwy 29**, climb heading 287° to 1500 before turning on course. For climb in visual conditions. Cross Sparta/Fort Mc Coy airport at or above 1800' MSL before proceeding on course.

NOTE: **Rwy 1**, rising terrain beginning 14' from DER, left and right of centerline, up to 1019' MSL. Trees beginning 73' from DER, left and right of centerline, up to 100' AGL/1119' MSL. Vehicles on road beginning 1437' from DER, left and right of centerline, up to 15' AGL/874' MSL. **Rwy 11**, Obstruction light on pole 759' from DER, 232' left of centerline, 26' AGL/854' MSL. Trees beginning 989' from DER, left and right of centerline, up to 100' AGL/949' MSL.

Rwy 19, trees beginning 99' from DER, left and right of centerline, up to 100' AGL/1239' MSL. Ridge 8695' from DER, 2008' left of centerline, 0' AGL/1122' MSL. **Rwy 29**, trees beginning 802' from DER, 31' left of centerline, up to 61' AGL/879' MSL. Pole 1447' from DER, 432' right of centerline, 50' AGL/866' MSL.

31 MAY 2012 to 28 JUN 2012

31 MAY 2012 to 28 JUN 2012

12152

TAKE-OFF MINIMUMS AND (OBSTACLE) DEPARTURE PROCEDURES

TAKE-OFF MINIMUMS AND (OBSTACLE) DEPARTURE PROCEDURES

12152

SPRINGFIELD, IL

ABRAHAM LINCOLN CAPITAL (SPI)
ORIG 05300 (FAA)

NOTE: **Rwy 4**, multiple trees beginning 1456' from departure end of runway, 734' left of centerline, up to 59' AGL/650' MSL. **Rwy 13**, bush 342' from departure end of runway, 299' right of centerline, 43' AGL/592' MSL. **Rwy 18**, tower 1702' from departure end of runway, 778' right of centerline, 100' AGL/659' MSL. Multiple trees beginning 1503' from departure end of runway, 283' right of centerline, up to 98' AGL/660' MSL. Building 2.53 NM from departure end of runway, 1.2 NM left of centerline, 405' AGL/1000' MSL. **Rwy 31**, multiple trees beginning 1641' from departure end of runway, 619' left of centerline, up to 81' AGL/665' MSL. **Rwy 36**, multiple trees beginning 1873' from departure end of runway, 470' left of centerline, up to 79' AGL/670' MSL. Rod on tower 2397' from departure end of runway, 501' right of centerline, 55' AGL/653' MSL.

STERLING-ROCKFALLS, IL

WHITESIDE COUNTY-JOSEPH H. BITTORF
FIELD (SQI)
ORIG 08325 (FAA)

NOTE: **Rwy 7**, elevator 3095' from departure end of runway, 1099' right of centerline, 91' AGL/741' MSL. **Rwy 18**, vehicle on roadway 736' from departure end of runway, on centerline, 15' AGL/664' MSL. Tree 1012' from departure end of runway, 288' left of centerline, 35' AGL/680' MSL. Tree 787' from departure end of runway, 120' right of centerline, 29' AGL/669' MSL. Multiple trees beginning 3619' from departure end of runway, 944' left of centerline, up to 100' AGL/769' MSL. **Rwy 25**, multiple trees beginning 1308' from departure end of runway, 22' left of centerline, up to 82' AGL/732' MSL. Multiple trees beginning 666' from departure end of runway, 42' right of centerline, up to 80' AGL/720' MSL. **Rwy 36**, vehicle on roadway, 575' from departure end of runway, on centerline, 17' AGL/668' MSL. Tree 564' from departure end of runway, 103' right of centerline, 11' AGL/662' MSL.

STEVENS POINT, WI

STEVENS POINT MUNI (STE)
ORIG 09015 (FAA)

NOTE: **Rwy 3**, trees beginning 1175' from departure end of runway, 649' left of centerline, 54' AGL/1173' MSL. Tree 2693' from departure end of runway, 556' right of centerline, 62' AGL/1181' MSL. **Rwy 21**, trees beginning 1127' from departure end of runway, 119' right of centerline, up to 100' AGL/1209' MSL. Trees beginning 1247' from departure end of runway, 151' left of centerline, up to 45' AGL/1153' MSL. **Rwy 12**, poles beginning 177' from departure end of runway, 197' right of centerline, up to 37' AGL/1126' MSL. Trees beginning 757' from departure end of runway, 27' right of centerline, up to 95' AGL/1204' MSL. Trees beginning 958' from departure end of runway, 112' left of centerline, up to 87' AGL/1196' MSL. **Rwy 30**, building 217' from departure end of runway, 535' left of centerline, 30' AGL/1139' MSL. Vehicle and road 499' from departure end of runway, on centerline, 15' AGL/1124' MSL. Trees beginning 848' from departure end of runway, 66' left of centerline, up to 87' AGL/1206' MSL. Trees beginning 869' from departure end of runway, 139' right of centerline, up to 81' AGL/1210' MSL.

STURGEONBAY, WI

DOOR COUNTY CHERRYLAND (SUE)
ORIG 07242 (FAA)

DEPARTURE PROCEDURE: **Rwy 2**, climb heading 016° to 1700 before turning east.

NOTE: **Rwy 2**, 100' tree 1.4 NM from departure end of runway, 2674' left of centerline, 100' AGL/839' MSL. **Rwy 10**, 130' boat 5128' from departure end of runway, on centerline, 130' AGL/710' MSL. **Rwy 20**, multiple trees, antennas, vehicle on road, poles beginning 121' from departure end of runway, 374' right of centerline, 90' AGL/802' MSL. Multiple poles and trees beginning 320' from departure end of runway, 250' left of centerline, 81' AGL/797' MSL. **Rwy 28**, vehicle on road 355' from departure end of runway, on centerline, 15' AGL/734' MSL.

SUPERIOR, WI

RICHARD I. BONG (SUW)
AMDT 5 98281 (FAA)

DEPARTURE PROCEDURE: **Rwy 3**, climb runway heading to 2500 before turning west. **Rwy 31**, climb runway heading to 2500 before turning north.

TAYLORVILLE, IL

TAYLORVILLE MUNI (TAZ)
ORIG 05300 (FAA)

TAKE-OFF MINIMUMS: **Rwys 9, 27**, NA-no survey data.

NOTE: **Rwy 18**, numerous trees 1000' from departure end of runway, from 335' left of centerline to 1150' right of centerline, up to 100' AGL/719' MSL. **Rwy 36**, numerous trees 1580' from departure end of runway, from 20' left of centerline to 570' right of centerline, up to 100' AGL/724' MSL.

TOMAHAWK, WI

TOMAHAWK RGNL (TKV)
AMDT1 12152 (FAA)

NOTE: **Rwy 9**, vehicles on road 160' from DER, right and left of runway, up to 15' AGL/1494' MSL. Trees beginning 2' from DER, right and left of runway, up to 100' AGL/1599' MSL. **Rwy 27**, obstruction light on windsock 10' from DER, 400' left of centerline, 25' AGL/1496' MSL. Vehicle on road 11' from DER, right and left of runway, 15' AGL/1479' MSL. Trees beginning 40' from DER, right and left of centerline, up to 100' AGL/1599' MSL.

VANDALIA, IL

VANDALIA MUNI (VLA)
ORIG 12152 (FAA)

NOTE: **Rwy 9**, trees 2563' from DER, 140' right of centerline, 100' AGL/649' MSL. Trees 3364' from DER, 740' left of centerline, 100' AGL/644' MSL. **Rwy 18**, trees 764' from DER, 519' right of centerline, 100' AGL/629' MSL. Trees beginning 3115' from DER, 293' left of centerline, 100' AGL/659' MSL. **Rwy 27**, trees beginning 1581' from DER, 885' right of centerline, 100' AGL/659' MSL. Trees beginning 2548' from DER, 4' to 1230' left of centerline, 100' AGL/649' MSL. **Rwy 36**, trees beginning 256' from DER, 327' to 882' right of centerline, 100' AGL/659' MSL. Trees beginning 1834' from DER, 288' to 1548' left of centerline, 100' AGL/649' MSL.

31 MAY 2012 to 28 JUN 2012

31 MAY 2012 to 28 JUN 2012

12152

TAKE-OFF MINIMUMS AND (OBSTACLE) DEPARTURE PROCEDURES

TAKE-OFF MINIMUMS AND (OBSTACLE) DEPARTURE PROCEDURES

12152

VIROQUA, WI

VIROQUA MUNI (Y51)
ORIG-A 07298 (FAA)

TAKE-OFF MINIMUMS: **Rwy 2, 20**, NA-unsurveyed turf runways. **Rwy 11**, NA. Obstacle.

VOLK FIELD (KVOK)

CAMP DOUGLAS, WI. 07186

TAKE-OFF OBSTACLES: **Rwy 27**: Trees 80' AGL/1019' MSL, 2537' from DER, 983' right of centerline. Trees 80' AGL/1039' MSL, 3742' from DER, 835' left of centerline. **Rwy 9**: Antenna 50' AGL/1040' MSL, 4966' from DER, 625' left of centerline.

WATERTOWN, WI

WATERTOWN MUNI (RYV)

DEPARTURE PROCEDURE: **Rwy 5**, climb runway heading to 2500 before heading west. **Rwy 29**, climb runway heading to 2500 before turning north.

WAUKESHA, WI

WAUKESHA COUNTY (UES)

AMDT 6 09127(FAA)

TAKE-OFF MINIMUMS: **Rwy 10**, 400-2½ or std. with a min. climb of 316' per NM to 1400.

NOTE: **Rwy 10**, light pole 146' from DER, 326' left of centerline, 9' AGL/918' MSL. Light pole 560' from DER, 597' left of centerline, 17' AGL/936' MSL. Pipe on building 229' from DER, 275' left of centerline, 16' AGL/925' MSL. Trees beginning 1652' from DER, 171' right of centerline, up to 70' AGL/1029' MSL. Trees beginning 1868' from DER, 16' left of centerline, up to 54' AGL/983' MSL. Tower 1.0 NM from DER, 1571' right of centerline, 219' AGL/1148' MSL. Tower 1.1 NM from DER, 1140' right of centerline, 177' AGL/1126' MSL. Tower 1.8 NM from DER, 3455' right of centerline, 272' AGL/1238' MSL. **Rwy 18**, vehicle on road 618' from DER, 162' left of centerline, 15' AGL/946' MSL. Bush 746' from DER, 107' right of centerline, 9' AGL/938' MSL. Trees beginning 753' from DER, 187' right of centerline, up to 18' AGL/957' MSL. Tree 757' from DER, 182' left of centerline, 17' AGL/946' MSL. Tree 1188' from DER, 27' left of centerline, 27' AGL/956' MSL. Pole 1976' from DER, 304' left of centerline, 48' AGL/967' MSL. Pole 2026' from DER, 196' right of centerline, 62' AGL/981' MSL. Tower 2010' from DER, 932' left of centerline, 66' AGL/984' MSL. Rod on stack 4489' from DER, 657' left of centerline, 118' AGL/1037' MSL. **Rwy 28**, vehicle on road 877' from DER, 541' left of centerline, 15' AGL/924' MSL. Pole 1078' from DER, 739' left of centerline, 47' AGL/936' MSL. **Rwy 36**, rod on pole 401' from DER, 555' left of centerline, 46' AGL/945' MSL. Vehicle on road 300' from DER, 349' right of centerline, 15' AGL/914' MSL. Trees beginning 486' from DER, 175' right of centerline, up to 81' AGL/970' MSL. Trees beginning 999' from DER, 124' left of centerline, up to 72' AGL/962' MSL.

WAUPACA, WI

WAUPACA MUNI (PCZ)
AMDT 2 05020 (FAA)

TAKE-OFF MINIMUMS: **Rwy 28**, 300-2 or std with a min. climb of 317' per NM to 1300.

NOTES: **Rwy 10**, trees 1400' from departure end of runway, 300' left of centerline, 41' AGL/850' MSL. **Rwy 13**, road and vehicle 240' from departure end of runway, 275' right of centerline, 29' AGL/832' MSL. **Rwy 28**, trees 1.1 NM from departure end of runway, 1848' left of centerline, 100' AGL, 1119' MSL. **Rwy 31**, trees 800' from departure end of runway, 150' left of centerline, 19' AGL/846' MSL. Trees 1965' from departure end of runway, 585' left of centerline, 100' AGL/979' MSL.

WAUSAU, WI

WAUSAU DOWNTOWN (AUW)
AMDT 5 10322 (FAA)

TAKE-OFF MINIMUMS: **Rwy 4**, 400-2½ or std. w/min. climb of 378' per NM to 1700. **Rwy 22**, 700-3 or std. w/min. climb of 362' per NM to 2100.

DEPARTURE PROCEDURE: **Rwy 4**, climb heading 043° to 2100 before proceeding on course. **Rwy 12**, climb heading 123° to 2200 before proceeding on course. **Rwy 22**, climb heading 223° to 2800 before proceeding on course. **Rwy 30**, climb heading 303° to 2800 before proceeding on course.

NOTE: **Rwy 4**, trees beginning 885' from DER, 398' right of centerline, up to 100' AGL/1269' MSL. Rising terrain and trees beginning 4550' from DER, from right to left of centerline, up to 100' AGL/1529' MSL. **Rwy 12**, trees and boats with masts beginning 147' from DER, 320' right of centerline, up to 100' AGL/1289' MSL. Trees beginning 400' from DER, 341' left of centerline, up to 100' AGL/1279' MSL. Trees beginning 1214' from DER, on centerline, up to 100' AGL/1289' MSL. **Rwy 22**, trees and boats with masts beginning 256' from DER, from left to right of centerline, up to 100' AGL/1289' MSL. Trees beginning 2050' from DER, 730' right of centerline, up to 100' AGL/1269' MSL. Rising terrain and trees beginning 2 NM from DER, 3400' left of centerline, up to 100' AGL/1709' MSL. Tower 2.3 NM from DER, 3952' left of centerline, 248' AGL/1840' MSL. **Rwy 30**, trees and boats with masts beginning at DER, 379' left of centerline to 558' from DER, on centerline, up to 100' AGL/1289' MSL. Trees and boats with masts beginning 94' from DER, 510' right of centerline, up to 100' AGL/1279' MSL. Trees beginning 2885' from DER, 1235' left of centerline, up to 100' AGL/1279' MSL.

WAUTOMA, WI

WAUTOMA MUNI (Y50)
ORIG 98225 (FAA)

DEPARTURE PROCEDURE: **Rwy 31**, climb runway heading to 1800 before turning north.

31 MAY 2012 to 28 JUN 2012

31 MAY 2012 to 28 JUN 2012

12152

TAKE-OFF MINIMUMS AND (OBSTACLE) DEPARTURE PROCEDURES

WEST BEND, WI

WEST BEND MUNI (ETB)

ORIG 10042 (FAA)

TAKE-OFF MINIMUMS: **Rwy 13**, 300-1½ or std. w/ a min. climb of 260' per NM to 1200. **Rwy 24**, 300-2 or std. w/ a min. climb of 250' per NM to 1400. **Rwy 31**, 300-1¼ or standard w/ a min. climb of 220' per NM to 1100.

NOTE: **Rwy 6**, vehicle on roads beginning 15' from DER, 251' left of centerline, up to 17' AGL/959' MSL. Trees beginning 85' from DER, 2' left of centerline, up to 100' AGL/1019' MSL. Trees beginning 47' from DER, 91' right of centerline, up to 100' AGL/886' MSL. **Rwy 13**, trees beginning 452' from DER, 127' left of centerline, up to 100' AGL/1109' MSL. Trees beginning 214' from DER, 179' right of centerline, up to 100' AGL/1049' MSL. **Rwy 24**, trees beginning 114' from DER, 74' left of centerline, up to 100' AGL/1029' MSL. Trees beginning 89' from DER, 120' right of centerline, up to 100' AGL/969' MSL. Tower 1.9 NM from DER, 2572' right of centerline, 196' AGL/1156' MSL. **Rwy 31**, vehicle on road 99' from DER, 492' left of centerline, 15' AGL/904' MSL. Trees beginning 550' from DER, 173' left of centerline, up to 100' AGL/1039' MSL. Vehicle on road 61' from DER, 498' right of centerline, 15' AGL/906' MSL. Trees beginning 832' from DER, 236' right of centerline, up to 100' AGL/1009' MSL.

WISCONSIN RAPIDS, WI

ALEXANDER FIELD SOUTH WOOD COUNTY (ISW)

AMDT 1 80234 (FAA)

TAKE-OFF MINIMUMS: **Rwy 20**, 300-1

31 MAY 2012 to 28 JUN 2012

31 MAY 2012 to 28 JUN 2012