

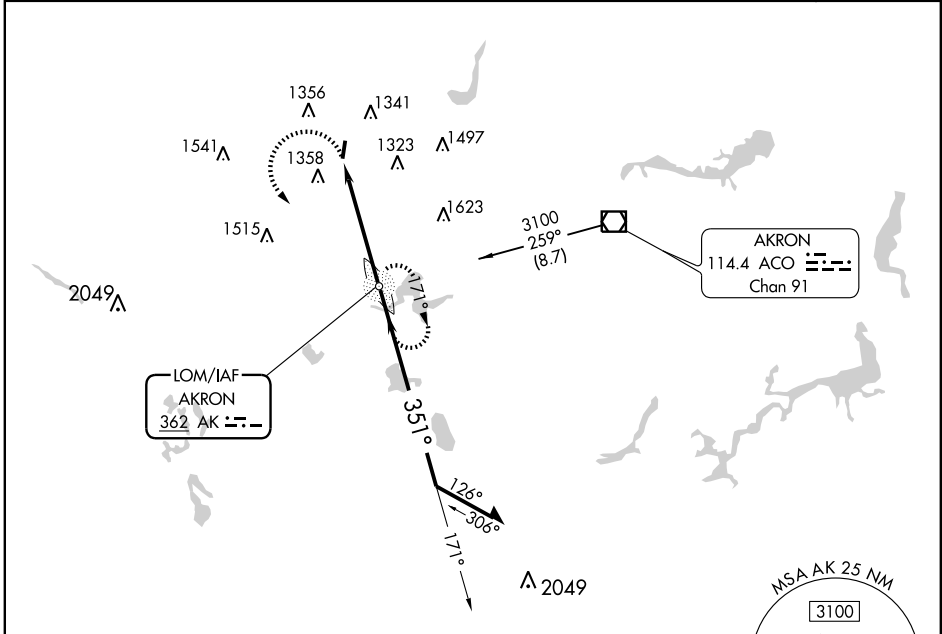
LOM AK	APP CRS	Rwy Idg	<b>3947</b>
<b>362</b>	<b>351°</b>	THRE	<b>1117</b>
		Apt Elev	<b>1134</b>

**NDB RWY 1**  
KENT STATE UNIVERSITY (1G3)

**▼** Use Akron Fulton altimeter setting; when not received, use Akron-Canton Rgnl altimeter setting and increase all MDA 20 feet. When VGSI inop, Straight-In/Circling  
**▲ NA** Rwy 1 procedure NA at night. Visibility reduction by helicopters NA.

**MISSED APPROACH:**  
Climbing left turn to 3100 direct AKRON LOM and hold.

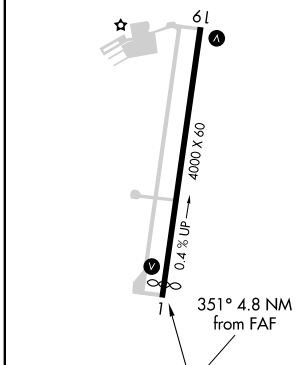
AKRON FULTON INTL ASOS <b>126.825</b>	AKRON-CANTON APP CON ★ <b>118.6 371.875</b>	CLNC DEL <b>125.65</b>	UNICOM <b>122.725 (CTAF)</b>	<b>122.9 0</b>
--	--	---------------------------	---------------------------------	----------------



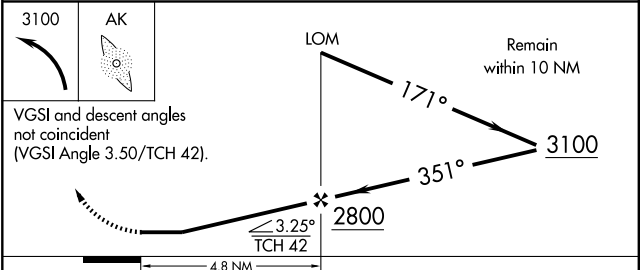
EC-2, 31 MAY 2012 to 28 JUN 2012

EC-2, 31 MAY 2012 to 28 JUN 2012

ELEV 1134	THRE 1117
-----------	-----------



FAF to MAP 4.8 NM					
Knots	60	90	120	150	180
Min:Sec	4:48	3:12	2:24	1:55	1:36



CATEGORY	A	B	C	D
S-1	1760-1	643 (700-1)	1760-1 <sup>7</sup> / <sub>8</sub> 643 (700-1 <sup>7</sup> / <sub>8</sub> )	NA
CIRCLING	1760-1	626 (700-1)	1760-1 <sup>7</sup> / <sub>8</sub> 626 (700-1 <sup>7</sup> / <sub>8</sub> )	NA

# RNAV (GPS) RWY 1

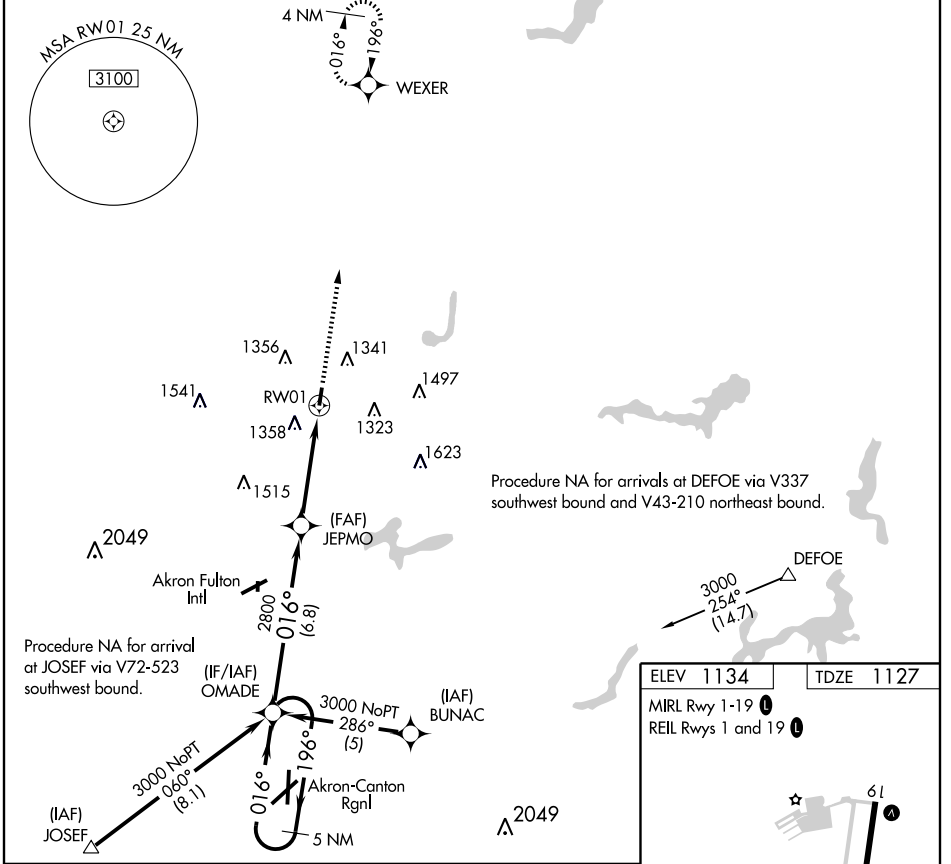
KENT STATE UNIVERSITY (1G3)

WAAS CH <b>61001</b> <b>W01A</b>	APP CRS <b>016°</b>	Rwy Idg <b>3947</b> TDZE <b>1127</b> Apt Elev <b>1134</b>
--	------------------------	---

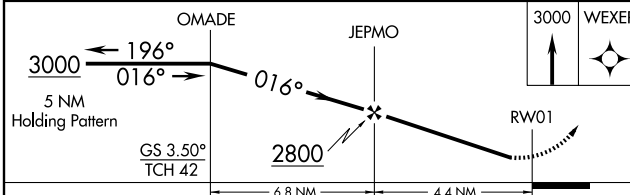
**⚠** DME/DME RNP-0.3 NA. Use Akron Fulton Intl altimeter setting; if not received use Akron-Canton Rgnl altimeter setting and increase all DAs/MDAs 20 feet. Visibility reduction by helicopters NA. Baro-VNAV NA.

**⚠** NA MISSED APPROACH: Climb to 3000 direct WEXER and hold.

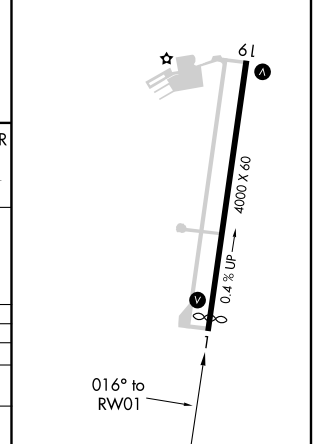
AKRON-CANTON APP CON *	CLNC DEL	UNICOM	
<b>118.6 371.875</b>	<b>125.65</b>	<b>122.725 (CTAF)</b>	<b>122.9</b>



ELEV 1134	TDZE 1127
MIRL Rwy 1-19	REIL Rwys 1 and 19



CATEGORY	A	B	C	D
LPV DA	1497-1¼	370 (400-1¼)		NA
LNVA MDA	1660-1	533 (600-1)	1660-1½ 533 (600-1½)	NA
CIRCLING	1760-1¼	626 (700-1¼)	1760-1¾ 626 (700-1¾)	NA



EC-2, 31 MAY 2012 to 28 JUN 2012

EC-2, 31 MAY 2012 to 28 JUN 2012

KENT, OHIO

AL-5397 (FAA)

WAAS CH <b>65701</b> W19A	APP CRS <b>196°</b>	Rwy Idg <b>4000</b> TDZE <b>1134</b> Apt Elev <b>1134</b>
---------------------------------	------------------------	---

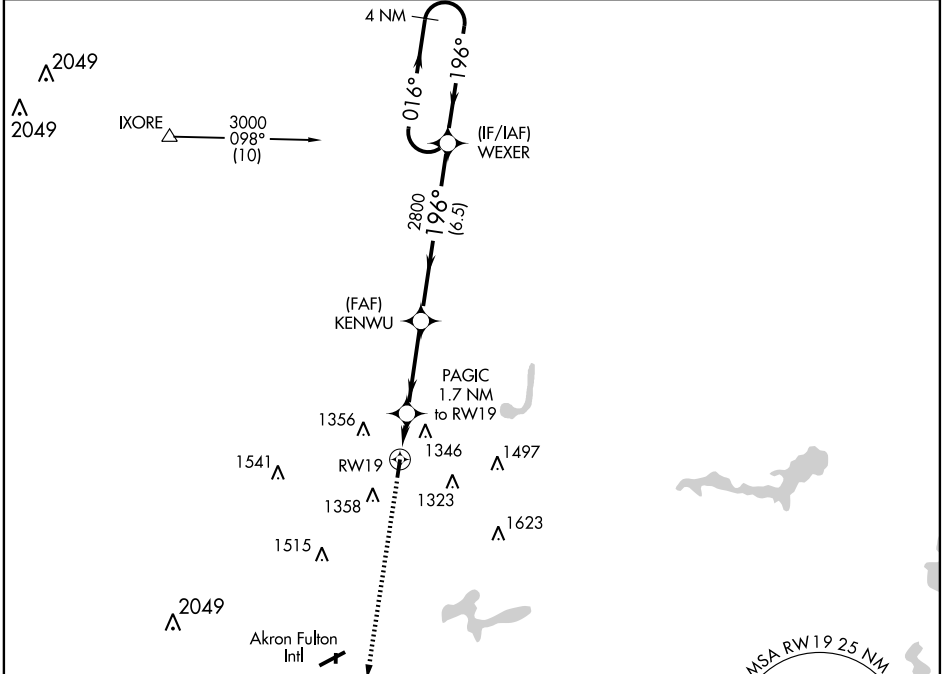
# RNAV (GPS) RWY 19

KENT STATE UNIVERSITY (1G3)

**⚠** DME/DME RNP-0.3 NA. Use Akron Fulton Intl altimeter setting; if not received use Akron-Canton Rgnl altimeter setting, and increase all DAs/MDAs 20 feet. Visibility reduction by helicopters NA. Baro-VNAV NA.

MISSED APPROACH: Climb to 3000 direct OMADE and hold.

AKRON-CANTON APP CON *	CLNC DEL	UNICOM	<b>122.9</b> <b>Ⓢ</b>
<b>118.6 371.875</b>	<b>125.65</b>	<b>122.725 (CTAF)</b>	



EC-2, 31 MAY 2012 to 28 JUN 2012

EC-2, 31 MAY 2012 to 28 JUN 2012

ELEV 1134	TDZE 1134	MISSD APCH FIX		
		<p>3000 OMADE VGS1 and RNAV glidepath not coincident (VGS1 Angle 3.00/TCH 35).</p> <p>*LNAV only RW19</p> <p>PACIG 1.7 NM to RW19</p> <p>KENWU</p> <p>WEXER 4 NM Holding Pattern</p> <p>1700* 2800 3000</p> <p>1.7 NM 3.3 NM 6.5 NM</p> <p>GS 3.00° TCH 40</p>		
CATEGORY	A	B	C	D
LPV DA	1443-1 309 (400-1)			NA
LNAV MDA	1580-1	446 (500-1)	1580-1¼ 446 (500-1¼)	NA
CIRCLING	1760-1	626 (700-1)	1760-1¾ 626 (700-1¾)	NA

KENT, OHIO  
Amdt 1A 12152

41°09'N - 81°25'W

# RNAV (GPS) RWY 19

VOR/DME ACO <b>114.4</b> Chan <b>91</b>	APP CRS <b>289°</b>	Rwy Idg TDZE Apt Elev <b>1134</b>	<b>N/A</b> <b>N/A</b> <b>1134</b>
---	------------------------	---	---

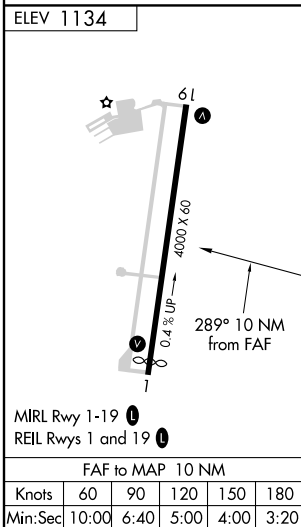
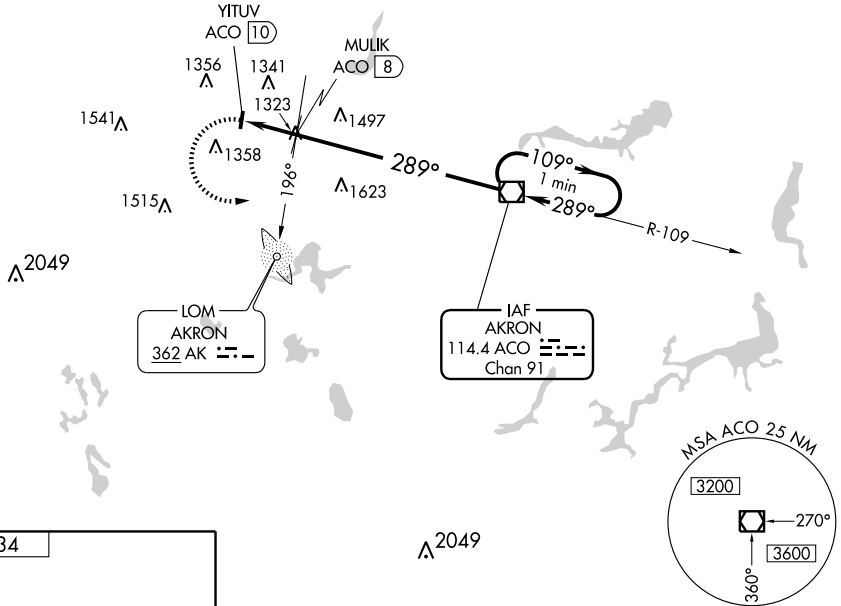
**VOR-A**

KENT STATE UNIVERSITY (1G3)

<p><b>▼</b> Use Akron Fulton altimeter setting; when not received, use Akron-Canton Rgnl altimeter setting.</p> <p><b>▲ NA</b></p>		<p>MISSED APPROACH: Climbing left turn to 3000 direct ACO VOR/DME and hold.</p>		
AKRON FULTON INTL ASOS <b>126.825</b>	AKRON-CANTON APP CON ★ <b>118.6 371.875</b>	CLNC DEL <b>125.65</b>	UNICOM <b>122.725</b> (CTAF)	<b>122.9</b> <b>0</b>

EC-2, 31 MAY 2012 to 28 JUN 2012

EC-2, 31 MAY 2012 to 28 JUN 2012



3000	ACO	One Minute Holding Pattern			
CATEGORY	A	B	C	D	
CIRCLING	2020-1¼	886 (900-1¼)	2020-2¾ 886 (900-2¾)	NA	
MULIK FIX MINIMUMS (ADF OR DME REQUIRED)					
CIRCLING	1760-1	626 (700-1)	1760-1¾ 626 (700-1¾)	NA	

**VOR-A**