

APP CRS 183°	Rwy Idg 2303
	TDZE N/A
	Apt Elev 696

RNAV (GPS)-B

CANTON-PLYMOUTH-METTETAL (1D2)

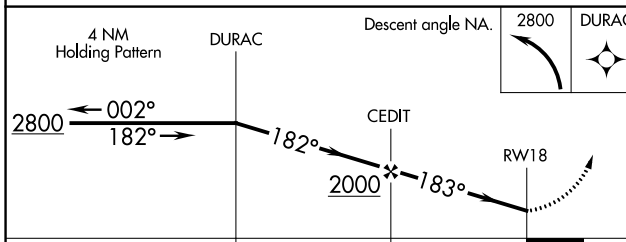
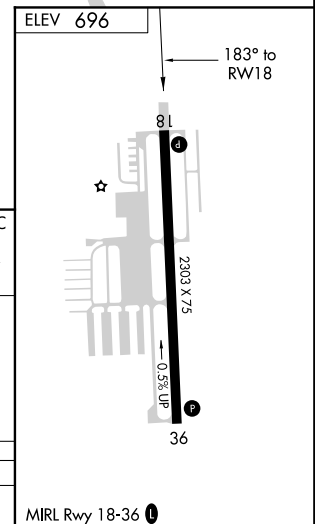
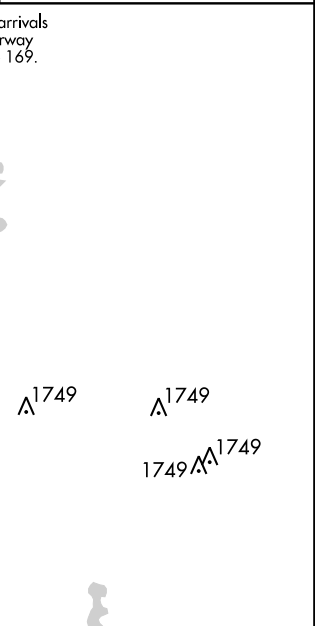
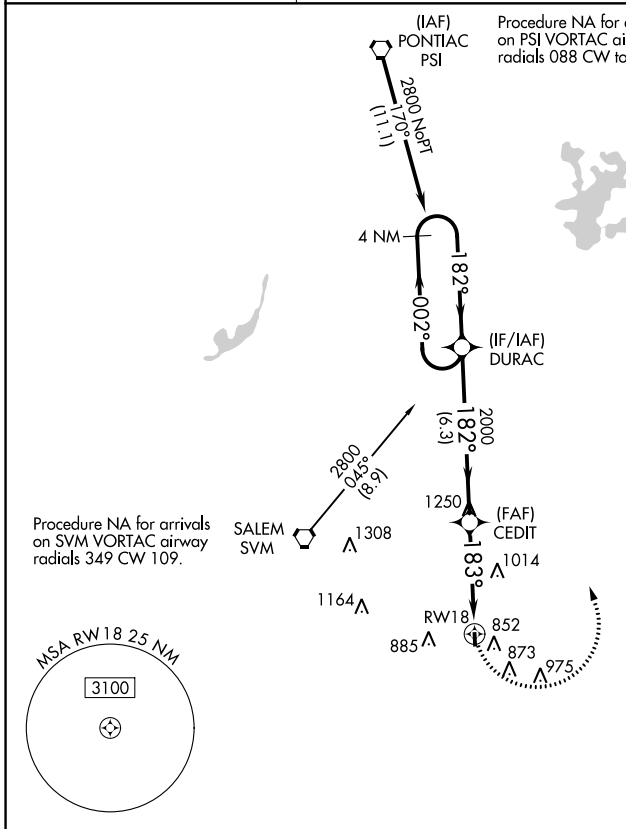
NA DME/DME RNP-0.3 NA. Procedure NA at night. Use Willow Run altimeter setting. Helicopter visibility reduction below 1 SM NA.

MISSED APPROACH:
Climbing left turn to 2800 direct DURAC and hold.

WILLOW RUN ASOS
132.35

DETROIT APP CON
118.95 363.2

UNICOM
122.7 (CTAF) **0**



CATEGORY	A	B	C	D
C CIRCLING	1300-1 604 (700-1)		NA	

EC-1, 14 SEP 2017 to 12 OCT 2017

EC-1, 14 SEP 2017 to 12 OCT 2017

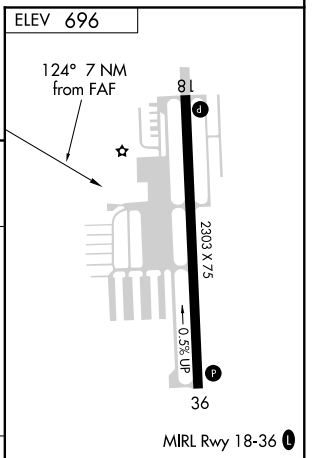
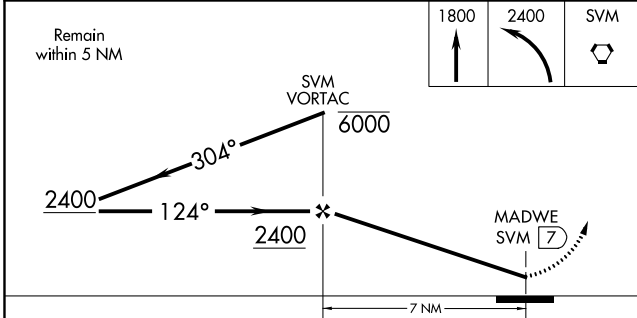
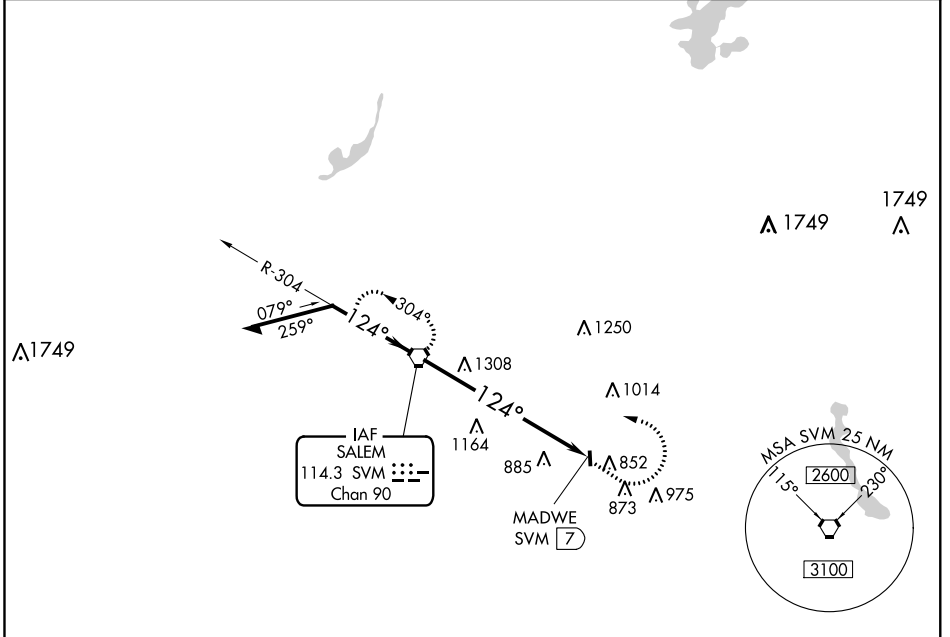
SVM VORTAC 114.3 Chan 90	APP CRS 124°	Rwy Idg TDZE Apt Elev N/A N/A 696
--	------------------------	---

VOR-A

CANTON-PLYMOUTH-METTETAL (1D2)

<p>NA</p> <p>Procedure NA at night. Use Willow Run altimeter setting, when not received, use Detroit Metropolitan Wayne County altimeter setting. Helicopter visibility reduction below 1 SM NA.</p>	<p>MISSED APPROACH: Climb to 1800 then climbing left turn to 2400 direct SVM VORTAC and hold.</p>
---	---

<p>WILLOW RUN ASOS 132.35</p>	<p>DETROIT APP CON 118.95 363.2</p>	<p>UNICOM 122.7 (CTAF) 0</p>
--	--	---



CATEGORY	A	B	C	D	FAF to MAP 7 NM					
CIRCLING	1640-1¼ 944 (1000-1¼)		NA		Knots	60	90	120	150	180
					Min:Sec	7:02	4:41	3:31	2:49	2:21

VOR-A

EC-1, 14 SEP 2017 to 12 OCT 2017

EC-1, 14 SEP 2017 to 12 OCT 2017