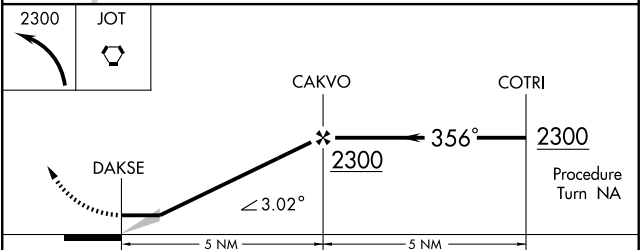
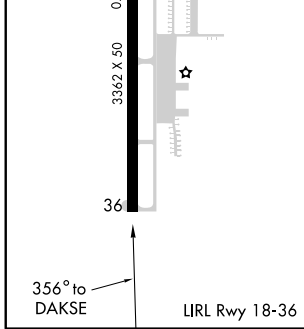
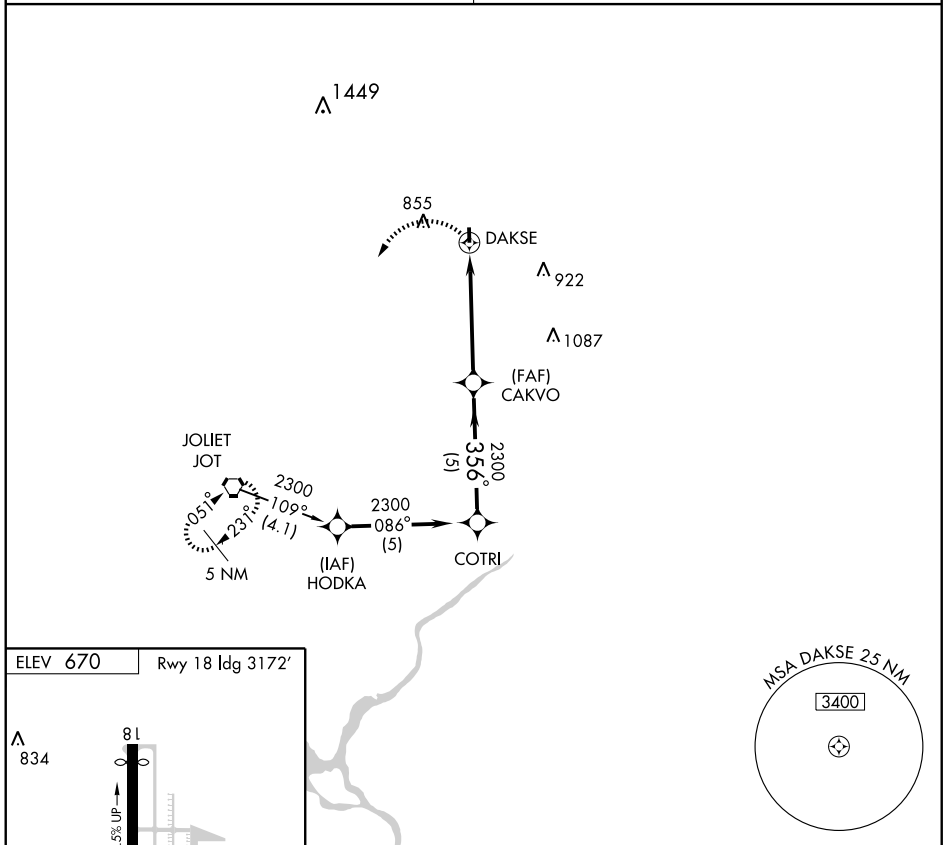


**RNAV (GPS)-B**  
BOLINGBROOK'S CLOW INTL (1C5)

APP CRS <b>356°</b>	Rwy Idg TDZE Apt Elev	<b>N/A</b> <b>N/A</b> <b>670</b>
------------------------	-----------------------------	--

<b>▲</b> NA Use Chicago/Romeoville altimeter setting.	MISSED APPROACH: Climbing left turn to 2300 direct JOT VORTAC and hold.
CHICAGO APP CON <b>119.35 388.0</b>	CTAF <b>122.9</b>



CATEGORY	A	B	C	D
CIRCLING	1220-1	550 (600-1)	NA	

EC-3, 19 NOV 2009 to 17 DEC 2009

EC-3, 19 NOV 2009 to 17 DEC 2009

BOLINGBROOK, ILLINOIS

AL-6535 (FAA)

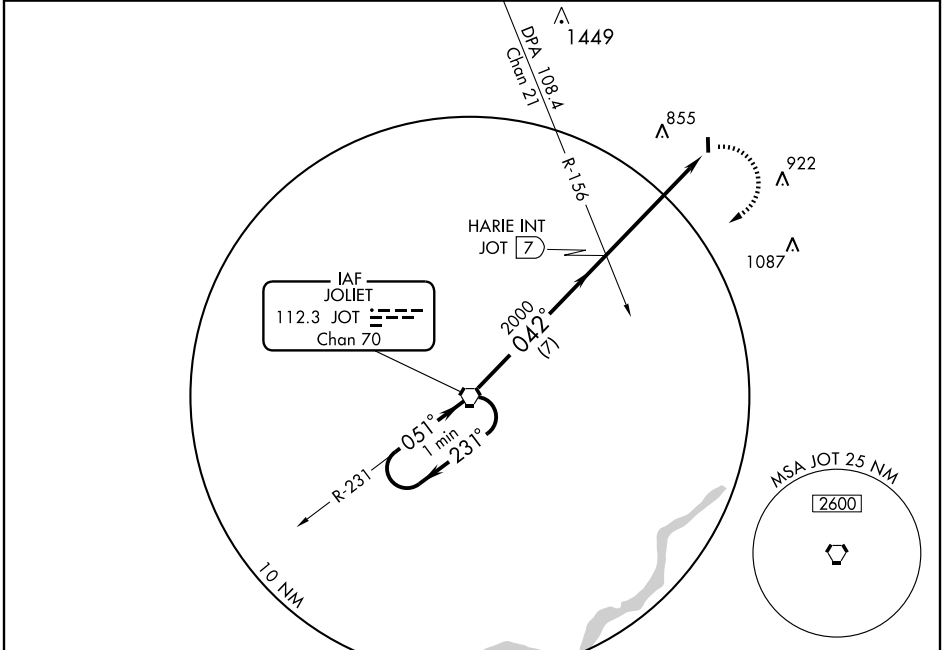
VOR-A

BOLINGBROOK'S CLOW INTL (1C5)

VORTAC JOT <b>112.3</b> Chan <b>70</b>	APP CRS <b>042°</b>	Rwy Idg TDZE Apt Elev	<b>N/A</b> <b>N/A</b> <b>670</b>
--	------------------------	-----------------------------	--

**▲ NA** Use Lewis University altimeter setting. MISSED APPROACH: Climbing right turn to 2200 direct JOT VORTAC and hold.

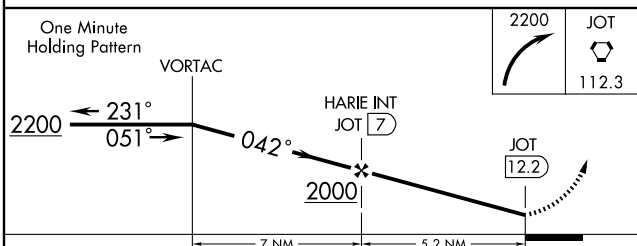
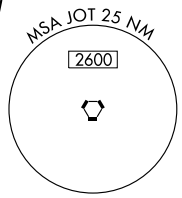
CHICAGO APP CON **119.35 388.0** CTAF **122.9**



EC-3, 19 NOV 2009 to 17 DEC 2009

EC-3, 19 NOV 2009 to 17 DEC 2009

NoPT for arrivals on JOT VORTAC  
Airway Radials 171 CW 261.



ELEV 670	Rwy 18 Idg 3172'
▲ 834	81
0.5% UP	3362 X 50
	36
	042° 5.2 NM from FAF
	LIRL Rwy 18-36
FAF to MAP 5.2 NM	
Knots	60 90 120 150 180
Min:Sec	5:12 3:28 2:36 2:05 1:44

CATEGORY	A	B	C	D
CIRCLING	1220-1	550 (600-1)		NA

BOLINGBROOK, ILLINOIS  
Orig 07298

41°42'N - 88°08'W

BOLINGBROOK'S CLOW INTL (1C5)

VOR-A