

BOLINGBROOK, ILLINOIS

AL-6535 (FAA)

VOR-A

BOLINGBROOK'S CLOW INTL (1C5)

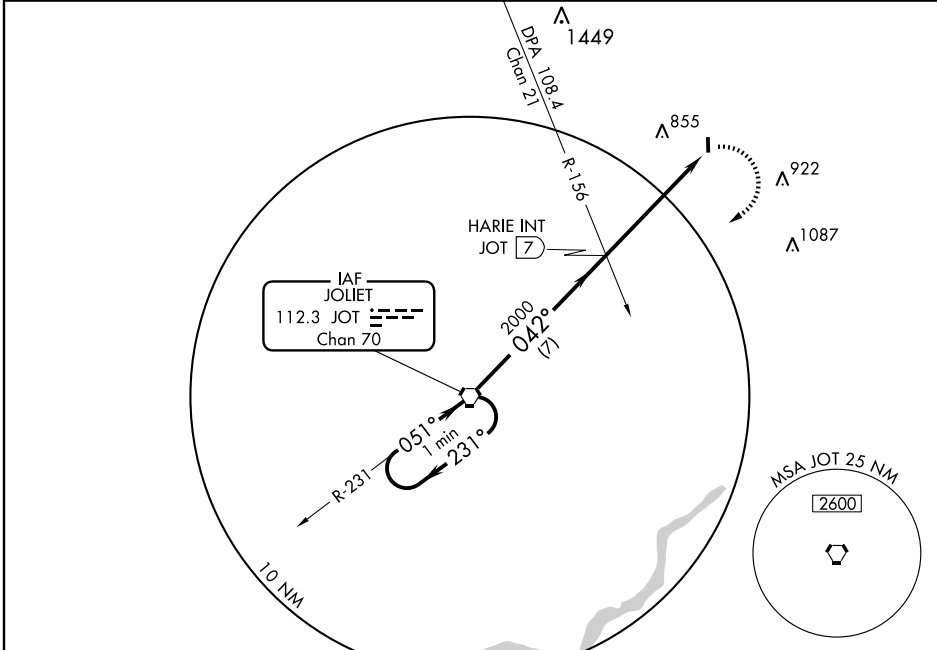
VORTAC JOT 112.3 Chan 70	APP CRS 042°	Rwy Idg TDZE Apt Elev	N/A N/A 670
--	------------------------	-----------------------------	--

Use Lewis University altimeter setting.

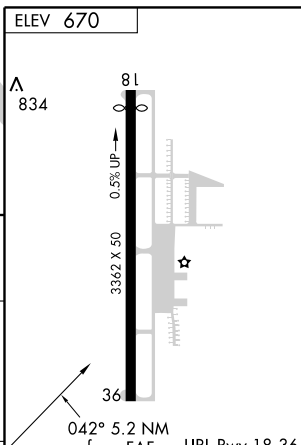
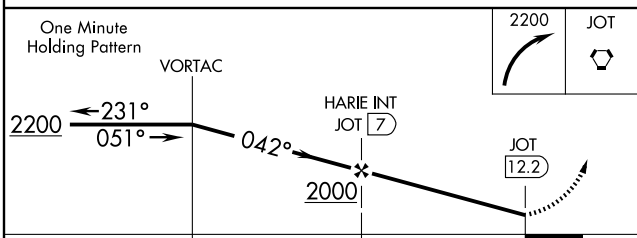
MISSED APPROACH: Climbing right turn to 2200 direct JOT VORTAC and hold.

CHICAGO APP CON
119.35 354.075 388.0

CTAF
122.9



NoPT for arrivals on JOT VORTAC
Airway Radials 171 CW 261.



CATEGORY	A	B	C	D
CIRCLING	1220-1	550 (600-1)		NA

FAF to MAP 5.2 NM					
Knots	60	90	120	150	180
Min:Sec	5:12	3:28	2:36	2:05	1:44

BOLINGBROOK, ILLINOIS
Orig 11125

41°42'N - 88°08'W

BOLINGBROOK'S CLOW INTL (1C5)

VOR-A

EC-3, 31 MAY 2012 to 28 JUN 2012

EC-3, 31 MAY 2012 to 28 JUN 2012