

APP CRS	Rwy Idg	<b>3172</b>
<b>182°</b>	TDZE	<b>N/A</b>
	Apt Elev	<b>269</b>

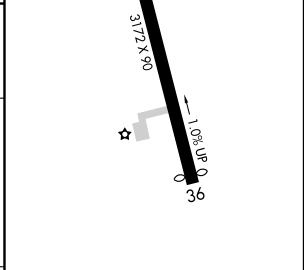
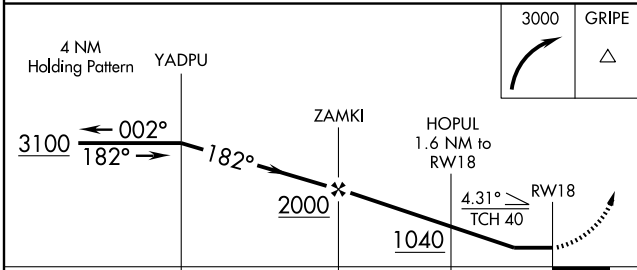
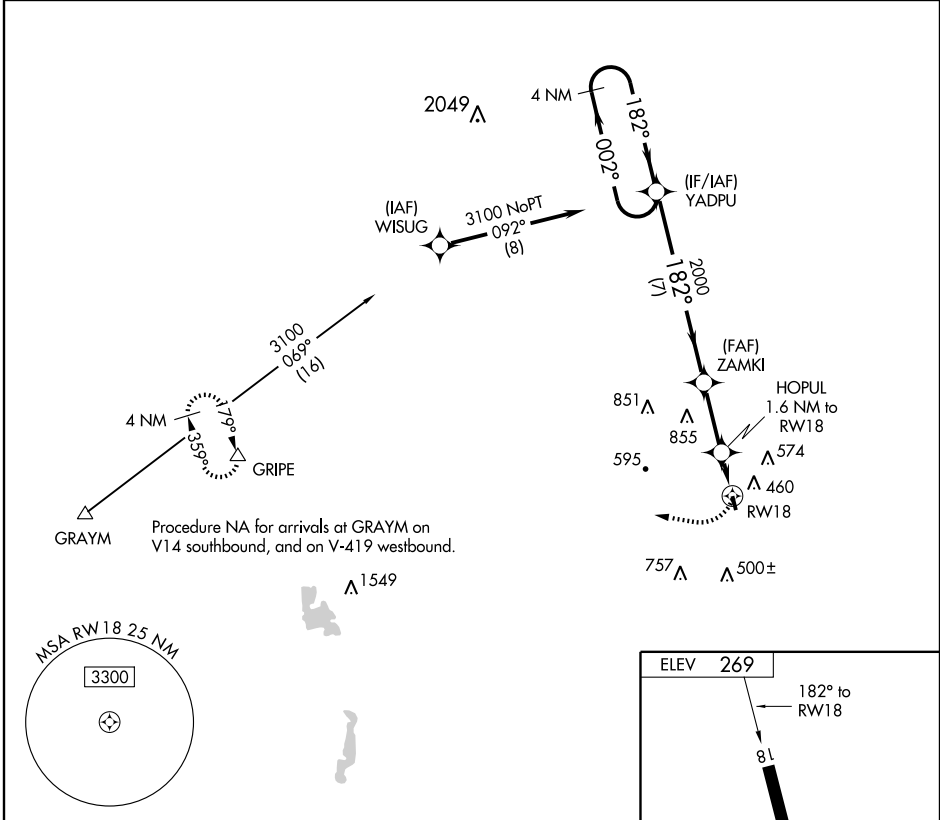
# RNAV (GPS)-A

HOPEDALE INDUSTRIAL PARK (1B6)

**▼** Use Pawtucket altimeter setting; when not received, procedure NA.  
**▲ NA** DME/DME RNP-0.3 NA. Procedure NA at night.  
 Visibility reduction by helicopters NA.

MISSED APPROACH: Climbing right turn to 3000 direct GRIPE and hold.

PAWTUCKET AWOS-3 <b>120.025</b>	BRADLEY APP CON <b>119.0</b>	UNICOM <b>122.8 (CTAF)</b>
------------------------------------	---------------------------------	-------------------------------



CATEGORY	A	B	C	D
CIRCLING	880-1 611 (700-1)	920-1 651 (700-1)	1000-2 731 (800-2)	NA

LIRL Rwy 18-36

NE-1, 31 MAY 2012 to 28 JUN 2012

NE-1, 31 MAY 2012 to 28 JUN 2012

**TAKE-OFF MINIMUMS AND (OBSTACLE) DEPARTURE PROCEDURES**

12152

INSTRUMENT APPROACH PROCEDURE CHARTS

**IFR TAKE-OFF MINIMUMS AND (OBSTACLE) DEPARTURE PROCEDURES**

## Civil Airports and Selected Military Airports

ALL USERS: Airports that have Departure Procedures (DPs) designed specifically to assist pilots in avoiding obstacles during the climb to the minimum enroute altitude, and/or airports that have civil IFR take-off minimums other than standard, are listed below. Take-off Minimums and Departure Procedures apply to all runways unless otherwise specified. Altitudes, unless otherwise indicated, are minimum altitudes in MSL.

DPs specifically designed for obstacle avoidance are referred to as Obstacle Departure Procedures (ODPs) and are described below in text, or published separately as a graphic procedure. If the (Obstacle) DP is published as a graphic procedure, its name will be listed below, and it can be found in either this volume (civil), or the applicable military volume, as appropriate. Users will recognize graphic obstacle DPs by the term "(OBSTACLE)" included in the procedure title; e.g., TETON TWO (OBSTACLE). If not specifically assigned a departure procedure (i.e., ODP, SID, or radar vector) as part of an IFR clearance, an ODP may be required to be flown for obstacle clearance, even though not specifically stated in the IFR clearance. When doing so in this manner, ATC should be informed when the ODP being used contains a specified route to be flown, restrictions before turning, and/or altitude restrictions.

Graphic DPs designed by ATC to standardize traffic flows, ensure aircraft separation and enhance capacity are referred to as "Standard Instrument Departures (SIDs)". SIDs also provide obstacle clearance and are published under the appropriate airport section. ATC clearance must be received prior to flying a SID.

CIVIL USERS NOTE: Title 14 Code of Federal Regulations Part 91 prescribes standard take-off rules and establishes take-off minimums for certain operators as follows: (1) Aircraft having two engines or less - one statute mile. (2) Aircraft having more than two engines - one-half statute mile. These standard minima apply in the absence of any different minima listed below.

MILITARY USERS NOTE: Civil (nonstandard) take-off minima are published below. For military take-off minima, refer to appropriate service directives.

NAME	TAKE-OFF MINIMUMS	NAME	TAKE-OFF MINIMUMS
<b>AUBURN-LEWISTON, ME</b>		<b>AUBURN-LEWISTON MUNI (CONT.)</b>	
<b>AUBURN-LEWISTON MUNI (LEW)</b>		252' left of centerline, 60' AGL/336' MSL. Tree 575' from departure end of runway, 175' left of centerline, 39' AGL/322' MSL. Tree 881' from departure end of runway, 110' right of centerline, 35' AGL/327' MSL. Terrain 159' from departure end of runway, 487' right of centerline, 0' AGL/302' MSL. Tree 1.9 NM from departure end of runway, 247' left of centerline, 129' AGL/576' MSL. Terrain 276' from departure end of runway, 302' right of centerline, 0' AGL/299' MSL. Road 531' from departure end of runway, 156' left of centerline, 0' AGL/305' MSL. Terrain 533' from departure end of runway, 463' right of centerline, 0' AGL/302' MSL. Terrain 18' from departure end of runway, 140' right of centerline, 0' AGL/289' MSL. Tower 1.7 NM from departure end of runway, 4211' left of centerline, 193' AGL/752' MSL. <b>Rwy 22</b> , tree 4322' from departure end of runway, 1403' right of centerline, 87' AGL/439' MSL. Tree 4970' from departure end of runway, 616' left of centerline, 62' AGL/414' MSL. Tree 5547' from departure end of runway, 633' right of centerline, 86' AGL/428' MSL. Tree 5242' from departure end of runway, 1108' right of centerline, 51' AGL/419' MSL. Tree 3040' from departure end of runway, 993' right of centerline, 74' AGL/363' MSL. Ground 4784' from departure end of runway, 88' right of centerline, 0' AGL/404' MSL. Ground 3902' from departure end of runway, 811' right of centerline, 0' AGL/375' MSL. Tree 3189' from departure end of runway, 500' right of centerline, 73' AGL/352' MSL.	
<b>AMDT 5 05076 (FAA)</b>			
TAKE-OFF MINIMUMS: <b>Rwy 17</b> , 500-2¼ or std. with a min. climb of 266' per NM to 900. <b>Rwy 22</b> , std. with a min. climb of 312' per NM to 1500, or 1100-2½ for climb in visual conditions.			
<b>DEPARTURE PROCEDURE: Rwy 17</b> , climb via heading 165° to 900 before turning northeast. <b>Rwy 22</b> , climb to 1500 direct LE LOM. Cross LE LOM at 1500 or above before turning southwest. For climb in visual conditions cross Auburn/Lewiston Muni at or above 1300.			
<b>NOTE: Rwy 4</b> , multiple trees beginning 297' from departure end of runway, 78' right of centerline, up to 90' AGL/386' MSL. Multiple trees beginning 331' from departure end of runway, 277' left of centerline, up to 86' AGL/323' MSL. Abandoned aircraft 73' from departure end of runway, 478' right of centerline, 19' AGL/289' MSL. Abandoned aircraft 36' from departure end of runway, 451' right of centerline, 18' AGL/288' MSL. Pole 1487' from departure end of runway, 348' right of centerline, 51' AGL/314' MSL. Pole 101' from departure end of runway, 387' left of centerline, 37' AGL/277' MSL. Fence 132' from departure end of runway, 306' right of centerline, 11' AGL/267' MSL. <b>Rwy 17</b> , tree 1209' from departure end of runway, 390' right of centerline, 72' AGL/364' MSL. Tree 909' from departure end of runway, 336' right of centerline, 51' AGL/350' MSL. Tree 1819' from departure end of runway, 169' left of centerline, 92' AGL/371' MSL. Tree 1053' from DER,			

12152

**TAKE-OFF MINIMUMS AND (OBSTACLE) DEPARTURE PROCEDURES**

NE-1



## TAKE-OFF MINIMUMS AND (OBSTACLE) DEPARTURE PROCEDURES



12152

**AUBURN-LEWISTON, ME (CON'T)****AUBURN-LEWISTON MUNI (CON'T)**

**Rwy 35**, tree 1877' from departure end of runway, 357' left of centerline, 104' AGL/344' MSL. Tree 870' from departure end of runway, 380' right of centerline, 72' AGL/312' MSL. Tree 1146' from departure end of runway, 378' left of centerline, 77' AGL/317' MSL. Tree 1520' from departure end of runway, 170' right of centerline, 62' AGL/302' MSL.

**AUGUSTA, ME****AUGUSTA STATE (AUG)****AMDT 3 11181 (FAA)**

TAKE-OFF MINIMUMS: **Rwy 8**, 300-1 or std. w/ min. climb of 263' per NM to 600. **Rwy 17**, 300-1 or std. w/min. climb of 283' per NM to 600. **Rwy 26**, 400-2 or std. w/min. climb of 313' per NM to 800.

DEPARTURE PROCEDURE: **Rwy 26**, climb heading 260° to 800 before turning right. **Rwy 35**, climb heading 351° to 1000 before turning left.

NOTE: **Rwy 8**, trees beginning 197' from DER, 91' right of centerline, up to 70' AGL/443' MSL. Fence 200' from DER, 126' right of centerline, 8' AGL/358' MSL. Pole 921' from DER, 334' right of centerline, 52' AGL/422' MSL. Trees beginning 956' from DER, 588' left of centerline, up to 70' AGL/420' MSL. Tower 5173' from DER, 1864' left of centerline, 156' AGL/527' MSL. **Rwy 17**, trees beginning 102' from DER, 289' right of centerline, up to 100' AGL/529' MSL. Poles beginning 107' from DER, 355' left of centerline, up to 45' AGL/385' MSL. Vehicle on road 229' from DER, 250' left of centerline, 15' AGL/355' MSL. Trees beginning 318' from DER, 107' left of centerline, up to 80' AGL/413' MSL. **Rwy 26**, trees beginning 157' from DER, 13' left of centerline, up to 70' AGL/419' MSL. Tree 270' from DER, 90' right of centerline, 90' AGL/419' MSL. Trees and towers beginning 5728' from DER, 769' right of centerline, up to 186' AGL/666' MSL.

**BANGOR, ME****BANGOR INTL (BGR)****AMDT 2 09239 (FAA)**

NOTE: **Rwy 15**, trees beginning 1694' from DER, 629' left of centerline, up to 79' AGL/278' MSL.

**BAR HARBOR, ME****HANCOCK COUNTY-BAR HARBOR (BHB)****AMDT 4 06159 (FAA)**

DEPARTURE PROCEDURE: **Rwy 17**, climbing right turn via heading 220° to 2100 before proceeding on course.

**Rwy 22**, climb via heading 224° to 1100 before proceeding east or southeast bound. **Rwy 35**, climb via heading 349° to 600 before proceeding on course.

NOTE: **Rwy 4**, road 324' from departure end of runway, 524' left of centerline, 15' AGL/79' MSL. Multiple trees beginning 119' from departure end of runway, 231' right of centerline, up to 60' AGL/193' MSL. **Rwy 17**, bush 116' from departure end of runway, 164' left of centerline, 10' AGL/47' MSL. Tree 245' from departure end of runway, 346' right of centerline, 44' AGL/82' MSL. **Rwy 22**, multiple poles and trees beginning 562' from departure end of runway, 329' left of centerline, up to 60' AGL/135' MSL. Terrain, multiple poles and trees beginning 450' left of departure end of runway, up to 60' AGL/142' MSL. **Rwy 35**, terrain and multiple trees beginning 35' from departure end of runway, 340' left of centerline, up to 60' AGL/217' MSL. Glideslope antenna and multiple trees beginning 657' from departure end of runway, 565' right of centerline up to 60' AGL/146' MSL.

**BARRE-MONTPELIER, VT****EDWARD F. KNAPP STATE (MPV)****AMDT 4 96284 (FAA)**

TAKE-OFF MINIMUMS: **Rwy 17**, 400-1. **Rwy 23**, 500-2 or std. with a min. climb of 400' per NM to 2600.

DEPARTURE PROCEDURE: **Rwy 5**, climb runway heading to 2100, then climbing right turn to 3900 direct MPV VOR/DME. **Rwy 17**, climb direct to MPV VOR/DME, climb in holding pattern (N, right turns, 160° inbound) to 3500 before proceeding on course. **Rwy 23**, climbing left turn to 3500 direct MPV VOR/DME. **Rwy 35**, climb runway heading to 1600, then climbing right turn to 3900 direct MPV VOR/DME.

**BEDFORD, MA****LAURENCE G. HANSCOM FIELD (BED)****AMDT 5 11069 (FAA)**

TAKE-OFF MINIMUMS: **Rwy 11**, 300-1½ or std. w/min. climb of 245' per NM to 400, or alternatively, with standard takeoff minimums and a normal 200' per NM climb gradient, takeoff must occur no later than 2000' prior to DER. **Rwy 23**, 300-1¾ or std. w/min. climb of 286' per NM to 500.

NOTE: **Rwy 5**, bush and trees beginning 44' from DER, 10' left of centerline, up to 88' AGL/214' MSL. Fence, poles, and trees beginning 152' from DER, 113' right of centerline, up to 91' AGL/217' MSL. **Rwy 11**, trees 2694' from DER, 924' left of centerline, up to 65' AGL/192' MSL. Tower 5040' from DER, 1682' left of centerline, 155' AGL/282' MSL. **Rwy 23**, trees beginning 1081' from DER, 161' left of centerline, up to 86' AGL/252' MSL. Terrain, vehicles on road, and trees beginning 534' from DER, 4' right of centerline, up to 81' AGL/228' MSL. Trees 1.1 NM from DER, 372' left of centerline, up to 60' AGL/364' MSL. Trees 1.4 NM from DER, 976' left of centerline, up to 70' AGL/379' MSL. **Rwy 29**, pole and trees beginning 388' from DER, 323' left of centerline, up to 62' AGL/240' MSL. Trees beginning 2675' from DER, 228' right of centerline, up to 60' AGL/246' MSL.

31 MAY 2012 to 28 JUN 2012

31 MAY 2012 to 28 JUN 2012

12152



## TAKE-OFF MINIMUMS AND (OBSTACLE) DEPARTURE PROCEDURES



NE-1



## TAKE-OFF MINIMUMS AND (OBSTACLE) DEPARTURE PROCEDURES



12152

**BELFAST, ME**

BELFAST MUNI (BST)

AMDT 2 07130 (FAA)

TAKE-OFF MINIMUMS: **Rwy 33**, 300-1¾ or std. with a min. climb of 219' per NM to 600.DEPARTURE PROCEDURE: **Rwy 15**, climb heading 136° to 900 before turning south.NOTE: **Rwy 33**, light pole 1955' from departure end of runway, 510' left of centerline, 100' AGL/297' MSL. Multiple trees beginning 1.4 NM from departure end of runway, 1682' left of centerline, up to 80' AGL/429' MSL.**BENNINGTON, VT**

WILLIAM H. MORSE STATE (DDH)

AMDT 3 12152 (FAA)

TAKE-OFF MINIMUMS: **Rwy 13**, std. w/min. climb of 645' per NM to 4000 or 2600-3 for climb in visual conditions. **Rwy 31**, 400-1 w/min. climb of 300' per NM to 4200 or 2600-3 for climb in visual conditions.DEPARTURE PROCEDURE: **Rwy 13**, climbing left turn direct CAM VOR/DME, continue climb-in-hold (North, right turns, 160° inbound) to 4400 before proceeding on course or...**Rwy 31**, climbing right turn direct CAM VOR/DME, continue climb-in-hold (North, right turns, 160° inbound) to 4400 before proceeding on course or...

... For climb in visual conditions: cross William H. Morse State Airport at or above 3300 before proceeding on course. When executing VCOA, notify ATC prior to departure.

NOTE: **Rwy 13**, rising terrain beginning 100' from DER, right to left of centerline, up to 868' MSL. Poles beginning 195' from DER, 229' right of centerline, up to 30' AGL/858' MSL. Trees beginning 358' from DER, left and right of centerline, up to 95' AGL/1279' MSL. **Rwy 31**, multiple trees beginning 116' from DER, right and left of centerline, up to 95' AGL/1139' MSL.**BERLIN, NH**

BERLIN RGNL (BML)

AMDT 1 11069 (FAA)

TAKE-OFF MINIMUMS: **Rwy 18**, std. w/min. climb of 462' per NM to 4000 or 3500-3 for climb in visual conditions. **Rwy 36**, std. w/min. climb of 400' per NM to 4400 or 3500-3 for climb in visual conditions.DEPARTURE PROCEDURE: **Rwy 18**, climbing right turn to 7000 direct BML VOR/DME, continue climb in BML VOR/DME holding pattern (hold SW, left turns, 030° inbound) to cross BML VOR/DME at or above the MEA for direction of flight, or for climb in visual conditions cross Berlin RGNL Airport at or above 4500 before proceeding on course. **Rwy 36**, climbing right turn to 7000 direct BML VOR/DME, continue climb in BML VOR/DME holding pattern (hold SW, left turns, 030° inbound) to cross BML VOR/DME at or above the MEA for direction of flight, or for climb in visual conditions cross Berlin RGNL Airport at or above 4500 before proceeding on course.NOTE: **Rwy 18**, building 44' from DER, 361' left of centerline, up to 10' AGL/1143' MSL. Trees 19' from DER, 5' right of centerline, up to 100' AGL/1267' MSL. Trees 44' from DER, 2' left of centerline, up to 100' AGL/1281' MSL. **Rwy 36**, bush 47' from DER, 153' left of centerline, up to 45' AGL/1168' MSL. Trees 27' from DER, 28' right of centerline, up to 100' AGL/1298' MSL. Trees 9' from DER, 123' left of centerline, up to 100' AGL/1224' MSL.**BEVERLY, MA**

BEVERLY MUNI (BVY)

AMDT 3 11069 (FAA)

DEPARTURE PROCEDURE: **Rwy 27**, climb heading 270° to 700 before turning left.NOTE: **Rwy 9**, trees beginning 127' from DER, 74' left of centerline, up to 115' AGL/232' MSL. Trees beginning 303' from DER, 214' right of centerline, up to 96' AGL/193' MSL. **Rwy 16**, navaid and trees beginning 72' from DER, 234' left of centerline, up to 80' AGL/148' MSL.Terrain, light poles, stacks, buildings, and trees beginning 306' from DER, 5' right of centerline, up to 76' AGL/193' MSL. **Rwy 27**, antenna on building and trees beginning 182' from DER, 119' left of centerline, up to 108' AGL/217' MSL. Trees beginning 243' from DER, 109' right of centerline, up to 102' AGL/160' MSL.**Rwy 34**, trees beginning 430' from DER, 5' left of centerline, up to 91' AGL/188' MSL. Pole and trees beginning 509' from DER, 1' right of centerline, up to 77' AGL/174' MSL.**BIDDEFORD, ME**

BIDDEFORD MUNI (B19)

ORIG 07298 (FAA)

TAKE-OFF MINIMUMS: **Rwy 24**, 300-2 or std. w/min. climb of 214' per NM to 600, or alternatively, w/std. takeoff minimums and normal 200'/NM climb gradient, takeoff must occur no later than 1700 prior to departure end of runway.NOTE: **Rwy 6**, multiple trees beginning 121' from departure end of runway, 243' left of centerline, up to 60' AGL/229' MSL. Multiple trees beginning 23' from departure end of runway, 132' right of centerline, up to 60' AGL/219' MSL. Multiple trees beginning 538' from departure end of runway, 6' right of centerline, up to 60' AGL/229' MSL. **Rwy 24**, multiple trees beginning 342' from departure end of runway, 287' left of centerline, up to 60' AGL/219' MSL. Multiple trees beginning 492' from departure end of runway, 242' right of centerline, up to 60' AGL/209' MSL. Multiple trees beginning 1317' from departure end of runway, 44' right of centerline, up to 60' AGL/209' MSL. Assumed obstacle 1.7 NM from departure end of runway, 1802' right of centerline, 200' AGL/429' MSL.**BLOCK ISLAND, RI**

BLOCK ISLAND STATE (BID)

AMDT 3 10042 (FAA)

NOTE: **Rwy 10**, bush 136' from DER, 183' left of centerline, 9' AGL/110' MSL. Tower 2736' from DER, 1203' left of centerline, 167' AGL/210' MSL. **Rwy 28**, buildings with chimneys beginning 1105' from DER, 8' left of centerline, up to 30' AGL/196' MSL. Trees beginning 3' from DER, 4' left of centerline, up to 87' AGL/189' MSL. Trees beginning 380' from DER, 70' left of centerline, up to 78' AGL/186' MSL. Windmill with antennas 3437' from DER, 1005' right of centerline, 72' AGL/257' MSL.

31 MAY 2012 to 28 JUN 2012

31 MAY 2012 to 28 JUN 2012

12152



## TAKE-OFF MINIMUMS AND (OBSTACLE) DEPARTURE PROCEDURES



NE-1



## TAKE-OFF MINIMUMS AND (OBSTACLE) DEPARTURE PROCEDURES



12152

**BOSTON, MA**GENERAL EDWARD LAWRENCE LOGAN  
INTL (BOS)

AMDT 13 10322 (FAA)

TAKE-OFF MINIMUMS: **Rwy 32, 33R**, N/A - environmental. **Rwy 4L**, 300-1 or std. w/min. climb of 358' per NM to 300. **Rwy 9**, 300-1¼ or std. w/min. climb of 257' per NM to 300. **Rwy 14**, 500-3 or std. w/min. climb of 223' per NM to 600, or alternatively, with std. takeoff minimums and a normal 200' per NM climb gradient, takeoff must occur no later than 1900' prior to DER. **Rwy 22L**, 300-1 or std. if tower reports no tall vessels in the departure area. **Rwy 22R**, 400-2 or std. w/min. climb of 320' per NM to 500. **Rwy 27**, std. w/min. climb of 474' per NM to 1300. **Rwy 33L**, 300-1¾ or std. w/min. climb of 224' per NM to 400, or alternatively, with std. takeoff minimums and a normal 200' per NM climb gradient, takeoff must occur no later than 1900 feet prior to DER.

DEPARTURE PROCEDURE: **Rwy 4L**, climb on a heading between 292° clockwise to 215° from DER, or minimum climb of 210' per NM to 1100 for all other courses. **Rwy 14**, climb on a heading between 322° clockwise to 258° from DER, or minimum climb of 236' per NM to 1100 for all other courses. **Rwy 15R**, climb heading 151° to 600 before turning right. **Rwy 22L**, climb heading 216° to 800 before turning right.

**Rwy 22R**, climb heading 216° to 900 before turning right. **Rwy 33L**, climb heading 331° to 700 before turning left.

NOTE: **Rwy 4L**, ships beginning 693' from DER, on centerline, up to 50' AGL/50' MSL. Trees beginning 2094' from DER, 91' left of centerline, up to 46' AGL/143' MSL. Pole and trees beginning 1806' from DER, 740' right of centerline, up to 51' AGL/79' MSL. Trees 3975' from DER, 1486' left of centerline up to 71' AGL/198' MSL. **Rwy 4R**, ships beginning 579' from DER, on centerline, up to 50' AGL/50' MSL. Pole and trees beginning 1806' from DER, 403' left of centerline, up to 51' AGL/79' MSL. **Rwy 9**, ships 762' from DER, on centerline, up to 65' AGL/65' MSL. Tank 5904' from DER, 1453' left of centerline, 109' AGL/206' MSL.

**Rwy 14**, ship rig 5439' from DER, 1824' right of centerline, 176' AGL/176' MSL. Windmill 2.5 NM from DER, 2997' right of centerline, 394' AGL/434' MSL. **Rwy 15L**, sign 169' from DER, 279' right of centerline, 6' AGL/19' MSL. **Rwy 15R**, sign 45' from DER, 267' right of centerline, 6' AGL/16' MSL. **Rwy 22L**, pole 394' from DER, on centerline, 15' AGL/31' MSL. Tower 3585' from DER, 926' left of centerline, 108' AGL/128' MSL. Mobile crane 3675' from DER, 439' right of centerline, 122' AGL/145' MSL. Ship rig 2440' from DER, 34' left of centerline, 176' AGL/176' MSL. **Rwy 22R**, ship rig 4064' from DER, 8' right of centerline, 176' AGL/176' MSL. Stacks beginning 1.4 NM from DER, 2795' right of centerline, up to 320' AGL/335' MSL.

**Rwy 27**, light pole and rod beginning 1690' from DER, 759' right of centerline, up to 60' AGL/100' MSL.

**Rwy 33L**, electrical systems, buildings, chimney on building, and tank beginning 796' from DER, 603' left of centerline, up to 40' AGL/149' MSL. Sign, wind indicator on tower, and trees beginning 248' from DER, 51' right of centerline, up to 35' AGL/101' MSL. Bridge 1.4 NM from DER, 2568' left of centerline, 262' AGL/262' MSL.

**BRIDGEPORT, CT**

IGOR I. SIKORSKY MEMORIAL (BDR)

AMDT 5 11293 (FAA)

TAKE-OFF MINIMUMS: **Rwy 29**, 600-2¾ or std. w/min. climb of 300' per NM to 700.

NOTE: **Rwy 6**, fence 14' from DER, 95' left of centerline, 17' AGL/18' MSL. Vehicles on road beginning 79' from DER, 1' right of centerline, up to 15' AGL/25' MSL. **Rwy 11**, vehicles on road beginning 195' from DER, 127' left of centerline, up to 15' AGL/28' MSL. Vehicles on road and poles beginning 207' from DER, 6' right of centerline, up to 73' AGL/73' MSL. **Rwy 24**, vehicles on road beginning 484' from DER, 537' right of centerline, up to 15' AGL/25' MSL. **Rwy 29**, building 555' from DER, 622' right of centerline, 57' AGL/59' MSL. Stack 2.2 NM from DER, 275' left of centerline, 497' AGL/512' MSL.

**BRUNSWICK, ME**

BRUNSWICK EXECUTIVE (BXM)

ORIG 11237 (FAA)

NOTE: **Rwy 1L**, tree 2018' from DER, 943' right of centerline, 100' AGL/159' MSL. Trees beginning 2272' from DER, 335' left of centerline, up to 100' AGL/159' MSL. **Rwy 1R**, tree 1985' from DER, 345' right of centerline, 100' AGL/156' MSL. Tree 2823' from DER, 1045' left of centerline, 100' AGL/159' MSL. **Rwy 19L**, trees beginning 2170' from DER, 457' left of centerline, up to 100' AGL/179' MSL. Tree 2136' from DER, 498' right of centerline, 100' AGL/169' MSL. **Rwy 19R**, trees beginning 2137' from DER, 201' left of centerline, up to 100' AGL/179' MSL.

**BURLINGTON, VT**

BURLINGTON INTL (BTV)

AMDT 13 10210 (FAA)

TAKE-OFF MINIMUMS: **Rwy 1**, std. w/min. climb of 290' per NM to 3200 or 3000-3 for climb in visual conditions. **Rwy 15**, std. w/min. climb of 375' per NM to 5900 or 3000-3 for climb in visual conditions. **Rwy 19**, std. w/min. climb of 290' per NM to 5300 or 3000-3 for climb in visual conditions. **Rwy 33**, std. w/min. climb of 210' per NM to 2400 or 3000-3 for climb in visual conditions.

DEPARTURE PROCEDURE: **Rwy 1**, climb heading 006° to 3200 before proceeding on course or for climb in visual conditions cross Burlington Intl airport at or above 3200 before proceeding on course. **Rwy 15**, for climb in visual conditions cross Burlington Intl airport at or above 3200 before proceeding on course. **Rwy 19**, climb heading 186° to 3200 before proceeding on course or for climb in visual conditions cross Burlington Intl airport at or above 3200 before proceeding on course. **Rwy 33**, climb heading 326° to 2400 before proceeding on course or for climb in visual conditions cross Burlington Intl airport at or above 3200 before proceeding on course.

NOTE: **Rwy 1**, trees beginning 1396' from DER, 216' right of centerline, up to 64' AGL/384' MSL trees 1694' from DER, 200' left of centerline, up to 80' AGL/380' MSL. **Rwy 15**, bush 318' from DER, 292' left of centerline, up to 23' AGL/343' MSL. Trees beginning 1418' from DER, 358' right of centerline, up to 27 feet AGL/387' MSL. Hopper and trees beginning 1801' from DER, 377' left of centerline, up to 63' AGL/403' MSL. Building 3453' from DER, 1145' left of centerline, 110' AGL/430' MSL. **Rwy 19**, trees beginning 168' from DER, 24' right of centerline, up to 56' AGL/436' MSL. Trees beginning 172' from DER, 184' left of centerline, up to 93' AGL/413' MSL. **Rwy 33**, pole and trees beginning 971' from DER, 755' left of centerline, up to 97' AGL/357' MSL. Trees 1091' from DER, 590' right of centerline, up to 34' AGL/334' MSL.

31 MAY 2012 to 28 JUN 2012

31 MAY 2012 to 28 JUN 2012

12152



## TAKE-OFF MINIMUMS AND (OBSTACLE) DEPARTURE PROCEDURES



NE-1



## TAKE-OFF MINIMUMS AND (OBSTACLE) DEPARTURE PROCEDURES



12152

**CARIBOU, ME**

CARIBOU MUNI (CAR)  
AMDT 1 95061 (FAA)  
TAKE-OFF MINIMUMS: **Rwys 1, 11, 19, 29**, 300-1.

**CHATHAM, MA**

CHATHAM MUNI (CQX)  
ORIG 07298 (FAA)  
TAKE-OFF MINIMUMS: **Rwy 6**, 300-1 or std. w/ min. climb of 462' per NM to 300. **Rwy 24**, 400-2 or std. w/ min. climb of 248' per NM to 500.  
NOTE: **Rwy 6**, multiple trees beginning 26' from departure end of runway, 158' left of centerline, up to 100' AGL/169' MSL. Multiple trees beginning 62' from departure end of runway, 245' right of centerline, up to 100' AGL/159' MSL. **Rwy 24**, multiple trees beginning 179' from departure end of runway, 216' left of centerline, up to 100' AGL/159' MSL. Multiple trees beginning 318' from departure end of runway, 227' right of centerline, up to 100' AGL/159' MSL. Tower 1.6 NM from departure end of runway, 2526' right of centerline, 313' AGL/318' MSL.

**CHESTER, CT**

CHESTER (SNC)  
ORIG 10322 (FAA)  
TAKE-OFF MINIMUMS: **Rwy 35**, 300-3 or std. w/ min. climb of 285' per NM to 900.  
NOTE: **Rwy 17**, trees beginning at DER, 350' left of centerline CW to 250' right of centerline, up to 100' AGL/449' MSL. **Rwy 35**, tree 6015' from DER, 586' right of centerline 100' AGL/609' MSL. Tree 1.7 NM from DER, 847' right of centerline 200' AGL/709' MSL. Tree line beginning 100' from DER, 250' left of centerline to 1000' right of centerline, up to 100' AGL/469' MSL.

**CLAREMONT, NH**

CLAREMONT MUNI (CNH)  
AMDT 2 05244 (FAA)  
TAKE-OFF MINIMUMS: **Rwy 11**, 700-3 or std. w/ min. climb of 490' per NM to 1400, or 3100-2½ for climb in visual conditions. **Rwy 29**, 1300-3 or 3100-2½ for climb in visual conditions.  
DEPARTURE PROCEDURE: **Rwys 11, 29**, climb in visual conditions to cross Claremont Muni at or above 3000.  
NOTE: **Rwy 11**, multiple trees and towers on rising terrain, 1.5 NM from departure end of runway, 3000' right of centerline, and 1.6 NM from departure end of runway, 2660' left of centerline, up to 200' AGL/1143' MSL. **Rwy 29**, multiple trees on rising terrain, 1.1 NM from departure end of runway, 800' left of centerline, and 1.3 NM from departure end of runway, 2000' right of centerline, up to 80' AGL/1044' MSL. Trees and towers 2 NM from departure end of runway on centerline, up to 200' AGL/929' MSL.

**CONCORD, NH**

CONCORD MUNI (CON)  
AMDT 3 99308 (FAA)  
TAKE-OFF MINIMUMS: **Rwy 12**, 500-1 or std. with a min. climb of 350' per NM to 1300. **Rwy 17**, 300-1 or std. with a min. climb of 220' per NM to 1200. **Rwy 30**, 800-3 or std. with a min. climb of 260' per NM to 1300. **Rwy 35**, 300-1 or std. with a min. climb of 320' per NM to 1300.  
DEPARTURE PROCEDURE: **Rwy 12**, climb to 900 then climbing right turn to CON VORTAC before proceeding on course. **Rwy 17**, climb to 1200 before turning on course. **Rwy 35**, climb to 1300 before turning on course.

**DANBURY, CT**

DANBURY MUNI (DXR)  
AMDT 4 12124 (FAA)  
TAKE OFF MINIMUMS: **Rwy 17**, NA - terrain. **Rwy 8**, 600-2. **Rwy 26**, 600-2½. **Rwy 35**, std. w/ min. climb of 470' per NM to 1100 or 1200-2½ for climb in visual conditions.  
DEPARTURE PROCEDURE: **Rwy 8**, climb heading 084° to 1200 before turning. **Rwy 26**, climb heading 264° to 1300 before turning. **Rwy 35**, for climb in visual conditions, cross Danbury Muni at or above 1500 before proceeding on course. When executing VCOA, notify ATC prior to departure.  
NOTE: **Rwy 8**, vehicles on roadway 93' from DER, 222' right of centerline, up to 15' AGL/480' MSL. Pole 308' from DER, 185' right of centerline, 39' AGL/505' MSL. Buildings beginning 316' from DER, 366' left of centerline, up to 35' AGL/499' MSL. Pole 691' from DER, 150' right of centerline, 56' AGL/524' MSL. Pole 885' from DER, 333' left of centerline, 62' AGL/532' MSL. Building 1876' from DER, 520' left of centerline, 61' AGL/646' MSL. Pole 2017' from DER, 201' right of centerline, 96' AGL/701' MSL. Trees and pole beginning 2372' from DER, 28' right of centerline, up to 105' AGL/799' MSL. Building 1.5 NM from DER, 786' right of centerline, 118' AGL/722' MSL. Tower 1.5 NM from DER, 2377' right of centerline, 275' AGL/1015' MSL. **Rwy 26**, terrain 85' from DER, 240' left of centerline, 461' MSL. Trees beginning 1543' from DER, 910' left of centerline, up to 100' AGL/959' MSL. Pole 1.2 NM from DER, 915' left of centerline, 100' AGL/709' MSL. Pole 2 NM from DER, 1375' left of centerline, 82' AGL/825' MSL. **Rwy 35**, fence 43' from DER, 59' left of centerline, 18' AGL/458' MSL. Vehicles on roadway 77' from DER, left and right of centerline, up to 15' AGL/467' MSL. Poles beginning 416' from DER, left and right of centerline, up to 72' AGL/505' MSL. Building 916' from DER, 462' right of centerline, 95' AGL/521' MSL. Trees beginning 1.3 NM from DER, 427' right of centerline, up to 100' AGL/839' MSL. Building 1.2 NM from DER, 695' right of centerline, 62' AGL/722' MSL. Building 1.4 NM from DER, 187' right of centerline, 59' AGL/758' MSL.

31 MAY 2012 to 28 JUN 2012

31 MAY 2012 to 28 JUN 2012

12152



## TAKE-OFF MINIMUMS AND (OBSTACLE) DEPARTURE PROCEDURES



NE-1

**TAKE-OFF MINIMUMS AND (OBSTACLE) DEPARTURE PROCEDURES**

12152

**DANIELSON, CT**

DANIELSON (LZD)

AMDT 3 93231 (FAA)

TAKE-OFF MINIMUMS: **Rwy 13**, 700-2 or std. with a min. climb of 300' per NM to 1200.DEPARTURE PROCEDURE: **Rwy 13**, climb to 1100 before turning on course. **Rwy 31**, climb to 1000 feet before turning on course.**DEXTER, ME**

DEXTER RGNL (1B0)

AMDT1 12096 (FAA)

TAKE-OFF MINIMUMS: **Rwys 7, 25**, NA, Turf. **Rwy 34**, 600-2½ or std. w/min. climb of 355' per NM to 1200.DEPARTURE PROCEDURE: **Rwy 16**, climb heading 157° to 1200 before turning northeast bound. **Rwy 34**, climb heading 337° to 1300 before proceeding on course.NOTE: **Rwy 16**, trees, power lines, vehicles, and buildings beginning 105' from DER, left and right of centerline, up to 100' AGL/629' MSL. **Rwy 34**, trees beginning 53' from DER, left and right of centerline, up to 100' AGL/619' MSL.**EASTPORT, ME**

EASTPORT MUNI (EPM)

ORIG 94174 (FAA)

TAKE-OFF MINIMUMS: **Rwy 33**, 300-1 or std. with a min. climb of 240' per NM to 300.**ELIOT, ME**

LITTLEBROOK AIR PARK (3B4)

ORIG 03247 (FAA)

NOTE: **Rwy 12**, house 118' right of departure end of runway, 23' AGL/129' MSL. Brush 200' from departure end of runway, 66' left of centerline, 16' AGL/122' MSL. Trees 345' from departure end of runway, 140' left of centerline, 71' AGL/130' MSL. **Rwy 30**, trees 220' from departure end of runway, 125' right of centerline, 19' AGL/144' MSL. Brush 100' right of departure end of runway, 20' AGL/159' MSL.**FITCHBURG, MA**

FITCHBURG MUNI (FIT)

AMDT 5 05244 (FAA)

TAKE-OFF MINIMUMS: **Rwys 2, 14, 20**, NA-obstacles. **Rwy 32**, std. with a min. climb of 314' per NM to 1600, or 1500-2½ for climb in visual conditions.DEPARTURE PROCEDURE: **Rwy 32**, climb via heading 324° to 2600 before proceeding on course. For climb in visual conditions: cross Fitchburg Muni Airport at or above 1800.NOTE: **Rwy 32**, multiple trees beginning 144' from departure end of runway, 260' left of centerline up to 100' AGL/796' MSL, multiple trees beginning 36' from departure end of runway, 150' right of centerline up to 100' AGL/796' MSL.**FRENCHVILLE, ME**

NORTHERN AROOSTOOK RGNL (FVE)

ORIG 07298 (FAA)

TAKE-OFF MINIMUMS: **Rwy 32**, 300-1½ or std. w/min. climb of 503' per NM to 1300.NOTE: **Rwy 14**, trees beginning 101' from departure end of runway, 348' right of centerline, up to 80' AGL/1079' MSL.**Rwy 32**, trees beginning 3128' from departure end of runway, 952' left of centerline, up to 80' AGL/1179' MSL, trees beginning 1608' from departure end of runway, 433' right of centerline, up to 80' AGL/1119' MSL.**FRYEBURG, ME**

EASTERN SLOPES RGNL (IZG)

AMDT 4A 10070 (FAA)

TAKE-OFF MINIMUMS: **Rwy 14**, std. with a min. climb of 310' per NM to 2100, or 1600-3 for climb in visual conditions. **Rwy 32**, 2200-2 with a min. climb of 471' per NM to 6600.DEPARTURE PROCEDURE: **Rwy 14**, climb heading 143° to 3000 before turning. For climb in visual conditions cross Eastern Slopes Rgnl airport at or above 3800 before proceeding on course. **Rwy 32**, for climb in visual conditions cross Eastern Slopes Rgnl airport at or above 3800 before proceeding on course.NOTE: **Rwy 32**, tree 454' from departure end of runway, 558' left of centerline, 100' AGL/579' MSL. Trees beginning 1249' from departure end of runway, 734' right of centerline, up to 100' AGL/659' MSL. Trees and tower beginning 1.1 NM from departure end of runway, 2155' left of centerline, up to 100' AGL/1139' MSL.**GARDNER, MA**

GARDNER MUNI (GDM)

AMDT 2 11013 (FAA)

TAKE-OFF MINIMUMS: **Rwys 18, 36**, 1000-2½ for climb in visual conditions.

DEPARTURE PROCEDURE: for climb in visual conditions, cross Gardner Muni at or above 1800 before proceeding on course.

NOTE: **Rwy 18**, trees beginning 118' from DER, 466' right of centerline, up to 100' AGL/1035' MSL. Trees beginning 138' from DER, 533' left of centerline, up to 100' AGL/1213' MSL. Trees beginning 1799' from DER, 955' left of centerline, up to 100' AGL/1133' MSL, trees beginning 1 NM from DER, 1554' left of centerline, up to 100' AGL/1213' MSL. **Rwy 36**, trees beginning 1' from DER, 409' right of centerline, up to 100' AGL/1253' MSL. Trees beginning 251' from DER, 387' left of centerline, up to 100' AGL/1133' MSL. Trees beginning 1883' from DER, 990' left of centerline, up to 100' AGL/1133' MSL.**GREAT BARRINGTON, MA**

WALTER J. KOLADZA (GBR)

AMDT 2 96312 (FAA)

TAKE-OFF MINIMUMS: **Rwy 11**, 1200-2 or std. with a min. climb of 440' per NM until passing 2000. **Rwy 29**, 800-2 or std. with a min. climb of 310' per NM to 1600.DEPARTURE PROCEDURE: **Rwys 11, 29**, climb runway heading to 2200 before proceeding on course.**GREENVILLE, ME**

GREENVILLE MUNI (3B1)

AMDT 1 94202 (FAA)

TAKE-OFF MINIMUMS: **Rwy 3**, 1000-3.**Rwys 21, 32**, 300-1.DEPARTURE PROCEDURE: **Rwy 3**, climbing left turn heading 005° to 3000 before proceeding on course. **Rwys 14, 21**, climb runway heading to 3000 before proceeding on course. **Rwy 32**, climbing right turn heading 005° to 3000 before proceeding on course.**GREENVILLE SEAPLANE BASE (52B)**

AMDT 2 95173 (FAA)

TAKE-OFF MINIMUMS: **North/South**, 600-1.DEPARTURE PROCEDURE: **North**, climb to 3400 via heading 360° before proceeding on course. **South**, climb to 3400 via heading 180° before proceeding on course.

12152

**TAKE-OFF MINIMUMS AND (OBSTACLE) DEPARTURE PROCEDURES**

NE-1

31 MAY 2012 to 28 JUN 2012

31 MAY 2012 to 28 JUN 2012



## TAKE-OFF MINIMUMS AND (OBSTACLE) DEPARTURE PROCEDURES



12152

**GROTON (NEW LONDON), CT**

GROTON-NEW LONDON (GON)

AMDT 8 12040 (FAA)

TAKE-OFF MINIMUMS: **Rwy 5**, 300-2 or std. w/min. climb gradient of 260' per NM to 400. **Rwy 15**, 300-1 or std. w/min. climb gradient of 425' per NM to 300. **Rwy 33**, 300-1½ or std. w/min. climb of 380' per NM to 300.

DEPARTURE PROCEDURE: **Rwy 33**, climb on GON VOR/DME R-335 to 2000 before proceeding on course.

NOTE: **Rwy 23**, bush 570' from DER, 490' right of centerline, 12' AGL/21' MSL. Tree 2770' from DER, 700' left of centerline, 50' AGL/76' MSL. **Rwy 5**, REIL 74' from DER, 151' left of centerline, 3' AGL/9' MSL. Fence beginning 186' from DER, 186' right of centerline, up to 7' AGL/18' MSL. Vehicle on road 215' from DER, 501' left of centerline, 15' AGL/30' MSL. Multiple poles beginning 205' from DER, 474' left of centerline, up to 30' AGL/52' MSL. Multiple trees beginning 416' from DER, right and left of centerline, up to 80' AGL/94' MSL. Multiple trees beginning 6918' from DER, right and left of centerline, up to 80' AGL/286' MSL. **Rwy 15**, bush 54' from DER, 238' right of centerline, 4' AGL/11' MSL. Trees beginning 1703' from DER, right and left of centerline, up to 81' AGL/153' MSL. **Rwy 33**, multiple trees beginning 106' from DER, left and right of centerline, up to 50' AGL/219' MSL. Multiple poles beginning 163' from DER, right and left of centerline, up to 20' AGL/48' MSL. Railroad 201' from DER, 163' left of centerline, 15' AGL/32' MSL. Multiple poles beginning 4279' from DER, 235' left of centerline, up to 100' AGL/207' MSL. Tank 5144' from DER, 926' left of centerline, 88' AGL/225' MSL.

**HARTFORD, CT**

HARTFORD-BRAINARD (HFD)

AMDT 5 10210 (FAA)

TAKE-OFF MINIMUMS: **Rwys 11, 29**, NA-Environmental. **Rwy 20**, 300-1½ or std. w/min. climb of 217' per NM to 300, alternatively, with standard take-off minimums and a normal 200'/NM climb gradient, take-off must occur no later than 1500' prior to DER.

DEPARTURE PROCEDURE: **Rwy 2**, climb heading 024° to 1000 before turning left. **Rwy 20**, climb heading 175° to 1300 before turning right.

NOTE: **Rwy 2**, pipe on obstruction light building, beginning 376' from DER, 593' left of centerline, up to 25' AGL/57' MSL. Bushes beginning 587' from DER, 186' left of centerline, up to 10' AGL/54' MSL. Trees beginning 765' from DER, 59' left of centerline, up to 100' AGL/134' MSL. Trees beginning 57' from DER, 46' right of centerline, up to 100' AGL/125' MSL.

Obstruction light on levee 189' from DER, on centerline to 154' right of centerline, up to 22' AGL/45' MSL. **Rwy 20**, levee 56' from DER, 453' left of centerline, up to 24' AGL/42' MSL. Trees and bushes beginning 160' from DER, 118' left of centerline, up to 100' AGL/119' MSL. Obstruction light on dike beginning 493' from DER, 277' left of centerline, up to 27' AGL/45' MSL. Spires 1.12 NM from DER, 403' left of centerline, 150' AGL/195' MSL. Lights beginning 196' from DER, 400' right of centerline, up to 24' AGL/42' MSL. Trees beginning 798' from DER, 28' right of centerline, up to 100' AGL/142' MSL. Dam 885' from DER, 52' left of centerline, 27' AGL/45' MSL.

**HAVERHILL, NH**

DEAN MEMORIAL (5B9)

ORIG 07074 (FAA)

TAKE-OFF MINIMUMS: **Rwy 1**, std. w/min. climb of 339' per NM to 2000, or 1800-2 for climb in visual conditions. **Rwy 19**, NA terrain.

DEPARTURE PROCEDURE: **Rwy 1**, climbing left turn heading 240° and LEB VOR/DME R-029 to 4800 before proceeding on course. Do not exceed 180 KIAS until established on LEB VOR/DME R-029. For climb in visual conditions: Cross Dean Memorial Airport southwest bound at or above 2200 via LEB VOR/DME R-036 to 5000 before proceeding on course. Do not exceed 180 KIAS until established on LEB VOR/DME R-036.

NOTE: **Rwy 1**, multiple buildings beginning 180' from departure end of runway, 74' left of centerline, up to 25' AGL/571' MSL. Building 300' from departure end of runway, 100' right of centerline, 35' AGL/584' MSL. Vehicles at departure end of runway, beginning 500' right of centerline, to 500' left of centerline 15' AGL/596' MSL. Multiple trees beginning 1450' from departure end of runway left and right of centerline, up to 100' AGL/599' MSL. Multiple trees beginning 1.3 NM from departure end of runway left and right of centerline, up to 100' AGL/819' MSL. Multiple trees and towers beginning 1.7 NM from departure end of runway left and right of centerline, up to 200' AGL/919' MSL.

**HIGHGATE, VT**

FRANKLIN COUNTY STATE (FSO)

AMDT 1 11181 (FAA)

TAKE-OFF MINIMUMS: **Rwy 19**, 500-2¾ or std. w/min. climb of 316' per NM to 800.

DEPARTURE PROCEDURE: **Rwy 19**, climbing right turn heading 240° to 1700 before turning east.

NOTE: **Rwy 1**, vehicles on road beginning at DER, 459' left of centerline, up to 15' AGL/234' MSL. Trees beginning 182' from DER, 47' right of centerline, up to 100' AGL/359' MSL. Trees beginning 454' from DER, 20' left of centerline, up to 100' AGL/289' MSL. **Rwy 19**, vehicles on road beginning 1' from DER, 240' right of centerline, up to 15' AGL/240' MSL. Trees beginning 215' from DER, 313' right of centerline, up to 90' AGL/309' MSL. Trees beginning 628' from DER, 660' left of centerline, up to 62' AGL/281' MSL. Pole 688' from DER, 656' left of centerline, 43' AGL/262' MSL. Catenary 1299' from DER, 734' left of centerline, 44' AGL/263' MSL.

**HOPEDALE, MA**

HOPEDALE INDUSTRIAL PARK (1B6)

AMDT 2 95341 (FAA)

TAKE-OFF MINIMUMS: **Rwy 18**, 300-1 or std. with a min. climb of 320' per NM to 900. **Rwy 36**, 600-1 or std. with a min. climb of 280' per NM to 1100.

DEPARTURE PROCEDURE: **Rwy 18**, climb runway heading to 900 before turning on course. **Rwy 36**, climb runway heading to 1100 before turning on course.

31 MAY 2012 to 28 JUN 2012

31 MAY 2012 to 28 JUN 2012

12152



## TAKE-OFF MINIMUMS AND (OBSTACLE) DEPARTURE PROCEDURES



NE-1



## TAKE-OFF MINIMUMS AND (OBSTACLE) DEPARTURE PROCEDURES



12152

**HOULTON, ME**

HOULTON INTL (HUL)

AMDT 2 11237 (FAA)

TAKE-OFF MINIMUMS: **Rwy 1**, 300-1½ or std. w/min. climb of 429' per NM to 900. **Rwy 5**, 300-1½ or std. with min. climb of 340' per NM to 900. **Rwy 19**, 500-3. **Rwy 23**, 400-1½ or std. w/min. climb of 389' per NM to 1000.

DEPARTURE PROCEDURE: **Rwy 23**, Climb heading 229° to 1000 before turning left.

NOTE: **Rwy 1**, trees beginning 109' from DER, 170' left of centerline, up to 100' AGL/739' MSL. Tree 141' from DER, 241' right of centerline, 100' AGL/579' MSL. Vehicle on roadway 520' from DER, 7' left of centerline, 15' AGL/494' MSL. **Rwy 5**, trees beginning 144' from DER, 155' left of centerline, up to 100' AGL/599' MSL. Trees beginning 432' from DER, 557' right of centerline, up to 100' AGL/779' MSL. **Rwy 19**, trees beginning 2331' from DER, 610' left of centerline, up to 100' AGL/939' MSL. Trees beginning 2580' from DER, 414' right of centerline, up to 100' AGL/949' MSL. **Rwy 23**, trees beginning 427' from DER, 411' left of centerline, up to 100' AGL/829' MSL. Trees beginning 52' from DER, 309' right of centerline, up to 100' AGL/619' MSL.

**HYANNIS, MA**

BARNSTABLE MUNI-BOARDMAN/POLANDO

FIELD (HYA)

AMDT 3A 08269 (FAA)

TAKE-OFF MINIMUMS: **Rwy 33**, 300-1 or std. with a min. climb of 354' per NM to 300.

DEPARTURE PROCEDURE: **Rwys 24,33**, climb runway heading to 700 before proceeding on course.

NOTE: **Rwy 33**, pole 3961' from departure end of runway, 1531' right of centerline, 97' AGL/235' MSL.

**JAFFREY, NH**

JAFFREY AIRPORT-SILVER RANCH (AFN)

ORIG 83118 (FAA)

TAKE-OFF MINIMUMS: **Rwys 16, 34**, 500-1.

DEPARTURE PROCEDURE: **Rwy 16**, climb to 3000 direct to GDM VOR/DME before proceeding on course. **Rwy 34**, climbing right turn to 3000 direct to GDM VOR/DME before proceeding on course.

**KEENE, NH**

DILLANT-HOPKINS (EEN)

AMDT 5 97282 (FAA)

TAKE-OFF MINIMUMS: **Rwy 2**, 1200-2. **Rwy 14**, 2200-2 or std. with a min. climb of 450' per NM to 2500. **Rwy 20**, 1000-2 or std. with a min. climb of 320' per NM to 1700. **Rwy 32**, 1600-2.

DEPARTURE PROCEDURE: **Rwy 2**, climb runway heading to 2100, then climbing left turn to assigned altitude direct EEN VORTAC before proceeding on course. **Rwy 14**, climb runway heading to 2500, then climbing right turn to assigned altitude direct EEN VORTAC before proceeding on course. **Rwy 20**, climb direct EEN VORTAC until passing 3000, if not at 3000 or above at EEN VORTAC climb in EEN holding pattern; (NE, right turns, 215° inbound) before proceeding on course. **Rwy 32**, climbing right turn heading 350° to 2100, then climbing left turn to assigned altitude direct EEN VORTAC before proceeding on course.

NOTE: **Rwy 2**, 81' AGL trees 400' from departure end of runway and 500' right of centerline. **Rwy 32**, 89' AGL trees 800' from departure end of runway and 600' right of centerline.

**LACONIA, NH**

LACONIA MUNI (LCI)

AMDT 4 09127 (FAA)

TAKE-OFF MINIMUMS: **Rwy 8**, 600-1½ or std. w/min. climb of 652' per NM to 1300. **Rwy 26**, 300-1 or std. w/min. climb of 421' per NM to 900.

DEPARTURE PROCEDURE: **Rwy 8**, climb to 2500 via heading 079° and ENE VORTAC R-315 inbound to 3500 before proceeding on course. **Rwy 26**, climb heading 264° to 2500 before proceeding on course.

NOTE: **Rwy 8**, trees, terrain, and pole beginning 65' from DER, 20' right of centerline, up to 50' AGL/1112' MSL. Trees and terrain beginning 93' from DER, 5' left of centerline, up to 71' AGL/590' MSL. **Rwy 26**, trees and antenna on tower beginning 123' from DER, 42' left of centerline, up to 84' AGL/743' MSL. Trees beginning 2145' from DER, 626' right of centerline, up to 93' AGL/672' MSL.

**LAWRENCE, MA**

LAWRENCE MUNI (LWM)

AMDT 4 11069 (FAA)

TAKE-OFF MINIMUMS: **Rwy 5**, 300-1½ or std. with a min. climb of 419' per NM to 500. **Rwy 14**, 300-1 or std. with a min. climb of 601' per NM to 600. **Rwy 23**, 300-1 or std. with a min. climb of 334' per NM to 400.

DEPARTURE PROCEDURE: **Rwy 5**, Climb heading 053° to 1100 before turning left.

NOTE: **Rwy 5**, trees beginning 288' from DER, 44' left of centerline, up to 86' AGL/282' MSL. Pole and trees beginning 544' from DER, 403' right of centerline, up to 75' AGL/281' MSL. Trees 3731' from DER, 1052' right of centerline, up to 86' AGL/331' MSL. Trees 1.2 NM from DER, 41' right of centerline, up to 89' AGL/354' MSL. **Rwy 14**, bush, pole, and trees beginning 150' from DER, 9' left of centerline, up to 59' AGL/186' MSL. Bush, buildings, poles, and trees beginning 102' from DER, 19' right of centerline, up to 94' AGL/290' MSL. Rod on pole 3473' from DER, 1391' right of centerline, 73' AGL/417' MSL. **Rwy 23**, bush and trees beginning 176' from DER, 464' left of centerline, up to 53' AGL/160' MSL. Bush 117' from DER, 183' right of centerline, up to 13' AGL/140' MSL. Stack 3768' from DER, 1310' right of centerline, 260' AGL/295' MSL. **Rwy 32**, trees 159' from DER, 198' left of centerline, up to 54' AGL/141' MSL. Trees beginning 120' from DER, 156' right of centerline, up to 60' AGL/177' MSL.

31 MAY 2012 to 28 JUN 2012

31 MAY 2012 to 28 JUN 2012

12152



## TAKE-OFF MINIMUMS AND (OBSTACLE) DEPARTURE PROCEDURES



NE-1



## TAKE-OFF MINIMUMS AND (OBSTACLE) DEPARTURE PROCEDURES



12152

## LEBANON, NH

LEBANON MUNI (LEB)

AMDT 2 09015 (FAA)

TAKE-OFF MINIMUMS: **Rwy 7**, 300-1 w/ min. climb of 380' per NM to 3100, or 2000-3 for climb in visual conditions. **Rwy 18**, std. w/ min. climb of 380' per NM to 3800, or 2000-3 for climb in visual conditions. **Rwy 25**, std. w/ min. climb of 380' per NM to 3100, or 2000-3 for climb in visual conditions. **Rwy 36**, std. w/ min. climb of 350' per NM to 1800, or 2000-3 for climb in visual conditions.

DEPARTURE PROCEDURE: **Rwy 7**, climb heading 075° to 1900 before proceeding on course. **Rwy 18**, climb heading 184° to 3100 before proceeding on course. **Rwy 25**, climb heading 255° to 3100 before proceeding on course. **Rwy 36**, climb heading 004° to 1800 before proceeding on course. **Rwys 7, 18, 25, 36**, - for climb in visual conditions: cross Lebanon Muni airport at or above 2500 before proceeding on course.

NOTE: **Rwy 7**, numerous trees beginning 104' from departure end of runway, 255' right of centerline up to 112' AGL/752' MSL. Pole 505' from departure end of runway, 391' right of centerline, 72' AGL/672' MSL. Bush 426' from departure end of runway, 259' right of centerline, 9' AGL/589' MSL. Multiple trees beginning 13' from departure end of runway, 209' left of centerline, up to 100' AGL/1100' MSL. **Rwy 18**, numerous trees, and obstruction light poles beginning 288' from departure end of runway, 107' right of centerline, up to 100' AGL/784' MSL. Numerous trees and obstruction light poles beginning 433' from departure end of runway, 206' left of centerline, up to 82' AGL/962' MSL. Bush 216' from departure end of runway, 471' right of centerline, 16' AGL/619' MSL. **Rwy 25**, multiple trees beginning 340' from departure end of runway, 400' left of centerline, up to 91' AGL/871' MSL. Tree 382' from departure end of runway, 502' right of centerline, 91' AGL/581' MSL. **Rwy 36**, multiple trees beginning 243' from departure end of runway, 355' left of centerline, up to 81' AGL/581' MSL. Pole 155' from departure end of runway, 505' left of centerline, 30' AGL/590' MSL. Tree 357' from departure end of runway, 511' right of centerline, 83' AGL/583' MSL.

## LINCOLN, ME

LINCOLN RGNL (LRG)

AMDT 3 10210 (FAA)

TAKE-OFF MINIMUMS: **Rwy 17**, 700-1½ with a minimum climb of 389' per NM to 1100 or 1100-2½ for climb in visual conditions. **Rwy 35**, 300-1 or std. w/ min. climb of 453' per NM to 500.

DEPARTURE PROCEDURE: **Rwy 17**, climb heading 181° to 1100 before proceeding on course. For climb in visual conditions, cross Lincoln Rgnl airport at or above 1200 MSL before proceeding on course. **Rwy 35**, climb heading 346° to 700 before proceeding on course.

NOTE: **Rwy 17**, trees beginning 123' from DER, 296' left of centerline, up to 80' AGL/299' MSL. Trees beginning 447' from DER, 126' right of centerline, up to 80' AGL/289' MSL. Towers beginning 7448' from DER, 2310' left of centerline, up to 191' AGL/869' MSL. **Rwy 35**' trees beginning 4' from DER, 284' left of centerline, up to 80' AGL/359' MSL. Trees beginning 252' from DER, 196' right of centerline, up to 80' AGL/369' MSL.

## LYNDONVILLE, VT

CALEDONIA COUNTY (CDA)

AMDT 5 07018 (FAA)

TAKE-OFF MINIMUMS: **Rwy 2**, 500-2.

DEPARTURE PROCEDURE: **Rwy 2**, climb heading 024° to 2500, then climbing right turn via heading 190° and LLX bearing 040° to LLX NDB, then via LLX NDB 220° bearing to 4200 before proceeding on course. **Rwy 20**, climb heading 190°; then climbing left turn on 165° bearing from LLX NDB to 3400 before proceeding on course.

NOTES: **Rwy 2**, multiple trees beginning 795' from departure end of runway, 361' left of centerline, up to 80' AGL/1536' MSL. Terrain 184' from departure end of runway, 533' left of centerline, 1200' MSL. Terrain 346' from departure end of runway, 578' left of centerline, 1220' MSL. Terrain 550' from departure end of runway, 638' left of centerline, 1240' MSL. **Rwy 20**, multiple trees beginning 2' from departure end of runway, 174' right of centerline, up to 80' AGL/1261' MSL. Terrain 470' from departure end of runway, 75' left of centerline, 1200' MSL.

## MACHIAS, ME

MACHIAS VALLEY (MVM)

AMDT 1 04162 (FAA)

TAKE-OFF MINIMUMS: **Rwy 18**, 400-2 or std. with a min. climb of 350' per NM to 700. **Rwy 36**, 400-2 or std. with a min. climb of 370' per NM to 600.

NOTE: **Rwy 18**, numerous terrain/trees right and left of runway centerline within 8000' from departure end of runway, up to 100' AGL/479' MSL. **Rwy 36**, numerous terrain/trees left and right of runway centerline within 15000' of departure end of runway, up to 100' AGL/439' MSL. Tower 7929' from departure end of runway 883' left of centerline, 85' AGL/403' MSL.

## MANCHESTER, NH

MANCHESTER (MHT)

AMDT 10 12152 (FAA)

TAKE-OFF MINIMUMS: **Rwy 17**, 300-1½ or std. w/ min. climb of 277' per NM to 600. **Rwy 35**, 300-1½ or std. w/ min. climb of 253' per NM to 500.

DEPARTURE PROCEDURE: **Rwy 6**, climb heading 058° to 1000 before turning right. **Rwy 24**, climb heading 245° to 900 before proceeding on course. **Rwy 35**, climb heading 353° to 1300 before proceeding on course.

NOTE: **Rwy 6**, pole and trees beginning 67' from DER, 162' left of centerline, up to 107' AGL/313' MSL. Fence and trees beginning 6' from DER, 90' right of centerline, up to 72' AGL/272' MSL. **Rwy 17**, buildings and trees beginning 1792' from DER, 54' left of centerline, up to 107' AGL/418' MSL. Transmission line tower, poles, buildings, and trees beginning 761' from DER, 4' right of centerline, up to 90' AGL/418' MSL. Pole 5563' from DER, 92' left of centerline, 57' AGL/457' MSL. **Rwy 24**, pole and trees beginning 221' from DER, 243' left of centerline, up to 119' AGL/293' MSL. Trees beginning 2556' from DER, 1041' right of centerline, up to 101' AGL/313' MSL. **Rwy 35**, pole and trees beginning 891' from DER, 527' left of centerline, up to 76' AGL/320' MSL. Poles and trees beginning 719' from DER, 558' right of centerline, up to 44' AGL/281' MSL. Trees 5933' from DER, 1950' left of centerline, up to 76' AGL/409' MSL. Trees 1 NM from DER, 1581' left of centerline, up to 60' AGL/414' MSL. Trees 1.2 NM from DER, 1946' left of centerline, up to 85' AGL/407' MSL.

31 MAY 2012 to 28 JUN 2012

31 MAY 2012 to 28 JUN 2012

12152



## TAKE-OFF MINIMUMS AND (OBSTACLE) DEPARTURE PROCEDURES



NE-1



## TAKE-OFF MINIMUMS AND (OBSTACLE) DEPARTURE PROCEDURES



12152

**MANSFIELD, MA**

MANSFIELD MUNI (1B9)

AMDT 2 96228 9FAA)

TAKE-OFF MINIMUMS: **Rwy 32**, 300-1. **Rwys 4,22**, NA.**MARSHFIELD, MA**

MARSHFIELD MUNI-GEORGE HARLOW FIELD (GHG)

ORIG 07242 (FAA)

TAKE-OFF MINIMUMS: **Rwy 24**, 300-2½ or std. w/ min. climb of 234' per NM to 400.

NOTE: **Rwy 6**, multiple trees beginning 715' from departure end of runway, 163' left of centerline, up to 60' AGL/69' MSL, boat mast 2608' from departure end of runway on centerline, 125' AGL/125' MSL. **Rwy 24**, multiple trees beginning 221' from departure end of runway, 541' left of centerline, up to 60' AGL/69' MSL, trees beginning 810' from departure end of runway, 26' right of centerline, up to 60' AGL/69' MSL, multiple trees beginning 3077' from departure end of runway, 1022' left of centerline, up to 200' AGL/299' MSL, multiple trees beginning 9899' from departure end of runway, 493' left of centerline, up to 200' AGL/289' MSL, multiple trees beginning 1039' from departure end of runway, 1177' right of centerline, 200' AGL/299' MSL.

**MERIDEN, CT**

MERIDEN MARKHAM MUNI (MMK)

AMDT 3 07046 (FAA)

TAKE-OFF MINIMUMS: **Rwy 18**, 500-3 or std. w/ min. climb of 235' per NM to 1100. **Rwy 36**, std. w/ min. climb of 420' per NM to 1600, or 1500-2½ for climb in visual conditions.

DEPARTURE PROCEDURE: **Rwy 18**, climb heading 176° to 1100 before proceeding on course. **Rwy 36**, climbing left turn heading 320° to 1600 before proceeding on course, or for climb in visual conditions, cross Meriden Markham Municipal at or above 1500 before proceeding on course.

NOTE: **Rwy 18**, 200' AAO 1.9 NM from departure end of runway, 3441' left of centerline, 200' AGL/417' MSL. 200' AAO 1.9 NM from departure end of runway, 3563' left of centerline, 200' AGL/417' MSL. Terrain 50' from departure end of runway, 440' right of centerline, 109' MSL. 200' AAO 1.9 NM from departure end of runway, 3346' left of centerline, 200' AGL/410' MSL. Terrain 122' from departure end of runway, 223' right of centerline, 105' MSL. 200' AAO 2.5 NM from departure end of runway, 1984' left of centerline, 200' AGL/483' MSL. 200' AAO 2.5 NM from departure end of runway, 1889' left of centerline, 200' AGL/489' MSL. Multiple powerlines beginning 500' from departure end of runway, 216' right of centerline, up to 52' AGL/172' MSL. Multiple powerlines beginning 781' from departure end of runway, 192' left of centerline, up to 52' AGL/150' MSL. **Rwy 36**, multiple towers 3 NM from departure end of runway, 2284' right of centerline, up to 1117' AGL/1220' MSL. Multiple terrain/AAO 2.5 NM from departure end of runway, 3748' right of centerline, up to 200' AGL/903' MSL.

**MILLINOCKET, ME**

MILLINOCKET MUNI (MLT)

AMDT 3 10042 (FAA)

TAKE-OFF MINIMUMS: **Rwy 29**, 400-3 or std. w/ min. climb of 535' per NM to 1000.

**Rwy 34**, 400-2½ or std. w/ min. climb of 351' per NM to 900.

DEPARTURE PROCEDURE: **Rwy 11**, climb via heading 107° and MLT R-330 to MLT VOR/DME thence... **Rwy 16**, climb via heading 156° and MLT R-309 to MLT VOR/DME thence... **Rwy 29**, climb via heading 287° to 1000 then climbing left turn via heading 152° and MLT R-290 to MLT VOR/DME thence... **Rwy 34**, climbing right turn via heading 156° and MLT R-344 to MLT VOR/DME thence...

...continue climb in MLT VOR/DME holding pattern (Southeast, Right Turns, 319° inbound) to cross MLT VOR/DME at or above 3000 before proceeding on course.

NOTE: **Rwy 11**, bushes beginning 82' from DER, 25' left of centerline, up to 16' AGL/406' MSL. Trees beginning 49' from DER, 258' left of centerline, up to 100' AGL/489' MSL. Trees beginning 52' from DER, 247' right of centerline, up to 100' AGL/489' MSL. Trees beginning 1685' from DER, left and right of centerline, up to 100' AGL/519' MSL. **Rwy 16**, vehicle 311' from DER, left and right of centerline, 15' AGL/393' MSL. Trees beginning 84' from DER, 272' left of centerline, up to 64' AGL/444' MSL. Trees beginning 20' from DER, 247' right of centerline, up to 66' AGL/436' MSL. Trees beginning 791' from DER, left and right of centerline, up to 100' AGL/489' MSL. **Rwy 29**, antenna, towers, powerlines, and stacks beginning 294' from DER, 250' left of centerline, up to 302' AGL/782' MSL. Obstacle light on localizer, antenna, and powerlines beginning 301' from DER, 1' right of centerline, up to 114' AGL/584' MSL. Trees beginning 300' from DER, 395' left of centerline, up to 62' AGL/452' MSL. Trees beginning 705' from DER, 237' right of centerline, up to 78' AGL/678' MSL. **Rwy 34**, trees beginning 28' from DER, 249' right of centerline, up to 113' AGL/729' MSL. Trees beginning 261' from DER, 317' left of centerline, up to 67' AGL/457' MSL. Tower 11162' from DER, 470' right of centerline, 310' AGL/708' MSL.

**MONTAGUE, MA**

TURNERS FALLS (0B5)

AMDT 1 97002 (FAA)

TAKE-OFF MINIMUMS: **Rwy 16**, 1200-1. **Rwy 34**, 1300-1 or std. with a min. climb rate of 370' per NM to 1900.

**MORRISVILLE, VT**

MORRISVILLE-STOWE STATE (MVL)

AMDT 2A 11125 (FAA)

TAKE-OFF MINIMUMS: **Rwy 1**, 2000-2 or std. with a min. climb of 300' per NM to 2400. **Rwy 19**, 2100-3.

DEPARTURE PROCEDURE: **Rwy 1**, climbing right turn direct JRV NDB, continue climb to 2400 via the JRV bearing 050°; then climbing right turn direct to JRV NDB, continue climb in hold (NE, left turns, 230° inbound) to 4000 before proceeding on course.

**Rwy 19**, climbing right turn direct JRV NDB and climb in the hold (NE, left turns, 230° inbound) to 4000 before proceeding on course.

NOTE: TAKE-OFF MINIMUMS restricted to CAT A & B aircraft only.

31 MAY 2012 to 28 JUN 2012

31 MAY 2012 to 28 JUN 2012

12152



## TAKE-OFF MINIMUMS AND (OBSTACLE) DEPARTURE PROCEDURES



NE-1



## TAKE-OFF MINIMUMS AND (OBSTACLE) DEPARTURE PROCEDURES



12152

**NANTUCKET, MA**

NANTUCKET MEMORIAL (ACK)

AMDT 3 98281 (FAA)

TAKE-OFF MINIMUMS: **Rwy 12**, 700-1 or std. with a min. climb of 330' per NM to 800.DEPARTURE PROCEDURE: **Rwys 6,12,15,24,30,33**, climb runway heading to 800 before proceeding on course.NOTE: **Rwy 33**, 70' AGL ant. on building 954' from departure end of runway, 585' right of centerline.**NASHUA, NH**

BOIRE FIELD (ASH)

AMDT 2 07298 (FAA)

DEPARTURE PROCEDURE: **Rwy 32**, climb heading 319° to 900 before proceeding on course.NOTE: **Rwy 14**, REIL, multiple poles, and multiple trees beginning 18' from departure end of runway, 60' left of centerline, up to 99' AGL/289' MSL. Pole, REILS, and multiple trees beginning 20' from departure end of runway, 97' right of centerline, up to 89' AGL/283' MSL. **Rwy 32**, multiple trees beginning 340' from departure end of runway, 249' left of centerline, up to 87' AGL/296' MSL. Multiple trees beginning 1694' from departure end of runway, 191' right of centerline, up to 87' AGL/295' MSL.**NEW BEDFORD, MA**

NEW BEDFORD RGNL (EWB)

AMDT 7 99028 (FAA)

TAKE-OFF MINIMUMS: **Rwy 14**, 300-1 or std. with a min. climb of 280' per NM to 300. **Rwy 32**, 300-1 or std. with a min. climb of 270' per NM to 300.**NEW HAVEN, CT**

TWEED-NEW HAVEN (HVN)

AMDT 6 12012 (FAA)

TAKE-OFF MINIMUMS: **Rwy 2**, 300-1 w/min. climb of 340' per NM to 400. **Rwy 32**, 400-1½ or std. w/min. climb of 465' per NM to 600.DEPARTURE PROCEDURE: **Rwy 2**, climb heading 016° to 1900 before turning left. **Rwy 32**, climb heading 324° to 1500 before turning right.NOTE: **Rwy 2**, transmission line towers beginning 846' from DER, 356' left of centerline, up to 35' AGL/65' MSL. Building 124' from DER, 525' right of centerline, 53' AGL/64' MSL. Trees 1276' from DER, 817' left of centerline, up to 80' AGL/239' MSL. Trees 3755' from DER, 1494' left of centerline, up to 80' AGL/289' MSL. **Rwy 14**, terrain, buildings, and poles beginning 777' from DER, 5' left of centerline, up to 31' AGL/69' MSL. Terrain, vehicles on road, tower, buildings, and poles beginning 429' from DER, 143' right of centerline, up to 58' AGL/94' MSL. **Rwy 20**, pole 68' from DER, 498' right of centerline, 16' AGL/42' MSL. **Rwy 32**, pole and trees beginning 1121' from DER, 55' left of centerline, up to 80' AGL/149' MSL. Control tower, poles, and trees beginning 617' from DER, 139' right of centerline, up to 80' AGL/149' MSL. Trees 2777' from DER, 1143' right of centerline, up to 80' AGL/169' MSL. Stack 1.1 NM from DER, 2227' right of centerline, 394' AGL/404' MSL.**NEWPORT, RI**

NEWPORT STATE (UUU)

AMDT 3 07354 (FAA)

TAKE-OFF MINIMUMS: **Rwy 4**, 300-2¼ or std. with a min. climb of 230' per NM to 600, or alternatively, with standard takeoff minimums and a normal 200'/NM climb gradient, takeoff must occur no later than 2100' prior to departure end of runway. **Rwy 16**, 200-1 or std. w/min. climb of 430' per NM to 400.DEPARTURE PROCEDURE: **Rwy 4**, climb heading 039° to 1200 before proceeding on course.NOTE: **Rwy 4**, trees beginning 1.7 NM from departure end of runway, 916' right of centerline, up to 100' AGL/459' MSL. **Rwy 16**, tower 3782' from departure end of runway, 666' right of centerline, 100' AGL/285' MSL, tower 4203' from departure end of runway, 1100' right of centerline, 132' AGL/310' MSL. **Rwy 34**, terrain 102' from departure end of runway, 424' right of centerline, 159' MSL, vehicle on road 726' from departure end of runway, 602' right of centerline.**NEWPORT, VT**

NEWPORT STATE (EFK)

AMDT 3 11153 (FAA)

TAKE-OFF MINIMUMS: **Rwy 18**, std. w/min. climb of 470' per NM to 2500 or 300-1 with min. climb of 350' per NM to 3000 or 2300-3 for climb in visual conditions. **Rwy 23**, std. w/min. climb of 320' per NM to 3200 or 2300-3 for climb in visual conditions. **Rwy 36**, std. w/min. climb of 320' per NM to 3300 or 2300-3 for climb in visual conditions.DEPARTURE PROCEDURE: **Rwy 5**, climb heading 047° to 2200 before proceeding on course. **Rwy 18**, climb heading 177° to 3000 before proceeding on course or for climb in visual conditions: cross Newport State Airport at or above 3100 before proceeding on course. **Rwy 23**, climb heading 227° to 3000 before proceeding on course or for climb in visual conditions: cross Newport State Airport at or above 3100 before proceeding on course. **Rwy 36**, climb heading 357° to 3300 before proceeding on course or for climb in visual conditions: cross Newport State Airport at or above 3100 before proceeding on course.NOTE: **Rwy 5**, vehicles on access road beginning 168' from DER, 232' left of centerline, up to 10' AGL/954' MSL. Vehicles on road beginning 216' from DER, 530' right of centerline, up to 15' AGL/940' MSL. Poles beginning 249' from DER, 85' right of centerline, up to 43' AGL/952' MSL. **Rwy 18**, trees beginning at DER, left and right of centerline, up to 100' AGL/1103' MSL. Trees beginning 1.4 NM from DER, 2704' right of centerline, up to 100' AGL/1142' MSL. **Rwy 23**, trees beginning at DER, left and right of centerline, up to 100' AGL/1024' MSL. Rising terrain beginning 6.3 NM from DER, 1.8 NM right of centerline, up to 2381' MSL. **Rwy 36**, trees beginning 1897' from DER, 613' left of centerline, up to 100' AGL/1044' MSL. Trees beginning 2962' from DER, 377' right of centerline, up to 100' AGL/1044' MSL. Trees beginning 5850' from DER, 2049' left of centerline, up to 100' AGL/1123' MSL. Rising terrain beginning 3.3 NM from DER, 3031' left of centerline, up to 1515' MSL.

31 MAY 2012 to 28 JUN 2012

31 MAY 2012 to 28 JUN 2012

12152



## TAKE-OFF MINIMUMS AND (OBSTACLE) DEPARTURE PROCEDURES



NE-1



## TAKE-OFF MINIMUMS AND (OBSTACLE) DEPARTURE PROCEDURES



12152

**NORRIDGEWOCK, ME**

CENTRAL MAINE AIRPORT OF  
NORRIDGEWOCK (OWK)  
AMDT 3 1181 (FAA)

TAKE-OFF MINIMUMS: **Rwy 3**, 300-1½ or std. w/min. climb of 210' per NM to 500, or alternatively, with standard takeoff minimums and a normal 200' per NM climb gradient, takeoff must occur no later than 1300' prior to DER. **Rwy 21**, std. w/min. climb of 282' per NM to 1000 or 1400-2½ for climb in visual conditions.

**Rwy 15**, std. w/min. climb of 231' per NM to 1100 or 1400-2½ for climb in visual conditions.

DEPARTURE PROCEDURE: **Rwy 3**, climb heading 028° to 1200 before turning left. **Rwy 21**, climb heading 208° to 1000 before proceeding on course or for climb in visual conditions: cross Central Maine Airport of Norridgewock at or above 1500 before proceeding on course. **Rwy 15**, climb heading 148° to 1100 before proceeding on course or for climb in visual conditions: cross Central Maine Airport of Norridgewock at or above 1500 before proceeding on course. **Rwy 33**, climbing right turn to 1900 direct AUG VOR/DME before proceeding on course.

NOTE: **Rwy 3**, trees beginning 75' from DER, 498' right of centerline, up to 100' AGL/439' MSL. Trees beginning 766' from DER, 640' left of centerline, up to 100' AGL/349' MSL. **Rwy 21**, trees 1816' from DER, 696' right of centerline, up to 100' AGL/369' MSL. Trees 3047' from DER, 901' left of centerline, up to 100' AGL/409' MSL. **Rwy 15**, trees beginning 220' from DER, 513' right of centerline, up to 100' AGL/359' MSL. Trees beginning 330' from DER, 453' left of centerline, up to 100' AGL/359' MSL. **Rwy 33**, trees beginning 393' from DER, 536' right of centerline, up to 100' AGL/379' MSL. Trees beginning 691' from DER, 193' left of centerline, up to 100' AGL/379' MSL.

**NORTH KINGSTOWN, RI**

QUONSET STATE (OJ)  
ORIG 99308 (FAA)

TAKE-OFF MINIMUMS: **Rwy 5**, 300-1 or std. with a min. climb of 320' per NM to 300. **Rwy 16**, 300-1 or std. with a min. climb of 250' per NM to 300.

**NORTHAMPTON, MA**

NORTHAMPTON (7B2)  
AMDT 4 11013 (FAA)

TAKE-OFF MINIMUMS: **Rwy 14**, 1500-2½ for climb in visual conditions. **Rwy 32**, std. w/min. climb of 286' per NM to 2000.

DEPARTURE PROCEDURE: **Rwy 14**, for climb in visual conditions: cross Northampton Airport at or above 1500 before proceeding on course. **Rwy 32**, climb heading 323° to 2000 before proceeding on course.

NOTE: **Rwy 14**, vehicle on road 5' from DER, 178' right of centerline, up to 17' AGL/136' MSL. Vehicle on road 35' from DER, 143' left of centerline, up to 17' AGL/136' MSL. Trees beginning 984' from DER, 476' left of centerline, up to 100' AGL/219' MSL. Numerous trees beginning 1.2 NM from DER, 1556' left and right of centerline, upsloping on Holyoke range, up to 100' AGL/909' MSL. **Rwy 32**, vehicle on road 256' from DER, up to 17' AGL/136' MSL. Building 176' from DER, 169' right of centerline 25' AGL/144' MSL. Trees beginning 85' from DER, 462' left of centerline, up to 100' AGL/219' MSL. Vehicle on road 1638' from DER, 116' left of centerline, 17' AGL/176' MSL.

**NORWOOD, MA**

NORWOOD MEMORIAL (OWD)  
AMDT 6 11069 (FAA)

TAKE-OFF MINIMUMS: **Rwy 10**, 300-2 ½ or std. w/min. climb of 340' per NM to 500. **Rwy 17**, 300-2 ½ or std. w/min. climb of 220' per NM to 500, or alternatively, with standard takeoff minimums and a normal 200' per NM climb gradient, takeoff must occur no later than 1600' prior to DER. **Rwy 28**, 400-2 or std. w/min. climb of 385' per NM to 500. **Rwy 35**, 400-2 ½ or std. w/min. climb of 230' per NM to 500, or alternatively, with standard takeoff minimums and a normal 200' per NM climb gradient, takeoff must occur no later than 2100' prior to DER.

DEPARTURE PROCEDURE: **Rwy 10**, climb heading 104° to 1100 before turning north. **Rwy 28**, climb heading 284° to 700 before turning north. **Rwy 35**, climb heading 335° to 1900 before turning east.

NOTE: **Rwy 10**, trees beginning 184' from DER, 34' left of centerline, up to 77' AGL/124' MSL. Bushes and trees beginning 75' from DER, 177' right of centerline, up to 71' AGL/118' MSL. Trees 4488' from DER, 910' right of centerline, up to 100' AGL/237' MSL. Trees 1.9 NM from DER, 2124' left of centerline, up to 100' AGL/346' MSL. **Rwy 17**, trees beginning 42' from DER, 248' left of centerline, up to 79' AGL/126' MSL. Trees beginning 611' from DER, 616' right of centerline, up to 77' AGL/124' MSL. Trees 1.4 NM from DER, 2182' left of centerline, up to 100' AGL/257' MSL. Trees 2.1 NM from DER, 3301' right of centerline, up to 100' AGL/346' MSL. **Rwy 28**, electrical system, building, and trees beginning 593' from DER, 41' left of centerline, up to 71' AGL/188' MSL. Building, pole, and trees beginning 549' from DER, 48' right of centerline, up to 82' AGL/170' MSL. Tower 4465' from DER, 238' right of centerline, 157' AGL/262' MSL. Trees 1.7 NM from DER, 672' right of centerline, up to 100' AGL/365' MSL. **Rwy 35**, trees beginning 647' from DER, 35' left of centerline, up to 75' AGL/133' MSL. Trees beginning 694' from DER, 60' right of centerline, up to 78' AGL/125' MSL. Trees 1.7 NM from DER, 2381' left of centerline, up to 100' AGL/306' MSL. Spire 1.8 NM from DER, 5232' left of centerline, 96' AGL/364' MSL.

**OLD TOWN, ME**

DEWITT FIELD OLD TOWN MUNI (OLD)  
ORIG 07270 (FAA)

NOTE: **Rwy 4**, trees beginning 61' from departure end of runway, 337' right of centerline, up to 80' AGL/239' MSL. Trees beginning 281' from departure end of runway 363' left of centerline, up to 80' AGL/199' MSL. **Rwy 12**, trees beginning 338' from departure end of runway, 33' right of centerline, up to 80' AGL/259' MSL. **Rwy 22**, trees beginning 223' from departure end of runway, 296' left of centerline, up to 80' AGL/239' MSL. Trees beginning 514' from departure end of runway, 184' right of centerline, up to 80' AGL/209' MSL. **Rwy 30**, trees beginning 952' from departure end of runway, 55' left of centerline, up to 80' AGL/199' MSL.

31 MAY 2012 to 28 JUN 2012

31 MAY 2012 to 28 JUN 2012

12152



## TAKE-OFF MINIMUMS AND (OBSTACLE) DEPARTURE PROCEDURES



NE-1



## TAKE-OFF MINIMUMS AND (OBSTACLE) DEPARTURE PROCEDURES



12152

## ORANGE, MA

ORANGE MUNI (ORE)

AMDT 1 12152 (FAA)

TAKE-OFF MINIMUMS: **Rwy 1**, std. w/min. climb of 325' per NM to 1800 or 1300-2½ for climb in visual conditions. **Rwy 14**, 400-1½ w/min. climb of 270' per NM to 1800 or std. w/min. climb of 500' per NM to 1200 or 1300-2½ for climb in visual conditions. **Rwy 19**, 300-1¾ or std. w/min. climb of 240' per NM to 900. **Rwy 32**, 400-2¼ w/min. climb of 265' per NM to 1700 or std. w/min. climb of 340' per NM to 1700 or 1300-2½ for climb in visual conditions.

DEPARTURE PROCEDURE: **Rwy 1**, climb heading 016° to 1800 before proceeding on course. For climb in visual conditions: cross Orange Muni Airport at or above 1700 MSL before proceeding on course. When executing VCOA, notify ATC prior to departure. **Rwy 14**, climb heading 142° to 2000 before proceeding on course. For climb in visual conditions: cross Orange Muni Airport at or above 1700 MSL before proceeding on course. When executing VCOA, notify ATC prior to departure. **Rwy 19**, climb heading 196° to 1500 before proceeding on course. **Rwy 32**, climb heading 322° to 1700 before proceeding on course. For climb in visual conditions: cross Orange Muni Airport at or above 1700 MSL before proceeding on course. When executing VCOA, notify ATC prior to departure.

NOTE: **Rwy 1**, pole and trees beginning 272' from DER, 6' left of centerline, up to 92' AGL/624' MSL. Terrain and trees beginning 5' from DER, 23' right of centerline, up to 100' AGL/632' MSL. **Rwy 14**, trees beginning 186' from DER, 15' left of centerline, up to 90' AGL/699' MSL.

Buildings and trees beginning 48' from DER, 23' right of centerline, up to 94' AGL/703' MSL. Tower 5889' from DER, 1606' left of centerline, 88' AGL/926' MSL. Trees 1.1 NM from DER, 2138' left of centerline, up to 70' AGL/817' MSL. **Rwy 19**, trees beginning 164' from DER, 28' left of centerline, up to 94' AGL/667' MSL. Trees beginning 1130' from DER, 23' right of centerline, up to 96' AGL/705' MSL. Trees 1.1 NM from DER, 1931' right of centerline, up to 83' AGL/751' MSL. Trees 1.2 NM from DER, 2125' right of centerline, up to 112' AGL/781' MSL. Trees 1.4 NM from DER, 1927' right of centerline, up to 84' AGL/772' MSL. **Rwy 32**, trees beginning 14' from DER, 87' left of centerline, up to 91' AGL/680' MSL. Trees beginning 521' from DER, 13' right of centerline, up to 95' AGL/618' MSL. Trees 1.2 NM from DER, 2366' left of centerline, up to 94' AGL/841' MSL. Trees 1.7 NM from DER, 3315' right of centerline, up to 61' AGL/906' MSL.

## OXFORD, CT

WATERBURY-OXFORD (OXC)

AMDT 5 06327 (FAA)

TAKE-OFF MINIMUMS: **Rwy 36**, 300-1 or std. w/a min. climb of 240' per NM to 1000, alternatively, w/std. takeoff minimums and a normal 200'/NM climb gradient, takeoff must occur no later than 1900' prior to departure end of runway.

NOTE: **Rwy 18**, multiple trees and transmission towers beginning 510' from departure end of runway, 595' left of centerline, up to 100' AGL/777' MSL. Tree 2157' from departure end of runway, 154' from centerline, up to 100' AGL/735' MSL. **Rwy 36**, multiple trees and terrain beginning 464' from departure end of runway, 535' from centerline, up to 100' AGL/881' MSL. Tree 54' from departure end of runway, 450' left of centerline, up to 100' AGL/736' MSL. Tree 618' from departure end of runway, 369' left of centerline, up to 100' AGL/745' MSL.

## OXFORD, ME

OXFORD COUNTY RGNL (81B)

AMDT 1 07186 (FAA)

TAKE-OFF MINIMUMS: **Rwy 15**, 600-3 or 1800-2½ for climb in visual conditions. **Rwy 33**, std. w/min. climb of 475' per NM to 2000, or 1800-2½ for climb in visual conditions.

DEPARTURE PROCEDURE: **Rwy 15**, climb heading 149° to 1300 before proceeding on course or for climb in visual conditions cross Oxford County Rgnl Airport at or above 2000 before proceeding on course. **Rwy 33**, climb heading 329° to 2000 before proceeding on course or for climb in visual conditions cross Oxford County Rgnl Airport at or above 2000 before proceeding on course.

NOTE: **Rwy 15**, multiple trees beginning 3607' from departure end of runway, 572' left of centerline, up to 100' AGL/679' MSL. Multiple assumed obstacles beginning 1.7 NM from departure end of runway, 1478' left of centerline, up to 200' AGL/849' MSL. **Rwy 33**, multiple trees beginning 4121' from departure end of runway, 70' left of centerline, up to 100' AGL/499' MSL. Multiple trees beginning 5446' from departure end of runway, 239' right of centerline, up to 100' AGL/719' MSL. Multiple assumed obstacles beginning 1.6 NM from departure end of runway, 393' right of centerline, up to 200' AGL/1079' MSL.

## PAWTUCKET, RI

NORTH CENTRAL STATE (SFZ)

AMDT 3 09127 (FAA)

NOTE: **Rwy 5**, tree 105' from DER, 233' right of centerline, 15' AGL/434' MSL. Wind sock 2' from DER, 233' right of centerline, 15' AGL/426' MSL. Bush 41' from DER, 250' left of centerline, 14' AGL/428' MSL. Tree 470' from DER, 294' left of centerline, 14' AGL/433' MSL. **Rwy 15**, trees beginning 149' from DER, 218' left of centerline, up to 99' AGL/500' MSL. Multiple trees beginning 70' from DER, 129' right of centerline, up to 99' AGL/593' MSL. **Rwy 23**, multiple trees beginning 145' from DER, 252' left of centerline, up to 30' AGL/449' MSL. **Rwy 33**, multiple trees beginning 24' from DER, 120' right of centerline, up to 69' AGL/494' MSL. Multiple trees beginning 142' from DER, 41' left of centerline, up to 69' AGL/464' MSL.

## PITTSFIELD, MA

PITTSFIELD MUNI (PSF)

AMDT 2 99198 (FAA)

TAKE-OFF MINIMUMS: **Rwys 14, 32**, NA.

**Rwy 8**, 1100-2 or std. with a min. climb of 270' per NM to 2500. **Rwy 26**, 800-2 or std. with a min. climb of 360' per NM to 2100.

DEPARTURE PROCEDURE: **Rwy 8**, climb runway heading to 2000, then climbing right turn via CTR R-331 to 3000 before proceeding on course. **Rwy 26**, climb runway heading to 2400 before proceeding on course.

NOTE: **Rwy 8**, 120' AGL tree 370' from departure end of runway, 533' right of centerline.

12152



## TAKE-OFF MINIMUMS AND (OBSTACLE) DEPARTURE PROCEDURES



NE-1

31 MAY 2012 to 28 JUN 2012

31 MAY 2012 to 28 JUN 2012



## TAKE-OFF MINIMUMS AND (OBSTACLE) DEPARTURE PROCEDURES



12152

**PITTSFIELD, ME**

PITTSFIELD MUNI (2B7)

AMDT 2A 12040 (FAA)

DEPARTURE PROCEDURE: **Rwy 36**, 300-1½ or std w/ min. climb of 220' per NM to 500.NOTE: **Rwy 18**, trees beginning 86' from DER, left and right of centerline, up to 80' AGL/259' MSL. **Rwy 36**, aircraft 49' from DER, 156' left of centerline, 17' AGL/216' MSL. Vehicle 139' from DER, 452' left of centerline, 15' AGL/214' MSL. Building, trees and poles beginning 63' from DER, 15' right of centerline, up to 77' AGL/357' MSL. Trees, poles and buildings beginning 106' from DER, 39' left of centerline, up to 82' AGL/312' MSL.**PLYMOUTH, MA**

PLYMOUTH MUNI (PYM)

AMDT 2 98029 (FAA)

TAKE-OFF MINIMUMS: **Rwy 6**, 300-1 or std. with a min. climb of 390' per NM to 500. **Rwys 15**, 300-1. **Rwy 24**, 300-1 or std. with a min. climb of 220' per NM to 400.**Rwy 33**, 300-1 or std. with a min. climb of 210' per NM to 400.DEPARTURE PROCEDURE: **Rwy 6**, climb runway heading to 900 before proceeding on course.**PORTLAND, ME**

PORTLAND INTL JETPORT (PWM)

AMDT 5 12152 (FAA)

TAKE-OFF MINIMUMS: **Rwy 11**, 300-1 or std. w/ min. climb of 270' per NM to 400. **Rwy 36**, 400-2¾ or std. w/ min. climb of 270' per NM to 700.NOTE: **Rwy 11**, NAVIAID antenna 428' from DER, 280' right of centerline, 18' AGL/53' MSL. Trees beginning 480' from DER, 562' right of centerline, up to 30' AGL/69' MSL. Trees beginning 983' from DER, 418' left of centerline, up to 80' AGL/248' MSL. **Rwy 18**, trees beginning 128' from DER, 405' left of centerline, up to 45' AGL/84' MSL. Vehicle on road 1047' from DER, 739' right of centerline, up to 17' AGL/76' MSL. Trees beginning 1206' from DER, 250' right of centerline, up to 80' AGL/179' MSL. **Rwy 29**, trees beginning 1319' from DER, 509' left right of centerline, up to 80' AGL/178' MSL. Trees beginning 2952' from DER, 1066' left of centerline, up to 101' AGL/200' MSL. **Rwy 36**, roads, poles, buildings, fences beginning 19' from DER 422' left of centerline, up to 40' AGL/114' MSL. Trees beginning 20' from DER, 493' left of centerline, up to 80' AGL/110' MSL. Trees beginning 1386' from DER, 353' right of centerline, up to 80' AGL/121' MSL.**PORTSMOUTH, NH**

PORTSMOUTH INTL AT PEASE (PSM)

ORIG-A 12096 (FAA)

DEPARTURE PROCEDURE: **Rwy 16**, climb heading 165° to 600 before turning left.NOTE: **Rwy 34**, building 519' from DER, 439' right of centerline, 16' AGL/115' MSL. Trees beginning 2752' from DER, 1090' right of centerline, 90' AGL/170' MSL.**PRESQUE ISLE, ME**

NORTHERN MAINE RGNL ARPT AT PRESQUE ISLE (PQI)

AMDT 4A 11321 (FAA)

TAKE-OFF MINIMUMS: **Rwy 1**, 300-1½ or std. w/ min. climb of 456' per NM to 900. **Rwy 10**, 300-1½ or std. w/ min. climb of 262' per NM to 900. **Rwy 19**, 800-1 or std. with a min. climb of 230' per NM to 1600.DEPARTURE PROCEDURE: **Rwy 1**, climb runway heading to 1200 before proceeding on course. **Rwy 10**, climb runway heading to 1700 before proceeding on course.NOTE: **Rwy 1**, tree 2792' from DER, 856' right of centerline, up to 54' AGL/694' MSL. Tree 7304' from DER, 1849' right of centerline, up to 71' AGL/749' MSL. **Rwy 10**, tree 8710' from DER, 1660' right of centerline, up to 70' AGL/760' MSL. Tree 8861' from DER, 1668' right of centerline, up to 84' AGL/764' MSL.**PRINCETON, ME**

PRINCETON MUNI (PNN)

ORIG 81358 (FAA)

DEPARTURE PROCEDURE: **Rwy 24**, climbing right turn direct PNN VOR/DME before proceeding on course.**PROVIDENCE, RI**

THEODORE FRANCIS GREEN STATE (PVD)

AMDT 12 07074 (FAA)

TAKE-OFF MINIMUMS: **Rwy 34**, std. w/ a min. climb of 269' per NM to 500, or 300-2 w/ a min. climb of 250' per NM to 1200, or 1000-2½ for climb in visual conditions.DEPARTURE PROCEDURE: **Rwy 34**, for climb in visual conditions: cross Theodore Francis Green State Airport or above 900 MSL before proceeding on course.NOTE: **Rwy 5**, multiple trees beginning 1272' from departure end of runway, 506' left of centerline, up to 50' AGL/109' MSL. Multiple trees beginning 1541' from departure end of runway, 738' right of centerline, up to 73' AGL/123' MSL. **Rwy 16**, multiple trees beginning 85' from departure end of runway, 98' right of centerline, up to 36' AGL/105' MSL. Multiple trees beginning 364' from departure end of runway, 127' left of centerline, up to 68' AGL/112' MSL. Multiple light poles beginning 2797' from departure end of runway, 914' right of centerline, up to 66' AGL/110' MSL. Antenna 3890' from departure end of runway, 1352' right of centerline, 91' AGL/151' MSL. Tower 3931' from departure end of runway, 1377' right of centerline, 77' AGL/137' MSL. **Rwy 34**, vent 105' from departure end of runway, 310' right of centerline, 47' AGL/76' MSL. Blast fence 211' from departure end of runway, 209' left of centerline, 7' AGL/61' MSL. Pole 312' from departure end of runway, 279' right of centerline, 20' AGL/80' MSL. Multiple trees beginning 352' from departure end of runway, 484' right of centerline, up to 79' AGL/136' MSL. Obstruction light 400' from departure end of runway, 189' left of centerline, 15' AGL/74' MSL. Vent 546' from departure end of runway, 518' left of centerline, 26' AGL/85' MSL. Multiple poles beginning 593' from departure end of runway, 245' left of centerline, up to 68' AGL/97' MSL. Multiple trees beginning 1233' from departure end of runway, 112' left of centerline, up to 79' AGL/132' MSL. Light 710' from departure end of runway, 617' left of centerline, 24' AGL/93' MSL. Tower 9063' from departure end of runway, 2916' right of centerline, 255' AGL/310' MSL.

31 MAY 2012 to 28 JUN 2012

31 MAY 2012 to 28 JUN 2012

12152



## TAKE-OFF MINIMUMS AND (OBSTACLE) DEPARTURE PROCEDURES



NE-1



## TAKE-OFF MINIMUMS AND (OBSTACLE) DEPARTURE PROCEDURES



12152

**PROVINCETOWN, MA**  
 PROVINCETOWN MUNI (PVC)  
 ORIG 07214 (FAA)

NOTE: **Rwy 7**, trees beginning 133' from DER, 118' right of centerline up to 33' AGL/37' MSL. Trees beginning 165' from DER, 89' left of centerline up to 33' AGL/47' MSL. **Rwy 25**, bush 376' from DER, 575' right of centerline, 12' AGL/21' MSL.

**RANGELEY, ME**

**RANGELEY LAKE SEAPLANE BASE (M57)**  
 ORIG 94146 (FAA)

TAKE-OFF MINIMUMS: **Rwy 6**, NA. **Rwy 24**, 800-2 or std. with a min. climb of 280' per NM to 2500.

DEPARTURE PROCEDURE: **Rwy 6**, NA. **Rwy 24**, climb to 2800 via the 274° bearing to RQM NDB. Climb in RQM NDB holding to 4000 before proceeding on course.

**STEVEN A. BEAN MUNI (8B0)****ORIG 92093 (FAA)**

TAKE-OFF MINIMUMS: **Rwys 14, 32**, 600-2.

DEPARTURE PROCEDURE: **Rwy 14**, climbing right turn direct RQM NDB to cross at or above 4000 before proceeding on course. **Rwy 32**, climbing left turn direct RQM NDB to cross at or above 4000 before proceeding on course.

**ROCHESTER, NH****SKYHAVEN (DAW)****AMDT 6 09351 (FAA)**

DEPARTURE PROCEDURE: **Rwy 33**, climb heading 327° to 800, then climbing left turn heading 250° to intercept CON VORTAC R-095 to 3000 before proceeding on course.

NOTE: **Rwy 15**, trees beginning 450' from DER, 295' left of centerline, up to 110' AGL/400' MSL. Trees and poles beginning 111' from DER, 389' right of centerline, up to 57' AGL/367' MSL. **Rwy 33**, trees beginning 200' from DER, 154' right of centerline, up to 120' AGL/443' MSL. Trees beginning 106' from DER, 160' left of centerline, up to 103' AGL/406' MSL.

**ROCKLAND, ME****KNOX COUNTY RGNL (RKD)****ADMT 4 04218 (FAA)**

TAKE-OFF MINIMUMS: **Rwy 3**, 300-1 or std. with a min. climb of 270' per NM to 2000, or 1100-2½ for climb in visual conditions. **Rwy 31**, std. with a min. climb of 300' per NM to 1300, or 1100-2½ for climb in visual conditions.

DEPARTURE PROCEDURE: **Rwys 3, 31**, for climb in visual conditions: cross Knox County Rgnl at or above 1000' MSL before proceeding on course.

NOTE: **Rwy 3**, multiple trees, bushes, obstruction lights and towers beginning 108' from departure end of runway, 433' left of centerline, up to 146' AGL/206' MSL. **Rwy 13**, multiple trees, antennas, and light poles beginning 475' from departure end of runway, 548' left of centerline, up to 80' AGL/155' MSL. **Rwy 21**, multiple trees beginning 284' from departure end of runway, 255' left of centerline, up to 65' AGL/110' MSL. **Rwy 31**, multiple trees beginning 2025' from departure end of runway, 895' right of centerline, up to 74' AGL/115' MSL.

**RUTLAND, VT****RUTLAND-SOUTHERN VERMONT RGNL (RUT)****AMDT 3 09211 (FAA)**

TAKE-OFF MINIMUMS: **Rwy 1**, std. w/min. climb of 439' per NM to 2800, or 3600-3 for climb in visual conditions. **Rwy 13**, NA-obstacles. **Rwy 19**, std. w/min. climb of 470' per NM to 3300, or 3600-3 for climb in visual conditions. **Rwy 31**, std. w/min. climb of 420' per NM to 4500, or 3600-3 for climb in visual conditions.

DEPARTURE PROCEDURE: **Rwy 1**, climb via 013° course to DYO NDB, cross DYO NDB at or above 6000, if not at 6000, depart DYO NDB on bearing 325° to 6000 before proceeding on course. For climb in visual conditions: cross Rutland-Southern Vermont Rgnl airport at or above 4300 before proceeding on course. **Rwy 19**, climb heading 194° to 1400, then climbing right turn via 025° course to DYO NDB, cross DYO NDB at or above 6000, if not at 6000, depart DYO NDB on bearing 325° to 6000 before proceeding on course. For climb in visual conditions: cross Rutland-Southern Vermont Rgnl airport at or above 4300 before proceeding on course. **Rwy 31**, climb heading 329° to 1600, then climbing right turn via 025° course to DYO NDB, cross DYO NDB at or above 6000, if not at 6000, depart DYO NDB on bearing 325° to 6000 before proceeding on course. For climb in visual conditions: cross Rutland-Southern Vermont Rgnl airport at or above 4300 before proceeding on course.

NOTE: **Rwy 1**, tree 46' from DER, 417' left of centerline, 80' AGL/829' MSL. Tree 79' from DER, 424' right of centerline, 80' AGL/805' MSL. **Rwy 19**, trees beginning 391' from DER, 178' left of centerline, up to 80' AGL/864' MSL. Trees beginning 166' from DER, 303' right of centerline, up to 80' AGL/843' MSL. **Rwy 31**, tree 357' from DER, 400' left of centerline, 80' AGL/843' MSL. Road 334' from DER, 94' left of centerline, 20' AGL/799' MSL. Tree 885' from DER, 201' right of centerline, 80' AGL/818' MSL. Tree 891' from DER, 403' right of centerline, 80' AGL/827' MSL.

**SANFORD, ME****SANFORD RGNL (SFM)****AMDT 3 11125**

TAKE-OFF MINIMUMS: **Rwy 32**, 300-1¼ or std. w/min. climb of 375' per NM to 500.

DEPARTURE PROCEDURE: **Rwy 25**, climb heading 255° to 1100 before turning right.

**Rwy 32**, climb heading 331° to 1600 before turning left.

NOTE: **Rwy 7**, vehicles on road, antenna, light support structure, transmission tower, and trees beginning 62' from DER, 4' left of centerline, up to 69' AGL/309' MSL. Trees beginning 220' from DER, 19' right of centerline, up to 72' AGL/311' MSL. **Rwy 14**, trees beginning 149' from DER, 320' left of centerline, up to 55' AGL/294' MSL. Bushes and trees beginning 93' from DER, 260' right of centerline, up to 81' AGL/320' MSL. **Rwy 25**, trees beginning 118' from DER, 511' left of centerline, up to 60' AGL/379' MSL. Trees beginning 245' from DER, 476' right of centerline, up to 82' AGL/321' MSL. **Rwy 32**, trees beginning 763' from DER, 58' left of centerline, up to 77' AGL/396' MSL. Pole and trees beginning 332' from DER, 59' right of centerline, up to 92' AGL/381' MSL. Trees 3269' from DER, 1226' left of centerline, up to 72' AGL/401' MSL. Trees 4667' from DER, 1225' left of centerline, up to 82' AGL/431' MSL. Trees 5473' from DER, 1013' left of centerline, up to 67' AGL/416' MSL.

31 MAY 2012 to 28 JUN 2012

31 MAY 2012 to 28 JUN 2012

12152



## TAKE-OFF MINIMUMS AND (OBSTACLE) DEPARTURE PROCEDURES



NE-1



## TAKE-OFF MINIMUMS AND (OBSTACLE) DEPARTURE PROCEDURES



12152

**SOUTHBRIDGE, MA**

SOUTHBRIDGE MUNI (3B0)

AMDT 3 10070 (FAA)

TAKE-OFF MINIMUMS: **Rwy 2**, 300-1½ or std. with a min. climb of 370' per NM to 1000.DEPARTURE PROCEDURE: **Rwy 2**, climb heading 022° to 1800 before turning right.NOTE: **Rwy 2**, trees beginning 597' from DER, 58' left of centerline, up to 100' AGL/913' MSL. Tree 812' from DER, 197' right of centerline, 100' AGL/791' MSL.**Rwy 20**, trees beginning 70' from DER, 309' right of centerline, up to 78' AGL/740' MSL. Tree 1044' from DER, 395' left of centerline, 43' AGL/732' MSL.**SPRINGFIELD, VT**

HARTNESS STATE (SPRINGFIELD) (VSF)

AMDT 3 11181 (FAA)

TAKE-OFF MINIMUMS: **Rwy 5**, 800-3 w/min. climb of 649' per NM to 4500 or 2800-3 for climb in visual conditions. **Rwy 11**, 2800-3 for climb in visual conditions. **Rwy 29**, 800-2½ w/min. climb of 490' per NM to 4600 or std. w/min. climb of 630' per NM to 3400 or 2800-3 for climb in visual conditions. **Rwy 23**, std. w/min. climb of 400' per NM to 2800 or 2800-3 for climb in visual conditions.DEPARTURE PROCEDURE: **Rwy 5**, for climb in visual conditions cross Hartness State (Springfield) Airport at or above 3200 MSL before proceeding on course.**Rwy 11**, for climb in visual conditions cross Hartness State (Springfield) Airport at or above 3200 MSL before proceeding on course. **Rwy 23**, climb heading 230° to 2800 before proceeding on course, or for climb in visual conditions cross Hartness State (Springfield) Airport at or above 3200 MSL before proceeding on course. **Rwy 29**, climb heading 294° to 1200 before proceeding on course, or for climb in visual conditions cross Hartness State (Springfield) Airport at or above 3200 MSL before proceeding on course.NOTE: **Rwy 5**, trees beginning 28' from DER, 187' right of centerline, up to 80' AGL/1344' MSL. Trees beginning 44' from DER, 499' left of centerline, up to 80' AGL/1291' MSL. **Rwy 23**, trees beginning 9' from DER, 339' right of centerline, up to 80' AGL/679' MSL. Trees beginning 10' from DER, 265' left of centerline, up to 80' AGL/639' MSL. **Rwy 29**, trees beginning 22' from DER, 470' left of centerline, up to 80' AGL/639' MSL. Vehicle on road 1409' from DER, 845' right of centerline, up to 17' AGL/616' MSL. Trees beginning 1614' from DER, 924' right of centerline, up to 80' AGL/699' MSL.**STOW, MA**

MINUTE MAN AIRFIELD (6B6)

AMDT 3 10266 (FAA)

TAKE-OFF MINIMUMS: **Rwy 3**, 400-2¾ or std. w/min. climb of 420' per NM to 700. **Rwy 12**, NA-Environmental. **Rwy 21**, 400-2¾ or std. w/min. climb of 600' per NM to 600.DEPARTURE PROCEDURE: **Rwy 3**, climb heading 032° to 800 before proceeding on course. **Rwy 21**, climb heading 212° to 1600 before proceeding on course.NOTE: **Rwy 3**, trees beginning 9' from DER, 244' right of centerline, up to 80' AGL/434' MSL. Trees beginning 246' from DER, 168' left of centerline, up to 80' AGL/652' MSL.**Rwy 21**, trees beginning 11' from DER, 188' right of centerline, up to 80' AGL/385' MSL. Trees beginning 11' from DER, 198' left of centerline, up to 80' AGL/365' MSL. Trees beginning 529' from DER, left and right of centerline, up to 80' AGL/574' MSL. Tower 1.6 NM from DER, 2483' left of centerline, 118' AGL/511' MSL.**TAUNTON, MA**

TAUNTON MUNI-KING FIELD (TAN)

AMDT 2 08045 (FAA)

TAKE-OFF MINIMUMS: **Rwys 4, 22**, NA-Turf runway. **Rwy 12**, 200-1½ or standard with minimum climb of 362' per NM to 300. **Rwy 30**, 200-1 or std. w/min climb of 291' per NM to 300.NOTE: **Rwy 12**, Trees and terrain beginning 61' from departure end of runway, 128' right of centerline, up to 80' AGL/229' MSL. Trees and terrain beginning 93' from departure end of runway, 204' left of centerline, up to 80' AGL/159' MSL. **Rwy 30**, Terrain beginning 147' from departure end of runway, 284' right of centerline, 43' MSL. Trees and terrain beginning 1044' from departure end of runway, 320' left of centerline, up to 80' AGL/199' MSL.**VINEYARD HAVEN, MA**

MARTHAS VINEYARD (MVY)

AMDT 1 11013 (FAA)

NOTE: **Rwy 6**, trees beginning 585' from DER, 492' left of centerline, up to 100' AGL/159' MSL. Trees beginning 707' from DER, 543' right of centerline, up to 100' AGL/159' MSL. **Rwy 15**, trees beginning 276' from DER, 156' left of centerline, up to 100' AGL/159' MSL. Pole 411' from DER, 475' right of centerline, 45' AGL/97' MSL. Trees beginning 430' from DER, 79' right of centerline, up to 100' AGL/159' MSL. **Rwy 24**, trees beginning 594' from DER, 201' left of centerline, up to 100' AGL/149' MSL. Trees beginning 606' from DER, 442' right of centerline, up to 100' AGL/159' MSL. Building 791' from DER, 266' left of centerline, 25' AGL/75' MSL. **Rwy 33**, trees beginning 36' from DER, 120' left of centerline, up to 100' AGL/179' MSL. Trees beginning 67' from DER, 75' right of centerline, up to 100' AGL/169' MSL.**WATERVILLE, ME**

WATERVILLE ROBERT LAFLEUR (WVL)

ORIG 82133 (FAA)

TAKE-OFF MINIMUMS: **Rwys 14, 32**, 300-1.

31 MAY 2012 to 28 JUN 2012

31 MAY 2012 to 28 JUN 2012

12152



## TAKE-OFF MINIMUMS AND (OBSTACLE) DEPARTURE PROCEDURES



NE-1



## TAKE-OFF MINIMUMS AND (OBSTACLE) DEPARTURE PROCEDURES



12152

## WEST DOVER, VT

MOUNT SNOW (4V8)

AMDT 2 11181 (FAA)

TAKE-OFF MINIMUMS: **Rwy 1**, 700-3 w/min. climb of 430' per NM to 4400. **Rwy 19**, std. w/min. climb of 300' per NM to 3900.

DEPARTURE PROCEDURE: **Rwy 1**, climb heading 005° to 4400 before turning west. **Rwy 19**, climb heading 185° to 3900 before turning west.

NOTE: **Rwy 1**, trees beginning 31' from DER, left and right of centerline, up to 90' AGL/2640' MSL. Rising terrain beginning 1.2 NM from DER, left and right of centerline, up to 4140' MSL. **Rwy 19**, trees beginning 16' from DER, left and right of centerline, up to 90' AGL/2078' MSL.

## WESTERLY, RI

WESTERLY STATE (WST)

AMDT 3 11153 (FAA)

TAKE-OFF MINIMUMS: **Rwy 25**, 300-1

NOTE: **Rwy 7**, trees beginning 36' from DER 57' right of centerline, up to 70' AGL/120' MSL. Tree 789' from DER, 332' left of centerline, 41' AGL/100' MSL.

**Rwy 14**, trees beginning 124' from DER, 31' right of centerline, up to 61' AGL/173' MSL. Trees beginning 443' from DER, 73' left of centerline, up to 54' AGL/163' MSL. Bush 327' from DER, 3' left of centerline, 19' AGL/98' MSL. **Rwy 25**, trees beginning 171' from DER, 119' right of centerline, up to 62' AGL/121' MSL. Tank 2957' from DER, 1038' left of centerline, 126' AGL/250' MSL. Obstruction light on pole 50' from DER, 496' left of centerline, 13' AGL/92' MSL. Trees beginning 439' from DER, 93' left of centerline, up to 61' AGL/184' MSL. **Rwy 32**, trees beginning 32' from DER, 46' right of centerline, up to 84' AGL/173' MSL. Trees beginning 152' from DER, 41' left of centerline, up to 85' AGL/174' MSL.

## WESTFIELD, MA

BARNES MUNI (BAF)

AMDT 4 10154 (FAA)

TAKE-OFF MINIMUMS: **Rwy 2**, 300-1½ or std. w/min. climb of 204' per NM to 600 or, alternatively, with standard take-off minimums a normal 200'/NM climb gradient, take-off must occur no later than 1200' prior to DER. **Rwy 15**, 400-2 or std. w/ a min. climb of 404' per NM to 700. **Rwy 33**, std. w/min. climb of 323' per NM to 2000, or 1500-2½ for climb in visual conditions.

DEPARTURE PROCEDURE: **Rwy 2**, climb heading 024° to 1700 before proceeding on course. **Rwy 15**, climb heading 154° to 1300 before proceeding on course. **Rwy 20**, climb heading 204° to 1500 before proceeding on course. **Rwy 33**, climb heading 334° to 1900 before proceeding on course, or for climb in visual conditions: cross Barnes Muni airport at or above 1600 MSL before proceeding on course.

NOTE: **Rwy 2**, trees beginning 1186' from DER, 144' left of centerline, up to 100' AGL/385' MSL. Trees beginning 1098' from DER, 431' right of centerline, up to 100' AGL/465' MSL. **Rwy 15**, trees beginning 245' from DER, 74' left of centerline, up to 100' AGL/576' MSL. Bush 245' from DER, 285' left of centerline, up to 20' AGL/265' MSL. Obstruction light on tank 4773' from DER, 1315' left of centerline, 190' AGL/440' MSL. Trees beginning 360' from DER, 8' right of centerline, up to 100' AGL/508' MSL. **Rwy 20**, trees beginning 18' from DER, 47' left of centerline, up to 100' AGL/321' MSL. Trees beginning 541' from DER, 38' right of centerline, up to 100' AGL/329' MSL. **Rwy 33**, trees and bush beginning 151' from DER, 138' left of centerline, up to 100' AGL/383' MSL. Obstruction light on radio tower and towers beginning 1.50 NM from DER, 2641' left of centerline, up to 305' AGL/545' MSL. Trees beginning 311' from DER, 35' right of centerline, up to 100' AGL/513' MSL.

## WESTOVER ARB/METROPOLITAN (KCEF),

SPRINGFIELD/CHICOPEE, MA. . . . ORIG, 11153

TAKE-OFF MINIMUMS: **Rwy 5**, standard with minimum climb of 240 ft/NM to 1600, or 1200-2.50 for climb in visual conditions: Cross CEF VOR at or above 1300' MSL before proceeding on course.

**Rwy 15**, standard with minimum climb of 210 ft/NM to 1800, or 1100-2.50 for climb in visual conditions, or with standard takeoff minimums and a standard 200 ft/NM climb gradient, takeoff must occur NLT 1400' prior to DER: Cross CEF VOR at or above 1200' MSL before proceeding on course. **Rwy 33**, standard with minimum climb of 300 ft/NM to 1800, or 1300-2.50 for climb in visual conditions: Cross CEF VOR at or above 1400' MSL before proceeding on course.

TAKE-OFF OBSTACLES: **Rwy 15**, trees 1151' from DER, 118' left of cntrln, 100' AGL/319' MSL to 3516' from DER, 1285' left of cntrln, 100' AGL/357' MSL. **Rwy 23**, taxiing aircraft 87' from DER, 467' right of cntrln, 32' AGL/267' MSL. Trees 1740' from DER, 199' right of cntrln, 45' AGL/291' MSL. **Rwy 33**, road/vehicle 1104' from DER, 272' right of cntrln, 15' AGL/255' MSL. Trees 2793' from DER, 218' left of cntrln, 99' AGL/348' MSL.

31 MAY 2012 to 28 JUN 2012

31 MAY 2012 to 28 JUN 2012

12152



## TAKE-OFF MINIMUMS AND (OBSTACLE) DEPARTURE PROCEDURES



NE-1



## TAKE-OFF MINIMUMS AND (OBSTACLE) DEPARTURE PROCEDURES



12152

**WHITEFIELD, NH**

MOUNT WASHINGTON RGNL (HIE)

AMDT 5 11097 (FAA)

TAKE-OFF MINIMUMS: **Rwy 10**, std. w/ min. climb of 670' per NM to 5100 or 3100-3 for climb in visual conditions. **Rwy 28**, std. w/ min. climb of 540' per NM to 2300, or 400-2½ with minimum climb of 340' per NM to 2800, or 3100-3 for climb in visual conditions.

DEPARTURE PROCEDURE: **Rwy 10**, climbing left turn direct GMA NDB thence ... or for climb in visual conditions, cross Mount Washington RGNL Airport at or above 4000' MSL, then on course 250° to GMA NDB, thence ... **Rwy 28**, climb direct GMA NDB thence ... or for climb in visual conditions, cross Mount Washington RGNL Airport at or above 4000' MSL, then on course 250° to GMA NDB, thence ... climb in GMA NDB holding pattern (hold West, left turns, 104° bearing inbound) to cross GMA NDB at or above 5500' MSL before proceeding on course.

NOTE: **Rwy 10**, train beginning 7' from DER, 467' left of centerline, up to 23' AGL/1125' MSL. Bush 52' from DER, 373' right of centerline, 10' AGL/1082' MSL.

Trees beginning 61' from DER, left and right of centerline, up to 100' AGL/1418' MSL. Rising terrain beginning 153' from DER, left and right of centerline, up to 1185' MSL. Poles beginning 686' from DER, 379' left of centerline, 45' AGL/1128' MSL. **Rwy 28**, train beginning 7' from DER, 469' right of centerline, up to 23' AGL/1085' MSL. Vehicles on road beginning 8' from DER, left and right of centerline, up to 15' AGL/1097' MSL. Rising terrain beginning 213' from DER, 485' left of centerline, up to 1303' MSL. Trees beginning 269' from DER, left and right of centerline, up to 100' AGL/1438' MSL.

**WILLIMANTIC, CT**

WINDHAM (JD)

AMDT 5 08297 (FAA)

TAKE-OFF MINIMUMS: **Rwy 9**, std. w/ min. climb of 340' per NM to 1100, or 1100-2½ for climb in visual conditions. **Rwy 18**, 300-2 or std. w/ min. climb of 408' per NM to 700. **Rwy 27**, 400-2 or std. w/ min. climb of 290' per NM to 700. **Rwy 36**, std. w/ min. climb of 401' per NM to 1100, or 1100-2½ for climb in visual conditions.

DEPARTURE PROCEDURE: **Rwy 9**, climb heading 089° to 700 before proceeding on course, or for climb in visual conditions cross Windham Airport at or above 1200 before proceeding on course. **Rwy 18**, climb heading 170° to 1200 before turning right. **Rwy 27**, climb heading 269° to 800 before proceeding on course. **Rwy 36**, for climb in visual conditions cross Windham Airport at or above 1200 before proceeding on course.

NOTE: **Rwy 9**, trees beginning 50' from departure end of runway, 118' right of centerline, up to 80' AGL/669' MSL. Pole and trees beginning 284' from departure end of runway, 12' left of centerline, up to 86' AGL/529' MSL. Fence 119' from departure end of runway, 207' left of centerline, 6' AGL/246' MSL. **Rwy 18**, trees beginning 49' from departure end of runway, 16' right of centerline, up to 80' AGL/402' MSL. Trees beginning 317' from departure end of runway, 47' left of centerline, up to 80' AGL/529' MSL. Bush 248' from departure end of runway, 93' left of centerline, 14' AGL/261' MSL. Light standard 415' from departure end of runway, 149' left of centerline 32' AGL/279' MSL. **Rwy 27**, obstacle light on antenna and trees beginning 45' from departure end of runway, 46' left of centerline, up to 99' AGL/299' MSL. Trees beginning 193' from departure end of runway, 230' right of centerline, up to 80' AGL/549' MSL. Obstruction light on localizer, 83' from departure end of runway, on centerline, 8' AGL/247' MSL. **Rwy 36**, trees beginning 150' from departure end of runway, 155' right of centerline, up to 80' AGL/339' MSL. Trees beginning 195' from departure end of runway, 24' left of centerline, up to 80' AGL/559' MSL.

31 MAY 2012 to 28 JUN 2012

31 MAY 2012 to 28 JUN 2012

12152



## TAKE-OFF MINIMUMS AND (OBSTACLE) DEPARTURE PROCEDURES



NE-1



## TAKE-OFF MINIMUMS AND (OBSTACLE) DEPARTURE PROCEDURES



12152

## WINDSOR LOCKS, CT

BRADLEY INTL (BDL)

AMDT 3 10154 (FAA)

TAKE-OFF MINIMUMS: **Rwy 33**, std. w/min. climb of 326' per NM to 1000, or 1200-2½ for climb in visual conditions.

DEPARTURE PROCEDURE: **Rwy 1**, Climb heading 013° to 1000 before turning left. **Rwy 33**, Climb heading 328° to 1000 or for climb in visual conditions: cross Bradley Intl airport at or above 1200 before proceeding on course.

NOTE: **Rwy 1**, vehicle on roadway 342' from DER, 564' left of centerline, 15' AGL/184' MSL. Trees beginning 441' from DER, 493' left of centerline, up to 100' AGL/269' MSL. Trees beginning 1844' from DER, 45' right of centerline, up to 100' AGL/299' MSL. **Rwy 6**, trees beginning 21' from DER, 464' left of centerline, up to 100' AGL/249' MSL. Trees beginning 1956' from DER, 921' right of centerline, up to 100' AGL/239' MSL. **Rwy 15**, vehicle on roadway 531' from DER, 606' left of centerline, up to 15' AGL/186' MSL. Trees beginning 2341' from DER, 767' left of centerline, up to 100' AGL/244' MSL. Vehicle on roadway 429' from DER, 572' right of centerline, up to 15' AGL/184' MSL. Tree 1520' from DER, 786' right of centerline, up to 100' AGL/259' MSL. **Rwy 24**, trees beginning 3066' from DER, 599' left of centerline, up to 100' AGL/269' MSL. Obstruction light on fence 1239' from DER, 784' left of centerline, up to 45' AGL/215' MSL. Trees beginning 2345' from DER, 489' right of centerline, up to 100' AGL/299' MSL. **Rwy 33**, trees beginning 1590' from DER, 275' left of centerline, up to 100' AGL/256' MSL. Tower 2.4 NM from DER, 3534' left of centerline, 104' AGL/774' MSL. Trees beginning 1618' from DER, 264' right of centerline, up to 100' AGL/263' MSL.

## WISCASSET, ME

WISCASSET (IWI)

AMDT 2 10154 (FAA)

TAKE-OFF MINIMUMS: **Rwy 7**, 300-2 or std. with a min. climb of 232' per NM to 400, or alternatively, with standard take-off minimums and a normal 200' per NM climb gradient, take-off must occur no later than 2100' prior to DER.

NOTE: **Rwy 7**, trees beginning 115' from DER, right of and left of centerline, up to 80' AGL/149' MSL. Vehicle on road, 537' from DER, right and left of centerline, 17' AGL/76' MSL. T-L towers beginning 3144' from DER, right and left of centerline, 141' AGL/206' MSL. Trees beginning 3643' from DER, 1311' right of centerline, up to 80' AGL/179' MSL. Pole 400' from DER, 500' left of centerline, 35' AGL/85' MSL. Trees beginning 1.38 NM from DER, 285' right of centerline, up to 80' AGL/299' MSL. **Rwy 25**, vehicles on roads beginning 30' from DER, right and left of centerline, 15' AGL/84' MSL. Trees beginning 739' from DER, 111' left of centerline, up to 80' AGL/149' MSL. Trees beginning 501' from DER, 252' right of centerline, up to 80' AGL/189' MSL.

## WORCESTER, MA

WORCESTER RGNL (ORH)

AMDT 8 10070 (FAA)

TAKE-OFF MINIMUMS: **Rwy 29**, 300-1 or std. with a min. climb of 323' per NM to 1300. **Rwy 33**, 700-3 or std. with a min. climb of 394' per NM to 2000.

DEPARTURE PROCEDURE: **Rwy 29**, climb heading 289° to 1600 before turning right. **Rwy 33**, climb heading 333° to 2000 before turning right

NOTE: **Rwy 15**, trees beginning 130' from DER, 333' right of centerline, up to 100' AGL/1011' MSL. Trees beginning 63' from DER, 250' left of centerline, up to 100' AGL/1003' MSL. **Rwy 29**, trees beginning 55' from DER, 464' right of centerline, up to 100' AGL/1192' MSL. Trees beginning 617' from DER, 621' left of centerline, up to 100' AGL/1109' MSL. **Rwy 33**, trees beginning 212' from DER, 124' left of centerline, up to 100' AGL/1043' MSL. Trees beginning 499' from DER, 339' right of centerline, up to 100' AGL/1418' MSL. Rising terrain beginning 1.5 NM from DER, 1491' right of centerline, up to 1385' MSL. Rod on pole 1.3 NM from DER, 1325' left of centerline, up to 76' AGL/1224' MSL. Rod on pole 1.4 NM from DER, 195' right of centerline, up to 90' AGL/1257' MSL. Rod on pole 1.6 NM from DER, 2120' right of centerline, up to 107' AGL/1402' MSL. Tower 1.8 NM from DER, 3415' right of centerline, up to 106' AGL/1500' MSL. Tower 2.3 NM from DER, 4087' right of centerline, up to 366' AGL/1674' MSL.

31 MAY 2012 to 28 JUN 2012

31 MAY 2012 to 28 JUN 2012

12152



## TAKE-OFF MINIMUMS AND (OBSTACLE) DEPARTURE PROCEDURES



NE-1