

NDB PFH <b>272</b>	APP CRS <b>027°</b>	Rwy Idg TDZE Apt Elev	<b>N/A</b> <b>N/A</b> <b>198</b>
-----------------------	------------------------	-----------------------------	--

**NDB-A**

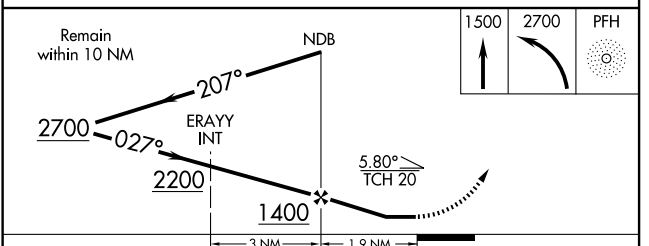
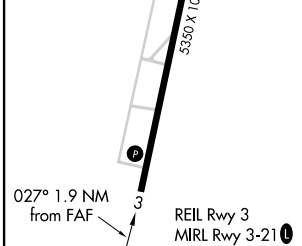
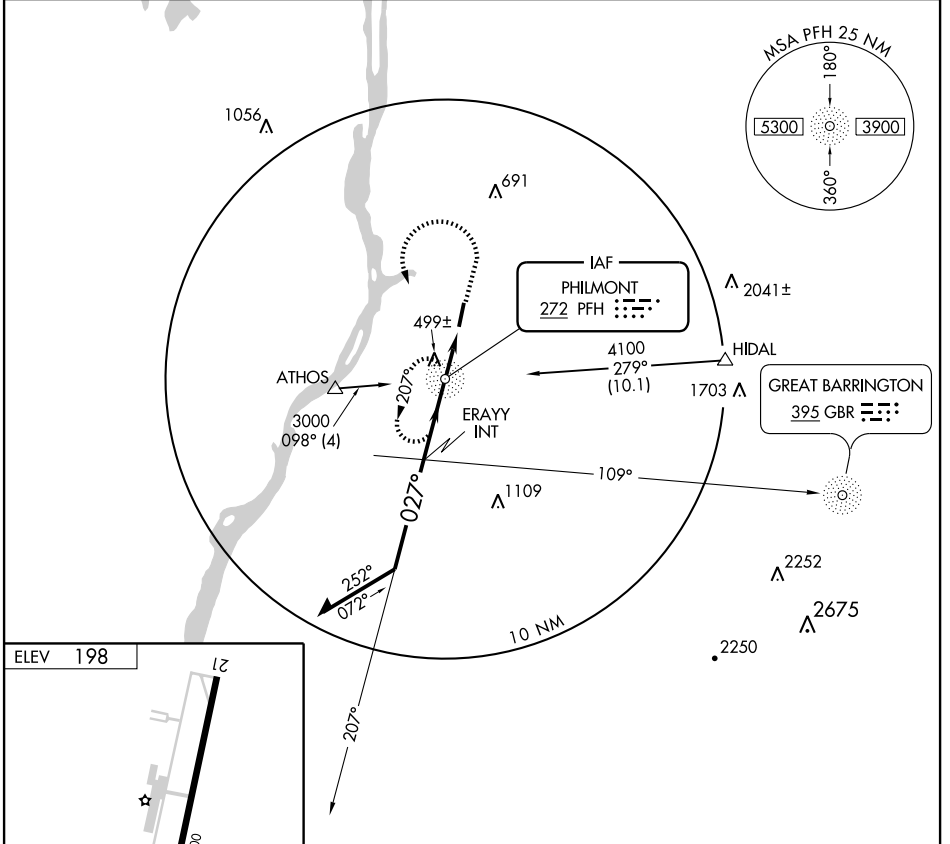
HUDSON/COLUMBIA COUNTY (1B1)

**▽** Visibility reduction by helicopters NA. When local altimeter setting not received, use Albany altimeter setting and increase all MDA 80 feet, increase Cat C visibility ½ mile and Cat D visibility ¼ mile.

**△** NA

MISSED APPROACH: Climb to 1500 then climbing left turn to 2700 direct PFH NDB and hold.

AWOS-3 <b>133.525</b>	ALBANY APP CON <b>132.825 307.2</b>	UNICOM <b>123.05</b> (CTAF) <b>0</b>
--------------------------	--	---



FAF to MAP 1.9 NM		CATEGORY	A	B	C	D
Knots	60 90 120 150 180	CIRCLING	800-1 602 (700-1)	820-1 622 (700-1)	860-1¼ 662 (700-1¾)	920-2¼ 722 (800-2¼)
Min:Sec	1:54 1:16 0:57 0:46 0:38					

**NDB-A**

NE-2, 31 MAY 2012 to 28 JUN 2012

NE-2, 31 MAY 2012 to 28 JUN 2012

WAAS CH <b>40215</b> <b>W21A</b>	APP CRS <b>205°</b>	Rwy Idg <b>5350</b> TDZE <b>194</b> Apt Elev <b>198</b>
--	------------------------	---

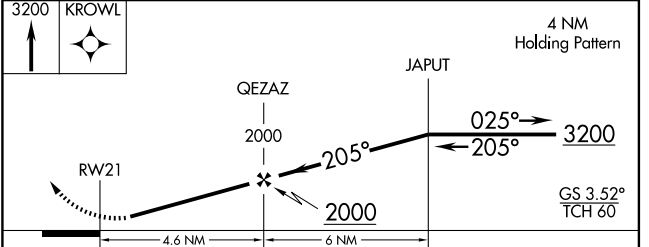
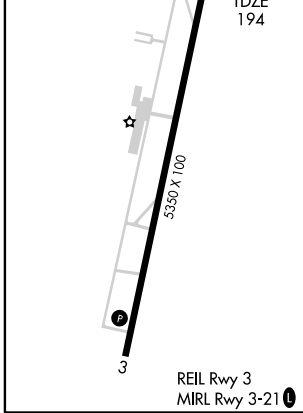
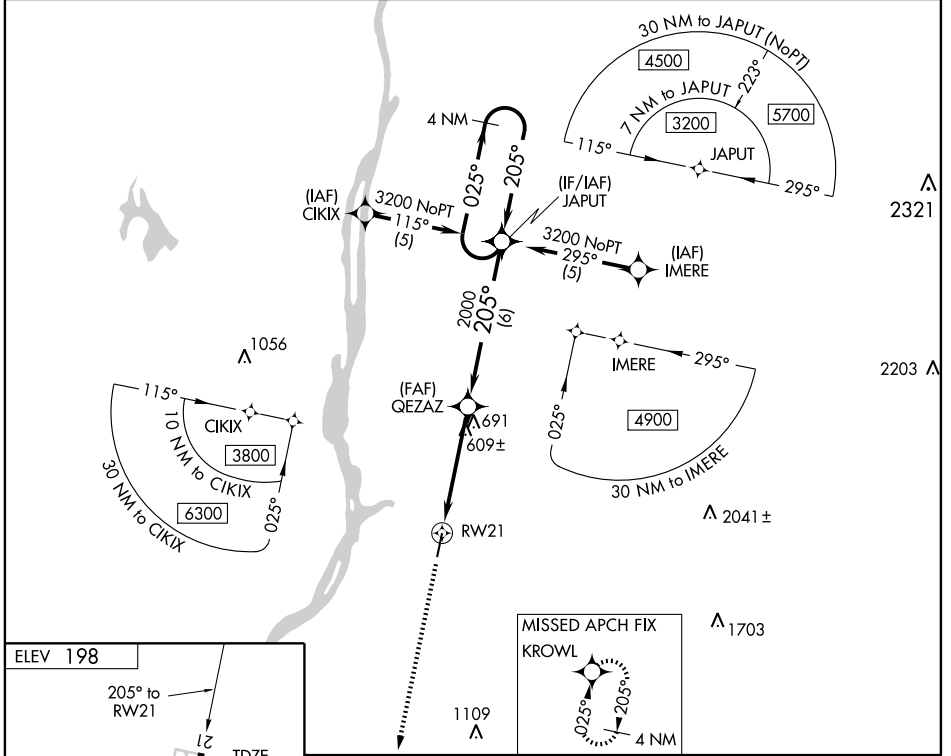
# RNAV (GPS) RWY 21

HUDSON/COLUMBIA COUNTY (1B1)

**⚠** DME/DME RNP -0.3 NA. Visibility reduction by helicopters NA. When local altimeter setting not received, use Albany altimeter setting and increase all DA 76 feet and all MDA 80 feet, increase LPV all Cats visibility ¼ mile, LNAV Cat B ¼ mile, Cats C and D ½ mile. Circling Cat B ¼ mile and Cat C ½ mile and Cat D ¼ mile.

**⚠** MISSED APPROACH: Climb to 3200 direct KROWL and hold.

AWOS-3 <b>133.525</b>	ALBANY APP CON <b>132.825 307.2</b>	UNICOM <b>123.05 (CTAF)</b> <b>0</b>
--------------------------	--	---



CATEGORY	A	B	C	D
LPV DA	614-1¼		420 (500-1¼)	NA
LNAV MDA	860-1	666 (700-1)	860-1¾ 666 (700-1¾)	860-2 666 (700-2)
CIRCLING	860-1	662 (700-1)	860-1¾ 662 (700-1¾)	920-2¼ 722 (800-2¼)

NE-2, 31 MAY 2012 to 28 JUN 2012

NE-2, 31 MAY 2012 to 28 JUN 2012

WAAS CH <b>77715</b> W03A	APP CRS <b>025°</b>	Rwy Idg <b>5350</b> TDZE <b>198</b> Apt Elev <b>198</b>
---------------------------------	------------------------	---

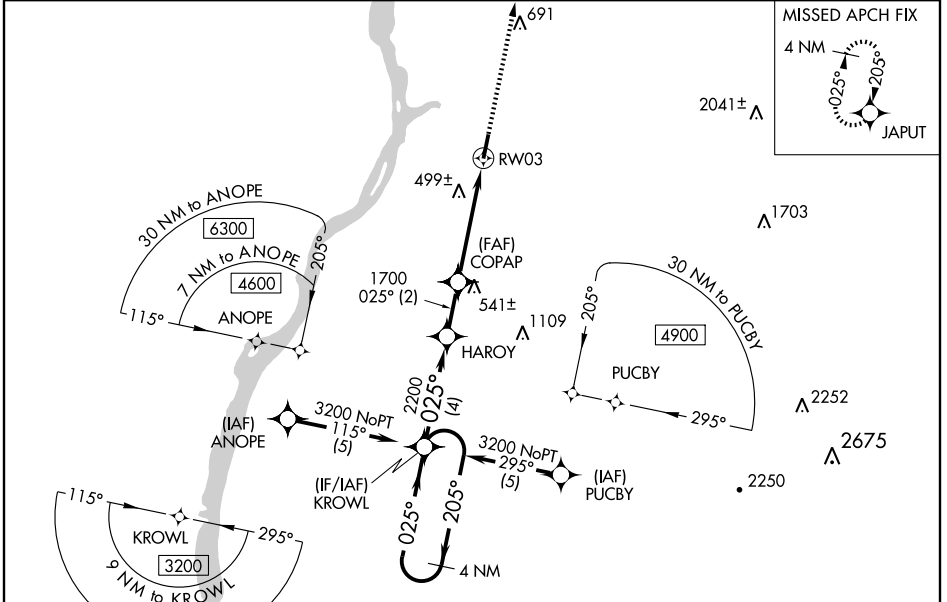
# RNAV (GPS) RWY 3

HUDSON/COLUMBIA COUNTY (1B1)

**▼** Baro-VNAV NA when using Albany altimeter setting. For uncompensated Baro-VNAV systems, LNAV/VNAV NA below -15°C (5°F) or above 48°C (118°F).  
**▲NA** DME/DME RNP-0.3 NA. Visibility reduction by helicopters NA. When local altimeter setting is not received, use Albany altimeter setting and increase all DA 76 feet and all MDA 80 feet, increase LPV all Cats, LNAV/VNAV all Cats, LNAV Cats C and D, and Circling Cat D visibility ¼ mile, and Circling Cat C visibility ½ mile.

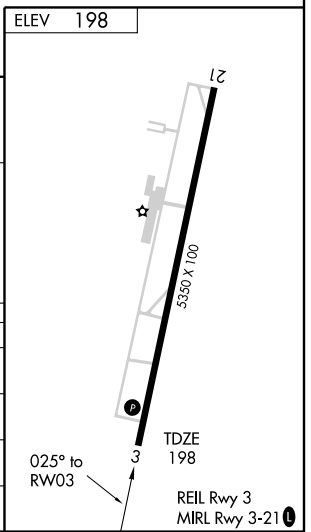
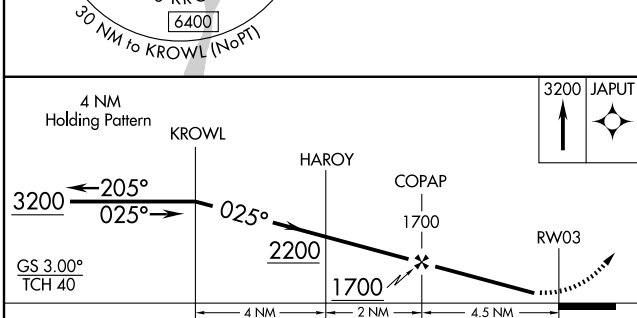
MISSED APPROACH: Climb to 3200 direct JAPUT and hold, continue climb-in-hold to 3200.

AWOS-3 <b>133.525</b>	ALBANY APP CON <b>132.825 307.2</b>	UNICOM <b>123.05(CTAF) 0</b>
--------------------------	--	---------------------------------



NE-2, 31 MAY 2012 to 28 JUN 2012

NE-2, 31 MAY 2012 to 28 JUN 2012



CATEGORY	A	B	C	D
LPV DA		500-1	302 (400-1)	
LNAV/VNAV DA		842-2¼	644 (700-2¼)	
LNAV MDA	760-1	562 (600-1)	760-1½ 562 (600-1½)	760-1¾ 562 (600-1¾)
CIRCLING	760-1 562 (600-1)	820-1 622 (700-1)	860-1¾ 662 (700-1¾)	920-2¼ 722 (800-2¼)

# TAKE-OFF MINIMUMS AND (OBSTACLE) DEPARTURE PROCEDURES

12152

## INSTRUMENT APPROACH PROCEDURE CHARTS

### IFR TAKE-OFF MINIMUMS AND (OBSTACLE) DEPARTURE PROCEDURES

#### Civil Airports and Selected Military Airports

ALL USERS: Airports that have Departure Procedures (DPs) designed specifically to assist pilots in avoiding obstacles during the climb to the minimum enroute altitude, and/or airports that have civil IFR take-off minimums other than standard, are listed below. Take-off Minimums and Departure Procedures apply to all runways unless otherwise specified. Altitudes, unless otherwise indicated, are minimum altitudes in MSL.

DPs specifically designed for obstacle avoidance are referred to as Obstacle Departure Procedures (ODPs) and are described below in text, or published separately as a graphic procedure. If the (Obstacle) DP is published as a graphic procedure, its name will be listed below, and it can be found in either this volume (civil), or the applicable military volume, as appropriate. Users will recognize graphic obstacle DPs by the term "(OBSTACLE)" included in the procedure title; e.g., TETON TWO (OBSTACLE). If not specifically assigned a departure procedure (i.e., ODP, SID, or radar vector) as part of an IFR clearance, an ODP may be required to be flown for obstacle clearance, even though not specifically stated in the IFR clearance. When doing so in this manner, ATC should be informed when the ODP being used contains a specified route to be flown, restrictions before turning, and/or altitude restrictions.

Graphic DPs designed by ATC to standardize traffic flows, ensure aircraft separation and enhance capacity are referred to as "Standard Instrument Departures (SIDs)". SIDs also provide obstacle clearance and are published under the appropriate airport section. ATC clearance must be received prior to flying a SID.

CIVIL USERS NOTE: Title 14 Code of Federal Regulations Part 91 prescribes standard take-off rules and establishes take-off minimums for certain operators as follows: (1) Aircraft having two engines or less - one statute mile. (2) Aircraft having more than two engines - one-half statute mile. These standard minima apply in the absence of any different minima listed below.

MILITARY USERS NOTE: Civil (nonstandard) take-off minima are published below. For military take-off minima, refer to appropriate service directives.

NAME	TAKE-OFF MINIMUMS	NAME	TAKE-OFF MINIMUMS
------	-------------------	------	-------------------

#### AKRON, NY

AKRON (9G3)

ORIG 81050 (FAA)

TAKE-OFF MINIMUMS: **Rwy 7, 25, 300-1.**

#### ALBANY, NY

ALBANY INTL (ALB)

AMDT 12 11237 (FAA)

TAKE-OFF MINIMUMS: **Rwy 10**, 300-1 orstd. w/ min. climb of 365' per NM to 600. **Rwy 28**, 300-1½ or std. w/min. climb of 458' per NM to 700.DEPARTURE PROCEDURE: **Rwy 10**, climb heading 110° to 2000 before turning north. **Rwy 19**, climb heading 191° to 1400 before proceeding on course. **Rwy 28**, climb heading 281° to 2000 before proceeding on course.

#### ALBANY, NY (CON'T)

ALBANY INTL (ALB)

NOTE: **Rwy 1**, trees beginning 1163' from DER, on and right of centerline, up to 100' AGL/367' MSL. Trees beginning 2109' from DER, 222' left of centerline, up to 100' AGL/370' MSL. Chimney on building 1095' from DER, 574' right of centerline, 35' AGL/314' MSL. **Rwy 19**, trees beginning 2510' from DER, 984' right of centerline, up to 100' AGL/394' MSL. **Rwy 10**, trees beginning 117' from DER, 341' right of centerline, up to 100' AGL/510' MSL. Trees beginning 589' from DER, 81' left of centerline, up to 100' AGL/437' MSL. Road beginning 304' from DER, 499' left of centerline, up to 15' AGL/315' MSL. **Rwy 28**, trees beginning 555' from DER, 458' right of centerline, up to 100' AGL/534' MSL. Trees beginning 149' from DER, 313' left of centerline, up to 100' AGL/506' MSL. Light poles beginning 330' from DER, 476' left of centerline, up to 20' AGL/311' MSL. Light pole 892' from DER, 587' right of centerline, 20' AGL/312' MSL. Building 694' from DER, 669' left of centerline, 35' AGL/325' MSL. Building 1037' from DER, 543' right of centerline, 35' AGL/323' MSL. Building 280' from DER, 408' left of centerline, 32' AGL/292' MSL. Electrical equipment 23' from DER, 427' right of centerline, 4' AGL/280' MSL. Terrain 1029' from DER, 595' left of centerline, 319' MSL.

12152

# TAKE-OFF MINIMUMS AND (OBSTACLE) DEPARTURE PROCEDURES

NE-2

# TAKE-OFF MINIMUMS AND (OBSTACLE) DEPARTURE PROCEDURES

12152

## ALBION, NY

PINE HILL (9G6)

TAKE-OFF MINIMUMS: **Rwy 10**, 300-1.DEPARTURE PROCEDURE: **Rwy 10**, climb runway heading to 1000 before proceeding on course.

## ANDOVER, NJ

AEROFLEX-ANDOVER (12N)

AMDT 1 03135 (FAA)

TAKE-OFF MINIMUMS: **Rwy 3**, 500-2 or std. with a min. climb of 310' per NM to 900. **Rwy 21**, 600-2 or std. with a min. climb of 256' per NM to 1000.DEPARTURE PROCEDURE: **Rwy 3**, climb runway heading to 1200 before proceeding on course. **Rwy 21**, climb runway heading to 1400 before proceeding on course.NOTE: **Rwy 3**, trees 4800' from departure end of runway, 1050' left of centerline, 100' AGL/803' MSL. **Rwy 21**, trees 715' from departure end of runway, 164' right of centerline, 84' AGL/667' MSL.

## ATLANTIC CITY, NJ

ATLANTIC CITY INTL (ACY)

ORIG 07074 (FAA)

NOTE: **Rwy 4**, tree 2185' from departure end of runway, 491' left of centerline, 50' AGL/124' MSL. **Rwy 13**, tree 1654' from departure end of runway, 814' right of centerline, 64' AGL/110' MSL. **Rwy 22**, building 530' from departure end of runway, 555' right of centerline, 15' AGL/75' MSL.

## BATAVIA, NY

GENESEE COUNTY AIRPORT (GVQ)

ORIG 07214 (FAA)

NOTE: **Rwy 28**, terrain 15' from departure end of runway, 72' left of centerline, 919' MSL. Terrain 19' from departure end of runway, 231' right of centerline, 916' MSL. Multiple trees beginning 608' from departure end of runway, 584' left of centerline, up to 100' AGL/1009' MSL. Tower 1789' from departure end of runway, 704' left of centerline, 100' AGL/1005' MSL.

## BELMAR-FARMINGDALE, NJ

MONMOUTH EXECUTIVE (BLM)

AMDT 2 12152 (FAA)

DEPARTURE PROCEDURE: **Rwy 32**, climb heading 325° to 1000 before turning right.NOTE: **Rwy 3**, trees beginning 29' from DER, 195' right of centerline, up to 60' AGL/209' MSL. Trees beginning 165' from DER, 99' left of centerline, up to 60' AGL/214' MSL. Vehicles on road, 309' from DER, left and right of centerline, up to 15' AGL/214' MSL. **Rwy 14**, pole, 29' from DER, 351' left of centerline, 34' AGL/156' MSL. Trees beginning 38' from DER, left and right of centerline, up to 56' AGL/202' MSL. **Rwy 21**, vehicles on roadway, 17' from DER, left and right of centerline, up to 15' AGL/169' MSL. Trees beginning 42' from DER, 260' right of centerline, up to 60' AGL/214' MSL. Trees beginning 99' from DER, left and right of centerline, up to 60' AGL/214' MSL. **Rwy 32**, vehicles on roadway, 24' from DER, 323' right of centerline, up to 15' AGL/121' MSL. Vehicles on roadway, 53' from DER, 367' right of centerline, up to 15' AGL/122' MSL. Vehicles on roadway, 81' from DER, 210' right of centerline, up to 15' AGL/123' MSL. Vehicles on roadway, 100' from DER, 109' right of centerline, up to 15' AGL/123' MSL. Trees beginning 230' from DER, 190' left of centerline, up to 62' AGL/164' MSL. Trees beginning 257' from DER, 203' right of centerline, up to 90' AGL/172' MSL. Trees beginning 1918' from DER, 51' right of centerline, up to 97' AGL/174' MSL.

## BERLIN, NJ

CAMDEN COUNTY (19N)

AMDT 1 93173 (FAA)

TAKE-OFF MINIMUMS: **Rwy 5**, 600-1½ or std. with a min. climb of 270' per NM to 600.DEPARTURE PROCEDURE: **Rwys 5, 23**, climb to 600 before turning on course.

## BINGHAMTON, NY

GREATER BINGHAMTON/EDWIN A. LINK  
FIELD (BGM)

ORIG 08157 (FAA)

NOTE: **Rwy 10**, trees beginning 143' from departure end of runway, 259' left of centerline, up to 29' AGL/1579' MSL. **Rwy 16**, trees beginning 162' from departure end of runway, 325' left of centerline, up to 100' AGL/1669' MSL. **Rwy 28**, trees beginning 157' from departure end of runway, 406' left of centerline, up to 52' AGL/1602' MSL. **Rwy 34**, antenna 216' from departure end of runway, 223' right of centerline, 93' AGL/1643' MSL.

## BLAIRSTOWN, NJ

BLAIRSTOWN (1N7)

AMDT 2 11069 (FAA)

TAKE-OFF MINIMUMS: **Rwy 7**, 500-3. **Rwy 25**, 600-3.DEPARTURE PROCEDURE: **Rwy 7**, climb heading 074° to 1600 before proceeding on course. **Rwy 25**, climb heading 254° to 2100 before proceeding on course.NOTE: **Rwy 7**, trees beginning at DER, 276' right of centerline, up to 100' AGL/599' MSL. Trees beginning at DER, 145' left of centerline, up to 100' AGL/599' MSL. **Rwy 25**, trees beginning at DER, 178' right of centerline, up to 100' AGL/559' MSL. Trees beginning at DER, 220' left of centerline, up to 100' AGL/759' MSL.

12152

# TAKE-OFF MINIMUMS AND (OBSTACLE) DEPARTURE PROCEDURES

NE-2

# TAKE-OFF MINIMUMS AND (OBSTACLE) DEPARTURE PROCEDURES

12152

## BROCKPORT, NY

LEDGEDALE AIRPARK (7G0)  
ORIG 09015 (FAA)

NOTE: **Rwy 10**, trees beginning 882' from departure end of runway, 568' left of centerline up to 100' AGL/764' MSL. **Rwy 28**, tree beginning 1820' from departure end of runway, 769' right of centerline up to 100' AGL/764' MSL. Trees beginning 3049' from departure end of runway, 1253' left of centerline up to 100' AGL/759' MSL.

## BUFFALO, NY

BUFFALO AIRFIELD (9G0)  
AMDT 1 08325 (FAA)

NOTE: **Rwy 6**, trees beginning 2296' from departure end of runway, 68' left of centerline, up to 100' AGL/770' MSL. Tree 4038' from departure end of runway, 1425' right of centerline, 100' AGL/779' MSL. Trees beginning 3080' from departure end of runway, 219' right of centerline, up to 100' AGL/769' MSL. **Rwy 24**, trees beginning 91' from departure end of runway, 208' right of centerline, up to 100' AGL/780' MSL. Trees beginning 868' from departure end of runway, 112' left of centerline, up to 100' AGL/750' MSL.

BUFFALO NIAGARA INTL (BUF)  
AMDT 5 07242 (FAA)

NOTE: **Rwy 5**, tree 648' from departure end of runway, 662' left of centerline, 65' AGL/751' MSL. Trees beginning 697' from departure end of runway, 385' right of centerline, up to 100' AGL/787' MSL. **Rwy 23**, trees, poles, building and pump beginning 6' from departure end of runway, 290' left of centerline, up to 40' AGL/721' MSL. Tree 3317' from departure end of runway, 916' right of centerline, 68' AGL/759' MSL. **Rwy 32**, multiple trees and a bush beginning 141' from departure end of runway, 66' left of centerline, up to 67' AGL/756' MSL. Multiple trees beginning 43' from departure end of runway, 90' right of centerline, up to 66' AGL/752' MSL.

## CALDWELL, NJ

ESSEX COUNTY (CDW)  
AMDT 2 11125 (FAA)

TAKE-OFF MINIMUMS: **Rwy 10**, NA - Obstacles. **Rwy 22**, 300-1 or std. w/min. climb of 613' per NM to 400.

DEPARTURE PROCEDURE: **Rwy 4**, climb heading 043° to 1000 before turning right. **Rwy 22**, climb heading 223° to 900 before turning left.

NOTE: **Rwy 4**, building, bushes and trees beginning 150' from DER, 157' left of centerline, up to 72' AGL/271' MSL. Trees and bushes beginning 170' from DER, 96' right of centerline, up to 54' AGL/253' MSL. **Rwy 22**, building and trees beginning 24' from DER, 9' left of centerline, up to 100' AGL/343' MSL. Trees, poles and building beginning 201' from DER, 113' right of centerline, up to 100' AGL/287' MSL. Localizer 364' from DER, on centerline, 183' MSL. **Rwy 28**, trees and light on building beginning 300' from DER, 14' right of centerline, up to 100' AGL/255' MSL. Trees, poles and buildings beginning 113' from DER, 15' left of centerline, up to 100' AGL/237' MSL.

## CANANDAIGUA, NY

CANANDAIGUA (D38)  
ORIG 97142 (FAA)

TAKE-OFF MINIMUMS: **Rwy 13**, 300-1 or std. with a min. climb of 230' per NM to 1100.

## CORTLAND, NY

CORTLAND COUNTY-CHASE FIELD (N03)  
AMDT 3 12152 (FAA)

TAKE-OFF MINIMUMS: **Rwy 6**, std. w/min. climb of 328' per NM to 2200, or 1500-3 for climb in visual conditions. **Rwy 24**, 500-2 or std. w/min. climb of 435' per NM to 1800.

DEPARTURE PROCEDURE: **Rwy 6**, climb heading 059° to 2200 before turning; or for climb in visual conditions: cross Cortland County-Chase Field Airport at or above 2500' MSL before proceeding on course. **Rwy 24**, climb heading 239° to 2200 before turning.

NOTE: **Rwy 6**, vehicles on roadway, 755' from DER, across centerline, 15' AGL/1234' MSL. Trees beginning 838' from DER, 415' right of centerline, up to 100' AGL/1299' MSL. Trees beginning 2114' from DER, 326' left of centerline, up to 100' AGL/1339' MSL. Tower 2.5 NM from DER, 595' right of centerline, 192' AGL/1624' MSL. **Rwy 24**, trees beginning 749' from DER, 94' right of centerline, up to 100' AGL/1439' MSL. Vehicles on roadway, 1364' from DER, across centerline, 17' AGL/1236' MSL. Trees beginning 1.01 NM from DER, 1872' right of centerline, up to 100' AGL/1559' MSL.

## CROSS KEYS, NJ

CROSS KEYS (17N)  
AMDT 1 09351 (FAA)

NOTE: **Rwy 9**, trees beginning 81' from DER, 76' right of centerline, up to 100' AGL/289' MSL. Trees beginning 1914' from DER, 834' left of centerline, up to 100' AGL/279' MSL. Pole 4369' from DER, 643' left of centerline, 147' AGL/303' MSL. **Rwy 27**, trees beginning 50' from DER, 20' right of centerline, up to 100' AGL/259' MSL. Tree 2099' from DER, 893' left of centerline, 100 AGL/249' MSL.

31 MAY 2012 to 28 JUN 2012

31 MAY 2012 to 28 JUN 2012

12152

# TAKE-OFF MINIMUMS AND (OBSTACLE) DEPARTURE PROCEDURES

NE-2

**TAKE-OFF MINIMUMS AND (OBSTACLE) DEPARTURE PROCEDURES**

12152

**DANSVILLE, NY**DANSVILLE MUNI (DSV)  
AMDT 2 09071 (FAA)

TAKE-OFF MINIMUMS: **Rwy 14**, std. w/min. climb of 482' per NM to 3000, or 2000-3 for climb in visual conditions. **Rwy 18**, std. w/min. climb of 430' per NM to 2700, or 600-2½ w/min. climb of 358' per NM to 2700, or 2000-3 for climb in visual conditions. **Rwy 32**, std. w/min. climb of 399' per NM to 2400, or 700-2½ w/min. climb of 321' per NM to 2400, or 2000-3 for climb in visual conditions. **Rwy 36**, std. w/min. climb of 446' per NM to 2600, or 400-1¼ w/min. climb of 375' per NM to 2600, or 2000-3 for climb in visual conditions.

DEPARTURE PROCEDURE: **Rwy 14**, climb heading 137° to 3000 or for climb in visual conditions cross Dansville Muni airport at or above 2500 MSL before proceeding on course.

**Rwy 18**, climb heading 178° to 2700 or for climb in visual conditions cross Dansville Muni airport at or above 2500 MSL before proceeding on course. **Rwy 32**, climb heading 317° to 2400 or for climb in visual conditions cross Dansville Muni airport at or above 2500 MSL before proceeding on course. **Rwy 36**, climb heading 358° to 2600 or for climb in visual conditions cross Dansville Muni airport at or above 2500 MSL before proceeding on course.

NOTE: **Rwy 14**, vehicle on roadway, at DER, 377' left of centerline, 15' AGL/675' MSL. Trees beginning 7725' from DER, 635' left of centerline, up to 50' AGL/1409' MSL. Vehicle on roadway, 174' from DER, 536' right of centerline, 15' AGL/675' MSL. Trees beginning 1.8 NM from DER, 94' right of centerline, 50' AGL/1349' MSL. **Rwy 18**, trees beginning 1.8 NM from DER, 908' left of centerline, up to 50' AGL/969' MSL. Trees beginning 4209' from DER, 109' right of centerline, up to 50' AGL/1209' MSL. **Rwy 32**, vehicle on roadway, 41' from DER, 470' left of centerline, 15' AGL/651' MSL. Trees beginning 8840' from DER, 1396' left of centerline, up to 50' AGL/1249' MSL. **Rwy 36**, trees beginning 5437' from DER, 574' right of centerline, up to 50' AGL/1269' MSL.

**DUNKIRK, NY**

CHAUTAUQUA COUNTY/ DUNKIRK (DKK)

TAKE-OFF MINIMUMS: **Rwys 15**, 400-2 or std. with a min. climb of 203' per NM to 1200.

DEPARTURE PROCEDURE: **Rwys 6, 15**, climb runway heading to 1200, then climbing left turn direct DKK VORTAC before proceeding on course. **Rwys 24, 33**, climb runway heading to 1200, then climbing right turn direct DKK VORTAC before proceeding on course. Southbound aircraft cross DKK VORTAC at or above 2300.

**EAST HAMPTON, NY**

EAST HAMPTON (HTO)

AMDT 2 99056 (FAA)

TAKE-OFF MINIMUMS: **Rwy 34**, 300-1.

NOTE: **Rwy 4**, 40' AGL trees 200' from departure end of runway. **Rwy 22**, 42' AGL trees 120' from departure end of runway. **Rwy 16**, 48' AGL trees 130' right of departure end of runway.

**ELLENVILLE, NY**

JOSEPH Y RESNICK (N89)

ORIG 99028 (FAA)

TAKE-OFF MINIMUMS: **Rwy 4**, 1000-2. **Rwy 22**, 1600-2 or std. with a min. climb of 450' per NM to 1800.

DEPARTURE PROCEDURE: **Rwy 4**, climb runway heading to 5000 before proceeding on course. **Rwy 22**, climb on heading 240° to 4000 before proceeding on course.

**ELMIRA, NY**

ELMIRA/CORNING RGNL (ELM)

TAKE-OFF MINIMUMS: **Rwys 5, 23**, NA-ATC. **Rwy 6**, 600-2½ or std. with a min. climb of 325' per NM to 1700. **Rwy 10**, std. with a min. climb of 449' per NM to 1600, or 2000-3 for climb in visual conditions. **Rwy 24**, std. with a min. climb of 423' per NM to 2400, or 2000-3 for climb in visual conditions. **Rwy 28**, std. with a min. climb of 636' per NM to 2100, or 2000-3 for climb in visual conditions.

DEPARTURE PROCEDURE: **Rwy 6**, climb heading 062° to 2400 before proceeding on course. **Rwy 10**, climb heading 101° to 2500 before proceeding on course. For climb in visual conditions: cross Elmira/Corning Rgnl Airport at or above 2800' MSL before proceeding on course. **Rwy 24**, climb heading 242° to 2600 before proceeding on course. For climb in visual conditions: cross Elmira/Corning Rgnl Airport at or above 2800' MSL before proceeding on course. **Rwy 28**, climb heading 281° to 2400 before proceeding on course. For climb in visual conditions: cross Elmira/Corning Rgnl Airport at or above 2800' MSL before proceeding on course.

NOTE: **Rwy 6**, multiple trees beginning 984' from departure end of runway, 228' left of centerline, up to 34' AGL/1023' MSL. Multiple trees 2.1 NM from departure end of runway, 3938' left of centerline, up to 100' AGL/1499' MSL. Multiple trees beginning 809' from departure end of runway, 102' right of centerline, up to 39' AGL/1028' MSL. **Rwy 10**, poles and multiple trees beginning 551' from departure end of runway, 38' left of centerline, up to 49' AGL/998' MSL. Pole and multiple trees beginning 130' from departure end of runway, 125' right of centerline, up to 63' AGL/1012' MSL. **Rwy 24**, sign and multiple trees beginning 870' from departure end of runway, 528' left of centerline, up to 48' AGL/1006' MSL. **Rwy 28**, multiple trees beginning 1341' from departure end of runway, 289' left of centerline, up to 73' AGL/1012' MSL. Tower and multiple trees beginning 440' from departure end of runway, 472' right of centerline, up to 92' AGL/1031' MSL.

**ENDICOTT, NY**

TRI-CITIES (CZG)

AMDT 4 10154 (FAA)

TAKE-OFF MINIMUMS: **Rwy 3**, std. w/min. climb of 515' per NM to 1700 or 700-2 with min. climb of 242 to 2000 or 1600-2½ for climb in visual conditions. **Rwy 21**, std. w/min. climb of 604' per NM to 2100 or 900-3 with min. climb of 470 to 2200 or 1600-2½ for climb in visual conditions.

DEPARTURE PROCEDURE: **Rwy 3**, climb heading 036° to 2000 before proceeding on course or for climb in visual conditions: cross Tri-Cities airport at or above 2300 before proceeding on course. **Rwy 21**, climb heading 216° to 2200 before proceeding on course or for climb in visual conditions: cross Tri-Cities airport at or above 2300 before proceeding on course.

NOTE: **Rwy 3**, tree 1' from DER, 418' left of centerline, 78' AGL/907' MSL. Multiple trees and train on tracks beginning 163' from DER, 56' left of centerline, up to 110' AGL/1469' MSL. Multiple trees and tower beginning 1699' from DER, 259' right of centerline, up to 106' AGL/915' MSL. **Rwy 21**, multiple trees, pole and tower beginning 51' from DER, 63' left of centerline, up to 84' AGL/1473' MSL. Multiple trees beginning 751' from DER, 73' right of centerline, up to 86' AGL/1175' MSL.

12152

**TAKE-OFF MINIMUMS AND (OBSTACLE) DEPARTURE PROCEDURES**

NE-2

# TAKE-OFF MINIMUMS AND (OBSTACLE) DEPARTURE PROCEDURES

12152

## FARMINGDALE, NY

REPUBLIC (FRG)

AMDT 6 10154 (FAA)

TAKE-OFF MINIMUMS: **Rwy 1**, 200 -1/4 or std. w/ min. climb of 207' per NM to 300, or alternatively, with standard take-off minimums and a normal 200'/NM climb gradient, takeoff must occur no later than 1300' prior to DER. **Rwy 32**, 300 -1/4 or std. w/ min. climb of 213' per NM to 400, or alternatively, with standard take-off minimums and a normal 200'/NM climb gradient. Take-off must occur no later than 1500' prior to DER.

DEPARTURE PROCEDURE: **Rwy 1**, climb heading 013° to 700 before turning left. **Rwy 32**, climb heading 326° to 700 before turning right.

NOTE: **Rwy 1**, fence, elevator, buildings, tanks and trees beginning 3' from DER, 194' left of centerline, up to 69' AGL/144' MSL. Stack, chimneys, antennas, hangars, buildings, poles and trees beginning 144' from DER, 246' right of centerline, up to 80' AGL/155' MSL. Tank 5912' from DER, 1427' left of centerline, 139' AGL/235' MSL. **Rwy 14**, road, pole, and trees beginning 182' from DER, 24' right of centerline, up to 70' AGL/120' MSL. Poles and trees beginning 534' from DER, 97' left of centerline, up to 74' AGL/124' MSL. **Rwy 19**, sign, hangar, poles, and trees beginning 78' from DER, 14' right of centerline, up to 65' AGL/115' MSL. Buildings, poles, and trees beginning 182' from DER, 71' left of centerline, up to 75' AGL/125' MSL. Tower 2454' from DER, 318' right of centerline, 84' AGL/142' MSL.

**Rwy 32**, fence, poles, and trees beginning 146' from DER, 23' right of centerline, up to 69' AGL/139' MSL. Traffic signal, poles, antenna, and trees beginning 330' from DER, 124' left of centerline, up to 72' AGL/142' MSL. Tank 1.35 NM from DER, 1122' left of centerline, 107' AGL/297' MSL.

## FISHERS ISLAND, NY

ELIZABETH FIELD (0B8)

AMDT 2 98337 (FAA)

TAKE-OFF MINIMUMS: **Rwy 7**, 300-1 or std. with a min. climb of 300' per NM to 300.

NOTE: **Rwy 7**, 15' AGL bunker 25' from departure end of runway, right of centerline.

## FULTON, NY

OSWEGO COUNTY (FZY)

AMDT 1 01137 (FAA)

TAKE-OFF MINIMUMS: **Rwy 6**, 300-1 or std. with a min. climb gradient of 270' per NM to 900.

NOTE: **Rwy 6**, hill 1400' from departure end of runway, on centerline 50' AGL/549' MSL. **Rwy 15**, trees 1700' from departure end of runway, on centerline 85' AGL/560' MSL. **Rwy 24**, trees 1350' from departure end of runway, on centerline 60' AGL/517' MSL. **Rwy 33**, road 400' from departure end of runway, on centerline 15' AGL/462' MSL.

## GLENS FALLS, NY

FLOYD BENNETT MEMORIAL (GFL)

AMDT 1 10350 (FAA)

TAKE-OFF MINIMUMS: **Rwy 1**, std. w/ min. climb of 385' per NM to 2500 or 2000-3 for climb in visual conditions. **Rwy 12**, std. w/ min. climb of 304' per NM to 1800 or 2000-3 for climb in visual conditions.

**Rwy 30**, std. w/ min. climb of 345' per NM to 2500 or 2000-3 for climb in visual conditions.

DEPARTURE PROCEDURE: **Rwy 1**, climbing right turn to 2500 direct GANSE (GF) LOM before proceeding on course. For climb in visual conditions: cross Floyd Bennett Memorial Airport at or above 2200 MSL before proceeding on course. **Rwy 12**, climbing right turn to 1800 direct GANSE (GF) LOM before proceeding on course. For climb in visual conditions: cross Floyd Bennett Memorial Airport at or above 2200 MSL before proceeding on course.

**Rwy 19**, climb heading 192° to 1400 before proceeding on course. **Rwy 30**, climbing left turn to 2500 direct GANSE (GF) LOM before proceeding on course. For climb in visual conditions: cross Floyd Bennett Memorial Airport at or above 2200 MSL before proceeding on course.

NOTE: **Rwy 1**, trees beginning 1185' from DER, 65' left of centerline, up to 88' AGL/503' MSL. Trees beginning 1423' from DER, 24' right of centerline, up to 88' AGL/535' MSL. Multiple towers beginning 5140' from DER, 5' left of centerline, up to 69' AGL/498' MSL. **Rwy 12**, trees beginning 852' from DER, 115' left of centerline, up to 77' AGL/416' MSL. Vehicles on road and trees beginning 378' from DER, 3' right of centerline, up to 80' AGL/429' MSL. **Rwy 19**, trees beginning 703' from DER, 121' left of centerline, up to 65' AGL/454' MSL. Bush and trees beginning 73' from DER, 46' right of centerline, up to 77' AGL/456' MSL. **Rwy 30**, trees beginning 89' from DER, 20' left of centerline, up to 93' AGL/458' MSL. Trees beginning 1281' from DER, 32' right of centerline, up to 89' AGL/472' MSL.

31 MAY 2012 to 28 JUN 2012

31 MAY 2012 to 28 JUN 2012

12152

# TAKE-OFF MINIMUMS AND (OBSTACLE) DEPARTURE PROCEDURES

NE-2

# TAKE-OFF MINIMUMS AND (OBSTACLE) DEPARTURE PROCEDURES

12152

## HAMILTON, NY

HAMILTON MUNI (VGC)

AMDT 2 08353 (FAA)

TAKE-OFF MINIMUMS: **Rwy 17**, 600-3 w/ min. climb of 288' per NM to 2100 or 1300-2½ for climb in visual conditions. **Rwy 35**, 400-1 w/ min. climb of 364' per NM to 2300 or 1300-2½ for climb in visual conditions.

DEPARTURE PROCEDURE: **Rwy 17**, climb heading 170° to 2100 or for climb in visual conditions, cross Hamilton Muni airport at or above 2300 before proceeding on course. **Rwy 35**, climb heading 350° to 2300 or for climb in visual conditions, cross Hamilton Muni airport at or above 2300 before proceeding on course.

NOTE: **Rwy 17**, multiple trees beginning 37' from departure end of runway, 163' right of centerline, up to 100' AGL/1219' MSL. Railroad 94' from departure end of runway, 217' left of centerline, 23' AGL/1162' MSL.

Multiple trees beginning 815' from departure end of runway, 583' left of centerline, up to 100' AGL/1219' MSL. Multiple trees beginning 1861' from departure end of runway, 939' right of centerline, up to 100' AGL/1459' MSL. Multiple trees beginning 1.6 NM from departure end of runway, 3026' left of centerline, up to 100' AGL/1659' MSL. Multiple trees beginning 2.6 NM from departure end of runway, 1078' right of centerline, up to 100' AGL/1679' MSL. **Rwy 35**, railroad 27' from departure end of runway, 464' right of centerline, 23' AGL/1162' MSL. Multiple trees beginning 855' from departure end of runway, 604' right of centerline, up to 100' AGL/1279' MSL. Multiple trees beginning 2444' from departure end of runway, 356' left of centerline, up to 100' AGL/1219' MSL. Multiple trees beginning 4371' from departure end of runway, 1630' right of centerline, up to 100' AGL/1439' MSL.

## HAMMONTON, NJ

HAMMONTON MUNI (N81)

ORIG 09015 (FAA)

DEPARTURE PROCEDURE: **Rwy 3**, climb heading 034° to 600 before turning left.

NOTE: **Rwy 21**, trees 1572' from departure end of runway, 526' left of centerline, 100' AGL/163' MSL. Trees 3201' from departure end of runway, 911' right of centerline, 100' AGL/166' MSL.

## HORNELL, NY

HORNELL MUNI (HTF)

AMDT 5 12152 (FAA)

TAKE-OFF MINIMUMS: **Rwy 18**, std. w/ min. climb of 420' per NM to 2200 or 1500-3 for climb in visual conditions. **Rwy 36**, NA-Obstacles.

DEPARTURE PROCEDURE: **Rwy 18**, climb heading 165° to 2900 before proceeding on course or for climb in visual conditions cross Hornell Muni airport at or above 2600 MSL before proceeding on course.

NOTE: **Rwy 18**, trees 1696' from DER, 143' left of centerline, up to 92' AGL/1252' MSL. Trees 5644' from DER, 1746' right of centerline, up to 100' AGL/1499' MSL.

## HUDSON, NY

COLUMBIA COUNTY (1B1)

ORIG 08213 (FAA)

DEPARTURE PROCEDURE: **Rwy 3**, climb heading 025° to 1500 before turning. **Rwy 21**, climb heading 190° to 2100 before turning right.

NOTE: **Rwy 3**, vehicles beginning 393' from departure end of runway, 19' left of centerline, up to 17' AGL/226' MSL. Trees beginning 856' from departure end of runway, 587' right of centerline, up to 80' AGL/279' MSL. Trees beginning 3292' from departure end of runway, 574' left of centerline, up to 80' AGL/339' MSL. **Rwy 21**, fence 104' from departure end of runway, 372' left of centerline, up to 44' AGL/203' MSL. Trees beginning 400' from departure end of runway, 41' right of centerline, up to 80' AGL/280' MSL. Trees beginning 563' from departure end of runway, 61' left of centerline, 80' AGL/289' MSL.

## ITHACA, NY

ITHACA TOMPKINS RGNL (ITH)

AMDT 5 10098(FAA)

TAKE-OFF MINIMUMS: **Rwy 14**, Std. w/ min. climb of 350' per NM to 2400 or 1500-3 for climb in visual conditions. **Rwys 15, 33**, NA-Environmental.

DEPARTURE PROCEDURE: **Rwy 14**, Climb heading 145° to 2400 before turning left or for climb in visual conditions cross Ithaca Tompkins Rgnl airport at or above 2400 before proceeding on course. **Rwy 32**, Climb heading 325° to 1600 before proceeding on course.

NOTE: **Rwy 14**, Trees beginning 570' from DER, 525' right of centerline, up to 100' AGL/1187' MSL. Tree 1833' from DER, 768' left of centerline, 60' AGL/1146' MSL. Pole 1953' from DER, 896' right of centerline, 70' AGL/1151' MSL. Trees, towers, and terrain beginning 2.1 NM from DER, 329' right of centerline, up to 100' AGL/1959' MSL. **Rwy 32**, rising terrain 171' from DER, 474' right of centerline, up to 1083' MSL. Trees beginning 1255' from DER, 158' right of centerline, up to 80' AGL/1170' MSL. Trees beginning 2756' from DER, 433' left of centerline, up to 90' AGL/1151' MSL.

31 MAY 2012 to 28 JUN 2012

31 MAY 2012 to 28 JUN 2012

12152

# TAKE-OFF MINIMUMS AND (OBSTACLE) DEPARTURE PROCEDURES

NE-2

# TAKE-OFF MINIMUMS AND (OBSTACLE) DEPARTURE PROCEDURES

12152

## JAMESTOWN, NY CHAUTAUQUA COUNTY/JAMESTOWN (JHW)

NOTE: **Rwy 7**, multiple trees beginning 495' from departure end of runway, 525' left of centerline, up to 30' AGL/1749' MSL. **Rwy 13**, rising terrain beginning 200' from departure end of runway, left and right of centerline, up to 1740' MSL. Multiple trees beginning 228' from departure end of runway, 232' left of centerline, up to 47' AGL/1795' MSL. Vent on building 527' from departure end of runway, 628' right of centerline, 38' AGL/1768' MSL. Vehicles on road, 737' from departure end of runway, 329' right of centerline, 15' AGL/1756' MSL. Vent on building 1003' from departure end of runway, 426' right of centerline, 38' AGL/1768' MSL. Obstacle light on building 1232' from departure end of runway, 309' right of centerline, 38' AGL/1768' MSL. Multiple trees beginning 831' from departure end of runway, 77' right of centerline, up to 90' AGL/1799' MSL. **Rwy 25**, antenna on building 424' from departure end of runway, 262' left of centerline, 14' AGL/1733' MSL. Tree 731' from departure end of runway, 652' left of centerline, 72' AGL/1761' MSL. **Rwy 31**, vehicles on road 0' from departure end of runway, 403' right of centerline, 15' AGL/1734' MSL. Rising terrain beginning abeam departure end of runway, left and right of centerline, up to 1749' MSL. Multiple trees beginning 404' from departure end of runway, 127' right of centerline, up to 62' AGL/1801' MSL. Multiple trees beginning 577' from departure end of runway, 630' left of centerline, up to 44' AGL/1793' MSL. Tree 3695' from departure end of runway, 728' left of departure end of runway, 35' AGL/1834' MSL. Tree 6082' from departure end of runway, 846' left of centerline, 100' AGL/1879' MSL.

## JOHNSTOWN, NY FULTON COUNTY (NYO) AMDT 2 10266 (FAA)

NOTE: **Rwy 10**, trees beginning 83' from DER, 62' left of centerline, up to 57' AGL/936' MSL. Trees beginning 206' from DER, 176' right of centerline, up to 43' AGL/922' MSL. **Rwy 28**, trees beginning 310' from DER, 48' left of centerline, up to 72' AGL/921' MSL. Trees beginning 23' from DER, 54' right of centerline, up to 73' AGL/892' MSL.

## KINGSTON, NY KINGSTON-ULSTER (20N) ORIG 96312 (FAA)

TAKE-OFF MINIMUMS: **Rwy 33**, 300-1.  
DEPARTURE PROCEDURE: **Rwy 15**, climb to 3000 via PWL R-316 to TRESA INT before proceeding on course. **Rwy 33**, climbing right turn to 3000 on heading 170° and PWL R-316 to TRESA INT before proceeding on course.

## LAKE PLACID, NY LAKE PLACID (LKP) ORIG 03191 (FAA)

TAKE-OFF MINIMUMS: **Rwy 14**, NA-obstacles.  
**Rwy 32**, std. with a min. climb of 420' per NM to 4000.  
DEPARTURE PROCEDURE: **Rwy 32**, climbing left turn to 5000 via heading 304° to intercept SLK R-180 to SLK VOR/DME before proceeding on course.

## LAKEWOOD, NJ LAKEWOOD (N12) AMDT 1 99196 (FAA)

TAKE-OFF MINIMUMS: **Rwy 6, 24**, 400-2 or std. with a min. climb of 330' per NM to 600.

## LE ROY, NY LE ROY (5G0) ORIG 09155 (FAA)

TAKE-OFF MINIMUMS: **Rwy 28**, std. w/ min. climb of 302' per NM to 1400 or 1200-2½ for climb in visual conditions.

DEPARTURE PROCEDURE: **Rwy 28**, for climb in visual conditions: Cross Le Roy airport at or above 1800 MSL before proceeding on course.

NOTE: **Rwy 10**, train on railroad tracks and trees beginning 37' from DER, 145' left of centerline, up to 100' AGL/859' MSL. Fence 326' from DER, on centerline, 11' AGL/781' MSL. Trees and vehicles beginning 365' from DER, 60' right of centerline, up to 100' AGL/879' MSL. **Rwy 28**, trees, vehicles, fence, AAO and terrain beginning 50' from DER, 96' left of centerline, up to 200' AGL/1109' MSL. Train on railroad tracks, trees, AAO and terrain beginning 36' from DER, 73' right of centerline, up to 200' AGL/1079' MSL.

## LINCOLN PARK, NJ LINCOLN PARK (N07) ORIG-A 11069 (FAA)

TAKE-OFF MINIMUMS: **Rwy 1**, 900-2. **Rwy 19**, 300-1.

DEPARTURE PROCEDURE: **Rwy 1**, climb visually over airport to 1000 before proceeding on course. **Rwy 19**, climb runway heading to 1000 before proceeding on course.

NOTE: **Rwy 19**, towers 4200' from DER, 96' right of centerline, 132' AGL/307' MSL.

## LINDEN, NJ LINDEN (LDJ) AMDT 2A 11125 (FAA)

TAKE-OFF MINIMUMS: **Rwy 9**, 300-1¼ or std. w/min. climb of 259' per NM to 400. **Rwy 27**, 300-1.

NOTE: **Rwy 9**, pole and building 667' from DER, 53' right of centerline, up to 60' AGL/77' MSL. Multiple stacks 1.3 NM from DER, 1135' right of centerline, up to 275' AGL/287' MSL. **Rwy 27**, stack 825' from DER, 655' right of centerline, 86' AGL/113' MSL. Multiple buildings 2197' from DER, left and right of centerline, up to 110' AGL/140' MSL.

## LOCKPORT, NY NORTH BUFFALO SUBURBAN (0G0) ORIG 97142 (FAA)

TAKE-OFF MINIMUMS: **Rwys 10, 28**, 300-1.  
NOTE: **Rwy 10**, 46' AGL tree 353' from departure end of runway, 75' right of centerline. **Rwy 28**, 60' AGL tree 650' from departure end of runway, 350' right of centerline.

## LUMBERTON, NJ FLYING W (N14) ORIG 86072 (FAA)

TAKE-OFF MINIMUMS: **Rwys 1, 19**, 300-1.

31 MAY 2012 to 28 JUN 2012

31 MAY 2012 to 28 JUN 2012

12152

# TAKE-OFF MINIMUMS AND (OBSTACLE) DEPARTURE PROCEDURES

NE-2

# TAKE-OFF MINIMUMS AND (OBSTACLE) DEPARTURE PROCEDURES

12152

## MALONE, NY

MALONE-DUFORT (MAL)

AMDT 1 99084 (FAA)

TAKE-OFF MINIMUMS: **Rwy 14**, 300-1 or std. with a min. climb of 220' per NM to 1100. **Rwy 23**, 500-1 or std. with a min. climb of 240' per NM to 1400.

DEPARTURE PROCEDURE: **Rwys 5, 14, 23, 32**, aircraft departing V-282 northbound and V-98 northeastbound climb via heading 050° to 2500 before proceeding on course. All other directions climb to 2000 via heading 300° before proceeding on course.

## MANVILLE, NJ

CENTRAL JERSEY RGNL (47N)

AMDT 3 07298 (FAA)

DEPARTURE PROCEDURE: **Rwy 7**, climb heading 069° to 800 before turning left.

NOTE: **Rwy 7**, multiple trees and a building beginning 29' from departure end of runway, 1266' left of centerline, up to 92' AGL/132' MSL. Multiple trees and poles beginning 238' from departure end of runway, 74' right of centerline, up to 94' AGL/154' MSL. **Rwy 25**, multiple trees beginning 183' from departure end of runway, 33' right of centerline, up to 93' AGL/173' MSL. Multiple trees beginning 212' from departure end of runway, 181' left of centerline, up to 83' AGL/163' MSL.

## MASSENA, NY

MASSENA INTL-RICHARDS FIELD (MSS)

AMDT 8 09351 (FAA)

TAKE-OFF MINIMUMS: **Rwy 23**, 300-2½ or std. with a min. climb of 240' per NM to 800.

NOTE: **Rwy 5**, antenna on building 291' from DER, 267' right of centerline, 9' AGL/238' MSL. Obstruction light on localizer 347' from DER, on centerline, 7' AGL/241' MSL. Trees beginning 551' from DER, 514' left of centerline, up to 75' AGL/324' MSL. Trees beginning 825' from DER, 516' right of centerline, up to 56' AGL/292' MSL. **Rwy 9**, bushes and trees beginning 371' from DER, 142' left of centerline, up to 64' AGL/303' MSL. Trees beginning 784' from DER, 51' right of centerline, up to 73' AGL/312' MSL. **Rwy 23**, trees, buildings, and poles beginning 1002' from DER, 249' left of centerline, up to 76' AGL/257' MSL. Trees beginning 2233' from DER, 878' right of centerline, up to 60' AGL/277' MSL. Light on tower 2.1 NM from DER, 2453' right of centerline, 388' AGL/596' MSL. **Rwy 27**, trees beginning 341' from DER, 341' left of centerline, up to 81' AGL/292' MSL. Trees beginning 499' from DER, 289' right of centerline, up to 100' AGL/329' MSL.

## MC GUIRE FLD, (JOINT BASE MC GUIRE DIX LAKEHURST) (KWRI)

WRIGHTSTOWN, NJ. . . . .ORIG, 12040

TAKE-OFF OBSTACLES: **Rwy 6**, Trees 1432' to 1935' from DER, 426' to 1312' right of centerline, 94' AGL/192' MSL. Trees 2405' from DER, 448' right of centerline, 79' AGL/174' MSL. Trees 2663' from DER, 1186' left of centerline, 79' AGL/177' MSL. Trees 3285' from DER, 362' right of centerline, 97' AGL/185' MSL. Trees 3287' from DER, 341' left of centerline, 94' AGL/195' MSL. Trees 3653' from DER, 944' right of centerline, 103' AGL/194' MSL.

**Rwy 24**, Trees 1973' from DER, 980' left of centerline, 85' AGL/199' MSL. **Rwy 36**, C-17 aircraft on romeo row 1999' from DER, 1124' right of centerline, 55' AGL/196' MSL.

## MIDDLETOWN, NY

RANDALL (06N)

AMDT 2 00279 (FAA)

TAKE-OFF MINIMUMS: **Rwy 26**, 700-2 or std. with a min. climb of 260' per NM to 2400.

DEPARTURE PROCEDURE: **Rwy 26**, climb runway heading to 2400 before proceeding on course.

## MILLBROOK, NY

SKY ACRES (44N)

AMDT 1 98337 (FAA)

TAKE-OFF MINIMUMS: **Rwy 17**, 900-1 or std. with a min. climb of 390' per NM to 1700. **Rwy 35**, 300-1 or std. with a min. climb of 250' per NM to 1300.

DEPARTURE PROCEDURE: **Rwy 17**, climb runway heading to 1700, then climbing right turn to intercept IGN R-147, to IGN VOR/DME. Cross IGN VOR/DME at or above 3000. **Rwy 35**, climb runway heading to 1300, then climbing left turn to intercept IGN R-009 to IGN VOR/DME. Cross IGN VOR/DME at or above 3000.

## MILLVILLE, NJ

MILLVILLE MUNI (MIV)

AMDT 2 06159 (FAA)

NOTE: **Rwy 10**, multiple trees beginning 14' from departure end of runway, 498' right of centerline, up to 49' AGL/134' MSL. **Rwy 14**, multiple trees beginning 20' from departure end of runway, 167' left and 139' right of centerline, up to 72' AGL/154' MSL. **Rwy 28**, multiple trees beginning 28' from departure end of runway, 144' left and 167' right of centerline, up to 80' AGL/154' MSL. **Rwy 32**, multiple trees beginning 34' from departure end of runway, 341' left and 273' right of centerline, up to 71' AGL/152' MSL.

## MONTAUK, NY

MONTAUK (MTP)

AMDT 2 98281 (FAA)

DEPARTURE PROCEDURE: **Rwy 24**, climbing right turn to 3000 direct GON VOR/DME before proceeding on course.

NOTES: **Rwy 6**, 37' dune 200' from departure end of runway. **Rwy 24**, 35' powerline 40' from departure end of runway.

## MONTGOMERY, NY

ORANGE COUNTY (MGJ)

AMDT 2 00279 (FAA)

TAKE-OFF MINIMUMS: **Rwy 3**, 500-2 or std. with a min. climb of 440' per NM to 900. **Rwy 8**, 300-1 or std. with a min. climb of 230' per NM to 600. **Rwy 21**, 500-1 or std. with a min. climb of 210' per NM to 800. **Rwy 26**, 400-1 or std. with a min. climb of 270' per NM to 900.

DEPARTURE PROCEDURE: **Rwy 3**, climb runway heading to 2100 before proceeding on course. **Rwys 8, 21, 26**, climb runway heading to 1000 before proceeding on course.

12152

# TAKE-OFF MINIMUMS AND (OBSTACLE) DEPARTURE PROCEDURES

NE-2

# TAKE-OFF MINIMUMS AND (OBSTACLE) DEPARTURE PROCEDURES

12152

## MONTICELLO, NY

SULLIVAN COUNTY INTL (MSV)

DEPARTURE PROCEDURE: **Rwy 33**, climb straight ahead to 2500 before departing on course.

## MORRISTOWN, NJ

MORRISTOWN MUNI (MMU)

AMDT 6 11293 (FAA)

TAKE-OFF MINIMUMS: **Rwy 13**, 300-1½ or std. w/min. climb of 227' per NM to 500, or alternatively, with standard takeoff minimums and a normal 200' per NM climb gradient, takeoff must occur no later than 1900' prior to DER. **Rwy 23**, 400-2 or std. w/min. climb of 394' per NM to 700. **Rwy 31**, 500-1 with minimum climb of 342' per NM to 1600.

DEPARTURE PROCEDURE: **Rwy 5**, climb heading 049° to 700 before turning westbound. **Rwy 13**, climb heading 127° to 800 before turning northbound. **Rwy 23**, climb heading 229° to 900 before turning westbound.

NOTE: **Rwy 5**, trees beginning 16' from DER, 300' left/right of centerline, up to 87' AGL/286' MSL. **Rwy 13**, trees, power lines, bushes beginning 50' from DER, 32' left/right of centerline, up to 84' AGL/283' MSL. Tank 1.2 NM from DER, 1830' right of centerline, 135' AGL/395' MSL. **Rwy 23**, trees and buildings beginning 80' from DER, 48' left/right of centerline, up to 91' AGL/290' MSL. **Rwy 31**, trees, power lines, bushes beginning 2' from DER, 6' left/right of centerline, up to 150' AGL/329' MSL.

## MOUNT HOLLY, NJ

SOUTH JERSEY RGNL (VAY)

ORIG 09155 (FAA)

TAKE-OFF MINIMUMS: **Rwy 26**, 300-2½ or std. w/min. climb of 205' per NM to 500. Alternatively, with standard take-off minimums and a normal 200'/NM climb gradient, take-off must occur no later than 1300' prior to DER.

NOTE: **Rwy 8**, trees beginning 15' from DER, 32' right of centerline, up to 100' AGL/179' MSL. Trees beginning 631' from DER, 339' left of centerline, up to 100' AGL/159' MSL. **Rwy 26**, building 522' from DER, 604' right of centerline, 30' AGL/89' MSL. Building 540' from DER, 546' left of centerline, 30' AGL/89' MSL. Vehicle on road 650' from DER, on centerline, 17' AGL/67' MSL. Trees beginning 1599' from DER, 5' right of centerline, up to 100' AGL/179' MSL. Trees beginning 418' from DER, 408' left of centerline, up to 100' AGL/179' MSL. Tower 1.9 NM from DER, 1712' right of centerline, 179' AGL/348' MSL.

## NEW YORK, NY

JOHN F. KENNEDY INTL (JFK)

AMDT 8 11293 (FAA)

TAKE-OFF MINIMUMS: **Rwy 13R**, 300-1½ or std. w/min. climb of 250' per NM to 300. **Rwy 31L**, std. w/min. climb of 250' per NM to 2400. **Rwy 31 R**, std. w/min. climb of 230' per NM to 2400.

NOTE: **Rwy 4L**, taxiing aircraft and fences beginning 249' from DER, 316' left of centerline, up to 79' AGL/93' MSL. Taxiing aircraft 706' from DER, 472' right of centerline, up to 79' AGL/93' MSL. **Rwy 4R**, trees beginning 1294' from DER, 687' left of centerline, up to 62' AGL/76' MSL. Trees beginning 523' from DER, 613' right of centerline, up to 19' AGL/33' MSL. **Rwy 13L**, electrical equipment and glideslope antenna beginning 105' from DER, 140' left of centerline, up to 26' AGL/40' MSL. **Rwy 13R**, glideslope antenna 420' from DER, 405' left of centerline, 36' AGL/45' MSL. Fence and transmission tower beginning 157' from DER, 5' right of centerline, up to 139' AGL/140' MSL. Tank 1.1 NM from DER, 2115' right of centerline, 215' AGL/227' MSL. **Rwy 31R**, fence, vehicles on road, poles, and trees beginning 282' from DER, 14' left of centerline, up to 55' AGL/67' MSL. Fence, approach lights, poles, and trees beginning 190' from DER, 8' right of centerline, up to 29' AGL/43' MSL.

## LA GUARDIA (LGA)

AMDT 9A 12152 (FAA)

TAKE-OFF MINIMUMS: **Rwy 13**, 400-2½ or std. w/min. climb of 280' per NM to 500. **Rwy 22**, 300-2½ or std. w/min. climb of 210' per NM to 400, or alternatively, with standard takeoff minimums and a normal 200' per NM climb gradient, takeoff must occur no later than 1100' prior to DER. **Rwy 31**, 300-1½ or std. w/min. climb of 330' per NM to 500.

DEPARTURE PROCEDURE: **Rwy 4**, climb heading 044° to 800 before proceeding on course. **Rwy 13**, climb heading 134° to 800 before proceeding westbound. **Rwy 22**, climb heading 224° to 2200 before proceeding westbound. **Rwy 31**, climb heading 314° to 1400 before proceeding westbound.

NOTE: **Rwy 13**, localizer 392' from DER, on centerline, 18' AGL/19' MSL. Stack, fences, and buildings beginning 97' from DER, 171' left of centerline, up to 83' AGL/103' MSL. Fences, buildings, and trees beginning 28' from DER, 415' right of centerline, up to 21' AGL/22' MSL. Stack 4934' from DER, 1513' left of centerline, 172' AGL/181' MSL. Building 1.9 NM from DER, 758' right of centerline, 280' AGL/345' MSL. **Rwy 22**, buildings and trees beginning 165' from DER, 150' left of centerline, up to 72' AGL/101' MSL. Blast fence, fence, stack on building, navaid and trees beginning 109' from DER, 138' right of centerline, up to 55' AGL/104' MSL. Tower 1.8 NM from DER, 566' right of centerline, 222' AGL/302' MSL. **Rwy 31**, stack 1.2 NM from DER, 2015' left of centerline, 250' AGL/268' MSL.

31 MAY 2012 to 28 JUN 2012

31 MAY 2012 to 28 JUN 2012

12152

# TAKE-OFF MINIMUMS AND (OBSTACLE) DEPARTURE PROCEDURES

NE-2



12152

**NEW YORK, NY (CON'T)**

LONG ISLAND MAC ARTHUR (ISP)

AMDT 5 11181 (FAA)

NOTE: **Rwy 6**, trees beginning 611' from DER, 191' right of centerline, up to 76' AGL/186' MSL. Trees beginning 1391' from DER, 76' left of centerline, up to 79' AGL/189' MSL. Pole 2458' from DER, 1127' left of centerline, 65' AGL/175' MSL. **Rwy 10**, trees beginning 950' from DER, 259' right of centerline, up to 49' AGL/132' MSL. Trees beginning 276' from DER, 263' left of centerline, up to 54' AGL/139' MSL.

Antenna on pole 1141' from DER, 455' left of centerline, 48' AGL/133' MSL. **Rwy 15L**, trees beginning 706' from DER, 271' right of centerline, up to 56' AGL/136' MSL. Trees beginning 1134' from DER, 214' left of centerline, up to 50' AGL/132' MSL.

**Rwy 15R**, trees beginning 1267' from DER, 68' left of centerline, up to 56' AGL/136' MSL. **Rwy 24**, pole 788' from DER, 656' right of centerline, 40' AGL/120' MSL.

**Rwy 28**, tree 643' from DER, 391' right of centerline, 36' AGL/126' MSL. Pole 918' from DER, 367' right of centerline, 30' AGL/118' MSL. Light pole 991' from DER, 244' right of centerline, 27' AGL/117' MSL. Rod 822' from DER, 442' left of centerline, 36' AGL/121' MSL. Trees beginning 1101' from DER, 280' left of centerline, up to 48' AGL/128' MSL. Pole 1254' from DER, 89' left of centerline, 29' AGL/124' MSL. **Rwy 33L**, trees beginning 37' from DER, 5' right of centerline, up to 80' AGL/185' MSL. Trees beginning 180' from DER, 27' left of centerline, up to 83' AGL/188' MSL. Poles beginning 699' from DER, 505' left of centerline, up to 40' AGL/140' MSL. Tower 1528' from DER, 387' left of centerline, 61' AGL/164' MSL. Post 459' from DER, 251' left of centerline, 11' AGL/111' MSL. **Rwy 33R**, trees beginning 1025' from DER, 273' right of centerline, up to 45' AGL/135' MSL. Tower 2996' from DER, 79' right of centerline, 108' AGL/210' MSL. Obstruction light on GS 325' from DER, 484' right of centerline, 28' AGL/118' MSL. Trees beginning 789' from DER, 266' left of centerline, up to 48' AGL/133' MSL. Obstruction light WSK 726' from DER, 583' left of centerline, 29' AGL/114' MSL.

**NEWARK, NJ**

NEWARK LIBERTY INTL (EWR)

AMDT 5 10042 (FAA)

TAKE-OFF MINIMUMS: **Rwy 4L**, std. w/min. climb of 383' per NM to 2500. **Rwy 4R**, std. w/min. climb of 375' per NM to 2500. **Rwy 11**, std. w/min. climb of 361' per NM to 2500. **Rwy 22L**, std. w/min. climb of 337' per NM to 2500. **Rwy 22R**, std. w/min. climb of 331' per NM to 2500. **Rwy 29**, 400-2 or std. w/min. climb of 444' per NM to 500.

DEPARTURE PROCEDURE: **Rwy 4R**, climb heading 039° to 500 before turning right. **Rwy 22L**, climb heading 219° to 500 before turning left. **Rwy 29**, climb heading 288° to 800 before turning Eastbound.

NOTE: **Rwy 4L**, tower, light, and multiple trees beginning 211' from DER, 198' left of centerline, up to 70' AGL/89' MSL. DME antenna and pole beginning 881' from DER, 418' right of centerline, up to 121' AGL/131' MSL.

**Rwy 4R**, DME antenna, tree, and multiple towers beginning 530' from DER, 477' left of centerline, up to 61' AGL/82' MSL. Tower, sign, tree, multiple buildings and poles beginning 1134' from DER, 153' right of centerline, up to 121' AGL/131' MSL. **Rwy 11**, pole, tree, and multiple signs beginning 6' from DER, 158' right of centerline, up to 31' AGL/50' MSL. Sign, tree, road, fence, building, and multiple poles beginning 82' from DER, 2' left of centerline, up to 49' AGL/68' MSL. **Rwy 22L**, pole 8' from DER, 261' left of centerline, 7' AGL/16' MSL. **Rwy 22R**, light and multiple trees beginning 1829' from DER, 307' right of centerline, up to 55' AGL/69' MSL. Building 1.4 NM from DER, 1872' left of centerline, 200' AGL/227' MSL. **Rwy 29**, multiple poles, trees, signs and buildings beginning 209' from DER, 242' left of centerline, up to 110' AGL/120' MSL. Tree multiple signs and poles beginning 689' from DER, 66' right of centerline, up to 273' AGL/358' MSL. Building 6029' from DER, 1624' right of centerline, 273' AGL/357' MSL. Building 1.5 NM from DER, 2071' right of centerline, 202' AGL/328' MSL.

31 MAY 2012 to 28 JUN 2012

31 MAY 2012 to 28 JUN 2012

12152



NE-2

# TAKE-OFF MINIMUMS AND (OBSTACLE) DEPARTURE PROCEDURES

12152

## NEWBURGH, NY

STEWART INTL (SWF)

AMDT 5 08325 (FAA)

TAKE-OFF MINIMUMS: **Rwy 16**, std. w/min. climb of 255' per NM to 2000 or 1500-2½ for climb in visual conditions. **Rwy 27**, 300-1 or std. w/min. of 366' per NM to 800. **Rwy 34**, 300-1¼ or std. w/min. climb of 503' per NM to 800.

DEPARTURE PROCEDURE: **Rwy 9**, climb heading 092° to 2100 before turning south. **Rwy 16**, climb heading 163° to 2000 before proceeding on course or for climb in visual conditions cross Stewart Intl airport at or above 1800 before proceeding on course. **Rwy 27**, climb heading 272° to 1200 before turning south.

NOTE: **Rwy 9**, trees beginning 730' from departure end of runway, 23' left of centerline, up to 66' AGL/566' MSL.

Bush 172' from departure end of runway, 193' left of centerline, up to 43' AGL/483' MSL. **Rwy 16**, trees 785' from departure end of runway, 461' left of centerline, up to 86' AGL/466' MSL. Trees beginning 1254' from departure end of runway, 563' right of centerline, up to 112' AGL/492' MSL. **Rwy 27**, trees beginning 685' from departure end of runway, 525' left of centerline, up to 23' AGL/543' MSL. Fence 430' from departure end of runway, 528' left of centerline, 19' AGL/529' MSL. Middle marker 701' from departure end of runway, on runway centerline, 5' AGL/515' MSL. **Rwy 34**, trees beginning 608' from departure end of runway, 21' left of centerline, up to 91' AGL/611' MSL. Terrain and trees beginning 77' from departure end of runway, 71' right of centerline, up to 92' AGL/612' MSL.

## NIAGARA FALLS, NY

NIAGARA FALLS INTL (IAG)

TAKE-OFF MINIMUMS: **Rwys 10L, 10R, 24**, 300-1 or std. with a min. climb of 300' per NM to 1700.

DEPARTURE PROCEDURE: **Rwy 6**, climb heading 060° to 1200 before proceeding on course. **Rwys 10L, 10R, 24** climb runway heading to 1700 before proceeding on course. **Rwys 28L, 28R**, climb heading 280° to 1200 before proceeding on course.

NOTE: **Rwy 6**, tree 1737' from departure end of runway, 308' left of centerline, 60' AGL/647' MSL. **Rwy 28L**, trees beginning 1668' from departure end of runway, 244' right of centerline, up to 74' AGL/654' MSL. Trees beginning 1337' from departure end of runway, 62' left of centerline, up to 63' AGL/646' MSL. Bush 625' from departure end of runway, 172' right of centerline, 26' AGL/611' MSL. **Rwy 28R**, trees beginning 866' from departure end of runway, 105' right of centerline, up to 100' AGL/690' MSL. Trees beginning 837' from departure end of runway, 321' left of centerline, up to 87' AGL/667' MSL.

## NORWICH, NY

LT. WARREN EATON (OIC)

AMDT 2 96284 (FAA)

TAKE-OFF MINIMUMS: **Rwys 1, 19**, 700-2 or std. with a min. climb of 400' per NM to 1900.

DEPARTURE PROCEDURE: **Rwys 1, 19**, climb runway heading to 2500 before proceeding on course.

## OGDENSBURG, NY

OGDENSBURG INTL (OGS)

AMDT 1 09351 (FAA)

NOTE: **Rwy 9**, bushes beginning 72' from DER, 321' right of centerline, up to 18' AGL/317' MSL. Trees beginning 780' from DER, 254' right of centerline, up to 72' AGL/376' MSL. Trees beginning 1177' from DER, 59' left of centerline, up to 59' AGL/383' MSL. **Rwy 27**, sign 6' from DER, 394' left of centerline, 4' AGL/288' MSL. Terrain 55' from DER, 313' right of centerline, 288' MSL. Obstruction light pole 376' from DER, 370' left of centerline, 22' AGL/311' MSL. Hanger 504' from DER, 545' left of centerline, 28' AGL/317' MSL. Antenna on hanger 510' from DER, 489' left of centerline, 37' AGL/326' MSL. Obstruction light on airport beacon 584' from DER, 474' left of centerline, 40' AGL/329' MSL. Trees beginning 896' from DER, 251' left of centerline, up to 52' AGL/353' MSL. Trees beginning 997' from DER, 252' right of centerline, up to 52' AGL/371' MSL.

## OLD BRIDGE, NJ

OLD BRIDGE (3N6)

AMDT 1 09239 (FAA)

TAKE-OFF MINIMUMS: **Rwy 24**, 300-2½ or std. w/min. climb of 223' per NM to 400.

NOTE: **Rwy 6**, trees beginning 49' from DER, 4' left and right of centerline, up to 100' AGL/199' MSL. **Rwy 24**, trees beginning 47' from DER, 46' left and right of centerline, up to 100' AGL/299' MSL.

## OLEAN, NY

CATTARAUGUS COUNTY-OLEAN (OLE)

AMDT 2 97198 (FAA)

TAKE-OFF MINIMUMS: **Rwy 16**, 300-1 or std. with a min. climb of 340' per NM until passing 2500. **Rwy 34**, 300-1 or std. with a min. climb of 300' per NM until passing 2500.

## ONEONTA, NY

ONEONTA MUNI (N66)

TAKE-OFF MINIMUMS: **Rwys 6, 24**, 300-1.

## PEDRICKTOWN, NJ

SPITFIRE AERODROME (7N7)

AMDT 1 11293 (FAA)

TAKE-OFF MINIMUMS: **Rwy 25**, NA-obstacles.

DEPARTURE PROCEDURE: **Rwy 7**, climb heading 074° to 800 before turning right.

NOTE: **Rwy 7**, trees beginning at DER, 132' left of centerline, up to 100' AGL/144' MSL. Trees beginning 3288' from DER, 962' right of centerline, up to 100' AGL/149' MSL.

## PENNYAN, NY

PENN YAN (PEO)

AMDT 3 98253 (FAA)

TAKE-OFF MINIMUMS: **Rwy 1**, 500-2 or std. with a min. climb of 230' per NM to 1700. **Rwy 19**, 600-2 or std. with a min. climb of 230' per NM to 1700. **Rwy 28**, 600-2, or std. with a min. climb of 320' per NM to 1700.

NOTE: **Rwy 10**, 40' AGL trees at departure end of runway, 96' right of centerline.

31 MAY 2012 to 28 JUN 2012

31 MAY 2012 to 28 JUN 2012

12152

# TAKE-OFF MINIMUMS AND (OBSTACLE) DEPARTURE PROCEDURES

NE-2

# TAKE-OFF MINIMUMS AND (OBSTACLE) DEPARTURE PROCEDURES

12152

## PITTSTOWN, NJ

ALEXANDRIA (N85)  
AMDT 1 92175 (FAA)

TAKE-OFF MINIMUMS: **Rwy 8**, 400-1 or std. w/ 400' per NM to 900. **Rwy 13**, 300-1 or std. w/ 460' per NM to 700. **Rwy 31**, 600-1 or std. w/ 340' per NM to 1200.

## SKY MANOR (N40)

AMDT 2 12152 (FAA)

NOTE: **Rwy 7**, vehicles on roadway beginning 38' from DER, 283' left of centerline, up to 15' AGL/ 574' MSL. Powerlines beginning 2008' from DER, left and right of centerline, up to 122' AGL/652' MSL. Trees beginning 2550' from DER, 756' left of centerline, up to 100' AGL/ 657' MSL. Trees beginning 4763' from DER, 1716' right of centerline, up to 100' AGL/699' MSL. **Rwy 25**, vehicles on roadway beginning 51' from DER, 375' left of centerline, up to 15' AGL/574' MSL. Trees beginning 1965' from DER, 139' right of centerline, up to 100' AGL/ 679' MSL. Trees beginning 2261' from DER, 961' left of centerline, up to 100' AGL/659' MSL.

## PLATTSBURGH, NY

PLATTSBURGH INTL (PBG)

DEPARTURE PROCEDURE: **Rwy 17**, climb heading 172° to 2500 before turning on course. **Rwy 35**, climb heading 352° to 2800 before turning on course.

NOTE: **Rwy 17**, tree 1844' from departure end of runway, 966' right of centerline, 87' AGL/237' MSL. Tree 2289' from departure end of runway, 937' left of centerline, 75' AGL/222' MSL. **Rwy 35**, numerous trees beginning 1602' from departure end of runway, 501' left of centerline, up to 63' AGL/293' MSL. Tree, 2270' from departure end of runway, 944' left of centerline, 104' AGL/334' MSL. Tree 2035' from departure end of runway, 1014' right of centerline, 107' AGL/307' MSL.

## POTSDAM, NY

POTSDAM MUNI/DAMON FLD (PTD)

ORIG 09295 (FAA)

NOTE: **Rwy 6**, trees beginning 229' from DER, 122' right of centerline, up to 100' AGL/569' MSL. Trees beginning 926' from DER, 322' left of centerline, up to 100' AGL/579' MSL. **Rwy 24**, trees beginning 776' from DER, 370' right of centerline, up to 100' AGL/559' MSL. Building 549' from DER, 395' left of centerline, 40' AGL/509' MSL. Tree 846' from DER, 471' left of centerline, 100' AGL/559' MSL.

## POUGHKEEPSIE, NY

DUTCHESS COUNTY (POU)

AMDT 1A 11125 (FAA)

TAKE-OFF MINIMUMS: **Rwy 6**, 500 - 2 ½ or std. w/ min. climb of 277' per NM to 600. **Rwy 15**, 400 - 1 ½ or std. w/min. climb of 346' per NM to 700. **Rwy 33**, 400 - 1 ½ or std. w/ min. climb of 242' per NM to 500. DEPARTURE PROCEDURE: **Rwy 6**, climb direct IGN VOR/DME, then via IGN R-070 to 2000 before proceeding on course. **Rwy 15**, climb to 600 then climbing left turn to 1000 direct IGN VOR/DME before proceeding on course. **Rwy 24**, climb to 2000 via IGN R-250 before proceeding on course. **Rwy 33**, climb to 600 then climbing right turn to 1000 direct IGN VOR/DME before proceeding on course.

NOTE: **Rwy 6**, fence 12' from DER, 305' right of centerline 5' AGL/165' MSL. Trees beginning 283' from DER, 48' right of centerline, up to 89' AGL/467' MSL. Obstruction light on tower 369' from DER, 400' right of centerline, 74' AGL/234' MSL. Trees beginning 777' from DER, 30' left of centerline, up to 93' AGL/442' MSL. Fence 12' from DER, 305' right of centerline, 24' AGL/165' MSL. **Rwy 15**, trees beginning 283' from DER, 137' right of centerline, up to 117' AGL/417' MSL. Trees beginning 1253' from DER, 19' left of centerline, up to 94' AGL/528' MSL. Fence 229' from DER, 253' right of centerline, 24' AGL/174' MSL. Obstruction lights beginning 494' from DER, 160' left of centerline, 58' AGL/218' MSL. Pole 5291' from DER, 28' right of centerline, 40' AGL/310' MSL. **Rwy 33**, trees beginning 231' from DER, 168' right of centerline, up to 104' AGL/323' MSL. Trees beginning 229' from DER, 83' left of centerline, up to 84' AGL/334' MSL. Antenna on hangar 124' from DER, 332' left of centerline, 39' AGL/189' MSL. Tank 6796' from DER, 35' right of centerline, 110' AGL/360' MSL.

## PRINCETON (ROCKY HILL), NJ

PRINCETON (39N)

AMDT 2 06327 (FAA)

TAKE-OFF MINIMUMS: **Rwy 10**, 300-2 or std. with a min. climb of 340' per NM to 600.

NOTE: **Rwy 10**, multiple terrain beginning 61' from departure end of runway, 7' left of centerline, 0' AGL/ 168' MSL. Tank 1462' from departure end of runway, 699' left of centerline, 130' AGL/270' MSL. Tower 1.5 NM from departure end of runway, 1013' left of centerline, 175' AGL/460' MSL. Road 400' from departure end of runway, on centerline, 17' AGL/184' MSL. **Rwy 28**, tree 565' from departure end of runway, 634' left of centerline, up to 100' AGL/219' MSL. Terrain 154' from departure end of runway, 253' left of centerline, 0' AGL/128' MSL. Terrain 390' from departure end of runway, 554' left of centerline, 0' AGL/ 132' MSL.

31 MAY 2012 to 28 JUN 2012

31 MAY 2012 to 28 JUN 2012

12152

# TAKE-OFF MINIMUMS AND (OBSTACLE) DEPARTURE PROCEDURES

NE-2

# TAKE-OFF MINIMUMS AND (OBSTACLE) DEPARTURE PROCEDURES

12152

## READINGTON, NJ

SOLBERG-HUNTERDON (N51)

AMDT 1 09211 (FAA)

TAKE-OFF MINIMUMS: **Rwy 31**, std. w/ min. climb of 405' per NM to 1400 or 1300-2½ for climb in visual conditions.

DEPARTURE PROCEDURE: **Rwy 31**, for climb in visual conditions; cross Solberg-Hunterdon airport at or above 1300 before proceeding on course.

NOTE: **Rwy 4**, tree 907' from DER, 712' left of centerline, 100' AGL/279' MSL. Trees beginning 431' from DER, 82' right of centerline, up to 100' AGL/279' MSL. **Rwy 13**, tree 47' from DER, 453' left of centerline, 100' AGL/279' MSL. Tree 88' from DER, 178' right of centerline, 100' AGL/279' MSL. **Rwy 22**, tree 185' from DER, 350' left of centerline, 100' AGL/299' MSL. Trees beginning 103' from DER, 95' right of centerline, up to 100' AGL/299' MSL. **Rwy 31**, trees beginning 372' from DER, 40' left of centerline, up to 100' AGL/378' MSL. Tree 257' from DER, 441' right of centerline, 100' AGL/299' MSL.

## ROBBINSVILLE, NJ

TRENTON-ROBBINSVILLE (N87)

AMDT 1 92009 (FAA)

TAKE-OFF MINIMUMS: **Rwy 29**, 300-1 or std. with a min. climb of 280' per NM to 400.

DEPARTURE PROCEDURE: **Rwy 29**, climb runway heading to 800 before turning right.

## ROCHESTER, NY

GREATER ROCHESTER INTL (ROC)

AMDT 7 11349 (FAA)

TAKE-OFF MINIMUMS: **Rwy 22**, 400-2¾ or std. w/ min. climb of 240' per NM to 1100. **Rwy 10**, std. w/ min. climb of 250' per NM to 900 or 1000-2½ for climb in visual conditions. **Rwy 7**, 300-1¾ or std. w/ min. climb of 206' per NM to 900, or alternatively, with standard takeoff minimums and a normal 200' per NM climb gradient, takeoff must occur no later than 1300' prior to DER.

DEPARTURE PROCEDURE: **Rwy 4**, climb heading 042° to 1200 before turning left. **Rwy 10**, for climb in visual conditions: cross Greater Rochester Intl airport at or above 1400 before proceeding on course.

NOTE: **Rwy 4**, tower 1806' from DER, 816' right of centerline, 60' AGL/611' MSL. Tree 2081' from DER, 531' left of centerline, 53' AGL/612' MSL. **Rwy 22**, tree 1997' from DER, 832' right of centerline, 68' AGL/587' MSL. Tower 2.2 NM from DER, 3550' right of centerline, 412' AGL/934' MSL. Tree 3026' from DER, 935' left of centerline, 97' AGL/621' MSL. **Rwy 28**, railroad beginning 326' from DER, 539' right of centerline, 23' AGL/577' MSL. Trees beginning 887' from DER, 112' right of centerline, up to 88' AGL/632' MSL. Towers and trees beginning 807' from DER, 148' left of centerline, up to 87' AGL/626' MSL.

**Rwy 10**, tree, poles and vehicles beginning 949' from DER, 112' right of centerline, up to 82' AGL/616' MSL. Vehicles, trees, dome beginning 139' from DER, 4' left of centerline, up to 213' AGL/756' MSL. **Rwy 7**, dome 1.4 NM from DER, 1164' right of centerline, 213' AGL/756' MSL. Trees beginning 2732' from DER, 426' left of centerline, up to 78' AGL/622' MSL. **Rwy 25**, tower and poles beginning 1523' from DER, 330' left of centerline, up to 82' AGL/617' MSL.

## ROME, NY

GRIFFISS INTL (RME)

AMDT 1 10098 (FAA)

DEPARTURE PROCEDURE: **Rwy 15**, climb heading 147° to 1000 before turning left. **Rwy 33**, climb heading 327° to 1400 before turning right.

NOTE: **Rwy 15**, trees beginning 2306' from DER, 405' left of centerline, up to 92' AGL/590' MSL.

## SARANAC LAKE, NY

ADIRONDACK RGNL (SLK)

AMDT 6 84061 (FAA)

TAKE-OFF MINIMUMS: **Rwy 5**, 800-1 or std. with a min. climb of 230' per NM to 2500. **Rwy 9**, 600-2.

**Rwy 23**, 600-1 or std. with a min. climb of 240' per NM to 2300.

DEPARTURE PROCEDURE: **Rwys 5, 9**, climb to 2500 via SLK R-080, then climbing left turn direct SLK VOR so as to cross SLK VOR at 3000 or above before proceeding on course. **Rwy 23**, climbing right turn to 4000 via heading 250° before proceeding on course. **Rwy 27**, climb runway heading to 2300 before proceeding on course.

## SARATOGA SPRINGS, NY

SARATOGA COUNTY (5B2)

AMDT 3A 09127 (FAA)

TAKE-OFF MINIMUMS: **Rwy 32**, 400-2¾ or std. w/ min. climb of 250' per NM to 1000.

DEPARTURE PROCEDURE: **Rwy 5**, climb heading 025° to 1300 before proceeding on course. **Rwy 14**, climb heading 143° to 1000 before proceeding on course. **Rwy 23**, climb heading 233° to 1000 before proceeding on course. **Rwy 32**, climbing left turn to 2200 heading 230° before proceeding on course.

NOTE: **Rwy 5**, trees beginning 799' from DER, 50' left of centerline up to 84' AGL/503' MSL. Trees beginning 849' from DER, 133' right of centerline, up to 87' AGL/507' MSL. **Rwy 14**, trees beginning 427' from DER, 161' right of centerline up to 100' AGL/529' MSL. Trees beginning 516' from DER, 550' left of centerline up to 100' AGL/529' MSL. **Rwy 23**, trees beginning 196' from DER, 13' right of centerline up to 110' AGL/544' MSL. Trees beginning 843' from DER, 34' left of centerline up to 96' AGL/530' MSL. **Rwy 32**, trees beginning 8497' from DER, 579' right of centerline up to 100' AGL/809' MSL.

## SCHENECTADY, NY

SCHENECTADY COUNTY (SCH)

AMDT 4 97114 (FAA)

TAKE-OFF MINIMUMS: **Rwy 4**, 300-1 or std. with a min. climb of 220' per NM to 600. **Rwy 28**, 1200-2 or std. with a min. climb of 240' per NM to 2000.

NOTE: **Rwy 4**, 459' trees 80' from departure end of runway, 470' left of centerline.

12152

# TAKE-OFF MINIMUMS AND (OBSTACLE) DEPARTURE PROCEDURES

NE-2



## TAKE-OFF MINIMUMS AND (OBSTACLE) DEPARTURE PROCEDURES



12152

## SENECA FALLS, NY

FINGER LAKES RGNL (0G7)  
ORIG 09127 (FAA)TAKE-OFF MINIMUMS: **Rwy 1**, 300-2 or std. w/ min. climb of 275' per NM to 1000.NOTE: **Rwy 1**, trees, vehicle on road and tower beginning 401' from DER, 407' right of centerline, up to 306' AGL/756' MSL. Trees and pole beginning 571' from DER, 332' left of centerline, up to 73' AGL/ 528' MSL. **Rwy 19**, trees and building beginning 238' from DER, 294' right of centerline, up to 68' AGL/557' MSL. Building, trees, poles, bushes and vehicle on road beginning 189' from DER, 270' left of centerline, up to 57' AGL/556' MSL.

## SHIRLEY, NY

BROOKHAVEN (HWV)  
ORIG 07130 (FAA)TAKE-OFF MINIMUMS: **Rwys 6, 33**, NA-Noise abatement.NOTE: **Rwy 15**, trees beginning 173' from departure end of runway, 376' right of centerline, up to 60' AGL/ 124' MSL. Trees beginning 40' from departure end of runway, 281' left of centerline, up to 60' AGL/124' MSL. **Rwy 24**, trees beginning 199' from departure end of runway, 497' left of centerline, up to 60' AGL/ 148' MSL. Trees beginning 604' from departure end of runway, 597' right of centerline, up to 60' AGL/133' MSL.

## SIDNEY, NY

SIDNEY MUNI (N23)  
AMDT 4 09071 (FAA)TAKE-OFF MINIMUMS: **Rwy 7**, std. with a min. climb of 328' per NM to 2500 or 1600-3 for climb in visual conditions. **Rwy 25**, 700-1.DEPARTURE PROCEDURE: **Rwy 7**, climb heading 071° to 2500 before proceeding on course, for climb in visual conditions: Cross Sidney Muni airport at or above 2500 MSL before proceeding on course. **Rwy 25**, climb heading 251° to 2000 before proceeding on course.NOTE: **Rwy 7**, trees and vehicle on road beginning 379' from DER, 22' left of centerline, up to 200' AGL/ 2039' MSL. Trees and terrain beginning 1844' from DER, 17' right of centerline, up to 100' AGL/1779' MSL. **Rwy 25**, trees beginning 867' from DER, 45' left of centerline, up to 100' AGL/1679' MSL. Trees and vehicle on road beginning 57' from DER, 82' right of centerline, up to 100' AGL/1539' MSL.

## SKANEATELES, NY

SKANEATELES AERO DROME (6B9)  
ORIG 81218 (FAA)TAKE-OFF MINIMUMS: **Rwys 10, 28**, 300-1.

## SOMERVILLE, NJ

SOMERSET (SMQ)  
AMDT 3 08353 (FAA)TAKE-OFF MINIMUMS: **Rwys 8, 17, 26, 35**, NA-Environmental. **Rwy 12**, std. w/ min. climb of 400' per NM to 1000 or 700-3 w/ min. climb of 285' per NM to 1400, or 1100-2½ for climb in visual conditions. **Rwy 30**, std. w/ min. climb of 500' per NM to 600 or 300-2 or min. climb of 205' per NM to 1600, or 1100-2½ for climb in visual conditions.DEPARTURE PROCEDURE: **Rwy 12**, climb heading 122° to 1000 before proceeding on course or for climb in visual conditions cross Somerset Airport at or above 1100 before proceeding on course. **Rwy 30**, climb heading 302° to 1300 before proceeding on course or for climb in visual conditions cross Somerset Airport at or above 1100 before proceeding on course.NOTE: **Rwy 12**, trees beginning at departure end of runway, 345' left of centerline, up to 100' AGL/219' MSL. Trees beginning 600' from departure end of runway, left to right of centerline, up to 100' AGL/219' MSL. Trees beginning 3188' from departure end of runway, left to right of centerline, up to 100' AGL/279' MSL. **Rwy 30**, trees beginning at departure end of runway, 85' right of centerline, up to 100' AGL/199' MSL. Trees beginning at departure end of runway, 110' left of centerline, up to 99' AGL/199' MSL. Trees beginning 1451' from departure end of runway, left to right of centerline, up to 100' AGL/ 199' MSL. Trees beginning 2748' from departure end of runway, 1147' left of centerline, up to 100' AGL/259' MSL.

## SOUTH BETHLEHEM, NY

SOUTH ALBANY (4B0)  
ORIG 09099 (FAA)TAKE-OFF MINIMUMS: **Rwy 1**, 300-1½ or std. w/ min. climb of 290' per NM to 600. **Rwy 19**, std. w/ min. climb of 415' per NM to 2000 or 1700-1½ for climb in visual conditions.DEPARTURE PROCEDURE: **Rwy 1**, climb heading 008° to 2000 before proceeding on course. **Rwy 19**, climb via heading 188° to 2000 or for climb in visual conditions; cross South Albany airport at or above 1700 before proceeding on course. Do not exceed 180 knots until crossing South Albany airport on course.NOTE: **Rwy 1**, vehicles on road beginning 315' from DER, left to right of centerline, up to 15' AGL/234' MSL. Vehicles on road 17' from DER, 467' left of centerline, 15' AGL/224' MSL. Trees 523' from DER, 425' right of centerline, up to 100' AGL/299' MSL. Stacks 1.3 NM from DER, 1522' right of centerline, 195' AGL/435' MSL. **Rwy 19**, trains beginning 23' from DER, left and right of centerline, 23' AGL/318' MSL.

## STORMVILLE, NY

STORMVILLE (N69)  
ORIG 86072 (FAA)TAKE-OFF MINIMUMS: **Rwy 6**, 1200-1. **Rwy 24**, 300-1. DEPARTURE PROCEDURE: **Rwy 6**, climbing left turn direct IGN VOR/DME, cross IGN VOR/DME at or above 2000. **Rwy 24**, climbing right turn direct IGN VOR/DME, cross IGN VOR/DME at or above 2000.

31 MAY 2012 to 28 JUN 2012

31 MAY 2012 to 28 JUN 2012

12152



TAKE-OFF MINIMUMS AND (OBSTACLE) DEPARTURE PROCEDURES



NE-2

# TAKE-OFF MINIMUMS AND (OBSTACLE) DEPARTURE PROCEDURES

12152

## SUSSEX, NJ

SUSSEX (FWN)

AMDT 2 82357 (FAA)

TAKE-OFF MINIMUMS: **Rwy 3**, 700-1. **Rwy 21**, 500-1.DEPARTURE PROCEDURE: **Rwy 3**, climb runway heading to 1200, then climbing right turn to 3000 direct SAX VORTAC, then climb on course. **Rwy 21**, climb runway heading to 1500, then climb on course.

## SYRACUSE, NY

SYRACUSE HANCOCK INTL (SYR)

AMDT 7 98001 (FAA)

DEPARTURE PROCEDURE: **Rwy 10**, climb runway heading to 1500 before turning southbound. **Rwy 15**, climb runway heading to 2800 before turning southbound. **Rwy 28**, climb runway heading to 1100 before turning southbound. **Rwy 33**, climb runway heading to 1000 before turning southbound.

## TETERBORO, NJ

TETERBORO (TEB)

AMDT 7 11293 (FAA)

TAKE-OFF MINIMUMS: **Rwy 1**, 400-2¼ or std. w/min. climb of 294' per NM to 500. **Rwy 6**, 300-1¼ or std. w/min. climb of 263' per NM to 400. **Rwy 19**, 600-2¼ or std. w/min. climb of 352' per NM to 700. **Rwy 24**, 300-1¼ or std. w/min. climb of 442' per NM to 500.DEPARTURE PROCEDURE: **Rwy 1**, climbing right turn heading 040° to 900 before proceeding on course. **Rwy 6**, climbing left turn heading 040° to 900 before proceeding on course. **Rwy 19**, climb heading 195° to 900 then climbing right turn on BWZ VORTAC R-104 to 2000 before proceeding on course. **Rwy 24**, climb heading 240° to 1500 before proceeding on course.NOTE: **Rwy 1**, vent on hangar, buildings, and trees beginning 195' from DER, 548' left of centerline, up to 73' AGL/82' MSL. Poles and trees beginning 903' from DER, 136' right of centerline, up to 44' AGL/53' MSL. Building 5900' from DER, 1519' left of centerline, 160' AGL/224' MSL. Building 2.1 NM from DER, 787' right of centerline, 249' AGL/314' MSL. **Rwy 6**, sign, poles, buildings, and trees beginning 235' from DER, 10' left of centerline, up to 106' AGL/115' MSL. Building, poles, and trees beginning 335' from DER, 101' right of centerline, up to 92' AGL/101' MSL. Stack 1.2 NM from DER, 654' right of centerline, 230' AGL/240' MSL. **Rwy 19**, vent on building and trees beginning 215' from DER, 1' left of centerline, up to 77' AGL/86' MSL. Blast fence, poles, and trees beginning 185' from DER, 117' right of centerline, up to 83' AGL/92' MSL. Tower 1.9 NM from DER, 1646' right of centerline, 500' AGL/510' MSL. **Rwy 24**, sign and trees beginning 3347' from DER, 535' right of centerline, up to 125' AGL/134' MSL. Trees 5303' from DER, 1915' right of centerline, up to 100' AGL/309' MSL.

## TICONDEROGA, NY

TICONDEROGA MUNI (4B6)

ORIG 98113 (FAA)

TAKE-OFF MINIMUMS: **Rwy 20**, 800-2 or std. with a min. climb of 330' per NM to 1200.DEPARTURE PROCEDURE: **Rwy 2**, climb runway heading to 3800 before proceeding on course. **Rwy 20**, climbing left turn to 2400 via heading 165° before proceeding on course.

## TOMS RIVER, NJ

ROBERT J. MILLER AIR PARK (MJX)

ORIG 07270 (FAA)

NOTE: **Rwy 6**, trees beginning 116' from departure end of runway, 2' left of centerline, up to 52' AGL/121' MSL. Trees beginning 333' from departure end of runway, 163' right of centerline, up to 60' AGL/169' MSL. **Rwy 24**, tree 1338' from departure end of runway, 730' right of centerline, 31' AGL/120' MSL.

## TRENTON, NJ

TRENTON MERCER (TTN)

TAKE-OFF MINIMUMS: **Rwy 16**, 300-1.DEPARTURE PROCEDURE: **Rwy 6**, climb runway heading to 750 before turning east. **Rwy 24**, climb runway heading to 400 before turning.

## VINCENTOWN, NJ

RED LION (N73)

AMDT 1 09071 (FAA)

NOTE: **Rwy 5**, trees 1095' from DER, 90' left of centerline, 100' AGL/149' MSL. Trees 1816' from DER, 864' right of centerline, 100' AGL/159' MSL. Trees 2242' from DER, 41' right of centerline, 100' AGL/159' MSL. **Rwy 23**, trees 24' from DER, 373' right of centerline, 100' AGL/150' MSL. Trees 178' from DER, 185' right of centerline, 100' AGL/150' MSL. Trees 85' from DER, 139' right of centerline, 100' AGL/150' MSL.

## VINELAND, NJ

KROELINGER (29N)

AMDT 1 94062 (FAA)

TAKE-OFF MINIMUMS: **Rwys 10, 28**, 300-1.

## WATERTOWN, NY

WATERTOWN INTL (ART)

AMDT 1 11321 (FAA)

TAKE-OFF MINIMUMS: **Rwy 7**, 300-1¼ or std. w/min. climb of 231' per NM to 700, or alternatively, with standard takeoff minimums and a normal 200' per NM climb gradient, takeoff must occur no later than 2100' prior to DER. **Rwy 10**, 300-1¼ or std. w/min. climb of 306' per NM to 700.DEPARTURE PROCEDURE: **Rwy 10**, climb heading 090° to 1000 before turning right.NOTE: **Rwy 7**, road and trees beginning 540' from DER, 33' left of centerline, up to 100' AGL/559' MSL. Trees beginning 787' from DER, 97' right of centerline, up to 100' AGL/405' MSL. **Rwy 10**, trees beginning 536' from DER, 62' right of centerline, up to 100' AGL/532' MSL. Trees beginning 1827' from DER, 204' left of centerline, up to 100' AGL/382' MSL. Rising terrain beginning 5573' from DER, 1148' right of centerline, up to 569' MSL. **Rwy 28**, trees beginning 620' from DER, 2' right of centerline, up to 100' AGL/409' MSL. Trees beginning 784' from DER, 1' left of centerline, up to 100' AGL/391' MSL.

31 MAY 2012 to 28 JUN 2012

31 MAY 2012 to 28 JUN 2012

12152

# TAKE-OFF MINIMUMS AND (OBSTACLE) DEPARTURE PROCEDURES

NE-2

# TAKE-OFF MINIMUMS AND (OBSTACLE) DEPARTURE PROCEDURES

12152

## WEEDSPORT, NY

WHITFORDS (B16)  
ORIG 96284 (FAA)  
TAKE-OFF MINIMUMS: **Rwys 1, 10, 19, 28**, 300-1.

## WELLSVILLE, NY

WELLSVILLE MUNI AIRPORT,  
TARANTINE FIELD (ELZ)  
DEPARTURE PROCEDURE: **Rwys 10, 28**, climb  
runway heading to 2500 before proceeding on  
course.

## WEST MILFORD, NJ

GREENWOOD LAKE (4N1)  
AMD 2 12040 (FAA)  
TAKE-OFF MINIMUMS: **Rwy 6**, std. w/min. climb of  
260' per NM to 1700; or, 1300 - 2½ for climb in  
visual conditions. **Rwy 24**, 500 - 2½; or, 1300 - 2½  
for climb in visual conditions.  
DEPARTURE PROCEDURE: **Rwy 6**, climb heading  
061° to 1700 before proceeding on course, or for  
climb in visual conditions: cross Greenwood Lake  
Airport at or above 1900' MSL before proceeding on  
course. When executing VCOA, notify ATC prior to  
departure. **Rwy 24**, climb heading 241° to 1800  
before proceeding on course, or for climb in visual  
conditions: cross Greenwood Lake Airport at or  
above 1900' MSL before proceeding on course.  
When executing VCOA, notify ATC prior to  
departure.  
NOTE: **Rwy 6**, trees beginning 18' from DER, across  
centerline, up to 100' AGL/1284' MSL. **Rwy 24**, trees  
beginning 3' from DER, across centerline, up to 100'  
AGL/1191' MSL.

## WESTHAMPTON BEACH, NY

FRANCIS S. GABRESKI (FOK)  
AMD 2 12152 (FAA)  
TAKE-OFF MINIMUMS: **Rwy 6**, 300-1¼ or std. w/  
min. climb of 230' per NM to 400, or alternatively,  
with standard takeoff minimums and a normal 200'  
per NM climb gradient, takeoff must occur no later  
than 2000' prior to DER.  
NOTE: **Rwy 1**, terrain and trees beginning 6' from  
DER, 129' left of centerline, up to 33' AGL/107' MSL.  
Trees beginning 1007' from DER, 677' right of  
centerline, up to 29' AGL/98' MSL. **Rwy 6**, trees  
1285' from DER, 720' left of centerline, up to 36'  
AGL/105' MSL. Pole 2027' from DER, 987' right of  
centerline, 85' AGL/161' MSL. Transmission line  
tower 1.3 NM from DER, 2432' left of centerline, 71'  
AGL/301' MSL. **Rwy 15**, trees beginning 1053' from  
DER, 496' left of centerline, up to 50' AGL/79' MSL.  
Trees beginning 977' from DER, 204' right of  
centerline, up to 51' AGL/90' MSL. **Rwy 19**, poles,  
buildings, and trees beginning 270' from DER, 219'  
left of centerline, up to 57' AGL/88' MSL. Trees 6'  
from DER, 358' right of centerline, up to 17' AGL/66'  
MSL. **Rwy 24**, sign, building, and trees beginning  
37' from DER, 251' left of centerline, up to 75' AGL/  
115' MSL. Bushes and trees beginning 6' from DER,  
299' right of centerline, up to 12' AGL/61' MSL.  
**Rwy 33**, terrain beginning 53' from DER, 407' left of  
centerline, up to 67' MSL. Terrain, runway end  
identifier light, and trees beginning 52' from DER,  
97' right of centerline, up to 29' AGL/103' MSL.

## WHEELER-SACKAAF (KGTB)

FORT DRUM, NY . . . . . AMDT 5,  
09239  
**Rwy 15**, Standard with minimum climb of 250 ft/NM to 3100.  
**Rwy 21**, Standard with minimum climb of 250 ft/NM to 3100.  
DEPARTURE PROCEDURE: **Rwy 26**, Climb hdg 263° to  
1400 before turning left.  
TAKE-OFF OBSTACLES: **Rwy 3**: Trees 100' AGL/759'  
MSL, 2467' from DER, 896' left of centerline. **Rwy 8**:  
Trees 62' AGL/747' MSL, 441' from DER, 524' right of  
centerline. Trees 62' AGL/747' MSL, 1887' from DER,  
125' right of centerline. Fenceline 11' AGL/696' MSL, 314'  
from DER, 367' right of centerline. **Rwy 15**: Trees 60'  
AGL/747' MSL, 1402' from DER, 535' left of centerline.  
**Rwy 26**: Trees 42' AGL/717' MSL, 1293' from DER, 614'  
right of centerline. Trees 13' AGL/688' MSL, 186' from  
DER, 463' right of centerline. **Rwy 33**: Trees 47' AGL/710'  
MSL, 1224' from DER, 609' right of centerline.

## WHITE PLAINS, NY

WESTCHESTER COUNTY (HPN)  
AMD 6 08213 (FAA)  
TAKE-OFF MINIMUMS: **Rwy 29**, 200-1½ or std. w/min.  
climb of 230' per NM to 700, or alternatively, with standard  
takeoff minimums and normal 200' NM climb gradient,  
takeoff must occur no later than 1900' prior to departure  
end of runway.  
NOTE: **Rwy 11**, trees beginning 170' from departure end of  
runway, left and right of centerline, up to 96' AGL/526'  
MSL. Terrain 140' from departure end of runway, 248' left  
of centerline, 0' AGL/392' MSL. **Rwy 16**, windsock and  
trees beginning 309' from departure end of runway, 187'  
left of centerline, up to 101' AGL/510' MSL. Trees  
beginning 1005' from departure end of runway, 90' right of  
centerline, up to 127' AGL/436' MSL. Poles 3433' from  
departure end of runway, 604' left of centerline, up to 105'  
AGL/510' MSL. Terrain 273' from departure end of runway,  
515' left of centerline, 0' AGL/387' MSL. **Rwy 34**, windsock  
167' from departure end of runway, 282' right of centerline,  
26' AGL/456' MSL. Trees 612' from departure end of  
runway, 560' left of centerline, up to 81' AGL/491' MSL.  
Trees beginning 2011' from departure end of runway, 751'  
right of centerline, up to 104' AGL/504' MSL. Obstruction  
light on DME 605' from departure end of runway, 263'  
right of centerline, 20' AGL/454' MSL. **Rwy 29**, trees  
beginning 6' from departure end of runway, 14' right of  
centerline, up to 103' AGL/593' MSL. Pole and trees  
beginning 425' from departure end of runway, 228' left of  
centerline, up to 108' AGL/488' MSL. Tank 1.19 NM from  
departure end of runway, 751' right of centerline, 86' AGL/  
599' MSL. Pole 212' from departure end of runway, 485'  
right of centerline, 23' AGL/417' MSL.

31 MAY 2012 to 28 JUN 2012

31 MAY 2012 to 28 JUN 2012

12152

# TAKE-OFF MINIMUMS AND (OBSTACLE) DEPARTURE PROCEDURES

NE-2


**TAKE-OFF MINIMUMS AND (OBSTACLE) DEPARTURE PROCEDURES**


12152

**WILDWOOD, NJ**

CAPE MAY COUNTY (WWD)

AMDT 3 06215 (FAA)

TAKE-OFF MINIMUMS: **Rwy 10**, 300-2 or std. with a min. climb of 260' per NM to 500.

DEPARTURE PROCEDURE: **Rwy 19**, climb heading 190° to 700 before turning left.

NOTE: **Rwy 1**, multiple trees beginning 212' from departure end of runway, 187' left of centerline, up to 72' AGL/86' MSL. Multiple trees beginning 169' from departure end of runway, 314' right of centerline, up to 42' AGL/59' MSL. Road 197' from departure end of runway 240' right of centerline, 15' AGL/30' MSL. Road 265' from departure end of runway, on runway centerline, 15' AGL/29' MSL. **Rwy 10**, multiple trees beginning 42' from departure end of runway, 262' left of centerline, up to 60' AGL/77' MSL. Multiple trees beginning 1004' from departure end of runway, 441' left of centerline, up to 77' AGL/94' MSL. Tower 1.52 NM from departure end of runway, 643' left of centerline, 309' AGL/84' MSL. **Rwy 19**, multiple trees beginning 669' from departure end of runway, 397' left of centerline, up to 73' AGL/90' MSL. Multiple trees beginning 1010' from departure end of runway, 46' right of centerline, up to 62' AGL/90' MSL. Fence 80' from departure end of runway, 507' right of centerline, 18' AGL/30' MSL. **Rwy 28**, multiple trees beginning 74' from departure end of runway, 460' left of centerline, up to 70' AGL/84' MSL. Multiple trees beginning 1235' from departure end of runway, 496' right of centerline, up to 74' AGL/88' MSL.

**WILLIAMSON/SODUS, NY**

WILLIAMSON-SODUS (SDC)

AMDT 1 08213 (FAA)

TAKE-OFF MINIMUMS: **Rwy 10**, 300-2 or std. w/ min. climb of 427' per NM to 700.

NOTE: **Rwy 10**, trees beginning 26' from departure end of runway, 296' right of centerline, up to 76' AGL/625' MSL. Trees beginning 257' from departure end of runway, 310' left of centerline, up to 56' AGL/655' MSL. Vehicles on roadway, 339' from departure end of runway, 377' right of centerline, 15' AGL/451' MSL. Pole 360' from departure end of runway, 122' left of centerline, 29' AGL/448' MSL. Pole 362' from departure end of runway, 85' right of centerline, 31' AGL/450' MSL. Silo 409' from departure end of runway, 466' left of centerline, 40' AGL/459' MSL. Antenna 1.5 NM from departure end of runway, 662' left of centerline, 100' AGL/659' MSL. Antenna 1.6 NM from departure end of runway, 400' left of centerline, 106' AGL/715' MSL. **Rwy 28**, trees beginning abeam departure end of runway, 188' left of centerline, up to 110' AGL/549' MSL. Trees beginning 72' from departure end of runway, 266' right of centerline, up to 93' AGL/522' MSL. Building 204' from departure end of runway, 271' right of centerline, 12' AGL/441' MSL. Fence 312' from departure end of runway, 59' left of centerline, 6' AGL/435' MSL. Pole 338' from departure end of runway, 271' left of centerline, 32' AGL/461' MSL. Vehicles on roadway 357' from departure end of runway, 382' left of centerline, 15' AGL/460' MSL. Building 497' from departure end of runway, 339' left of centerline, 21' AGL/450' MSL.

**WOODBINE, NJ**

WOODBINE MUNI (OBI)

AMDT 2 09239 (FAA)

NOTE: **Rwy 1**, trees beginning 182' from DER, 284' left of centerline up to 100' AGL/134' MSL. Trees beginning 38' from DER, 290' right of centerline up to 100' AGL/144' MSL. Train 387' from DER, 596' left of centerline up to 23' AGL/57' MSL. **Rwy 13**, trees beginning 4' from DER, 277' left of centerline up to 100' AGL/134' MSL. Trees beginning 2395' from DER, 865' right of centerline up to 100' AGL/134' MSL. **Rwy 19**, trees beginning 4' from DER, 284' left of centerline up to 100' AGL/129' MSL. Trees beginning 178' from DER, 212' right of centerline up to 100' AGL/124' MSL. **Rwy 31**, trees beginning 261' from DER, 529' right of centerline up to 100' AGL/144' MSL. Trees beginning 107' from DER, 288' left of centerline up to 100' AGL/144' MSL. Railroad 900' from DER left to right 23' AGL/63' MSL.

**WURTSBORO, NY**

WURTSBORO-SULLIVAN COUNTY (N82)

AMDT 1 03135 (FAA)

TAKE-OFF MINIMUMS: **Rwys 5,9,14,18,27,32,36**, NA-obstacles. **Rwy 23**, std. with a min. climb of 388' per NM to 2100.

DEPARTURE PROCEDURE: **Rwy 23**, climb via heading 228° to 2100 before proceeding on course.

NOTE: **Rwy 23**, numerous trees 6594' from departure end of runway, 2150' right of centerline, 100' AGL/793' MSL to 100' AGL/957' MSL.

31 MAY 2012 to 28 JUN 2012

31 MAY 2012 to 28 JUN 2012

12152


**TAKE-OFF MINIMUMS AND (OBSTACLE) DEPARTURE PROCEDURES**


NE-2